

BENTON COUNTY VOTERS' PAMPHLET



PRIMARY ELECTION MAY 18, 2010

This is the beginning of Benton County's voters' pamphlet. The Benton County portion of this joint voters' pamphlet is clearly marked with a gray bar on the outside edge. All Information contained in the county portion of this pamphlet has been assembled and printed by the Benton County Board of Commissioners.



BOARD OF COMMISSIONERS

408 SW Monroe Ave., Suite 111

P.O. Box 3020

Corvallis, OR 97339-3020

(541) 766-6800

FAX (541) 766-6893

Dear Fellow Benton County Voter:

On Tuesday, May 18, 2010, a Primary Election will be held in Benton County. As a registered voter, you will have an opportunity to exercise your right to vote for federal, state and county positions on your ballot. Depending on where you live, you may also have a district measure on your ballot.

The Board of Commissioners directed the County Clerk to publish this **Benton County Voters' Pamphlet** to provide voters with pertinent and useful information concerning their choices in this election.

Candidates were provided an opportunity to issue a statement for inclusion in this pamphlet, while proponents and opponents of measures had the opportunity to submit arguments in favor or against a measure. To bring this information to the voters in the most efficient and cost effective way, the pamphlet is available on the Elections office website www.co.benton.or.us/admin/elections and also inserted in the Oregon Secretary of State produced Voters' Pamphlet for delivery to each Benton County household.

In addition, you will find information on registering to vote, applying for absentee ballots, marking your ballot, and obtaining a replacement ballot. We hope this information will help you become better informed about the issues in this election as you prepare to make your decisions.

Please Note: All ballots, whether mailed or delivered in-person, must be received at an official ballot drop site in Oregon no later than 8:00 P.M. on May 18, 2010. You can drop your ballot at one of the ballot drop site locations listed on the election website and in this pamphlet. The Benton County Elections office is located in the basement of the historic Benton County Courthouse located at 120 NW 4th Street, Room 13, in Corvallis.

Sincerely,


Commissioner


Commissioner


Commissioner

VOTE

TABLE OF CONTENTS AND OFFICIAL DROPSITES

TABLE OF CONTENTS	BALLOT DROPSITES
<p>Board of Commissioners Letter 2</p> <p>Index and Ballot Dropsites 3</p> <p>-----MEASURES-----</p> <p>City of Albany 4</p> <p>Philomath School District 17J 5</p> <p> Arguments 6-11</p> <p>Country Estates Road District 12</p> <p>-----CANDIDATES-----</p> <p>Benton County Commissioner, Position 1</p> <p>Linda Modrell Democrat 13</p> <p>Jerry J. Jackson, Sr. Republican 13</p> <p>-----OTHER INFORMATION-----</p> <p>Casting your Ballot and FAQ 14</p> <p>Registration, Ballot Information, and Contact Information 15</p>	<p>*All ballot dropsites open until 8 PM Election Day</p> <p>Directions to dropsites can be found on our website at www.co.benton.or.us/admin/elections</p> <p><u>CORVALLIS - BENTON COUNTY COURTHOUSE</u> 24-hour outdoor - 5th Street side of building Main entrance foyer at top of stairs Basement next to Room 13 120 NW 4th St - Corvallis Mon thru Fri 8 AM to 5 PM* (541) 766-6756</p> <p><u>CORVALLIS - LINCOLN HEALTH CENTER</u> 121 SE Viewmont Ave - Corvallis 24-hour drive through in parking lot</p> <p><u>CORVALLIS - TIMBERHILL - WELLS FARGO BANK</u> 2543 NW Kings Blvd - Timberhill Shopping Center 24-hour drive through</p> <p><u>CORVALLIS - PUBLIC LIBRARY</u> 645 NW Monroe Ave - Corvallis Mon thru Fri 10 AM to 9 PM Sat 10 AM to 6 PM Sun Noon to 6 PM</p> <p><u>CORVALLIS - OSU VALLEY LIBRARY</u> OSU Campus Mon thru Thu 7:30 AM to 1 AM Fri 7:30 AM to 10 PM Sat 10 AM to 10 PM Sun 10 AM to 1 AM</p> <p><u>CORVALLIS - LBCC BENTON CENTER</u> 757 NW Polk Ave - Corvallis Mon thru Thu 7:30 AM to 9:30 PM Fri 8 AM to 4 PM</p> <p><u>CORVALLIS - SENIOR CITIZENS CENTER</u> 2601 NW Tyler Ave - Corvallis Mon thru Fri 8 AM to 4 PM*</p> <p><u>CORVALLIS - CITY LIMITS MARKET</u> 5800 NW Highway 99W - north of Corvallis Mon thru Fri 6 AM to 10 PM Sat 8 AM to 10 PM Sun 8 AM to 9 PM</p> <p><u>ALBANY - RAY'S FOOD PLACE</u> 621 Hickory Ave - North Albany Shopping Center 24-hour outdoor - near main entrance</p> <p><u>ALSEA - JOHN BOY'S ALSEA MERCANTILE STORE</u> 186 E Main St - Alsea Mon thru Sat 6 AM to 9 PM Sun 7 AM to 8 PM</p> <p><u>MONROE - CITY HALL</u> 664 Commercial St - Monroe Mon thru Fri 8 AM to 5 PM; Closed Noon to 1 PM*</p> <p><u>PHILOMATH - PUBLIC LIBRARY</u> 1050 Applegate St - Philomath Mon, Thu, Fri, & Sat 10 AM to 5 PM Tue and Wed 10 AM to 8 PM</p>

CITY OF ALBANY

Measure 22-92

BALLOT TITLE

CAPTION: ADOPTS REVISED ALBANY CITY CHARTER

QUESTION: Shall Albany adopt a Charter updating language and procedures and removing sections that have been superseded by state law?

SUMMARY: This measure revises the Albany City Charter. The Albany City Charter serves as the City's Constitution that outlines the form, functions, responsibilities and authority of municipal government. Albany was incorporated in 1864. Its Charter has been revised several times in intervening years to remain current. In early 2007, the Mayor and City Council asked the City Attorney and City Manager's staff to review the existing charter for compliance with the Oregon Constitution, laws and court decisions. Staff incorporated recommendations from a 1993 review conducted by legal counsel for the League of Oregon Cities and subsequent review and recommendations from the Albany Finance Director and City Clerk. The resulting document retains much of the 1956 City Charter and the Council-Manager form of government.

The changes proposed in this ballot measure retains the Council-Manager form of government; acknowledges the annexation of North Albany; eliminates several sections that no longer apply, have been superseded by Oregon law, or are otherwise invalid; codifies current practices; and renders all language gender-neutral.

EXPLANATORY STATEMENT

This measure revises the Albany City Charter. In early 2007, the Mayor and City Council asked the City Attorney and City Manager's staff to review the existing Charter for compliance with the Oregon Constitution, laws and court decisions. Staff incorporated recommendations from a 1993 review conducted by legal counsel from the League of Oregon Cities and subsequent review and recommendations from the Albany Finance Director and City Clerk.

The resulting document retains much of the 1956 City Charter and the Council-Manager form of government. New language would codify a current practice, authorized by Council resolution, of adopting ordinances by reading them a first time in title only during open Council meetings, followed by a second reading at the same meeting by unanimous vote of all Councilors present. The revisions acknowledge changes such as the annexation of North Albany, and the Charter now reflects that the City of Albany is in both Linn and Benton counties. Its language has been rendered gender-neutral. References to the City Recorder have been changed to "City Clerk" to more clearly reflect the record-keeping and archiving duties of that position. Sections dealing with tort claims and the Parks & Recreation levy are removed; they have been superseded by state law. A section dealing with bids for public improvements has been removed since the City has adopted Oregon purchasing rules. Sections relating to bonds for the construction of City Hall and sewer facilities no longer apply. The proposed charter eliminates a 1994 citizen-initiated amendment prohibiting minority status for homosexuals. The section was declared invalid and unenforceable in 1995.

The prospective measure has been found to meet the requirement found in Section 1(2) (d), Article IV of the Oregon Constitution, the single subject requirement. Pursuant to ORS 250.296, an elector may file a petition for review of the ballot title and/or single subject requirement with the Linn County Circuit Court not later than the 7th Business day after the title is filed with the City Elections officer. The petition must state reasons the title is insufficient, not concise, or unfair. The elector filing the petition must be sure written comments address specific legal standards required by law.

NO ARGUMENTS FOR OR AGAINST THIS MEASURE WERE FILED

PHILOMATH SCHOOL DISTRICT 17J

Measure 02-71

BALLOT TITLE

CAPTION: PHILOMATH SCHOOL DISTRICT BOND TO RENOVATE AGING FACILITIES; CODE COMPLIANCE

QUESTION: Shall Philomath School District replace roofing, siding, facility infrastructure, and renovate the high school, by issuing \$29,500,000 General Obligation bonds? If the bonds are approved, they will be payable from taxes on property or property ownership that are not subject to the limits of sections 11 and 11b, Article XI of the Oregon Constitution.

SUMMARY: If approved, this measure would finance capital improvements, renovations, construction and site improvements at School District facilities. Specifically this measure would fund:

Code Compliance:

- Remove flammable FirTex tiles from school buildings
- Install fire suppression system in High School
- Perform seismic upgrades to Middle School
- Upgrade fire suppression system and interior at Philomath Elementary

Infrastructure:

- Blodgett Elementary: replace roof, siding, windows; electrical and plumbing upgrades
- Philomath Elementary: replace roof, siding, ceiling, HVAC units; replace floor covering in original classroom wing
- Philomath Middle School: replace roof, siding, windows; electric, plumbing, and HVAC upgrades

High School:

- Construct and equip new classroom wing to replace two original classroom wings
- Renovate other classrooms, bathrooms and locker rooms to current standards
- Renovate Gym I to multi-purpose student commons and auditorium
- Construct two gymnasiums to replace current gymnasiums
- Construct and equip student counseling area, teaching staff room

The bonds would also fund costs of issuance, capitalized interest (if any), and mature in 30 years or less from the issuance date.

EXPLANATORY STATEMENT

The Philomath School District has evaluated its facilities over a three year period, first by a citizen's advisory committee, then a third party architect assessment. Results of this study identified a number of structural and renovation projects. The original wing of Philomath Elementary School was built in the 1930's; Blodgett School was built in the 1940's and

1950's. Bond funds would replace leaking roof, siding and windows on both schools. Replacement of FirTex tiles (flammable, per Underwriters' Laboratories), water-damaged floor, ceiling, and obsolete rooftop HVAC (Heating, Ventilation and Air Conditioning) units would be scheduled in Philomath Elementary School. According to the architect assessment, the school building is structurally sound. Middle School repairs would include roof, siding, and galvanized plumbing replacement; electrical, seismic, HVAC and fire alarm system upgrades.

The current High School was built in 1956 and 1958. Many additions and remodels since then have resulted in a large, complex structure with a wide variety of construction materials and non-integrated systems. Gym II has undergone short-term bracing to its main structural support beams, due to extensive rot and water damage. Galvanized water supply pipes leak or have burst, including underground supply pipes. Most of the High School hallways and classroom wings have FirTex tiles. The High School has no fire suppression system. High School renovation projects would include:

- Construct and equip a new two-story classroom wing, to replace the original classroom wings
- Renovate other classrooms, bathrooms and locker rooms to current standards
- Renovate and equip Gym I to a multi-purpose student commons, cafeteria and performance auditorium area. The auditorium would be for district and community use
- Construct two new gymnasiums to replace current Gym I, and structurally damaged Gym II
- Construct and equip student counseling area, teaching staff room and office
- Replace or upgrade heating, plumbing, electrical and HVAC to meet current code and energy efficiency standards
- Install fire suppression system
- Remove FirTex tiles
- Use at least 1.5% of total funds for renewable energy solutions (mandated by Oregon House Bill 2620)

The school board has approved the formation of a Bond Oversight Committee, to ensure funds from bonds would be used as approved by voters. The bond funds can only be used for bond projects, or to reduce the tax levy rate. If actual construction costs are below estimates, additional renovations may be authorized by the Bond Oversight Committee and the School Board. Total bond funds would not exceed \$29,500,000 and not exceed 30 years in term.

The District has received an allocation of low interest capital construction bonds, authorized under the Federal Stimulus program. The District intends to use these low interest bonds and other financing tools, to maximize construction dollars and reduce interest expense.

Based on analysis by Seattle Northwest Securities, as prior general obligation bonds will be retired, new construction bonds may be issued without increasing bond levy rates.

PHILOMATH SCHOOL DISTRICT 17J

Measure 02-71

ARGUMENT FOR

Please join us, the members of the Philomath School Board, in voting

Yes on Measure 02-71

The money raised from selling these bonds will be used to repair critical issues of safety, energy efficiency, and usability at Philomath Elementary School, Blodgett Elementary School, and Philomath Middle School.

At Philomath High School, we will build a new classroom wing, renovate the original competitive gymnasium (Gym 1) into a student commons area and performing arts auditorium, construct a new competitive gymnasium, improve or replace the existing practice gymnasium (Gym 2), and replace the music room, office, and counseling centers.

We currently have access to \$15-20M in low-or-no interest bonds from the federal stimulus programs. This allows us to spend substantially more on facilities improvements and less on interest costs.

Also, with existing school bonds being paid off next year and in 2018, we can issue these new bonds, raise up to \$29.5M in construction money for our kids and schools, and still keep the current school construction tax levy rate flat. In other words, all this and no incremental taxes!

Finally, with construction costs at historic lows, we should be able to get even more for our tax dollar.

Now is the time!

Help us preserve Philomath's long-standing commitment to education, to our children, and to our community.

PLEASE JOIN US AND VOTE YES ON MEASURE 02-71.

Rose Cook, Philomath School Board Chair

Rick Wells, Philomath School Board Vice Chair

Tom Klipfel, Philomath School Board Member

Jim Kildea, Philomath School Board Member

Mark Gunter, Philomath School Board Member

(This information furnished by Tom Klipfel)

The printing of this argument does not constitute an endorsement by Benton County, nor does the county warrant the accuracy or truth of any statement made in the argument.

ARGUMENT FOR

Philomath community leaders urge you to support our children and help renovate and rebuild our schools.

Please join us in voting YES on Measure 02-71

(Endorsements are from the individual person, not their respective organization.)

Larry Sleeman,
Retired Principal,
Philomath Middle School

Denny Bennett, Board Chair,
Philomath Youth Activities
Club

Ken Schaudt, Mayor,
City of Philomath

Ron Thiesen, President,
Philomath Rotary

Rose Cook, Chair,
Philomath School Board

Traci Choi, Committee Chair,
Boy Scout Troop 161

Allison Rust, President,
CPS/PES Parent Club

Jack Flachsbart, Pastor,
Peace Lutheran Church

Brian Thorsness, President,
Philomath Booster Club

Tom Klipfel, Scoutmaster,
Boy Scout Troop 161

Ken Elwer, Chief of Police,
City of Philomath

Linda Modrell, County
Commissioner, Benton County

Tom Phelps, Fire Chief,
Philomath Fire & Rescue

Jim Hall, Pastor,
Living Faith Church

Randy Kugler,
City Manager,
City of Philomath

Ed Van Vlack, Executive
Director, Philomath
Youth Activities Club

Dale Collins,
Former Mayor,
City of Philomath

Jeff Light, Chair,
City of Philomath,
Budget Committee

Marcia Gilson, President,
Philomath Chamber of
Commerce

Rod Harvey, Retired Principal,
Philomath Elementary School

Better schools, better kids, better community.

YES ON MEASURE 02-71

(This information furnished by Tom Klipfel)

The printing of this argument does not constitute an endorsement by Benton County, nor does the county warrant the accuracy or truth of any statement made in the argument.

PHILOMATH SCHOOL DISTRICT 17J

Measure 02-71

ARGUMENT FOR

YES ON MEASURE 02-71

We, the performing arts educators of the Philomath School District, encourage you to vote YES on the upcoming Philomath School Construction Bond.

We have an abundance of student talent in our school district. However, our facilities are grossly inadequate to provide the students the opportunity to perform in drama productions and vocal and instrumental concerts worthy of their talents and hard work. No school has a large enough stage or adequate sound system to support quality performances, and audience seating is reduced to folding chairs or wooden bleachers.

The building plans with the proposed bond include retrofitting the current high school gymnasium (Gym 1) into a commons area and a full-service auditorium with improved seating, sound, lighting, stage, and support facilities.

We have wonderful music and drama programs throughout the Philomath School District. Please help us provide a facility that our students deserve to showcase their musical and dramatic talents.

Dr. Dan Johnson, Philomath High School
Director of Performing Arts

Mrs. Diane Crocker, Philomath Middle School
Band Director
Drama Director

Ms. Amy Kao,
Philomath Middle School, Clemens Primary School,
Blodgett Elementary School
Music Teacher
Choir Director

Mrs. Colleen Schulze, Philomath Elementary School
Music Teacher
Falcon Singers Choir Director

Support our music and dramatic arts programs, support our schools, support our kids.

PLEASE VOTE YES ON MEASURE 02-71

(This information furnished by Tom Klipfel)

The printing of this argument does not constitute an endorsement by Benton County, nor does the county warrant the accuracy or truth of any statement made in the argument.

ARGUMENT FOR

The Philomath Booster Club enthusiastically supports Measure 02-71.

Philomath schools are a vital community asset. Voting YES on Measure 02-71 will benefit our children and our community!

The Philomath School District has spent a lot of time gathering information on facility improvements needed throughout the district to help ensure continued student success.

Philomath High School was built 54 years ago for 300 students. There are currently more than 550 students attending PHS. This bond sale will allow for a new classroom wing, competition gym, and much needed improvements in many other areas at PHS. Bond funds would also be used to repair critical issues of fire and earthquake safety, energy efficiency, up to date building security, and improved usability at other schools in the district.

The timing is perfect for the new bonds. Existing school bonds will soon expire and the district has access to \$15+ million in low-or-no interest bonds from stimulus monies. That means more funds are available for improvements (savings millions of dollars in interest) with no increase in your taxes. It is likely that additional funds would not be available in the future. So the time is right!

Please join us in voting YES on Measure 02-71 for our children, our community, and our future!

Go Warriors!

Philomath Booster Club Board:
Brian Thorsness, President
Erin Haynes, Vice President
Kristi Marshall, Secretary
Jackie Thorsness, Treasurer
Steve Bennett, PHS Athletic Director

(This information furnished by Brian Thorsness, President, Philomath Booster Club)

The printing of this argument does not constitute an endorsement by Benton County, nor does the county warrant the accuracy or truth of any statement made in the argument.

PHILOMATH SCHOOL DISTRICT 17J

Measure 02-71

ARGUMENT FOR

For our Future, Vote YES on Bond Measure 02-71

As students attending Philomath High School we are proud to be Warriors, whether we are achieving in the classroom, athletes on the field or court, cheering in the stands, or performing on stage.

In order to keep up with our competing schools academically and athletically and to be prepared for life ahead, we need modernized facilities that are capable of providing us with the tools needed to succeed.

The Philomath School District is a huge part of all of our lives. Philomath schools are helping develop our town's future leaders and citizens. Our community (families, friends, and supportive citizens) is centered around attending the school plays and concerts, sporting events, academic assemblies, and annual events put on by involved school organizations like the National Honor Society, Future Business Leaders of America, student government, our sports teams, etc.

An investment in our school system will help us to continue our rich tradition of academic and athletic excellence in a more efficient and productive environment. It is worthwhile to invest in our schools, especially when it can be done without increasing taxes.

While we will personally graduate before construction would be finished, we want this for all the students that will come after us and for our future families that we hope to raise here. These improvements will have a positive impact on everyone.

Philomath students and our future citizens and leaders are a great investment! Vote YES on Measure 02-71.

Kayla Thorsness & Sarah Gibbons, Co-Presidents-elect,
PHS Future Business Leaders of America

(This information furnished by Kayla Thorsness, Co-President-elect, PHS Future Business Leaders of America)

The printing of this argument does not constitute an endorsement by Benton County, nor does the county warrant the accuracy or truth of any statement made in the argument.

ARGUMENT FOR

YES on Measure 02-71

The Philomath School District is an incredibly important element of our community, and of our surrounding area. Philomath is known as the City of Volunteers; **our students** provide a tremendous amount of time and effort in making our local community a better place to live. Through education, our students have learned the value of giving back.

We recognize the sense of pride students have generated within our community. Whether it is through their own senior project or assisting the efforts of others, **our students** continue to positively impact people's lives. Over the years, student projects have been creative, diverse, and meaningful --- to the benefit of our citizens.

This is an important vote in your life, and in the lives of many others. It is your opportunity to help build a stronger community, and to advance the education of our students. We encourage you to vote **YES on Measure 02-71**, to make a contribution back to our schools, in recognition of their important local efforts.

We applaud the efforts of the Philomath School Board and Superintendent, who have worked diligently to study the issues affecting their facilities. The Board understands the necessity; they have reviewed possible answers, and have now narrowed their focus to a plan that will provide a thoughtful and cost-effective solution.

It's important to understand, this solution **does not increase** your Philomath School District property tax rate. Money collected to pay the debt of this measure will come from proceeds after the retirement of past bond debts, ending in 2011 and 2018. For this reason, you will see no increase in the tax rate for Philomath School District #17.

Please join us, members of the Philomath City Council, in support of significant improvements to our local school facilities.

Ken Schaudt, Mayor
Jerry Jackson Sr., Council President
Angie Baca, Councilor
Matt Bierek, Councilor
Scott Klain, Councilor
Charla Koeppe, Councilor
Rocky Sloan, Councilor

(This information furnished by Philomath City Council)

The printing of this argument does not constitute an endorsement by Benton County, nor does the county warrant the accuracy or truth of any statement made in the argument.

PHILOMATH SCHOOL DISTRICT 17J

Measure 02-71

ARGUMENT FOR

As parents of students in the Philomath School District we appreciate and support the efforts made in behalf of educating our youth. As part of this support we acknowledge the need for improvement in the structure of the facilities. We will be voting "Yes for Philomath Schools" and ask for your "yes" vote as well.

- Bill Callender
- Brian E. Skaar
- Christine N. Beeton
- David L. Erickson
- David M. Stucki
- Daniel Beeton
- Greg Curtis
- Gregg Thompson
- Ines Erickson
- Janet Munsee
- Karli Grimmer
- Kenneth R. Nelson
- Kevin Currans
- Kristi McMorran
- Laura M. Kildea
- Lynne L. Hindman
- Mark Grimmer
- Megan M. Nelson
- Nancy Currans
- Richard Gibbs

(This information furnished by a group of parents of Philomath Schools' students)

The printing of this argument does not constitute an endorsement by Benton County, nor does the county warrant the accuracy or truth of any statement made in the argument.

ARGUMENT FOR

We at **PHILOMATH FAMILY MEDICINE** strongly urge you to vote in favor of Ballot Measure 02-71, which will provide funds to maintain and improve the facilities at our local schools. Our children need us to support their educational experiences with buildings that are not only safe, but that are conducive to learning.

The Philomath High School desperately needs these improvements! There are many problems that need rectifying in this more than 50 year old building. There is no fire suppression system. Underground supply pipes have broken and are leaking. The electrical, heating, and plumbing systems do not meet current efficiency standards. With the passage of this bond levy, the almost 35 year old Philomath Middle School will get needed roofing, siding, plumbing, electrical, and fire alarm improvements. And the even older Blodgett and Philomath Elementary Schools will have important improvements in repairs to flooring, ceilings and rooftops, as well.

At **Philomath Family Medicine** our mission is to improve the health of our patients and of our community. Philomath can be proud of many of her public health accomplishments, indeed, because of them, in part, Benton County has been determined to be the most healthy county in Oregon by a recent Robert Woods-Johnson survey. At the core of good public health is good public education! We have always strongly supported the programs of our area's public schools, and urge you to join us in passing this levy.

The Philomath School District 17J Board of Directors has constructed this levy in such a way that these very necessary school bonds will be issued without increasing our bond levy rates. And so, without increasing our taxes, we can improve our school buildings.

Your vote for Ballot Measure 02-71 is important. Please join us in your continued support of our children and our schools.

(This information furnished by David R. Grube, MD)

The printing of this argument does not constitute an endorsement by Benton County, nor does the county warrant the accuracy or truth of any statement made in the argument.

PHILOMATH SCHOOL DISTRICT 17J

Measure 02-71

ARGUMENT FOR

The school board and advisory committee have done a thorough job of evaluating and defining the problems with the buildings in the school district. I believe they have formulated a solid plan to address and correct these problems.

This is an advantageous time financially to take on these projects due to the Federal Stimulus Program. Delays could prove to be costly and repairs more extensive.

It is good stewardship for the community to maintain their capital investments. I strongly recommend and endorse the passing of this measure.

(This Information furnished by Charles F. Baker)

The printing of this argument does not constitute an endorsement by Benton County, nor does the county warrant the accuracy or truth of any statement made in the argument.

ARGUMENT FOR

Please Join Philomath Chapter 64 of the Oregon School Employees Association in voting

Yes on Measure 02-71

A healthy school has an environment that is conducive to learning and working. However, many schools are not healthy because of poor indoor quality, insufficient custodial and maintenance staff, or slow responses to health and safety concerns. Building repairs and replacements are not just aesthetic changes; they are changes necessary to the health and well-being of the students and staff that spend countless hours in these buildings. It is with pride that Philomath Chapter 64, of the Oregon School Employees Association, joins this endeavor to bring Philomath Schools up to these standards.

OSEA, a founding member of the American Association of Classified School Employees (AACSE), joins with our other affiliates in promoting Healthy High Performance Schools. AACSE, the national voice for classified school employees, continues to bring to the attention of our national representatives the unhealthy environment that many of our nation's children and school staff encounter every school day. It is because of our belief that this measure would improve the positive learning climate of Philomath schools that we are writing in support of Measure 02-71.

Help us support safe "Healthy High Performing Schools" in Philomath!

Lou Ann Mergl, President, Philomath Chapter 64
Representing the Classified Staff of
Philomath Public Schools

(This Information furnished by Oregon School Employees Association, Chapter 64)

The printing of this argument does not constitute an endorsement by Benton County, nor does the county warrant the accuracy or truth of any statement made in the argument.

PHILOMATH SCHOOL DISTRICT 17J

Measure 02-71

ARGUMENT FOR

We, the Philomath Education Association, are writing to affirm our full support of MEASURE 02-71.

This election is the culmination of a comprehensive process which has included community members, district employees, and board members to evaluate the district facilities long term needs. One of our primary goals is to ready our students to become meaningful contributors to society. To accomplish this we must provide an appropriate learning environment. The current environment is not appropriate; it is distracting and inadequate to assist in preparing students for the future.

A yes vote on Measure 02-71 will greatly advance our ability to provide a well rounded education including classrooms that will be high quality in construction, technology, layout, and energy efficiency. Also, as part of the vision for the complete education of the students, the plans include significant improvements for arts and athletics.

Philomath teachers have always been impressed by the amazing support of this community and the parents of our students and have worked hard to help students reach their full potential. Due to these efforts, Philomath students excel to statewide acclaim on a regular basis. And they do so despite leaking roofs, crowded conditions, wildly varying temperatures, and questionable plumbing.

The improvements and replacements to our facilities with the passage of this bond measure would allow the buildings to work for us, not against us. With the retiring of previous bond obligations, amazing opportunities for low to no interest monies (resulting in little or no change to current taxes), and aggressive bidding in construction, this is the best time to make a once in a lifetime difference for the children of Philomath.

Please join us in voting yes on Measure 02-71.

Jennifer Buchanan, Co-President of Philomath Education Association
Jolene Latz, Co-President of Philomath Education Association

*(This Information furnished by
Philomath Education Association)*

The printing of this argument does not constitute an endorsement by Benton County, nor does the county warrant the accuracy or truth of any statement made in the argument.

**NO ARGUMENTS AGAINST
THIS MEASURE WERE FILED**

COUNTRY ESTATES ROAD DISTRICT

Measure 02-70

BALLOT TITLE

CAPTION: FOUR-YEAR LOCAL OPTION TAX LEVY FOR OPERATIONS

QUESTION: Shall the Country Estates Road District impose an additional \$0.3900/\$1,000 tax for maintenance operations for four years, beginning in 2010? This measure may cause property taxes to increase by more than 3%.

SUMMARY: Last year the District voted to levy a five-year local option tax, in the amount of \$0.0494/\$1,000, to raise funds for major repairs to our roads. Unfortunately, there was an error in the request; it should have read \$0.4940/\$1,000. This measure will correct the oversight. It is for four years to synchronize with the original request.

The Road District portion of property tax averaged about \$130/household this year. This measure will add about \$90/household/year, and raise an estimated \$10,000/year for the planned repairs.

EXPLANATORY STATEMENT

The Country Estates Road District faces significant road repairs in the immediate future, over and above normal maintenance. Revenues are insufficient to meet this need. Our base tax rate allows for sealing roads on a rotational basis, and patching small potholes as needed. Major repairs cannot be accomplished within our current budget.

Last year, the neighborhood voted on and passed a five-year local option tax levy, at the rate of \$0.0494/\$1,000 of assessed value. When the additional income was tallied, however, instead of the approximately \$11,000 expected, only \$1,100 was found: the decimal point had been misread. This request is designed to remedy that situation. The rate put forward, \$0.3900/\$1,000 of assessed value, will add to that approved last year to equal the rate originally intended. This additional local option levy is given a four-year term to dovetail with the previous levy, and end at the same time.

NO ARGUMENTS FOR OR AGAINST
THIS MEASURE WERE FILED

BENTON COUNTY

BENTON COUNTY COMMISSIONER, POSITION ONE



**LINDA
MODRELL**
DEMOCRAT

Occupation: Benton County Commissioner

Occupational Background: Policy Developer, Oregon Health Plan; Manager, Business Services & Computer System, OSU Agricultural Sciences & Extension; Oregon Community Partnership Team; small business owner.

Educational Background: Oregon State University: MBA, BS; Linn-Benton Community College: AA.

Prior Governmental Experience: Chair, Benton County Commission; Chair, Area Commission on Transportation; Local Government Advisory Committee, Oregon Department of Human Services; Governor's Task Force on Greenhouse Gas Emissions.

Re-elect Linda MODRELL

Benton County rises to the top:

- ▶ Community Health: Number 1 in Oregon
- ▶ Good for Kids: Twice one of the Top 10 best communities in the nation
- ▶ Safe: Declining crime rate

This recognition is the result of:

- **Talented and dedicated county department directors and employees**
- **Focused leadership with a steady hand**

Transportation, water and the economy are essential to the future livability of the Willamette Valley. These issues can be successfully addressed only through **regional collaboration**. My work on Oregon's freight plan, the Upper Willamette Sub-basin Water Study Group, and the Business Enterprise Center Board are examples of my work.

Linda MODRELL: Makes a Difference

My experienced three-term leadership is that of a consistent **record of investment** in our community. Staff, leadership and volunteers have worked together to enhance the livability of our community. Together we have made investments that make a difference now and into the future:

- Affordable health clinics • Improved Parks • Forest Education Center • Drug Courts • Rural wildfire protection program • Fairgrounds improvements •

Fiscal accountability and continuous improvement strategies to improve **effectiveness** and **efficiency** of county government services are a part of the commitment and investments of county leadership.

Linda MODRELL: Committed to Community

LBCC Distinguished Alumna; Kiwanis; former president, Corvallis Arts Center; former board member, Philomath Chamber of Commerce; Business Enterprise Center Board; NAACP; former treasurer OSU Federal Credit Union; OSU Extension Citizens Advisory Network; Cascade Pacific Resource Conservation and Development (RC&D) Board.

(This information furnished by Modrell for Commissioner)

The above information has not been verified for accuracy by the county.



**JERRY J.
JACKSON,
SR.**
REPUBLICAN

Occupation: Oregon Licensed Investigator for Willamette Valley Processors; Code Enforcement Officer, contract with Polk County

Occupational Background: Polk County: Community Development Manager, Community Service/Work Release Coordinator. Veteran, US Army, Former Member of The Old Guard

Educational Background: Associates degree, Linn-Benton Community College Certificate, Trend College, Travel & Tourism Management

The Ford Family Foundation, Ford Institute Leadership Program, Association of State Floodplain Managers, Inc, ASFPM Certified Floodplain Manager

Prior Governmental Experience: Philomath City Councilor (2 terms); Currently Philomath City Council President; Currently on Budget, Finance/Administration Board and Ordinance Committees. Former appointments on Philomath's Budget Committee and Police Facilities Committee as a citizen

Years of community service have prepared Jerry Jackson to be your Benton County Commissioner. His door will always be open and his ears attuned to the concerns of Benton County citizens.

In tight financial times, Jerry knows it is imperative to:

RESTORE FISCAL RESPONSIBILITY TO BENTON COUNTY

- Bring spending under control
- Make transparency and accountability the first rules of the Commission
- Carefully weigh decisions as the Commission spends your tax dollars
- Follow taxpayers' lead by tightening government's belt
- Eliminate waste
- Make Benton County's budgeting process more accountable to the people
- Create and restore funding sources

GIVE PUBLIC SAFETY TOP PRIORITY

- Guarantee all of Benton County adequate law enforcement protection

IMPROVE BENTON COUNTY'S ROADS

- Repair and improve roads to give businesses and residents a vital transportation system
- Maintain existing roads now to save \$Millions in the future

My Pledge: "I will dedicate my efforts to implement efficient cooperation between Benton County's government and its cities and rural areas."

(This information furnished by Jerry J. Jackson, Sr. Committee to Elect Jackson for Commissioner)

The above information has not been verified for accuracy by the county.

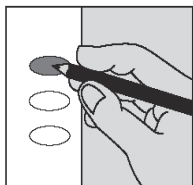
CASTING YOUR BALLOT AND FREQUENTLY ASKED QUESTIONS

HOW TO CAST YOUR BALLOT

FREQUENTLY ASKED QUESTIONS

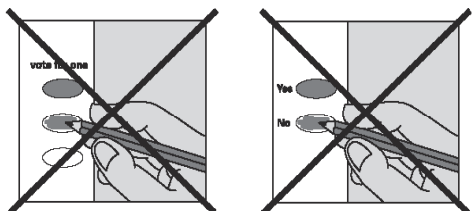
check your ballot!

Use a pen or pencil to fill in the ovals next to your choices.



If you vote for more candidates than allowed, or if you vote **both** Yes **and** No on a measure, it is called an overvote.

Your vote **will not count** for that candidate or measure.



You do not have to vote on all contests. Those you do vote on will still count.

Contact Benton County Elections to request a replacement ballot if:

- you make a mistake
- your ballot is damaged or spoiled
- you lose your ballot

Benton County Elections

Phone: (541) 766-6756
 Fax: (541) 766-6757
 TTY: (541) 766-6080
 Email: bcelections@co.benton.or.us

1 866 ORE VOTE/673 8683
Se Habla Español
www.oregonvotes.org

rev 9/04

Q. What do I do when a ballot for someone else is delivered to my home?

A. It is important that you **DO NOT THROW THE BALLOT AWAY**. Write on the envelope that the person is no longer at that address and **PUT IT BACK INTO THE MAIL**. Postage is not needed. Once our office has received the undeliverable ballot you will stop receiving them.

Q. I forgot to put my ballot in the secrecy envelope. Will you count my ballot?

A. Yes. We recommend that voters use the secrecy envelope. You can open the ballot return envelope, place your ballot in the secrecy envelope and reseal it. Write "Opened By Voter" along the portion that you opened and sign your full name there as well. That way we will know that the voter was the one who opened the ballot and can count it. However, if your ballot comes back without a secrecy envelope, it will still be counted.

Q. How do you know I am the one who voted my ballot?

A. The signature on EACH ballot return envelope is verified. Elections staff compares the signature on your ballot return envelope with the signature on your Voter Registration Card. If the signatures do not match we will contact you to help us resolve the issue. **Remember:** Even a person with a Power of Attorney cannot sign your ballot. Only you can.

Q. When do election results become available and how can I find out what they are?

A. Election results are available on the Benton County Elections website at: www.co.benton.or.us/admin/elections after 8 PM and as results become available.

Benton County ballots returned to other counties are forwarded to Benton County for tally after Election Day.

The election cannot be certified until after all voters whose signatures were challenged have had an opportunity to resolve the challenge.

VOTER REGISTRATION, BALLOT INFORMATION AND CONTACTS

VOTING AND BALLOT INFORMATION

Who is qualified to vote: In order to receive a ballot voters must be registered to vote in their county of residence no later than 21 days prior to the election. However, if a registered voter moves within the State of Oregon, that voter can update his/her voter registration information and receive a ballot up until **8:00 PM on Election Day, which is May 18, 2010.** Voter Registration Forms are available at our website www.co.benton.or.us/admin/elections or at any elections office.

Absentee Ballots: It is against the law to have anyone forward a ballot to you. Even the United States Postal Service will not forward a ballot. If you will be out of the area during the election period and would like to receive a ballot, contact our office or go to our website at www.co.benton.or.us/admin/elections for a form to request that an "Absentee Ballot" be sent directly to you.

If you lose your ballot or make a mistake while voting it: If your ballot is lost, destroyed, damaged, or you made a mistake in marking your ballot, you may contact the Benton County Elections Office to request a replacement ballot. The replacement ballot will be mailed to you, as long as your request is received no later than the 5th day before Election Day. After the 5th day before the election, you may pick up a ballot by coming to the Benton County Elections Office. If you have already mailed your original ballot before you realize you made a mistake, your ballot has been cast, and you are not eligible for a replacement ballot.

In order for your ballot to be counted it must be returned to any elections office or official ballot dropsite in the State of Oregon, **no later than 8:00 PM Election Day, May 18, 2010.**

Postmarks DO NOT count!

Ballots must be returned enclosed in the official ballot return envelope and **signed by the voter** in order to be counted. Even people with Power of Attorney do not have authority to sign another person's ballot.

Use a **PEN OR PENCIL** to vote your ballot.

If you have other questions about voter registration, your ballot, or voting in Benton County you are encouraged to call 541 766-6756.

CONTACT INFORMATION

Benton County Elections Website

The website is an excellent source of information concerning voter registration, absentee voting, frequently asked questions, and links to other local, state, and federal election officials. You will also find election specific information such as election filings, results, voter turnout and this voters' pamphlet on our website www.co.benton.or.us/admin/elections.

Voters with Disabilities

If you need help voting because of a disability, contact the Benton County Elections Office. Deputized elections staff is available to assist you in casting a ballot; or ask about alternate voting formats.

Benton County Elections Office

Phone: 541 766-6756
 TTY: 541 766-6080
 Fax: 541 766-6757
 Web: www.co.benton.or.us/admin/elections
 Email: bcelections@co.benton.or.us

State of Oregon

Phone: 1 866 673-8683
 Website: www.oregonvotes.org
 Se Habla Español

Información en Español

Para mas información sobre las elecciones en el condado de Benton

llame al: 541 766-6756
 TTY: 541 766-6080
 limitaciones auditivas
 o al numero gratis: 1 866 673-8683

Condado: www.co.benton.or.us/admin/elections
 Estado: www.oregonvotes.org

Se Habla Español

**Benton County
VOTERS' PAMPHLET
Primary Election
MAY 18, 2010**

Elections Office Open 7:00 AM to 8:00 PM Election Day

PUBLISHED BY THE
BENTON COUNTY BOARD OF COMMISSIONERS



Election Questions?

Benton County Elections Office

Phone: 541.766.6756

TTY: 541.766.6080

Fax: 541.766.6757

Website: www.co.benton.or.us/admin/elections

Email: bcelections@co.benton.or.us