

# BENTON COUNTY VOTERS' PAMPHLET



**SPECIAL ELECTION  
MAY 17, 2011**

The information contained in this pamphlet  
is taken from candidate and district filings  
for publication by the Benton County Clerk.



**BOARD OF COMMISSIONERS**

408 SW Monroe Ave., Suite 111

P.O. Box 3020

Corvallis, OR 97339-3020

(541) 766-6800

FAX (541) 766-6893

Dear Fellow Benton County Voter:

On May 17, a Special District Election will be held throughout Benton County. As a registered voter, you will have an opportunity to exercise your right to vote on local district board positions. Those who live in Corvallis will be voting on a new Local Option Tax measure that will generate funds to support the operation of the Corvallis-Benton County Public Library, Osborn Aquatic Center and Chintimini Senior Center, as well as allocations to social service programs.

The Board of Commissioners has directed the County Clerk to publish this **Benton County Voters' Pamphlet** to provide voters with helpful information about their choices concerning these elections. In an effort to bring this information to the voters in the most comprehensive and efficient way, the pamphlet will be available on the County Clerk's website at [www.co.benton.or.us/admin/elections](http://www.co.benton.or.us/admin/elections); in the Elections Office; and as an insert with each ballot.

Please remember that all ballots, whether mailed, dropped in a ballot box, or delivered in-person **must be received at an official ballot drop site in Oregon no later than 8:00 p.m. on May 17, Election Day**. You can drop your ballot at one of the ballot receptacle locations listed on our website, and in this pamphlet. The Elections Office is located in the basement of the Benton County Courthouse, 120 NW 4th Street, Corvallis, Oregon.

You will also find information on registering to vote, applying for absentee ballots, marking your ballot, and obtaining a replacement ballot in this pamphlet. We hope this information will help you become better informed about the issues in this election as you prepare to make your decisions.

Sincerely,

  
Linda Modrell  
Commissioner

  
Jay Dixon  
Commissioner

  
Annabelle Jaramillo  
Commissioner

**VOTE**

# TABLE OF CONTENTS AND OFFICIAL BALLOT DROPSITES

## TABLE OF CONTENTS

Letter from the Board of Commissioners	2
Official Benton County Ballot Dropsites	3

## SPECIAL DISTRICT CANDIDATES

LBCC Zone 6-7 (B)	4
Corvallis School District 509J	5-7
Monroe School District 1J	8
Philomath School District 17J	9
Hoskins-Kings Valley RFPD	10
Philomath Fire & Rescue	11

## CITY OF CORVALLIS MEASURE

02-74 Local Option Tax	12
Arguments For	13-17
Ballot & Voter Registration Information	18
Contact Information	18
Casting Your Ballot	19
Frequently Asked Questions	19

## BENTON COUNTY BALLOT DROPSITES

**\*All ballot dropsites open until 8 PM Election Day**

Directions to dropsites can be found on our website at [www.co.benton.or.us/admin/elections](http://www.co.benton.or.us/admin/elections)

### **CORVALLIS - BENTON COUNTY COURTHOUSE**

**Main entrance** foyer at top of stairs

**Basement** next to Room 13

120 NW 4<sup>th</sup> St - Corvallis

Mon thru Fri 8 AM to 5 PM\*

(541) 766-6756

**24-hour outdoor - Handicap entrance on 5<sup>th</sup> Street side**  
**24-hour drive up - Across the street at 180 NW 5<sup>th</sup> Street**

### **CORVALLIS - LINCOLN HEALTH CENTER**

121 SE Viewmont Ave - Corvallis

**24-hour drive through in parking lot**

### **CORVALLIS - TIMBERHILL - WELLS FARGO BANK**

2543 NW Kings Blvd - Timberhill Shopping Center

**24-hour drive through**

### **CORVALLIS - PUBLIC LIBRARY**

645 NW Monroe Ave - Corvallis

Mon thru Thu 10 AM to 8 PM

Fri & Sat 10 AM to 6 PM

### **CORVALLIS - OSU VALLEY LIBRARY**

OSU Campus

Mon thru Thu 7:30 AM to Midnight

Fri 7:30 AM to 10 PM

Sat 10 AM to 10 PM

Sun 10 AM to Midnight

### **CORVALLIS - LBCC BENTON CENTER**

757 NW Polk Ave - Corvallis

Mon thru Thu 8 AM to 9 PM

Fri 8 AM to 4 PM

### **CORVALLIS - CHINTIMINI SENIOR CITIZEN CENTER**

2601 NW Tyler Ave - Corvallis

Mon thru Fri 8 AM to 4 PM\*

### **CORVALLIS - CITY LIMITS MARKET**

5800 NW Highway 99W - north of Corvallis

Mon thru Fri 6:30 AM to 8 PM

Sat & Sun 8 AM to 8 PM

### **ALBANY - RAY'S FOOD PLACE**

621 Hickory Ave - North Albany Shopping Center

**24-hour outdoor - near main entrance**

### **ALSEA - JOHN BOY'S ALSEA MERCANTILE STORE**

186 E Main St - Alsea

Mon thru Sat 6 AM to 8 PM

Sun 7 AM to 8 PM

### **MONROE - CITY HALL**

664 Commercial St - Monroe

Mon thru Fri 8 AM to 5 PM\*

### **PHILOMATH - PUBLIC LIBRARY**

1050 Applegate St - Philomath

Mon, Thu, Fri, & Sat 10 AM to 5 PM

Tue & Wed 10 AM to 8 PM

# LINN BENTON COMMUNITY COLLEGE

## ZONE 6-7 (B)

### R. KEITH FROME

**Occupation:**  
Dentist

**Occupational Background:**  
General Dentist in solo private practice in Corvallis from 1994 to the present day  
Associate Dentist in Eugene from 1993 to 1994  
Associate Dentist in Lebanon from 1991 to 1993  
Dentist in the United States Air Force Reserves-1991 to 1995  
Dentist in the United States Air Force-1985 to 1991

**Educational Background:**  
United States Air Force Dental General Practice Residency at Travis AFB, CA from 1985 to 1986, Graduated with a GPR Certificate of Advanced Training  
University of Washington School of Dentistry from 1981 to 1985. DD.S. Degree  
Brigham Young University from 1975 to 1981; Majored in Zoology/Pre-Dentistry

**Prior Governmental Experience:**  
None

I am running for a position on the Linn-Benton Community College Board of Directors for the primary purpose of promoting and expanding the educational opportunities of the college to the citizens of Corvallis and Albany.

I plan to promote the needs of individuals in our communities to LBCC. At the same time, I hope to effectively communicate the needs of the college to local community members, businesses and the state legislature.

I recognize that to govern the college in the best interests of the entire college district, the board of directors must maintain consistent oversight of the college with emphasis on instructional quality, and sound fiscal policy.

*(This information furnished by Keith Frome)*

The above information has not been verified for accuracy by Benton County.

## CORVALLIS SCHOOL DISTRICT 509J

### POSITION 2



**RICK  
OSBORN**

**Occupation:** Public Information Officer at Benton County since 2008  
**Occupational Background:** Director of Communications, Southwestern Oregon Community College 2006-2008; Newspaper Reporter, Editor and General Manager 2000-2006  
**Educational Background:** Portland State University, MBA; Southern Oregon University, BA-English  
**Prior Governmental Experience:** Hoover Elementary School Site Council

**Elect Rick Osborn**

Since my family arrived in Corvallis I have been heavily involved in our local grade school. One key reason we chose the Corvallis community to be our long-term home was because of the outstanding public schools and educational opportunities for our family.

I believe strongly in the power of public education to change lives and level the playing field so that all children can be successful in life, and I support a collaborative community approach to education. The support of local businesses, government agencies, higher education, non-profits, parents and other community members all are necessary for a thriving school system. Community input is vital for schools to help students succeed, and I make it a point to always be approachable and open to discussion.

I am involved in the Hoover Elementary School Site Council and volunteered time with the Corvallis Kids Count Political Action Committee, helping to renew the school levy last fall. I found that experience rewarding. I want to serve our children, parents and the rest of the community on the Corvallis School Board.

**I am endorsed by:**

- John M. Turman
- Curtis Wright
- Annabelle Jaramillo
- Linda Modrell
- Biff Traber
- Penny York
- Amanda Halama
- Tom Johnston
- Pat Malone
- And more ...

**Elect Rick Osborn!**

*(This information furnished by Rick Osborn)*

The above information has not been verified for accuracy by Benton County.

### POSITION 2



**PETER  
LEUNG**

**Occupation:** Co-founder, International School of Modern Technology Charter School in Eugene, pending 4J School Board approval  
**Occupational Background:** Data Processing Manager-Toledo Pickling & Steel Sales Corp., Toledo, OH; System & Computer Services-Supervisor-Mobil Chemical Corp., Macedon, NY; former General Manager & owner China Delight Restaurant & La Pasta Deliziosa Italian Restaurant, Corvallis; former franchised owner & General Manager-Elmer's Pancake House, Eugene; Director, Policy Research & Planning-Construction Professionals' Development Center, Hong Kong  
**Educational Background:** Wayne State University, B.A. Computer Science; University of Windsor, M.A. Social Psychology

**Prior Governmental Experience:** Key Communicator-Corvallis School District, Springfield School District; Board Member-Eugene School District Equity & Diversity Committee; Community Rep., Diversity Committee, Northwest Christian College, Eugene; Citizen Advisory Board Member-Central Lane Metropolitan Planning Committee; Council Member & Chair-Benton County Food Services Advisory Council; Board Member & Chair-Community Alliance for Diversity, Corvallis; Community Rep.-Corvallis Police Department Community Policing Forum; Chair-September 11 Commemoration Steering Committee 2002; Board Member-TAG Regional Planning Committee, State of Oregon; Council Member-Underrepresented Minority Achievement Advisory Council, Oregon Dept. of Education; Commissioner & Chair-Oregon Commission on Asian Affairs; Non-Legislative Member-Joint Legislature Sister State Committee, Oregon  
 My role as the catalyst and organizer for a number of education and community programs illustrates my ability to build bridges & alliances, to create ways for diverse groups to work together & to engage key decision makers in open & honest dialogues.

My breadth in diverse cultural exposure & my depth of experience in community affairs, business, academia, education & in the social & political arena, prepares me for this position.

It will be a fine opportunity for me to give back to America for what I have gained during my many years of living & working in Corvallis. Through numerous civic & leadership engagements, I am very grateful for the many opportunities Corvallis has offered to me to acquire good interpersonal, oral & written communication skills.

I believe I can make a difference. At the same time, I sincerely hope that my community commitment can inspire and serve as an exemplary model for other minority members in our community.

*(This information furnished by Peter Leung)*

The above information has not been verified for accuracy by Benton County.

## CORVALLIS SCHOOL DISTRICT 509J

### POSITION 2



**JUDY K.  
BALL**

**Occupation:** Consultant (part-time)

**Occupational Background:** U.S. Department of Health and Human Services (DHHS): Substance Abuse and Mental Health Services Administration, 1998-2008; Office of the Assistant Secretary for Planning and Evaluation, 1997-98; Agency for Healthcare Policy and Research, 1985-98; Executive Office of the President, Office of Management and Budget, 1993

**Educational Background:** Ph.D., M.P.A., Public Administration, Maxwell School of Citizenship and Public Affairs, Syracuse University; B.A., Political Science, West Virginia University

**Prior Governmental Experience:** U.S. DHHS, 1985-2008; Maryland Health Care Commission Institutional Review Board, 1999-2008

I believe that a quality education is every child's key to the future. For me, education paved the road out of poverty. I owe my life's success to exceptional teachers and mentors, all committed to high standards.

Depending on the incentives they face and the priorities they pursue, our schools can succeed or fail in preparing our kids to live and work in the 21st century. As the School Board fulfills its role in this system, I aim to represent the interests of every Corvallis child, from the most affluent to the most disadvantaged. To do this, I will listen to families, teachers, administrators, staff, and my conscience to identify what is best for the kids.

In terms of technical competence, I bring over 20 years' experience in public service, where I managed large projects, contracts, multi-million dollar budgets, cutbacks, stakeholders, and staff. I made tough decisions as circumstances required; and I brought people together to find practical solutions to problems. My firsthand experience with Corvallis schools comes through my partner's two children who, so far, have attended Garfield, Hoover, and Linus Pauling.

*(This information furnished by Judy K. Ball)*

The above information has not been verified for accuracy by Benton County.

## CORVALLIS SCHOOL DISTRICT 509J

### POSITION 7



**LARRY  
PICKARD**

**Occupation:** Educator, Retired

**Occupational Background:** Teacher/School Counselor

**Educational Background:** University of San Diego, B.A. Psychology, (1971), M.A. Special Education (1975); California State University at San Bernardino, M.A. School Counseling/Pupil Personnel Credential (1988); National University, Costa Mesa, CA, School of Psychology Credential (2000); ESL/SDAIE Certificate (English Language Development Course) (2006) Riverside County School District

**Prior Governmental Experience:** None

Thirty years as a teacher and six years as a school counselor. I am familiar with the needs of students, teachers and parents. I was a principal designee for five years which gave me knowledge of the responsibilities of an administrator. As a counselor and special education teacher I was responsible for running meetings, being prepared and familiar with state and federal requirements in meeting the needs of students with special needs. I am familiar with the needs and demands of students and teachers alike as a school counselor.

I understand the responsibilities placed on teachers and administrators for students to succeed. As a parent of four children, one with special needs, I understand the demands that can occur for parent(s) and the emotional/education impact it has on students and parents alike. I am familiar with assessing students, curriculum development and the roles teachers play. I am familiar with learning styles of students, the different needs of secondary students, the pressures they may face and the educational needs of English language learners.

I have attended workshops on many educational topics, which have helped me over the years to be a better informed teacher and counselor and to use what I learned. I understand how difficult it can be in these current times to be a student, teacher and parent. With my experiences, knowledge and education I hope to be able to contribute something positive to the community of Corvallis as a school board member.

Have an honorable discharge from the U.S. Army, with fourteen years in the Army Reserve.

*(This information furnished by Larry Pickard)*

The above information has not been verified for accuracy by Benton County.

### POSITION 7



**CHRIS  
ROCHESTER**

**Occupation:** Citizen member, Corvallis School District Budget Committee; Board member and program director, Chamber Music Corvallis; Board member, Corvallis-OSU Symphony; Recent board member, Friends of the Library

**Occupational Background:** Foreign Service Officer, United States Department of State, 1985-2007; High School Teacher, American School and International High School, Paris, 1975-1985; Teacher, International School, Moshi, Tanzania, 1980-1981

**Educational Background:** M. Phil., Modern Literature, Oxford University; B.A., Government and English, Harvard University; Graduated from Baton Rouge, Louisiana High School

**Prior Governmental Experience:** Foreign Service Officer, U.S. Department of State, Diplomatic Service in Japan, Central African Republic, Bangladesh, France, Sweden, Senegal and Belgium; Vice Chair, U.S.-Belgium Commission for Educational Exchange (U.S. Government Fulbright Academic Exchange Program); Citizen member, Corvallis School District Budget Committee

Education has never been more important, but seldom more constrained by limited resources. Corvallis has worked hard to meet this challenge. Countless hours of dedicated work have been devoted to our schools by a community that believes in education, and is willing to pay and volunteer for excellence.

But nothing should be taken for granted. Budgets are under pressure. Difficult decisions have to be made. I want to protect programs, such as industrial and fine arts, business, finance and child development, which teach life skills and bring the best out of our students. Budgets are not just about numbers. Budgets are about people: students, teachers, staff, parents and voters.

I have a personal stake in public education. My daughter attended Adams Elementary, is in Linus Pauling Middle School and heads to Corvallis High School next year. I have parent, teacher and school board experience, having served as both a teacher and parent representative on school boards.

Our schools are a crown jewel of Corvallis. I will work to keep them places where all people are respected, learning is valued and excellence is earned.

*(This information furnished by Chris Rochester)*

The above information has not been verified for accuracy by Benton County.

# MONROE SCHOOL DISTRICT 1J

## ZONE 2



### MYLREA ESTELL

**Occupation:**

- Letter carrier for the USPS for the past 17 years
- Incumbent board member, Monroe School District
- Incumbent board member, Linn Benton Lincoln Education Service District

**Occupational Background:**

- Retail management, with a focus on inventory analysis and bookkeeping

**Educational Background:**

- University of Oregon studied in Math and English
- Chemeketa Community College

**Prior Governmental Experience:**

- Director, Monroe School Board for 8 years, including one year as Board Chair. During my tenure on the Monroe School Board, we have been recognized as one of the most outstanding small districts in Oregon. In 2009, Monroe High School was named by US News as one of the country's Best High Schools.
- Director, Linn Benton Lincoln Education Service District (LBL ESD) for over 5 years, currently serving as Vice Chair. As a member of the Agency Evaluation Subcommittee, I have worked to align agency goals to the work of the Board, Superintendent, and Agency; and to develop a format for evaluation which has made LBL ESD a model for effective, fiscally responsible service to school districts in Oregon.
- In 2010 The Oregon School Board Association awarded me its Leadership Institute Platinum Service award, the highest level award offered for training and service to school boards in Oregon.

**I believe that small school districts are the heart of rural Oregon Communities.** In many communities, such as Monroe, the school district is the largest employer, the center of social life, and the focus of our hopes for the future.

I believe that public service is a obligation for each of us, and I would be pleased to continue my service to the Monroe School Board. I am proud to be a member of a board on which every individual serves without a personal agenda, and always works for "what's best for the kids."

*(This information furnished by Mylrea Estell)*

The above information has not been verified for accuracy by Benton County.



## PHILOMATH SCHOOL DISTRICT 17J

### POSITION 4



**RONALD D.  
VANORDEN**

**Occupation:** Operations Manager, Mega Tech of Oregon

**Occupational Background:** Operations Management for Manufacturing and Service organizations with annual revenues of 100K to 30M.

**Education:** Oregon Institute of Technology, ASEET - Junction City Schools, Diploma, Honor Roll

**Prior Governmental Experience:** Philomath 17J 2011-12 budget committee, appointed

**Philosophy:** No one is greater or lesser, although everyone has greater and lesser capabilities, that when applied properly, will make their lives and community more robust. We need each other, so we should be kind, helpful and respectful of each other. We should be continually responsible and accountable to each other and, as necessary, hold others responsible and accountable. We are, after all, stakeholders in society.

**Statement:** Education is a cornerstone of a strong and stable society, and the coming years in particular are going to present incredible challenges to maintaining the quality of our public schools. Federal and state funding are expected to contract and our district enrollment continues to decline. Having two children who will be attending Philomath schools for the next several years, my wife and I have a vested interest in how the Board guides the district through the tough times ahead.

Our community has a reputation for strong support of our schools and I would be honored to add my leadership talents to our Board. Having attended most of the Board meetings over the last year, I have a clear understanding of the commitment required and am ready to serve. I offer the ability to remain uncannily objective and unbiased in even strained situations, the ability to act as a catalyst to help work groups perform better than the sum of their members, a notorious stamina to get the job done and a relentless focus on the mission.

Let me be part of the team that brings the strengths of our education professionals and our community together, so that we can produce a strategy that will sustain our schools and our families well into the future.

*(This information furnished by Ronald D. VanOrden)*

The above information has not been verified for accuracy by Benton County.

### POSITION 4



**DON  
CRUISE**

**Occupation:** Retired

**Occupational Background:** Teacher 3rd – 4th Grade 31 years Philomath School District

**Education:** Elem. (1-8) Gore Grade School Lebanon, Oregon; High School - Lebanon Union High School (Graduated 1963); Oregon State University (1963-1967); Oregon State University (1970-1973); Graduated OSU BA Elementary Education 1973; Masters Elementary Education Oregon State University

**Governmental Experience:** Elected Oregon Education Association Board of Directors; US Army 1970-73 Medic/Operating Room Technician

**Statement:** I believe the education of our children to be the highest priority we can have as a community. It is through education that we can ensure a bright and promising future for the generations to come. I believe that our school district should be supporting quality education for all children by

- \* providing a full year of learning with no cut days
- \* providing the opportunity for all students to be successful regardless of ability
- \* seeking input from all members of our community regarding the education of their children
- \* the high school day be a full day of learning (no off campus time during the day)
- \* being good stewards of our financial resources

As a district we should be developing a vision for our educational programs. We need total involvement from our community in establishing a vision for the education of our children for the next 5, 10, 15 years. Decisions that we face ahead should be evaluated on how they will contribute to the obtaining of the goals that we have set in our vision. As a member of the Philomath School District Board of Directors I will actively seek input from, and represent all members of our community. We have a great opportunity ahead as we work together helping our children become successful citizens.

I know these are difficult times for families as we face our current financial situations. But, one bright light is the improvement of all our school buildings in our district. The new high school is just the beginning to preparing our graduating students for the future ahead. We can continue as a community to forge ahead into the future with determination and a vision for every child in our care.

*(This information furnished by Don Cruise)*

The above information has not been verified for accuracy by Benton County.

# HOSKINS-KINGS VALLEY RFPD

## POSITION 4



### ANNA MALMBERG

**Occupation:** Attorney

**Occupational background:** Montana: associate attorney, 2001-2003; solo practice 2003-2010. Also licensed in Wyoming (2003) and Oregon (2011)

**Educational Experience:** J.D., University of Idaho, College of Law; B.A., University of Utah; A.S., Central Wyoming College; University of Wyoming (no degree); Diploma, Riverton High School

**Prior Governmental Experience:** Member of the Board of Directors for the Hoskins-Kings Valley Rural Fire Protection District, Position 4, since April 2010

#### Anna Malmberg Commitment to Community

##### Public Official Accountability

As an attorney managing a small private practice, I have acquired the skills necessary to responsibly maintain the transparent bookkeeping required for handling public funds. I believe in personal accountability, financial frugality, and due diligence. I will continue to employ these personal values to help make Hoskins-Kings Valley Rural Fire Protection District ready to serve its area residents in a time of emergency while keeping the costs of providing critical services at a minimum.

##### Community Service

Practicing law has reinforced my strongly held belief in the importance of giving back to the community. I have had the honor of serving as one of the Directors of the Hoskins-Kings Valley Rural Fire Protection District since April 2010. I have also been a Court Appointed Special Advocate (CASA) volunteer since 1995 and continue with my commitment to serve our community's youth through the Benton County CASA organization.

##### Fiscal Responsibility

Oregon's government, at all levels, must strive to provide necessary services in the most cost-efficient means possible.

*(This information furnished by Anna Malmberg)*

The above information has not been verified for accuracy by Benton County.

## PHILOMATH FIRE AND RESCUE

<b>POSITION 4</b>	<b>POSITION 5</b>
<h3 style="margin: 0;">BRENT STEINKE</h3>	<h3 style="margin: 0;">RICK ROBINSON</h3>
<p><b>Occupation:</b> I currently hold a position at Corvallis New Holland as a Service Technician</p> <p><b>Occupational background:</b> Service Technician for a New Holland dealership in Salem, Oregon; Farm manager for a large farm from Carlton, Oregon; Service Manager for a computer company in Bremerton, Washington; Veteran of the Desert Storm/Desert Shield for the United States Navy submarine service; Volunteer Firefighter/Emergency Medical Technician (EMT) for various agencies while serving in the United States Navy</p> <p><b>Educational background:</b> Currently working towards a Bachelors of Science degree from Oregon State University in Business Management; Associates of Science Degree from Linn-Benton Community College in Business Administration</p> <p><b>Prior Governmental Experience:</b> None</p> <p><b>Statement:</b> I am very excited to be running for the number four position of the Philomath Fire Board and I welcome the chance to share my background and qualifications with you.</p> <p>This would be my first service on such a board, but my years of experience in the United States Navy and in the workplace leading teams to achieve higher goals has provided me with heightened awareness of the importance of proper leadership. By bringing a background of being a former Volunteer Firefighter to the position, I can enhance the working knowledge of the board on the fire service from the eyes of a person that has been in the heat and smoke. I also can provide a perspective that enriches the knowledge base of the ever changing aspects of the fire service as a whole. I have participated in review and coordination with boards in the past which has given me good insights into such responsibilities that await me if elected. As a young candidate I will bring a fresh vision to each meeting with new ideas and effective solutions.</p> <p>In my term on the Board I will strive for consensus where possible, but will stand up for the minority opinion when conscience demands.</p> <p>I would be honored to have your vote in the upcoming election. Thank you!</p> <p style="text-align: center;"><i>(This information furnished by Brent Steinke)</i></p>	<p><b>Occupation:</b> Co-owner, Vice President Jamaro Inc. dba Rick Robinson Trucking &amp; Excavating</p> <p><b>Occupational Background:</b> Business owner and supervisor, truck driver, equipment operator, estimator, meetings and planning, fast food management and maintenance of restaurant equipment, and various wood products jobs. My work experiences in the trucking and excavating business are maintenance and repair, purchase and safety regulations, road designs, safety issues, understanding the trials of getting large trucks into residential, commercial, and industrial areas.</p> <p><b>Educational Background:</b> Graduate of the Ford Leadership classes; Grades 1-12 Philomath Schools, Graduated 1975</p> <p><b>Prior Governmental Experience:</b> I have served on the Benton County Historical Foundation's Hard Scape Committee, Board for the Philomath Youth Activities Club for approx 1 year.</p> <p>I have volunteered at the Philomath Frolic and Rodeo, Philomath Scout Lodge, Mount Union Cemetery, Philomath Downtown Association (signs), Philomath High School (softball fields), Philomath High Forestry Club, Boys and Girls Club of Corvallis, Philomath Youth Activities Club, and the Benton County Fairgrounds.</p> <p>I have been married for over 23 years, wife Jackie, son Rob, daughters, Shannon, Kayleen, and Amber, and grandson Kael. Both Jackie and I are lifetime residents of Philomath.</p> <p>Objective: To see that the safety and well being of the Philomath Rural Fire Department facilities and all crew members and volunteers. To help the board keep a great functioning fire dept. at a reasonable cost, and to seek public involvement in our department.</p> <p style="text-align: center;"><i>(This information furnished by Rick Robinson)</i></p>
<p>The above information has not been verified for accuracy by Benton County.</p>	<p>The above information has not been verified for accuracy by Benton County.</p>

# CITY OF CORVALLIS

## Measure 02-74

### BALLOT TITLE

**CAPTION:** Local Option Tax for Library, Aquatic Center, Senior Center Operations

**QUESTION:** Shall Corvallis impose \$.45 per \$1,000 of assessed value, for three years beginning July 1, 2011, for operations? This measure may cause property taxes to increase more than three percent.

**SUMMARY:** The tax revenue from this measure would be restricted as follows:

23.03% of the levy each year (approximately \$412,200 for fy 2011-12) for year-round operation of the Osborn Aquatic Center;

17.22% of the levy each year (approximately \$308,200 for fy 2011-12) for year-round operation of the Chintimini Senior Center;

11.79% of the levy each year (approximately \$211,000 for fy 2011-12) for year-round Library open hours on Mondays;

42.22% of the levy each year (approximately \$755,730 for fy 2011-12) for services and book and materials acquisitions at the Library; and

5.74% of the levy each year (approximately \$102,870 for fy 2011-12) for funding for social services.

The requested rate is estimated to raise approximately \$1,790,000 in fiscal year 2011-2012, \$1,850,870 in fiscal year 2012-2013, and \$1,924,900 in fiscal year 2013-2014 or a total of \$5,565,770 for all three years.

### EXPLANATORY STATEMENT

The City of Corvallis proposes a local option property tax levy at the rate of \$.45 per \$1,000 of assessed value, lasting for three years and beginning July 1, 2011. This measure may cause property taxes to increase more than three percent.

The tax revenue from this measure would be used to support operations of the Library, the Osborn Aquatic Center and the Chintimini Senior Center, as well as for allocations to social service agencies. In addition to tax revenue from this measure, general fund money would be required to continue funding these operations. The revenue from the levy would be restricted to these uses. Among these uses, distribution of the revenue would also be restricted in the following manner:

23.03% of the levy each year (approximately \$412,200 for fy 2011-12) toward for year-round operation of the Osborn Aquatic Center, including programs such as swimming lessons, therapy classes, youth special needs classes, water safety, High School swim practice, swim meets, fitness classes, and lap swimming;

17.22% of the levy each year (approximately \$308,200 for fy 2011-12) for year-round operation of the Chintimini Senior Center, including programs such as senior meals, health and fitness, life long learning classes, support groups, tax aide assistance, volunteer recruitment and coordination;

11.79% of the levy each year (approximately \$211,000 for fy 2011-12) for year-round Library open hours on Mondays;

42.22% of the levy each year (approximately \$755,730 for fy 2011-12) for operation of the Corvallis-Benton County Public Library, including the acquisition of books, periodicals, and other library materials; and programs such as preschool reading readiness services for families and child care providers; for volunteer recruitment and coordination; and

5.74% of the levy each year (approximately \$102,870 for fy 2011-12) for funding social service programs that provide emergency or transitional assistance, such as aid in obtaining food, water, shelter, warmth, clothing, safety, acute health care, or access to information about obtaining this assistance.

The requested rate is estimated to raise approximately \$1,790,000 in fiscal year 2011-2012, \$1,850,870 in fiscal year 2012-2013, and \$1,924,900 in fiscal year 2013-2014 or a total of \$5,565,770 for all three years.

(Submitted by City of Corvallis)

# CITY OF CORVALLIS

## Measure 02-74

### ARGUMENT FOR:

**VOTE YES ON #02-74  
MAY 17, 2011**

For many years Corvallis has boasted an excellent, nationally recognized Public Library. This is the result of a community tradition of both financial support and personal involvement. Currently, **citizens give over 14,000 volunteer hours every year** helping to make a range of services and programs possible.

**With visits of over 5200 daily, our Library System is one of the most heavily used, for its size, in the Nation.** It is Corvallis-Benton County's most heavily used service and is open to all without regard to age, income, or circumstance.

**Our Library is facing a reduction of \$967,610 in next year's Budget.** This cut would come on top of the loss in the current year's Budget of over \$500,000 which reduced services and forced closure on Sundays. If the proposed cut of \$967,610 is made the **Library will have to close another day, leaving it open only 5 days per week - the fewest days open in decades. There will be fewer books, magazines, CDs, and reduced access to electronic data services. Longer reserve lines, check out lines, and fewer programs for children and adults will be inevitable.**

Yes times are tough, but this only means the Library is more important to more residents than ever. Bad times have always brought out the best in our Corvallis community. **In 1930 the citizens of Corvallis voted to tax themselves to build their first library building. By 1931 the beautiful, Belluschi designed Library you see today was dedicated.** These were dark years during the 20th Century's worst Depression and Corvallis needed its Library more than ever.

**BE A PART OF THE CORVALLIS TRADITION. VOTE YES ON  
#02-74  
MAY 17TH TO KEEP OUR LIBRARY OPEN AND HEALTHY.**

*(This information furnished by  
Corvallis-Benton County Public Library Foundation)*

The printing of this argument does not constitute an endorsement by Benton County, nor does the county warrant the accuracy or truth of any statement made in the argument.

### ARGUMENT FOR:

**Please vote yes on this important levy**

The population of our community is aging. As a consequence they need a place where there are senior oriented functions such as programs promoting healthy aging, classes aimed at their interests and capabilities, appropriate support group functions, assistance with taxes and Medicare insurance options, and Meals on Wheels. This place is the Chintimini Senior Center. Closure of the Center will be devastating to many in the senior population surrounding Corvallis, as activities of the Center will have difficulty finding another location to continue their existence.

The Senior Center is bursting with activities and is a place where seniors help seniors. Approximately 9,800 volunteer hours spent by some 190 seniors helped staff the Center. Seniors assist other seniors with their taxes, help them understand and make the appropriate health insurance benefits decisions, lead and participate in various support groups, teach some of the classes, and in general help make the Senior Center operate efficiently and effectively. These seniors give back to their community in a very effective way and help others to remain independent longer. If the Senior Center should close these benefits would be lost to the City and the senior population.

In the last six months of 2010 more than 20,000 people made over 40,000 visits to the Center. There has been a continual increase in the use of the Center, and with more boomers reaching retirement age each day, the need for the Senior Center keeps increasing. We support measure 02-74 because it will continue the operation of this invaluable resource for the community and its seniors. Please join us in voting for 02-74.

Sadie E. Newton  
Lynda Wolfenbarger  
Norm Seward  
Larry Earhart

*(This information furnished by the  
Senior Citizen Council of Benton County)*

The printing of this argument does not constitute an endorsement by Benton County, nor does the county warrant the accuracy or truth of any statement made in the argument.

# CITY OF CORVALLIS

## Measure 02-74

### ARGUMENT FOR:

**PLEASE VOTE YES ON 02-74**

The Senior Citizen Foundation of Benton County supports 02-74 because it continues the operation of the Chintimini Senior Center. As Center users, we know it's a lifesaver, a beehive of activity, and a place of opportunity.

The Senior Center houses the operating center for the Corvallis Meals on Wheels program. This program provides approximately 90 hot, balanced meals per day to home bound people who otherwise might not get the nutrition they need. An additional 10 to 15 people per day eat a hot meal at the Center. Without the space and facilities provided at the Senior Center site this program may have to shut down, as there may not be another available facility for food preparation and distribution in Corvallis.

The Center activities include support groups, wellness classes, computer labs, travel programs, tax preparation assistance, Senior Health Insurance Assistance (SHIBA), and more. Seniors of all ages use the Center's programs to maintain their physical and intellectual fitness. They know continued health and independence depends on staying active. The "boomer" generation of seniors has begun utilizing the Center. Demand is increasing for activities that meet their desire for self-actualization, new skills, and changing fitness and personal development options. Without the Center there will not be a facility that can accommodate these needs.

Corvallis is a better place because of the Chintimini Senior Center. We are a fuller, richer community when we invest in the continued well-being of all our citizens. The Center needs your vote and your support.

William F. Goslow  
Michael J. Waters  
Alice Young  
Elizabeth Spatafora  
Don Jones

*(This information furnished by the Senior Citizen Foundation of Benton County, Inc.)*

### ARGUMENT FOR:

**YES ON MEASURE 02-74**

As a grassroots community group working for passage of Measure 02-74, Friends of Corvallis believes fervently that the success of our efforts is absolutely essential. We know that raising revenue, even moderately on a temporary basis, imposes sacrifices. But we also know that sacrifices can be transformed into wise investments if they are made to maintain quality programs.

That is why we must continue to balance our budget carefully. We know that the city's revenues have been significantly reduced because of the national recession and that slow recovery will be prolonged for some time.

In coping with this dilemma, city leaders and staff have been working hard to maintain essential services while eliminating jobs, scaling back programs, spending down reserves, and making substantial cuts -\$2.2 million this year alone. But even this is not enough. Another \$3.1 million shortfall is projected for next year. As Corvallis residents who care about our local quality of life, we can help.

A "yes" vote on Measure 02-74 will enable the city to protect valued and essential services from otherwise devastating cuts. Without this three-year local option levy, our library will close on Mondays in addition to Sundays. Its budget for purchasing new materials will be slashed. Osborn Aquatic Center will be shut down completely. So will Chintimini Senior Center. And the city's support for vital social services will be severely reduced.

Friends of Corvallis are proud of our city's livability and quality of life. We know it is enhanced by a superior library, an excellent and safe aquatic center, a senior center offering essential programs and services, and social services support for our most vulnerable citizens. We need to do what we can to protect these valued services.

Join us. Be a Friend of Corvallis. Vote "Yes" on Measure 02-74.

*(This information furnished by Friends of Corvallis PAC)*

The printing of this argument does not constitute an endorsement by Benton County, nor does the county warrant the accuracy or truth of any statement made in the argument.

The printing of this argument does not constitute an endorsement by Benton County, nor does the county warrant the accuracy or truth of any statement made in the argument.

# CITY OF CORVALLIS

## Measure 02-74

### ARGUMENT FOR:

**Friends of Corvallis urge your "yes" vote on Measure 02-74.**

Here's why!

- (1) Without the funds raised by this three-year local option levy, access to public library services would be reduced to a sub-standard level. The addition of a Monday closure to the current Sunday closure and the hours already reduced on other days would allow only 46 hours of library use each week for the 2,500 people a day on average who currently use library services.
- (2) In addition, the library materials budget would be slashed 43%, translating to the staggering loss of 13,000 items purchased each year, longer waiting times, delays in replacing computers, continued use of outdated software, and a general reduction in the quality of what has been a nationally recognized library.
- (3) Osborn Aquatic Center would close eliminating swimming lessons for 5,000 youth each year. Also eliminated: water exercise classes for 45,000 annually, the loss of a critically important practice facility for local swim teams and a sought after venue for competitive swim meets which attract visitors and more than \$1 million annually in tourism-related revenue. Closure of this \$15 million investment would still entail approximately \$195,000 maintenance expenses.
- (4) Chintimini Senior Center would close, forcing relocation for important services such as meals for seniors, assistance with completing tax forms and health benefit information and other offerings that generate more than 70,000 visits annually to the center.
- (5) Reduction of the City-supported social services budget by \$129,000 would negatively impact allocations to local agencies that serve our most vulnerable citizens. These reductions also impact public safety and other city services. Statistics above are from the City Manager's report to the City Council, November 22, 2010.

As a caring community - as friends of Corvallis — we must avoid these cuts. Vote "yes" on Measure 02-74. Keep kids and adults reading, swimming, and living in our quality city!

*(This information furnished by Friends of Corvallis, a Political Action Committee)*

### ARGUMENT FOR:

**Please help save Osborn Aquatic Center and Otter Beach! Vote YES for 02-74.**

Due to budget cuts, our community's only public swimming pool is scheduled to close on July 1, 2011. Along with teaching thousands of children swimming lessons each year and helping Seniors gain access to low-impact therapy classes, did you know Osborn is also home to over 10 teams and clubs?

Work ethic, character, compassion, team work, high self-esteem and physical fitness are just a few of the positive attributes that team members come away with each and every day by being a part of a team at Osborn.

These teams and clubs support children as young as 5 years old all the way up to Masters swimmers in their 80's. Osborn provides daily access, in which, if closed, many of these people would not be able to participate. These teams are an incredibly important part of our community. Teams like Special Olympics, High School Water Polo, Oregon State Women's Swim Team, Willamette Valley Kayak and Canoe Club all bring benefits to Corvallis that are not easy to replace.

According to Corvallis Tourism, Osborn and these teams bring in an estimated \$1.5 million of outside money every year, which is spent at local businesses right here in our community.

Osborn is vital to the development of young children across Corvallis and greatly enhances the quality of life for thousands more. Please help keep Corvallis great and save the services used by thousands in our community, from infants to seniors alike.

Vote "Yes" for Measure 02-74.

Larry Liebowitz, OSU Women's Swim Team  
 Greg Bostrom, Corvallis Masters Team  
 Rex Watkins, Crescent Valley High School Swim Team  
 Judy Storie, Corvallis High School Swim Team  
 Shawn Tucker, Corvallis Underwater Hockey Club  
 Joann Stoller, Special Olympics Oregon  
 Rick Guenther, Corvallis Aquatic Team  
 Jeffrey Thomson, Corvallis Water Polo Club  
 Greg Skaer, Willamette Valley Kayak & Canoe Club

*(This information furnished by Coaches, Teams and Clubs of Osborn Aquatic Center)*

The printing of this argument does not constitute an endorsement by Benton County, nor does the county warrant the accuracy or truth of any statement made in the argument.

The printing of this argument does not constitute an endorsement by Benton County, nor does the county warrant the accuracy or truth of any statement made in the argument.

# CITY OF CORVALLIS

## Measure 02-74

### ARGUMENT FOR:

Corvallis Aquatic Team  
 1940 NW Highland Dr. Corvallis, Oregon 97330  
[corvallisaquaticteam.org](http://corvallisaquaticteam.org)

Vote YES on 02-74

The Osborn Aquatic Center (OAC) is a recognized central hub of activity within the Corvallis community. As a recreational facility OAC provides broad services to the community. Employing over 120 individuals, it functions as a center for health, fitness, education, safety, and public meeting space. It serves a diverse population: infants, children, adults, seniors, people with disabilities, families, and professionals.

OAC is good for our economy. OAC is one of the top training centers in the state. Through many events, OAC brings thousands of visitors and over \$1.5M to our local economy. OAC offers a premier west coast training facility for therapy classes, AquaFitness instructor training, Liquid Degree learn-to-swim program, and WaterBabies, an award-winning program developed at Osborn.

OAC is a place where people of all ages and abilities can come to meet other community members with similar needs, exercise, and learn to swim. It provides the community with activities throughout the year ranging from swim lessons, to state championships at all levels, to Special Olympics, to children's birthday parties. As members of the Corvallis Aquatic Team, we have the opportunity to witness OAC in use at different times throughout the day and year. Not a day passes that we don't see an elderly person getting out of their house for some exercise and socialization, a baby learning to swim for the first time, or a person with special needs strengthening their body. OAC is not only a swimming facility. It is a place where families meet and where young adults get their first jobs as instructors or lifeguards. It is a place where a child may receive their first ribbon or award, or a group gathers to celebrate a special occasion.

Together with other critical services; i.e., the Library and the Senior Center, OAC has made Corvallis rank as one of the top 100 communities to live in nationally.

VOTE YES on 02-74

*(This information furnished by Corvallis Aquatic Team, Inc.)*

### ARGUMENT FOR:

**Our treasured Public Library is severely threatened. A yes vote on Measure 02-74 means we sustain quality library service.**

If the measure does not pass, the Library will close on Mondays, the materials budget for books and other media will decline by 43% (\$346,000), and staffing will shrink by 15 percent.

Cuts of this magnitude will erode service quality; specifically meaning:

- Loss of 13,000 items per year for circulation or use with a sizeable decline in periodical subscriptions and longer holds for popular items.
- Reduction in Corvallis open hours to just 46 hours per week — a significant 39 percent reduction from the number of open hours in 2003.
- Fewer resources and support for literacy efforts aimed at at-risk families who are most in need of such assistance.
- Curtailed opportunities for constructive activities for youth
- Reduced exposure to early literacy services for young children and their caregivers for preparation for reading and learning in school.
- Less timely reshelving of books, making it more difficult for the public to find recently returned materials

These practical consequences are inconsistent with Corvallis historic standards and public demand. **Corvallis' circulation per borrower is 73% higher than other libraries of comparable size!**

In recognition of the City's budget shortfall, the Library has already eliminated \$500,000 from its operations last year. It is not possible to fill the funding gap with patron assessments due to prohibition under state law. **Moreover, free access by all without regard to age, income, or circumstance is basic to the definition of Public Library.**

How much will it cost to make a positive difference for our community through passage of this three year levy? The estimate is less than \$7.00 per month based on a house assessed at \$180,000. **The value received is well worth the incremental price!**

**We urge you to VOTE YES on MEASURE #02-74**

*(This information furnished by The Friends of the Corvallis-Benton County Public Library)*

The printing of this argument does not constitute an endorsement by Benton County, nor does the county warrant the accuracy or truth of any statement made in the argument.

The printing of this argument does not constitute an endorsement by Benton County, nor does the county warrant the accuracy or truth of any statement made in the argument.



## CITY OF CORVALLIS

### Measure 02-74

#### ARGUMENT FOR:

Please vote YES for 02-74 and save Osborn Aquatic Center.

Osborn Aquatic Center is more than just a recreational facility. It is a lifeline for many people with disabilities who otherwise would not be nearly as independent as they are today. The classes offered at Osborn help many of us reduce our dependence on caregivers and other services. Through aquatic therapy, we maintain and gain the ability to engage in activities of daily living as well as rebuild and recover strength after being affected by a stroke, accident, or other catastrophic events or diseases.

Osborn serves individuals who are not able to afford physical therapy and who suffer from a variety of illnesses, including MS, stroke, Parkinson's, lupus, fibromyalgia, chronic fatigue, cardiovascular disease, arthritis, and many other complications. Osborn allows us to stay as active as our illnesses will allow.

Without the pool, the cost to individuals and to the community would be significant. In the interest of maintaining a healthy community, please vote yes for measure 02-74 and help us simply maintain our quality of life!

Sincerely,

Robin Bouvette  
MS Society of Corvallis

*(This information furnished by Multiple Sclerosis Society of Corvallis)*

The printing of this argument does not constitute an endorsement by Benton County, nor does the county warrant the accuracy or truth of any statement made in the argument.

**NO ARGUMENTS AGAINST  
THIS MEASURE WERE FILED**

# HARRISBURG SCHOOL DISTRICT 7

## Measure 22-105

### BALLOT TITLE

**CAPTION:** Two-Year Local Option Tax for District Operations

**QUESTION:** Shall Harrisburg School District levy \$0.90 per \$1,000.00 of assessed value for general operations for two years beginning in 2011-12? This measure may cause property taxes to increase more than three percent.

**SUMMARY:** This measure authorizes Harrisburg School District 7 to levy a property tax in the amount of \$0.90 per \$1,000.00 of assessed value each year for two years. If this measure passes, the local option tax would be used to help finance District general operations. An estimate of the total amount to be collected each fiscal year from this levy is:

2011-12	\$ 302,759.21
2012-13	\$ 305,786.80

The estimated tax cost for this measure is an ESTIMATE ONLY based on the best information available from the county assessor at the time of estimate.

### EXPLANATORY STATEMENT

The local option levy authorizes Harrisburg School District No. 7 to levy a property tax in the amount of \$0.90 per \$1,000.00 of assessed value each year for two years. The taxes would be used to help finance District operations.

An estimate of the total amount to be raised each fiscal year is:

2011-2012	\$ 302,759.21
2012-2013	\$ 305,786.80

The estimated tax cost for this measure is an ESTIMATE ONLY based on the best information available from the county assessor at the time of estimate.

The Board of Directors of the Harrisburg School District 7 opted to limit the local option levy to two years duration in the hope that the economy will continue to improve and thereby negate the necessity for any further local option levies.

(Submitted by Harrisburg School District 7)

**NO ARGUMENTS FOR OR AGAINST  
THIS MEASURE WERE FILED**

## VOTER REGISTRATION, BALLOT INFORMATION AND CONTACTS

### VOTER REGISTRATION AND BALLOT INFORMATION

**Who is qualified to vote:** In order to receive a ballot, voters must be registered to vote in their county of residence no later than 21 days prior to the election. However, if a registered voter moves within the State of Oregon, that voter can update his/her voter registration information and receive a ballot up until **8:00 PM on Election Day, which is May 17, 2011.**

**Absentee Ballots:** It is against the law to have anyone forward a ballot to you. Even the United States Postal Service will not forward a ballot. If you will be out of the area during the election period and would like to receive a ballot, contact our office and request that an "Absentee Ballot" be sent directly to you.

**If you lose your ballot or make a mistake while voting it:** If your ballot is lost, destroyed, damaged, or you made a mistake in marking your ballot, you may contact the Benton County Elections Office to request a replacement ballot. The replacement ballot will be mailed to you, as long as your request is received no later than the 5<sup>th</sup> day before Election Day. After the 5<sup>th</sup> day before the election, you may pick up a ballot by coming to the Benton County Elections Office.

If you have already mailed your original ballot before you realize you made a mistake, your ballot has been cast, and you are not eligible for a replacement ballot.

**In order for your ballot to be counted** it must be returned to any elections office or official ballot dropsite in the State of Oregon, **no later than 8:00 PM Election Day, May 17, 2011.**

#### **Postmarks DO NOT count!**

Ballots must be returned enclosed in the official ballot return envelope and **signed by the voter** in order to be counted. Even people with Power of Attorney do not have authority to sign another person's ballot.

Use a **PEN OR PENCIL** to vote your ballot.

If you have other questions about voter registration, your ballot, or voting in Benton County you are encouraged to call 541 766-6756.

### CONTACT INFORMATION

#### **Benton County Elections Website**

The website is an excellent source of information concerning voter registration, absentee voting, frequently asked questions, and links to other local, state, and federal election officials. You will also find election specific information such as election filings, results, voter turnout and this voters' pamphlet on our website [www.co.benton.or.us/admin/elections](http://www.co.benton.or.us/admin/elections).

#### **Voters with Disabilities**

If you need help voting because of a disability, contact the Benton County Elections Office. Deputized elections staff is available to assist you in casting a ballot; or ask about alternate voting formats.

#### **Benton County Elections Office**

Phone: 541 766-6756  
TTY: 541 766-6080  
Fax: 541 766-6757  
Website: [www.co.benton.or.us/admin/elections](http://www.co.benton.or.us/admin/elections)  
Email: [bcelections@co.benton.or.us](mailto:bcelections@co.benton.or.us)

#### **State of Oregon**

Phone: 1 866 673-8683  
Website: [www.oregonvotes.org](http://www.oregonvotes.org)

#### **Información en Español**

Para mas información sobre las elecciones en el condado de Benton

llame al: 541 766-6756  
TTY: 541 766-6080  
limitaciones auditivas  
o al numero gratis: 1 866 673-8683

Condado: [www.co.benton.or.us/admin/elections](http://www.co.benton.or.us/admin/elections)  
Estado: [www.oregonvotes.org](http://www.oregonvotes.org)

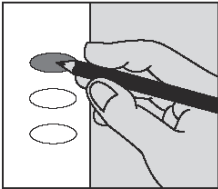
Se Habla Español

# CHECK YOUR BALLOT AND FREQUENTLY ASKED QUESTIONS

## HOW TO CAST YOUR BALLOT

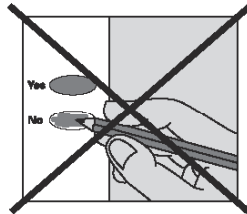
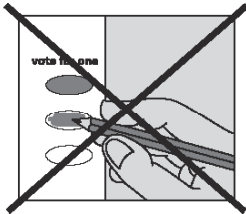
### check your ballot!

Use a pen or pencil to fill in the ovals next to your choices.



If you vote for more candidates than allowed, or if you vote **both Yes and No** on a measure, it is called an overvote.

Your vote **will not count** for that candidate or measure.



You do not have to vote on all contests. Those you do vote on will still count.

Contact Benton County Elections to request a replacement ballot if:

- you make a mistake
- your ballot is damaged or spoiled
- you lose your ballot

### **Benton County Elections**

Phone: (541) 766-6756  
Fax: (541) 766-6757  
TTY: (541) 766-6080  
Email: [bcelections@co.benton.or.us](mailto:bcelections@co.benton.or.us)

**1 866 ORE VOTE / 673 8683**  
**Se Habla Español**  
[www.oregonvotes.org](http://www.oregonvotes.org)

rev 9/04

## FREQUENTLY ASKED QUESTIONS

### **Q. What do I do when a ballot for someone else is delivered to my home?**

A. It is important that you **DO NOT THROW THE BALLOT AWAY**. Write on the envelope that the person is no longer at that address and **PUT IT BACK INTO THE MAIL**. Postage is not needed. Once our office has received the undeliverable ballot you will stop receiving them.

### **Q. I forgot to put my ballot in the secrecy envelope. Will you count my ballot?**

A. Yes. We recommend that voters use the secrecy envelope. You can open the ballot return envelope, place your ballot in the secrecy envelope and reseal it. Write "Opened By Voter" along the portion that you opened and sign your full name there as well. That way we will know that the voter was the one who opened the ballot and can count it. However, if your ballot comes back without a secrecy envelope, it will still be counted.

### **Q. How do you know I am the one who voted my ballot?**

A. The signature on EACH ballot return envelope is verified. Elections staff compares the signature on your ballot return envelope with the signature on your Voter Registration Card. If the signatures do not match we will contact you to help us resolve the issue. **Remember:** Even a person with a Power of Attorney cannot sign your ballot. Only you can.

### **Q. When do election results become available and how can I find out what they are?**

A. Election results are available on the Benton County Elections website at: [www.co.benton.or.us/admin/elections](http://www.co.benton.or.us/admin/elections). First results become available between 8:20 PM and 9:00 PM on Election Night. Further results will be added as ballots are received and tallied. All ballots cast within Benton County will be counted and the results posted before the election staff leaves Election Night. However, ballots returned in other counties must be sent to Benton County for later tally and the election cannot be certified until all voters whose ballots were challenged have had an opportunity to respond to those challenges.

**Benton County  
VOTERS' PAMPHLET  
Special Election  
May 17, 2011**

Elections Office open 7:00 AM to 8:00 PM Election Day

PUBLISHED BY  
THE BENTON COUNTY CLERK  
AT THE DIRECTION OF THE BOARD OF COMMISSIONERS



Election Questions?  
Benton County Elections Office  
Phone: 541 766-6756  
TTY: 541 766-6080  
Fax: 541 766-6757  
Website: [www.co.benton.or.us/admin/elections](http://www.co.benton.or.us/admin/elections)  
Email: [bcelections@co.benton.or.us](mailto:bcelections@co.benton.or.us)