

# BENTON COUNTY VOTERS' PAMPHLET



## PRIMARY ELECTION MAY 15, 2012

This begins the Benton County insert in the State Voters' Pamphlet. The county insert can be identified by the grey bar on the outside edge of each page.

Published by the County Clerk at the direction of  
the Benton County Board of Commissioners.



**BOARD OF COMMISSIONERS**

408 SW Monroe Ave., Suite 111

P.O. Box 3020

Corvallis, OR 97339-3020

(541) 766-6800

FAX (541) 766-6893

**Dear Benton County Residents:**

An election will be held in Benton County on May 15, 2012. If you are a registered voter you will have an opportunity to exercise your right to vote on Federal, State, County and local candidates and measures.

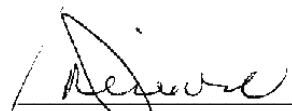
The Board of Commissioners has directed the County Clerk to publish this **Benton County Voters' Pamphlet** as a way of providing voters with useful information concerning their choices for this important election. To bring this information to the voters in the most efficient way, the pamphlet will be available on our website at [www.co.benton.or.us/admin/elections](http://www.co.benton.or.us/admin/elections); at the Benton County Elections Office; and will be included with the State Voters' Pamphlet, a copy of which will be sent to each Benton County household.

Please remember that **all ballots must be received at an official ballot drop site in Oregon before 8:00 PM on Tuesday, May 15, 2012**. You can mail your ballot, or drop it at one of the official ballot dropbox locations listed on the website and in this pamphlet.

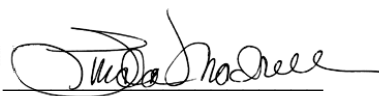
If you have questions or concerns, the Benton County Elections office is located in the historic Benton County Courthouse, 120 NW 4th Street, Corvallis, Oregon. You will also find information on marking your ballot and obtaining a replacement ballot in this pamphlet.

We hope this information will help you become better informed about the candidates and issues in this election.

Sincerely,

  
Jay Dixon  
Commissioner

  
Annabelle Jaramillo  
Commissioner

  
Linda Modrell  
Commissioner

**VOTE**

# TABLE OF CONTENTS AND OFFICIAL BALLOT DROPSITES

TABLE OF CONTENTS	BALLOT DROPSITES
<p>Letter from the Board of Commissioners 2</p> <p>Table of Contents 3</p> <p>Official Benton County Ballot Dropsites 3</p> <p style="text-align: center;">-----CANDIDATES-----</p> <p><u>Commissioner, Position 2</u></p> <p style="padding-left: 20px;">Jay Dixon, Democrat 4</p> <p style="padding-left: 20px;">Jerry J. Jackson, Sr., Republican 4</p> <p><u>Commissioner, Position 3</u></p> <p style="padding-left: 20px;">Annabelle Jaramillo, Democrat 5</p> <p style="padding-left: 20px;">Betsy L. Close, Republican 5</p> <p style="text-align: center;">-----MEASURES-----</p> <p><u>City of Albany</u></p> <p style="padding-left: 20px;">22-110 Local Option Tax Levy 6</p> <p style="padding-left: 20px;">22-112 210 Clover Ridge Annex 7</p> <p style="padding-left: 20px;">22-113 120 Clover Ridge Annex 8</p> <p><u>City of Corvallis</u></p> <p style="padding-left: 20px;">02-78 McFadden Annexation 9</p> <p style="padding-left: 20px;">02-78 Arguments in Favor 10</p> <p><u>Alsea Service District</u></p> <p style="padding-left: 20px;">02-77 Human Services District 11</p> <p style="padding-left: 20px;">02-77 Arguments in Favor 12</p> <p style="text-align: center;">-----</p> <p>Registration &amp; Ballot information 13</p> <p>Contacts &amp; websites 13</p> <p>How to cast your ballot 14</p> <p>Frequently asked questions 14</p>	<p>*All ballot dropsites open until 8 PM Election Day</p> <p>Directions to dropsites can be found on our website at <a href="http://www.co.benton.or.us/admin/elections">www.co.benton.or.us/admin/elections</a></p> <p><b>BENTON COUNTY ELECTIONS OFFICE</b>                      Courthouse - 120 NW 4th St - Corvallis                      Basement - Room 13                      Mon thru Fri 8 AM to 5 PM*                      (541) 766-6756</p> <p><b>County Courthouse 24-hour dropboxes:</b>                      Front walk of courthouse near front steps                      Handicap entrance on 5th Street side                      Across the street at 180 NW 5th Street</p> <p><b>CORVALLIS - LINCOLN HEALTH CENTER</b>                      121 SE Viewmont Ave - Corvallis                      24-hour drive through in parking lot</p> <p><b>CORVALLIS - TIMBERHILL - WELLS FARGO BANK</b>                      2543 NW Kings Blvd - Timberhill Shopping Center                      24-hour drive through</p> <p><b>CORVALLIS - PUBLIC LIBRARY</b>                      645 NW Monroe Ave - Corvallis                      Mon thru Thu 10 AM to 8 PM                      Fri &amp; Sat 10 AM to 6 PM</p> <p><b>CORVALLIS - OSU VALLEY LIBRARY</b>                      OSU Campus                      Mon thru Thu 7:30 AM to Midnight                      Fri 7:30 AM to 10 PM                      Sat 10 AM to 10 PM                      Sun 10 AM to Midnight</p> <p><b>CORVALLIS - LBCC BENTON CENTER</b>                      757 NW Polk Ave - Corvallis                      Mon thru Thu 8 AM to 9 PM                      Fri 8 AM to 4 PM</p> <p><b>CORVALLIS - CHINTIMINI SENIOR CENTER</b>                      2601 NW Tyler Ave - Corvallis                      Mon thru Fri 8 AM to 4 PM*</p> <p><b>CORVALLIS - CITY LIMITS MARKET</b>                      5800 NW Highway 99W - north of Corvallis                      Mon thru Fri 6:30 AM to 8 PM                      Sat &amp; Sun 8 AM to 8 PM</p> <p><b>ALBANY - RAY'S FOOD PLACE</b>                      621 Hickory Ave - North Albany Shopping Center                      24-hour outdoor - near main entrance</p> <p><b>ALSEA - JOHN BOY'S MERCANTILE STORE</b>                      186 E Main St - Alsea                      Mon thru Sat 6 AM to 8 PM                      Sun 7 AM to 8 PM</p> <p><b>MONROE - CITY HALL</b>                      664 Commercial St - Monroe                      Mon thru Fri 8 AM to 5 PM*</p> <p><b>PHILOMATH - PUBLIC LIBRARY</b>                      1050 Applegate St - Philomath                      Mon, Thu, Fri, &amp; Sat 10 AM to 5 PM*                      Tue &amp; Wed 10 AM to 8 PM</p>

# BENTON COUNTY

## Commissioner, Position 2



**JAY  
DIXON**  
  
**DEMOCRAT**

**Occupation:** Chair, Board of Commissioners  
**Occupational Background:** Small Business Owner; Financial Executive; Criminal Justice Education and Training Center Director; Seattle Police Department Lieutenant.  
**Educational Background:** BS, University of San Francisco; Pacific Program, University of Oregon.  
**Prior Governmental Experience:** Chaired Corvallis Budget Commission, Cascades West Council of Governments Board, Willamette Criminal Justice Council, Corvallis Community Policing Forum, Oregon Counties Public Safety Committee. Region 4 Workforce Investment Board Executive Committee. Linn-Benton Housing Authority Commissioner. Corvallis School Board member.

**Re-elect Jay Dixon.**

**Performance Counts. Experience Matters.**

Elected officials run on their records. Here's mine, in areas where I seek to do more for a safer, sounder county. I am honored to serve you and welcome your vote to continue.

**Economy** - Promoted county "buy local" policy; currently serve on Corvallis Economic Development Commission; former Corvallis Chamber of Commerce president.

**Public Safety** - Helped prevent and reduce crime while serving on the Federal Advisory Committee on Juvenile Justice, chairing Oregon's Juvenile Crime Prevention Advisory Committee, serving on Oregon's Commission on Children and Families and Community Corrections Commission and supporting our drug treatment courts.

**Health Care** - Helped secure Benton County's rank as #1 among Oregon counties in healthy living; secured federal funds to provide low-cost health care to all county residents and open clinics in Monroe and Corvallis; supported community health district formation in Alsea.

**Education** - Currently serve on OSU/Corvallis Collaboration Steering Committee; supported Corvallis and Philomath outdoor schools and Kids Day for Conservation; served on 509J School Board.

**Housing** - Supported Linn-Benton Housing Authority, Willamette Neighborhood Housing Services and Benton Habitat for Humanity efforts to provide affordable housing. Co-chairing Oversight Committee for the 10-Year Plan to End Homelessness in Benton County.

**Community Service** - Served on six non-profit boards serving children, the arts, animals, business, and the homeless.

**Environment** - Opened Fort Hoskins Historical Park, Beazell Memorial Forest and Fitton Green Natural Area, adding 1,000 acres of open space to Benton County.

*(This information furnished by Jay Dixon)*

The printing of this statement does not constitute an endorsement by Benton County, nor does the county warrant the accuracy or truth of any statement made.

## Commissioner, Position 2



**JERRY J.  
JACKSON, SR**  
  
**REPUBLICAN**

**Occupation:** Oregon Licensed Investigator; Code Enforcement Officer, Polk County

**Occupational Background:** Polk County Community Development Manager; Community Service/Work Release Coordinator; Business Owner; School Board Member, St. Mary's School; US Army Veteran

**Educational Background:** Studied Political Science, Oregon State University; Associates Degree Linn-Benton Community College; Certificate from Trend College in Travel & Tourism Management; The Ford Family Foundation, Ford Institute Leadership Program ASFPM Certified Floodplain Manager

**Prior Governmental Experience:** Polk County Community Development Manager; Philomath City Council President; Budget/Finance/Administration Board and Ordinance Committees; Philomath Budget Chair; Philomath Budget & Police Committee

**ACCOMPLISHMENTS:** Coming from a family of community service minded parents set a lifelong ambition for Jerry to be involved in community. Having experienced working at Polk County brought firsthand knowledge with all levels of the county. The City of Philomath has greatly benefited from Jerry being part of their team both as a citizen and a council member. Jerry has spent his life volunteering in his community both in government and community service. He offers Benton County voters a spirit of transparency and accountability to its citizens. Jerry has worked with the Bureau of Land Management to start programs like Dump Stoppers and Noxious Weed Programs; Jerry has been given the honor of "Knight of the Year" three times since 2002 by the Corvallis Knights of Columbus.  
Jerry's plan is to:

**RESTORE FISCAL RESPONSIBILITY:** Bring spending under control; create and restore funding sources; make accountability the first rule of the Commission; carefully consider the needs of Benton County's citizens

**GIVE PUBLIC SAFETY PRIORITY:** Work to provide the Sheriff's Department necessary facilities and equipment needed to protect the citizens of Benton County

**IMPROVE BENTON COUNTY'S ROADS:** Improve roads to guarantee citizens safe and efficient transportation; maintain existing roads now to save \$Millions later  
Jerry's Pledge

"I am here to represent the concerns of Benton County's citizens above the concerns of special interests and partisan politics and to foster cooperation between county government, cities and rural areas."

*(This information furnished by  
Committee to Elect Jackson for Commissioner)*

The printing of this statement does not constitute an endorsement by Benton County, nor does the county warrant the accuracy or truth of any statement made.

# BENTON COUNTY

## Commissioner, Position 3

## Commissioner, Position 3



**ANNABELLE  
JARAMILLO**  
  
**DEMOCRAT**



**BETSY L.  
CLOSE**  
  
**REPUBLICAN**

**Occupation:** Benton County Commissioner

**Occupational Background:** Citizens' Representative for Governor Kitzhaber; research botanist; civil rights advocate; teacher.

**Educational Background:** B.S., M.S. - Biology, Portland State University

**Prior Governmental Experience:** Thirty-seven years of local, state and federal public service. Association of Oregon Counties Board, Legislative Committee, Public Lands and Energy and Environment Subcommittees; Council of Forest Trust Land Counties; Governor's Law Enforcement Contact Committee; 10-year plan for Oregon Project; Equality Task Force; Judicial Fitness and Disabilities Commission; Bureau of Land Management Resource Advisory Committee; Coast Range Province Advisory Committee; Oregon Sustainability and Progress Boards; Federal Forest Lands Advisory Council; Pacific Northwest Research Station.

Community Service: Governing Board, Community Services Consortium; United Way of Benton County; American Leadership Forum; American Civil Liberties Union of Oregon; Mary's Peak Natural Resources Interpretive Center; Foster Grandparents; Economic Vitality Partnership.

**Annabelle Jaramillo:**

- Knows Benton County residents value their neighbors, good jobs and a clean, healthy environment.
- Is an excellent steward of county resources, using them wisely to provide quality services.
- Unifies our county by encouraging citizen involvement and respecting county workers.

**Annabelle Jaramillo** is a thoughtful, knowledgeable and respected leader.

She works with U.S. Senators Ron Wyden and Jeff Merkley, Congressmen Peter DeFazio and Kurt Schrader to secure federal funding for health services, roads and habitat restoration.

Governor John Kitzhaber knows that **Annabelle Jaramillo** is a strong advocate for the shared services that state and county government provide.

In partnership with Sheriff Diana Simpson and District Attorney John Haroldson, **Annabelle Jaramillo** works to ensure effective public safety for county residents.

**"I want to continue this work!** We live in challenging times, when community needs are at an all time high. I am committed to Benton County where we and future generations can experience rich and rewarding lives." - Annabelle Jaramillo

**Re-Elect Annabelle Jaramillo, Benton County Commissioner**  
Jaramillo for Commissioner Committee, P.O. Box 396, Corvallis, OR 97339

*(This information furnished by  
Jaramillo for Commissioner Committee)*

**Occupation:** Property Management

**Occupational Background:** Oregon State Representative 1999 To 2005; Legislative Chief of Staff; Public School Teacher, Washington and Oregon; Job Developer, Benton County; Graduate Teaching Assistant, Oregon State University.

**Educational Background:** Master of Science (MS), Oregon State University; BA Education, Central Washington University; BA, Washington State University.

**Prior Governmental Experience:** Oregon State House of Representatives; Oregon Commission for Women; Oregon Coin Commission; Director, Palestine Rural Fire Board; Albany School Committee, Zone 1, Precinct Committee Woman & National Delegate.

**Personal:** Married 40 years, 4 grown children, 36 year resident of Benton County

**GOOD NEWS: We residents of Benton County do not have to have our taxes raised while our incomes fall!**

- As Legislator: Betsy Close has a **voting record** of standing against tax increases. Betsy Close will work to reduce government regulation of families and business.
- Betsy Close has **experience** working on state budgeting, serving on the House Education Committee.
- As House Business Chair: On vital business issues affecting Oregon, Betsy has the **'know how'** to attract new businesses and bring new jobs through incentives.
- As Benton County Commissioner, Betsy Close will **prioritize** our critical services, putting Public Safety and Transportation projects first to insure a safe county and good roads and highways. We will carefully use limited resources to best avail, streamlining services.
- Betsy Close will bring **common sense** to land use decisions, treating applicants fairly.

**ELECT BETSY CLOSE:  
A RECORD OF SUCCESSFULLY SERVING THE  
RESIDENTS OF BENTON COUNTY**

*(This information furnished by Close Friends PAC)*

The printing of this statement does not constitute an endorsement by Benton County, nor does the county warrant the accuracy or truth of any statement made.

The printing of this statement does not constitute an endorsement by Benton County, nor does the county warrant the accuracy or truth of any statement made.

# CITY OF ALBANY

## MEASURE 22-110

### BALLOT TITLE

**Caption:** City of Albany Ambulance, Fire, and Police Local Option Tax

**Question:** Shall Albany tax \$1.15/\$1,000.00 assessed value for Ambulance, Fire, and Police operations for 5 years starting Fiscal Year 2013-14?  
This measure may cause property taxes to increase more than three percent.

**Summary:** The City plans to use tax revenue from this measure to continue funding for six Firefighter/EMTs; a Deputy Fire Marshal and a Fire Life/Safety Educator, four Police Officers, three Civilian Community Service Officers, a Police Dispatcher, a Crime Analyst, and for related equipment and training.

The proposed rate will net approximately \$2,873,586.00 in 2013-2014, \$2,893,324.00 in 2014-2015, \$2,907,676.00 in 2015-2016, \$2,915,901.00 in 2016-2017 and \$2,917,179.00 in 2017-2018, for a total of \$14,507,666.00.

The estimated tax cost for this measure is an ESTIMATE ONLY based on the best information available from the county assessor at the time of estimate.

### EXPLANATORY STATEMENT

The City plans to use tax revenue from this measure to continue funding for six Firefighter/EMTs; a Deputy Fire Marshal and a Fire Life/Safety Educator, four Police Officers, three Civilian Community Service Officers, a Police Dispatcher, a Crime Analyst, and for related equipment and training.

The proposed rate will net approximately \$2,873,586.00 in 2013-2014, \$2,893,324.00 in 2014-2015, \$2,907,676.00 in 2015-2016, \$2,915,901.00 in 2016-2017 and \$2,917,179.00 in 2017-2018, for a total of \$14,507,666.00.

The estimated tax cost for this measure is an ESTIMATE ONLY based on the best information available from the county assessor at the time of estimate.

*(Submitted by City of Albany)*

### ARGUMENT FOR:

**Citizens for a Safer Albany  
Vote Yes  
for Albany's Ambulance, Fire, & Police  
Levy**

**In 2002, the voters of Albany approved a levy to add 18 fire and police positions to improve their level of public safety services.**

**This levy is to retain Albany's current ambulance, fire and police services.**

The approval of this levy is vital to Albany's ambulance, fire and police services.  
Without this levy 18 fire and police positions could be eliminated.

**This levy is for a tax renewal and is for regaining some funds lost due to tax compression. \***

**Think of your community and home. What, as a citizen who cares about your community, can you do to make it safe? Join us in voting YES for Albany's Ambulance, Fire, and Police Levy.**

"If the Ambulance, Fire and Police Levy fail the staffing at Albany's busiest fire station could be cut in half or we may have to close a fire station. This will put an enormous burden on our ability to protect Albany citizens. Passage of this levy will insure that Albany Fire Department can continue to provide excellent service in our community"  
--Jason Katzenstein, President Albany Firefighters Union

"The current Ambulance, Fire, & Police Levy has allowed the police department to increase patrols, investigate crimes more thoroughly, analyze crime patterns, provide dedicated drug and traffic enforcement, and respond to livability issues such as abandoned vehicles, junk and trash complaints. Our police officers and staff are committed to providing the highest level of service to our community".  
--Ben Atchley, Albany Police Captain (retired)

**Citizens for a Safer Albany was formed in 2002 by volunteer community leaders to campaign for your community's safety.**

\* Taxes could increase for new construction/new developments that have not yet been fully assessed or are not in tax compression.

**NO ARGUMENTS AGAINST THIS MEASURE WERE FILED**

*(This information furnished by Citizens for a Safer Albany, PAC)*

The printing of this argument does not constitute an endorsement by Benton County, nor does the county warrant the accuracy or truth of any statement made in the argument.

# CITY OF ALBANY

## MEASURE 22-112

### BALLOT TITLE

**Caption:** A measure proposing annexation of 210 Clover Ridge Road NE.

**Question:** Shall the 1.5 acres, located at 210 Clover Ridge Road NE, be annexed?

**Summary:** The following described real property, located in Linn County, Oregon, shall be annexed to the City of Albany upon obtaining a favorable majority vote of the people.

The property is generally located west of Clover Ridge Road, shown on Linn County Assessor's Map No. 11S-03W-04AC; Tax Lot 703, as further described in the legal description labeled Exhibit A and map labeled Exhibit B of Albany Resolution No. 6076. The subject area (including right-of-way) contains approximately 1.5 acres.

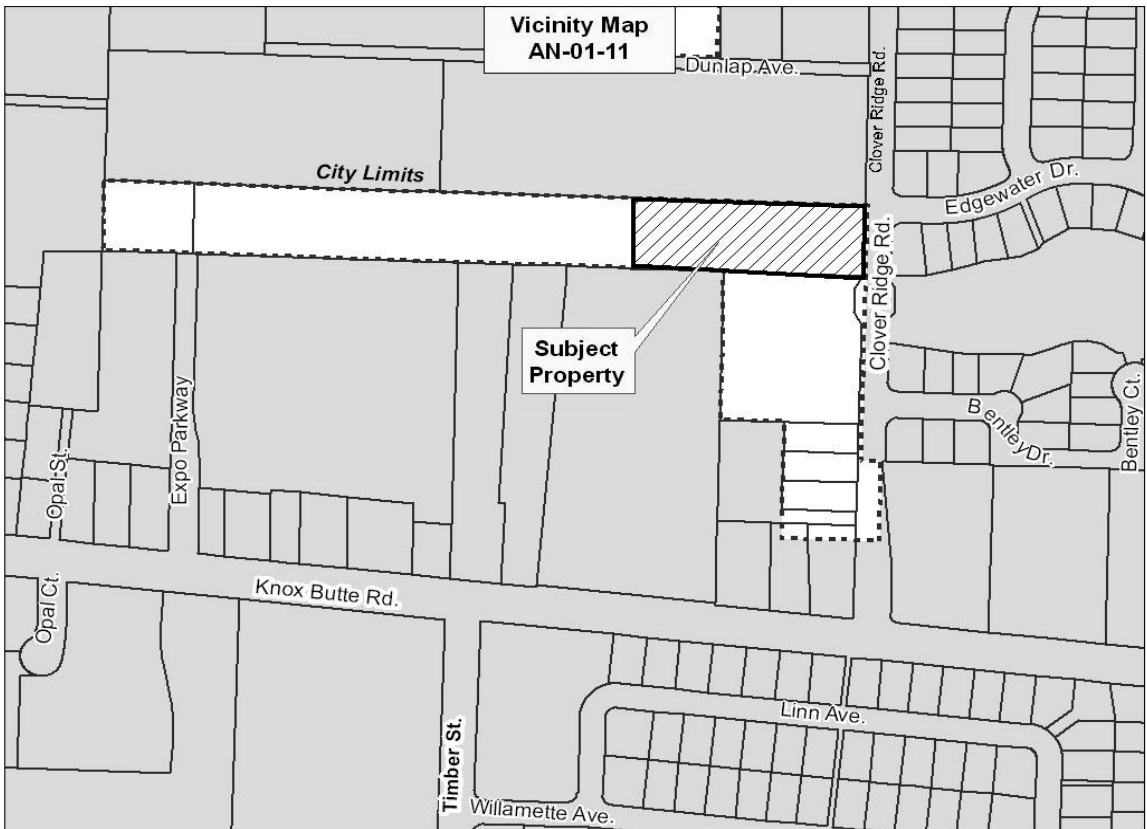
### EXPLANATORY STATEMENT

**Annexation Proposal** - The Albany City Charter was amended in 1998 to require that annexation proposals be referred to Albany voters. Accordingly, the Albany City Council has referred to the Albany voters the question of annexation for one parcel located at 210 Clover Ridge Road NE. The total area of the parcel and right-of-way to be annexed is approximately 1.5 acres.

The property owner is requesting annexation in order to be eligible to construct a church and associated parking on the subject property and abutting parcel to the north. The parcel is currently developed with one single family house, which is being used as a church office. The City is proposing a concurrent zoning map amendment that, if the annexation is approved, would zone the property RM (Residential - Medium Density). If annexed, the development of a church on the property would require a Conditional Use permit approval.

If annexed, funding for any required public infrastructure improvements needed to serve new development on these properties would be the responsibility of the property owner.

*(Submitted by City of Albany)*



# CITY OF ALBANY

## MEASURE 22-113

### BALLOT TITLE

**Caption:** A measure proposing annexation of 120 Clover Ridge Road NE.

**Question:** Shall the .25 acres, located at 120 Clover Ridge Road NE, be annexed?

**Summary:** The following described real property, located in Linn County, Oregon, shall be annexed into the City of Albany upon obtaining a favorable majority vote of the people.

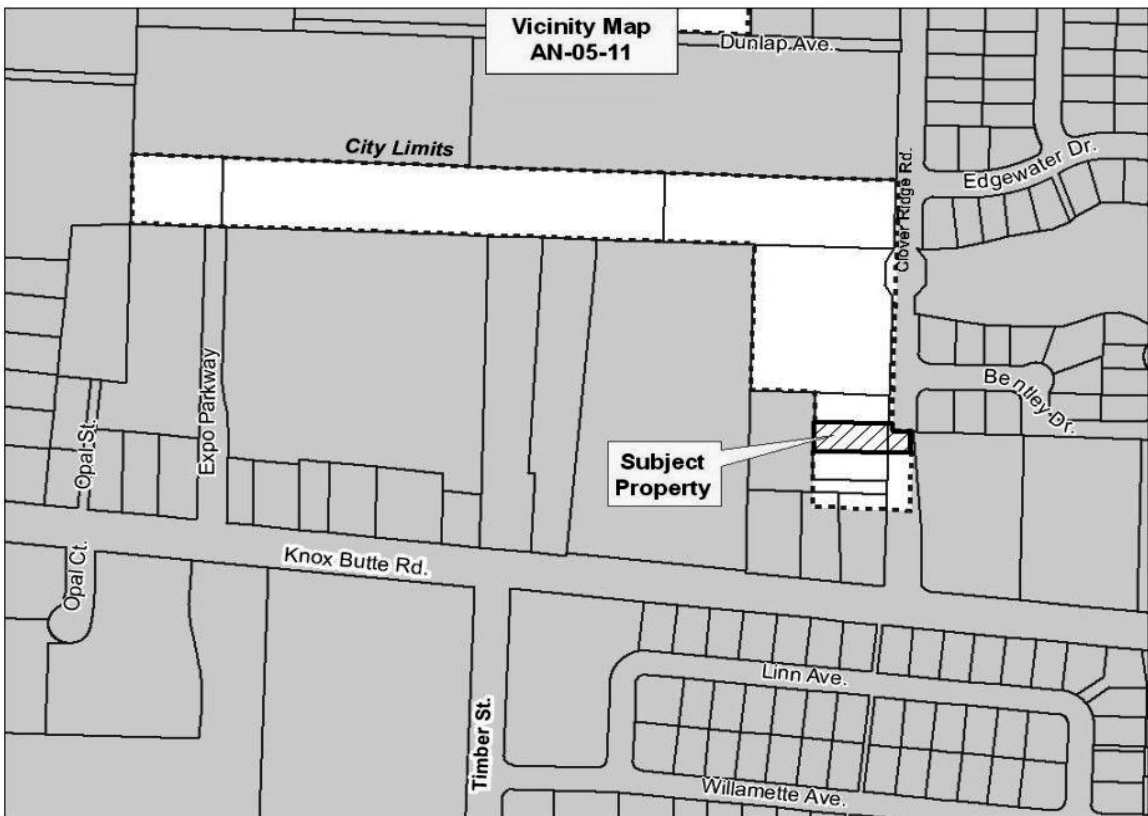
The property located at 120 Clover Ridge Road NE, shown on Linn County Assessor's Map No. 11S-03W-04AC; Tax Lot 2101, as further described in the legal description labeled Exhibit A and map labeled Exhibit B of the Albany Resolution No. 6077. The subject area (including right-of-way) contains approximately .25 acres.

### EXPLANATORY STATEMENT

**Annexation Proposal** - The Albany City Charter was amended in 1998 to require that annexation proposals be referred to Albany voters. Accordingly, the Albany City Council has referred to the Albany voters the question of annexation for 120 Clover Ridge Road NE. The total area of the parcel and right-of-way to be annexed is approximately .25 acres.

The property owner previously signed an Irrevocable Request to Annex document in order to be allowed to connect the parcel to city sewer and water. The parcel is developed with one single family house. The City is proposing a concurrent zoning map amendment that, if the annexation is approved, would zone the property RM (Residential - Medium Density).

*(Submitted by City of Albany)*





# CITY OF CORVALLIS

## MEASURE 02-78

### BALLOT TITLE

**Caption:** Proposed Annexation of the McFadden Site

**Question:** Shall the 88 acre McFadden Industrial Annexation site be annexed?

**Summary:** Approval of this measure would annex approximately 88 acres into the City of Corvallis, including 85.43 acres of private property and 2.57 acres of adjacent Highway 20 right-of-way. The site to be annexed is located west of Highway 20 and the Willamette River, south of Circle Boulevard, and north of Waterworks Avenue. The 85.43-acre McFadden site will be zoned PD(GI) (General Industrial with Planned Development and Willamette River Greenway Overlays), if the annexation is approved.

### EXPLANATORY STATEMENT

The 88-acres area proposed for annexation is located west of Highway 20 and the Willamette River, east of Highway 99W, south NE Circle Boulevard and north of downtown Corvallis. The area includes 2.57 acres of adjacent Highway 20 right-of-way and 85.43 acres of private land that contains two single family homes and a farm. The Comprehensive Plan Map designation for the property is General Industrial. If annexed, the property would be zoned PD(GI) (General Industrial with Planned Development and Willamette River Greenway Overlays). The proposed zoning is consistent with the Comprehensive Plan Map designation. Annexation requests are required to include a drawing to illustrate how the site could be developed. The applicant's drawing depicts the development of several buildings that could contain industrial uses permitted in the General Industrial zone. Because of the proposed Planned Development Overlay, any future development on the site

### EXPLANATORY STATEMENT - CONTINUED

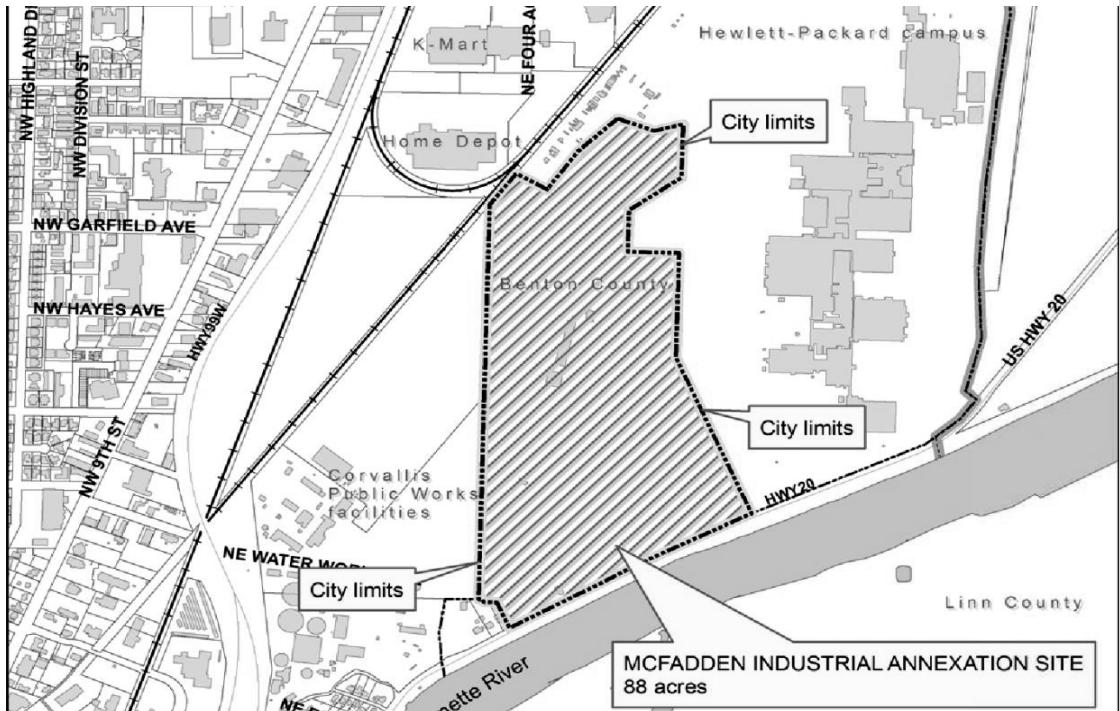
requires a public hearing and approval by the Corvallis Planning Commission. Any development on the property would have to be consistent with Land Development Code requirements regarding uses, setbacks, and other review criteria, unless modified through the Planned Development Process.

This project was analyzed for compatibility impacts and public service impacts, including potential traffic and utility impacts. Analysis found consistency with the City's compatibility criteria and the City's adopted Master Plans for items such as transportation, parks, trails, sewer, water, and storm drainage.

This land was identified for eventual annexation and development in 1980 when the urban growth boundary was adopted. This was reaffirmed with the acknowledgment of the City's 1998 Comprehensive Plan update. Water, sewer, and storm drainage services are available near the site, and are adequately sized to serve potential development on the site. Some additional public facility and service improvements would need to be constructed with future development of this site to satisfy Land Development Code Chapter 4.0 criteria. City ordinances specify that developers will be responsible for on-site and off-site costs associated with street and utility improvements needed for land development projects.

The City Council found the annexation request to be consistent with the policies of the Comprehensive Plan, Corvallis Land Development Code, and other City and State policies and standards. Citizens are encouraged to become informed about the annexation request. Full copies of the project's staff reports and Planning Commission and City Council hearing minutes are available at the Corvallis-Benton County Public Library (645 Monroe Avenue).

*(Submitted by the City of Corvallis)*



# CITY OF CORVALLIS

## MEASURE 02-78

## MEASURE 02-78

### ARGUMENT FOR:

#### Vote YES for Measure 02-78.

It's a sound and sensible annexation of industrial land, needed to create family-wage jobs for Corvallis.

Both the Corvallis Planning Commission and the City Council unanimously found this annexation complies with all applicable decision criteria; and that it is consistent with the Corvallis Comprehensive Plan, Land Development Code, and other City and State policies and standards.

With annexation, only Corvallis-compatible uses and standards will be allowed rather than County industrial uses and standards.

#### Vote YES for sound and sensible citizen input on future plans.

This annexation incorporates a Planned Development overlay like that on the adjacent HP campus. The McFadden site will require a full public hearing, open participation process, and approval by the Planning Commission before any development can take place.

#### Vote YES for sound and sensible environmental protection.

Over a third of the acreage in this property is natural riparian and wetland areas. Deed covenants and restrictions of the Planned Development Overlay take effect immediately upon annexation, to assure permanent preservation of these vital, open green spaces.

#### Vote YES for sound and sensible job growth opportunities.

The McFadden Industrial Site is a single, large parcel. It has direct access to all utilities. This land is right for the types of employers Corvallis wishes to attract. Annexation will give Corvallis greater opportunity for business growth that is planned and desirable, resulting in the family wage jobs Corvallis seeks.

#### Vote YES for the outstanding quality of life that's a hallmark of our community.

Annexation of this site implements Corvallis citizens' carefully drawn plans for our City. The location and nature of the site are suited for high quality industrial development, generating more property tax revenue to help pay for schools and the city services, facilities, and amenities we enjoy in Corvallis.

#### Vote YES for Measure 02-78.

Sound and sensible annexation of needed employment land for Corvallis.

*(This Information furnished by Matt Brandis)*

### ARGUMENT FOR:

I'm pleased the City Council unanimously voted to forward this Measure to you. I'm proud our proposal met or exceeded all City review criteria.

The McFadden family has been part of this community since the 1860s. Five generations have lived, worked and raised families here. We care for Corvallis. Annexing this property will benefit Corvallis now and for future generations.

*"My husband and I live next door to this land and I encourage a 'Yes' vote for annexation. It will be good for the community. The McFaddens have been good neighbors and good stewards of the land. I know they will continue to be. This property is virtually surrounded by Corvallis. It makes sense that it be part of the city."*

– Dona Gaver

Over a third of this property is wetland and riparian area. With annexation, we lock in strict protection of these natural resources in perpetuity.

*"The preservation of existing wetlands and riparian area is our first and best line of defense for protection of air and water quality, natural vegetation, and habitat. This annexation does just that."*

– Marvin Gilmour, Wetland Mitigation Specialist

Annexation will enact City standards and encourage private investment. It benefits Corvallis as a whole, creating family-wage job opportunities and enhancing the tax base to help fund education and other public services.

*"We've received many inquiries from clean technology employers seeking larger properties for their businesses. This property would have met the needs of several had it been in the city with city services. Annexation will contribute to our city's economic health, providing a desirable space for local businesses to grow, new businesses to locate, and creating jobs for the future."*

– Marcy Eastham, Executive Director, Corvallis Chamber of Commerce

Please vote YES on #02-78 to encourage quality jobs and increased revenue for public services, while protecting the environment. It's good for Corvallis. It's good for families. Our family wouldn't want it any other way.

## NO ARGUMENTS AGAINST THIS MEASURE WERE FILED

*(This information furnished by Arthur McFadden)*

The printing of this argument does not constitute an endorsement by Benton County, nor does the county warrant the accuracy or truth of any statement made in the argument.

The printing of this argument does not constitute an endorsement by Benton County, nor does the county warrant the accuracy or truth of any statement made in the argument.

**ALSEA HUMAN SERVICES SERVICE DISTRICT**

**MEASURE 02-77**

**BALLOT TITLE**

**Caption:** Formation of an Alsea Human Services Service District; Establish Permanent Tax Rate.

**Question:** Shall a Service District be formed with a permanent tax rate of \$0.84 per \$1,000 of assessed value beginning 2012-2013?

**Summary:** This measure would provide for the formation of a County Human Services Service District in the Alsea area. This district would primarily fund a health care clinic which is now operated independently as Alsea Rural Health Care, Inc. (Alsea Clinic). The permanent tax rate would be \$0.84 per \$1,000 of assessed value. This would generate approximately \$50,000 in the first year of operation. The Human Services Service District would have the same boundaries as those of Alsea School District 7J within Benton County. The 2010 combined property tax rate in Alsea for all county and local districts was \$10.55 per \$1,000. If this levy passes the combined rate would be \$11.39 per \$1,000. Other districts in the area will not be affected. The proposed tax rate may not be increased. The Human Services Service District may be dissolved by the Alsea electorate.

**EXPLANATORY STATEMENT**

The purpose of the proposed Alsea Human Services Service District is the formation of an entity to help facilitate the delivery of primary health care services in the rural Alsea area comprised of approximately 400 square miles and a population of approximately 1200.

For the past thirty years, the non-profit Alsea Clinic (Alsea Rural Health Care, Inc.) has provided primary health care services out of a facility located in the town of Alsea. Rising costs of health care have affected the stability of the clinic's funding. Job descriptions have expanded with mandated administrative requirements and more complex policies related to insurance billing and reimbursement.

The function of the proposed district would be to stabilize clinic funding by means of a proposed permanent tax rate. Revenues would be generated through an Alsea property tax rate of \$0.84 per \$1000 of assessed value, and the district would then contract health services to the Alsea Clinic. Each year, a District Budget Committee comprised of three Alsea Clinic Board Members and the three County Commissioners would review the clinic's budget and approve the part to be funded by tax dollars. (The committee's area of responsibility would include *only* that part of the Clinic's budget that would be funded by property taxes--between 25 and 30 percent).

Currently, the clinic's family nurse practitioner visits the K-12 school twice a week to provide health services. These services would continue under the proposed arrangement. The only other medical services available at this time in the extended Alsea area are those provided by an Emergency Medical Team (EMT). There is no duplication of services between the EMT's and the clinic, nor would there be under the proposed arrangement.

Other government services in the area include water treatment and sewage (for the actual town of Alsea only), a fire department, a cemetery, and a library. There would be no overlap of services with any of these districts, nor any financial impact upon existing services because of the proposed district.

If Alsea Clinic were to close, residents would have to drive a minimum of about 40 miles round trip and a maximum of about 90 miles (depending upon the location of their residences within the district) to the nearest primary care facility in Philomath. In addition, inclement weather poses significant potential hazards because of the roads and mountain pass near Mary's Peak.

If the measure passes, the approximately \$50,000 generated in the first year would provide between 25 and 30 percent of the clinic's annual budget requirements. Other sources of revenues in the past have included payment for subcontracted health services, fundraisers, donations, and grants; these income sources would continue to be important. The vast majority of revenues--about 81 percent--currently come from patient fees. These patient/user fees would continue to be the major source of clinic revenues under the arrangement proposed in the ballot measure.

*(Submitted by initiative approved by Benton County)*

**ALSEA HUMAN SERVICES SERVICE DISTRICT**

**MEASURE 02-77**

**MEASURE 02-77**

**ARGUMENT FOR:**

**ARGUMENT FOR:**

For 30 years, the Alsea Clinic has provided primary health care for our own community. We've operated "in the black" and have been able to maintain our independence. Our major source of revenue has been patient fees (81%), supplemented by income from subcontracted health services, fundraisers, donations, and grants. However, the rising costs of health care nationwide, including mandated administrative requirements, are making it impossible to continue as we have.

**Q. Why should I vote yes when I don't use the Alsea Clinic for my primary medical care?**  
**A. Twelve ways everyone benefits from having a clinic:**

Above all, we want to maintain the excellent quality of care our community has come to rely on. We want to avoid becoming part of a corporate health care entity or a government-affiliated clinic, along with the rigid policies and higher patient costs that usually accompany such associations.

1. A healthy community provides basic services through a school, a water and sewage system, a library, fire and police protection, and a clinic.
2. People are more likely to move into a community that has a clinic: young parents with children, retired people, working people with families, people working out of their homes for a company, self-employed people.
3. The clinic's presence helps stabilize property values because of the overall sense of a solid community. If residents ever need to sell their homes, it helps to be located in a community perceived in this way.
4. The clinic's longevity and excellent reputation throughout Oregon contribute to Alsea's positive reputation--everyone benefits!
5. Clinic projects contribute to community pride and achievement of worthy goals (Alsea's twice-yearly successful Blood Drives; distribution of Thanksgiving and Christmas boxes; Annual Raffle).
6. The nurse practitioner provides services at school twice a week: vaccinations; vision and dental screening; education about a variety of health issues; monitoring of student health; communication with staff.
7. The clinic provides sports physicals--less expensive and more convenient than elsewhere.
8. The practitioner writes for the *Valley Voice*: promotes awareness, prevention, wellness.
9. The clinic provides flu shots and vaccinations; saves time, expense, trips to town.
10. The practitioner can track outbreaks of illness and disease; can provide treatment, warnings, preventive strategies.
11. The clinic funds four part-time jobs: nurse practitioner, receptionist, medical assistant, billing clerk; altogether, 2.0 full-time equivalencies.
12. In emergency or disaster, the clinic would participate in Benton County's Emergency Response Plan. If Alsea were cut off from all outside contact, the presence of the clinic could make a difference beyond measure.

Our proposed solution, then, is local. After years of research and thoughtful deliberation, the Board of Directors hopes people will be willing to pay a property tax of \$0.84/\$1000 of assessed value. We believe the long-term financial viability of the clinic will be ensured if revenues can be stabilized by the income generated by the proposed tax.

We hope you will calculate how much the tax would cost you per month, and that you will find, on balance, that the amount is worth the many benefits to you, to your peace of mind, and to the community both now and in the future.

We are painfully aware that many people are struggling right now, and we don't want to increase anyone's burden. However, we believe that in the long run, everyone will benefit in important ways from having a strong, independent, viable clinic right here in Alsea.

And we pledge that if the clinic doesn't need all the tax revenue every year--which we'll evaluate closely--we'll lower the tax rate whenever we can.

Please join us: support Alsea Clinic by voting YES on 02-77.

- Joni Olsen (President, Alsea Clinic Board of Directors)
- Nancy Cooke (Board of Directors)
- Ryan Couture (Board of Directors)
- Bonnie Hill (Board of Directors)
- Ann Olsen (Board of Directors)
- Linda Parker (Board of Directors)
- Katie Sapp (Board of Directors)

Please vote yes on Measure 02-77.

**NO ARGUMENTS AGAINST THIS MEASURE WERE FILED**

*(This information furnished by Alsea Clinic Board of Directors)*

*(Information furnished by Alsea Clinic Board of Directors)*

The printing of this argument does not constitute an endorsement by Benton County, nor does the county warrant the accuracy or truth of any statement made in the argument.

The printing of this argument does not constitute an endorsement by Benton County, nor does the county warrant the accuracy or truth of any statement made in the argument.

# VOTER REGISTRATION, BALLOT INFORMATION & CONTACTS

## VOTER REGISTRATION AND BALLOT INFORMATION

**Who is qualified to vote:** In order to receive a ballot, voters must be registered to vote in their county of residence no later than 21 days prior to the election. However, if a registered voter moves within the State of Oregon, that voter can update his/her voter registration information and receive a ballot up until **8:00 PM on Election Day, which is May 15, 2012.**

**Absentee Ballots:** It is against the law to have anyone forward a ballot to you. Even the United States Postal Service will not forward a ballot. If you will be out of the area during the election period and would like to receive a ballot, contact our office and request that an "Absentee Ballot" be sent directly to you.

**If you lose your ballot or make a mistake while voting it:** If your ballot is lost, destroyed, damaged, or you made a mistake in marking your ballot, you may contact the Benton County Elections Office to request a replacement ballot. The replacement ballot will be mailed to you, as long as your request is received no later than the 5th day before Election Day. After the 5th day before the election, you may pick up a ballot by coming to the Benton County Elections Office.

If you have already mailed your original ballot before you realize you made a mistake, your ballot has been cast, and you are not eligible for a replacement ballot.

**In order for your ballot to be counted** it must be returned to any elections office or official ballot drop site in the State of Oregon, **no later than 8:00 PM Election Day, May 15, 2012.**

### Postmarks DO NOT count!

Ballots must be returned enclosed in the official ballot return envelope and **signed by the voter** in order to be counted. Even people with Power of Attorney do not have authority to sign another person's ballot.

Use a **PEN OR PENCIL** to vote your ballot.

If you have other questions about voter registration, your ballot, or voting in Benton County you are encouraged to call 541 766-6756.

## CONTACT INFORMATION

### Benton County Elections Website

The website is an excellent source of information concerning voter registration, absentee voting, frequently asked questions, and links to other local, state, and federal election officials. You will also find election specific information such as election filings, results, voter turnout and this voters' pamphlet on our website [www.co.benton.or.us/admin/elections](http://www.co.benton.or.us/admin/elections).

### Voters with Disabilities

If you need help voting because of a disability, contact the Benton County Elections Office. Deputized elections staff is available to assist you in casting a ballot; or ask about alternate voting formats.

### Benton County Elections Office

Phone: 541 766-6756  
 TTY: 541 766-6080  
 Fax: 541 766-6757  
 Website: [www.co.benton.or.us/admin/elections](http://www.co.benton.or.us/admin/elections)  
 Email: [bcelections@co.benton.or.us](mailto:bcelections@co.benton.or.us)

### State of Oregon

Phone: 1 866 673-8683  
 Website: [www.oregonvotes.org](http://www.oregonvotes.org)

### Información en Español

Para mas información sobre las elecciones en el condado de Benton

llame al: 541 766-6756  
 TTY: 541 766-6080  
 limitaciones auditivas  
 o al numero gratis: 1 866 673-8683

Condado: [www.co.benton.or.us/admin/elections](http://www.co.benton.or.us/admin/elections)  
 Estado: [www.oregonvotes.org](http://www.oregonvotes.org)

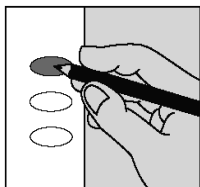
Se Habla Español

# CHECK YOUR BALLOT AND FREQUENTLY ASKED QUESTIONS

## HOW TO CAST YOUR BALLOT

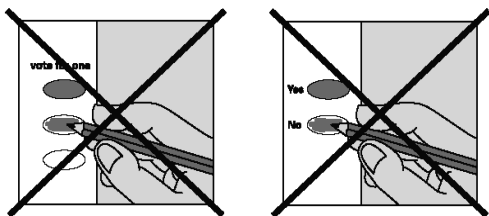
### check your ballot!

Use a pen or pencil to fill in the ovals next to your choices.



If you vote for more candidates than allowed, or if you vote **both** Yes **and** No on a measure, it is called an overvote.

Your vote **will not count** for that candidate or measure.



You do not have to vote on all contests. Those you do vote on will still count.

Contact Benton County Elections to request a replacement ballot if:

- you make a mistake
- your ballot is damaged or spoiled
- you lose your ballot

### Benton County Elections

Phone: (541) 766-6756  
 Fax: (541) 766-6757  
 TTY: (541) 766-6080  
 Email: [bcelections@co.benton.or.us](mailto:bcelections@co.benton.or.us)

1 866 ORE VOTE/673 8683  
 Se Habla Español  
[www.oregonvotes.org](http://www.oregonvotes.org)

rev 9/04

## FREQUENTLY ASKED QUESTIONS

### How can I find out if my ballot has been accepted?

Call our office at 541 766-6756 or check the website: [www.oregonvotes.org](http://www.oregonvotes.org)

### What do I do when a ballot for someone else is delivered to my home?

It is important that you **DO NOT THROW THE BALLOT AWAY**. Write on the envelope that the person is no longer at that address and **PUT IT BACK INTO THE MAIL**. Postage is not needed. Once our office has received the undeliverable ballot you will stop receiving them.

### I forgot to put my ballot in the secrecy envelope. Will you count my ballot?

Yes. We recommend that voters use the secrecy envelope. You can open the ballot return envelope, place your ballot in the secrecy envelope and reseal it. Write "Opened By Voter" along the portion that you opened and sign your full name there as well. That way we will know that the voter was the one who opened the ballot and can count it. However, if your ballot comes back without a secrecy envelope, it will still be counted.

### How do you know I am the one who voted my ballot?

The signature on EACH ballot return envelope is verified. Elections staff compares the signature on your ballot return envelope with the signature on your Voter Registration Card. If the signatures do not match we will contact you to help us resolve the issue.

**Remember:** Even a person with a Power of Attorney cannot sign your ballot. Only you can.

### When do election results become available and how can I find out what they are?

Election results are available on the Benton County Elections website at: [www.co.benton.or.us/admin/elections](http://www.co.benton.or.us/admin/elections). First results become available between 8:20 PM and 9:00 PM on Election Night. Further results will be added as ballots are received and tallied. All ballots cast within Benton County will be counted and the results posted before the election staff leaves Election Night. However, the election cannot be certified until ballots returned in other counties have been sent to Benton County for later tally, and voters with challenged ballots have had an opportunity to respond to those challenges.

### DON'T FORGET TO SIGN YOUR BALLOT

**YOUR BALLOT MUST BE RETURNED NO LATER THAN 8 PM ON ELECTION NIGHT IN ORDER TO BE COUNTED. POSTMARKS DO NOT COUNT**

THIS PAGE INTENTIONALLY LEFT BLANK

**Benton County**  
**VOTERS' PAMPHLET**  
**Primary Election**  
**MAY 15, 2012**

Elections Office Open 7:00 AM to 8:00 PM Election Day

PUBLISHED BY  
THE BENTON COUNTY CLERK  
AT THE DIRECTION OF THE BOARD OF COMMISSIONERS



Election Questions?  
Benton County Elections Office  
Phone: 541 766-6756  
TTY: 541 766-6080  
Fax: 541 766-6757

Website: [www.co.benton.or.us/admin/elections](http://www.co.benton.or.us/admin/elections)  
Email: [bcelections@co.benton.or.us](mailto:bcelections@co.benton.or.us)