

BENTON COUNTY VOTERS' PAMPHLET



GENERAL ELECTION NOVEMBER 6, 2012

This begins the Benton County insert in the State Voters' Pamphlet. The county insert can be identified by the grey bar on the outside edge of each page.

Published by the County Clerk at the direction of
the Benton County Board of Commissioners.



BOARD OF COMMISSIONERS

205 NW 5th Street
P.O. Box 3020
Corvallis, OR 97339-3020
(541) 766-6800
FAX (541) 766-6893
www.co.benton.or.us

Dear Fellow Benton County Voter:

Tuesday, November 6, 2012, is General Election day in the United States. As a registered voter, you will have an opportunity to cast a ballot on a variety of federal, state, county and city contests and measures. The contests and measures on your ballot are dependent on the districts in which you reside within Benton County.

The Board of Commissioners directed the County Clerk to publish this **Benton County Voters' Pamphlet** to provide voters with information concerning their local choices for this election. This pamphlet will be made available on the election website at www.co.benton.or.us/elections, hard copies can be found in the County Elections Office and as an insert within State Voters' Pamphlets delivered to each Benton County household.

Please note: All ballots must be received no later than 8:00 p.m. on Tuesday, November 6, 2012. You can mail your ballot or drop it at one of the ballot drop box locations listed in this pamphlet on the next page and on the election website.

Included with your ballot, you will find information about obtaining a replacement ballot, if needed, and instruction for casting your ballot. We hope this information will help you become better informed about the issues in this election as you prepare to make your decisions.

If you need additional information or assistance, you may reach the Elections Office by telephone: (541) 766-6756; email: bcelections@co.benton.or.us, or by visiting the Elections Office located in the basement of the historic Benton County Courthouse, 120 NW 4th Street, Room 13, in Corvallis.

Sincerely,



Commissioner



Commissioner



Commissioner

VOTE

TABLE OF CONTENTS AND OFFICIAL BALLOT DROPSITES	
TABLE OF CONTENTS	BALLOT DROPSITES
Letter from the Board of Commissioners	2
Table of Contents	3
Official Benton County Ballot Dropsites	3
-----CANDIDATES-----	
<u>Commissioner, Position 2</u>	
Jay Dixon, Democrat	4
Jerry J. Jackson, Sr., Rep. & Ind.	4
Timothy L. Dehne, Pacific Green	5
<u>Commissioner, Position 3</u>	
Annabelle Jaramillo, Dem. & Ind.	6
Betsy L. Close, Republican	6
-----CITY COUNCIL RACES-----	
Adair Village	7-8
Albany	9
Corvallis	10-15
Philomath	16-18
-----MEASURES-----	
<u>Benton County</u>	
02-79 Safety and Health Renewal	19
Arguments	20-24
<u>City of Corvallis</u>	
02-80 Sather Annexation	25
Arguments	26-27
02-81 Artificial Entities	28
Arguments	29

How to Cast Your Ballot	30
Frequently Asked Questions	30
Registration & Ballot Information	31
Contacts & Websites	31

*All ballot dropsites open until 8 PM Election Day
 Directions to dropsites can be found on our website at www.co.benton.or.us/elections

BENTON COUNTY ELECTIONS OFFICE
 Courthouse - 120 NW 4th St - Corvallis
 Basement - Room 13
 Mon thru Fri 8 AM to 5 PM*
 (541) 766-6756

County Courthouse 24-hour dropboxes:
 Front walk of courthouse near front steps
 Handicap entrance on 5th Street side
 Across the street at 180 NW 5th Street

CORVALLIS - LINCOLN HEALTH CENTER
 121 SE Viewmont Ave - Corvallis
 24-hour drive through in parking lot

CORVALLIS - TIMBERHILL - WELLS FARGO BANK
 2543 NW Kings Blvd - Timberhill Shopping Center
 24-hour drive through

CORVALLIS - PUBLIC LIBRARY
 645 NW Monroe Ave - Corvallis
 Mon thru Thu 10 AM to 8 PM
 Fri & Sat 10 AM to 6 PM

CORVALLIS - OSU VALLEY LIBRARY
 OSU Campus
 Mon thru Thu 7:30 AM to Midnight
 Fri 7:30 AM to 10 PM
 Sat 10 AM to 10 PM
 Sun 10 AM to Midnight

CORVALLIS - LBCC BENTON CENTER
 757 NW Polk Ave - Corvallis
 Mon thru Thu 8 AM to 9 PM
 Fri 8 AM to 4 PM

CORVALLIS - CHINTIMINI SENIOR CENTER
 2601 NW Tyler Ave - Corvallis
 Mon thru Fri 8 AM to 4 PM*

CORVALLIS - CITY LIMITS MARKET
 5800 NW Highway 99W - north of Corvallis
 Mon thru Fri 6:30 AM to 8 PM
 Sat & Sun 8 AM to 8 PM

ALBANY - RAY'S FOOD PLACE
 621 Hickory Ave - North Albany Shopping Center
 24-hour outdoor - near main entrance

ALSEA - JOHN BOY'S MERCANTILE STORE
 186 E Main St - Alsea
 Mon thru Sat 6 AM to 8 PM
 Sun 7 AM to 8 PM

MONROE - CITY HALL
 664 Commercial St - Monroe
 Mon thru Fri 8 AM to 5 PM*

PHILOMATH - PUBLIC LIBRARY
 1050 Applegate St - Philomath
 Mon, Thu, Fri, & Sat 10 AM to 5 PM*
 Tue & Wed 10 AM to 8 PM

BENTON COUNTY

Commissioner, Position 2



**JAY
DIXON**
DEMOCRAT

Occupation: Chair, Board of Commissioners
Occupational Background: Small Business Owner; Financial Executive; Criminal Justice Center Director; Seattle Police Lieutenant
Educational Background: BS, University of San Francisco; Pacific Program, University of Oregon
Prior Governmental Experience: Chair: Corvallis Budget Commission, Cascades West Council of Governments Board, Willamette Criminal Justice Council. Linn-Benton Housing Authority Commissioner; Corvallis School Board member.

**Re-elect Commissioner Jay Dixon
Performance Counts. Experience Matters.**

Here's a portion of my record in areas where I seek to do more for a safer, sounder county. I am honored to serve you and welcome your vote to continue.

Economy. Serve on Corvallis Economic Development Commission. Promoted "buy local" policy. Former Chamber of Commerce president.

Public Safety. Chair Oregon's Juvenile Crime Prevention Advisory Committee. Serve on Oregon Community Corrections Commission. Support our drug treatment court.

Health Care. Helped secure Benton County's #1 rank among Oregon counties in healthy living; secured federal funds to provide low-cost health care to county residents and open clinics in Monroe and Corvallis; supported community health district in Alsea.

Education. Serve on OSU/Corvallis Collaboration Steering Committee; supported Corvallis and Philomath outdoor schools and Kids Day for Conservation; served on 509J School Board.

Housing. Supported Linn-Benton Housing Authority, Willamette Neighborhood Housing and Habitat for Humanity efforts to provide affordable housing. Co-chair 10-Year Plan to End Homelessness in Benton County.

Environment. Opened Fort Hoskins Historical Park, Beazell Memorial Forest and Fitton Green Natural Area, adding 1,000 acres of open space to Benton County.

We urge you to re-elect Commissioner Jay Dixon. Experience and performance make him the right candidate: Senator Ron Wyden, Senator Jeff Merkley, Governor John Kitzhaber, Congressman Peter DeFazio, Congressman Kurt Schrader, Representative Sara Gelser, District Attorney John Haroldson, Sheriff Diana Simpson, Commissioner Annabelle Jaramillo; Commissioner Linda Modrell, Corvallis Mayor Julie Manning, Albany Mayor Sharon Konopa, Anne Schuster, Corvallis School Board, Linn-Benton-Lincoln Central Labor Council, AFSCME Local 2064, Sierra Club, Basic Rights Oregon PAC (Green Light).

For more www.jaydixon.net

(This information furnished by Dixon for Commissioner)

The printing of this statement does not constitute an endorsement by Benton County, nor does the county warrant the accuracy or truth of any statement made.

Commissioner, Position 2



**JERRY J.
JACKSON, SR.**
**REPUBLICAN &
INDEPENDENT**

Occupation: Oregon Licensed Investigator; Code Enforcement Officer, Polk County
Occupational Background: Polk County Community Development Manager; Community Service/Work Release Coordinator; Business Owner; School Board Member, St. Mary's School; US Army Veteran and Past Member of *The Old Guard*

Educational Background: Studied Political Science, Oregon State University; Associates Degree Linn-Benton Community College; Certificate from Trend College in Travel & Tourism Management; The Ford Family Foundation, Ford Institute Leadership Program ASFPM Certified Floodplain Manager

Prior Governmental Experience: Current Chair, City of Philomath Budget Committee, Past Polk County Community Development Manager; Philomath City Council President; Budget/Finance/Administration Board and Ordinance Committees/Philomath Budget & Police Committee

ACCOMPLISHMENTS: Having experience working at Polk County brought firsthand knowledge with all levels of the county. The City of Philomath has greatly benefited from Jerry being part of their team both as a citizen and a council member. Jerry has spent his life volunteering in his community both in government and community service. He offers Benton County voters a spirit of transparency and accountability to its citizens. Jerry has worked with the Bureau of Land Management to start programs like Dump Stoppers and Noxious Weed Programs; Jerry has been given the honor of "Knight of the Year" three times since 2002 by the Corvallis Knights of Columbus.

RESTORE FISCAL RESPONSIBILITY: Bring spending under control; Create and restore funding sources; Make accountability the first rule of the Commission; carefully consider the needs of Benton County's citizens

GIVE PUBLIC SAFETY PRIORITY: Work to provide the Sheriff's Department necessary facilities and equipment needed to protect the citizens of Benton County

IMPROVE BENTON COUNTY'S ROADS: Improve roads to guarantee citizens safe and efficient transportation; Maintain existing roads now to save \$Millions later

ENDORSEMENTS

Oregon Small Business Association
Taxpayers Association of Oregon
Oregon Right to Life

"I am here to represent the concerns of Benton County's citizens above the concerns of special interests and partisan politics and to foster cooperation between county government, cities and rural areas."

*(This information furnished by
Committee to Elect Jackson for Commissioner)*

The printing of this statement does not constitute an endorsement by Benton County, nor does the county warrant the accuracy or truth of any statement made.

BENTON COUNTY

Commissioner, Position 2



**TIMOTHY L.
DEHNE**
PACIFIC GREEN

Occupation: Landscaper

Occupational Background: Self-employed landscaper since 2007; have worked as Wastewater Operator; Water Lab Tech; Certified Nursing Assistant; Medical Receptionist; X-Ray Tech aide; Commercial Driver; Cook; Bike mechanic

Educational Background: 2003-graduate of Linn-Benton Community College, Water/Wastewater Technology; Attended OSU, Health Care Administration; Linn-Benton Community College, Liberal Arts ; Spartan School of Aeronautics, Air Frame & Power Plant Mechanics; Univ. of Maryland, Political Science; Northern Virginia Community College, Air Traffic Control

Prior Governmental Experience: (2005-2008) Director, Benton Soil & Water Conservation District

I am running for this position to serve the Sovereign citizens of Benton County. I feel blessed to be living in a beautiful, bountiful part of the world. I believe that by working together we can secure for ourselves a sustainable, peaceful and prosperous future.

Water is the basis of life: Together we can secure a clean, safe and adequate supply for ourselves, the food we grow, the animals we raise and all sentient creatures. We can all take a role in the stewardship of our natural resources. As commissioner I will support a Food Bill of Rights and Seed Heritage being brought forth by the Benton County Community Rights Coalition.

Your health is your wealth if you are wise. As commissioner I will be in support of Single Payer Health Care for all Oregonians.

Hemp is legal in Oregon. Hemp is a product that can be used for food, textiles, fuel, building products. Growing hemp can provide a multitude of jobs and help create new industry. As commissioner I will encourage farmers to plant hemp and entrepreneurs to create processing facilities. Pressure can be applied to the Federal Government by the sovereign citizens of the United States to remove prohibitions on growing Hemp. We must stop living in fear of our own government and insist it serve the people. Instant Runoff Voting is allowed in the Oregon Constitution. Let Benton County lead the way.

(This information furnished by Timothy L. Dehne)

The printing of this statement does not constitute an endorsement by Benton County, nor does the county warrant the accuracy or truth of any statement made.

BENTON COUNTY

Commissioner, Position 3



**ANNABELLE
JARAMILLO**

**DEMOCRAT &
INDEPENDENT**

Occupation: Benton County Commissioner

Occupational Background: Citizens' Representative for Governor Kitzhaber, research botanist; civil rights advocate; teacher

Educational Background: B.S., M.S. – Biology, Portland State University

Prior Governmental Experience: Thirty-seven years - local, state and federal service. Association of Oregon Counties Board, Legislative Committee, Public Lands and Energy/ Environment Subcommittees; Council of Forest Trust Land Counties; Governor's Law Enforcement Contact Committee; Equality Task Force; Judicial Fitness and Disabilities Commission; Bureau of Land Management Resource Advisory Committee; Coast Range Province Advisory Committee; Pacific Northwest Research Station

Community Service: Community Services Consortium; American Leadership Forum; American Civil Liberties Union; Economic Vitality Partnership **Family:** Richard Medley, spouse; three children, eight grandchildren

Re-Elect Annabelle Jaramillo

"I am committed to providing leadership and good stewardship for Benton County. My colleagues and I have worked to create a government that supports our communities. Through federally funded health centers we provide for those in need. We foster natural areas and conserve habitats with willing landowners. Fiscal challenges are met with diligence and creativity. We invest in economic prosperity through partnerships with others.

"I want to continue this work!" We live in challenging times, when community needs are at an all-time high. I am committed to Benton County where we and future generations can experience rich and rewarding lives."

Annabelle Jaramillo

"Annabelle Jaramillo has always been there for the state of Oregon and for Benton County. She knows how to solve problems. That's what Benton County needs - problem solvers." – *Governor John A. Kitzhaber*

Supporters:

US Senator, Ron Wyden	District Attorney, John Haroldson
US Senator, Jeff Merkley	Corvallis Mayor, Julie Manning
Congressman, Peter DeFazio	Albany Mayor, Sharon Konopa
Congressman, Kurt Schrader	Ann Schuster, 509J Board
Representative, Sara Gelser	Basic Rights Oregon PAC
Commissioner, Jay Dixon	Linn Benton Lincoln –
Commissioner, Linda Modrell	Central Labor Council
Sheriff, Diana Simpson	AFSCME Local 6024
	Sierra Club and more . . .

Re-Elect Annabelle Jaramillo
www.jaramillo2012.com

(This information furnished by Jaramillo for Commissioner)

The printing of this statement does not constitute an endorsement by Benton County, nor does the county warrant the accuracy or truth of any statement made.

Commissioner, Position 3



**BETSY
CLOSE**

REPUBLICAN

Occupation: Former Oregon State Representative

Occupational Background: Oregon State Representative; Public School Teacher: Washington and Oregon; Job Developer for Benton County; Graduate Teaching Assistant at Oregon State University; Bank teller

Educational Background: Oregon State University, MS; Central Washington Univ., BA Education; Washington State University, BA

Prior Governmental Experience: Oregon House of Representatives, three terms; Chair, Business Labor, and Consumer Affairs Committee; Chair: Water and Environment Committee; Co-Chair, Natural Resources; Education Ways and Means Subcommittee; Revenue Committee; Vice-Chair, Human Resources Committee; Rules and Elections Committee; Oregon Commission for Women; Oregon Coin Commission; Tax Reform Task Force; Palestine Rural Fire Board; Albany School Committee, Precinct Committee Woman

PERSONAL: Married 40 years, 4 grown children, 36 year resident of Benton County

Betsy Close has vital legislative experience. She will take strong stands to improve and strengthen Benton County:

- We CAN manage county money carefully, prioritizing services without raising taxes.
- We CAN make sure our county is safe by fully funding our Sheriff and our courts.
- We CAN maintain our investment in Benton County roads by creating a Rainy-Day Fund, similar to Linn County's.
- We CAN bring fairness and reason to land use decisions, treating applicants justly.
- We CAN streamline our county permitting process to attract family-wage jobs.

BETSY CLOSE IS ENDORSED BY: Andy Olson, Oregon State Representative John K. Lindsey, Linn County Commissioner T J Reilly, Oregon Small Business Association PAC

ELECT BETSY CLOSE:
A RECORD OF SUCCESSFULLY SERVING
THE RESIDENTS OF BENTON COUNTY

*(This information furnished by
Betsy Close/Close Friends PAC)*

The printing of this statement does not constitute an endorsement by Benton County, nor does the county warrant the accuracy or truth of any statement made.

CITY OF ADAIR VILLAGE

MAYOR



BILL CURRIER

Occupation: Business Owner; Computer Networking Consultant

Occupational Background: Police Officer

Educational Background: Southern Oregon University, Computer Information Systems; Pacific Union College, Business

Prior Governmental Experience: Adair Village Mayor; Adair Village Public Safety Commission; Willamette Criminal Justice Council; Corvallis Area Metropolitan Planning Organization; Cascades West Area Commission on Transportation; League of Oregon Cities Board of Directors

RE-ELECT BILL CURRIER FOR CONTINUED PROGRESS

Adair Village has come a long way in recent years. Thanks to your support and input we have achieved many of our goals. The most notable is that we have lowered our costs to run the City while continuing to improve service levels.

Because of the leadership of our new City Administration and the amazing accomplishments of our very capable and committed public works staff we have greater confidence in our aging water and wastewater infrastructure.

The bottom line is that you, as a resident, should be able to count on your city government to provide essential public utilities and public safety services. It has been an honor to serve as your Mayor and help bring about this certainty.

With your vote I will continue to lead the City, working on and with the all-volunteer City Council to make the tough choices that are necessary to ensure that Adair Village continues to be a great place to live and raise a family.

Current Top Priorities

- Community oriented growth
- Water infrastructure challenges
- Improved public safety services
- Enhanced local amenities

www.CurrierForMayor.com

STRONG & EFFECTIVE LEADERSHIP

(This information furnished by Bill Currier)

The printing of this statement does not constitute an endorsement by Benton County, nor does the county warrant the accuracy or truth of any statement made.

CITY OF ADAIR VILLAGE

CITY COUNCIL



**CURT
HUBELE**

Occupation: Echocardiographer (Cardiac Ultrasound), Good Samaritan Hospital, Corvallis OR

Occupational Background: Executive Director, YMCA Camp Shady Brook, Deckers CO; Camp Director, Lake Wenatchee YMCA Camp, Wenatchee WA; Mentor Coordinator, Moscow School District, Moscow ID

Educational Background: Spokane Community College, A.A.S.-Echocardiography; University of Idaho, B.S. Ed.-Secondary Education Social Sciences

Prior Governmental Experience: Current Member, Adair Village Planning Commission

It would be my honor to serve you as your representative on the Adair Village City Council. I currently serve on the Adair Village Planning Commission and also have attended most of the council meetings over the past couple of years. Those experiences have convinced me that while we have quality city leadership that desires to maintain a good quality of life for our residents, there are areas where the city needs to continue to improve.

Communication: Development of more effective and efficient methods of communicating with and receiving feedback from our residents through improvements to the city website, email lists, and improvements to the city's monthly newsletter.

Neighborhood Quality: Balanced code enforcement ensures preservation of property values, public safety, and high quality of life for our residents, without burdening our residents with unnecessary or excessively restrictive enforcement. Fair, consistent enforcement is not complaint-driven, where favoritism can come into play; rather most concerns are easily observable to enforcement staff driving down the street. Let's communicate the codes to educate residents, expect the best of each other, and enforce with citations only when all other options are exhausted.

Financial Responsibility: Small, local, limited government requires careful management of resources to maximize the value of every tax dollar residents pay. We must carefully prioritize projects to provide the most benefit at the least cost. We need to work harder to maintain quality street maintenance, public parks, code enforcement and safety, while working to reach more affordable water and wastewater rates.

Thank you for voting for **Curt Hubele** for Adair Village City Council.

(This information furnished by Curt Hubele)

The printing of this statement does not constitute an endorsement by Benton County, nor does the county warrant the accuracy or truth of any statement made.

CITY COUNCIL



**NICOLE
REAL**

Occupation: Assistant Director Business Services Oregon State University

Occupational Background: Senior Auditor, Secretary of State; Accounts Receivable Clerk, ATS Oregon; Bookkeeper, Pro Lam, Inc.; Assistant to Overseas Vice President, Andrews Federal Credit Union, Assistant Manager, Bi-Mart Corp.

Educational Background: Oregon State University: BS in Business Admin with an option in Accounting; Linn-Benton Community College: AS; Certified Public Accountant; Certified Fraud Examiner

Prior Governmental Experience: Member of the Adair Village Budget and Finance Committees

I have been a resident of Adair Village since 2004. Over the past several years, I have been involved with the budget committee and am one of the original members of the finance committee which was established to oversee the financial activity of the city. As a CPA and Fraud Examiner, my main focus will be on fiscal accountability. I have the necessary experience, obtained during my education and my auditing career, to know how to implement good internal controls ensuring the city is utilizing resources in an appropriate manner. I believe it is the responsibility of the City Council to be good stewards of city resources and to ensure that the city residents' best interests are at the core of each and every decision made.

Adair Village has some exciting opportunities ahead and I am anxious to be a part of the team that leads and implements these changes. During a time of economic turmoil, it's of great importance to make certain that those in charge of running the city understand the significance that good internal controls play. As a wife, mother and concerned citizen I understand the struggles that we all face and if elected, I promise to keep common sense and community interests at the forefront of all decisions.

(This information furnished by Nicole Real)

The printing of this statement does not constitute an endorsement by Benton County, nor does the county warrant the accuracy or truth of any statement made.

CITY OF ALBANY

MAYOR



SHARON KONOPA

Occupation: Mayor of Albany

Occupational Background: Event coordinator; small business owner

Educational Background: South Albany High School diploma

Prior Governmental Experience:

- ◆ Mayor of Albany; January 2009-present
- ◆ Albany City Councilor; January 1997-Dec. 2008
- ◆ Oregon Passenger Rail Leadership Council; appointed by the Governor, 2011-present
- ◆ Willamette Criminal Justice Council; board member
- ◆ Central Albany Revitalization Board and Agency; 2001-present and former Chair of Agency
- ◆ Cascade West Council of Governments; serving Senior/Disability Services, Meals on Wheels, Loan Program Advisory Committee—14 year board member and executive committee
- ◆ Mayor's Business Ready Task Force; present
- ◆ Transient Lodging Tax Advisory Committee; 2011-present
- ◆ Linn County Ten-Year Homeless Plan; Past Committee Co-chair, current update committee
- ◆ Numerous current and previous committees/task forces

Government-Partnered Organizations:

- ◆ Albany Millersburg Economic Development Corporation; board member
- ◆ Albany Downtown Association; liaison board member
- ◆ Albany Partnership for Housing and Community Development; board member and executive committee

Sharon Konopa was jointly responsible in bringing in 20 million dollars to Albany, the most discretionary funds the City has ever received during one of our nation's worst economic downturns. She also helped to bring in millions of federal dollars for infrastructure, which support existing businesses and local jobs.

Currently Sharon Konopa is Mayor of Albany and is a full time community volunteer. She has devoted for many years her time and energies for the citizens of Albany.

Have you ever noticed that most political candidates run their campaign on promises, and seem to say about the same thing? Sharon Konopa is not your usual candidate. She runs her campaign on what she has accomplished, and she has a 16 year record to prove it.

Learn more about her experience and accomplishments at:
www.sharonkonopa.org

(This information furnished by Albany Friends of Sharon Konopa)

The printing of this statement does not constitute an endorsement by Benton County, nor does the county warrant the accuracy or truth of any statement made.

CITY OF CORVALLIS

CITY COUNCIL, WARD 2



**ROEN
HOGG**

Occupation: Project Manager, Oregon Employment Department

Occupational Background: Software Release Manager, Hewlett Packard; System Analyst, Oregon State University

Educational Background: M.S., Montana State University; B.A., Bates College

Prior Governmental Experience:

- Corvallis City Council, 2010-2012
- Urban Services Committee, 2010-2012
- Budget Commission, 2010-2012.
- OSU-City Collaboration Steering Committee, 2011-2012

Liaison to:

- Planning Commission,
- Historic Resource Commission,
- Downtown Commission,
- Downtown Parking Committee,
- Madison Avenue Task Force.

Focus on:

Neighborhood Livability. Homeowners, renters and students deserve a vibrant, attractive place to live, work and do business. Tackle noise, parking and traffic issues. Support community gardening, city parks and historic neighborhoods.

Community Values. Support community organizations, nonprofits, arts, culture, schools, diversity, sustainability and OSU-City collaboration.

Economic Vitality. Small business is vital for creating new jobs. Facilitate new businesses, grow existing businesses and recruit new companies. Participated in Business Boot Camp hosted by Corvallis-Benton Chamber Coalition.

Longtime Corvallis resident. Support Corvallis Homeless Shelter Coalition and Basic Rights Oregon. Member First Alternative Co-op. Founding member Whiteside Theatre Foundation. Involved with Neighborhood Empowerment Grant to start community gardening at Peanut Park. Strongly support our local neighborhood associations which are vital for improving the livability of our historic neighborhoods.

I am running for re-election to protect and enhance our neighborhoods and our city. I will appreciate the opportunity to continue to represent you on the Corvallis City Council.

(This information furnished by Roen Hogg)

The printing of this statement does not constitute an endorsement by Benton County, nor does the county warrant the accuracy or truth of any statement made.

CITY COUNCIL, WARD 3

*No Photo
Submitted*

**RICHARD
HERVEY**

Occupation: Retired

Occupational Background: Environmental Engineer CH2M Hill; Process/Design Engineer, Virginia Power, Peace Corps

Educational Background: BS Chemical Engineering, Texas Tech University

Prior Governmental Experience: 2009 - present, Corvallis City Councilor, Urban Services Committee, Committee for Citizen Involvement, Budget, Capital Improvement Project, Corvallis Watershed Advisory Commissions and liaison to WNHS

Accomplishments: Established a council goal creating more community gardens and a reduction in City interference with growing and selling food to each other. Worked with staff and Council to create a balanced budget which protected as many City services as possible. Mentored citizen activists on how best to approach the City in their eventually successful efforts.

Dear Neighbor,

I ask for your reelection vote and your continuing efforts in making our neighborhoods and community wonderful places to live. I seek the opportunity to use my ever increasing knowledge of how our City government functions to do the following:

"No Them": I will continue to advocate for what, with your input, I understand to be in the best interest of South Corvallis. Additionally, I will work to maintain a productive environment in city government where citizens express varied points of view and work together to find effective solutions.

Economic Development: I will continue to work to include growing, processing and selling food locally as a key part of our economic development efforts. I will work to provide opportunities for citizens to invest their savings in local enterprises.

City Budget: I will continue to work to retain a city budget that maintains a balance of City services in the face of structural financial problems that create ever lower property tax income.

Sustainability and Community: In these are hard times, I will work to maintain our City's focus on living sustainably. Our grandparents might have called it living frugally. I will build on South Corvallis' demonstrated leadership in building Community to unite neighborhoods throughout Corvallis. Hard times are easier when we know and care for our neighbors.

(This information furnished by Richard Hervey)

The printing of this statement does not constitute an endorsement by Benton County, nor does the county warrant the accuracy or truth of any statement made.

CITY OF CORVALLIS

CITY COUNCIL, WARD 4



**DAN
BROWN**

Occupation: Retired College Professor

Occupational Background: 25 years at OSU plus other domestic and international appointments

Educational Background: Ph.D. University of Iowa

Prior Governmental Experience: Corvallis City Council (elected) 2007-2012

The City government is facing difficult challenges. We must focus our limited resources on the highest priority local issues. In doing so, we must maintain the support of Corvallis citizens.

The City must continue to forge balanced budgets, rebuild reserves, and provide for the City's foreseeable financial needs in the future.

The City should hasten to complete the tasks and plans it has begun in collaboration with OSU.

The City should expand economic development efforts in order to create more local family-wage jobs and generate increased property tax revenue to support City services.

(This information furnished by Dan Brown)

The printing of this statement does not constitute an endorsement by Benton County, nor does the county warrant the accuracy or truth of any statement made.

CITY OF CORVALLIS

CITY COUNCIL, WARD 5



**MIKE
BEILSTEIN**

Occupation: Chemist, retired

Occupational Background:

1978 to 2007, nutritional and biochemical research at Oregon State University
 1977 to 1978, research chemist, Johns Hopkins University
 1976 to 1977, research chemist, Medical College of Virginia
 1973 to 1975, US Peace Corps, high school teacher in Lesotho, Southern Africa

Educational Background:

MA (1989), home economics, Oregon State University
 BA (1973), biochemistry, Oregon State University

Prior Governmental Experience:

Corvallis City Council, 1999-2000, 2007-2012

My core values are:

Participatory Democracy - *Decisions are made by the community, not leaders.*

I encourage development of neighborhood associations and seek their input in City decisions. I support citizen participation which has been a Corvallis hallmark of municipal government.

Ecological Wisdom - *Take into account the needs of future generations.*

I support the partnership between the City and the Corvallis Sustainability Coalition. Bicycle amenities, transit and reducing automobile commutes are my highest interest.

Nonviolence - *People participate out of a sense of community, not from coercion.*

I support the community policing model which Corvallis has adopted for over 15 years. The goal of law enforcement is to maintain community safety and livability.

Social and Economic Justice - *The needs of all people are met fairly.*

The library, parks, bicycle amenities, code enforcement, housing assistance, social services and transit are essential services, just as much as sewer, water, police and fire protection. A high level of municipal services ensures that everyone's needs are met.

Corvallis has a system of advisory boards, commissions and task forces that incorporate the opinions, knowledge and aspirations of hundreds of citizens in decisions made by city staff and elected officials. I will maintain and strengthen this system that involves everyone in charting the future of our community.

I am counting on the collective wisdom of our community to make progress, especially in rough economic times. Please join me in this work.

(This information furnished by Mike Beilstein)

The printing of this statement does not constitute an endorsement by Benton County, nor does the county warrant the accuracy or truth of any statement made.

CITY COUNCIL, WARD 5



**KENNY
DAVIDSON**

Occupation: Accounts Specialist, Consumers Power, Inc.

Occupational Background: US Army, 1986 - 1998

Educational Background: Linn-Benton CC; Univ. of Maryland, European Campus; Univ. of Phoenix, Albany Campus

Prior Governmental Experience: Albany Planning Commission; Chair, Linn County Democratic Party

This is about community.

As I walk, bike, and drive around Corvallis, there is one fact evident: Every resident of Corvallis sincerely cares about their city. I have conversations with you in the store, at your place of business, enjoying a walk in the park, having a meal downtown, working in your front-yard garden.

Many of us moved to Corvallis for its livability. We have a wonderful library, an active downtown, beautiful well-maintained parks. Corvallis is a living city. Just like all living things, Corvallis grows and changes. There are valid concerns in response to the growth, to the changes. Will Corvallis be able to handle additional affordable housing? Where can affordable housing be built? Will car owners be able to park downtown, at school, on their neighborhood street? What new business can Corvallis attract - businesses that care about their community, businesses that will become a viable part of Corvallis?

These concerns are my concerns. I live in my neighborhood, right next door to you. I work a full-time job, earning my paycheck as many of you do. My neighbors are long-time residents, retirees, and students...each person living their life as individuals, but always remembering that each is a vital part of our community.

As City Councilor, it is my pledge to listen to each concern, each suggestion, each complaint. Your concerns are my concerns. This is about community.

(This information furnished by Kenny Davidson)

The printing of this statement does not constitute an endorsement by Benton County, nor does the county warrant the accuracy or truth of any statement made.

CITY OF CORVALLIS

CITY COUNCIL, WARD 6



**JOEL
HIRSCH**

Occupation: Entrepreneur/Professional Musician, City Councilor

Occupational Background: Professional Musician: recording, performing, composing 30+ years, New York City, Los Angeles, Detroit; **1-800-DENTIST**, California, Rhode Island: Executive Officer, sales and management: Marketing for dental industry including commercial production for TV and radio, print, dental practice management, and operation of 100+ seat call center; **HYDROTHERMIC FLOTATION SYSTEMS, INC.** California: Owner, manufacturer, distributor of medical waterbeds. **Esalen Institute**, Big Sur, CA: Supervisor organic farm; Workshop facilitator (and participant)

Educational Background: California Institute of the Arts; California State University, Northridge; Central Michigan University; Extensive world travel.

Prior Governmental Experience: Corvallis City Council Ward 6 2009-2012 (2 TERMS)

I served both terms on the Administrative Services Committee helping facilitate City business from Economic Development, to the bag ban. Served as Council Liaison to Parks and Recreation board, Arts & Culture Commission, Civic Beautification and Urban Forestry Commission, Corvallis Tourism Board (VC), the daVinci Days board, and the Public Art Selection Commission. I've been encouraged again to run for re-election by so many who feel I have served you well, and understand that now with the experience of 2 terms on City Council, I can be even more effective. My career experience is in conventional business environments and non-conventional, non-traditional business models. I support Parks and Recreation; the Arts, and our Libraries. I'm a passionate and devoted environmentalist. And, with OSU's plans, we must be careful, cautious, responsible, and innovative about growth to remain a healthy and desirable community. I support Stewardship/Sustainability in both Business and the Environment. I support Diversity in our community and Equal Opportunity for All. I love our beautiful, friendly, charming, safe, lovely, and efficient City. I'm running for re-election to continue my active role in perpetuating, protecting and enhancing these qualities. I have enjoyed Corvallis City Council and I thank you for voting, and re-electing me.

(This information furnished by Committee to re-elect Joel Hirsch to City Council)

The printing of this statement does not constitute an endorsement by Benton County, nor does the county warrant the accuracy or truth of any statement made.

CITY COUNCIL, WARD 6



**STEVE
REDMAN**

Occupation: Managing Principal Broker, Town & Country Realty

Occupational Background:

- 25+ years in Real Estate, Banking & Finance
- 11 years as a Small Business Owner
- 6 years in Public K — 12 Education, Substitute Teacher
- 4 years of Military Service, USMC/USA

Educational Background: Oregon State University, B.S., Political Science, 1984

Prior Governmental Experience: None

Community Service:

- Leadership Corvallis, 2012 Graduate
- Corvallis Boys & Girls Club Board, President — Elect
- Corvallis Elks Lodge 1413, Finance Committee
- Rotary Club of Corvallis After Five
- Oregon State University - College of Business, Mock Interviewer
- Corvallis Homeless Shelter Coalition, Volunteer

Family: 2 Daughters — Jessica, 22 (OSU '12) Victoria, 19 (OSU Student)

Elect STEVE REDMAN for Ward 6

I love Corvallis! This wonderful city is my home and I want to do what I can to ensure that it remains the special place that it is for us all. My community priorities are public safety, education, entry-level housing, and the environment. I also am a big supporter of our libraries and the arts.

The knowledge and skills I can contribute to benefit City government include solving complex challenges in high-pressure environments with foresight, experienced-based judgment, and integrity. I offer citizens an opportunity to elect someone with "new energy" — someone who will offer a fresh perspective on things and help foster spirits of cooperation and innovation on the council. This will help the community reach its common sense goals in both an effective and transparent way.

Local governments have the responsibility to operate as logically and efficiently as possible. There is no doubt our future civic leaders will need to make intelligent choices in order to establish a sustainable financial future and keep the City moving in a progressive direction. I have the commitment, passion and operational experience for the job and I would appreciate your vote.

Elect STEVE REDMAN for Ward 6

(This information furnished by Steve Redman)

The printing of this statement does not constitute an endorsement by Benton County, nor does the county warrant the accuracy or truth of any statement made.

CITY OF CORVALLIS

CITY COUNCIL, WARD 7



**JOHN H.
DETWEILER**

Occupation: Retired

Occupational Background: Consultant; Federal employee; Naval Officer

Educational Background:

- MS, Oregon State University, Statistics
- CAGS, The American University, Operations Research
- MBA, Oregon State University, Business Administration
- MS, Oregon State University, Physical Oceanography
- BS, U. S. Naval Academy, General Engineering

Prior Governmental Experience:

- Benton County Board of Property Tax Appeals.
- Corvallis Core Services Committee.
- Branch chief, section chief, engineer, budget analyst, operations research analyst, management auditor at U.S. General Accounting (now Government Accountability) Office, U.S. Department of Energy, U.S. Department of the Navy, and contractor supporting Department of the Navy.
- Officer in U.S. Navy and U.S. Naval Reserve. Retired with rank of Captain (O6)

I have lived in Corvallis for a total of twenty-five years and have found Corvallis to be a wonderful place to live.

- City revenues are not keeping up with expenses leading to our running out of money.
 - I will use my considerable management and analytical experience to ensure our hard earned tax dollars are spent wisely.
- We need to encourage business to come to Corvallis, stay in Corvallis, and expand in Corvallis.
 - If someone is willing to invest in a venture that is in the best of interest of Corvallis, we need to work with them. If changes need to be made to the land development code to make the venture work, changes should be considered.
- OSU is going to admit more students. Corvallis and OSU have to create more student living facilities without destroying the livability of Corvallis.
- As a Council member, I will carefully balance our shared environmental, economic, and social concerns by setting priorities and making choices as necessary.

I have been married to a registered nurse for forty-nine years. We have two daughters: one is an environmental safety officer working in Antarctica; the other is an associate professor at University of Colorado Boulder.

For more information, see: <http://www.peak.org/~detweij>

(This information furnished by John H. Detweiler)

The printing of this statement does not constitute an endorsement by Benton County, nor does the county warrant the accuracy or truth of any statement made.

CITY COUNCIL, WARD 7



**BRUCE
SORTE**

Occupation: Community Economist

Occupational Background: Teaching, government contracting and budgeting, manufacturing, retail, banking, dry cleaning and farm work

Educational Background: Oregon State University B.S. 1973 Economics, M.A.I.S. 2002-Ag.Econ./Economics/Political Science.

Prior Governmental Experience: Corvallis City Council member including Budget Commission and Urban Services Committee, Housing and Community Dev. Commission (Co-Chair), West Corvallis Task Force, Harding PTO, OSU Faculty Senate (President)

Please vote for me to represent you on the Corvallis City Council. I bring a history of service and a passion for helping Corvallis be a wonderful community. While on the Council in 1995-1999 (chose not to rerun to finish my Masters), I helped develop the 2020 Vision, the housing portion of the Comprehensive Plan Update, the Transportation Plan and advocated strongly for including the fountain, restroom, and traffic calming in the Riverfront development.

Corvallis is facing a very difficult transition. We must balance the needs of short and longer term residents to keep our community livable. Supporting OSU while maintaining the quality of life in our neighborhoods will be a complex effort. My experience will help with this transition, including my work as a College Business and Personnel Officer and my current work as an Extension Service Community Economist helping communities across Oregon.

I will also focus on diversifying our economy, an efficient transportation system particularly our community supported transit service, basic services and facilities/services that bring our community together like parks and recreation. I will apply my professional experience and personal commitment to creating more opportunities for folks from all walks of life to enjoy the benefits of living in Corvallis. I have reconciled budget constraints with important needs and goals in the past and look forward to meeting that challenge again.

These efforts will take a lot more "walk" than "talk" to keep the Corvallis that convinced Joanne and me that this was the place to raise our family. I look forward to visiting with you and representing your ideas.

(This information furnished by Bruce Sorte)

The printing of this statement does not constitute an endorsement by Benton County, nor does the county warrant the accuracy or truth of any statement made.

CITY OF CORVALLIS

CITY COUNCIL, WARD 7



**PAUL
WOODS**

Occupation: Electrical Engineer, Aptina LLC

Occupational Background: Electrical Engineer, various companies in Oregon since 1992

Educational Background: Master of Science, Electrical Engineering, Brigham Young University

Prior Governmental Experience: None

With costs rising 6% per year and property taxes increasing at just 3% per year, Corvallis is facing a perpetual gap in funding, mainly due to job reductions at HP. That threatens the economic sustainability of our City. To close the gap we can reduce services, increase taxes, or increase the number of tax-paying entities. I prefer the last option and will work to help encourage new businesses in Corvallis.

Fortunately one of the country's finest research institutions is right in our town---Oregon State University. We need to make it attractive for start-up companies that spring out of OSU research to remain here.

The economic development commission has a strategy for this sort of economic diversification that I will support as a member of the city council, in order to create and maintain an economically sustainable Corvallis.

Too often, young families who work in Corvallis cannot afford to live here. They end up living outside of Corvallis and commuting. This has many disadvantages including shrinking school populations (down 11% in the last ten years) and increased traffic congestion. The City needs more affordable housing so that people who work here can live here.

My experience working for technology companies in Corvallis for the last 18 years will help me understand the issues facing start-up companies in Corvallis.

In various volunteer organizations (including the Corvallis Family History Center where I served as Director), I have gained experience in budgeting and in directing volunteers. These skills will help me deal with the City's funding gap in the short term, and allow me to be an effective liaison to the citizen committees.

Please vote for me to represent Ward 7 on the City Council.

Space is limited in this Guide, please visit my website
<http://www.woods4ward7.info>

(This information furnished by Paul Woods)

The printing of this statement does not constitute an endorsement by Benton County, nor does the county warrant the accuracy or truth of any statement made.

CITY COUNCIL, WARD 8



**BIFF
TRABER**

Occupation: Retired; Community leader; Corvallis City Councilor-Ward 8; Currently active in: Corvallis Rotary (Chair, Vision Comm.), United Way (Chair, Income Vision Council), and New Roots (Board member); Treasurer-Benton County Democrats, Sara Gelser for State Representative

Occupational Background:

Thirty years in computer systems industry:

- Caldera-Senior VP
- SCO-VP
- Unix Systems Lab-Director
- Bell Laboratories-Department Head
- Bank of America-Systems Analyst

Educational Background: University of California Berkeley-BA Computer Science and Applied Math; University of California Berkeley-MS Industrial Engineer and Operations Research

Prior Governmental Experience: Corvallis City Council; Benton County Charter Review Committee; Precinct Committee Person

Ten years of community service to Corvallis:

- Board President-Corvallis Rotary, United Way, Leadership Corvallis-UW Community Impact Committee, including grant allocations for Corvallis' Social Service Funding
- Board member-Boys & Girls Club of Corvallis
- St Vincent DePaul Food Bank
- Treasurer-Benton County Democrats & multiple campaigns

I serve the citizens of Ward 8 and Corvallis, helping the city thrive while working through several challenges.

Please give me your vote so I can continue my work to:

- Place the city on a sustainable financial basis. We need to insure that the city, within its means, provides critical services at levels expected by its citizens.
- Refocus and reinvigorate economic development for job creation. Corvallis must have a vibrant economy with growing businesses and a fertile start-up environment.
- Proactively deal with impacts from the growth of OSU. We must make the most of the economic and social opportunities OSU presents while managing impacts.

Voting for me gets results. I have and will continue to apply my extensive business and technology management skills and my in-depth community knowledge to city government.

Your vote for me is a vote for an open, hard-working representative for Ward 8 and Corvallis.

(This information furnished by Biff Traber)

The printing of this statement does not constitute an endorsement by Benton County, nor does the county warrant the accuracy or truth of any statement made.

CITY OF PHILOMATH

MAYOR



**ROCKY
SLOAN**

Occupation:

Electrician with M&W Electric-18 years

Occupational Background:

Evanite Fiber Corporation
Mary's River Lumber
WTD Industries

Educational Background:

Philomath High School grades 8-11
Crescent Valley High School Graduate
Electrical Apprenticeship Program 5 years

Prior Governmental Experience:

City Councilor — City of Philomath 2008-current
City Council President 2010-current
Public Works Committee 2008-current

- Current acting Chairman

Philomath Police Committee 2008-current

- Current acting Chairman

Cascades West Transportation Committee 2008-current

- Current Executive Member

My family and I are life-long residents of Philomath. I am deeply rooted in this community and care about its citizens, its livability and its continued economic growth. I've enjoyed serving our community through volunteer work (Philomath Community Services, Corvallis Assistance League and Habitat For Humanity) and through my work as city councilman and committee member.

I have a strong work ethic which I will use to make a difference. As mayor of Philomath I will work to attract businesses to locate in Philomath, which will in turn create new jobs and grow city revenues. I will treat the city's money as if it's my own by continuing to maintain a balanced budget while providing quality service to the citizens of Philomath. I will invest my time, energy and experience in the city of Philomath by working with its agencies and programs to meet our goals to build a better Philomath.

(This information furnished by Rocky Sloan)

The printing of this statement does not constitute an endorsement by Benton County, nor does the county warrant the accuracy or truth of any statement made.

CITY OF PHILOMATH

CITY COUNCIL



**MATTHEW
BIEREK**

Occupation:

Controller, Mega Tech of Oregon-A high technology contract electronics manufacturing firm
Treasurer and Director-Philomath Scout Lodge, Inc. a 501(c)(3) non-profit organization
Board Member-Philomath Community Foundation a 501(c)(3) non-profit organization

Occupational Background:

Tax Manager-Videx, Incorporated

Educational Background:

College of Financial Planning
ISM American Production and Inventory Control Society
US Customs Service Broker Licensee

Prior Governmental Experience:

Four Term incumbent City Councilor
Chaired-Public Works Committee
Chaired-Ordinance Committee
Member-Budget Committee

While continuing to serve you as your City Councilor over the past four terms, our city has maintained efficient and frugal use of public resources and capitalized on opportunities to lower infrastructure improvement costs all while positioning our city to endure the financial crisis this country is experiencing.

Should you choose to return me to office for a fifth term I will continue to help provide you the best in services, with our budget and in line with our City Charter.

(This information furnished by Matthew Bierek)

The printing of this statement does not constitute an endorsement by Benton County, nor does the county warrant the accuracy or truth of any statement made.

CITY COUNCIL



**JASON C.
LEONARD**

Occupation:

Golf Course Superintendent

Occupational Background:

14 years of Golf Course Maintenance

Educational Background:

Oregon State University, B.S. in Horticulture

Prior Governmental Experience:

None

As a resident of Philomath, I would like to join the city council to be a voice and contributor to our community. By taking part, I believe my experience and knowledge of working with people and balancing budgets through these economic hard times can assist in making our town stronger and to its growth.

(This information furnished by Jason C. Leonard)

The printing of this statement does not constitute an endorsement by Benton County, nor does the county warrant the accuracy or truth of any statement made.

CITY OF PHILOMATH

CITY COUNCIL



**SEAN A.
MANNING**

Occupation: Customer Service, WOW!Fitness

Occupational Background: Curves; medical transcriptionist for John E. Gambee, M.D.

Educational Background: Brigham Young University (BA English)

Prior Governmental Experience: City of Philomath Budget Committee 2012

Our family moved to Philomath in 2007. We have found it to be a closely-knit community with lots of interest in the schools, community activities, and family-friendly business. After attending several City Council meetings, I met individuals from various walks of life. There were definitely differences of opinions but more importantly an obvious commitment to work together in the interest of the community. I felt welcome and as though my opinions mattered.

I am running for City Councilor because I have a strong desire to be part of such a group. As a working mom involved with my children's sports, scouts and schools, I have a vested interest in doing what I can to encourage the family and business friendly environment we enjoy in Philomath.

This year I have been a member of Philomath's Budget Committee and have been impressed by the fiscal responsibility seen in our local government. Unlike many cities, Philomath is not overly reliant on subsidized services to make our city run and this kind of economic responsibility is crucial, especially now.

As a newcomer to city government I look forward to hearing from many Philomath residents and doing my part to sustain the joint efforts between our city government and community as we continue to enhance and advance the wonderful city of Philomath.

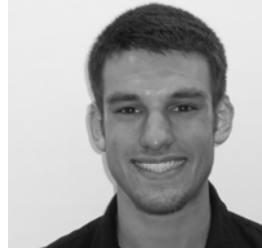
Thank you for considering me.

Sean Manning

(This information furnished by Sean Manning)

The printing of this statement does not constitute an endorsement by Benton County, nor does the county warrant the accuracy or truth of any statement made.

CITY COUNCIL



**NOLAN
BARTLOW**

Occupation: Student / Ray's Employee

Occupational Background: OSU Technical Assistant (07-08)

Educational Background: Philomath High School Graduate (2011)

Prior Governmental Experience: None

Nolan Bartlow graduated from Philomath High School in 2011, and is a current student at Oregon State University studying Radiation Health Physics. He works part time in the produce department at Ray's Food Place in Philomath. Nolan is 20 years old, has lived in Philomath for 11 years, and will bring a young, conservative perspective to the Philomath City Council, if elected.

(This information furnished by Nolan Bartlow)

The printing of this statement does not constitute an endorsement by Benton County, nor does the county warrant the accuracy or truth of any statement made.

BENTON COUNTY

MEASURE 02-79

BALLOT TITLE

Caption:

Renew Levy for Limited Public Safety and Health Services

Question:

To continue health and safety services, shall Benton County impose a five-year \$.90 per \$1,000 assessed valuation beginning 2013?

This measure renews current local option taxes.

Summary:

Renewal of the current levy would continue:

- Rental of 40 jail beds.

Renewal would also fund limited health and safety services which may include:

- Sheriff's deputies 24-7 patrol and school resource program duties;
- Substance abuse treatment programs for juveniles and adults;
- Juvenile counseling and outreach;
- Juvenile detention capacity;
- Street crimes and child abuse prosecution;
- Prevention of infectious disease outbreaks; or
- Mental health, addiction and children's health services.

Renewal of the levy at \$.90 per \$1,000 assessed value would continue the tax at a cost of \$7.50 per month or \$90 per year for every \$100,000 of a property's assessed value.

At the maximum rate this levy is estimated to impose taxes of \$6,111,000 in 2013, \$6,279,000 in 2014, \$6,486,000 in 2015, \$6,664,000 in 2016, and \$6,847,000 in 2017.

EXPLANATORY STATEMENT

The purpose of this levy renewal is twofold. First, it would continue funding the rental of 40 beds for Benton County inmates in nearby county jails. Second, it would continue funding for public safety and health services because of the expiration of guaranteed federal forest payments.

This levy would continue the same maximum tax rate of \$.90 per \$1,000 assessed value (AV) as the previous levy.

Renewal of Jail Space Rental and Corrections Levy

This levy would continue to fund rental of 40 jail beds for Benton County inmates and related services, which may include:

- Inmate placement and transportation;
- A transition program for inmates who complete their sentences and need assistance to return to the community; and,
- Video link technology, which enables judges to conduct video court appearances thereby reducing transportation costs.

Maintain Limited Public Safety and Health Services

This levy would continue health and safety services that were supported by the previous levy including:

Public Safety Services: 24-hour sheriff's patrol and investigation; substance abuse treatment programs for juveniles and adults; prosecution of additional street crimes and child abuse cases; counseling and outreach for juvenile offenders; juvenile detention services; and the school resource deputy program that works with students on substance abuse and other prevention activities.

Health Services: Communicable disease outbreak prevention and investigation; high-risk maternal/child healthcare nursing and, *A Community Integrated Service Team (ACIST)*, which provides prevention and early intervention to children at risk of abuse, chemical dependency, delinquency, and school failure.

Reason for Revenue Shortfall

Over 20% of the land in Benton County is federally owned. Guaranteed payments to counties for federal forest lands have declined each of the last five years and no more payments are expected after this year.

Levy Cost

At \$.90 per \$1,000, the tax would cost \$7.50 per month or \$90 per year for every \$100,000 of a property's assessed value.

The levy would be for five years beginning in 2013.

(Submitted by the Benton County Board of Commissioners)

BENTON COUNTY

MEASURE 02-79

ARGUMENT FOR:

VOTE YES ON 02-79!

This is a **renewal** of the 2007 health and safety levy **at the same rate** as before-\$.90/\$1,000. Only you can decide the kind of community that makes Benton County a good and safe place to live.

The portion of your property taxes Benton County receives has **decreased three times since 2003**. Only **18 cents of each dollar** you pay in property taxes **goes to Benton County**. The remainder goes to schools and other taxing districts like the cities of Corvallis, Philomath, Monroe, Adair Village and Albany. This measure, as with the 2007 measure includes the long-standing levy for renting jail beds at \$.26/\$1000 of the assessed value of your property (not the market value, which is typically higher than assessed value).

VOTE YES ON 02-79!

This measure will maintain some county **services that are important to community** health and safety for the next five years:

- 24-hour sheriff's patrol.
- Space to house inmates convicted of crimes in Benton County.
- Alcohol and drug treatment for juvenile and adult drug court offenders.
- Space for juveniles who must be detained for their safety and ours.
- School resource deputies.
- Criminal prosecution.
- Juvenile counseling and outreach.
- Prevention of infectious disease outbreaks.
- Early intervention for children at risk of abuse, chemical dependency, delinquency and school failure.
- Mental health, addiction and children's health services.

We urge you to **vote Yes on measure 02-79** so that we may continue providing the services you have come to expect from your county government. Without this measure, many services will be discontinued or reduced.

Only you can decide to make Benton County the kind of community that is a healthy and safe place to live.

(This information furnished by Benton County Commissioners Jay Dixon, Annabelle Jaramillo, Linda Modrell)

The printing of this argument does not constitute an endorsement by Benton County, nor does the county warrant the accuracy or truth of any statement made in the argument.

MEASURE 02-79

ARGUMENT FOR:

MAINTAIN VITAL HEALTH AND PUBLIC SAFETY SERVICES: VOTE YES ON MEASURE 02-79

Our community and its residents benefit daily from the vital services provided by Benton County. We count on the sheriff deputies to patrol our roads and investigate crimes. We rely on our corrections staff to operate the county jail and facilitate the transition of inmates back into the community.

Our schools and families benefit from the school resource deputy program that works with students on substance abuse and other prevention activities, as well as the Juvenile Department staff who provide counseling and outreach services for at-risk youth. In addition, a multi-disciplinary team works to provide prevention and early intervention to children at risk of abuse, chemical dependency, delinquency and school failure.

And for us at Good Samaritan Regional Medical Center and Samaritan Health Services, we look to our colleagues in the Health Department to investigate communicable disease outbreaks and lead prevention efforts. Specialized nurses and case managers help ensure that local women deliver healthy babies and receive the after-care services they need. And community health workers reach out to under-served populations with important health information and screenings.

All these services are supported by the current five-year local option levy that voters are being asked to renew in November. The levy will continue the same maximum tax rate of 90 cents per \$1,000 assessed value. By voting YES ON MEASURE 02-79, you are ensuring that these vital health and public safety services will continue, at no additional cost to taxpayers.

Our health professionals work hand-in-hand with Benton County to help ensure that all local residents receive high quality health services. Measure 02-79 maintains those services and contributes to the quality of life that makes our community such a special place to live and work.

Please VOTE YES ON MEASURE 02-79.

Sincerely,
Larry Mullins, DHA
President/Chief Executive Officer
Samaritan Health Services

(This information furnished by Samaritan Health Services)

The printing of this argument does not constitute an endorsement by Benton County, nor does the county warrant the accuracy or truth of any statement made in the argument.

BENTON COUNTY

MEASURE 02-79

ARGUMENT FOR:

Measure 02-79 will directly impact the quality of your life in Benton County.

In 2007, you passed a similar measure thereby agreeing to pay a tax of less than 1/10th of 1 percent of the assessed value of your real property to help support the health, safety and welfare of your families, friends and neighbors.

All of us should be proud of the thousands of people that were helped, of the property that was protected, and of the lives that were saved by this modest investment in the betterment of our community.

A YES vote on Measure 02-79 will continue this critical investment in the livability of our community.

As Circuit Court judges, we see the direct benefits of this investment every day and we fear the potential devastating impact that a loss of this funding will have on public health and safety.

- A YES vote on Measure 02-79 will help assure Benton County's ability to:
- maintain its current level of law enforcement patrols
 - effectively prosecute criminal conduct
 - maintain minimally adequate jail space to house dangerous criminals
 - provide drug and alcohol treatment to criminal offenders
 - properly monitor convicted criminals in our community.

- In addition, these funds are vital to the County's ability to meet the needs of our children by:
- funding necessary early intervention programs
 - placing resource officers in our schools
 - providing drug and alcohol prevention and treatment services
 - maintaining adequate bed space in the juvenile detention facility
 - funding juvenile counselor positions to work with our at risk youth.

We urge you to show your continued support for the protection of the health, safety and welfare of all who live and work in Benton County by voting YES on Measure 02-79. It is up to you to continue funding essential public safety services.

*(This information furnished by
Honorable Locke A. Williams, Honorable Janet S. Holcomb,
and Honorable David B. Connell)*

The printing of this argument does not constitute an endorsement by Benton County, nor does the county warrant the accuracy or truth of any statement made in the argument.

MEASURE 02-79

ARGUMENT FOR:

VOTE YES - BENTON COUNTY LOCAL OPTION LEVY 02-79

As local citizens interested in history and culture, we feel that it is important for the county to continue to provide general fund support for the Benton County Historical Society and Museum that the voters of Benton County approved twice in the past. The funding promotes the Society's mission: To preserve the material and intellectual culture of Benton County, Oregon, by acquiring and caring for significant collections that illustrates and interpret the history of the area and its relationship to the world; and to enrich people's lives through exhibitions and educational programs. The Society has been a good steward of these resources and operates in the black.

Since acquiring the Homer Collection from Oregon State University the Benton County Museum now houses the third largest collection of historical artifacts in the State. These are cared for and preserved in the state-of-the-art Johnson Collection Center on the Philomath campus of the Society. And plans are progressing to the build the new museum in downtown Corvallis that will provide additional exhibition, education and event space for the community.

Although not specifically part of the levy, county funding for all general services risks being reduced without the levy. The History Fund provides historical and cultural education for all ages, attracts grants to our area, supports those learning their family's past history, and offers cultural facilities for visitors to our area. It allows each of us to better understand the area we live in. Voting 'yes' will not increase you property taxes. Please join us in voting YES on the Benton County levy on November 6.

Jo Anne Trow	Ann Smart
Neal Peterson	Mike Schweizer
Rick Wallace	Rod Harvey
Alice H. Rampton	

(This information furnished by Jo Anne Trow)

The printing of this argument does not constitute an endorsement by Benton County, nor does the county warrant the accuracy or truth of any statement made in the argument.

BENTON COUNTY

MEASURE 02-79

ARGUMENT FOR:

Five years ago, Benton County voters were clear, Public Safety is a Priority. It's time again to *Renew* this commitment to the safety of the community we all share.

In 2007, The Sheriff's Office operated at less than full capacity. Patrol services were only available 20 hours each day. Jail capacity was in danger of being reduced by half. The District Attorney's Office was down over 25% and not prosecuting hundreds of cases due to staffing reasons. And the community said we need Public Safety to be a Priority.

Since then, The Sheriff's Office and District Attorney's Office have slowly rebuilt and are now fully staffed. This effort took time. Hiring and training deputy sheriffs and deputy district attorneys was a time and resource consuming expense. Now we face the prospect of all this effort being for nothing. We need to keep Public Safety a Priority.

Measure #02-79 does this. This levy will continue services we currently have. By *Renewing* this levy, we maintain:

- 40 jail beds in other counties to augment our severely undersized jail.
- 7 patrol deputies providing 24/7 patrol services and school resource program.
- 7 jail and parole and probation deputies supporting the jail and transition center.
- 2 deputy district attorneys and the paralegal support staff.
- 1 mental health professional supporting the local schools.
- A part-time nurse dedicated to fighting infectious diseases.
- Juvenile counseling and outreach professional

We have been without these services before, many in our recent history. We have made the efforts, invested the time and money, and brought our community back to where it is today. These are not projects, buildings, land, or equipment. These are the men and women dedicated to keeping Benton County a safe and healthy community to live in. These people need your support in voting **YES on Measure #02-79** and keeping Public Safety a Priority.

Benton County Deputy Sheriff's Association, Executive Board

American Federation of State, County, and Municipal Employees, Local 2064, Executive Board
 BCDSA
 AFSCME Local 2064

*(This information furnished by
 BCDSA & AFSCME Local 2064)*

The printing of this argument does not constitute an endorsement by Benton County, nor does the county warrant the accuracy or truth of any statement made in the argument.

MEASURE 02-79

ARGUMENT FOR:

As present and past Sheriffs and District Attorneys, we are uniting together in this joint statement to explain the serious damage that will occur with our local criminal justice system if Measure 02-79 is not passed.

Five years ago, voters passed the local option levy restoring critical funding for the Sheriff's Office and District Attorney's Office. This allowed the Sheriff's Office to restore 24/7 patrol coverage as well as the District Attorney to prosecute critical cases.

The situation is serious once again.

SHERIFF'S OFFICE

Without the renewal of the levy, the Sheriff's Office will lose the following services:

- 24/7 county wide patrol coverage
- 7 patrol deputies providing the coverage as well as conducting investigations
- School Resource Deputy program resulting in increased vandalism
- 40 jail beds rented in other counties resulting in reliance on only our county jail to house prisoners, resulting in a 50% reduction in available jail beds
- Transition Center to assist homeless and mentally ill offenders with housing and other critical needs
- 7 Deputies in the Jail and Parole & Probation

DISTRICT ATTORNEY'S OFFICE

Without the renewal of the levy, the District Attorney's Office will lose the following services:

- Loss of 2 deputy DA's and 1 paralegal. Each deputy handles 500+ cases a year, one of the highest caseloads in the state.
- 25% reduction in criminal prosecution services (currently average more than 13,000 scheduled court appearances, and more than 32,000 services to victims per year).
- 25% reduction in the number of cases prosecuted due to lack of deputy district attorneys necessary to appear in court.
- Proactive response to drug-related crime in our community.

The county levy is essential to maintain current services. We urge a YES vote on Measure #02-79 on November 6, 2012.

Diana Simpson Current Sheriff	John Haroldson Current District Attorney
Jim Swinyard Sheriff, 2001-2006	Scott Heiser District Attorney, 1999-2007
Stan Robson Sheriff, 1995-2001	Pete Sandrock District Attorney, 1977-1999
Dave Cook Sheriff, 1989-1995	

*(This information furnished by
 Sheriff Simpson & District Attorney Haroldson)*

The printing of this argument does not constitute an endorsement by Benton County, nor does the county warrant the accuracy or truth of any statement made in the argument.

BENTON COUNTY

MEASURE 02-79

MEASURE 02-79

ARGUMENT FOR:

Oregon Nurses Urge a "YES" Vote ON Measure 02-79!

The Oregon Nurses Association, Oregon's oldest and largest professional association and union for registered nurses urges a "Yes" vote on 02-79.

The Benton County Public Health and Safety levy provides funding for critical public health services that keep all of us safe and help protect some of our most vulnerable residents.

In addition to vital funding for public safety, this levy funds nearly a quarter of Benton County's public health nursing capacity.

Benton County nurses work to prevent infectious disease outbreaks, provide preventive care including immunizations and health screenings, and provide early intervention for some of the most vulnerable children, including those who are at risk of abuse. Benton County nurses provide mental health services, addiction, and children's health services. These services help protect the public health, and help assure the safety and wellness of county residents.

Without renewing the levy, the county would be forced to make drastic cuts to health services like these that the community depends on.

Vote "YES" on Measure 02-79 to protect public health and safety, and maintain the services that Benton County nurses provide to the community.

(This information furnished by Oregon Nurses Association)

ARGUMENT FOR:

The League of Women Voters of Corvallis supports the passage of Measure 02-79, a renewal of the levy from 2007. The League of Women Voters, a nonpartisan political organization, encourages informed and active participation in government, works to increase understanding of major public policy issues and influences public policy through education and advocacy. The following are our adopted positions.

- Support Adult Correction alternatives to jail and city/county cooperation in the joint use of corrections facilities.
- Support the Juvenile Corrections diversion and support services and oppose holding juveniles in any adult (jail) facility.
- Support comprehensive and integrated violence prevention and intervention programs that involve all sectors of the community.
- Support Public Health Services in Benton County such as dissemination of public health information and recognition of drug abuse as a health problem

These are all services which will be affected without passage of this levy.

*(This information furnished by
The League of Women Voters of Corvallis)*

The printing of this argument does not constitute an endorsement by Benton County, nor does the county warrant the accuracy or truth of any statement made in the argument.

The printing of this argument does not constitute an endorsement by Benton County, nor does the county warrant the accuracy or truth of any statement made in the argument.

BENTON COUNTY

MEASURE 02-79

ARGUMENT FOR:

Five years ago, the quality of life we have long enjoyed here was in jeopardy.

Our Sheriff's Office was down to just 15 deputies covering 798 miles of roads, and from 3 a.m. to 7 a.m., there was no patrol at all. The school resource deputy program working to reduce youth substance abuse and curtail juvenile crime was gone.

Our District Attorney's office ranked last in the state in prosecutors-to-population. We had too few Deputy DAs handling too many cases. 500+ cases had to be declined, and those criminals weren't prosecuted.

Our County Health Department's budget was cut \$700,000. Among the hardest hit programs were those with long-term consequences, such as high-risk mother/child healthcare nursing, and early intervention for children at risk of abuse or substance dependency.

The situation was bad. But enough caring voters stepped up to pass a 5-year local option levy. All those wrongs were reversed.

It's now five years later. We the voters need to renew the local option levy, to protect vital services, and prevent harmful cuts. Vote YES on 02-79.

Without your YES vote, convicted criminals will have to be let back onto our streets, because funding for jail bed rentals in other counties will be eliminated.

Without your YES vote, hundreds of provable criminal cases won't be prosecuted, because funding for the District Attorney's office will be cut.

Without your YES vote, there won't be 24/7 crime prevention and fastest emergency response, because funding for deputies patrols will be cut.

Without your YES vote, there won't be adequate services to help prevent infectious disease outbreaks, or provide mental health, addiction, and children's health services, because funding will be cut.

Don't let this happen in this wonderful place we all call home. Put your vote where your heart is. Keep Benton County safe and healthy. Vote YES on 02-79.

Cliff Trow Anne Schuster
Curtis Wright Dan Rayfield

*(This information furnished by
Citizens for a Safe & Healthy Benton County PAC)*

The printing of this argument does not constitute an endorsement by Benton County, nor does the county warrant the accuracy or truth of any statement made in the argument.

MEASURE 02-79

ARGUMENT AGAINST:

Give us more money. That's what the county asks. Voters and taxpayers can rightfully ask: Why?

Tax proponents (at their website: renewthelevy.com) say because all county services funded by the levy would be cut if the levy fails. How do they know that? Only the county commissioners can decide that. The commissioners haven't said one way or the other what they would do if the levy fails.

County services are arbitrarily assigned for funding by the levy. If the levy fails, other county funds can be and certainly would be shifted to fund most of the targeted services.

So, what would the commissioners really cut if the levy fails? Actually, the county has already made cuts in its services. That is what the County says in its pamphlet entitled "Benton County Budget-At-A-Glance 2011-2013." The pamphlet doesn't say what was cut or when. We are ominously left to assume that the cuts have harmed us.

Do you know what has been cut? Have the cuts harmed you or had any impact on your life? Few of us could identify any county service cuts. Fewer could say that the cuts have had any impact on our lives.

Later in the pamphlet the County explains that it has downsized its workforce through attrition and planned reductions. Basically, the workforce has become leaner and more efficient. That's good! And that's also why you weren't even aware that any cuts had occurred.

County officials are understandably reluctant to acknowledge how effective their belt tightening has been. They prefer to have more money, but have managed well with what they have. We should encourage them to continue their cost cutting. We do that by voting NO on 02-79.

The county hasn't nearly reached the limit on available cuts. Much more can still be done. See the list of citizen proposed budget cuts at <http://nolevy2012.blogspot.com>. You can help. Add to that list!

(This information furnished by David Grappo)

The printing of this argument does not constitute an endorsement by Benton County, nor does the county warrant the accuracy or truth of any statement made in the argument.

CITY OF CORVALLIS

MEASURE 02-80

BALLOT TITLE

Caption:

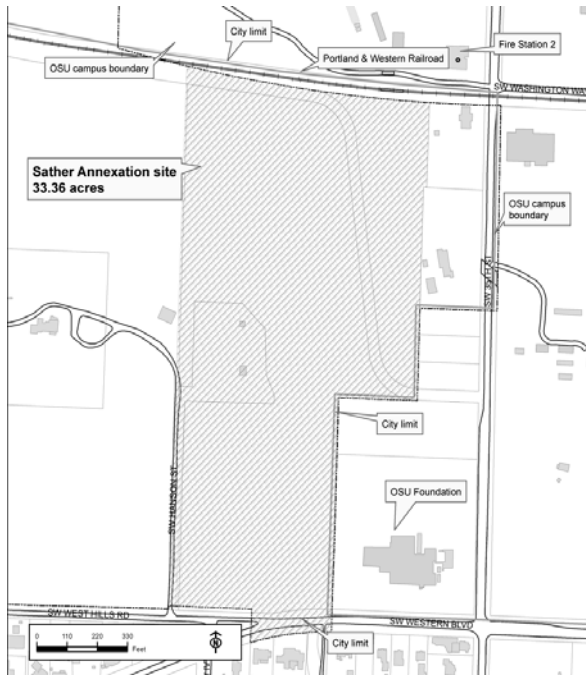
Proposed Annexation of the Sather Site

Question:

Shall the 33.36-acre Sather Annexation site be annexed?

Summary:

Approval of this measure would annex approximately 33.36 acres into the City of Corvallis, including 31.65 acres of private property associated with Tax Lots 1100 and 1200, 0.54 acre of public right-of-way, and 1.17 acres of railroad right-of-way. The site to be annexed is located west of SW 35th Street, and north of SW Western Boulevard. Approximately 30 acres would be zoned RS-12 (Medium-High Density Residential) and approximately 1 acre would be zoned C-OS (Conservation - Open Space), if the annexation is approved.



EXPLANATORY STATEMENT

The 33.36-acre area proposed for annexation is located west of SW 35th Street and north of SW Western Boulevard and SW West Hills Road. The site abuts property owned by Oregon State University. The area includes 0.54 acre of adjacent Western Boulevard / West Hills Road right-of-way, 1.17 acres of Portland & Western railroad right-of-way, and 31.65 acres of private land that is actively farmed. The Comprehensive Plan Map designations for the property are Residential - Medium High Density and Open Space - Conservation. If annexed, the property would be zoned RS-12 (Medium-High Residential) and C-OS (Conservation - Open Space). The proposed zones are consistent with the City's Comprehensive Plan Map designations.

Annexation requests are required to include a drawing to illustrate how the site could be developed. The applicant's drawing depicts the development of a public street network and several buildings that could contain residential uses permitted in the RS-12 zone. Any development on the property would have to be consistent with Land Development Code requirements regarding uses, setbacks, vehicle parking, open space, Natural Features protections, storm water runoff and detention, and other applicable development standards.

This project was analyzed for compatibility impacts and public service impacts, including potential traffic and utility impacts. Analysis found consistency with the City's compatibility criteria and the City's adopted Master Plans for items such as transportation, parks, trails, sewer, water, and storm drainage.

This land was identified for eventual annexation and development in 1980 when the urban growth boundary was adopted. This was reaffirmed with the acknowledgment of the City's 1998 Comprehensive Plan update. Water, sewer, and storm drainage services are available near the site, and are adequately sized to serve potential development on the site. Some additional public facility and service improvements would need to be constructed with future development of this site to satisfy Land Development Code Chapter 4.0 criteria. City ordinances specify that developers will be responsible for on-site and off-site costs associated with street and utility improvements needed for land development projects.

The City Council found the annexation request to be consistent with the policies of the City's Comprehensive Plan, Corvallis Land Development Code, and other City and State policies and standards. Citizens are encouraged to become informed about the annexation request. Full copies of the project's staff reports and Planning Commission and City Council hearing minutes are available at the Corvallis-Benton County Public Library (645 Monroe Avenue).

(Submitted by the City of Corvallis)

BENTON COUNTY	
MEASURE 02-80	MEASURE 02-80
<p>ARGUMENT FOR:</p> <p style="text-align: center;">Sather Annexation Statement of Support Corvallis Chamber of Commerce</p> <p>I urge Corvallis voters to say "<u>Yes</u>" to this important annexation because it will help address the need for student housing in Corvallis.</p> <p>Urgent Need for Student Housing Oregon State University is the foundation of our community and is flourishing. Over the past decade, OSU has attracted thousands more students. But we need more room in Corvallis for them to live.</p> <p>A Better Solution The Chamber of Commerce strongly supports the Sather Annexation. It will provide OSU student housing on a vacant site that's right next to campus. Students will be able to walk and bike to class. This project will relieve the impact of growth on established family housing in local neighborhoods.</p> <p>Revenue for Our City and Schools This new student housing will be privately owned and is expected to increase local property tax revenues by \$400,000 to \$600,000 each year. These taxes support our schools, the City of Corvallis, and Benton County.</p> <p>Local Jobs The construction of this project will add hundreds of jobs to the Corvallis area economy.</p> <p>For all of these reasons, I urge Corvallis voters to join me in supporting the Sather Annexation.</p> <p>Bob Grant, President Corvallis Chamber of Commerce</p> <p style="text-align: center;"><i>(This information furnished by Bob Grant, Corvallis Chamber of Commerce)</i></p>	<p>ARGUMENT FOR:</p> <p style="text-align: center;">Sather Annexation - A Better Solution for Student Housing</p> <p>Landmark Properties specializes in developing quality housing for students at major universities. We design, build, own, and manage our student housing communities.</p> <p>Corvallis voters should also know:</p> <p>Housing Crunch: Corvallis Planning Commission and City Council determined the city lacks enough developable land for student housing. Studies confirm the vacancy rate for rental housing is below 1%. This annexation provides an ideal 33-acre site — outside established neighborhoods yet bordering campus — to supply needed housing.</p> <p>Bicycle-Friendly: The site is a five-minute bike ride to the center of OSU campus, connected by bike lanes and sidewalks. The housing is designed with modern biking amenities to facilitate students' top travel preference.</p> <p>Access: The main access will be from SW 35th Street, keeping traffic off Western Boulevard.</p> <p>Parking: We will ensure there's enough parking on-site. Our current plan provides a parking space for each student bedroom and additional spaces to accommodate guests.</p> <p>Environment: Our design will set aside land to protect Oak Creek, native oak trees, and riparian habitat.</p> <p>Economy: This project will pay significant property taxes to the city, county and schools. Hundreds of jobs will be created during construction.</p> <p>We appreciate your <u>Yes</u> vote. <i>The Sather Annexation promises a better solution for student housing.</i></p> <p>Blair Sweeney Landmark Properties</p> <p style="text-align: center;">The Sather Family asks that you vote <u>Yes</u> on the Sather Annexation</p> <p>This property has been in our family for two generations. It is located at the edge of the OSU campus and has been inside Corvallis' urban growth boundary since 1980. The large site is well buffered from neighbors and <u>is the single best place in Corvallis to meet the pressing need for student housing.</u></p> <p>We believe the Sather Annexation is just what Corvallis needs to get college students out of established neighborhoods and into houses designed and built to meet their unique requirements. Please join us in voting <u>Yes!</u></p> <p style="text-align: center;">Ron, Al, and Larry Sather</p> <p style="text-align: center;"><i>(This information furnished by Landmark Properties)</i></p>
<p><small>The printing of this argument does not constitute an endorsement by Benton County, nor does the county warrant the accuracy or truth of any statement made in the argument.</small></p>	<p><small>The printing of this argument does not constitute an endorsement by Benton County, nor does the county warrant the accuracy or truth of any statement made in the argument.</small></p>

BENTON COUNTY

MEASURE 02-80

ARGUMENT FOR:

Over the past decade it has become obvious to all of us that Corvallis urgently needs more housing for OSU students. At the same time, Corvallis also needs construction jobs.

The simple formula is put these two needs together. Let's get our skilled craftsmen back to work building high quality homes for students.

The Sather Annexation promises housing for 650 or more students on a large site that's right next to the OSU campus. The project will also provide 155 to 220 full-time, well paid construction jobs. I can't imagine any higher priority for Corvallis voters than saying "Yes" to this annexation proposal that has already been approved by the Corvallis Planning Commission and City Council.

Tom Gerding
 President and CEO
 Gerding Builders

(This information furnished by Tom Gerding)

The printing of this argument does not constitute an endorsement by Benton County, nor does the county warrant the accuracy or truth of any statement made in the argument.

MEASURE 02-80

ARGUMENT AGAINST:

As citizens from throughout Corvallis, we support timely and appropriate annexation; however, **we strongly oppose Ballot Measure 02-80**. The high-density student housing proposed for this family neighborhood by an out-of-state developer is entirely out of character with our city. The disadvantages of this annexation/development far outweigh its advantages.

1. *Collaboration Corvallis* is working to change the Land Development Code to address problems created by off-campus student housing, including traffic, parking, noise and other nuisance issues. We should not consider any further development until the code is changed.
2. The proposed development (The Retreat at Oak Creek) would be massive - the drawing submitted with the annexation application depicts 39 buildings with 893 bedrooms. The property's zoning designation allows even higher density, potentially 1,000 bedrooms or more.
3. This development will not offer the diverse housing options or affordable family housing that is mandated in the Comprehensive Plan and that Corvallis so desperately needs. Instead, there will be multi-story, "mega-dorm" buildings created solely for students. If future OSU enrollment declines as the economy improves, there will be little use for these dormitory-style buildings.
4. Even if residents bike, walk, or bus to classes, they will frequently use their cars, dramatically affecting parking and traffic. Imagine a potential 1,000 additional cars in southwest Corvallis, especially at the already congested and dangerous intersection of 35th Street & Western Boulevard.
5. Affordable housing has become increasingly difficult for families to find in Corvallis and data suggests they are moving to surrounding communities. The exodus of families with children has a devastating effect on our public schools and is one reason for the loss of \$4,500,000 - 19 teaching positions - from the 509J budget.
6. Corvallis lacks the infrastructure needed for OSU's escalating enrollment; building more and more high-density, off-campus student housing is not the answer.

Passage of Measure 02-80 will ***not*** result in development that preserves and enhances the quality of life in Corvallis. Your vote now may be your only chance to be heard on this issue.

Please vote NO on Measure 02-80

www.responsibledevelopmentcorvallis.com

*(This information furnished by
 Responsible Development Corvallis)*

The printing of this argument does not constitute an endorsement by Benton County, nor does the county warrant the accuracy or truth of any statement made in the argument.

CITY OF CORVALLIS

MEASURE 02-81

BALLOT TITLE

Caption:

U.S. Constitutional Amendment Addressing Artificial Entities' Personhood and Campaign Contributions

Question:

Shall the City urge elected representatives to support Constitutional Amendment denying artificial entities' personhood and rejecting money as speech?

Summary:

This non-binding advisory question regards legal decisions that affect campaign financing of elections at all levels (city, county, state, and nation), based on the Supreme Court interpretation of the U.S. Constitution. This question asks whether the City should inform elected officials that the voters in Corvallis believe United States Constitution should be amended to limit constitutional rights to natural persons only, and to specify that campaign contributions and money spent in election campaigns is not speech protected by the First Amendment. Decisions by the U.S. Supreme Court currently afford inalienable constitutional rights to artificial entities, such as corporations, limited liability companies, and unions. The Court also currently extends the free speech provision of the First Amendment to the expenditure of money by both natural persons and artificial entities in election campaigns. The proposed amendment would guarantee the ability of governments at all levels to limit the privileges of artificial entities. The amendment would guarantee the ability of governments to regulate, limit, or prohibit contributions and expenditures for election campaigns.

EXPLANATORY STATEMENT

This advisory question asks the voters of the City of Corvallis whether the Mayor and City Council should convey the following message to the elected federal, state, and county representatives of the citizens of Corvallis, regarding a proposed amendment to the United States Constitution:

“The citizens of Corvallis, recognizing that corporations are not natural persons, and money is not speech, support a Constitutional amendment that includes the following provisions.

- 1a. The rights protected by the Constitution of the United States are the rights of natural persons only.
- 1b. Artificial entities, such as corporations, limited liability companies, unions and other entities established by law shall not have inalienable rights under this Constitution and are subject to regulation by laws enacted by the people and their representatives.
- 1c. The privileges of artificial entities shall be determined by laws enacted by the people and their representatives, and shall not be construed to be inherent or inalienable.
- 2a. Government at all levels shall:
 - i. regulate, limit, or prohibit contributions, including a candidate's own contributions and expenditures, for the purpose of influencing, in any way, the election of any candidate for public office or any ballot measure.
 - ii. require that all permissible contributions and expenditures be publicly disclosed within a reasonable time limit to be prescribed by law.
- 2b. The judiciary shall not construe the spending of money to influence elections and public policy, to be speech under the First Amendment.
- 2c. Nothing contained in this amendment shall be construed to abridge the freedom of the press.”

Pursuant to Corvallis Municipal Code Chapter 1.10, this measure is an advisory question. If approved by a majority of the voters, this measure does not have the force of law.

(Submitted by the City of Corvallis)

CITY OF CORVALLIS

MEASURE 02-81

ARGUMENT FOR:

"We need a level playing field...a limit on the flow of money... corporations are not people."
— Senator John McCain, PBS News Hour, June 14, 2012

Upset about Super PAC millions spent trying to influence how you vote? Feel your vote doesn't count? Care about your community and its independent businesses? Vote "yes" on 02-81.

Our government is not functioning as our country's founders intended. Over the years, Supreme Court justices, many with apparent conflicts of interest, have gradually created legal doctrine that corporations are people with constitutional rights, and that spending money in politics is equivalent to free speech. Consequently our senators and representatives must raise huge amounts of money to be re-elected, making them more likely to be influenced by wealthy individuals and corporate entities than by everyday people.

Our country's founders never mentioned corporations in the constitution and saw corporations as potentially dangerous to democracy. They placed extremely tight controls over corporate charters. But now multinational and giant corporations, along with super-wealthy individuals, have become the governors rather than the governed.

Court-granted constitutional rights enable large corporations to enter a community and squeeze out established small businesses, regardless of community preferences. Smaller local businesses care about their communities and provide economic stability by keeping money circulating locally.

The downward spiral of our economy in the last decade was caused in part by mega-corporate influence on international trade agreements and securities regulations. Widespread outsourcing of jobs and very risky investment practices followed, pushing us to the brink of a major depression.

Your voice in our democracy is being drowned out. Your control over the local community is being usurped by wealthy individuals and mega-corporations that rig the system. This is your chance to express your opinion! Vote "yes" and join communities nationwide working to restore our democracy by calling for a 28th constitutional amendment stating that corporations are not people and money is not speech. See <http://movetoamend.org/or-corvallis>.

NO ARGUMENTS AGAINST THIS MEASURE WERE FILED

(This information furnished by Corvallis Area Move to Amend)

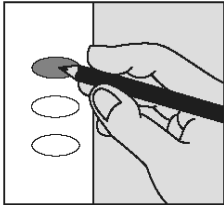
The printing of this argument does not constitute an endorsement by Benton County, nor does the county warrant the accuracy or truth of any statement made in the argument.

CHECK YOUR BALLOT AND FREQUENTLY ASKED QUESTIONS

HOW TO CAST YOUR BALLOT

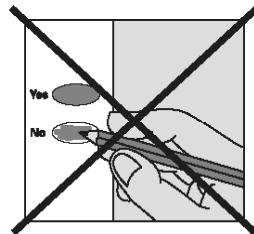
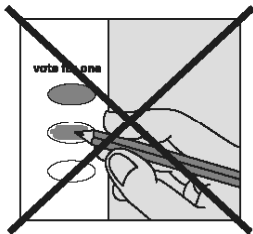
check your ballot!

Use a pen or pencil to fill in the ovals next to your choices.



If you vote for more candidates than allowed, or if you vote **both** Yes **and** No on a measure, it is called an overvote.

Your vote **will not count** for that candidate or measure.



You do not have to vote on all contests. Those you do vote on will still count.

Contact Benton County Elections to request a replacement ballot if:

- you make a mistake
- your ballot is damaged or spoiled
- you lose your ballot

Benton County Elections

Phone: (541) 766-6756
Fax: (541) 766-6757
TTY: (541) 766-6080
Email: bcelections@co.benton.or.us

1 866 ORE VOTE/673 8683
Se Habla Español
www.oregonvotes.gov

FREQUENTLY ASKED QUESTIONS

Q. How can I find out if my ballot has been accepted?

A. Call our office at 541 766-6756 or check the website www.oregonvotes.gov

Q. What do I do when a ballot for someone else is delivered to my home?

A. It is important that you DO NOT THROW THE BALLOT AWAY. Write on the envelope that the person is no longer at that address and PUT IT BACK INTO THE MAIL. Postage is not needed. Once our office has received the undeliverable ballot you will stop receiving them.

Q. I forgot to put my ballot in the secrecy envelope. Will you count my ballot?

A. Yes. We recommend that voters use the secrecy envelope. You can open the ballot return envelope, place your ballot in the secrecy envelope and reseal it. Write "Opened By Voter" along the portion that you sealed and sign your full name there as well. That way we will know that the voter was the one who opened the ballot and can count it. However, if your ballot comes back without a secrecy envelope, it will still be counted.

Q. How do you know I am the one who voted my ballot?

A. The signature on EACH ballot return envelope is verified. Elections staff compares the signature on your ballot return envelope with the signature on your Voter Registration Card. If the signatures do not match we will contact you to help us resolve the issue. **Remember:** Even a person with a Power of Attorney cannot sign your ballot. Only you can.

Q. When do election results become available and how can I find out what they are?

A. Election results are available on the Benton County Elections website at: www.co.benton.or.us/elections. First results become available between 8:20 PM and 9:00 PM on Election Night. Further results will be added as ballots are received and tallied. All ballots cast within Benton County will be counted and the results posted before the election staff leaves Election Night. However, ballots returned in other counties must be sent to Benton County for later tally and the election cannot be certified until all voters whose ballots were challenged have had an opportunity to respond to those challenges.

DON'T FORGET TO SIGN YOUR BALLOT

YOUR BALLOT MUST BE RETURNED NO LATER THAN 8 PM ON ELECTION NIGHT IN ORDER TO BE COUNTED.

POSTMARKS DO NOT COUNT

VOTER REGISTRATION, BALLOT INFORMATION AND CONTACTS

VOTER REGISTRATION AND BALLOT INFORMATION

Who is qualified to vote: In order to receive a ballot, voters must be registered to vote in their county of residence no later than 21 days prior to the election. However, if a registered voter moves within the State of Oregon, that voter can update his/her voter registration information and receive a ballot up until **8:00 PM on Election Day, which is November 6, 2012.**

Absentee Ballots: It is against the law to have anyone forward a ballot to you. Even the United States Postal Service will not forward a ballot. If you will be out of the area during the election period and would like to receive a ballot, contact our office and request that an "Absentee Ballot" be sent directly to you.

If you lose your ballot or make a mistake while voting it: If your ballot is lost, destroyed, damaged, or you made a mistake in marking your ballot, you may contact the Benton County Elections Office to request a replacement ballot. The replacement ballot will be mailed to you, as long as your request is received no later than the 5th day before Election Day. After the 5th day before the election, you may pick up a ballot by coming to the Benton County Elections Office.

If you have already mailed your original ballot before you realize you made a mistake, your ballot has been cast, and you are not eligible for a replacement ballot.

In order for your ballot to be counted it must be returned to any elections office or official ballot drop site in the State of Oregon, **no later than 8:00 PM Election Day, November 6, 2012.**

Postmarks DO NOT count!

Ballots must be returned enclosed in the official ballot return envelope and **signed by the voter** in order to be counted. Even people with Power of Attorney do not have authority to sign another person's ballot.

Use a **PEN OR PENCIL** to vote your ballot.

If you have other questions about voter registration, your ballot, or voting in Benton County you are encouraged to call 541 766-6756.

CONTACT INFORMATION

Benton County Elections Website

The website is an excellent source of information concerning voter registration, absentee voting, frequently asked questions, and links to other local, state, and federal election officials. You will also find election specific information such as election filings, results, voter turnout and this voters' pamphlet on our website www.co.benton.or.us/elections

Voters with Disabilities

If you need help voting because of a disability, contact the Benton County Elections Office. Deputized elections staff is available to assist you in casting a ballot; or ask about alternate voting formats.

Benton County Elections Office

Phone: 541 766-6756
TTY: 541 766-6080
Fax: 541 766-6757
Website: www.co.benton.or.us/elections
Email: bcelections@co.benton.or.us

State of Oregon

Phone: 1 866 673-8683
Website: www.oregonvotes.gov

Información en Español

Para mas información sobre las elecciones en el condado de Benton

llame al: 541 766-6756
TTY: 541 766-6080
limitaciones auditivas
o al numero gratis: 1 866 673-8683

Condado: www.co.benton.or.us/elections
Estado: www.oregonvotes.gov

Se Habla Español

**Benton County
VOTERS' PAMPHLET
General Election
November 6, 2012**

Elections Office Open 7:00 AM to 8:00 PM Election Day

PUBLISHED BY
THE BENTON COUNTY CLERK



Election Questions?
Benton County Elections Office
Phone: 541 766-6756
TTY: 541 766-6080
Fax: 541 766-6757
Website: www.co.benton.or.us/elections
Email: bcelections@co.benton.or.us