



OFFICIAL VOTERS' PAMPHLET

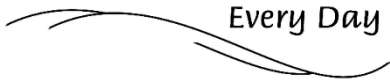
**GENERAL ELECTION
NOVEMBER 4, 2014**

The publication and distribution of this pamphlet is provided by the County Clerk at the direction of the County Commissioners. The candidate and measure information within was provided by candidates, cities, districts and other interested parties that chose to participate in this portion of the election process.

Benton County:

At Your Service

Every Day





BOARD OF COMMISSIONERS

205 NW Fifth Street
P.O. Box 3020
Corvallis, OR 97339-3020
(541) 766-6800
FAX (541) 766-6893

Dear Benton County Voter:

Tuesday, November 4, 2014, is General Election day in the United States. As a registered voter, you will have an opportunity to cast a ballot on a variety of federal, state, county, district, and city contests and measures. The contests and measures on your ballot are dependent on the districts in which you reside.

The Board of Commissioners directed the County Clerk to publish this **Benton County Voters' Pamphlet** to provide voters with information regarding this election. This pamphlet is also available on the election website at www.co.benton.or.us/elections.

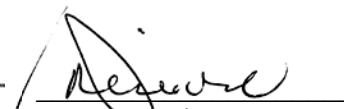
Please note: All ballots must be received no later than 8:00 p.m. on Election Day, Tuesday, November 4, 2014. You can mail your ballot or drop it at one of the ballot drop box locations listed on page 24 of the Benton County Voters' Pamphlet.

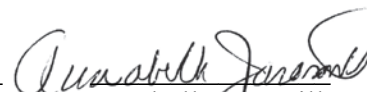
Included with your ballot, you will find information about obtaining a replacement ballot, if needed, and instructions for casting your ballot. We hope this information will help you become better informed about the issues in this election as you prepare to make your decisions.

If you need additional information or assistance, you may reach the Elections Office by phone: (541) 766-6756; email: bcelections@co.benton.or.us; or in-person in the basement of the historic Benton County Courthouse, 120 NW 4th Street, Room 13, in Corvallis.

Sincerely,


Linda Modrell
Chair


Jay Dixon
Commissioner


Annabelle Jaramillo
Commissioner

Please, exercise your rights and VOTE.

TABLE OF CONTENTS

2	Letter from the Commissioners
4	County Commissioner, Position 1: Anne Schuster, Democrat County Commissioner, Position 1: Jerry J. Jackson Sr., Republican
5	Sheriff: Scott Jackson
6	City of Adair Village Mayor: Bill Currier
7	City of Albany Mayor: Sharon Konopa City of Albany Mayor: Jim Clausen
8	City of Albany City Council Ward 1-A: Dick Olsen City of Albany City Council Ward 1-A: Kevin P. Manske
9	City of Corvallis Mayor: Biff Traber
10	City of Corvallis City Council Ward 2: Roen Hogg City of Corvallis City Council Ward 3: Zachariah L. Baker
11	City of Corvallis City Council Ward 4: Barbara Bull City of Corvallis City Council Ward 5: Mike Beilstein
12	City of Corvallis City Council Ward 6: Joel Hirsch City of Corvallis City Council Ward 6: Steve Redman
13	City of Corvallis City Council Ward 7: Bill Glassmire City of Corvallis City Council Ward 7: Paul Woods
14	City of Corvallis City Council Ward 8: Tracey Yee City of Corvallis City Council Ward 8: Carl Price
15	City of Corvallis City Council Ward 8: Frank Hann
16	City of Philomath City Council: Tamera L. Hull
17	City of Corvallis Measure 02-88 Ballot Title and Explanatory Statement
18	City of Corvallis Measure 02-88 Arguments in Favor
19	City of Corvallis Measure 02-88 Arguments in Favor
20	City of Corvallis Measure 02-88 Argument in Opposition
21	Linn-Benton Community College Measure 22-130 Ballot Title and Explanatory Statement
22	Linn-Benton Community College Measure 22-130 Arguments in Favor
23	How to Cast a Ballot and Frequently Asked Questions
24	Benton County Official Ballot Dropsites

PLEASE NOTE: Some candidates did NOT submit a statement

Candidate Statements and Measure Arguments in the Voters' Pamphlet are optional campaign filings that require payment at the time of submission.

For a complete listing of all candidates and offices, please go to the Benton County website at:

www.co.benton.or.us/elections

Candidate statements are printed as submitted. Benton County does not correct punctuation, grammar, syntax errors or inaccurate information.

Information provided in statements or arguments submitted by a candidate, a political party, an assembly of electors or a person supporting or opposing a measure have not been verified for accuracy by Benton County.

Benton County Elections Office

Phone: 541-766-6756 * Fax: 541-766-6757

Website: www.co.benton.or.us/elections * Email: bcelections@co.benton.or.us

BENTON COUNTY COMMISSIONER



**ANNE
SCHUSTER**
Commissioner
Position 1

Occupation: Retired

Occupational Background: Research Scientist at North Carolina State University, University of Nebraska, Oregon State University

Educational Background: University of Nebraska, Ph.D., 1982

Prior Governmental Experience: Chair, Corvallis School Board; Oregon School Boards Association; Linn Benton Lincoln Educational Services District Budget Committee; Co-Founder Youth Mental Health Coalition; Benton County Solid Waste Advisory Committee, Benton County Local Advisory Committee for Inter Health Network-Coordinated Care Organization; Host for Leadership Corvallis; Steering Committee member for: Corvallis Sustainability Coalition, Oregon Green Schools & Sustainable Oregon Schools Initiative

I believe in: strong communication, transparency, listening, common sense, thorough research, & collaboration.

My priorities are:

A Vital Economy

Retain and support existing businesses
Promote new business in urban and rural settings
Support work force training for the 21st century

Health and Safety for All

Expand availability of affordable and safe housing
Improve access to physical and mental health services
Maintain high air and water quality standards
Prepare communities to respond effectively to disasters

Agriculture and Natural Resources

Promote soil and water conservation practices
Encourage sustainable farming and locally grown products
Support alternative forms of energy and transportation
Increase climate change awareness and mitigation

Look to the Future: www.anneschusterforcommissioner.com

Endorsed by:

Jay Dixon, Benton County Commissioner
Sharon Konopa, Mayor of Albany
State Representative Sara Gelsler
John Haroldson, Benton County District Attorney
David Buchanan, Co-owner of Tyee Wine Cellars and Buchanan Family Century Farm
Margy Buchanan, Co-owner of Tyee Wine Cellars and Buchanan Family Century Farm
Oregon League of Conservation Voters
Sierra Club
Linn-Benton-Lincoln Central Labor Council

(This information furnished by Anne Schuster)



**JERRY J.
JACKSON, SR.**
Commissioner
Position 1

Occupation: Oregon Licensed Investigator; Code Enforcement Officer, Polk County

Occupational Background: Polk County Community Development Manager; Community Service/Work Release Coordinator; Business Owner; US Army Veteran

Educational Background: Ford Family Foundation Leadership Course; Oregon State University, Political Science; AA, Linn-Benton Community College; Trend College, Certificate in Travel and Tourism Management; ASFPM Certified Floodplain Manager, Certificate

Prior Governmental Experience: Current Chair, City of Philomath Budget Committee, Former Philomath City Council President; Budget/Finance/Administration Board and Ordinance Committees/Budget/Police Committee; Past Polk County Community Development Manager; Community Service/Work Release Coordinator; School Board Member, St. Mary's School

Volunteer Activities:

Benton County Republican Central Committee, Past Chair
Community Involvement, Coaching and Provided Leadership as a Cub Scouts Leader

REAL GOVERNMENT EXPERIENCE

It is vital to have a Commissioner who understands government and has the experience to make sound decisions. Working with Oregon Land Use Laws as a Code Enforcement Officer gives me the tools and understanding to make these decisions.

REPRESENTATION FOR ALL CITIZENS

Sustainability

The Willamette Valley is blessed with many natural resources. It is time to let the natural resources of Benton County return prosperity to the community in a responsible and sustainable manner.

Environment

Benton County is known for being at the forefront in protecting our environment. I will continue Benton County's great tradition for now and for future generations.

Economics

Benton County has every element to thrive economically. Government, through reasonable taxes, regulation, and a can do attitude can ensure a climate of success and vibrancy. I will do that!

Endorsements: Rocky Sloan – Mayor, Philomath; Bill Currier – Mayor, Adair Village; Van Hunsaker – Former Mayor, Philomath; Charline King – Former Benton County Commissioner; Angie Baca, Philomath City Councilor; Oregon Black Political Convention

www.electjerryjackson.com

(This information furnished by Jerry J Jackson Sr / Elect Jackson Commissioner (PAC))

BENTON COUNTY SHERIFF



SCOTT
JACKSON
Sheriff

Occupation: Benton County Sheriff

Occupational Background: Benton County Sheriff's Office; Deputy, Corporal, Sergeant, Training & Accreditation, Lieutenant / Jail Commander, Undersheriff, and Sheriff. 1995 to Present

Philomath Reserve Police Officer from 1996 to 2001

United States Army from 1983 to 1991

Oregon Army National Guard from 1995 to 2008

Educational Background: BS in Management and Communications, Western Baptist College.

Executive Certificate in Police and Corrections, Department of Public Safety Standards and Training (DPSST); FBI National Academy Graduate, Quantico VA; Pacific Program; Oregon Executive Development Institute; National Sheriff's Institute; Command College, Oregon State Sheriff's Association

Prior Governmental Experience: Arizona Department of Corrections; Benton County Deputy Sheriff's Association; Certified trainer with Benton County Sheriff's Office / Department of Public Safety Standards and Training (DPSST), Willamette Criminal Justice Council Chair, Juvenile Justice Compliance Sub-Committee.

Community Involvement: United Way, CARDV, Leadership Corvallis, Rotary, Boys & Girls Club, Sheriffs Foundation

Representative Sara Gelser, Commissioner Jay Dixon, Linda Modrell and Annabelle Jaramillo, Biff Traber, Curt Wright, and many more urge you to vote for Scott Jackson for Benton County Sheriff.

*"We have a superb Sheriff's Office in Benton County. With Scott Jackson at the helm, it can only get better yet."
~Curt Wright*

*"Sheriff Scott Jackson is dedicated, skilled Sheriff with strong support from his organization and the community. Scott serves his community well both professionally and personally as a community volunteer".
~Biff Traber*

Please give me your vote so that I may continue to serve you.

Sheriff Scott Jackson

(This information furnished by Scott Jackson)

CITY OF ADAIR VILLAGE MAYOR



**BILL
CURRIER**
Mayor

Occupation: Business Owner; Computer Networking Consultant

Occupational Background: Police Officer

Educational Background: Southern Oregon University, Computer Information Systems; Pacific Union College, Business

Prior Governmental Experience: Adair Village Mayor; Adair Village Public Safety Commission; Willamette Criminal Justice Council; Corvallis Area Metropolitan Planning Organization; Cascades West Area Commission on Transportation; League of Oregon Cities Board of Directors

RE-ELECT BILL CURRIER FOR CONTINUED PROGRESS

Adair Village has come a long way in recent years. Thanks to your support and input we have achieved many of our goals. The most notable is that we have lowered our costs to run the City while continuing to improve service levels.

Because of the efforts of our City Administration staff and the amazing accomplishments of our very capable and committed Public Works staff we have greater confidence in our aging water and wastewater infrastructure.

The bottom line is that you, as a resident, should be able to count on your city government to provide essential public utilities and public safety services. It has been an honor to serve as your Mayor and help bring about this certainty.

With your vote I will continue to lead the City, working on, and with, the all-volunteer City Council to make the tough choices that are necessary to ensure that Adair Village continues to be a great place to live and raise a family.

Current Top Priorities

- Community oriented growth
- Water infrastructure challenges
- Improved public safety services
- Enhanced local amenities

www.BillCurrier.com

STRONG & EFFECTIVE LEADERSHIP

(This information furnished by Bill Currier)

CITY OF ALBANY MAYOR



**SHARON
KONOPA**
Mayor

Occupation: Mayor of Albany

Occupational Background: Event coordinator; small business owner

Educational Background: South Albany High School diploma

Prior Governmental Experience: • Mayor of Albany; January 2009-present • Albany City Councilor; January 1997-Dec. 2008 • Oregon Passenger Rail Leadership Council; appointed by the Governor, 2011-present • Willamette Criminal Justice Council; board member-present • Central Albany Revitalization Area Board and Agency; 2001-present and former Chair of Agency • Cascade West Council of Governments; serving Senior/Disability Services, Meals on Wheels, Loan Program Advisory Committee—16 year board member and executive committee • Mayor's Business Ready Task Force; adopted • Community Development Commission, 2013-present • Linn County Ten-Year Homeless Plan; Past Committee Co-chair, current update committee • Numerous committees/task forces-check out her web site for more information.

Government- Partnered Organizations:

- Albany Millersburg Economic Development Corporation; board member
- Albany Downtown Association; liaison board member
- Albany Partnership for Housing and Community Development; board member and executive committee

Sharon Konopa has diligently worked hard to support Albany's economy and during the nation's worst economic downturn. She kept Albany moving forward as a vibrant community with new jobs, businesses and great places to visit like Talking Water Gardens.

Sharon Konopa is very devoted in promoting Albany for visitors to enjoy and the results are tourism revenue is the highest amount in Albany's history.

Currently Sharon Konopa is Mayor of Albany and is a full time community volunteer. She has devoted for many years her time and energies for the citizens of Albany.

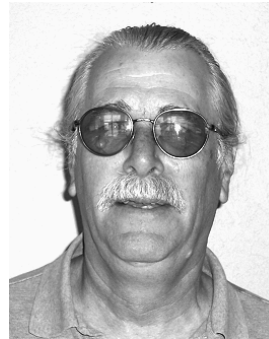
Have you ever noticed that most political candidates run their campaign on promises, and seem to say about the same thing? Sharon Konopa is not your usual candidate. She runs her campaign on what she has accomplished, and she has an 18 year record to prove it.

"Thank you Albany voters for your years of support in helping me make Albany a great place to live".....Sharon Konopa

Learn more about her experience and accomplishments at: www.sharonkonopa.org

(This information furnished by Albany Friends of Sharon Konopa)

The above information has not been verified for accuracy by Benton County.



**JIM
CLAUSEN**
Mayor

Occupation: Machinist/programmer/fixture design

Occupational Background: Machinist, Department lead, Real Estate - stressing accurate outcomes and customer interaction.

Educational Background: Bellflower High - diploma

Prior Governmental Experience: Americans for Prosperity - Chapter chair for grassroots government education group; **Petition coordinator** - Coordinating gathering of signatures for local debt control petition; **Attended** majority of City Council meetings in last 4 years, speaking often.

Accountability. Accountability is what our city lacks. Accountability is what our city needs.

Water/sewer rates continue to rise. Water/sewer rates rose approximately 6% this year. The city plans this every year for the next 6 years meaning bills could double. People traveling back and forth tell me they pay less for water in the desert state of Arizona. Why? Because Albany has no accountability in the system. I'll work to stop the rapid growth of water/sewer rates.

We were asked to approve a \$20 million Police/Fire Station bond - without seeing plans. Blind voting - having to "pass it to see what's in it". I'll change that. I'll work to make sure buildings meet basic needs instead of becoming past official monuments.

Millions have been spent on urban renewal, yet a short walk downtown shows many vacant commercial properties. The present Mayor brags about urban renewal creating jobs - yet the only evidence of any real job created was the urban renewal director job - at total cost approximately \$250,000/yr.

We need an agreed upon list of essential City functions and consider non-essentials to stop funding. We should adopt the practice of determining ACTUAL costs for essential City services like water/sewer. Present practice has resulted in ever increasing costs of local governance.

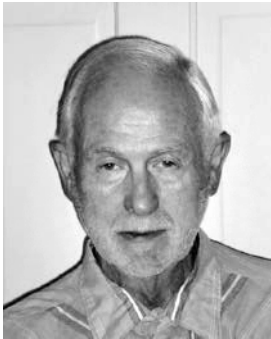
Those in office now appear blind to increasing costs. We can't fix these problems without being able to see them. I'll work to stop the upward spiral.

I see the issues, I'll work on solutions. Tough decisions need to be made. I'll help the Council make those tough decisions.

(This information furnished by Jim Clausen)

The above information has not been verified for accuracy by Benton County.

CITY OF ALBANY CITY COUNCIL



**DICK
OLSEN**
Council
Ward 1-A

Occupation: Retired

Occupational Background: Chemical Engineer at Fed. Bureau of Mines Albany Research Center

Educational Background: BA Pacific Lutheran U, PhD. Oregon State U.

Prior Governmental Experience: Albany Councilman 1973 -76, 77 -78, Albany Mayor 79-80, Albany Councilman 1999 to 2002, 03 to 06, 07 -10, 2011 to present.

When things need doing, Olsen gets after them:

Neighborhood rezoned from apartment house to single family---'71; Downtown Carnegie Library (built 1914) kept open.---'73; Historic Monteith House (built in 1849) bought by City and preserved.---'74; Prevented urban renewal, designed to demolish & redevelop downtown.---'79; Ambulance service returned to its rightful place in City Fire Department.---'79; Three downtown historic districts formed.---'80; Central School (built in 1915) preserved from demolition. See web story.---'80; Carnegie Library again kept open and endowment fund initiated.---'90; Swanson Pool rebuilt and reopened as Cool Water Park.---2005; Central School again saved from demolition.---'05; Restoration of Carnegie Library nearing completion.---'14

These accomplishments helped keep Albany the unique, enjoyable place it is today.

Whats Important Now?

Great Neighborhoods: The City initiated a study to get your advice on city planning. I suggested the study be called "Great Neighborhoods". I support revisiting the Great Neighborhoods project. **We need grocery stores at the "Ray's" location in N. Albany and at the old Safeway location at Queen and Pacific.**

Zoning: Single family neighborhoods should be zoned as such. **I always advocate for single family zoning in single family neighborhoods.**

Urban renewal: Urban renewal has done great things for Downtown first street. Its time to be done with moratoriums and get going with the rest of the program.

Representation: Downtown Albany and the CARA Urban Renewal District should have at least one member who lives down town. **I'm it. Vote Olsen for City Council.**

I want to hear your concerns. E-mail me at rsolsen@proaxis.com or visit my web page at www.dicolsenforalbanycitycouncil.com

(This information furnished by Committee to Elect Dick Olsen to Albany City Council)



**KEVIN P.
MANSKE**
Council
Ward 1-A

Occupation: Small Business Owner, Retail & Training Courses

Occupational Background: Instructor, Department of Public Safety Standards and Training Academy and at ITT Technical Institute; Police Office, Albany Police Department

Educational Background: B.S. Law Enforcement, Western Oregon University; Benson Polytechnic High School

Prior Governmental Experience: Central Albany Revitalization Area Advisory Board Member

Community Experience: Assistant Scout Master with son's Boy Scout Troop; Member, Greater Albany Rotary Club; Member, Albany Area Chamber of Commerce, Takena Parent Teacher Club

Personal: Kevin has lived in the Albany Area for 20 years. He and his wife , Hedio, run their local business together and have two elementary aged children.

Kevin Manske for Albany City Council

"I love living in Albany. My children go to school here and my business is located here. I want to ensure that Albany has a stable foundation to grow and thrive."

-Kevin Manske

Jobs for Albany

We must bring new jobs to our area and protect our existing jobs by not forcing employers to take their businesses out of town or shutting down entirely. This includes lowering local taxes, streamlining regulations and making sure our roads can transport goods and move consumers.

Fiscal Responsibility for Albany

We must provide stable funding for essential services (police, fire, roads). I believe this is our number one priority as a council.

Partnerships for Albany

I believe in a collaborative approach between city and county government that benefits all of us. We must work together for the common good.

Join Community Leaders – Vote Kevin Manske for Albany City Council!

"Kevin Manske will make the people of North Albany and downtown Albany his priority. He is a committed and hard-working individual who will work tirelessly for our community values."

Emerson Smoker Sr.

"Kevin Manske is a solid guy that will work hard for Albany and help keep the city growing and our neighborhoods safe."

Tim Mueller, Retired Linn County Sheriff

www.ElectManske.com

Authorized by the Committee to Elect Manske

(This information furnished by Kevin P. Manske)

CITY OF CORVALLIS MAYOR



**BIFF
TRABER
Mayor**

Occupation: Retired; Community leader - Corvallis City Councilor, Council Vice President, active in: Corvallis Rotary, United Way, Corvallis Sustainability Coalition, St. Vincent de Paul Food Pantry, Corvallis Housing First, and New Roots Housing

Occupational Background: Thirty years in computer systems industry as engineer, manager and executive. Eleven years of community leadership and volunteer service in United Way, Rotary, Boys & Girls Club, Leadership Corvallis

Educational Background: University of California Berkeley – BA CS/Math, MS IE/OR

Prior Governmental Experience: Two Term Corvallis City Councilor; Council Vice President; Benton County Charter Review Committee

Elect Biff Traber Mayor of Corvallis

As Mayor, I will lead the city through our current period of change preserving our quality of life and maintaining the city's financial stability.

Given your vote, I will focus on three main challenges:

Long-range fiscal stability

Grow existing tax base through new economic activity, new businesses and new jobs while maintaining a sustainable budget.

Cementing our OSU collaboration

Continue to solve OSU/City points of conflict while leveraging OSU expertise to the city's benefit.

Updating Vision 2020 and associated plans

Much has changed since Vision 2020 was written. We, as a community, need to develop an updated Vision 2040 document and updates to our Comprehensive Plan and other plans to reflect the changes.

As mayor, I will work with the council, city staff and the community as a whole to address these challenges. Working together, we will make Corvallis better.

Your vote for Biff Traber is a vote for an experienced, hard-working, collaborative leader of Corvallis.

Committed community leaders such as Julie Jones Manning, Charlie Tomlinson, R. Charles Vars, Jr., Mike Corwin, Kent Daniels, Commissioners Jay Dixon, Linda Modrell and Annabelle Jaramillo, Sheriff Scott Jackson, and many others urge you to vote for Biff Traber for Mayor.

Vote for Biff Traber for Mayor

(This information furnished by Biff Traber, Traber for Mayor)

The above information has not been verified for accuracy by Benton County.

CITY OF CORVALLIS CITY COUNCIL



ROEN HOGG
Ward 2

Occupation: Project Manager, Oregon Employment Department.

Occupational Background: Software Release Manager, Hewlett Packard; System Analyst, Oregon State University.

Educational Background: M.S., Montana State University; B.A., Bates College.

Prior Governmental Experience: Corvallis City Council; Urban Services Committee; Budget Commission; OSU-City Collaboration Steering Committee; Liaison to:

- Planning Commission
- Historic Resource Commission
- Downtown Commission
- Downtown Parking Committee
- Madison Avenue Task Force
- Majestic Theater
- da Vinci Days Festival

Focus on:

- **Neighborhood livability.** Homeowners, renters and students deserve a vibrant, attractive place to live, work and do business. Tackle noise, parking and traffic issues. Support community gardening, city parks and historic neighborhoods.
- **Community values.** Support community organizations, nonprofits, arts, culture, schools, diversity, sustainability and OSU-City collaboration.
- **Economic vitality.** Small business is vital for creating new jobs. Facilitate new businesses, grow existing businesses and recruit new companies.

Longtime Corvallis resident. Member First Alternative Co-op. Founding member Whiteside Theatre Foundation. Strongly support our local neighborhood associations which are vital for improving the livability of our historic neighborhoods.

I am running for re-election to protect and enhance our neighborhoods and our city. I will appreciate the opportunity to continue to represent you on the Corvallis City Council.

(This information furnished by Roen Hogg)



ZACHARIAH L. BAKER
Ward 3

Occupation: Public Policy Consultant

Occupational Background: Program Analyst, U.S. Department of Agriculture, Office of Budget and Program Analysis; Policy Associate, National Sustainable Agriculture Coalition and Organic Farming Research Foundation; Various public interest oriented policy and legal internships with organizations including the Harvard Prevention Research Center, National Wildlife Federation, Food and Water Watch, and the U.S. Department of Justice, Environment and Natural Resources Division.

Educational Background: University of Oregon School of Law, JD, 2014 (Environmental Law); Tufts University, BA, 2005 (Political Science and Community Health).

Prior Governmental Experience: Precinct Committeeperson

"Corvallis can and should lead the way to a more sustainable future." – Zach Baker

Corvallis is facing a number of economic, social, and environmental challenges. Yet, I'm confident that Corvallis can not only meet these challenges, but also lead the way for other cities experiencing similar challenges.

Every day I am reminded of the ingenuity and commitment to sustainability that our neighbors here in Corvallis bring to their endeavors. For example, some of our neighbors are working at the cutting edge of science developing renewable energy systems that will power us into the future, others are building a resilient local food system that will feed us into the future, and still others are creating the community connections that will sustain us into the future.

Our city government should encourage and match the innovative and forward-thinking nature of our neighbors. Corvallis has made some significant strides in this regard, but there is more to do. I look forward to the opportunity to contribute my skills, knowledge, and enthusiasm to this effort as a city councilor.

(This information furnished by Zachariah Baker)

CITY OF CORVALLIS CITY COUNCIL



**BARBARA
BULL**
Ward 4

Occupation: none

Occupational Background: Customer service, childcare, and teaching; various jobs related to state and local government planning at Lane Council of Governments, DLCD, and Benton County.

Educational Background:

- BA, Reed College (Mathematics)
- MS, Portland State University (Mathematics)
- Graduate coursework in Public Administration at University of Oregon

Prior Governmental Experience: Corvallis Committee for Citizen Involvement, Corvallis Budget Commission (liaison to CIP Commission)

Other Volunteer Activities: Leadership Corvallis graduate, Corvallis City Club, da Vinci Days Board of Commissioners, urban renewal campaign, AYSO referee, minor involvement in Prosperity That Fits and Corvallis Sustainability Coalition.

Working together toward a common goal with smarter government.

Our local government is for us to use to create the community we would like to live in. I would like to work with citizens to help our government be more effective and efficient in preserving and creating the physical and cultural city we want in a financially responsible way.

We need to work together to keep it together

We live in Corvallis because we like it here. However, we don't have the money to continue to do things the way we've been doing them. What should the City Council do about this? The answer depends on what the community wants, what it can and is willing to pay for, and who is willing to work together to make it happen.

What does our community want?

Over the next two years or more we will be asked this question in many ways. What do we want in a City Manager? What is our vision for our community? How do we plan our land development and infrastructure investments to realize our vision? What should the city pay for, and how? I would like to work with all components of this community to answer these questions.

How do we get there?

I would like to see our government do a better job informing residents about our choices, and help the Council turn community decisions into action.

(This information furnished by Barbara Bull)



**MIKE
BEILSTEIN**
Ward 5

Occupation: Chemist, retired

Occupational Background: 1978 to 2007 – nutritional and biochemical research at Oregon State University; 1977 to 1978 – research chemist, Johns Hopkins University; 1976 to 1977 – research chemist, Medical College of Virginia; 1973 to 1975 – US Peace Corps, high school teacher in Lesotho, Southern Africa

Educational Background: MA (1989), home economics, Oregon State University; BA (1973), biochemistry, Oregon State University

Prior Governmental Experience: Corvallis City Council, 1999-2000, 2007-2014

My core values are:

Participatory Democracy - *Decisions are made by the community, not leaders.*

I support citizen participation, a hallmark of Corvallis government.

Ecological Wisdom - *Take into account the needs of future generations.*

Bicycle/pedestrian amenities, transit and reducing automobile commutes are my highest interest.

Nonviolence – *People participate out of a sense of community, not from coercion.*

The goal of our community policing model is to maintain safe and livable communities.

Social and Economic Justice - *The needs of all people are met fairly.*

The library, parks, code enforcement, housing assistance, social services and transit are essential services, just as much as sewer, water, police and fire protection.

The global climate catastrophe needs to be the first priority of all citizens and all levels of government. For Corvallis, this means smart economic development that discourages the automobile culture and commuting and meets the needs of residents fairly and efficiently. We must focus on reducing use of non-renewable resources and protection of the natural environment and services that make our community "livable."

"More", "Bigger" and "Wealthier" are not the answers we need. Can we have **Prosperity without Growth? Enough is Enough!**

As we hire a new City Manager, set goals for future years and start revising our land use documents, I am counting on the collective wisdom of our community to make progress toward a more attractive and sustainable city. Please join me in this work.

(This information furnished by Mike Beilstein)

CITY OF CORVALLIS CITY COUNCIL



**JOEL
HIRSCH**
Ward 6

Occupation: Recording Artist, Performing Artist, Producer (Music), Entrepreneur, City Councilor

Occupational Background: Professional Musician: recording, performing, composing 40 years, New York City, Los Angeles, Detroit, Corvallis; 1-800-DENTIST, California, Rhode Island: Executive Officer, Marketing for dental industry including commercial production for TV, radio, and print, dental practice management, sales, and operation of 100 seat call center; HYDROTHERMIC FLOTATION SYSTEMS, INC. California: Owner, manufacturer, distributor of medical equipment. Esalen Institute, Big Sur, CA: Supervisor organic farm; Workshop facilitator (and participant)

Educational Background: California Institute of the Arts; California State University, Northridge; Central Michigan University; Extensive world travel.

Prior Governmental Experience: Corvallis City Council Ward 6 2009-2014. Serving all 3 terms on the Administrative Services Committee, which facilitates City Finance, and deals with Economic Development, the Property Maintenance Code, the Transportation Maintenance Fee, to the Turkey Ordinance & bag ban. As Council Liaison I have served all three terms on the Parks and Recreation board (PNARB), Civic Beautification and Urban Forestry Commission (CBUF), and the Public Art Selection Commission. Current liaison assignments include Arts & Culture Commission, and Sister Cities. Past assignments were Visit Corvallis (Corvallis Tourism Board) and the daVinci Days board, (both 2 terms).

Council must again hire a new City Manager, and next term the OSU Campus Master Plan is up for renewal. With so many new Councilors next term, my fourth term on the Council will help to insure that we meet the challenge of Oregon State's future growth plans with experience, wisdom, and perspective. We must protect our community, its feeling and its values.

I am a champion of the City's overarching goals – Sustainability, Diversity, Citizen Involvement, and Cost Effectiveness – which frame, guide and inform all City actions and all Council Goals.

To the many citizens who have so enthusiastically encouraged me to run again, it is truly an honor. I thank you for voting, and for re-electing me.

(This information furnished by the Committee to re-elect Joel Hirsch to Corvallis City Council)

(This information furnished by Joel Hirsch)



**STEVE
REDMAN**
Ward 6

Occupation: Managing Principal Broker, Windermere Willamette Valley Real Estate

Occupational Background:

- 30 years in Real Estate, Banking & Finance
- 11 years as a Small Business Owner
- 6 years Teaching in Public K-12 Education
- 4 years of U.S. Military Service

Educational Background: Oregon State University, B.S., Political Science, 1984

Prior Governmental Experience:

- Corvallis City Council Candidate, Ward 6, 2012
- Benton County Board of Property Tax Appeals, Co-Chair, 2013-present
- Benton County Democrats, Precinct Committee Person

Community Service:

- Leadership Corvallis, 2012 Graduate
- Boys & Girls Club of Corvallis, Past Board Member
- Corvallis Elks Lodge, Finance Committee
- Rotary Club of Corvallis, Corvallis Half-Marathon
- OSU, College of Business, Career Interviews

Family: 2 Daughters - Jessica (OSU '12); Victoria (OSU '15)

Working Hard for Ward 6

I love Corvallis! This wonderful City is my home and I want to ensure that it remains a special place for us all. My neighborhood priorities include livability, traffic and parking issues. My city wide priorities include working to diversify and strengthen the local economy, ensure public-safety, providing affordable housing and protecting the environment. I am also a big supporter of our library and the arts.

There is no doubt that our local government will have many difficult decisions to make in the next few years when it comes to achieving a sustainable budget. My core political beliefs are that local governments have the responsibility to operate efficiently and transparently. Effective common sense actions will have to be taken that include establishing community priorities and funding them accordingly.

I offer citizens of Ward 6 an opportunity to elect new leadership that will bring a fresh perspective and help foster a spirit of cooperation and innovation. I have the commitment, passion and experience for the job. I would appreciate your vote.

Elect STEVE REDMAN for Ward 6

(This information furnished by Steve Redman)

CITY OF CORVALLIS CITY COUNCIL



**BILL
GLASSMIRE**
Ward 7

Occupation: Retired
Occupational Background: Teacher, computer programmer, Price Creek Bakery
Educational Background: BS, MIT; PhD, Stanford
Prior Governmental Experience: none

Please vote for me for the Corvallis City Council. For several years Ward 7 has had thoughtful and responsive representatives to the Council, and I would be honored to continue that tradition.

The 2015-16 Council will make far-reaching decisions, including hiring a new City Manager and adopting the OSU District Plan. In those decisions, and in all the Council's work, I will advocate strongly for the City's overarching goals of citizen involvement, cost efficiency, diversity, and sustainability.

As Councilor, my goals for 2015-16 will be:

- Involve concerned community members directly in decision-making discussions
- Support good-neighbor relationships between City and University
- Encourage sustainability practices city-wide
- Maintain a balanced budget while controlling costs for lower-income citizens

I am particularly concerned about sustainability. Corvallis' official sustainability goals are performance standards for City government (<http://www.corvallisoregon.gov/index.aspx?page=211>), but to me, sustainability is a matter for the entire community, not just government. I believe that sustainability and economic vitality can be complementary goals, and as Councilor I will work to implement a sustainable and economically vibrant community.

Further, I will be an agent for cooperation on the council. The decisions facing the 2015-16 Council may be difficult, and it will be extra important to listen well and to work together.

Ask yourself: if you were a Councilor, how would you decide your position on questions of policy and procedure? My goal will be positions which work for Corvallis and which are supported by the citizens. To that end, I will engage in discussion with constituents and fellow councilors, with a lot of listening on my part; gather pros and cons; advocate for the best course of action I can find; and vote accordingly.

I welcome your questions, your ideas, and your conversation. Let's work together toward an even better Corvallis. Thank you.

(This information furnished by Bill Glassmire For Ward 7)

The above information has not been verified for accuracy by Benton County.



**PAUL
WOODS**
Ward 7

Occupation: Electrical Engineer, Research and Development, ON Semiconductor
Occupational Background: Electrical Engineer, 22 years
Educational Background: Master of Science, Electrical Engineering, Brigham Young University
Prior Governmental Experience: Planning Commission; Airport Commission

Please vote for Paul Woods for City Council from Ward 7.

I'm ready to be fully engaged in the City Council. This is important because in the next Council term several pivotal issues will be decided, including hiring a new City Manager, overhauling the OSU District Plan, and the Comprehensive Plan for the City. I am positioned to get to work quickly as I have been an active member of the community for over twenty years and directly involved with City government for the past few years. I have followed Council activities closely, even listening to podcasts of Council meetings while I walk to work.

I feel that the Council sometimes takes on topics that are best left to other bodies, while neglecting important local issues. While some local issues may seem boring, they are important and addressing them is the reason I would like to serve on the Council.

Our property tax base declined drastically when Hewlett-Packard shrank causing the City to rely on operating levies to balance the budget. Meanwhile, the growth of Oregon State University has put a strain on housing, transportation and parking. Fixing the Comprehensive Plan and the OSU District Plan will go a long way to fixing these problems.

Even with the problems, we can make lemonade out of lemons: I support homegrown economic development, especially by encouraging start-ups coming from OSU research and innovation, as a means of bolstering and diversifying our tax base, replacing what we lost from HP. Our goal should be for the City to become fiscally sustainable and not require continued operating levies.

This is an exciting and critical time for the City and I am ready to represent you on the City Council. Please vote for me on November 4th.

(This information furnished by Paul Woods)

The above information has not been verified for accuracy by Benton County.

CITY OF CORVALLIS CITY COUNCIL



**TRACEY
YEE**
Ward 8

Occupation: Classification and Compensation Manager at Oregon State University, Office of Human Resources

Occupational Background: Human Resources, 6 years - OSU; Operations Management, 15 years - HP; Program Direction, 3 years - Community Outreach, Inc.; Employment Specialist, 1.5 years - Community Services Consortium

Educational Background: BA, Social Science - Michigan State University

Prior Governmental Experience: Precinct 8 Committeeperson, Benton County Democrats; Volunteer City Social Services Allocation Committee

I am committed to improving neighborhood involvement, creating a well-educated and competitive workforce, and maintaining our quality of life in Corvallis. Having worked in the corporate world, local community service organizations, and now at our local university, I understand what is important to our local economy and to building a stronger future for our families and children. I will effectively advocate for open and accessible government that maintains our city's special character and flavor by helping it grow sensibly. Most importantly, I am committed to listening to you and fighting for the issues most important to you.

(This information furnished by Tracey Yee)

The above information has not been verified for accuracy by Benton County.



**CARL
PRICE**
Ward 8

Occupation: Computer Engineer, ON Semiconductor

Occupational Background: United States Marine Corps (Honorable Discharge, Disabled Veteran); Computer Engineer with various companies including:

- Hewlett-Packard
- Agilent
- Aptina LLC
- ON Semiconductor

Educational Background: Oregon State University for both undergraduate and graduate studies in Computer Engineering

Prior Governmental Experience: None

As the new year rolls around, Corvallis is faced with number of important issues, which I would like to represent Ward 8 in addressing.

The first task facing the City Council is finding and hiring a new city manager. I believe the City Council needs to listen to the citizens and hire a City Manager that will work for Corvallis and allow us to grow while maintaining the quality of life in the city we have all come to love. This task is especially important, since a good choice of City Manager will effect how many of the other issues the city faces in the next few years will be handled by the city staff.

The next issue I see the Council needing to address is getting the city fiscally stable. Currently, the city keeps dipping into levies to provide services, placing a rising burden on the citizens of Corvallis at a time when their personal financial situations are static, placing an increasing burden on the citizens of Corvallis. The council needs to work at bringing in economic growth to offset the industry that has been lost, and bring balance back to the tax base.

The next Council will also face new negotiations with OSU and a new OSU master plan. The Council needs to act as a representative for the citizens of Corvallis, and ensure the master plan is formed with the interests of Corvallis as a whole.

Please vote for me to represent Ward 8 on the Corvallis City Council.

(This information furnished by Carl Price)

The above information has not been verified for accuracy by Benton County.

CITY OF CORVALLIS CITY COUNCIL



**FRANK
HANN**
Ward 8

Occupation: For the past 5 years, I have been the co-owner of Encore Physical Therapy, where I am a physical therapist.

Occupational Background: For 5 years, I worked for a county government in Maryland in a planning and grant development program capacity; I later worked in residential and commercial renovation. I have worked as a physical therapist for over 18 years in both Corvallis and Albany.

Educational Background: I received my Bachelors degree in History and Social Studies from Elizabethtown College, PA, in 1976, and returned to school in 1991 for a Masters and a Doctorate of Physical Therapy at Shenandoah University, VA.

Prior Governmental Experience: Locally, I recently completed my 9th year on the Corvallis Planning Commission as vice chair and chaired the Land Development Hearings Review Board; I also served on the Neighborhood Planning Committee of the Collaboration Project, and the Technical Advisory Team. And, as stated above, I worked in government in Maryland.

Dear Friends, Family, and Neighbors of Ward 8,

My family relocated to Corvallis in 1997 to raise our four daughters and have never regretted it. I actively volunteer in sports, education, theater, and free health clinics.

Corvallis is at a crossroads. The future holds bright promise, but this requires responsible, reasoned, and experienced leadership on our city council. We need to develop effective plans to deal with the interdependent issues of economic vitality, housing, infrastructure, and the impact of OSU's growth. I believe my background, experience, and passion for Corvallis will make me effective in working with the other councilors and with citizens to strengthen and preserve the characteristics of our city we hold dear.

Further, I will work diligently for efficient use of financial resources, economic vitality, inclusive citizen participation, and transparency in council deliberations. And I will ask the sometimes difficult questions necessary for the council to make informed decisions in the best interests of our community. Thank you for your vote.

(This information furnished by Frank Hann)

CITY OF PHILOMATH CITY COUNCIL



**TAMERA L.
HULL**
Council

Occupation:

- Homemaker

Occupational Background:

- Managed corporate communications, public relations and publicity for a multi-national corporation.
- Communications chair for a charitable foundation that allocated contributions to assist nonprofit organizations needing support to bring hope and healing to children and families in need.
- Elementary school teacher. Earned national awards in reading and math as a master teacher with a master classroom. Directed Character Counts program for pre-K through 8th grade.

Educational Background:

- Bachelor of Arts in Marketing Communications from Brigham Young University, Provo, Utah.

Prior Governmental Experience:

- Oversaw the business development facet of the Greater Salt Lake Area Chamber of Commerce which provided networking and growth opportunities for business leaders throughout the state.

If elected, I will earnestly seek to understand the concerns and priorities of our townspeople and work collaboratively with fellow councilmembers to improve local government's quality and delivery of service. My family moved to Philomath in 2010 from Arizona and immediately felt at home in our community. I love living here! I want to make a difference and believe my skills and experience can benefit Philomath's residents and businesses.

(This information furnished by Tamera L. Hull)

CITY OF CORVALLIS MEASURE 02-88

BALLOT TITLE

CAPTION: A Measure Related to Residential Parking Permit Districts

QUESTION: Shall the City change the residential parking permit program, adding new districts and adding to the regulatory and enforcement program?

SUMMARY: This measure would expand the residential parking permit district program, which regulates the amount of time vehicles without permits may park on the street in a District. The number of Districts would increase from three to seven, resulting in Districts "A", "C", "D", "E", "F", "G" and "J". The location of the new Districts is described by block and street, as are locations within Districts "A", "D" and "J" where only vehicles with permits would be allowed to park. New regulations for issuing residential, employer and guest permits establish eligibility for permits, the number of the permits allowed for each property, where those permits are valid and the duration of the permits. New regulations include enforcement for parking violations and for abuse of the parking permit system.

EXPLANATORY STATEMENT

This measure would alter the existing residential parking permit district program, which regulates the amount of time vehicles without permits may park on the street in a district, create additional residential parking districts, regulate who is eligible to purchase permits, and create other new regulations.

Parking for vehicles without permits would be limited to two hours in a district in a day during the posted hours. Vehicles with permits would be allowed to park longer than two hours in a district.

New regulations would be implemented for the allocation of permits per property, for the visitor permit system, and for where the permits would be valid. Resident permits would be available for purchase to residential parcels located in a district for use by the resident up to a set number of permits allocated based on the number of kitchens. A residential tax lot would be allocated two permits for the first kitchen on the tax lot with one additional permit allocated for each additional kitchen on the tax lot, up to a maximum allocation of 20 permits per tax lot. An application for a resident permit would require proof of residency and a valid vehicle registration. A resident permit would only be allowed to be used on the vehicle for which it is issued.

Employee permits would be available to a business, civic or religious parcel located in a district for use by the proprietor or employees up to a set number of permits allocated based on the square footage of office space in the building. Employee permits would be allowed to be transferred from one employee vehicle to another employee vehicle.

Visitor permits would be available to residents who possess a valid resident permit, up to one visitor permit per residential address. Visitor permits would be allowed to be transferred from one visitor vehicle to another visitor vehicle.

Permits issued for a District would only be valid in that District.

Permits would be valid for a term of one year. Permits purchased after the beginning of the term would be valid for the unexpired portion of the term.

Residential parking district permit fees would be determined by the City Council.

The number of Districts would increase from three to seven. The location of the new Districts would be about the Oregon State University campus and is described by block and street to generally encompass an area bordered on the west by 35th Street, on the north by Polk Avenue, on the east by 6th Street, and on the south by Western Boulevard. New regulations would establish locations within Districts "A", "D" and "J" where only vehicles with permits would be allowed to park during the posted hours. The ordinance if adopted would include a process whereby property owners would be able to petition the City to create new districts.

New regulations would set a minimum fine amount for violations of the parking district regulations and would establish a fine for abuse of the parking permit system.

(Submitted by City of Corvallis)

CITY OF CORVALLIS MEASURE 02-88

ARGUMENT FOR:

**Vote YES on Corvallis Measure 02-88
YES! for Livable Neighborhoods**

We are pleased to support a **Yes** vote on this measure to improve the quality of daily life in the neighborhoods close to OSU. We hope you'll vote in favor of it, too.

The request to expand our current parking district program came to us from people who live in those neighborhoods—homeowners and renters, students and permanent residents.

The measure represents hundreds of hours spent by community members from neighborhoods both near campus and throughout the city. Over more than two years, they worked with one another on City-OSU committees, testified at more than 50 meetings, and arrived at a consensus about the districts and how they would operate.

Both OSU and the City helped fund and support this extensive collaborative effort. In the summer of 2013, the Collaboration Corvallis Steering Committee unanimously passed the parking district recommendation to the City for implementation. We heard from many community members over the course of the past year and were able to adapt the recommended program to meet additional concerns.

This program:

- **only affects those of you who live or park within five blocks of OSU.**
- **will be monitored and evaluated after one year, to be changed or adjusted as needed.**

Please vote Yes on 02-88. It's the result of what Corvallis does best—people working together to help solve problems and keep our community livable.

Mayor Julie Manning

Roen Hogg (Ward 2)	Joel Hirsch (Ward 6)
Richard Hervey (Ward 3)	Bruce M. Sorte (Ward 7)
Dan Brown (Ward 4)	Biff Traber (Ward 8)
Mike Beilstein (Ward 5)	Hal Brauner (Ward 9)

(This information furnished by YES! For Neighbors and Livability Committee)

ARGUMENT FOR:

Vote YES on 02-88. Your YES vote helps support safe, livable Corvallis neighborhoods.

Measure 02-88 expands the neighborhood parking districts program in Corvallis. It only applies to neighborhoods within five blocks of OSU.

This measure will not affect many of us who live in other parts of the city, but **it matters greatly to our fellow community members who live or park in those central-city neighborhoods.** They've worked inclusively for years to reach consensus on a real solution to a real quality-of-life issue.

Now, **they need your vote to make that solution a reality.** It is **neighbors helping neighbors.**

Neighborhood residents have worked hard and followed all the rules to get to this point. They've studied the issues, participated in dozens of public meetings, explored options, and agreed to tough compromises to finally win City Council approval of the proposed plan.

Like any complicated issue, the parking district program contains some elements with which not all of us agree. But **it represents the best efforts** of many of our neighbors and fellow community members to find a way forward on this important neighborhood livability matter.

The city ordinance **requires ongoing monitoring and a one-year evaluation of the program.** That means there will be an opportunity to adapt or change things that may not work as foreseen—for example, adjusting district boundaries, or reviewing permit processes.

We all live in neighborhoods. We support helping and protecting local neighborhoods everywhere in Corvallis. Please join us in voting **YES on Measure 02-88** to support safe and livable neighborhoods, exemplary citizen participation, and continuing community vitality.

Kirk Bailey	Doug Eaton	Mariana Mace
B. A. Beierle	Charlyn Ellis	Rocio Muñoz
Leslie Bishop	Betty Griffiths	Mark O'Brien
George A. Brown	Franklin Hann	Kelly Tharp
Karyle Butcher	Audrey Hatch	Cliff Trow
Randy Chakerian	Tony Howell	JoAnne Trow
Kent Daniels	Deb Kadas	
Trish Daniels	Lyn Larson	

(This information furnished by the YES! For Neighbors and Livability Committee)

CITY OF CORVALLIS MEASURE 02-88

ARGUMENT FOR:

Community Effort Supports YES for Parking Districts

The **unanimously-passed parking district ordinance** by the Corvallis City Council arose out of **concerns of neighborhood residents** living close to the OSU campus who found themselves **competing with commuters for parking spaces near their homes**. It was also more difficult to accommodate the parking needs of visiting family and friends. **Safety was a growing concern**, as those seeking empty spaces sped through the neighborhoods.

The Collaboration Corvallis effort began in the fall of 2011 with three workgroups established from members from the City, OSU, and community. The Parking and Traffic Workgroup included members from OSU campus parking & transportation, sustainability, and university relations, as well as adjacent neighborhood association presidents, a small business owner, an OSU graduate student in traffic engineering, and an LBCC representative. This group undertook **an extensive, in-depth approach** to addressing the complex issue of parking in our close-in neighborhoods.

The Workgroup enlisted transportation and process consultants, City Staff, and interviews of representatives from other university towns. **The 39 meetings over the course of two years encouraged public input**, including three large open-house community meetings to collect comments and ideas. Hundreds of person-hours were spent on this project, resulting in a **set of interrelated recommendations**, each requiring actions by OSU, the City, and local transit providers. Each recommendation was developed understanding that **it would impact the other two**. OSU and the transit services are implementing their two legs of the stool, while the City's leg is pending this referendum's passage.

As participants in this Collaboration workgroup, **we strongly urge you to support Local 02-88** to complete the three-part solution.

Vote YES! for our neighbors and help make all the streets safer for families and friends.

Gary Angelo, *College Hill Neighborhood Association*

Courtney Cloyd, *Central Park Neighborhood Association*

Stanley Nudelman, *Small Business Owner*

Brandon Trelstad, *Chintimini Neighborhood*

(This information furnished by YES! for Neighbors and Livability Committee)

ARGUMENT FOR:

VOTE YES! ON LOCAL MEASURE 02-88

YES FOR NEIGHBORHOOD LIVABILITY

This measure expands residential parking districts in Corvallis neighborhoods **within 5 blocks of OSU**. **It does NOT apply to the entire city**. It is a local issue that only applies to the areas near campus.

Residents—including both homeowners and renters— living in the campus area neighborhoods **asked the city for action** to stabilize their parking situation. In response, the City Council approved expanding the current parking districts and adding additional measures to improve efficiency and effectiveness. **The districts do not apply to the entire city.**

All Corvallis voters are being asked to vote on this local matter because a resident who opposes parking districts collected enough signatures to refer the City Council's decision to the voters. Paid circulators were used to gather the signatures, funded almost entirely by the petitioner and out-of-town business and property interests in the Portland and Salem areas.

Please vote YES on Measure 02-88. Let's allow our local neighborhoods to have parking districts as the Corvallis City Council has already unanimously approved.

(This information furnished by YES! for Neighbors and Livability Committee)

CITY OF CORVALLIS MEASURE 02-88

ARGUMENT AGAINST:**VOTE "NO" ON MEASURE 02-88**

Citizens of Corvallis volunteered hundreds of hours and contributed thousands of dollars to protect our neighbors from this costly, overly bureaucratic, flawed parking scheme -- a parking scheme contrived by a sliver of the community. We believed the citizens should have an opportunity to vote on this ordinance, as it would permanently change the face of this community.

Measure 02-88 IS FLAWED:

Makes it complicated and expensive for contractors to perform work on our homes

This ordinance has no allowance for contractors nor home health care workers to purchase a permit for these districts. This will add to the expense of getting work done for the people living in these districts and make it challenging for our older citizens to receive the services they need to stay in their homes.

Discriminates against bicycle commuters

Bicycle only commuters will not be allowed to purchase a guest pass for their family or friends. Under the ordinance, you must first have a resident pass in order to purchase a guest pass. To get a resident pass you must show vehicle registration. We should not be putting up impediments against people choosing to commute by bike.

Causes more problems

Vehicles will be pushed a few blocks further out and cause problems for neighborhoods that have not had issues before.

Divides the campus from the rest of the community

OSU is an asset to this community. The library and the other resources on campus would become less accessible to the community.

The city would regulate the number of visitors we can have to our homes

Most district residents would be limited to purchasing one guest permit. The city should not be involved in restricting our ability to freely associate.

"I would hope that the City Council would consider that doing nothing might be better than doing this,"
former city manager Jim Patterson, Corvallis Gazette-Times,
2/4/2014

(This information furnished by Citizens for Neighborhood Livability)

LINN-BENTON COMMUNITY COLLEGE MEASURE 22-130

BALLOT TITLE

CAPTION: Linn-Benton Community College District General Obligation Bond Authorization

QUESTION: Shall LBCC be authorized to issue general obligation bonds not exceeding \$34,000,000 for LBCC capital projects? If the bonds are approved, they will be payable from taxes on property or property ownership that are not subject to the limits of sections 11 and 11b, Article XI of the Oregon Constitution.

SUMMARY: If approved, measure would provide funding to combine with and provide required match for other funds to finance LBCC capital costs, including:

- New Healthcare Occupations Center, providing improved, expanded instructional space for Nursing and other Health Occupations Programs.
- Expanded, improved instructional space and parking for Benton Center Programs.
- Phases II/III of Advanced Transportation Technology Center, providing improved, expanded instructional space for Diesel, On-Road Trucking, and Alternative Fuels Programs.
- Repurposing and updating classroom, lab and student spaces at Albany, providing improved, expanded instructional space for Welding, Machine Tool, Mechatronics and educational programs.
- Major maintenance on Albany and Benton Center campuses.
- Payment of bond interest and repayment of existing interim and other financing associated with initial stages.
- Land acquisition, site improvements, demolition, furnishings and equipment related to above and issuance costs.

Bonds may be issued in separate series; each series will mature in 18 years or less. Bonds are estimated to cost \$0.18 per \$1,000 of assessed value, approximately \$36 per year on home with assessed value of \$200,000.

EXPLANATORY STATEMENT

The measure is referred to the voters by the Linn-Benton Community College Board of Education. LBCC has provided the community's post-secondary education and training needs for 47 years and serves more than 20,000 people each year. Many of its buildings were constructed in the 1970s with small budgets. The college has renovated its older buildings in an attempt to respond to changes in technology, teaching methods and educational requirements, and has also relied on funds raised through individuals, businesses and grants. Voters last passed a facilities bond in 2000. Those bonds will be repaid in 2016, and this bond measure would address the most significant facilities needs at a rate estimated to be approximately the same as the bond measure that is being retired. Payments on the new bonds will not begin until after the old bonds are retired.

LBCC plans to fund the following projects with this bond request:

- A new healthcare occupations training facility that would improve and expand training for nurses, dental assistants, occupational therapy assistants, pharmacy assistants, diagnostic imaging technicians, phlebotomists, sleep technicians, medical assistants and medical coders.
- Expansion of classroom and parking capacity for the LBCC Benton Center in Corvallis.
- The final phases of the Advanced Transportation Technology Center in Lebanon, most of which has already been developed through public/private partnerships.
- Repurposing and modernizing space for job training programs in welding, machine tool technology, mechatronics and some general classrooms on the Albany campus that were built in the 1970s. This space will be made available by the relocation of the Auto and Diesel Technology programs to the Advanced Transportation Technology Center as well as relocation of health training programs to the new healthcare occupations training facility.
- Major maintenance projects on the Albany and Benton Center campuses.
- Payment of bond interest and repayment of other costs that have been incurred while developing the bond request.
- Land acquisition, site improvements, demolition, furnishings and equipment related to each of the individual projects.

These projects are estimated to cost \$42 million, of which the state has already allocated \$8 million in matching funds. \$34 million in bond funds would be combined with the \$8 million match to provide the needed funding for the projects. Without the \$8 million match, the state funds will be unavailable for LBCC to use.

For these reasons, this capital construction bond measure is being submitted to the voters of the Linn-Benton Community College District.

If approved, it is estimated that the property tax would be 18 cents per \$1,000 of assessed valuation or approximately \$36 per year on a home with an assessed value of \$200,000. This is approximately the same tax rate of the bond measure that will be paid off in 2016. This is an ESTIMATE ONLY, based on current market information. Actual results may differ, depending on changes in interest rates and assessed value.

(Submitted by Linn-Benton Community College)

NO ARGUMENTS AGAINST FILED

LINN-BENTON COMMUNITY COLLEGE MEASURE 22-130

ARGUMENT FOR:

The Albany Area Chamber of Commerce, Corvallis Chamber of Commerce, and the Lebanon Chamber of Commerce Support the LBCC Bond!

Vote YES for Measure 22-130

This November we have an opportunity to make a difference right here in our community by voting YES for the Linn Benton Community College bond.

LBCC, our community college, plans aggressive investments in job training and classroom improvements right here in Albany, Lebanon and Corvallis.

Specifically the bond will pay for:

Job Training

Nurses & Healthcare Workers

The healthcare industry is one of the mid-valley's fastest growing industries, with a constant need for new trained and qualified job applicants. LBCC is committed to providing training for healthcare professionals in the fields of Nursing and Certified Nursing Assisting and continuing education for current healthcare workers.

Skilled Workers for Local Business

Local employers have openings for welders, computerized machine tool operators and advanced manufacturing technicians. LBCC is committed to modernizing and expanding several key training areas to prepare people for jobs that are waiting to be filled right now.

Building Maintenance and Classroom Investment

A significant portion of the LBCC bond will protect LBCC's existing investment in Albany, Lebanon and Corvallis by addressing critical maintenance issues and improving safety of existing buildings and classrooms. The bond will:

- * Upgrade classrooms with today's technology
- * Modernize vacated and empty buildings for expanded job training
- * Solve safety issue by modernizing power grid system.

Find out more at www.VoteYesLBCC.com

(This information furnished by LBCC for the Community)

ARGUMENT FOR:

We urge you to vote YES for the LBCC Bond! Our Community. Our College.

Vote YES to increase access to transfer courses and community education at the Benton County campus. Classrooms at the Benton Center will be expanded, solving a parking shortage so severe that the classrooms cannot be completely used even now. The project will enable LBCC to serve as many as 350 new students at its Benton County campus.

Linn Benton Community College is ready to meet the need.

Vote YES to help build a local healthcare training facility...training as many as 200 new nurses every year!

Linn Benton Community College is ready to meet the need.

Vote YES to modernize and expand training programs so that local citizens will have the skills for the jobs that are open in our community right now!

Linn Benton Community College is ready to meet the need.

Join us in voting YES for the LBCC Bond Our Community. Our College.

- | | |
|---------------------------|-----------------------------|
| Jim Asleson | Paul Aversano, D.O. |
| Dan Bedore | Eric Blackledge |
| Janet Blair | Pete Bober |
| Barry Broadbent | Paul Canter |
| Rita Cavin | Senator Betsy Close |
| Carol Cromwell | Paula M. Crone, D.O. |
| Thomas D. Cutsforth | Cindy Dahl |
| Maryann Davenport | Harry & Merry Demarest |
| Jim Denham | Pat & Elaine Eastman |
| Don Fountain | John & Carolyn Gardner |
| Shelly Garrett | Representative Sara Gelsler |
| Rebecca Grizzle | Greg Hamann |
| Robert Heald | Dave Henderson |
| Helen Higgins | Lori A. Hill |
| Doris Johnston | Fred Koontz |
| Stacy Koos | Jimmie Lucht |
| Michael J. Martin | Ron Mason |
| James Merryman | Larry A. Mullins, D.H.A |
| Rochelle Murphy | Chris Nurdyke |
| Representative Andy Olson | George Pugh |
| Bill Rauch | Ed Ray |
| Dan Rayfield | David J. Reece |
| Lyn Riverstone | Arnold Rollin |
| Dick Running | Dave Schmidt |
| William H. & Ann Smart | Emerson Smoker, Sr. |
| C.D. Spencer, Jr. | Janet Steele |
| Dale Stowell | Cliff & JoAnne Trow |
| Steve Tubbs | Steve Uerlings |
| Joe Vincent | Mark Walls |
| Buzz Wheeler | Curtis Wright |
| Penny York | |

Commissioner Linda Modrell, Benton County Commissioner

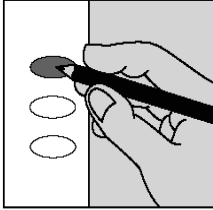
www.VoteYesLBCC.com

(This information furnished by LBCC for the Community)

HOW TO CAST YOUR BALLOT

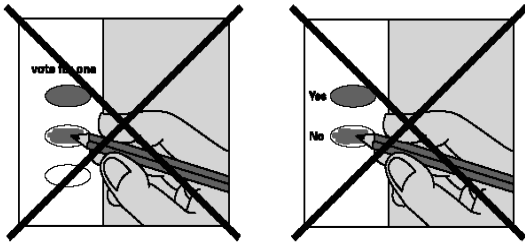
check your ballot!

Use a pen or pencil to fill in the ovals next to your choices.



If you vote for more candidates than allowed, or if you vote **both Yes and No** on a measure, it is called an overvote.

Your vote **will not count** for that candidate or measure.



You do not have to vote on all contests. Those you do vote on will still count.

Contact Benton County Elections to request a replacement ballot if:

- you make a mistake
- your ballot is damaged or spoiled
- you lose your ballot

Benton County Elections

Phone: (541) 766-6756
 Fax: (541) 766-6757
 TTY: (541) 766-6080
 Email: bcelections@co.benton.or.us

1 866 ORE VOTE/673 8683
Se Habla Español
www.oregonvotes.gov

FREQUENTLY ASKED QUESTIONS

Q. How can I find out if my ballot has been accepted?

A. Call our office at 541-766-6756 or check the website www.oregonvotes.gov.

Q. What do I do when a ballot for someone else is delivered to my home?

A. It is important that you **DO NOT THROW THE BALLOT AWAY**. Write on the envelope that the person is no longer at that address and **PUT IT BACK INTO THE MAIL**. Postage is not needed. Once our office has received the undeliverable ballot you will stop receiving them.

Q. I forgot to put my ballot in the secrecy envelope. Will you count my ballot?

A. Yes. We recommend that voters use the secrecy envelope. You can open the ballot return envelope, place your ballot in the secrecy envelope and reseal it. Write "Opened By Voter" along the portion that you sealed and sign your full name there as well. That way we will know that the voter was the one who opened the ballot and can count it. However, if your ballot comes back without a secrecy envelope, it will still be counted.

Q. How do election officials know that I am the one who voted my ballot?

A. The signature on EACH ballot return envelope is verified. Elections staff compares the signature on your ballot return envelope with the signature on your Voter Registration Card. If the signatures do not match we will contact you to help us resolve the issue.

Remember: Even a person with a Power of Attorney cannot sign your ballot. Only you can.

Q. When do election results become available and how can I find out what they are?

A. Election results are available on the Benton County Elections website at: www.co.benton.or.us/elections. First results become available between 8 and 9 PM on Election Night. Further results will be added as ballots are received and tallied. All ballots received will be counted and results posted before the election staff leaves Election Night. However, ballots returned in other counties must be sent to Benton County for later tally and the election cannot be certified until all voters whose ballots were challenged have had an opportunity to respond.

Please, SIGN your ballot return envelope.

YOUR BALLOT MUST BE RETURNED NO LATER THAN 8PM ON ELECTION NIGHT IN ORDER TO BE COUNTED.

POSTMARKS DO NOT COUNT

BENTON COUNTY OFFICIAL BALLOT DROPSITES

BENTON COUNTY ELECTIONS OFFICE

Basement of County Courthouse
120 NW 4th St Rm 13, Corvallis OR 97330
541-766-6756
Mon thru Fri 8:00 am to 5:00 pm
Election Day 7:00 am to 8:00 pm

24-HOUR OUTSIDE DROP BOXES

BENTON COUNTY COURTHOUSE

Courthouse lawn on Fourth Street
120 NW 4th St, Corvallis OR 97330

BENTON COUNTY COURTHOUSE

Accessible entrance on Fifth Street side
120 NW 4th St, Corvallis OR 97330

BENTON COUNTY COURTHOUSE

Across the street on Fifth Street
180 NW 5th St, Corvallis OR 97330

WELLS FARGO BANK

Timberhill Shopping Center
2543 NW Kings Blvd, Corvallis OR 97330

BENTON COUNTY SUNSET BUILDING

Drop box in parking lot
4077 SW Research Way, Corvallis OR 97333

LINCOLN HEALTH CENTER

Drop box in parking lot
121 SE Viewmont Ave, Corvallis OR 97333

NORTH ALBANY SHOPPING CENTER

Drop box in front of former Ray's location
621 Hickory Ave NW, Albany OR 97321

MONROE COMMUNITY LIBRARY

Drop box in parking lot
380 N 5th St, Monroe OR 97456

PHILOMATH PUBLIC LIBRARY

Drop box near main entrance
1050 Applegate St, Philomath OR 97370

OTHER BALLOT DROPSITES

CORVALLIS PUBLIC LIBRARY

645 NW Monroe Ave, Corvallis OR 97330
541-766-6793
Mon thru Thu 10:00 am to 8:00 pm
Fri thru Sat 10:00 am to 6:00 pm
Sun 1:00 pm to 5:00 pm

OSU VALLEY LIBRARY

121 The Valley Library, Corvallis OR 97331
541-737-3331
Mon thru Thu Open 24 hours
Fri Midnight to 10:00 pm
Sat 10:00 am to 10:00 pm
Sun 10:00 am to Midnight

SENIOR CITIZENS CENTER OF CORVALLIS

2601 NW Tyler Ave, Corvallis OR 97330
541-766-6959
Mon thru Fri 8:00 am to 4:00 pm
Election Day 8:00 am to 8:00 pm

LBCC BENTON CENTER

757 NW Polk Ave, Corvallis OR 97330
541-757-8944
Mon thru Thu 8:00 am to 8:00 pm
Fri 8:00 am to 4:00 pm

CITY LIMITS MARKET

5800 NW Hwy 99W, Corvallis OR 97330
541-745-7194
Mon thru Thu 6:30 am to 8:00 pm
Fri 6:30 am to 9:00 pm
Sat 8:00 am to 9:00 pm
Sun 8:00 am to 8:00 pm

JOHN BOY'S ALSEA MERCANTILE STORE

186 E Main St, Alsea OR 97324
541-487-4462
Mon thru Sat 6:00 am to 8:00 pm
Sun 7:00 am to 8:00 pm

THIS CONCLUDES THE BENTON COUNTY
PORTION OF THE VOTERS' PAMPHLET