



OFFICIAL VOTERS' PAMPHLET

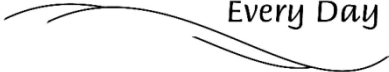
**SPECIAL ELECTION
MAY 19, 2015**

The publication and distribution of this pamphlet is provided by the County Clerk with County Commission approval. The candidate and measure information within was provided by candidates, cities, districts and other interested parties that chose to participate in this portion of the election process.

Benton County:

At Your Service

Every Day





BOARD OF COMMISSIONERS

205 NW Fifth Street
P.O. Box 3020
Corvallis, OR 97339-3020
(541) 766-6800
FAX (541) 766-6893

Dear Benton County Voter:

On May 19, 2015, a Special District Election will be held in Benton County.

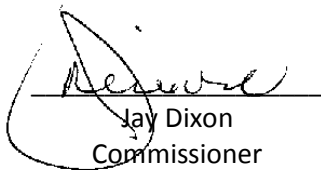
As a registered voter, you have the opportunity to exercise your right to vote on local district board positions for the taxing districts, in which you reside, as well as countywide Measure 2-89 regarding a proposed Benton County ordinance, and other measures that may affect you.

The Benton County Board of Commissioners approved the County Clerk’s request to publish this pamphlet. The Voters’ Pamphlet provides candidates and measure proponents and opponents with the opportunity to share information about themselves or present arguments for voters to consider prior to voting. Participation in the pamphlet is optional. An electronic version of this pamphlet is available at the Clerk’s website www.co.benton.or.us/elections, or upon request via email at bcelections@co.benton.or.us.

Please remember that **all ballots must be received at an official ballot drop site in Oregon before 8:00 PM on Tuesday, May 19, 2015**. You can mail your ballot, or drop it at one of the official ballot drop box locations listed in this pamphlet and on our website. If you have questions or concerns, please contact the Benton County Elections office.

We hope this information will help you become better informed about the candidate and measure choices you are presented with in this election.

Sincerely,


Jay Dixon
Commissioner


Annabelle Jaramillo
Commissioner


Anne Schuster
Commissioner

Exercise Your Right to VOTE.

Benton County:
At Your Service
Every Day

TABLE OF CONTENTS

2	Letter from the Commissioners
3	Table of Contents
Special District Candidates	
4	Linn-Benton Community College Zone 2-3(B): Larry G Martin
	Linn-Benton Community College Zone 6-7(B): Keith Frome
5	Corvallis School District 509J Position 2: Judy K Ball
	Corvallis School District 509J Position 2: Scott Burress
6	Corvallis School District 509J Position 3: Paul Hibbard
	Corvallis School District 509J Position 3: Alexis McQuillan
7	Corvallis School District 509J Position 3: Jim McCullough
8	Corvallis School District 509J Position 6: Felicia Reid-Metoyer
	Corvallis School District 509J Position 7: Chris Rochester
9	Philomath School District 17J Position 2: Ron VanOrden
	Philomath School District 17J Position 2: Shelly Morris
10	Philomath School District 17J Position 5: Wade Haslam
	Philomath School District 17J Position 5: Rick Wells
11	Philomath Fire & Rescue Position 4: Rick Brand
	Philomath Fire & Rescue Position 5: Kevin Sullivan
Measures	
12	Benton County Measure 2-89
13-14	Benton County Measure 2-89 Arguments for
15-18	Benton County Measure 2-89 Arguments against
18	Frequently Asked Questions
19	City of Albany Measure 22-135
20-21	City of Albany Measure 22-135 Arguments for
22	How to Register to Vote and How to Cast Your Ballot
23	Benton County Official Ballot Dropsites

PLEASE NOTE: Some candidates did NOT submit a statement

Candidate statements and measure arguments in the Voters' Pamphlet are optional campaign filings that require payment at the time of submission.

For a complete listing of all candidates and offices, please go to the Benton County website at:

www.co.benton.or.us/elections

Candidate statements are printed as submitted. Benton County does not correct punctuation, grammar, syntax errors or inaccurate information.

Information provided in statements or arguments submitted by a candidate, a political party, an assembly of electors or a person supporting or opposing a measure have not been verified for accuracy by Benton County.

Benton County Elections Office

Phone: 541-766-6756 * Fax: 541-766-6757

Website: www.co.benton.or.us/elections * Email: bcelections@co.benton.or.us

LINN-BENTON COMMUNITY COLLEGE



**LARRY G
MARTIN**
Zone 2-3(B)

Occupation: Independent Distributor of Herbal Nutraceutical Products

Occupational Background: Medical Sales; Numerous positions as a licensed Audiologist concluding at retirement with a Private Practice Hearing and Speech Center

Educational Background: Corvallis High School; Linn Benton Community College; University of Oregon (B.S.); Oregon State University (M.A.); University of Florida (Doctor of Audiology)

Prior Governmental Experience: Served U.S. Army, Disabled Veteran; Served as the military liaison officer for Congressman Jim Weaver's office; Taught university graduate level courses

I am seeking your vote for a position on the LBCC Board of Education, for zone 2-3.

My first two years of college education were completed at Linn Benton Community College, providing me a unique perspective for this institution and our community. I will work diligently to accomplish the following.

- Vision in leadership must be focused on the economic surroundings and adjusted based on community needs. In Linn and Benton Counties, we are seeing a very slow recovery due to the economy in this region.
- My vision for LBCC, is not to grow for the sake of growth. It is easy to find programs to fund, but to stay economically viable the growth should be based on choices that match community needs with its ability to fund those projects.
- Maintain the 5th year program for high school seniors
- Measure programs strengths based on community and state needs for technical education and career pathways.
- Work toward affordable tuition rates from increase in state funding, keeping costs affordable for low and middle income families and by providing open educational resources through free textbooks and educational materials.
- Insuring the continuation of the LBCC/OSU joint degree enrollment program.

Our Community College must have a clear understanding of the pulse of our community and be positioned to adapt. We should be constructing balanced career based programs that provide well trained students that will easily fill the needs for industry and businesses that will enhance our towns, counties, and throughout the state of Oregon.

I appreciate your vote.

(This information furnished by Larry G Martin)



**KEITH
FROME**
Zone 6-7(B)

Occupation: Dentist

Occupational Background: Owner/Dentist of Corvallis Private Dental Practice - 1994 to present; Associate Dentist in Lebanon - 1991 to 1993; Air Force Dentist - 1986 to 1991; General Practice Resident - 1985 to 1986

Educational Background: Bountiful High School - graduated in 1975; Brigham Young University - 1975, 1978-81; University of Washington School of Dentistry - 1981-85, D.D.S. degree; USAF General Practice Residency - 1985-86, GPR certificate

Prior Governmental Experience: LBCC Board of Directors - 2011 to present; LBCC Board Chair - 2014 to present; LBCC Board Vice Chair - 2013 to 2014

As an LBCC Board member for the last four years, I have kept my promise to do three things when I was elected to this position in 2011: First, keep tuition affordable. I have voted against tuition increases every year that I have been on the board. Second, maintain the LBCC/OSU dual enrollment program. This has grown tremendously during the last four years. Third, foster better relationships and fund raising with area businesses. We have just received a \$2.9million award from the city of Albany to expand Career Technical Training working with area businesses. This will result in 500 new jobs in the next five years in the mid-valley. We also added the Advanced Transportation Technology Center in the last three years.

As Board Chair I helped LBCC present a bond measure to you, the voters, which the citizens of Benton County overwhelmingly approved. This will allow us to expand the Benton Center by building more classrooms and we will also build a new parking facility WITHOUT disturbing Washington Park.

I am also advocating, along with our local state legislators, for continuation of the 5th year program in Linn & Benton county high schools. This has helped over 750 low-income high school students obtain an education at LBCC.

I would appreciate your vote to allow me to continue this work.

(This information furnished by Keith Frome)

CORVALLIS SCHOOL DISTRICT 509J



**JUDY K
BALL**
Position 2

Occupation: Consultant.

Occupational Background: Health services research; project director.

Educational Background: Ph.D., M.P.A., Public Administration, Maxwell School, Syracuse University. B.A., Political Science, West Virginia University.

Prior Governmental Experience: U.S. Department of Health and Human Services, 1985-2008. Office of Management and Budget, 1993. Maryland Health Care Commission IRB, 1999-2008. Corvallis School Board, 2011-present. IHN-CCO, Benton Local Advisory Committee, 2014-present.

A quality education should be every child's right. After all, a high school diploma has become the minimum credential for success in our 21st century economy.

Last year, Corvallis saw a real increase in our graduation rate. But we still have room for improvement, especially for children who live in poverty, children with disabilities, English language learners, and children of color. And when these children succeed at the same levels as their peers, all of Corvallis and Oregon will benefit.

I am running for a second term on the School Board because I imagine a school system that:

- Expend fewer limited resources on remediation because our children are proficient in reading and math when they leave third grade. And this means more resources for enrichment and other programs, such as career and technical education.
- Sees bilingual students as better prepared for success in an economy that is increasingly multicultural and global in perspective.
- Believes classroom successes for children with disabilities are opportunities to be realized, not just challenges.
- No longer sees poverty as an impediment to any child's success.

I bring over 20 years of experience in public service, managing large projects, multi-million dollar budgets, expansions, and contractions. As a Board member, I have served as liaison to the Special Education Advisory Committee and on policy and finance workgroups. I have asked hard questions and cast difficult votes according to one underlying principle: What is best for all children in Corvallis?

Our work is not done. I would appreciate your support to help it continue.

(This information furnished by Judy K Ball)



**SCOTT
BURRESS**
Position 2

Occupation: Technician, Hewlett-Packard

Occupational Background: R&D Lab work, teaching, paralegal

Educational Background: B.S. Biology, Ohio University; secondary science teaching certification, Ohio State University

Prior Governmental Experience: None

The Facts

- Works for Hewlett-Packard, since 1995 (previous: Paralegal, substitute teacher, bartender, etc.),
- B.S. Biology, plus teacher certification (Ohio). Studied neuroscience at Ohio University in the 80's, nearly had a minor in philosophy. Spent a year at Ohio State University studying molecular biology in grad school and decided to become a high school biology teacher,
- Has lived in Benton County for >20 years,
- Single parent of one child at LPMS,
- Community and school volunteer: Jefferson PTA, 4H Wildlife Stewards, Solve, and various environmental causes.
 - Specific in-school volunteering includes numerous hours in classroom with 4th and 5th graders at Jefferson as a 4H Wildlife Steward (2007-2013), chaperoned overnight "5th Grade Camp" field trip to Hancock Field Station, Fossil, OR (2013), volunteered for 6th graders on "salmon field study" project at Sweet Home, OR (2014), career speaker and mock interviewer for 11th graders at annual Benton County Career Convention (2010-2015),
- Board of Directors: Ancient Forest Legal Defense Fund (501c3), including volunteering as a litigation support specialist (1995 – 1999).

The argument

The school board has a very important mission of setting policy for the education of our children. I believe that those policies should be evidence based, secular, and advocate equality of access to educational opportunities. Successful school boards function as a team, with members who listen, respectfully share opinions, ask questions, consider community input, and vote responsibly; always keeping in mind the student-centered mission. I understand that quality data should be used as a decision-making tool, and research-based practices that improve student outcomes should be deliberated. Vote for me, Scott Burress, to serve on the Corvallis School Board. Together, we can answer the question: How can we ensure the best education for all students with the available tax dollars?

(This information furnished by Scott Burress)

CORVALLIS SCHOOL DISTRICT 509J



**PAUL
HIBBARD**
Position 3

Occupation: Economics Instructor, Linn-Benton Community College

Occupational Background: Greater Albany Public Schools, High School Mathematics Teacher; Oregon Department of Education, Mathematics Specialist; Santa Clara Unified School District, High School Mathematics Teacher and District Math Coach; Intevac, Logistician; Harker School, High School Mathematics Teacher; Morrow County School District, High School Mathematics Teacher; U.S. Navy, Supply Officer.

Educational Background: M.A. Administration, San Jose State University; M.A.T. Education, Willamette University; M.S. Economics, University of Oregon; B.A. Economics, Whitman College.

Prior Governmental Experience: Oregon Department of Education, Mathematics Specialist.

As a community college instructor, Corvallis School District parent and former high school teacher, I truly understand what our students need from kindergarten through college. Success today requires students who can think critically, collaborate with others, communicate effectively and solve problems.

If elected to the Corvallis School Board, I will bring over 15 years of professional experience in education which includes service as a high school mathematics teacher, district math coach, state mathematics specialist and college instructor, as well as 20 years of leadership experience as a Naval Officer.

My firsthand experience with Corvallis Public Schools dates back to 1971 when I was a kindergartener at Jefferson Elementary. I am now a proud Jefferson Jaguar parent with a daughter in 2nd grade and a son in kindergarten. I can personally attest to the tradition of educational excellence here in Corvallis, and would be honored to serve as a Corvallis School Board member.

(This information furnished by Paul Hibbard)



**ALEXIS
McQUILLAN**
Position 3

Occupation: Community Volunteer - Center Against Rape and Domestic Violence Advocate and Breakfast Planning Committee Chair Elect, Leadership Corvallis Education Day Committee, Women Investing in Samaritan Health Steering Committee

Occupational Background: Secondary Science Teacher, 2000-2007; Wilson Elementary School PTA Board (Volunteer Coordinator), Silent Auction Chairperson, Knowledge Fair Co-Chairperson; Hoover Elementary School Silent Auction Co-Chairperson; Leadership Corvallis Class of 2013

Educational Background: B.S. Biology and Secondary Teaching Certificate, University of Utah; B.S. Environmental Science, Oregon State University; English as a Second Language Teaching Endorsement, Lewis & Clark College

Prior Governmental Experience: None

Education has the power to transform children's lives. Regardless of a child's background, high quality education should give every child the skills, self-confidence, and knowledge to succeed in whatever path he or she chooses. It is vitally important to set high standards for all kids. We must then support every child with excellent teachers and innovative programs so all students have the opportunity to meet these standards.

I am passionate about education. When I taught science as a middle and high school teacher, I loved the impact I could have on students' lives. Because of this passion, I've remained active in our schools by volunteering in my children's classrooms, as a PTA board member, and at events that promote learning and a positive school community. After completing Leadership Corvallis, I joined the Education Day team to help community leaders understand the diverse needs of children in our community.

Corvallis schools are excellent, yet challenges remain. There are many students meeting the high standards we set, while others struggle. As a school board member, I will listen to parents, community members, and educators to make intelligent and informed decisions that meet the diverse needs of students in our district. I deeply care about these issues, as a parent, former educator, and community member who believes education is the key to our community's future.

(This information furnished by Alexis McQuillan)

CORVALLIS SCHOOL DISTRICT 509J



JIM
McCULLOUGH
Position 3

THIS COLUMN INTENTIONALLY
LEFT BLANK

Occupation: Analyst, Samaritan Health Services

Occupational Background: 40 years as senior financial investment executive Senior VP, Aquila Funds; Director Fixed income Institutional Sales, CIBC Oppenheimer; Sales Manager Oregon Municipal Bonds, PaineWebber; President, Security Pacific Securities; SR VP, Security Pacific Bank; VP, Orbanco Financial Corp; VP, NW Acceptance Corp

Educational Background: Bachelor of Business Administration, University of Washington; Commercial Banking Advanced Certificate, Pacific Coast Graduate School of Banking
Prior Governmental Experience: Corvallis School District Budget Committee (Chairman 2014, Member 2012-2014), Lake Oswego School District Budget Committee, PTA (Board member, Treasurer, and President), State of Oregon Treasurer's Committees (Special study for investment of public funds and of State of Oregon municipal bond debt), State of Oregon Treasurer's Collateral Pool Evaluation (Chairman)

Experience, Common Sense, Commitment

Experience: Jim serves as Corvallis School Budget Committee Chair and served on the committee through tough economic times. Tough decisions were required and the district remains strong and emerged in solid financial condition. He has an established relationship with the school board and superintendent and understands the issues. Corvallis school district has aging facilities. Jim will utilize his financial background and bond experience to navigate a healthy financial outcome. In addition, Jim can draw on his Lake Oswego school district experience.

Common Sense: Jim brings common sense and strong problem solving skills to the table. He seeks to put **students first**. Jim seeks to understand all sides. Jim believes that we have strong teachers and parental commitment which are key foundations for children. We need to support our teachers faced with increasing educational mandates and ensure parents have a voice.

Commitment: Jim has deep experience in volunteering for school districts. Jim started in the Lake Oswego PTA when his children were in elementary school. He continued to serve through their high school years on the LO school budget committee. Now, Jim is committed to his grandchildren's school district. One grandson is in elementary and the other is in high school in Corvallis.

(This information furnished by Jim McCullough)

CORVALLIS SCHOOL DISTRICT 509J

PHOTO NOT SUBMITTED

FELICIA REID-METOYER
Position 6

Occupation: Faculty, Oregon State University, College of Education, 2011- Present
Occupational Background: Ten years in the field of education as a pre-K-6th grade educator; Five years experience as a parenting educator with Linn Benton Community College; Three years as a teacher educator with Oregon State University's College of Education; Three years with Teach For America teaching corps
Educational Background: University of California at Los Angeles, undergraduate degrees in Sociology and Diversified Liberal Arts, Mercer University, graduate degree in Elementary Education
Prior Governmental Experience: Appointed to the Corvallis School Board, fall 2014

As the parent of three children currently enrolled in Corvallis schools, I have been a parent advocate, in addition to serving as an education professional, in the following community service positions:

- Two years on the Strengthening Rural Families Advisory Board,
- Three years on the Corvallis Montessori School Annual Auction Committee,
- One year as Vice President of the Wilson Elementary Parent Teacher Association,
- Currently serving as the secretary of the Cheldelin Parent Organization

(This information furnished Felicia Reid-Metoyer)



CHRIS ROCHESTER
Position 7

Occupation: Chair, Corvallis School District Board of Directors; Retired Diplomat, U.S. Department of State
Occupational Background: U.S. Department of State 1985-2007; Secondary and University Teacher 1975-85
Educational Background: M.Phil. Oxford University; B.A Harvard University; Advanced Certificate University of Paris
Prior Governmental Experience: Corvallis School District Board of Directors 2011-15; School District Budget Committee 2009-11; U.S Department of State

We are making progress toward our highest priority goals for the Corvallis School District: delivery of a high quality, challenging education; success for all students; academic growth for all students; effective and sustainable use of our limited resources; educational equity across the district.

The school district is a mirror of the social and economic realities of Corvallis. Our district is increasingly diverse. We have 48 languages; 4 out of 10 students come from low or very low income families; our special education population is growing; we have a significant number of talented and gifted students.

Our graduation rate improved last year from 72% to 84%, putting our district ahead of Oregon and national graduation rates. Almost every subgroup of students showed progress. We managed our budget so that every public dollar was used effectively. We made sure that we did not spend beyond our means. We increased our financial reserves to protect the district from economic downturns. We added all-day kindergarten at all elementary schools. We implemented a dual-language immersion program. We invested in student by student intervention to meet individual needs. We invested in special education. We created multiple pathways to graduation and success beyond graduation.

Corvallis has 13 excellent schools thanks to the dedication of our Superintendent, her staff, and above all our teachers and classified staff. We can't do everything, but we accept no excuses for falling short of our goals. I believe the District has made significant progress the past four years, and I am determined that we will do even better for every one of our students.

(This information furnished Chris Rochester)

PHILOMATH SCHOOL DISTRICT 17J



**RON
VANORDEN**
Position 2

Occupation: Operations Manager at RelianceCM
Occupational Background: Operations Management for Manufacturing and Service organizations with annual revenues of 100K to 30M
Educational Background: Oregon Institute of Technology, ASEET; Junction City Schools, Diploma, Junction City Schools, Diploma, Honor Roll
Prior Governmental Experience: Philomath School District 17J; Budget Committee, appointed 2011 - present; Technology Committee, appointed, 2013 - present; K12 Curriculum Planning Committee, appointed, 2014 - present

Philosophy: No one is greater or lesser, although everyone has greater and lesser capabilities, that when applied properly, will make their lives and community more robust. We need each other, so we should be kind, helpful and respectful of each other. We should be continually responsible and accountable to each other and, as necessary, hold others responsible and accountable. We are all stakeholders in our community.

Statement: Education is a cornerstone of a strong and stable society, and the coming years in particular are going to present incredible challenges to maintaining the quality of our public schools. Federal and state funding are expected to further contract and our district enrollment continues to decline. Having two children who attend Philomath schools, my wife and I have a vested interest in how the Board guides the district through the tough times ahead.

Our community has a reputation for strong support of our schools and I would be honored to add my leadership talents to our Board. As a regular fixture at Board meetings, I have a clear understanding of the commitment required and am ready to serve. I offer the ability to remain uncannily objective and unbiased in even strained situations, the ability to act as a catalyst to help work groups perform better than the sum of their members, a notorious stamina to get the job done and a relentless pursuit of the mission.

Let me be part of the team to bring the strengths of our education professionals and our community together so that we can produce a strategy that will sustain our schools and our families well into the future.

(This information furnished by Ron VanOrden)



**SHELLY
MORRIS**
Position 2

Occupation: Fitness Instructor and Bone Density Technologist.
Occupational Background: Certified instructor and recertifier for LBCC and OSU in Better Bones and Balance for 10 years; Licensed Bone Density Technologist at Corvallis Clinic for 14 years.
Educational Background: Philomath High School Grad 1991; Bone Density licensing course at OHSU 2000.
Prior Governmental Experience: Student Body Pres. PHS 1990-1991; Volunteer for Jail Bond Levy.

I come from a family that has resided in the Philomath School District for 60 years. My family is from both the Timber and Agriculture Industries. I'm married to a PHS graduate, our son and many younger family members attend these schools. I want to be an advocate for them and all children in the school district. My experience in the working and volunteering world enables me the opportunity to listen, prepare, encourage, problem solve, and present solutions for their concerns. I believe a strong healthy community is necessary to raise strong healthy children with options and I'd like to facilitate this outcome to the best of my ability as a member of the Philomath School Board.

"As a lifelong Philomath resident, Shelly Morris has strong ties to the community. In addition to completing countless hours of volunteer work locally she has assisted the high school students with various event preparations. Shelly has very definite ideas but readily invites input to arrive at the best solution to any situation. Shelly's scrupulous honesty and devotion to timely and accurate completion of all tasks makes her a sought after team member. She will truly be an asset on the Philomath School Board." --Geraldine Ross.

(This information furnished by Shelly Morris)

PHILOMATH SCHOOL DISTRICT 17J



**WADE
HASLAM**
Position 5

Occupation: Orthodontist
Occupational Background: Private practice orthodontist, Corvallis, Oregon (1994- present)
Educational Background: New York University, College of Dentistry, Specialty Certificate in Orthodontics, 1994; Oregon Health Sciences University, DMD with Clinical Honors, 1992; Utah State University, BA Liberal Arts/Pre Dental, 1988; Logan High School, Logan, Utah, Diploma 1982
Prior Governmental Experience: Philomath School District (PSD) Bond Oversight Committee (appointed, volunteer); PSD Superintendent Search Committee (appointed, volunteer)

COMMUNITY VOLUNTEER WORK:
 PSD Classroom volunteer
 Assistant Scoutmaster, Boy Scout troop 562
 AYSO Coach
 PYAC Coach

PERSONAL STATEMENT:
 I have lived in Philomath for 19 years where my wife, Lori and I have raised six children. All six of our children, along with three exchange students, have been fortunate to attend the Philomath Public Schools. High academic expectations, competitive and meaningful school activities and the building of life long relationships with friends, PSD staff and community members has been a vital part of my children's lives. I have spent 20 years as an orthodontist working with kids and watching them grow and develop in to wonderful adults. My hope as a member of the PSD board is to serve the kids and be sensitive to their needs first. Schools are there to boost every child's academic achievement, help them find direction and purpose and prepare them for whatever path they choose after high school graduation. I want to represent our entire community and work in unity with the school administration to continue to provide a quality educational experience for all our children.

(This information furnished by Wade Haslam)



**RICK
WELLS**
Position 5

Occupation: Frank Lumber Company
Occupational Background: Army National Guard 1/79 - 1/85; 20+ years Benton County 4H Volunteer; Community Volunteer; School District Volunteer; Benton County Fair Auction Committee; 20+ years Hoskins Kings-Valley Rural Fire Protection Volunteer
Educational Background: Crescent Valley High School - Diploma 1977
Prior Governmental Experience: Philomath School Board Member (2003 - Present)

Candidate Statement:

I have been honored to serve on the Board since 2003. I believe my background in the timber industry and a resident of the Philomath School District since 1984 brings a unique perspective and provides needed diversity.

As a parent with four students who have graduated from the district and a stepson still in high school, I am dedicated to continue to work towards a professional and transparent environment that welcomes parents, staff, and community input in all the decisions that affect our district and our students. I will continue to commit the time and energy required to meet the needs of our district, as I have done the last 12 years.

I am prepared to continue to listen, research facts, consider solutions, and ruffle some feathers to maintain a Board that continues to value public education that serves the needs of all students, regardless of their background or abilities.

(This information furnished by Rick Wells)

PHILOMATH FIRE & RESCUE



**RICK
BRAND**
Position 4

Occupation: Associate Director for Technical Services, OSU Academic Technology

Occupational Background: Director, OSU Media Services; Broadcast Engineer; Professional Soccer Referee; Certified Performance Coach

Educational Background: Long Beach City College, AA, Electronics Technology

Prior Governmental Experience: Budget Advisory Committee, City of Philomath

We live in an ever-changing environment. Sometimes change is slow and at other times it happens quickly. I believe Philomath Fire and Rescue has seen slow change, which has accelerated over the last 40 years. In 1976, when the current station was built, the department had one full time employee. It now has seven. In the past decade we've seen the City of Philomath's population increase by 16%, yet the District's call volume has increased by 50%. Most of the increase is related to medical assistance and not fighting.

With the rapidly continuing change the District has identified the need for improvements involving facilities, staffing, apparatus, equipment, programs and funding. The Board of Directors plays an important role in guiding the District into a future where it continues to provide the level of service people have come to expect for fire prevention and suppression as well as care for human life through education, rescue and treatment.

I feel I'm well equipped to assist with providing leadership in this time of change. Having been employed in leadership positions in a technology field for the past 35 years, I have been involved with continuous and significant change in the way our department has had to operate to move OSU forward. In addition, as a certified performance coach, I have the privilege to work with others as they create change in their lives. As a citizen of Philomath and the District I feel a duty to contribute to the wellbeing of the community. I feel applying my knowledge and skills as a member of the Board of Directors is an important way for me to contribute. Please help me do that by voting for me to be a member of the Board of Directors.

(This information furnished Rick Brand)



**KEVIN
SULLIVAN**
Position 5

Occupation: President of Alyrica Networks, Inc

Occupational Background: Part owner and manager in a local Philomath business for the past fourteen years. Assisted with Hurricane Wilma and Katrina recovery in 2005. Firefighter/EMT-B with Philomath Fire and Rescue from 2001-2012.

Educational Background: EMT- Basic from Linn Benton Community College

Prior Governmental Experience: None

I was a volunteer fireman/EMT with the Philomath Fire Department for over ten years, beginning when I was eighteen. When my daughter was born in 2012, I no longer had the time to dedicate to the training necessary for fighting fires personally, but I'd still like to help the Philomath Fire Department in another capacity. With my experience running a business and my previous experience as a fireman, I believe I can help the Philomath Fire Department to continue to operate at a high level for many more years.

(This information furnished by Kevin Sullivan)

BENTON COUNTY MEASURE 2-89

BALLOT TITLE

CAPTION: Creates rights relating to agriculture and prohibits genetically engineered organisms

QUESTION: Should voters enact an ordinance prohibiting cultivation of genetically engineered organisms and creating rights relating to local food production?

SUMMARY: Enactment of measure establishes: Right to Local Food System, Right to Seed Heritage, Rights of Natural Communities (including right of terrestrial and aquatic systems to exist, persist, and maintain themselves), Right to Self-Government. Rights established are self-executing.

Measure prohibits corporations or government from using genetically engineered organisms; prohibits corporations or government from planting transgenic risk seed in County unless seed is proven to be free of any genetic modification. Measure prohibits corporations and government from requiring registration or patenting of certain seeds. Violation of prohibitions is subject to civil and criminal penalties.

Measure eliminates personal liability to any corporation claiming seed patent or ownership rights or claiming loss of income or commercial infringement resulting from inadvertent infection of agricultural crops by genetically engineered organisms or other patented traits. Measure would require harvest, removal, or destruction of genetically engineered organisms within 90 days of enactment.

Measure could be enforced by the county and individuals. Measure repeals inconsistent provisions of County Code and pre-empts state and federal law inconsistent with rights or prohibitions of measure.

EXPLANATORY STATEMENT

This ballot measure was submitted to the voters through the citizen initiative petition process. It would create a Benton County ordinance establishing a local food system.

Food Bill of Rights

In order to promulgate the local food system, three legal rights would be created:

- (1) The local food system right would protect foods generated from sustainable agricultural systems;
- (2) Right to seed heritage would protect seeds from "infection, infestation, or drift by any means from genetically engineered organisms or trans-genetic risk seed;" and
- (3) Natural communities, described as "soils and other terrestrial systems, aquatic systems" would be given legal rights. Natural communities must be named as plaintiffs in any action brought to enforce the rights of natural communities. Natural communities would be given the right to be free from genetically engineered organisms and to be free from patenting, licensing or ownership of their genes.

Prohibitions to Secure the Bill of Rights

The prohibitions described in the ordinance would apply only to corporations or governmental entities. Individuals would not be held liable for violating any of the rights enumerated in the food bill of rights. Corporations or governmental entities may not: (1) violate any of the rights set forth in the food bill of rights; (2) use genetically engineered organisms in Benton County; (3) plant trans-genetic seed that has not been verified as free of genetic modification; or (4) require registration or patenting of open pollinated or traditionally-bred seed.

Implementation

If enacted, the ordinance would require genetically engineered organisms to be harvested, removed or destroyed within 90 days of the effective date of the ordinance. Following this initial 90-day period, corporations, but not individuals, would be strictly liable for removal of all genetically engineered organisms for which they hold patents or licenses and which are unintentionally located on other property owners' lands.

If, after the 90-day period, genetically modified organisms are discovered in Benton County, the owners of the patents would be liable for all clean-up costs, testing, loss of income, attorney fees and other removal costs.

Enforcement

The local food system ordinance would have supremacy over any law enacted, or rule adopted by the State of Oregon which would "violate the rights or prohibitions" of the ordinance.

Corporations which violate the ordinance would have no "legal rights, privileges, powers, or protections which would interfere with the enforcement of rights or prohibitions enumerated" in the ordinance. The loss of rights would bar corporations from asserting state or federal law preemption claims or that the ordinance lacks authority under law.

Enforcement of the ordinance may only be undertaken by individuals and Benton County. Corporations or other governmental entities would be given no enforcement rights.

Violation of the ordinance could be both a civil violation and a criminal offense.

Repeal of Inconsistent County Code

Inconsistent county code provisions would be repealed. The ordinance does not specify which, if any, county code provisions would be in conflict with the proposed amendment.

(Submitted by Benton County pursuant to BCC 6.205)

BENTON COUNTY MEASURE 2-89

ARGUMENT FOR:

Ten Rivers Food Web supports measure 2-89. This Ordinance gives a legal framework for all the Local Food Systems development done over the last 40 years. It protects We The People from corporate control of all elements of our local food system. It protects our seed and our ability to freely pass seed now and to future generations. It protects Natural Communities upon which all necessary nutrient cycling depends from soil to digestion.

Most importantly, Measure 2-89 is the only chance citizens of Benton County have to gain control over local food production. Otherwise the fate of that production at all levels will be left to international food corporations whose profit motives limit what you eat and the quality of your life. You should vote YES on 2-89 because you and your family have a Right to choose the food quality that you produce in your gardens and pastures or purchase from your local farming community.

This measure does prohibit the open- air production of Genetically Engineered Organisms (GMO's) as a violation of the Right of the Local Food System established by We The People. But this restriction is limited to violations of the local food system. This prohibition does not put any restriction on GMO types of research at OSU as long as that research does not directly impact the Local Food System. In fact this ordinance supports much of the food related OSU research that creatively uses knowledge of various genomes to do conventional plant breeding.

Ten Rivers Food Web sees this ordinance as a positive step for everyone in Benton County as we provide leadership in shaping a future of climate change, expensive energy, and the need for locally based regional foods and quality lives for humans and all other beings. Vote Yes on 2-89.

(This information furnished by Ten Rivers Food Web)

ARGUMENT FOR:

SUPPORT THE CREATION AND PROTECTION OF OUR LOCAL FOOD SYSTEM

YES on Measure 2-89

Since the founding of the Benton County Community Rights Coalition, it has been our mission to keep the promise of democracy that our forefathers gave all Oregonians ~ it is our right to decide the future of our community and the sustainability, resilience, and vitality of the place we call home. The legal foundation to create and maintain a sustainable, resilient, and healthy food system is embodied in Measure 2-89.

Benton County's family farmers, local food system, seed heritage, and right to local self-governance all are under attack by profit seeking corporations at the expense of our community's wellbeing.

Measure 2-89 establishes our right to a local food system, seed heritage, clean air, water and soil for sustainable agriculture in Benton County, and prohibits genetically engineered organisms that violate those rights.

Recent events, including the ODA's decision to expand canola production into the Willamette Valley exclusion zone threatening our specialty seed growers' markets, the passage of Senate Bill 863 that takes away all local decision making authority from our farmers and community related to seed and seed products, and the discovery of unauthorized GMO wheat in eastern Oregon ~ threatening multi-million dollar grain contracts, have made it clear that local citizens must protect the local farm and food system with local law based on our right to govern for our own health, safety, and welfare.

It's time that the people of Benton County reclaim what has always been rightfully theirs. It is our right to grow and produce food in a manner that protects the health and safety of the people, our families, our local farmers, and strengthens our local economy. Our community cannot afford to wait for the federal and state governments to save us.

Our Rights ~ Our Future ~ Our Decision

Please VOTE YES on MEASURE 2-89

(This information furnished by Dana Allen, Benton County Community Rights Coalition)

BENTON COUNTY MEASURE 2-89

ARGUMENT FOR:

In 2012, conventional and organic farmers were galvanized when the Oregon Department of Agriculture declared an emergency rule to allow widespread cultivation of high-risk transgenic canola on 1.7 million acres ordinarily off-limits to this crop. Canola, which could potentially contain genetically engineered traits, readily cross-pollinates with brassicas, a foundational plant of the \$32 million specialty seed industry and fresh market vegetable farmers. Legislative action secured a 2013 bill banning canola that sunsets in 2019.

The 2013 discovery of genetically engineered wheat in Oregon caused an importation ban by Japan, major importer of Oregon wheat. Eventually, Monsanto paid \$2.4 million in damages due to its unapproved proprietary seed.

The Local Food System Ordinance was born during this turmoil as local farmers realized they had few protections against corporate threats to their crops and markets. The three farmers who wrote the ordinance based it on Article 1 of the Oregon Bill of Rights which declares that all power to govern is inherent in the people who have the right to alter or reform their government which is instituted for their peace, safety, and happiness.

The Food Bill of Rights within the ordinance asserts the people's rights to a local food system, seed heritage, and self-government, also securing the rights of natural communities (e.g. pollinators, soil, and water) as foundational for the creation and protection of the local food system. The ordinance elevates the inalienable rights of human beings above those claimed by corporations or the power of the state to forbid.

By Benton Court order, the single subject of Measure 2-89 is the local food system; therefore, all provisions in this ordinance are valid only against impacts to this system and will not affect the use of genetic engineering in biomedical and pharmaceutical research or laboratory teaching and investigation. This ordinance will not impact OSU non-food genetic research.

Measure 2-89 gives community rights to the people not corporations. Vote for your rights.

YES on Measure 2-89

(This information furnished by Benton Food Freedom)

ARGUMENT FOR:

Measure 2-89 is designed to protect established family farms – conventional and organic - in Benton County.

If a farmer's field is contaminated by GMO pollen drift, by law **the farmer** has to pay the patent-holding corporation for the ruined crop. Measure 2-89 gives legal grounds to our farmers and reclaims the power of real people.

The 2013 discovery of GMO wheat in Oregon halted international sales. Foreign markets reject GMO products. According to the Agri-Business Council of Oregon, over 85% of wheat grown in Oregon is exported and is the #1 product exported through the Port of Portland. The Willamette Valley's combination of climate, latitude, soil, and water create a perfect site for seed growers. Just one of our seed growers in Benton County sells seed to 42 countries alone! What will become of our local economy if we allow GMO crops to be grown here? Once GMO crops are released, there is no taking them back.

In 2007 over 80% of GMO seeds planted world-wide were designed to withstand application of herbicides, notably Roundup. Now a new product made with 2,4-D, half the chemical mix of Agent Orange used in the Vietnam war, is slated for use. GMO crops have led to a massive increase herbicide use in the U.S.A. by over 120 million pounds annually threatening sustainable yields, farm jobs, our land, waterways, and ultimately, human health.

The Local **Food System** Ordinance text was required by the court to singly protect the local food system. It is not the intent of the law to curtail biomedical research and it does not affect non-food GMO research.

We all eat food; this measure matters to all of us. The ordinance protects our land, our food system, our health. It gives farmers legal standing against multinational corporations, and interrupts corporate control by reclaiming the power of real people.

Join me – vote **YES on 2-89**.

*(This information furnished by
Martha Perkins, Benton County resident)*

BENTON COUNTY MEASURE 2-89

ARGUMENT AGAINST:

VOTE NO ON MEASURE 2-89! The Benton County Board of Commissioners opposes this poorly written GMO measure.

Should it pass, this measure would significantly and adversely affect Oregon State University research and education related to medicine, agriculture, forestry, environmental protection and wildlife conservation. OSU uses genetically engineered organisms to:

- Develop therapies for various human illnesses, including Lou Gehrig's disease and Ebola.
- Find new ways to prevent and treat skin, lung, ovarian, bone and pancreatic cancer.
- Reduce or prevent the effects of agricultural diseases on Oregon crops.
- Develop improved environmental clean-up methods.
- Detect the unlawful sale of endangered whales and other animals.
- Educate students on modern laboratory tools and procedures.

The measure would cost OSU millions of research dollars and impact more than 100 faculty and support staff and hundreds of students. The Food and Drug Administration, the U. S. Department of Agriculture, the Environmental Protection Agency and others, already regulate OSU's use of GMOs. Although this measure would restrict educational institutions and businesses from using GMOs, it would allow individuals to do as they please with GMOs.

Proponents of this measure claim that it pre-empts state and federal law, but it does not. If voters approve it, the county will be faced with the expense of enforcing and defending the measure, without additional resources to do so. If voters desire a measure limiting the use of GMOs for research or other purposes, doing so county-by-county is not the right answer. Enacting a statewide measure would be the best way to proceed.

Local farmers would lose as well. Farmers would have to remove genetically engineered crops, without compensation, within 90 days of the measure passing.

We urge you to vote against this harmful measure.

Paid for by Commissioners Jay Dixon, Annabelle Jaramillo and Anne Schuster

(This information furnished by Commissioners Jay Dixon, Annabelle Jaramillo and Anne Schuster)

ARGUMENT AGAINST:

Measure 2-89 Will Detract from Our Environment and Sustainability Efforts

Oregon State University is nationally recognized for its environmental protection and sustainability efforts, receiving numerous awards, including one from the Environmental Protection Agency for OSU's purchase of green power.

As people who care about the environment, we are committed to helping citizens, corporations, governments and institutions create a sustainable society.

Measure 2-89 does not exempt educational and research institutions, effectively throttling important research done by environmental scientists at OSU.

We are acutely aware that policy decisions often have direct impact on our environment, and oftentimes in devastating proportions.

Measure 2-89 is an example of a laudable goal taking a significantly wrong turn. It reaches well beyond what its proponents say it will do and will prohibit important research aimed at helping future generations protect the environment.

If passed, this measure would **ban critical ongoing and future research directly related to:**

- Improvements in bioenergy and wood crops
- Enhancing environmental clean-up methods
- Wildlife conservation
- Safety of genetic engineering

At OSU, our researchers are on the front lines of sustainability. We are committed to minimizing negative environmental impacts that come with population growth and the resources needed to feed and shelter a growing and more prosperous population.

As scientists, we believe in helping others develop plans and actions to protect and mitigate future impacts to our environment, including global climate change, habitat destruction and loss of biodiversity. With regards to GE safety, it's important that research is conducted in the controlled, contained settings provided by a research university.

Under Measure 2-89, some important environmental and health research designed to increase sustainability and protect our environment would come to a halt.

Please vote NO on Measure 2-89.

Philip Mote
Brandon Trelstad
Kevin Ahern

The views shared in this statement are our own, and made as citizens in a private capacity, not in any conjunction with Oregon State University.

(This information furnished by Benton County Citizens Opposed to Measure 2-89)

BENTON COUNTY MEASURE 2-89

ARGUMENT AGAINST:**Local farmers urge you to support responsible farming by voting NO on Measure 2-89.**

This badly written measure would force farmers to tear up crops, halt important research, and require extensive enforcement at the expense of the taxpayers.

Our farms have been in our families for decades and we employ dozens of your friends and neighbors. We put in the time to farm responsibly and thoughtfully, grow diverse crops, and work closely with OSU to improve our practices.

If passed, farmers would have to destroy their crops within 90 days with no right to recover the loss of income or livelihood. This would be devastating to small family farms like ours. It doesn't just impact farmers—it would bring advancements being made in agricultural, environmental, medical and scientific research at OSU to a standstill.

We've seen laws, regulations and initiatives before, but never has one been as extreme as Measure 2-89:

- **Trees, plants and seeds are suddenly given rights, just like people.**
- **Any person can sue individual farmers on behalf of a tree, plant or seed.**
- **Farmers would be required to get permission from the Benton County Commission before planting seeds.**

This measure threatens our economy and is an attack on farming and the other small businesses that rely on responsible farming practices to survive.

We care very much about our communities and our county. Our farms are proud to provide healthy and abundant food for our neighbors, local businesses and markets, and our county and state.

We believe there is room for all types of responsible agriculture in Benton County.

Please join us and vote NO on Measure 2-89.

Larry Venell, Venell Farms
Tom Brooks, Brooks Farms
Eric Horning, Horning Farms
Loren Smith, Smith Farms
Chuck Warden, Warden Farms
Tony Stroda, Stroda Brothers Farm
Frank Nusbaum, Nusbaum Farm
Crocker Farms
Goracke Farms
Deerhaven Farms
Nixon Farms
Bruce Ashenbrenner
Barbara Ashenbrenner
Mark Poorman

*(This information furnished by
Debbie and Collin Crocker, C & L Farms)*

ARGUMENT AGAINST:**Business leaders strongly urge a NO vote on Measure 2-89**

Measure 2-89 will be damaging to Benton County agriculture, businesses, and our economy. That's why concerned business leaders and community members are urging a NO vote.

Measure 2-89 hurts family farmers, threatens the economy, and wastes tax dollars.

Under Measure 2-89, some farmers would have to destroy their crops within 90 days with no right to recover loss of income or livelihood. This isn't how we should treat members of our community.

Job losses and economic stress wouldn't end at the farm. Local businesses related to agriculture would also suffer. Measure 2-89 attempts to repeal County Code, and is in direct violation of State law concerning local restrictions on agriculture.

Measure 2-89 would require the County to expend tax dollars on excessive legal and court costs just to determine the legality of the measure. Enforcement for measure 2-89 would require hiring of additional County staff and expenditures far beyond the current budget.

Measure 2-89 shuts down important research at OSU.

It does not exempt use of genetically engineered organisms for biomedical applications, research, or educational institutions. This ban would end some research aimed at protecting endangered species, eradicating crop diseases and providing environmental protections.

OSU estimates that research valued at over \$18 million in fiscal year 2014 would be ended, impacting hundreds of faculty, staff and students.

Banning genetic engineering technology would prohibit the research and development of some therapies for human diseases, such as Lou Gehrig's disease and cancer. Measure 2-89 would shut down some lifesaving work done at OSU.

Measure 2-89 endangers life-saving research, attempts to repeal or pre-empt state law, is damaging to our county's economy, and has irresponsible and irreversible impacts.

Please join us in standing up against this irresponsible initiative. Vote NO on Measure 2-89

Cindy L. Dahl
Curtis Wright
Bond Starker
Megan Schneider
Mayor Biff Traber
Mike Corwin
Skip Rung

*(This information furnished by
Corvallis Chamber of Commerce)*

BENTON COUNTY MEASURE 2-89

ARGUMENT AGAINST:**Community leaders strongly urge a NO vote on Measure 2-89**

Measure 2-89 may be one of the most damaging initiatives we've ever seen in Benton County. That's why a broad coalition of concerned community members is urging a NO vote.

Measure 2-89 shuts down research at OSU.

Banning genetic engineering technology would hinder the research and development of therapies for awful human diseases, such as Lou Gehrig's disease. It also impedes OSU researchers from finding new ways to prevent or treat types of cancer. This groundbreaking work is being done in our community but Measure 2-89 would ban some of the most effective research tools, shutting down lifesaving work done at OSU.

OSU estimates the measure might directly impact 120 or more faculty, stop research valued at \$18.3 million from external funding, affect the education of 300-400 students and impact 100-200 support university staff.

The measure could cost nearly \$30 million in grant funding to OSU for science, medical and agricultural research.

Measure 2-89 also bans some research in protecting endangered species, eradicating crop diseases and providing environmental protections.

Measure 2-89 hurts family farmers and threatens the economy.

Under Measure 2-89, some farmers would have to destroy their crops within 90 days with no right to recover loss of income or livelihood. This isn't how we should treat members of our community who are drivers of our economy.

Job losses and economic stress wouldn't end at the farm. Small business related to farming would also suffer. Measure 2-89 could require the county to pay upwards of hundreds of thousands in taxpayer dollars for enforcement.

Measure 2-89 is dangerous to life-saving research and environmental protections, is damaging to our county's economy, and has irresponsible and irreversible impacts.

Please join us in standing up against this irresponsible initiative and vote NO on Measure 2-89

Ilene Kleinsorge
Larry Roper
Lee Strandberg
Judith Corwin
Karen Wuerch
Jeff Davis

*(This information furnished by
Benton County Citizens Opposed to Measure 2-89)*

ARGUMENT AGAINST:**Measure 2-89 will undermine an existing healthy, diverse, working system**

Since 1980 the Willamette Valley Specialty Seed Association (WVSSA) has maintained seed isolation and field location rules to ensure high quality seed production.

This system has maintained and increased demand for specialty seed produced in the Willamette Valley.

This system has been voluntary and has worked with our diverse group of members producing equally diverse seed crops. WVSSA rules and isolation guidelines are designed to prevent outcrossing and have allowed the coexistence of crops that cannot coexist without this self-regulation.

This allows growers from a wide base of interests to produce the crops best suited to their individual farms and operations.

Measure 2-89 is in opposition to the WVSSA rules and isolation guidelines that are the foundation to our organization and growers.

Measure 2-89 will take control from the WVSSA, and stop a system that has worked so well since vegetable seed was introduced into the Willamette Valley during WWII, and formalized in 1980.

For these reasons the WVSSA is asking you to join us in voting NO on Measure 2-89.

*(This information furnished by
Willamette Valley Specialty Seed Association and
Specialty Seed Growers of Western Oregon)*

BENTON COUNTY MEASURE 2-89

FREQUENTLY ASKED QUESTIONS

ARGUMENT AGAINST:

**Benton County Farm Bureau urges a NO vote on Measure 2-89.
It is bad for our farms, bad for our county**

Few measures have come along that would do as much harm to Benton County as Measure 2-89. This measure will hurt local farms, OSU, local families and businesses that rely on sustainable and responsible agriculture for their livelihoods.

Here's what it does:

Gives county commissioners the authority to determine and approve which seeds farmers can use, with no explanation for who tests the seeds, process of analysis, length of time for testing, or the costs associated with the testing.

Requires local crops banned by the measure to be torn out of the ground within 90 days of passage, and gives no rights to farmers and their families to recover economic loss.

Enforcement could cost the county hundreds of thousands of dollars for crop and seed testing, litigation and violation response, staffing and more—all at the burden of taxpayers.

It provides no exemptions for medical or educational institutions, effectively shutting down important work at Oregon State University, high schools, community colleges, and our hospitals.

It extends human legal rights to trees, plants and seeds, and creates a "food bill of rights." Any person can sue individual farmers on behalf of a tree, plant or seed.

It would halt OSU research in environmental protections, agriculture, science, and life-saving medicine.

OSU estimates over 120 faculty, 200 staff, and 400 students will be impacted by the measure, and a loss of over \$18 million in funding.

Life-saving medical research for treatment for Lou Gehrig's disease, and prevention of skin, lung, ovarian, bone, and pancreatic cancers would end in our county.

The dangerous impacts and aftershocks this measure will have on our county are unprecedented, irresponsible and irreversible. It's just too extreme.

Please join the Benton County Farm Bureau in protecting our county and voting NO on Measure 2-89.

*(This information furnished by
Benton County Farm Bureau)*

Q. How can I find out if my ballot has been accepted?

A. Call our office at 541-766-6756 or check the Secretary of State website www.oregonvotes.gov.

Q. What do I do when a ballot for someone else is delivered to my home?

A. It is important that you DO NOT THROW THE BALLOT AWAY. Write on the envelope that the person is no longer at that address and PUT IT BACK INTO THE MAIL. Postage is not needed. Once our office has received the undeliverable ballot you will stop receiving them.

Q. I forgot to put my ballot in the secrecy envelope. Will you count my ballot?

A. Yes. We recommend that voters use the secrecy envelope. You can open the ballot return envelope, place your ballot in the secrecy envelope and reseal it. Write "Opened By Voter" along the portion that you sealed and sign your full name there as well. That way we will know that the voter was the one who opened the ballot and can count it. However, if your ballot comes back without a secrecy envelope, it will still be counted.

Q. How do election officials know that I am the one who voted my ballot?

A. The signature on EACH ballot return envelope is verified. Elections staff compares the signature on your ballot return envelope with the signature on your Voter Registration Card. If the signatures do not match we will contact you to help us resolve the issue. Remember: Even a person with a Power of Attorney cannot sign your ballot. Only you can.

Q. When do election results become available and how can I find out what they are?

A. Election results are available on the Benton County Elections website at: www.co.benton.or.us/elections. First results become available between 8 and 9 PM on Election Night. Further results will be added as ballots are received and tallied. All ballots received will be counted and results posted before the election staff leaves on Election Night. However, ballots returned in other counties must be sent to Benton County for later tally and the election cannot be certified until all voters whose ballots were challenged have had an opportunity to respond.

Please, SIGN your ballot return envelope.

YOUR BALLOT MUST BE RETURNED
NO LATER THAN 8PM
ON ELECTION NIGHT IN ORDER TO BE COUNTED.

POSTMARKS DO NOT COUNT

CITY OF ALBANY MEASURE 22-135

BALLOT TITLE

CAPTION: City of Albany general obligation bond authorization; amends City Charter.

QUESTION: Shall Albany issue up to \$18 million in general obligation bonds for public safety facilities? If the bonds are approved, they will be payable from taxes on property or property ownership that are not subject to the limits of sections 11 and 11b, Article XI of the Oregon Constitution.

SUMMARY: This measure amends the city charter to authorize up to 18 million dollars in principal amount of city general obligation bonds to finance capital costs related to new, seismically sound public safety facilities, including a police station and a main fire station. The city estimates that the levy for these bonds will be approximately 29 cents per \$1,000 of assessed value.

EXPLANATORY STATEMENT

In 2003, the City of Albany hired an independent engineering firm to assess the downtown fire station's seismic stability. Their report stated the station does not meet structural standards to assure it would survive an earthquake event. Such structural failure would jeopardize the safety of firefighters and destroy or damage equipment and emergency vehicles needed to respond to the emergency needs of the community. The report was reaffirmed in 2011 and 2015 by other independent engineering firms. The City considered retrofitting the building, but concluded that the extent of work needed is not economical.

The Albany Police station was built for a staff of 47 in 1988 when the City's population was 28,020. More than 90 people work in the building today and the population has grown to 51,270. A recent engineering evaluation found that this essential public safety building does not meet current safety standards.

In January 2014, the City Council appointed 14 community members to a Public Safety Facilities Review Committee. After 12 meetings, the committee recommended the main fire station be replaced on site and a new police building be constructed on City-owned property on Pacific Boulevard SW. The committee recommended this bond measure as part of a three-part funding package to pay for both buildings.

The City's Strategic Plans, as early as 2007, have identified the need for new fire and police facilities and stated the intention to take a funding measure to voters no later than 2015. The City Council is asking voters to consider funding these facilities now while interest rates are historically low. New bonds would generally coincide with pending payoff of older general obligation bonds, issued in 1996 and 1999 (refinanced in 2007). The final payment on the older bonds will be made on June 1, 2015 at a cost of 37 cents per thousand dollars of assessed value. With the pay-off of those bonds and a recent upgrade in Albany's bond rating, new fire and police station bonds are estimated to be levied at approximately 29 cents per thousand dollars of assessed property value.

(Submitted by City of Albany)

CITY OF ALBANY MEASURE 22-135

ARGUMENT FOR:

VOTE YES on 22-135

A 'YES' vote authorizes the city of Albany to replace the outdated Fire and Police Stations with fully functional and seismically stable buildings. A 'YES' vote **WILL DECREASE** your current **TAX RATE**.

What happens when first responders can't respond?

The downtown Fire Station (Station 11) is the Albany Fire Department's Operations Center during major fire or emergency events, but the outdated building **fails to meet important structural requirements** and would likely be unusable during a natural disaster, or even a basic power outage. In particular, the building would not withstand a major earthquake, has inadequate electrical wiring, cannot support an adequately sized emergency generator or accommodate the size of modern fire engines. All of these deficiencies hinder the ability of the Fire Department and Ambulance services in responding to **your** emergency calls. The new station will not need to be expanded in the future.

Albany Police Need Necessary Resources to Protect Our Community

The Albany Police Station does not meet 2015 Essential Facilities building codes and lacks sufficient backup power and seismic stability to **operate during an emergency**. It does not have secure interview or holding cells and requires off-site storage for critical evidence. The temporary public lobby forces unexpected contact between the public and offenders, such as sex offenders required to register in the same place that victims come to report a crime, creating an unacceptable risk for the public.

Due to population growth, the number of staff has increased almost 100% since the station was built, and because of severe space limitations detectives and patrol officers are housed in separate buildings making the sharing of critical information more difficult. The new police station is designed for future population growth, and as the city continues to grow, Albany deserves a police station that has the space needed to serve and protect the community.

*(This information furnished by
Citizens for a Safer Albany, PAC)*

ARGUMENT FOR:

VOTE YES ON FIRE, AMBULANCE AND POLICE BOND

"As a longtime Albany resident and business owner, I'm **voting YES** on 22-135. The time to replace these buildings is **NOW**. Not only are these necessary expenditures in order to keep both our first responders and the citizens of Albany safe, but if we wait to replace them, the cost of the new buildings will only increase. It will never be cheaper than it is right now so let's take advantage of that and do what is needed to protect the citizens of Albany. **VOTE YES**." --**Buzz Wheeler, Owner Coastal Farm and Ranch**

"If we expect first responders to be there for us during emergencies, we need to guarantee they have the proper tools and necessary facilities to do so. **VOTING YES** ensures that the citizens of Albany will be able to rely on Fire, Ambulance, and Police services during emergencies and that these responders are prepared and able to protect the public whenever necessary." --**Mike Martin, President of Security Alarm Corporation (SAC)**

"The city has done an extensive amount of research on these projects. The need has been clearly demonstrated, and the proposed new buildings will be able to serve the community for decades to come. **THE NEED IS CLEAR AND THE TIME IS NOW – VOTE YES ON 22-135.**" --**Greg Roe**

"Some people think we should be separating the police station and fire station bond measure proposals on the ballot. I question why? Do you know if one public safety service is more important than the other? They are equally important! There are no more excuses to not support these needed stations. Do what is right and **VOTE YES.**" --**Ron Loney, Retired Executive Director of Albany Boys and Girls Club.**

*(This information furnished by
Citizens for a Safer Albany, PAC)*

CITY OF ALBANY MEASURE 22-135

ARGUMENT FOR:

VOTE YES ON 22-135

"As co-chairmen of the Public Safety Facilities Review Committee that recommended the replacement of both Fire Station 11 and the Albany Police Station, we strongly encourage you to **VOTE YES on 22-135**. The committee studied the deficiencies of both buildings and clearly established the need for the proposed new facilities. In particular, we diligently reviewed the viability of keeping the police station at its current site but found that the additional land required to meet existing and future needs was not available, leaving the only viable alternative to build on the Pacific Blvd site. This is the fiscally responsible option! The community depends on the Fire and Police Departments to keep them safe, and now we have the opportunity to ensure that first responders not only have the means to do so, but we as a city can ensure they are kept safe as well. The homework has been done and it's time to protect those who serve and protect us. **VOTE YES ON THE FIRE, AMBULANCE AND POLICE BOND.**"

--Retired Senator Frank Morse and Retired Linn County Sheriff Dave Burright

"**Voting YES will NOT increase your current tax rate.** Your tax rate will actually **DECREASE** from its current amount, because the current General Obligation Bonds for two existing fire stations and past street improvements will be paid off this year. The new proposed bond of 29 cents per \$1000 of property value is lower than the expiring bond of 37 cents per \$1000. In addition, the cost for new bonds are at a low interest rate and construction costs will most likely increase, which makes this **the right time** to replace the downtown fire station and build a new police station. Please support our hometown public safety needs by voting **YES** on the Fire, Ambulance and Police Bond." --Mayor Sharon Konopa

*(This information furnished by
Citizens for a Safer Albany, PAC)*

ARGUMENT FOR:

JOIN US IN VOTING YES FOR OUR COMMUNITY'S
PUBLIC SAFETY FACILITIES:

Senator Sara Gelser
 Andy Olson, State Representative, HD15
 Retired Senator Frank Morse
 Doug Marteeny, District Attorney, Linn County
 Benton County District Attorney, John Haroldson
 Sheriff Bruce Riley, Linn County
 Retired Linn County Sheriff Dave Burright
 Mayor Sharon Konopa
 City Councilor Bill Coburn
 City Councilor Floyd Collins
 City Councilor Ray Kopczynski
 City Councilor Bessie Johnson
 City Councilor Richard Kellum
 Albany Fire Fighter's Union IAFF, Local 845
 Albany Police Association, Teamsters Local 223
 Linn County Democrats
 Ronald E. Loney, Former Executive Director of
 Boys and Girls Club of Albany
 Mike Martin, President of
 Security Alarm Corporation (SAC)
 Buzz Wheeler, Owner of
 Coastal Farm and Ranch
 Janet Steele, President of
 Albany Area Chamber of Commerce
 Michael Alderson
 Mark D. Azevedo
 James Brooks
 Steve Bryant
 Hasso Hering
 Scott Lepman
 James Merryman
 Mike Newman
 John Pascone
 David J. Reece
 Greg Roe

*(This information furnished by
Citizens for a Safer Albany, PAC)*

**NO ARGUMENTS AGAINST THIS
MEASURE WERE FILED**

Registering to Vote

To vote in Oregon you need to be registered in the county where you reside.

You can register if you can answer yes to these three questions:

- Are you a resident of Oregon?
- Are you a US citizen?
- Are you at least 17 years of age?

If you are 17 years of age, you will not receive a ballot until an election occurs on or after your 18th birthday.

How to register

You can register to vote online at www.oregonvotes.gov or you can get a voter registration card at any of the following places:

- Benton County Elections Office
- any county elections office
- the Secretary of State's Office
- some state agencies such as the Division of Motor Vehicles (DMV)
- a voter registration drive

You can fill the card out in person or send it in by US mail. You can also print out a registration card online at: www.oregonvotes.gov.

What information is required to register?

To complete your registration you will provide your:

- full legal name
- home address
- date of birth
- signature
- valid identification

Updating your voter registration

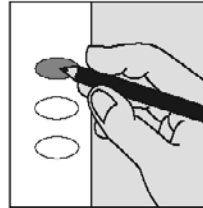
Once you have registered, you are responsible for keeping your information up to date. You can do this online at www.oregonvotes.gov or by completing and returning a voter registration card with the new information. You should update your registration if you do any of the following:

- change your home address
- change your mailing address
- change your name
- change your signature
- want to change or select a political party
- will be away from home on election day

How to Cast Your Ballot

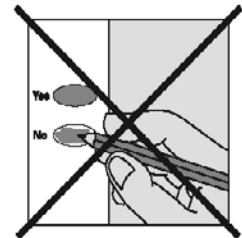
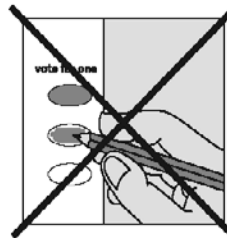
check your ballot!

Use a pen or pencil to fill in the ovals next to your choices.



If you vote for more candidates than allowed, or if you vote **both Yes and No** on a measure, it is called an overvote.

Your vote **will not count** for that candidate or measure.



You do not have to vote on all contests. Those you do vote on will still count.

Contact Benton County Elections to request a replacement ballot if:

- you make a mistake
- your ballot is damaged or spoiled
- you lose your ballot

Benton County Elections

Phone: (541) 766-6756

Fax: (541) 766-6757

TTY: (541) 766-6080

Email: bcelections@co.benton.or.us

1 866 ORE VOTE/673 8683

Se Habla Español

www.oregonvotes.gov

BENTON COUNTY OFFICIAL BALLOT DROPSITES

BENTON COUNTY ELECTIONS OFFICE

Basement of County Courthouse
120 NW 4th St Rm 13, Corvallis OR 97330
541-766-6756
Mon thru Fri 8:00 am to 5:00 pm
Election Day 7:00 am to 8:00 pm

24-HOUR OUTSIDE DROP BOXES

BENTON COUNTY COURTHOUSE

Courthouse lawn on Fourth Street
120 NW 4th St, Corvallis OR 97330

BENTON COUNTY COURTHOUSE

Accessible entrance on Fifth Street side
120 NW 4th St, Corvallis OR 97330

BENTON COUNTY COURTHOUSE

Across the street on Fifth Street
180 NW 5th St, Corvallis OR 97330

WELLS FARGO BANK

Timberhill Shopping Center
2543 NW Kings Blvd, Corvallis OR 97330

BENTON COUNTY SUNSET BUILDING

Drop box in parking lot
4077 SW Research Way, Corvallis OR 97333

LINCOLN HEALTH CENTER

Drop box in parking lot
121 SE Viewmont Ave, Corvallis OR 97333

NORTH ALBANY SHOPPING CENTER

Drop box in front of former Ray's location
621 Hickory Ave NW, Albany OR 97321

MONROE COMMUNITY LIBRARY

Drop box in parking lot
380 N 5th St, Monroe OR 97456

PHILOMATH PUBLIC LIBRARY

Drop box near main entrance
1050 Applegate St, Philomath OR 97370

OTHER BALLOT DROPSITES

CORVALLIS PUBLIC LIBRARY

645 NW Monroe Ave, Corvallis OR 97330
541-766-6793
Mon thru Thu 10:00 am to 8:00 pm
Fri thru Sat 10:00 am to 6:00 pm
Sun 1:00 pm to 5:00 pm

OSU VALLEY LIBRARY

121 The Valley Library, Corvallis OR 97331
541-737-3331
Sun thru Sat 10:00 am to 10:00 pm

SENIOR CITIZENS CENTER OF CORVALLIS

2601 NW Tyler Ave, Corvallis OR 97330
541-766-6959
Mon thru Fri 8:00 am to 4:00 pm
Election Day 8:00 am to 8:00 pm

LBCC BENTON CENTER

757 NW Polk Ave, Corvallis OR 97330
541-757-8944
Mon thru Thu 8:00 am to 8:00 pm
Fri 8:00 am to 4:00 pm

CITY LIMITS MARKET

5800 NW Hwy 99W, Corvallis OR 97330
541-745-7194
Mon thru Thu 6:30 am to 8:00 pm
Fri 6:30 am to 8:30 pm
Sat 8:00 am to 8:30 pm
Sun 8:00 am to 7:30 pm

JOHN BOY'S ALSEA MERCANTILE STORE

186 E Main St, Alsea OR 97324
541-487-4462
Mon thru Sat 6:00 am to 8:00 pm
Sun 7:00 am to 8:00 pm

Benton County Elections
120 NW 4th St Rm 13
Corvallis, OR 97330

NONPROFIT
CAR-RT SORT
U.S. Postage
PAID
Portland, OR
Permit No. 692



RESIDENTIAL CUSTOMER



OFFICIAL BENTON COUNTY
VOTERS' PAMPHLET
MAY 19, 2015 SPECIAL DISTRICT ELECTION

