



OFFICIAL VOTERS' PAMPHLET

**SPECIAL ELECTION
NOVEMBER 3, 2015**

The publication and distribution of this pamphlet is provided by the County Clerk with County Commission approval. The measure information within was provided by cities, districts and other interested parties that chose to participate in this portion of the election process.

Benton County:

At Your Service

Every Day



BOARD OF COMMISSIONERS

205 NW Fifth Street
P.O. Box 3020
Corvallis, OR 97339-3020
(541) 766-6800
FAX (541) 766-6893

Dear Benton County Voter:

On November 3, 2015, a Special Election will be held in Benton County. As a registered voter, you will have the opportunity to exercise your right to vote on:

- Measure 2-90: Philomath residents have an annexation to consider; and
- Measure 2-91: A measure to finance the construction of a county jail; and
- Measure 2-92: Chinook Road District is seeking renewal of a district tax levy.

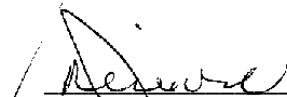
The Benton County Board of Commissioners approved the County Clerk’s request to publish this pamphlet. The Voters’ Pamphlet provides measure proponents and opponents with the opportunity to share information and present arguments for voters to consider prior to voting. This pamphlet is available at the Clerk’s website www.co.benton.or.us/elections or upon request via email at elections@co.benton.or.us.

Ballots must be received at any official ballot drop site in Oregon by 8:00 PM on Election Day, Tuesday, November 3, 2015. Ballots should be mailed no later than the Friday prior to Election Day. Other return options include dropping your ballot off at an official ballot drop box, bringing it directly to the Elections Office located in the basement of the historic Benton County Courthouse, 120 NW 4th Street in Corvallis.

A complete list of Benton County ballot drop-box locations is on our website, and within this pamphlet. If you have questions or concerns, please contact the Elections office at (541) 766-6756.

We hope this information will help you become better informed about the issues you are presented with in this election.

Sincerely,


Jay Dixon
Commissioner


Annabelle Jaramillo
Commissioner


Anne Schuster
Commissioner

Exercise your right and VOTE.

Benton County:
At Your Service
Every Day

TABLE OF CONTENTS

2	Letter from the Commissioners
3	Table of Contents
Measure 2-91	
4	Benton County Measure 2-91 Ballot Title and Explanatory Statement
5	Benton County Measure 2-91 Arguments in Favor
6	Benton County Measure 2-91 Arguments in Favor
7	Benton County Measure 2-91 Arguments in Favor
8	Benton County Measure 2-91 Arguments in Favor
9	Benton County Measure 2-91 Argument Against
Measure 2-90	
10	City of Philomath Measure 2-90 Ballot Title and Explanatory Statement
11	City of Philomath Measure 2-90 Annexation Map
Measure 2-92	
12	Chinook Drive Road District Measure 2-92 Ballot Title and Explanatory Statement
12	Chinook Drive Road District Measure 2-92 Argument in Favor
13	Registering to Vote
13	How to Cast a Ballot
14	Voter Registration Form
15	Benton County Official Ballot Dropsites

PLEASE NOTE

Measure arguments in the Voters' Pamphlet
are optional campaign filings
that require payment at the time of submission.

The arguments supporting or opposing the measures do not constitute an endorsement by Benton County. Benton County does not warrant the accuracy or truth of any statement made in the arguments.

Benton County Elections & Passports Office

Phone: 541-766-6756

Fax: 541-766-6757

Website: www.co.benton.or.us/electionsE-mail: elections@co.benton.or.us

BENTON COUNTY MEASURE 2-91

BALLOT TITLE

CAPTION: Bonds to construct jail, reduce early release, increase staff safety

QUESTION: Shall county construct jail, increase staff safety, add treatment program space; issue bonds not exceeding 25 million dollars? If the bonds are approved, they will be payable from taxes on property or property ownership that are not subject to the limits of sections 11 and 11b, Article XI of the Oregon Constitution.

SUMMARY: If approved, this measure would provide funds for Benton County to issue up to \$25 million of general obligation bonds to finance construction costs for a new adult corrections facility.

A new jail would increase officer safety, add additional space for mental health and addiction treatment programs, and help keep offenders from being released early. The new jail would house approximately 110 inmates and provide approximately 20 work release beds.

Bond proceeds would allow Benton County to construct and install infrastructure, construct, equip and furnish the jail; and the financing of all necessary related costs and improvements.

Benton County estimates the bonds would mature in twenty-one (21) years or less from issuance and be issued in one or more series. Bonds will also finance issuance costs. The County estimates property owners would pay \$0.26 per \$1,000 of assessed value per year. The actual rate may vary depending upon interest rates, change in assessed value and amount of bonds sold.

EXPLANATORY STATEMENTPurpose

This measure would authorize Benton County to issue up to \$25 million of bonds to build and equip a new correctional facility and work release facility that would expand capacity and increase staff safety.

Current Capacity Issues

The current Benton County Jail has a maximum capacity of 40 inmates. Beginning in 2000, voters approved new taxes for Benton County to rent an additional 40 beds in other counties. The rental beds are contingent on space availability in the other counties and the per bed rental rate increases annually.

Increase Correctional Facility Staff Safety

The proposed new correctional facility would be designed to keep staff and inmates safe. Improvements would include air systems to prevent the spread of communicable diseases and a layout with views from a central control room and cell blocks that could be easily monitored and secured.

Treatment Programs

The proposed new correctional facility would have additional space for programs to treat mental health and substance abuse addiction. The additional correctional facility beds would allow inmates to remain in Benton County where case workers can address individual needs and ensure a continuity of care upon release. In addition, the new correctional facility would have space for classes for offenders to learn skills and get stable jobs in the community.

Alternative Sentencing and Sanctions

A larger correctional facility would strengthen alternative sentencing and sanctions by adding work release and improving inmate work crew programs. The correctional facility would have space to house offenders who violate the terms of these programs, providing incentives for completion of alternative sentencing programs.

Benton County would continue its strong commitment to alternative sentencing and sanctions including:

- a day reporting center;
- community service work crews;
- electronic home detention;
- Drug Treatment Court

Location and Size

The proposed correctional facility would be designed to house approximately 110 inmates and 20 work release beds. It is estimated that the average daily population would remain lower than the 110 inmate maximum due to inmate classification requirements. The county has taken an option to purchase property at a currently vacant site between Philomath and Corvallis. The site is 15.3 acres in size, with nearby roads and utilities. The site is currently zoned for heavy industrial use.

Operations

The proposed new correctional facility would be more resource efficient and would be designed to operate with similar staffing levels to the current jail. Additionally, deputies currently assigned to transport inmates to rental beds would be partially reassigned to the correctional facility. The correctional facility would also increase nursing staff to accommodate additional inmates held in Benton County, as well as reduce trips to the emergency room.

Tax Impact

The general obligation bonds would be paid for over a period of no more than 21 years. The estimated maximum annual tax cost would be \$0.26 per \$1,000 of assessed value. A property with an assessed value of \$100,000 would pay approximately \$26 annually or \$2.17 per month.

(Submitted by Benton County Board of Commissioners)

BENTON COUNTY MEASURE 2-91

ARGUMENT FOR:**Argument in Support:
Retired Benton County Sheriffs**

Retired Sheriffs Dave Cook, Stan Robson, Jim Swinyard, and Diana Simpson urge you to vote YES for a new jail.

Constructed in 1976 as a "temporary" facility, it did not take long for the jail to outlive its capacity and ability to house offenders. Every Sheriff since 1989 has experienced the need to address:

- overcrowding,
- a booking process that can bottleneck and shut down the jail,
- maintenance issues,
- community safety with early releases of offenders,
- diminishing rehabilitation program opportunities for inmates.

It is time to build a new jail and provide community safety!

In Benton County, we all deserve a high quality of life, but that starts by providing a safe community for everyone. Providing a safe community must ensure that our county jail can keep dangerous criminals in jail.

Many believe Benton County has no crime and only those with minor offenses land in jail. However, at one time in 2009 the Benton County Jail held 5 different inmates on charges of murder and aggravated murder, including Joel Courtney the kidnapper and murderer of Brooke Wilberger.

A YES Vote on 2-91 will help the Benton County Sheriff's Office hold these offenders accountable.

By passing this bond measure:

- Offenders will receive evidence based treatment programs to assist in their rehabilitation.
- Offenders with mental illness will receive the necessary consistent and humane treatment from qualified treatment specialists.
- Offenders with jobs will be able to keep their employment while serving their time.
- Offenders who need to stay in jail will not be released early due to overcrowding.
- Offenders caught in the bottleneck of the booking process will be processed in a timely and safe manner.

Most importantly, a new jail will provide a safe, humane, and progressive environment for jail deputies, jail staff, local law enforcement, and the inmates.

*(This information furnished by
Retired Sheriff Diana L. Simpson)*

ARGUMENT FOR:**Benton County Democrats : Vote YES on a new jail!**

With only 40 beds for a population of more than 80,000 people and a woefully inadequate facility for the incarcerated as well as jail deputies at the Benton County Jail, we saw for ourselves during a tour of the current jail just how badly a new one is needed.

A new jail would provide adequate facilities to humanely treat incarcerated individuals suffering from mental illness and addictions, as well as help inmates gain job and life skills and educational opportunities that help them become productive members of society. The current jail isn't adequate to do any of those things. A YES vote on a new jail can put an end to many individuals' behaviors that get them locked up.

The current jail, due to structural and design issues, also isn't safe for the inmates or the staff protecting us. The current jail is falling apart. Concrete walls are crumbling and poor ventilation increases the likelihood of spreading infectious disease when one ill person enters the facility. The design makes it difficult for deputies to do their jobs.

A new jail also is a prudent use of resources. Currently, through the jail bed rental program, Benton County taxpayers are footing the bill for other counties to expand their jails and offer jobs to their residents. That money could be put to use in Benton County. Currently we are spending \$1.4 million annually to house inmates elsewhere and transport them back and forth.

In 2014 the jail was closed for 305 hours preventing deputies and officers from admitting those who were arrested for many different types of crimes. That takes officers off the street unnecessarily. It's unsafe and it's unacceptable for our community.

All of these problems can be solved by building a new jail. Please join us in voting YES for a new jail!

(This information furnished by Benton County Democrats)

BENTON COUNTY MEASURE 2-91

ARGUMENT FOR:

Vote YES on 2-91!

Get caught committing a crime in Benton County and you may or may not go to jail.

It depends on whether the jail has space for you. To find out, you will sit in the back of a police car while an officer or deputy checks to see if there is room for you. If it is not your lucky day, you may end up incarcerated. If it is your lucky day, you will be released and asked to come back later. If you don't come back, a warrant will be issued for your arrest and the process will begin all over again.

Our local jail, built in 1976 to house 27 prisoners, is a pint-sized lock-up. Too small to house our average daily population of prisoners; too small to provide medical, mental health, substance abuse or other treatment programs for those unlucky enough to be incarcerated. That increases the likelihood that, once released from jail, they will shortly return without having had the benefit of programs like anger management that reduce domestic abuse or earning a GED in order to become employed.

Some people must be housed in jail in order to protect children, families and the rest of us. Without a jail we have no criminal justice "system". Every day we subject jail staff to a physical environment that prevents offering programs and treatment that prepares inmates for a successful return to our community. We subject our citizenry to people who leave jail no better than they entered and perhaps worse. Successful programs like Drug Treatment Court depend upon a jail to enforce conditions of release.

So let's give our community and jail staff a resource we have lacked for decades.

Vote Yes on 2-91!

Benton County Commissioners Jay Dixon, Annabelle Jaramillo and Anne Schuster; District Attorney John Haroldson.

(This information furnished by Commissioners Jay Dixon, Annabelle Jaramillo and Anne Schuster and District Attorney John Haroldson)

The printing of this argument does not constitute an endorsement by Benton County, nor does the county warrant the accuracy or truth of any statement made in the argument.

ARGUMENT FOR:

Benton County's current shortage of jail beds creates very significant public safety concerns. As Circuit Court Judges, we see the impact of the jail bed shortage every day.

1. Individuals are currently being released that need to be held in jail because they likely will re-offend or fail to appear in court.
2. It is important that the Court remain credible with the sentences that are imposed. Frequently, defendants are released from their sentence to accommodate other offenders.
3. Jail sanctions for participants in the Benton County Drug Treatment Court and for offenders on supervised probation are too often limited or non-existent. Research has shown that the immediacy of sanction has the greatest impact on holding someone accountable. Offenders that are not held accountable are much more likely to reoffend.
4. On average 16% of people in local jails suffer from mental illness. With our current jail, we are unable to provide continuity of treatment for these individuals. Additional jail space will enhance our community's ability to better serve this inmate population.
5. Additional jail space will allow for a work release program so that less violent offenders can be held accountable and still maintain their employment.

A YES vote on Measure 2-91 will help ensure Benton County's ability to:

- Effectively prosecute criminal conduct and hold offenders accountable.
- Maintain adequate jail space to house dangerous criminals.
- Put a stop to the costs for all criminal justice partners associated with offenders who are being released due to no jail beds and fail to appear in court. This process can be repeated numerous times before getting that person into court.
- Provide more sentencing options, including work release.
- Provide continuity of mental health, drug and alcohol treatment to offenders in custody.

We urge you to show your continued support for the safety and welfare of all who live and work in Benton County by voting YES on Measure 2-91.

(This information is furnished by Honorable David B. Connell, Honorable Matthew J. Donohue, and Honorable Locke A. Williams)

The printing of this argument does not constitute an endorsement by Benton County, nor does the county warrant the accuracy or truth of any statement made in the argument.

BENTON COUNTY MEASURE 2-91

ARGUMENT FOR:

The Benton County Correction Facility's purpose is to hold all offenders including those incarcerated for serious crimes. Focus on correcting addiction behavior and assistance with mental health issues are critical to a functioning system.

Instead it has become the Benton County Jail. Meaningful corrections programs are too few. The facility is too small and in dismal physical condition. Inmates are transported to jails in other counties, or released early because there is no room.

Big problems in Corvallis and Benton County are alcoholism, drug addiction and mental health issues and at some point individuals end up at the jail. Work release, education programs, GED, job skills training, mental health and medical treatment services cannot be effective without adequate space. For those inmates transported to other jails, these programs are not available! And the current system is hard on families and attorneys.

In my opinion, in almost 40 years of active work in alcoholism and drug addiction, we haven't seen the chemically addicted person until conditions are put in place to quit drinking and using or losing one's family; quits or dies; quits or loses a job. Options available to drunks and addicts: get sober and clean or institutionalization. Jail intervention programs can be effective tools to help someone with a chemical dependency and can be used very effectively.

Our current jail can't even provide detoxing and the follow up referral programs needed to help these sick individuals. They need our help. A new jail can provide critical help to them.

Please vote yes on the jail bond issue, help save family's and lives.

(This information furnished by Randy Jones)

ARGUMENT FOR:

Vote Yes on Measure 2-91!

Benton County needs a new jail!

The current, 38-year-old jail is no longer meeting our community's public safety needs. A new jail will meet the needs of the public safety system and will be more cost-effective long term.

The current jail is a bottleneck in our criminal justice system that impacts every agency and department. The new jail will have space to hold offenders accountable while also providing programs that focus on building skills, treatment, and rehabilitation.

Renting jail beds is a temporary solution that doesn't provide inmates with services to help end the cycle of criminal activity. Incarcerating offenders in other counties is hard on families. It's bad enough that the family members' loved one is serving a jail sentence, but by putting inmates in county jails 45 to 60 miles away, it is more difficult for inmates to interact easily with the support systems that can help them through rehabilitation. Additionally, offenders have limited opportunities to interact with their legal counsels.

A new jail will provide space to carry out greater mental health and addiction treatment services to those in need of them. The Benton County Sheriff's Office has had extensive conversations with Benton County Mental Health about a treatment model intended to address the impact of mental illness, as well as provide counseling services in the jail and mental health expertise on a more perpetual basis. This can't be done without the proper facilities to conduct those activities.

It is clear to us; Benton County needs a new jail!

We endorse Measure 2-91!

Albany Mayor Sharon Konopa

Corvallis Mayor Biff Traber; City Councilor Mike Beilstein

Monroe Mayor Frank Thayer

Philomath Mayor Rocky Sloan; City Councilor Angie Baca

*(This information furnished by
Citizens for a Safe Benton County)*

BENTON COUNTY MEASURE 2-91

ARGUMENT FOR:

Join us in supporting Ballot Measure 2-91, a bond measure to build a new jail facility in Benton County that will provide rehabilitation and intervention programs in addition to incarceration to help offenders get back on the right track.

Senator Sara Gelser, Senate District 8

"A safe and modern jail is critical to our community's continuum of public safety services. Now is the time to build a jail that safely meets our community's needs and facilitates quality services to prevent future crime."

"Please vote YES for a new Benton County Jail."

Representative Dan Rayfield, House District 16

"Our criminal justice system requires a functional jail to help protect the community and ensure justice to victims. At the same time, our jail should provide for intervention programs and job-training that will help keep people from returning to jail once released. The new jail will allow for both."

**It is time to provide a new facility.
Vote YES for 2-91!**

Our criminal justice system depends on it!

*(This information provided by
Citizens for a Safe Benton County)*

ARGUMENT FOR:

Vote Yes on Measure 2-91!

Necessary

A new jail is necessary to meet the needs of our community.

Keep officers and staff safe

Each day, I worry about the health and safety of all of our officers and deputies on patrol and in the jail. I'm looking forward to a jail where I can be more confident that our staff will remain healthy and safe while running an efficient and effective facility.

Treatment programs

We have an opportunity to change our jail from a place that warehouses offenders only to a place that provides the treatment and services to make sure they don't reoffend and come right back to jail. In addition, housing our inmates locally can provide connection to families and loved ones to help them through their rehabilitation process.

Location and appearance

The Philomath location is central to Benton County, and in an area zoned for industrial use, much farther away from neighborhoods and schools than the current jail that is within a three block radius of pre-schools, playgrounds, parks, the library and businesses. By design, it will be the safest place in town!

It is easily accessible by police departments and the Sheriff's Office. With efficient design for programs, work release and inmate housing it presents the best value for Benton County taxpayers. Better yet, the facility is similar in appearance to a modern government building instead of a jail. It will be a safe facility.

A facility that embraces our values

The jail will embrace our community's values throughout the design and operation of the facility. We will be able to keep our community safe and offenders locked away, while also emphasizing treatment and correcting behaviors that reduce criminal activity when people get out.

Please join me in voting Yes on 2-91!

Sheriff Scott Jackson

(This information furnished by Sheriff Scott Jackson)

BENTON COUNTY MEASURE 2-91

ARGUMENT AGAINST:

The primary purpose of our criminal justice system is to make our community safe. Will a new jail make us safer? Corvallis/Benton County has repeatedly been cited as one of the safest places to live in the entire USA. A new jail won't improve on that record.

By statute Oregon requires all jails to be safe and secure. The 2014 biennial state audit of our existing jail reported it to be "a very safe and secure facility." It got a 98.7% overall rating placing in the top tier of all Oregon jails. It is 100% compliant with state standards for: inmate communication; security and control; inmate health care; inmate programs and activities. That's an impressive record to be proud of.

A new jail won't be cheaper to operate. New costs will effectively offset any hoped for savings. That was the conclusion of the expert/consultants hired by the county. (DLR Group 2013).

The county has not done its homework in studying jail alternatives. The Oregon Department of Corrections recommended that counties like Benton go to a no-jail model with all inmates held out of the county. The county currently spends about \$4.5 million annually to house up to 80 inmates: 40 rented jail beds out of county and up to 40 in our own. Our sheriff's department July 2015 newsletter reports that the county spends \$1.1 to \$1.3 million annually to rent the 40 out of county jail beds including transportation costs. Simple arithmetic shows that renting 80 beds instead of 40 could result in substantial savings. Is this viable? The county doesn't know. It hasn't studied it.

The county did, however, authorize \$100,000 for a public relations firm to persuade voters to buy an expensive and unnecessary new jail.

Vote NO on the new jail.

For more discussion about the new jail and details about the above discussion, see:
NoBCjail.com

(This information furnished by David Grappo)

**THIS COLUMN INTENTIONALLY
LEFT BLANK**

CITY OF PHILOMATH MEASURE 2-90

BALLOT TITLE

CAPTION: A measure proposing annexation of the Hartz property

QUESTION: Shall the Hartz property, 11.75 acres located at 405 Landmark Drive and the northerly terminus of Landmark Drive, be annexed?

SUMMARY: Approval of this measure would annex approximately 11.75 acres of land zoned Industrial Park to the City of Philomath. The property to be annexed is generally located at 405 Landmark Drive, Philomath (T12S-R5W-Section 7BC, Tax Lots 12900 and 13000) and at the northerly terminus of Landmark Drive (T12S-R5W-Section 7B Tax Lot 2100). The parcel lies entirely within Benton County. The owner has not provided a conceptual plan for development. Any development proposal on this property shall require review and approval by the Planning Commission at a public hearing. Any future owner of this property who may propose a different development plan must pass through the same plan review process and public hearing. The City is not speaking in favor or against any conceptual plan.

EXPLANATORY STATEMENT

The Hartz Annexation consists of approximately 11.75 acres generally located at 405 Landmark Drive, Philomath, (T12S-R5W-Section 7BC, Tax Lots 12900 and 13000) and at the northerly terminus of Landmark Drive (T12S-R5W-Section 7B, Tax Lot 2100). The property is within the City's Urban Growth Boundary and zoned Industrial by Benton County. Upon annexation it would be zoned Industrial Park by the City.

This annexation proposal has complied with the City's review criteria. It is consistent with the policies of the Comprehensive Plan and other applicable planning policies and standards adopted by the City Council and the State of Oregon. The City has adequate capacity to service the subject property as anticipated with the Comprehensive Plan and Facility Master Plans.

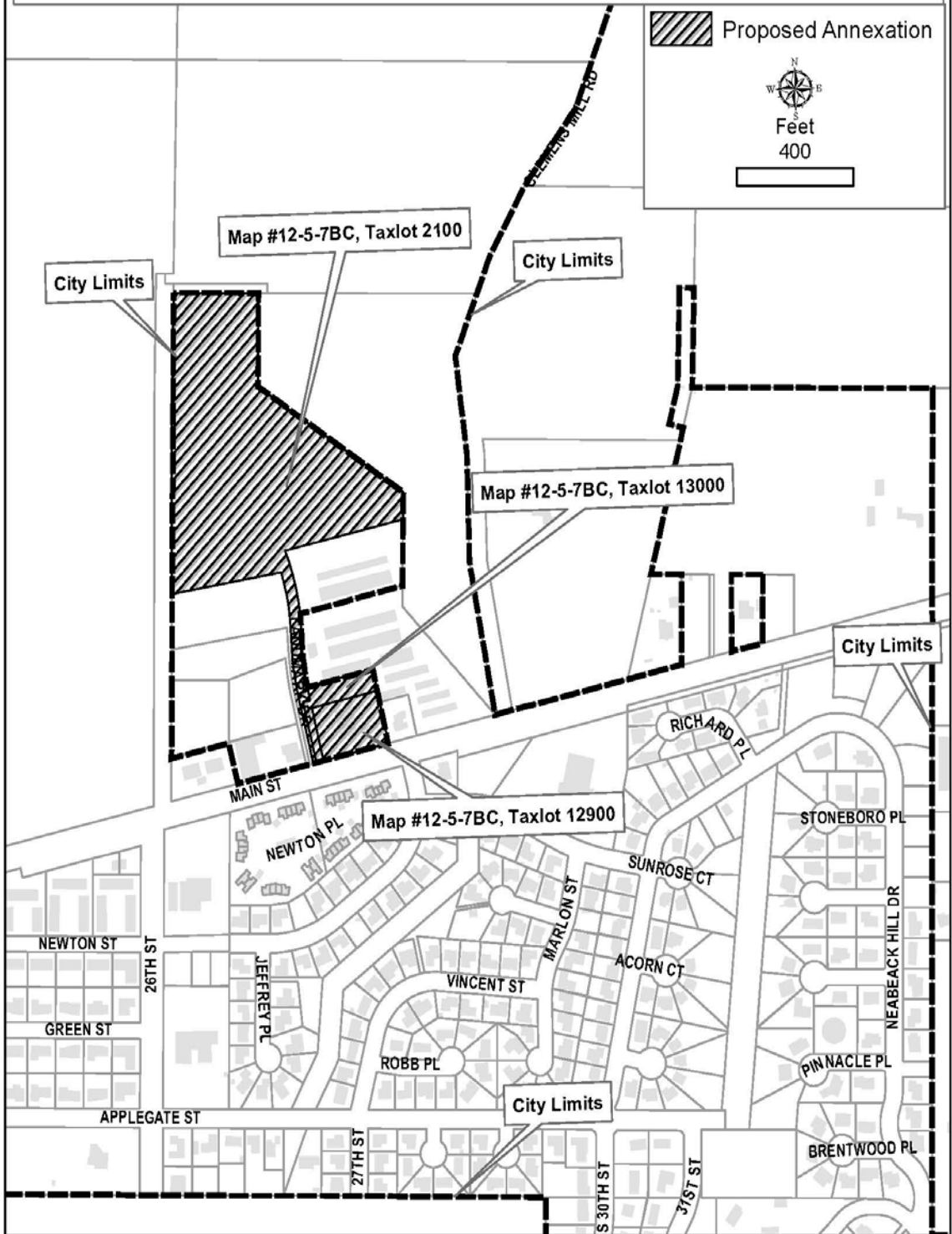
The applicant has not provided a conceptual plan for development. The conceptual plan associated with this annexation request may change. Any development proposal on this property shall require review and approval by the Planning Commission at a public hearing. Any future owner of this property who may propose a different development plan must pass through the same plan review process and public hearing. The City is not speaking in favor or against this conceptual plan.

(Submitted by City of Philomath)

NO ARGUMENTS WERE FILED

CITY OF PHILOMATH MEASURE 2-90

Proposed Philomath Hartz Annexation



CHINOOK DRIVE ROAD DISTRICT MEASURE 2-92

BALLOT TITLE**CAPTION: Request to renew a five-year operations local option tax**

QUESTION: Do you want a five-year local option tax at \$0.85 per \$1,000 assessed value beginning 2016-17 for road district operations? This measure renews the current local option tax.

SUMMARY: The Chinook Drive Special Road District's existing local option tax will expire after fiscal year 2015-16. This measure will allow that tax to be renewed until 2020-21.

If the measure passes, the total tax for the road district would continue to be the permanent rate of \$0.9533 plus the local option of \$0.85 for a total of \$1.8033 per \$1,000 assessed value. This local option tax will first be assessed in November 2016 for the 2016-17 fiscal year, and will last be assessed in November 2020 for the 2020-21 fiscal year.

The total amount of money to be raised each fiscal year is \$41,744 in 2016-17, \$42,996 in 2017-18, \$44,286 in 2018-19, \$45,615 in 2019-20, and \$46,983 in 2020-21 for a total of \$221,624. The estimated tax cost for this measure is an ESTIMATE ONLY based on the best information available from the assessor at the time of the estimate.

EXPLANATORY STATEMENT

The Chinook Drive Road District currently has a Local Option Tax of \$.85/\$1,000 assessed value which expires this year. This measure requests the extension of the current Local Option Tax at the current rate for a five year period, from 2017 through 2021. The Local Option Tax revenues comprise approximately one half of the Road District operating budget. Proceeds from the tax are used for road re-surfacing (grading, rock, emergency, and surface spot repairs), annual dust control, snow removal, pothole repair, and minor drainage and land control improvements intended to extend road surface life and improve safety. With approximately five and a half miles of road to maintain, this work cannot continue at the existing level with the budget provided by the permanent rate alone.

(Submitted by Chinook Drive Road District)

NO ARGUMENTS AGAINST THIS MEASURE WERE FILED.

ARGUMENT FOR:

The Chinook Drive Road District consists of approximately five miles of gravel and three-fourths mile of chip sealed road. At the Annual Budget Meeting, several areas were identified for repairs that are not being fully addressed due to more urgent work. Backlog includes several blocked/crushed culverts, significant ditching and sloping to reduce erosion and potholes, widening in spots to comply with fire access assessments, and several high traffic areas requiring significant substrate and resurfacing improvements. The Road District prioritizes repairs and maintenance based on keeping the roads usable, amount of traffic, cost, safety, and the potential for additional road damage if not fixed. Emergency projects arise throughout the year when critical problems occur due to weather or other factors. The existing Local Options Tax has provided sufficient money to perform emergency repairs, some preventative repairs, and routine maintenance such as dust control, sanding and snow removal, general grading and surface gravel, and to make progress on the most critical of the backlog over the last five year period. Unfortunately, our roads are old and the maintenance requirements from wear and natural causes strain our ability to keep pace even with the Local Option Tax revenues.

The Road District annual budget without the Local Options Tax would be about half of the current amount. The District's liability insurance, State fees, and legally mandated expenditures are about one-third of the budget with just the Permanent Tax. The amount available for repair and maintenance would be roughly one third of the current budget. Based on the last eight years of data, the Permanent Tax would be sufficient for emergency repairs and a limited amount for general gravel and grading. However, it would not be sufficient to cover dust control, sanding and snow removal, ditching, culverts, resurfacing, preventive projects, backlog, or most routine maintenance. At the June 2015 Budget Meeting, attendees unanimously approved renewing the Local Option Tax at the current rate.

We urge you to support this measure and continue the existing Local Option Tax at the current rate. Vote YES.

Submitted by Chinook Special Road District Commissioners
John Connolly
Milt Larson
Adam Miller
Barbara Schatz

*(This information furnished by
Chinook Special Road District Commissioners)*

Registering to Vote

To vote in Oregon you need to be registered in the county where you reside.

You can register if you can answer yes to these three questions:

- Are you a resident of Oregon?
- Are you a US citizen?
- Are you at least 17 years of age?

If you are 17 years of age, you will not receive a ballot until an election occurs on or after your 18th birthday.

How to register

You can register to vote online at www.oregonvotes.gov or you can get a voter registration card at any of the following places:

- Benton County Elections Office
- any county elections office
- the Secretary of State's Office
- some state agencies such as the Division of Motor Vehicles (DMV)
- a voter registration drive

You can fill the card out in person or send it in by US mail. You can also print out a registration card online at: www.oregonvotes.gov.

What information is required to register?

To complete your registration you will provide your:

- full legal name
- home address
- date of birth
- signature
- valid identification

Updating your voter registration

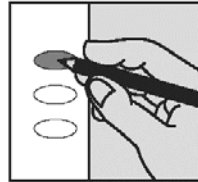
Once you have registered, you are responsible for keeping your information up to date. You can do this online at www.oregonvotes.gov or by completing and returning a voter registration card with the new information. You should update your registration if you do any of the following:

- change your home address
- change your mailing address
- change your name
- change your signature
- want to change or select a political party
- will be away from home on election day

How to Cast Your Ballot

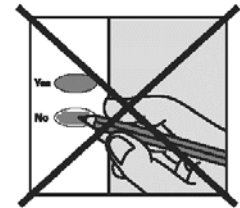
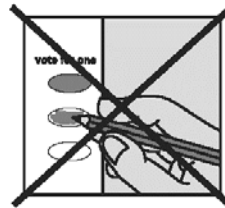
check your ballot!

Use a pen or pencil to fill in the ovals next to your choices.



If you vote for more candidates than allowed, or if you vote **both Yes and No** on a measure, it is called an overvote.

Your vote **will not count** for that candidate or measure.



You do not have to vote on all contests. Those you do vote on will still count.

Contact Benton County Elections to request a replacement ballot if:

- you make a mistake
- your ballot is damaged or spoiled
- you lose your ballot

Benton County Elections

Phone: (541) 766-6756

Fax: (541) 766-6757

TTY: (541) 766-6080

Email: elections@co.benton.or.us

1 866 ORE VOTE / 673 8683

Se Habla Español

www.oregonvotes.gov

OREGON VOTER REGISTRATION FORM



SEL 500 rev 01/15

qualifications

Are you a citizen of the United States of America? yes no
 Are you at least 17 years of age? yes no
 If you mark no in response to either of these questions, do not complete this form.

personal information *required information

_____ last name* first* middle
 _____ Oregon residence address (include apt. or space number)* city* zip code*
 _____ date of birth (month/day/year)* county of residence
 _____ phone email
 _____ mailing address (required if different than residence) city/state zip code

Oregon Driver's License/ID number

Provide a valid Oregon Driver's License, Permit or ID:

I do not have a valid Oregon Driver's License/Permit/ID.
 The last 4 digits of my Social Security Number (SSN) are:

x x x - x x -

I do not have a valid Oregon Driver's License/Permit/ID or a
 SSN. I have attached a copy of acceptable identification.

political party

- Not a member of a party
- Americans Elect
- Constitution
- Democratic
- Independent
- Libertarian
- Pacific Green
- Progressive
- Republican
- Working Families
- Other _____

signature I swear or affirm that I am qualified to be an elector and I have told the truth on this registration.

sign here _____ date today _____

! If you sign this card and know it to be false, you can be fined up to \$125,000 and/or imprisoned for up to 5 years.

registration updates Complete this section if you are updating your information.

_____ previous registration name previous county and state
 _____ home address on previous registration date of birth (month/day/year)

BENTON COUNTY OFFICIAL BALLOT DROPSITES

BENTON COUNTY ELECTIONS OFFICE

Basement of County Courthouse
120 NW 4th St Rm 13, Corvallis OR 97330
541-766-6756
Mon thru Fri 8:00 am to 5:00 pm
Election Day 7:00 am to 8:00 pm

24-HOUR OUTSIDE DROP BOXES

BENTON COUNTY COURTHOUSE

Courthouse lawn on Fourth Street
120 NW 4th St, Corvallis OR 97330

BENTON COUNTY COURTHOUSE

Accessible entrance on Fifth Street side
120 NW 4th St, Corvallis OR 97330

BENTON COUNTY COURTHOUSE

Across the street on Fifth Street
180 NW 5th St, Corvallis OR 97330

WELLS FARGO BANK

Timberhill Shopping Center
2543 NW Kings Blvd, Corvallis OR 97330

BENTON COUNTY SUNSET BUILDING

Drop box in parking lot
4077 SW Research Way, Corvallis OR 97333

LINCOLN HEALTH CENTER

Drop box in parking lot
121 SE Viewmont Ave, Corvallis OR 97333

NORTH ALBANY SHOPPING CENTER

Drop box in front of former Ray's location
621 Hickory Ave NW, Albany OR 97321

MONROE COMMUNITY LIBRARY

Drop box in parking lot
380 N 5th St, Monroe OR 97456

PHILOMATH PUBLIC LIBRARY

Drop box near main entrance
1050 Applegate St, Philomath OR 97370

INSIDE BALLOT DROP BOXES

CORVALLIS PUBLIC LIBRARY

645 NW Monroe Ave, Corvallis OR 97330
541-766-6793
Mon thru Thu 10:00 am to 8:00 pm
Fri thru Sat 10:00 am to 6:00 pm
Sun 1:00 pm to 5:00 pm

OSU VALLEY LIBRARY

121 The Valley Library, Corvallis OR 97331
541-737-3331
Sun thru Sat 10:00 am to 10:00 pm

SENIOR CITIZENS CENTER OF CORVALLIS

2601 NW Tyler Ave, Corvallis OR 97330
541-766-6959
Mon thru Fri 8:00 am to 4:00 pm
Election Day 8:00 am to 8:00 pm

LBCC BENTON CENTER

757 NW Polk Ave, Corvallis OR 97330
541-757-8944
Mon thru Thu 8:00 am to 8:00 pm
Fri 8:00 am to 4:00 pm

CITY LIMITS MARKET

5800 NW Hwy 99W, Corvallis OR 97330
541-745-7194
Mon thru Thu 6:30 am to 8:00 pm
Fri 6:30 am to 8:30 pm
Sat 8:00 am to 8:30 pm
Sun 8:00 am to 7:30 pm

JOHN BOY'S ALSEA MERCANTILE STORE

186 E Main St, Alsea OR 97324
541-487-4462
Mon thru Sat 6:00 am to 8:00 pm
Sun 7:00 am to 8:00 pm

Benton County Elections
120 NW 4th St Rm 13
Corvallis, OR 97330

NONPROFIT
CAR-RT SORT
U.S. Postage
PAID
Portland, OR
Permit No. 692



RESIDENTIAL CUSTOMER

OFFICIAL BENTON COUNTY
VOTERS' PAMPHLET
NOVEMBER 3, 2015 SPECIAL ELECTION

