



OFFICIAL VOTERS' PAMPHLET

PRIMARY ELECTION
MAY 17, 2016

The publication and distribution of this pamphlet is provided by the County Clerk. The candidate and measure information within was provided by candidates, cities, districts and other interested parties that chose to participate in this portion of the election process.

Benton County:

At Your Service

Every Day



BOARD OF COMMISSIONERS

205 NW Fifth Street
P.O. Box 3020
Corvallis, OR 97339-3020
(541) 766-6800
FAX (541) 766-6893

Dear Fellow Benton County Voter:

On Tuesday, May 17, 2016, a Primary Election will be held in Benton County. Major party voters will have the opportunity to nominate candidates to the November General Election ballot for partisan offices. All voters will have the opportunity to vote on non-partisan offices, as well as, state and local measures affecting them.

Candidates have an opportunity to issue a statement about their candidacy for inclusion in this pamphlet. Measure proponents and opponents have the opportunity to submit arguments for or against local measures that will appear on the ballots of voters that will be affected by the measure.

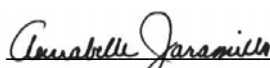
The County Clerk publishes and distributes this Voters' Pamphlet to provide candidates and those interested in local measures an opportunity to share their message and views with voters. You will also find information on registering to vote, applying for absentee ballots, marking your ballot, obtaining a replacement ballot and returning your ballot.

We hope this publication will help you become better informed about the candidates and measures in this election. This pamphlet and additional election related information will be made available on the Elections Division website at www.co.benton.or.us/elections.

You can drop your ballot at one of the ballot drop site locations listed in this pamphlet. Please contact the Benton County Elections Division located in the basement of the historic Benton County Courthouse at 120 NW 4th Street in Corvallis for additional assistance.

Please Note: All ballots, whether mailed or delivered in-person, *must be received at an official ballot drop site within the State of Oregon no later than 8:00 p.m. on May 17, 2016, Primary Election Day.*

Sincerely,



Commissioner



Commissioner



Commissioner

VOTE

TABLE OF CONTENTS

2	Letter from the Commissioners
3	Table of Contents
	COUNTY COMMISSIONER, POSITION 2
4	Jay Dixon, Democrat
4	Xanthippe (Xan) Augerot, Democrat
5	Jerry J Jackson Sr, Republican
	COUNTY COMMISSIONER, POSITION 3
6	Annabelle Jaramillo, Democrat
6	Paul Cauthorn, Republican
7	Voter Registration Form
	Measure 22-141
8	City of Albany Measure 22-141 Ballot Title and Explanatory Statement
8	City of Albany Measure 22-141 Argument in Favor
	Measure 2-93
9	Philomath Fire and Rescue Measure 2-93 Ballot Title and Explanatory Statement
10	Register to Vote
10	How to Cast a Ballot
11	Benton County Official Ballot Dropsites

Information provided in statements or arguments submitted by a candidate, a political party, an assembly of electors or a person supporting or opposing a measure have not been verified for accuracy or truth and do not constitute an endorsement by Benton County.

Benton County Elections & Passports Office

Phone: 541-766-6756

Fax: 541-766-6757

Website: www.co.benton.or.us/electionsE-mail: elections@co.benton.or.us

COUNTY COMMISSIONER, POSITION 2



JAY DIXON

Democrat

Occupation: Benton County Commissioner

Occupational Background: Small business owner; financial executive; criminal justice center director; Lieutenant, Seattle Police

Educational Background: BS, University of San Francisco; Pacific Program, University of Oregon

Prior Governmental Experience: Past chairman of Corvallis Budget Commission, Cascades West Council of Governments and Willamette Criminal Justice Council; Linn-Benton Housing Authority Commissioner; Corvallis School Board. Participation on six local non-profit boards focused on children, the arts, animals, business and the homeless

Re-elect Jay Dixon

Experience We Know. Leadership We Value.

Elected officials run on their records. Here's Jay Dixon's.

Economy – Implemented a countywide economic development strategy; promoted county "buy local" policy; service on the Corvallis Economic Development Commission; past president of the Corvallis Chamber of Commerce

Education – Served on OSU/Corvallis Collaboration Committee; supported Corvallis and Philomath outdoor schools; former Corvallis School Board member

Environment – Opened Fort Hoskins Historical Park, Beazell Memorial Forest and Fitton Green Natural Area, adding 1,000 acres of open space to Benton County

Health Care – Helped secure Benton County's top ranking among Oregon counties for healthy living; secured federal funds to provide low-cost health care to all county residents and open clinics in Corvallis, Alsea and Monroe; represents Benton County on the Intercommunity Health Network Coordinated Care Organization Board

Housing – Supports Linn-Benton Housing Services and Benton Habitat for Humanity efforts to provide affordable housing; leader on the Committee for the 10-year plan to End Homelessness in Benton County

Public Safety – Helped prevent and reduce crime while serving on the Federal Advisory Committee on Juvenile Justice, chairing Oregon's Juvenile Crime Prevention Advisory Committee, serving on Oregon's Commission on Children and Families and Community Corrections Commission and supporting our drug treatment court

Endorsements

State Sen. Sara Gelser, Benton County District Attorney John Haroldson, Benton County Sheriff Scott Jackson, Benton County Commissioner Annabelle Jaramillo, Albany Mayor Sharon Kanopa, Julie Manning, U.S. Sen. Jeff Merkley, State Rep. Dan Rayfield, Philomath Mayor Rocky Sloan, Monroe Mayor Frank Thayer, Curtis Wright, U.S. Sen. Ron Wyden

"I am honored to serve you and welcome your vote to continue."

www.jaydixon2016.com

(This information furnished by Jay Dixon)

The above information has not been verified for accuracy by Benton County.



XAN AUGEROT

Democrat

Occupation: Consultant/Proprietor, Pangaea Environmental

Occupational Background: Executive Director, Marys River Watershed Council; Proprietor; Pangaea Environmental; Vice-President for Science, Co-Director of State of the Salmon Program, Director of Conservation Programs at Wild Salmon Center; Research Assistant and Instructor, Oregon State University; Assistant to the Director, Washington Sea Grant

Educational Background: Oregon State University Department of Geosciences. Ph.D. **Geography**, University of Washington School of Marine Affairs. M.A. **Marine Affairs**, University of Washington Department of Economics. B.A.

Economics, with honors

Prior Governmental Experience: Grants Committee, Benton Community Foundation; Curriculum Committee, Leadership Corvallis; Treasurer, Ten Rivers Food Web; Oregon Sea Grant Advisory Council; Friends of Corvallis-Benton County Library; 4-H Wildlife Steward; Knauss Congressional Fellow

Energy and Communication

It is time for Benton County to elect new, energetic leadership. Xan will serve Benton County with passion, integrity and skill. An active member of the Corvallis community, Xan is in touch with community issues and interests. Her directorship of Marys River Watershed Council gave Xan a depth and breadth of knowledge of issues affecting landowners across Benton County. Xan will act with energy and integrity to represent all of Benton County.

Sustainability for the Future

In order for Benton County to prosper, we must maintain the quality of life and community we value, expect and deserve. This means supporting agriculture and forestry, while we foster innovative technical and creative businesses. The population of Benton County will increase over the next decade, stressing our infrastructure and natural resources, including water. Xan has the skills and expertise to forge partnerships with the private sector and government organizations to address new challenges head on.

Endorsed by:

Vince Adams, Tom Denison, Bill Gellatly, Robert Heald, Richard Hervey, Elizabeth Kerle, Jamie Kitzrow, Mark Kosmerl, Ben Lilley, Michael McGowen, Lisa Schwartz, Sally Shaw, Lee Sherman, Phil Sollins

(This information furnished by Xan Augerot for Commissioner)

The above information has not been verified for accuracy by Benton County.

COUNTY COMMISSIONER, POSITION 2



**JERRY J
JACKSON, SR**

Republican

Occupation: Business Owner; Code Enforcement Officer, Polk County

Occupational Background: Polk County Community Development Manager; Community Service/Work Release Coordinator; Business Owner; US Army

Educational Background: Ford Family Foundation Leadership Course; Oregon State University, Political Science; Linn County Community College; Trend College, Certificate in Travel and Tourism Management; ASFPM Certified Floodplain Manager

Prior Governmental Experience: City of Philomath, Budget Chair; Former Philomath City Council President; Budget/Finance/Administration Board and Ordinance Committees/Budget/Police Committee; Past Polk County Community Development Manager; Community Service/Work Release Coordinator; School Board Member, St. Mary's School

Volunteer Activities:

Benton County Republican Chair; Knights of Columbus; Coach, Cub Scout Leader

REAL GOVERNMENT EXPERIENCE

It is vital to have a Commissioner who understands government and has the experience to make sound decisions. Working with Oregon Land Use Laws as a Code Enforcement Officer gives me the tools and understanding to make these decisions.

REPRESENTATION FOR ALL CITIZENS

Sustainability

The Willamette Valley is blessed with many natural resources. It is time to let the natural resources of Benton County return prosperity to the community in a responsible and sustainable manner.

Environment

Benton County is known for being at the forefront in protecting our environment. I will continue Benton County's great tradition for now and for the future generations.

Economics

Benton County has every element to thrive economically. Government, through reasonable taxes, regulation, and a can do attitude can ensure a climate of success and vibrancy. I will do that!

www.electjerryjackson.com

(This information furnished by Jerry J. Jackson, Sr./
Elect Jackson Commissioner PAC)

COUNTY COMMISSIONER, POSITION 3



**ANNABELLE
JARAMILLO**

Democrat

Occupation: Benton County Commissioner

Occupational Background: Citizens' Representative for Governor Kitzhaber, research botanist; civil rights advocate; teacher

Educational Background: B.S., M.S. - Biology, Portland State University

Prior Governmental Experience: Forty years - local, state and federal service. Association of Oregon Counties Board, Legislative Committee, Public Lands and Energy/ Environment Subcommittees; Council of Forest Trust Land Counties; Governor's Law Enforcement Contact Committee; Equality Task Force; Judicial Fitness and Disabilities Commission; Cascade West Area Commission on Transportation; Bureau of Land Management Resource Advisory Committee; Coast Range Province Advisory Committee; Siuslaw National Forest Resource Advisory Committee; Pacific Northwest Research Station
Community Service: Community Services Consortium; American Leadership Forum; American Civil Liberties Union, Economic Vitality Partnership

Family: Richard Medley, spouse; three children, eleven grandchildren

Re-Elect Commissioner Annabelle Jaramillo

Benton County government is a leader among Oregon's counties! With them and our state and federal partners we have fostered relationships to get things done. I have demonstrated leadership and sound stewardship for Benton County.

We have worked to create a government that supports our communities. Through federally funded health centers we provide for those in need. We care for natural areas and conserve habitats with willing landowners. Fiscal challenges are met with diligence and creativity. We invest in economic prosperity through partnerships with others.

"I want to continue this work! We live in challenging times, when community needs are at an all-time high. I am committed to Benton County where we and future generations can experience rich and rewarding lives. I appreciate your past support; I ask that you support me once again."

Supporters

U.S. Senator Ron Wyden; U.S. Senator Jeff Merkley; State Senator Sara Gelsler; State Rep. Dan Rayfield; District Attorney John Haroldson; Sheriff Scott Jackson; Commissioner Jay Dixon; Sharon Konopa, Mayor - Albany; Biff Traber, Mayor - Corvallis; Frank Thayer, Mayor - Monroe; Rocky Sloan, Mayor - Philomath; And many more!

Re-Elect Commissioner Annabelle Jaramillo

(This information furnished by Jaramillo for Commissioner Committee)

The above information has not been verified for accuracy by Benton County.



**PAUL
CAUTHORN**

Republican

Occupation: Owner of Oregon Nutrients, LLC; Board of Advisors, DulsEnergy, Inc.

Occupational Background: Real Estate Investment and Management

Educational Background: Studied Computer Science and Art at Lane Community College

Prior Governmental Experience: I have always been willing to **push government for transparency and fiscal responsibility.**

My family settled in Benton County in the 1840's with Johnson Mulkey establishing a ranch on Bald Hill. Benton County is in my blood. My Cauthorn relatives played a pivotal role in the development of the institution now known as Oregon State University.

Like my ancestors, I take direct action on issues that matter to the lives of Benton County citizens.

A couple of recent examples:

Voters should decide important issues. I stood up to the full Corvallis City Council and ran a referendum campaign, which gave voters the opportunity to soundly reject the council's parking ordinance. My efforts have **saved Benton County residents tens of thousands of dollars** in parking tickets and permit fees.

Government must be held accountable. Farmers were threatened with eminent domain seizure of their farmland for an urban recreational use. The county wanted to pave Exclusive Farm Use zoned land and take it out of food production. I researched the situation and exposed significant issues that were brought to the attention of the county and state agencies. My efforts contributed to halting Benton County's flawed plan.

Each of us can make a difference by taking direct actions where we see a need. We don't need to be told where to help. We all see needs around us on a daily basis. This could be picking up litter, helping your older neighbor so she can stay in her home, simply holding the door for someone and **sharing a smile**, or running for elected office.

We can work together to make Benton County great. Please feel free to contact me at electcauthorn@gmail.com. I welcome your ideas and concerns.

(This information furnished by Paul Cauthorn)

The above information has not been verified for accuracy by Benton County.

CITY OF ALBANY MEASURE 22-141

BALLOT TITLE

CAPTION: Renewal of the Ambulance, Fire, and Police Local Option Tax

QUESTION: Shall Albany impose \$1.15 per \$1,000.00 assessed value for Ambulance, Fire, Police operations for five more years beginning 2016-2017? This measure renews current local option taxes.

SUMMARY: The City plans to use tax revenue from this measure to continue funding for Firefighter/EMTs, fire marshal, and emergency services positions to maintain fire prevention and public education at current levels, and continue funding for Police Officers, Community Service Officers, and communications and crime analyst positions together with related equipment and training. Taxes will also continue to be used to pay inflationary operating costs for the Fire/Ambulance and Police Departments.

The proposed rate will net approximately \$3,141,908.00 in 2016-2017, \$3,465,628.00 in 2017-2018, \$3,794,926.00 in 2018-2019, \$3,984,671.00 in 2019-2020, and \$4,183,905.00 in 2020-2021 for a total of \$18,571,038.00.

The estimated tax cost for this measure is an ESTIMATE ONLY based on the best information available from the county assessor at the time of estimate and may reflect the impact of early payment discounts, compression and the collection rate.

EXPLANATORY STATEMENT

The City plans to use tax revenue from this measure to continue funding for Firefighter/EMTs, fire marshal, and emergency services positions to maintain fire prevention and public education at current levels, and continue funding for Police Officers, Community Service Officers, and communications and crime analyst positions together with related equipment and training. Taxes will also continue to be used to pay inflationary operating costs for the Fire/Ambulance and Police Departments.

The proposed rate will net approximately \$3,141,908 in 2016-2017, \$3,465,628 in 2017-2018, \$3,794,926 in 2018-2019, \$3,984,671 in 2019-2020, and \$4,183,905 in 2020-2021 for a total of \$18,571,038.

The estimated tax cost for this measure is an ESTIMATE ONLY based on the best information available from the county assessors at the time of estimate and may reflect the impact of early payment discounts, compression and the collection rate.

(Submitted by City of Albany)

**NO ARGUMENTS AGAINST THIS
MEASURE WERE FILED**

ARGUMENT FOR:

**Citizens for a Safer Albany
Vote -----Yes to RENEW
Albany's Ambulance, Fire, & Police Levy**

**This ballot question is for a
continuing levy and will not cost you
more money.**

In 2002, the voters of Albany approved a levy to add critical fire and police positions to improve our level of public safety services. This levy has been renewed two times.

**This levy is for the continuance of an existing tax.
State law only allows levies for a maximum five
years and they must be renewed by the voters each
time to continue the levies.**

The approval of this levy is vital to Albany's
ambulance, fire and police services.
Without this levy, 17 fire and police
positions could be eliminated.

**This levy is to retain Albany's current
ambulance, fire and police services.**

"Think of your community and home. As a small business owner and long-time community supporter, we care about your safety. Join us in voting **YES** for Albany's Ambulance, Fire, and Police Levy."

--Janel and Matt Bennett

"If the Ambulance, Fire, Police Levy fails, staffing for the departments will drastically effect service levels. The drop in staffing will put the safety of the community at risk. Join me in voting YES to keep our community safe."

--Greg Roe

"Our police officers and staff are committed to providing the highest level of service to our community."

--Jay and Teresa Burcham

**Citizens for a Safer Albany was formed
by volunteer community leaders
to campaign for your community's safety.
This measure is to continue this level of service.**

(This information furnished by
Citizens for a Safer Albany, PAC)

PHILOMATH FIRE & RESCUE MEASURE 2-93

BALLOT TITLE

CAPTION: Philomath Fire & Rescue District General Obligation Bond

QUESTION: Shall the District issue general obligation bonds not to exceed \$3,515,000? If the bonds are approved, they will be payable from taxes on property or property ownership that are not subject to the limits of sections 11 and 11b, Article XI of the Oregon Constitution.

SUMMARY: If approved, this measure would provide funds for capital costs including:

- The purchase of fire apparatus;
- Upgrade existing fire apparatus and equipment;
- Purchase firefighting equipment and medical equipment; and,
- Make additions to, furnish, equip and renovate existing public safety facilities and pay bond issuance costs.

The Bonds would mature not later than ten (10) years from the date of issuance. The measure is estimated to cost taxpayers an average of \$0.50 per thousand of assessed value each year. For the owner of a home or property owner, the estimated annual average cost would be \$50.00 per \$100,000 of taxable assessed value.

EXPLANATORY STATEMENT

BACKGROUND/HISTORY

Located in the center of Benton County, Philomath Fire & Rescue ("PF&R") was formed as a result of a merger of the City of Philomath Fire Department and the Philomath Rural Fire Protection District #4 in 1985.

The District covers approximately 58 square miles and provides emergency medical services, fire suppression and prevention, specialized rescue, and HazMat services for approximately 9,000 citizens.

Operating out of three stations (Philomath, Wren and Inavale) providing fire suppression, prevention, public education, investigation, training, advanced life-support, and associated specialized services, PFR responds to approximately 700 calls for service each year, employs 6 fire/EMS career personnel, maintains up to 42 volunteer/student firefighters, strategically deploys 17 vehicles district-wide and has an annual operating budget of approximately \$1 million.

APPARATUS/EQUIPMENT REPLACEMENT AND FACILITIES IMPROVEMENTS

The board of Directors for PF&R recently adopted a Master Plan which defines needs for apparatus, equipment, facilities, staffing, programs and finances for the next 20 years. Supporting documentation for the Master Plan includes comprehensive apparatus and equipment replacement schedules addressing vehicle types, replacement cycles, years of service, cost of operation, reliability, cost of repair and capability to meet current and future fire safety standards, as well as facilities needs to address current operations and proposed changes to the current staffing model. Details of the Master Plan are available on the District's website at www.philomathfire.com.

The Master Plan outlines funding goals for apparatus and equipment replacement in conjunction with developing a financial plan that maintains response times and service levels to the residents of the District within the constraints of the annual operating budget. Proceeds of the Bond Measure would assist the District in replacing aging apparatus and specialized equipment, reduce firefighter safety risks and meet the demands of the existing and expanding service area, as well as upgrade existing facilities to address the changing structure of the organization and comply with ADA requirements.

GENERAL OBLIGATION BOND LEVY OBJECTIVE

If approved, this measure would provide funds to:

- Purchase emergency response apparatus;
- Upgrade existing fire apparatus and equipment;
- Purchase firefighting equipment and medical equipment;
- Make additions to, furnish, equip and renovate existing public safety facilities; and
- Pay bond issuance costs.

ESTIMATED TAX IMPACT

The Bonds would mature not later than ten (10) years from the date of issuance and may be issued in more than one series. The measure is **estimated** to cost taxpayers an average of \$0.50 per thousand of assessed value each year. For the owner of a home or property owner, the **estimated** annual average cost would be \$50.00 per \$100,000 of taxable assessed value.

The estimated tax cost for this measure is an **ESTIMATE ONLY**, based on the best information available from the county assessor at the time of the estimate.

(Submitted by Philomath Fire & Rescue)

**NO ARGUMENTS FOR OR AGAINST
THIS MEASURE WERE FILED**

Registering to Vote

To vote in Oregon you need to be registered in the county where you reside.

You can register if you can answer yes to these three questions:

- Are you a resident of Oregon?
- Are you a US citizen?
- Are you at least 17 years of age?

If you are 17 years of age, you will not receive a ballot until an election occurs on or after your 18th birthday.

How to register

You can register to vote online at www.oregonvotes.gov or you can get a voter registration card at any of the following places:

- Benton County Elections Office
- any county elections office
- the Secretary of State's Office
- some state agencies such as the Division of Motor Vehicles (DMV)
- a voter registration drive

You can fill the card out in person or send it in by US mail. You can also print out a registration card online at: www.oregonvotes.gov.

What information is required to register?

To complete your registration you will provide your:

- full legal name
- home address
- date of birth
- signature
- valid identification

Updating your voter registration

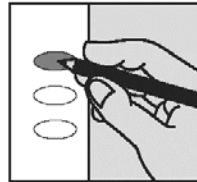
Once you have registered, you are responsible for keeping your information up to date. You can do this online at www.oregonvotes.gov or by completing and returning a voter registration card with the new information. You should update your registration if you do any of the following:

- change your home address
- change your mailing address
- change your name
- change your signature
- want to change or select a political party
- will be away from home on election day

How to Cast Your Ballot

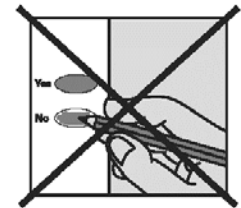
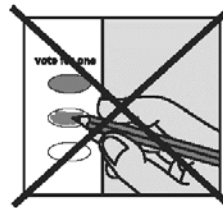
check your ballot!

Use a pen or pencil to fill in the ovals next to your choices.



If you vote for more candidates than allowed, or if you vote **both Yes and No** on a measure, it is called an overvote.

Your vote **will not count** for that candidate or measure.



You do not have to vote on all contests. Those you do vote on will still count.

Contact Benton County Elections to request a replacement ballot if:

- you make a mistake
- your ballot is damaged or spoiled
- you lose your ballot

Benton County Elections

Phone: (541) 766-6756

Fax: (541) 766-6757

TTY: (541) 766-6080

Email: elections@co.benton.or.us

1 866 ORE VOTE / 673 8683

Se Habla Español

www.oregonvotes.gov

BENTON COUNTY OFFICIAL BALLOT DROPSITES

BENTON COUNTY ELECTIONS OFFICE

Basement of County Courthouse
120 NW 4th St Rm 13, Corvallis OR 97330
541-766-6756
Mon thru Fri 8:00 am to 5:00 pm
Election Day 7:00 am to 8:00 pm

24-HOUR OUTSIDE DROP BOXES

BENTON COUNTY COURTHOUSE

Courthouse lawn on Fourth Street
120 NW 4th St, Corvallis OR 97330

BENTON COUNTY COURTHOUSE

Accessible entrance on Fifth Street side
120 NW 4th St, Corvallis OR 97330

BENTON COUNTY COURTHOUSE

Across the street on Fifth Street
180 NW 5th St, Corvallis OR 97330

WELLS FARGO BANK

Timberhill Shopping Center
2543 NW Kings Blvd, Corvallis OR 97330

BENTON COUNTY SUNSET BUILDING

Drop box in parking lot
4077 SW Research Way, Corvallis OR 97333

LINCOLN HEALTH CENTER

Drop box in parking lot
121 SE Viewmont Ave, Corvallis OR 97333

NORTH ALBANY SHOPPING CENTER

Drop box in front of former Ray's location
621 Hickory Ave NW, Albany OR 97321

MONROE COMMUNITY LIBRARY

Drop box in parking lot
380 N 5th St, Monroe OR 97456

PHILOMATH PUBLIC LIBRARY

Drop box near main entrance
1050 Applegate St, Philomath OR 97370

INSIDE BALLOT DROP BOXES

CORVALLIS PUBLIC LIBRARY

645 NW Monroe Ave, Corvallis OR 97330
541-766-6793
Mon thru Thu 10:00 am to 8:00 pm
Fri thru Sat 10:00 am to 6:00 pm
Sun 1:00 pm to 5:00 pm

OSU VALLEY LIBRARY

121 The Valley Library, Corvallis OR 97331
541-737-3331
Sun thru Sat 10:00 am to 10:00 pm

SENIOR CITIZENS CENTER OF CORVALLIS

2601 NW Tyler Ave, Corvallis OR 97330
541-766-6959
Mon thru Fri 8:00 am to 4:00 pm
Election Day 8:00 am to 8:00 pm

LBCC BENTON CENTER

757 NW Polk Ave, Corvallis OR 97330
541-757-8944
Mon thru Thu 8:00 am to 8:00 pm
Fri 8:00 am to 4:00 pm

CITY LIMITS MARKET

5800 NW Hwy 99W, Corvallis OR 97330
541-745-7194
Mon thru Thu 6:30 am to 8:00 pm
Fri 6:30 am to 8:30 pm
Sat 8:00 am to 8:30 pm
Sun 8:00 am to 7:30 pm

JOHN BOY'S ALSEA MERCANTILE STORE

186 E Main St, Alsea OR 97324
541-487-4462
Mon thru Sat 6:00 am to 8:00 pm
Sun 7:00 am to 8:00 pm

Benton County Elections
120 NW 4th St Rm 13
Corvallis, OR 97330



OFFICIAL BENTON COUNTY
VOTERS' PAMPHLET
MAY 17, 2016 PRIMARY ELECTION



THIS CONCLUDES THE BENTON COUNTY
PORTION OF THE VOTERS' PAMPHLET