



OFFICIAL VOTERS' PAMPHLET

**GENERAL ELECTION
NOVEMBER 8, 2016**

The publication and distribution of this pamphlet is provided by the County Clerk. The candidate and measure information within was provided by candidates, cities, districts and other interested parties that chose to participate in this portion of the election process.

Benton County:

At Your Service

Every Day



BOARD OF COMMISSIONERS

205 NW Fifth Street
P.O. Box 3020
Corvallis, OR 97339-3020
(541) 766-6800
FAX (541) 766-6893

Dear Benton County Voter:

Tuesday, November 8, 2016, is **General Election day** in the United States. As a registered voter, you have the opportunity to exercise your right to vote on a variety of federal, state, county, and city contests. Additionally, there are several state and local measures for voters to consider. The contests and measures that appear on your ballot are dependent on the districts in which you reside.

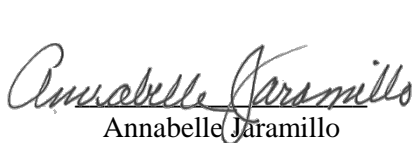
The County Clerk publishes the **Benton County Voters' Pamphlet** as an insert to the Oregon State Voters' Pamphlet to provide local candidates the opportunity to share their messages and views with voters. Candidate Statements are an optional filing, and not all candidates choose to file a statement. Additionally, measure proponents and opponents have the opportunity to submit arguments for or against local measures. This pamphlet includes the complete text for each local measure.

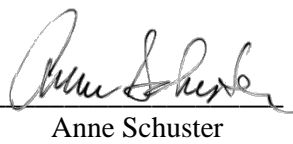
Ballots must be received at any official ballot drop site in Oregon by 8:00 p.m. on Election Day, Tuesday, November 8, 2016. You can mail your ballot or drop it at one of the ballot drop box locations listed in this pamphlet.

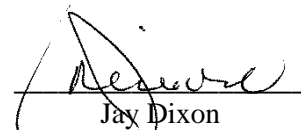
We hope this publication will help you become better informed about candidates and measures in this election. This pamphlet and additional election related information are available on the Elections Division website at www.co.benton.or.us/elections.

If you need additional information or assistance, you may reach the Elections Office by phone: (541) 766-6756; email: elections@co.benton.or.us; or in-person in the basement of the historic Benton County Courthouse, 120 NW 4th Street, Room 13, in Corvallis.

Sincerely,


Annabelle Jaramillo
Commissioner


Anne Schuster
Commissioner


Jay Dixon
Commissioner

Exercise your right and VOTE.

Benton County:
At Your Service
Every Day

TABLE OF CONTENTS

2	Letter from the Commissioners
4	Benton County Official Ballot Dropsites
48	Registering to vote and how to cast your ballot
	Candidates
5	Xanthippe (Xan) Augerot, County Commissioner Position 2
5	Jerry J Jackson Sr, County Commissioner Position 2
6	Annabelle Jaramillo, County Commissioner Position 3
6	Timothy L Dehne, County Commissioner Position 3
7	Paul Cauthorn, County Commissioner Position 3
8	Bill Currier, City of Adair Village Mayor
8	Sharon Konopa, City of Albany Mayor
9	Mike Sykes, City of Albany City Council Ward 1-B
9	Michael (Mike) Thomson, City of Albany City Council Ward 1-B
10	Terrence Virnig, City of Albany City Council, Ward 1-B
11	Roen Hogg, City of Corvallis City Council Ward 2
11	Charles F Maughan, City of Corvallis City Council Ward 2
12	Hyatt Lytle, City of Corvallis City Council Ward 3
12	Barbara Bull, City of Corvallis City Council Ward 4
13	Charlyn Ellis, City of Corvallis City Council Ward 5
13	Nancy Wyse, City of Corvallis City Council Ward 6
14	Bill Glassmire, City of Corvallis City Council Ward 7
15	Carl Price, City of Corvallis City Council Ward 8
15	Mark Page, City of Corvallis City Council Ward 8
	Measures
16	Benton County Measure 2-100 Ranked choice voting
20	City of Albany Measure 22-156 Prohibits marijuana registrants/licenseses
23	City of Albany Measure 22-157 Marijuana city tax
24	City of Corvallis Measure 2-95 Universal healthcare system
26	City of Corvallis Measure 2-96 Marijuana city tax
27	City of Corvallis Measure 2-99 Lawndale site annexation
29	City of Philomath Measure 2-94 Marijuana city tax
30	City of Philomath Measure 2-98 Skirvin Farms annexation
33	City of Philomath Measure 2-102 Chapel Drive annexation
41	Central School District 13J Measure 27-122 Bonds
42	Corvallis School District 509J Measure 2-104 Renewal local option tax levy
45	Monroe School District 1J Measure 2-101 Bonds
46	North Albany RFPD Measure 2-103 Local option tax levy
47	Brownly-Marshall Road District Measure 2-105 Local option tax levy

Information provided in statements or arguments submitted by a candidate, a political party, an assembly of electors or a person supporting or opposing a measure have not been verified for accuracy or truth and do not constitute an endorsement by Benton County.

Benton County Elections & Passports Office

Phone: 541-766-6756 * Fax: 541-766-6757

Website: www.co.benton.or.us/elections * E-mail: elections@co.benton.or.us

BENTON COUNTY OFFICIAL BALLOT DROPSITES

BENTON COUNTY ELECTIONS OFFICE

Basement of County Courthouse
120 NW 4th St Rm 13, Corvallis OR 97330
541-766-6756
Mon thru Fri 8:00 am to 5:00 pm
Election Day 7:00 am to 8:00 pm

24-HOUR OUTSIDE DROP BOXES

BENTON COUNTY COURTHOUSE

Courthouse lawn on Fourth Street
120 NW 4th St, Corvallis OR 97330

BENTON COUNTY COURTHOUSE

Accessible entrance on Fifth Street side
120 NW 4th St, Corvallis OR 97330

BENTON COUNTY COURTHOUSE

Across the street on Fifth Street
180 NW 5th St, Corvallis OR 97330

WELLS FARGO BANK

Timberhill Shopping Center
2543 NW Kings Blvd, Corvallis OR 97330

BENTON COUNTY SUNSET BUILDING

Drop box in parking lot
4077 SW Research Way, Corvallis OR 97333

LINCOLN HEALTH CENTER

Drop box in parking lot
121 SE Viewmont Ave, Corvallis OR 97333

NORTH ALBANY SHOPPING CENTER

Drop box in front of former Ray's location
621 Hickory Ave NW, Albany OR 97321

MONROE COMMUNITY LIBRARY

Drop box in parking lot
380 N 5th St, Monroe OR 97456

PHILOMATH PUBLIC LIBRARY

Drop box near main entrance
1050 Applegate St, Philomath OR 97370

INSIDE BALLOT DROP BOXES

CORVALLIS PUBLIC LIBRARY

645 NW Monroe Ave, Corvallis OR 97330
541-766-6793
Mon thru Thu 10:00 am to 8:00 pm
Fri thru Sat 10:00 am to 6:00 pm
Sun 1:00 pm to 5:00 pm

OSU VALLEY LIBRARY

121 The Valley Library, Corvallis OR 97331
541-737-3331
Mon thru Thu 7:00 am to 12:00 midnight
Fri 7:00 am to 10:00 pm
Sat 10:00 am to 10:00 pm
Sun 10:00 am to 12:00 midnight

SENIOR CITIZENS CENTER OF CORVALLIS

2601 NW Tyler Ave, Corvallis OR 97330
541-766-6959
Mon thru Fri 8:00 am to 4:00 pm
Election Day 8:00 am to 8:00 pm

LBCC BENTON CENTER

757 NW Polk Ave, Corvallis OR 97330
541-757-8944
Mon thru Thu 8:00 am to 8:00 pm
Fri 8:00 am to 4:00 pm

CITY LIMITS MARKET

5800 NW Hwy 99W, Corvallis OR 97330
541-745-7194
Mon thru Thu 6:30 am to 8:00 pm
Fri 6:30 am to 8:30 pm
Sat 8:00 am to 8:30 pm
Sun 8:00 am to 7:30 pm

JOHN BOY'S ALSEA MERCANTILE STORE

186 E Main St, Alsea OR 97324
541-487-4462
Mon thru Sat 6:00 am to 8:00 pm
Sun 7:00 am to 8:00 pm

COUNTY COMMISSIONER



**XANTHIPPE
(XAN)
AUGEROT**
Position 2

Occupation: Consultant/Proprietor, Pangaea Environmental
Occupational Background: Director, Marys River Watershed Council; Vice-President, Wild Salmon Center; Assistant to the Director, Washington Sea Grant.

Educational Background: Oregon State University, Ph.D. Geography; University of Washington, M.A. Marine Affairs; University of Washington, B.A. Economics

Prior Governmental Experience: Grants Committee, Benton Community Foundation; Curriculum Committee, Leadership Corvallis; Treasurer, Ten Rivers Food Web; Oregon Sea Grant Advisory Council; Friends of Corvallis-Benton County Library; 4-H Wildlife Steward; Knauss Congressional Fellow.

Core Values

Government is the vehicle for "we the people" to provide public resources such as roads, education, law enforcement, the courts, health care and environmental quality. Xan will emphasize listening, collaborating and using research to provide effective and efficient county services. Her core values include equity and long-term, systemic solutions.

Focus on the Future

For Benton County to prosper, we must maintain the quality of life and community we value, expect and deserve. This means supporting agriculture and forestry, while also fostering innovative technical and creative businesses. The population of Benton County will grow over the next decade, resulting in stress on our infrastructure, open space and natural resources, including water. Xan brings skills and expertise for forging effective partnerships between the private sector and government to face these emerging challenges.

Xan's directorship of Marys River Watershed Council gave her a depth and breadth of knowledge of issues affecting people across Benton County. Xan will act with energy and integrity to represent all of Benton County.

Endorsements:

Vincent Adams, CSD Board Member;
Zachariah Baker, Corvallis City Councilor;
Senator Sara Gelsler; Sheriff Scott Jackson;
Sharon Konopa, Mayor of Albany;
State Representative Dan Rayfield; Biff Traber, Mayor, Corvallis;
Anne Schuster, Benton County Commissioner;
Linn-Benton-Lincoln Central Labor Chapter; OLCV;
Peter Henry Bober; Mike Corwin; Dee Curwen; Patricia Daniels;
Kent Daniels; Tom Denison; Stephanie W. Hampton;
Richard Hervey; Elizabeth Kerle; Mark Kosmerl; Jim Moorefield;
Robert Malouf; Jay Thatcher; Curtis Wright

For more information and additional endorsers,
visit www.electxan.com

(This information furnished by Xan Augerot For Commissioner)



**JERRY J
JACKSON, SR**
Position 2

Occupation: Business Owner: Code Enforcement Officer, Polk County

Occupational Background: Polk County Community Development Manager; Community Service/Work Release Coordinator; Business Owner; US Army

Educational Background: Ford Family Foundation Leadership Course; Oregon State University, Political Science; Linn County Community College; Trend College, Certificate in Travel and Tourism Management; ASFPM Certified Floodplain Manager

Prior Governmental Experience: City of Philomath, Budget Chair; Former Philomath City Council President; Budget/Finance/Administration Board and Ordinance Committees/Budget/Police Committee; Past Polk County Community Development Manager; Community Service/Work Release Coordinator; School Board Member, St. Mary's School

Volunteer Activities:

Benton County Republican Chair; Knights of Columbus; Coach, Cub Scout Leader

REAL GOVERNMENT EXPERIENCE

It is vital to have a Commissioner who understands government and has the experience to make sound decisions. Working with Oregon Land Use Laws as a Code Enforcement Officer gives me the tools and understanding to make these decisions.

REPRESENTATION FOR ALL CITIZENS

Sustainability

The Willamette Valley is blessed with many natural resources. It is time to let the natural resources of Benton County return prosperity to the community in a responsible and sustainable manner.

Environment

Benton County is known for being at the forefront in protecting our environment. I will continue Benton County's great tradition for now and for the future generations.

Economics

Benton County has every element to thrive economically. Government, through reasonable taxes, regulation, and a can do attitude can ensure a climate of success and vibrancy. I will do that!

www.electjerryjackson.com

(This information furnished by Elect Jackson Commissioner PAC)

COUNTY COMMISSIONER

ANNABELLE
JARAMILLO

Position 3

Occupation: Benton County Commissioner**Occupational Background:** Research botanist; civil rights advocate; teacher**Educational Background:** B.S., M.S. – Biology, Portland State University**Prior Governmental Experience:** Association of Oregon Counties Board, Legislative Committee, Public Lands and Energy/ Environment Subcommittees; Council of Forest Trust Land Counties; Governor's Law Enforcement Contact Committee; Equality Task Force; Judicial Fitness and Disabilities Commission; Cascade West Area Commission on Transportation**Community Service:** Community Services Consortium; American Leadership Forum; American Civil Liberties Union; Economic Vitality Partnership**Family:** Richard Medley, spouse; three children, eleven grandchildren**Re-Elect Commissioner Annabelle Jaramillo**

Under Annabelle's leadership, Benton County has won state and national recognition for **good governance**. We can count on her to govern **effectively and efficiently**.

Annabelle **protects our environment**. We live in a beautiful place, and she has worked to keep it that way with a habitat conservation program that **preserves and enhances our natural areas and parks**. Annabelle will continue to implement responsible land use planning that balances growth with respect for our county's natural beauty.

She will continue to make county government more **efficient**. She worked with her colleagues to **streamline operations**, including moving offices from rented to county-owned facilities, generating **significant cost savings** for taxpayers.

Annabelle is a strong supporter of **public health and safety**, and an **advocate for at-risk youth**, championing our county's robust juvenile department that helps kids stay out of trouble.

"I want to continue this work! I am committed to a Benton County where we and future generations can experience rich, rewarding lives. I'm grateful for your past support; I ask that you support me once again."

Supporters

U.S. Senators Ron Wyden & Jeff Merkley;
U.S. Representative Peter DeFazio; State Senator Sara Gelsler;
State Representative Dan Rayfield;
District Attorney John Haroldson; Sheriff Scott Jackson;
Commissioners Jay Dixon & Anne Schuster;
Mayors: Sharon Konopa – Albany, Biff Traber – Corvallis;
Frank Thayer – Monroe, Rocky Sloan – Philomath
And many more . . .!

Re-Elect Commissioner Annabelle Jaramillo

(This information furnished by Jaramillo for Commissioner Committee)

TIMOTHY L
DEHNE

Position 3

Occupation: Lifestyle Consultant**Occupational Background:** Landscaper, HomeYardServices. Medical Receptionist, Certified Nursing Assistant, Operating Room Orderly, X-Ray Tech Aide, Admitting Office Representative, U.S. Army medical specialist.**Educational Background:** Linn-Benton Community College. 2003, AA in Water/Wastewater. Oregon State University, Junior, Health Care Administration; Spartan School of Aeronautics, Air Frame & Powerplant**Prior Governmental Experience:** Associate Director, 2009-Present, Benton Soil & Water Conservation District Director, 2005-2008, Benton SWCD

Water is THE issue. Water is the issue that concerns everyone of us. However, each of us has our own issues we want to deal with. I want to be the County Commissioner that finds solutions to Benton County citizens concerns. After all, the commissioners work for the citizens. I would like the opportunity to work for you, the citizens of Benton County. Please take the time to let me know what issue you would like addressed. I will listen for a thorough understanding of your concern. We, together, can make a difference.

Thank you,

Timothy L. Dehne
(541) 829-9848
timldehne@gmail.com

(This information furnished by Timothy L Dehne)

COUNTY COMMISSIONER



**PAUL
CAUTHORN**

Position 3

Occupation: Owner, Oregon Nutrients, LLC – Producing high quality worm castings for home gardeners. Currently restoring a historic home in downtown Corvallis at the corner of 6th Street & Western. This property previously had been Power Tool Supply and the Woolly Llama.

Occupational Background: Real estate investment/restoration/management. Owned and operated multiple small businesses, including an organic produce farm using dry-farming methods (a method of water conservation farming now being researched and demonstrated at OSU).

Educational Background: Studied computer science and art at Lane Community College. Independently studied farming and gardening, real estate investment, and all phases of residential construction.

Prior Governmental Experience: Twenty years' experience advocating for governmental transparency and fiscal responsibility.

Committed to:

Fund Essential Services before Pet Projects

Honor the Will of the Voters

Keep our Communities Safe

Improve and Protect our Quality of Life

Protect Property Rights and Farmland

Encourage Diverse Job Opportunities

Support Non-degree Educational Opportunities

Build our Economy

If you want to know more about where I stand on any issue or just have a chat, please contact me: electcauthorn@gmail.com or 541-513-8151. You can also find me on Facebook. I appreciate your support and look forward to serving the community.

(This information furnished by Paul Cauthorn)

CITY OF ADAIR VILLAGE



**BILL
CURRIER**

Mayor

Occupation: Business Owner; Computer Networking Consultant

Occupational Background: Police Officer

Educational Background: Southern Oregon University, Computer Information Systems; Pacific Union College, Business

Prior Governmental Experience: Adair Village Mayor; Adair Village Public Safety Commission; Willamette Criminal Justice Council; Corvallis Area Metropolitan Planning Organization; Cascades West Area Commission on Transportation; League of Oregon Cities Board of Directors

RE-ELECT BILL CURRIER FOR CONTINUED PROGRESS

Adair Village continues to grow as a healthy and vibrant rural community. Our all-volunteer city council has been committed to keeping costs down and service levels high, despite a challenging economy. Our hard-working city staff has done an amazing job improving efficiencies and maintaining city services on a limited budget.

In the next two years we will be making critical updates to our water system, ensuring that it has the reliability and capacity to serve our community for many years to come. Our planning and preparation in recent years has also led to the opportunity for additional affordable housing options, starting as early as next year.

We are also anticipating adding a number of local small businesses, to create a more self-sufficient community. Part of that development includes a new town square, which will become the anchor for additional interactive community amenities, such as the new historical interpretive center and the new community hall.

It has been an honor to serve as your mayor these last two years. With your input and support we have been able to make wise decisions about the future of our community. With your vote I will continue to work side-by-side with the other council members and city staff to keep Adair Village a great place to live and raise a family.

Current Top Priorities

- Community-oriented growth
- Affordable housing opportunities
- Local small business development
- Enhanced community amenities

www.BillCurrier.com

STRONG & EFFECTIVE LEADERSHIP

(This information furnished by Bill Currier)

CITY OF ALBANY



**SHARON
KONOPA**

Mayor

Occupation: Mayor of Albany

Occupational Background: Event coordinator; small business owner

Educational Background: South Albany High School diploma

Prior Governmental Experience: Mayor of Albany, January 2009-present; Albany City Councilor, January 1997-Dec. 2008; State of Oregon Passenger Rail Leadership Council, 2011-present; State of Oregon Public Transportation Plan Policy Advisory Committee, May 2016-present; Willamette Criminal Justice Council, board member-present; Central Albany Revitalization Area Board and Agency, 2001-present and former Chair of Agency; Cascade West Council of Governments; serving Senior/Disability Services, Meals on Wheels, Loan Program Advisory Committee—18 year board member and current chair; Cascades West Economic Development District, serving Linn, Benton, Lincoln and Lane Counties; 2015-present, chair; Community Development Commission, 2013-present; Numerous committees/task forces-check out her web site for more information.

Government- Partnered Organizations:

- ◆ Albany Millersburg Economic Development Corporation; board member
- ◆ Albany Downtown Association; liaison board member
- ◆ Albany Partnership for Housing and Community Development; board member 18 years and President of the board.

Sharon Konopa has diligently worked hard to support Albany's economy and during the nation's worst economic downturn.

She kept Albany moving forward as a vibrant community with new jobs, businesses and great places to visit like Talking Water Gardens, historic downtown and Albany's fun year round events.

Currently Sharon Konopa is Mayor of Albany and is a full time community volunteer. She has devoted for many years her time and energies for the citizens of Albany.

Have you ever noticed that most political candidates run their campaign on promises, and seem to say about the same thing? Sharon Konopa is not your usual candidate. She runs her campaign on what she has accomplished, and she has a 20 year record to prove it.

"Thank you Albany voters, for your years of support in helping me make Albany a great place to live".....Sharon Konopa

Learn more about her experience and accomplishments at:

www.sharonkonopa.org

(This information furnished by Albany Friends of Sharon Konopa)

CITY OF ALBANY CITY COUNCIL



MIKE SYKES

Ward 1-B

Occupation: Small Business Owner
Occupational Background: US Marine Corps
Educational Background: West Albany High School
Prior Governmental Experience: Albany Chamber of Commerce Board Member; Safe Haven Board Member; YMCA Board Member; Albany Boys and Girls Club Board Member; City of Albany Volunteer Fire Fighter; Greater Albany Public Schools DFAC Committee

MIKE SYKES: COMMITTED AND CONNECTED

"Being a business owner in the Albany area since 1985 with nearly 30 employees, Mike understands the importance of a strong small business community and what it takes to be successful."

Janet Steele, President, Albany Area Chamber of Commerce

"With unlimited amounts of hands on experience, Mike is committed to ensuring the community continues to prosper and move forward in the right direction."

Floyd Collins, Albany City Councilor 2006-2016

"Not only does Mike operate with the highest level of integrity, but he works hard to build sustaining relationships."

Andy Olson, State Representative - HD 15

MIKE SYKES: ON A PERSONAL NOTE

To the great people of Albany,

Having lived in the Albany area the past 50 years, I've learned the community is only as good as we make it. Not only do I have the time and energy to promote the City of Albany, I have the knowledge to create the common sense policy that best reflects ALL of Albany. As your City Councilor, I will support local businesses and the jobs they provide while using my business management experience to adopt and balance the budget. In 2011, I was honored to receive the Small Business Award, and if elected, I will bring the same passion, integrity and hard work to this great city. As we move forward in this election year, your vote is the most important to me.

Sincerely,

Mike Sykes

(This information furnished by Mike Sykes)



MICHAEL (MIKE) THOMSON Ward 1-B

Occupation: Care Provider
Occupational Background: Administrative
Educational Background: BA The Evergreen State College
Prior Governmental Experience: City of Albany Budget Committee: Jan 2011-present; City of Albany Human Relations Commission: June 2009-Dec. 2013

Organizations: St. Vincent de Paul Conference member, 2009-present; Numerous volunteer hours for church and community activities.

"I have always strongly believed any person running for an elected position should have some experience with the jurisdiction they seek to hold office.

Michael Thomson has the most experience for the position of Ward 1. He has been on the Budget Committee for over five years, which is the one city board and commission that gives you the whole scope of city services, along with the current and future gaps and needs. Besides Michael's experience with the City of Albany, his spouse Jolene is also involved with our historic preservation program. They are a family that supports many events, programs and volunteering their time in the community.

I hope you will join me in supporting Michael Thomson to be your representative on the Albany City Council for Ward 1."

.....Sharon Konopa, Mayor of Albany

Michael Thomson supported responsible budgets that protected public safety services, while reducing city employment overall during the downturn of the economy. Tough choices had to be made, but it placed the city in strong financial shape today.

Thomson supports: the success of urban renewal, especially for Ward 1

Thomson understands: North Albany needs a full-service retail grocery store to improve livability and complete the neighborhood

"The experience of serving people in need throughout Albany helped me understand the struggles many face in our city. I will treat all residents with respect.

Jolene, our daughter Erin and I love Albany. It is a great place to live, work and raise a family. I want to keep it that way for my family and yours". ...Michael Thomson

thomsonforalbany.wordpress.com

(This information furnished by Thomson for Albany)

CITY OF ALBANY CITY COUNCIL



TERRENCE
VIRNIG

Ward 1-B

Occupation: Plant Engineer/Maintenance Planner for Georgia Pacific Chemicals

Occupational Background: Engineer, Plant Engineer

Educational Background: BA - Bioscience, St. Mary's College, Winona, MN ; MS - Environmental Science , Michigan Technological University, Houghton, MI; BS – Mechanical Engineering, OSU Corvallis, OR

Prior Governmental Experience: Albany Public Safety Commission , Albany Bicycle and Pedestrian Commission.

Family: Wife Janice, Manager Cashiers Dept. OSU. Kids, Justin 30 and Jessica 27.

Who am I

I'm a long time resident of Oregon – 36 years. I've lived in the Albany area for 16 of those years. I'm currently employed as the Plant Engineer/Maintenance Planner for Georgia Pacific Chemicals in Millersburg. I have been there for eleven years. Prior to that time I was an engineer at the Synthetech Chemical Plant (now the Grace Plant) for 5 years.

I'm a Registered Professional Engineer in Oregon and a Certified Hazardous Materials Manager with the Institute of Hazardous Materials Management.

Why Me?

If you are reading this background sheet, like me you live in a community that is not too big (we can buzz out in the country in minutes) and not so small that we need to go elsewhere for shopping, health services and entertainment (our downtown is gaining an area reputation as a place to go for restaurants). I like being here. Like you I want to preserve this community and this lifestyle. However, we do have issues. Growth is inevitable. It is coming. We will have to deal with it. How will it affect our children? Will they be able to afford housing as we know it? Can we continue to have top quality police, fire and schools? How do we pay for those vital services? I want to do my part solving these problems.

I can tell you we need a grocery store in Ward 1. Please vote Terry Virnig for Councilman.

(This information furnished by the Committee to Elect Terry Virnig to the Albany City Council)

CITY OF CORVALLIS CITY COUNCIL



ROEN
HOGG

Ward 2

Occupation: Retired.
Occupational Background: Project Manager, Oregon Employment Department. Software Release Manager, Hewlett Packard. System Analyst, Oregon State University.
Educational Background: M.S., Montana State University. B.A., Bates College.
Prior Governmental Experience: Corvallis City Council; Urban Services Committee; Budget Commission; OSU-City Collaboration Steering Committee; Climate Action Task Force; Community Relations Advisory Group; Legislative Committee Liaison to:

- Planning Commission
- Historic Resource Commission
- Downtown Commission
- Downtown Parking Committee
- Madison Avenue Task Force
- Majestic Theater
- da Vinci Days Festival
- Associated Students of Oregon State University (ASOSU)

Focus on:

- **Neighborhood livability.** Homeowners, renters and students deserve a vibrant, attractive place to live, work and do business. Tackle noise, parking and traffic issues. Support community gardening, city parks and historic neighborhoods.
- **Community values.** Support community organizations, nonprofits, arts, culture, schools, diversity, sustainability and OSU-City collaboration.
- **Economic vitality.** Small business is vital for creating new jobs. Facilitate new businesses, grow existing businesses and recruit new companies.

Longtime Corvallis resident. Member First Alternative Co-op. Founding member Whiteside Theatre Foundation. Strongly support our local neighborhood associations which are vital for improving the livability of our historic neighborhoods.

I am running for re-election to protect and enhance our neighborhoods and our city. I will appreciate the opportunity to continue to represent you on the Corvallis City Council.

(This information furnished by Roen Hogg)



CHARLES F
MAUGHAN

Ward 2

Occupation: Community Manager of an Affordable Housing project for Seniors and Disabled persons
Occupational Background: Community Manager, Cascade Management; Site Manager, Viridian Management; District Manager, Gazette-Times/Democrat-Herald; Retail Store Supervisor, Goodwill Industries; Accounts Receivable Clerk, National Paving
Educational Background: None
Prior Governmental Experience: Precinct Committee Person for Benton County Democrats; Corvallis for Bernie Organizer

Progressive Vision, Local Values

Creating inclusive communities

Diversity produces culturally vibrant communities. We will work to have more inclusive neighborhoods with affordable housing for all Corvallis residents at all stages of life. Together, we will work to address Corvallis' growing homeless crisis.

Engaging citizens to affect change

This election cycle has shown us the importance of our ongoing involvement in the political process. It is my goal to work with members of my community in Ward 2 and all of Corvallis to engage voters, bring awareness to issues affecting our communities, and foster involvement. Real change happens from the bottom up and it's time to get to work.

Promoting sustainability for future generations

Climate change and dependence on fossil fuels are a couple of the biggest challenges facing all Americans. We must take action locally to move to renewable energy sources, and improve public transportation.

Since moving my family to Corvallis I have always looked for ways to be involved in the community. Corvallis is a wonderful place to live, but I believe we can do even better. I will reach out to people in my community through monthly meetings that will take place in various neighborhoods. I am receptive to community members' ideas and concerns, and will make every effort to address these as a City Councillor.

Endorsed By

Xan Augerot - Candidate Benton County Commissioner Pos. 2; Rachel Ozretich; George Grosch – Corvallis City Council 2000-2009; Richard Hervey – Past Corvallis City Council President; Stephanie Hampton – Founder, Corvallis for Bernie, Precinct Committee Woman (6); Justin Brice – Bernie Delegate CD4; Catherine Stearns – Corvallis for Bernie, Precinct Committee Person

(This information furnished by Charles F. Maughan)

CITY OF CORVALLIS CITY COUNCIL



HYATT
LYTLE

Ward 3

Occupation: Criminal Justice & Mental Health Practitioner
Occupational Background: Store Manager, Starbucks; Clinical Counseling Resident, Walden; Graduate Researcher, WOU; Researcher, Teaching Research Institute; Crime Victim Advocate, Polk County DA's Office; Office-Manager, Lytle Painting; General Manager, Pizza Pipeline.
Educational Background: Walden University, M.S. Mental Health Counseling *(3/4 finished); Western Oregon, M.A. Criminal Justice, B.S. Criminal Justice; Linn-Benton A.A.O.T, A.A.S. Criminal Justice; Corvallis High
Prior Governmental Experience: Polk County District Attorney's Office

As Corvallis moves into the 2017-18 Council Session our city will face challenges unique to our times. I believe that strengthening the connective tissue between city-government and the community is integral as we prepare for future change. Citizens have a reasonable expectation of safety and wellbeing in our communities, in addition to the awareness of any potential issues which could affect that expectation. As your Councilor, my duty is to guide that awareness. I will commit my focus towards:

Health & Public Safety- Access to services/resources promoting physical-mental-emotional wellbeing; Stronger emphasis towards community policing; fire departments & emergency-preparedness protocols for earthquake/flood planning.

Community Quality- Promotion of community connectivity/engagement, diversity, parks/natural resources, buildable lands & sustainable budget.

Educational Prosperity- Collaboration with 509J School-District, OSU & LBCC in providing educational success & student prosperity.

Housing & Economic Vitality- Addressing issues in housing/employment markets based on annual population increases; being proactive regarding homelessness.

Ecological Focus- Climate concerns/impact; pollution mitigation; alternative-energy & transportation; environmental initiatives and conservationism.

As a resident of South Corvallis, promoting community sustainability and the vibrancy of our unique "South Corvallis" culture is priority to me. I will continue to work alongside community members/partners to encourage/inspire:

- Development (housing-community-commercial);
- Local-business enterprise;
- Mixed-use neighborhoods;
- Civic-beautification/enhancement of public spaces;
- Working relationships with existing businesses;
- An open-door for ward/community to express their concerns;
- Educating ward/community on how to be part of city process;
- Promoted awareness of city news, events, & resources.

"Hyatt Lytle: Strengthening the Heart of the Community"

Endorsed by Stanley Nudelman, MD, Charla Van Koten, Ph.D

www.hyattlytleward3.com hyattlytleward3@gmail.com

(This information furnished by Hyatt Lytle)

The above information has not been verified for accuracy by Benton County.



BARBARA
BULL

Ward 4

Occupation: none
Occupational Background: Customer service, childcare, teaching; various jobs related to state and local government planning at Lane Council of Governments, DLCD, and Benton County.
Educational Background: BA, Reed College (Mathematics); MS, Portland State University (Mathematics); Graduate coursework in Public Administration at University of Oregon
Prior Governmental Experience: Corvallis Committee for Citizen Involvement, Corvallis Budget Commission (Iiason to CIP Commission), Corvallis City Council 2015 – 16.

Other Volunteer Activities: Leadership Corvallis graduate, Corvallis City Club, da Vinci Days Board, urban renewal campaign, AYSO referee, minor involvement in Prosperity That Fits and Corvallis Sustainability Coalition.

Working together toward a common goal

Our local government is our common tool for creating the community we would like to live in. I would like to continue to work with the people of Corvallis to guide our city government in the work of preserving and creating the city we want in a financially responsible way.

How are we doing?

Compared to many communities Corvallis is doing well. However, we continue to hear that the people of Corvallis would like us to be doing better. Unfortunately, we do not even have the revenues to continue our current services as they are currently delivered.

What does our community want?

Our work on the vision has started this conversation. Our taskforce work together with new data for the transportation plan and urbanization study set the table for next steps.

How do we get there from here?

Over the next two years we as a community will decide whether to be content doing less with current revenues or to find additional revenues. We will decide how to manage the growth we expect over the next 20 years, and how to pay for the services we want. I believe Corvallis is up to the task of addressing these issues and creating an action plan to guide us all in doing that work together.

(This information furnished by Barbara Bull)

The above information has not been verified for accuracy by Benton County.

CITY OF CORVALLIS CITY COUNCIL



**CHARLYN
ELLIS**

Ward 5

Occupation: High School English teacher
Occupational Background: Twenty years with 509j
Educational Background: BA in English and history, University of New Hampshire; MA in American history, University of New Hampshire; MAT, Lewis and Clark College.
Prior Governmental Experience: Community Relations Advisory Group, Neighborhood Livability Workgroup for the Corvallis/OSU Collaboration

Other Experience: Citizens for Livable Corvallis, Building Rep, Corvallis Education Association, League of Women Voters, PreservationWorks, Corvallis resident since 1996

Charlyn Ellis for City Council Ward 5

As your city councilor, I will work for change based upon the following principles:

Everyone deserves a **safe place to sleep**. No one's economic status or location in town should alter this fact. This includes long-term residents just looking for a good night's rest, renters who need housing that's not dangerous to live in, and the homeless who would be glad to have anything at all.

We need to remember that Corvallis is a **city with a university**, not the other way around. Our choices must benefit and support **all** the residents of Corvallis.

We need to be proactive, not reactive, in our land use decisions. This means having the difficult conversations about what we want our community to look like, and how to adjust our ordinances and land use code to support this vision.

As Ward 5 councilor, I will strive to represent the diverse voices and opinions reflected in our neighborhoods. I will listen to concerns, help residents locate resources within the city, foster open communication, and advocate for our ward.

(This information furnished by Charlyn Ellis for Ward 5)



**NANCY
WYSE**

Ward 6

Occupation: Independent Sales Consultant and Stay-at-Home Parent.

Occupational Background: Co-resident Manager for large apartment complex and townhouses; 5 years. Sales Management, Outside Sales, Sales/Customer Service; Verizon Wireless cellular phone sales and service; 5 years.

Other Past Employment: 7-11, Pizza Pipeline, OSPIRG, Windermere Real Estate, Live Bridge, Gap, Bellagio's Pizza.

Educational Background: Oregon State University, General Science.

Prior Governmental Experience: None

As a female in my 30's I am a demographic not currently represented on the 2015-16 city council; I seek to fill this void on the 2017-18 council.

My motivation for running for this position stems from being a parent raising two small children in Corvallis. I desire the best version of Corvallis- now and for future generations; especially when it comes to safety, educational and employment opportunities, and environmental responsibility.

- **Safety:** Well-supported fire and police services; emergency preparedness plans in place city-wide.
- **Educational and Employment Opportunities:** Well-maintained schools. A strong economy that fosters an entrepreneurial spirit.
- **Environmental Responsibility:** Minimize waste, conserve resources, lower air pollution in the city.

In addition to the above issues, I hope to be involved with finding manageable ways to mitigate issues surrounding homelessness. Homelessness is a daunting subject with no easy answer; however, I view a challenge as an invitation to find a creative way to succeed.

I am committed to fostering and maintaining effective communication with my ward. I intend to bridge the gap between city government and the average citizen. I believe in honesty and transparency. I will make sure your concerns are heard and your questions are answered. The city council member for your ward represents YOUR voice- make sure it speaks for YOU by electing me for the 2017-18 term.

**Endorsed by Stewart Wershow
Endorsed by Pieter deVos**

www.nancywyseforcitycouncil.com
nancywyseforcitycouncil@gmail.com
<http://www.facebook.com/NancyWyseWard6>

(This information furnished by Nancy Wyse)

CITY OF CORVALLIS CITY COUNCIL



**BILL
GLASSMIRE**

Ward 7

Occupation: Retired

Occupational Background: Teacher, computer programmer, Price Creek Bakery

Educational Background: BS, MIT; PhD, Stanford

Prior Governmental Experience: Corvallis City Council, 2015-16

Please vote for me for the Corvallis City Council. 2015-16 was my first term as Ward 7 Councilor. I have worked to be thoughtful and responsive, and I will continue that in 2017-18.

The 2015-16 Council took on a substantial workload: hiring a new City Manager, creating the Imagine Corvallis 2040 vision and associated community action plan, creating a climate action plan, planning for a sustainable budget, and continuing to address City-University relations, economic vitality, and the shortfall in affordable housing. With the support of City Manager Mark Shepard and city staff, the City has made progress in those areas, while honoring the City's overarching goals of citizen involvement, cost efficiency, diversity, and sustainability.

As Councilor, my goals for 2017-18 will be a continuation of the 2015-16 work:

- Involve concerned community members directly in decision-making discussions
- Maintain a balanced budget while controlling costs for lower-income citizens
- Encourage both sustainability and economic vitality
- Support a community-based process to address homelessness and affordable housing

Led by Mayor Biff Traber, Council President Penny York, and Council VP Hal Brauner, the Councilors worked well together on the 2015-16 Council. I will actively support continued cooperation in 2017-18.

A critical feature of local government is its closeness to its constituents. Taking advantage of that, I will engage in discussion with constituents and fellow councilors, with a lot of listening on my part. I invite you to help by playing Councilor: if you were a Councilor, how would you decide your position on questions of policy and procedure? Let me know your ideas and thoughts. With your help, I will advocate for the best course of action we can find, and I will vote accordingly.

I welcome your questions, your ideas, and your conversation. Let's work together toward an even better Corvallis. Thank you.

(This information furnished by Bill Glassmire)

CITY OF CORVALLIS CITY COUNCIL



CARL PRICE

Ward 8

Occupation: Computer Engineer, ON Semiconductor
Occupational Background: United States Marine Corps (Honorable Discharge, Disabled Veteran); Computer Engineer with various companies including: Hewlett-Packard, Agilent Technologies, Aptina, LLC, ON Semiconductor
Educational Background: Oregon State University for both undergraduate and graduate studies in Computer Engineering
Prior Governmental Experience: Corvallis Planning Commission (currently serving); Corvallis Housing and Community Development Advisory Board (currently serving)

As a new Council term rolls around the City of Corvallis is faced with a number of challenges and issues that I believe I can represent the people of Ward 8 and the rest of the City to address. As your Councilor I would first and foremost listen to the people of Corvallis and represent you.

One of the pressing issues to come in the next two years is to help bring the City of Corvallis to a place of fiscal stability. We in Oregon are at a place where many governmental agencies are asking for more and more money from families who have seen their own financial situations stay static or grow very slowly. The City and other agencies can not keep dipping into a smaller and smaller pool of citizen monies and expect the people of Corvallis to continue to fund them. As a City, we must figure out how to provide critical services to the community without taxing our citizens into financial ruin.

There are many other issues from homelessness to parking to outdated plans and code that that will require your Councilor to listen to the community and help develop plans to address those issues. I plan to be that Councilor for you.

Thank you for your vote for me as your Ward 8 City Councilor.

(This information furnished by Carl Price)



MARK PAGE

Ward 8

Occupation: Owner, telecommunication services business
Occupational Background: US Army (Honorable discharge, disabled veteran). 14 years Automotive Management experience.
Educational Background: BS, Business Administration/Finance, Kansas State University
Prior Governmental Experience: None

Our family moved to Corvallis to escape big city life. I wanted my daughters to grow up in a safe, welcoming environment. We quickly felt the sense of community that makes Corvallis special. I'm proud to call Corvallis home.

I believe my management and finance education and experience will be of benefit on the Council. It brings another perspective to dealing with our challenges. That's not the only measure of diversity I offer. There are people of many different colors here who feel they don't have a voice. I know they can, if they step up, get involved. That's what I'm doing.

Imagine Corvallis 2040 envisions much for us. I want to help make it a reality, with effective implementation strategies, and metrics to keep us on track.

It's critically important for us to slow the effects of global warming, and protect our planet for future generations. The Corvallis Climate Action Plan moves us in the right direction.

Just as it's important to be environmentally sustainable, we also need to make city services fiscally stable. I support the Sustainable Budget Task Force recommending viable alternatives for a vote of the citizens.

Corvallis desperately needs affordable housing. If we encourage building homes within the reach of middle and lower income families, the result will be a more vibrant and inclusive community. The Housing Development Task Force's recommendations help. It makes sense to incentivize developers to build housing we need for families, not just multi-tenant buildings for transient students.

What I believe most about representing the residents of Ward 8, and serving the citizens of Corvallis is this: Just because it hasn't been done, doesn't mean it can't be done. Working harder to work together, we can get it done.

(This information furnished by Mark Page)

BENTON COUNTY MEASURE 2-100

BALLOT TITLE

CAPTION: Amends County Charter to elect officials using ranked choice voting

QUESTION: Should County Charter be amended to elect countywide officials by ranking candidates in order of preference using ranked choice voting?

SUMMARY: The measure would amend the Benton County Charter to specify that all elected officers of the County be elected by a process known as ranked choice voting, also known as instant runoff voting or the alternative vote. Currently, the Benton County Commissioners and Benton County Sheriff are the only elected County officers.

Ranked choice voting would allow voters to rank candidates in order of preference and uses those rankings to elect candidates. The measure provides that ranked choice voting would be used for general and special elections; not for primaries.

The measure would require the County to enact an ordinance implementing the ranked choice voting process no later than 120 days prior to the date of the first election using ranked choice voting.

Ranked choice voting would be implemented only after the County has received up to \$200,000 from the State of Oregon, or other sources, for the costs of implementation. Ranked choice voting would be used during the first election at least twelve months after funding has been received.

EXPLANATORY STATEMENT**Summary**

This measure would implement Ranked Choice Voting for elected positions in Benton County government. Ranked choice voting is an elections system that would give voters the ability to rank candidates in order of preference; 1, 2, 3, and so on. If no candidate receives a majority (more than fifty percent) of first choice votes, voters whose preferred candidate receives the fewest votes will have their votes automatically recast for their second choice candidate. This process will repeat until one candidate receives a majority of votes cast.

Current Election Law

Currently in Benton County, the candidate who receives the most votes wins the election. Under the current system, there is no requirement that a candidate receive a majority of votes cast to be elected. This means candidates could be elected to office with less than fifty percent of the votes cast in that contest. This may occur when more than two candidates run for the same office and split the votes among them; potentially resulting in a successful candidate receiving less than a majority of the votes cast.

How Ranked Choice Voting Works

Ranked Choice Voting is a system that gives voters the ability to rank candidates in order of preference. If no first choice candidate receives more than fifty percent of the votes, the candidate who receives the fewest first choice votes is eliminated from the race. If a voter's first choice candidate is eliminated, the voter's ballot is then instantly recast for the voter's second choice in the ranked choice contest. This process repeats until one candidate receives more than fifty percent of the votes cast. A candidate must have a majority, greater than fifty percent, of the votes cast to be elected to county office under this system.

If passed and funded, this Benton County Charter amendment measure would require Ranked Choice Voting to be used only to elect countywide officials during General and Special Elections. Ranked Choice Voting would not be used during party primaries. Currently, the only countywide elected offices are the County Commissioners and the County Sheriff.

Implementation

This measure does not require the county to spend county funds for the initial implementation of Ranked Choice Voting. If the measure is enacted, the county will request up to \$200,000 from the state or other sources within 60 days of the election date, to educate voters and implement the system. With state-approved modifications, the county's current vote tabulation equipment can be adapted to handle Ranked Choice Voting contests. This system would be implemented at the first general election that is held twelve months or more past the date when funding is secured.

TEXT OF MEASURE**The People of Benton County adopt the following Amendment to the Benton County Charter:**

A new Section shall be added to Chapter VII Elections, to read as follows:

Section 25. Method of Election.

- (1) Elected officers of the County shall be elected in the general election, and at any special election, by a process of ranked choice voting, also known as instant runoff voting or the alternative vote.
 - (a) The County Commissioners shall, by ordinance, establish rules necessary for the orderly administration of the election as soon as practicable but not later than one hundred twenty days prior to the first election using ranked choice voting.
 - (b) Within sixty days of the passage of the initiative establishing this Section 25 of the Charter, the County shall request not more than \$200,000 in funding from the State and, if necessary, other sources, to pay for the initial implementation of ranked choice voting, which shall include an initial education campaign for County voters. The County Clerk shall implement ranked choice voting at the first general election held twelve months or more past the date funding is secured, and at each general and special election of elected officers thereafter.

(Submitted by Benton County)

**NO ARGUMENTS AGAINST THIS
MEASURE WERE FILED**

BENTON COUNTY MEASURE 2-100

ARGUMENT FOR:

YES ON RANKED CHOICE VOTING – WHY IT MATTERS

Coming from different political parties we don't always agree on every issue. However, there are some things we easily agree on. First, people continue to be more and more discouraged with politics and sometimes even choose not to vote. Second, we dislike it when candidates are elected to office with less than 50% of the vote when people opposing one candidate split their votes among two or more other candidates. Third, and most importantly, we agree that Ranked Choice Voting helps solve these problems. Here's why:

MORE CHOICE

Ranked Choice Voting gives voters more choices. Instead of voting for just one candidate, voters have the ability to rank candidates in order of preference 1, 2, 3, etc. You can vote for whom you want, instead of who is more likely to win. You never have to choose between throwing your vote away or voting for the lesser of two evils.

ENSURES MAJORITY REPRESENTATION

Right now, politicians can be elected to office with less than 50% of the vote. Ranked Choice Voting fixes this by ensuring candidates will always be elected by a majority of the people they represent. This upholds our tradition of electing candidates through the will of the people, making them more accountable to the voters.

ENCOURAGES NEW VOICES AND VOTER ENGAGEMENT

Where Ranked Choice Voting is used in other U.S. cities and counties, there is a greater diversity of voices and more candidates to choose from. As a result, voters are more engaged and more people vote because they feel their voice matters more.

RETURNS CIVILITY TO POLITICS

Because Ranked Choice Voting gives voters the ability to rank candidates in order of preference, politicians have to run more positive campaigns and seek broader support from the public in order to get elected.

**Democratic State Representative Dan Rayfield
Pacific Green Party Co-Founder Blair Bobier**
Ranked Choice Voting Chief Petitioners

(This information furnished by Dan Rayfield)

ARGUMENT FOR:

**LEAGUE OF WOMEN VOTERS OF CORVALLIS
&
ORGANIZATIONS YOU TRUST****RECOMMEND "YES" ON RANKED CHOICE VOTING**

This is a very divisive presidential election. Although many Democrats will support Hillary Clinton and Republicans may back Donald Trump, others will vote for Libertarian Gary Johnson or the Green Party's Jill Stein.

The bigger parties say the smaller parties are "spoilers." Smaller parties protest their exclusion from debates and say the major party candidates amount to the lesser of two evils.

We need to stop this cycle of blame. That's why we're asking you to join us in an opportunity to turn our lose-lose election rules into a win-win— where all parties compete fairly, and you can vote your conscience. Ranked Choice Voting is a simple solution for the problems of vote-splitting and spoiler candidacies.

Measure 2-100 will enact Ranked Choice Voting for Benton County elections. Ranked Choice Voting is already being used successfully in a growing number of cities including Portland, Maine and both Minneapolis and St. Paul, Minnesota.

Ranked Choice Voting means more competition for your vote – encouraging candidates to focus on issues, reach out to more voters, and run more positive campaigns.

The case for ranked choice voting is nonpartisan. Measure 2-100 is supported by five Oregon political parties and many trusted organizations including:

- Alliance for Democracy
- Benton County Community Rights Coalition
- Fair Vote Action
- League of Women Voters of Corvallis
- Mid Valley Health Care Advocates
- Move to Amend, Corvallis
- NAACP, Corvallis
- Oregon Unitarian Universalist Voices for Justice

We in Benton County can blaze a path for Oregonians to uphold majority representation, give voters more choices, and make campaigns more positive.

Please join all of us in voting "Yes" on Measure 2-100.

(This information furnished by Stephanie W Hampton)

BENTON COUNTY MEASURE 2-100

ARGUMENT FOR:

FIVE DIFFERENT POLITICAL PARTIES AGREE YES ON RANKED CHOICE VOTING, MEASURE 2-100

BENTON COUNTY DEMOCRATIC PARTY SUPPORTS RANKED CHOICE VOTING

Ranked Choice Voting Ensures Majority Representation—Candidates will always be elected with more than 50% of the vote.

INDEPENDENT PARTY OF OREGON SUPPORTS RANKED CHOICE VOTING

Ranked Choice Voting Puts Voters in Control of Elections by allowing us to rank candidates in order of preference.

PACIFIC GREEN PARTY OF OREGON SUPPORTS RANKED CHOICE VOTING

Ranked Choice Voting Gives Us More Choices and as a Result Increases Voter Turnout

LIBERTARIAN PARTY OF OREGON SUPPORTS RANKED CHOICE VOTING

Ranked Choice Voting Puts More Power in the Hands of Voters – Our Voices Simply Matter More

OREGON PROGRESSIVE PARTY SUPPORTS RANKED CHOICE VOTING

Ranked Choice Voting Encourages New Voices to Participate in Elections

YES ON MEASURE 2-100 - RANKED CHOICE VOTING

(This information furnished by Better Ballot Benton)

ARGUMENT FOR:

BENTON COUNTY OFFICIALS SUPPORT RANKED CHOICE VOTING

Ranked Choice Voting Upholds Majority Representation and Gives Voters More Choice

As current and former local officials, we understand that candidates opposed by most people are sometimes elected to office with less than 50% of the vote. This happens because of “vote-splitting” – when voters opposing one candidate split their votes among two or more alternatives. Ranked Choice Voting solves this problem. You rank candidates in order of preference: 1, 2, 3. If your favorite candidate can't win, your vote is instantly counted for your second choice.

Ranked Choice Voting gives you more choice. You can vote for who you want and never have to worry about wasting your vote or choosing between the lesser of two evils.

SIMPLY PUT: Ranked Choice Voting gives voters more choice and means that local officials will always be elected by a majority of those they represent. It's how we ensure elected officials will be accountable to voters. That's what democracy is all about—and why we support Ranked Choice Voting.

PLEASE JOIN US IN VOTING “YES” ON MEASURE 2-100

- State Senator Sara Gelser
- State Representative Dan Rayfield
- Former State Senator Cliff Trow
- Corvallis Mayor Biff Traber
- Corvallis City Councilor Bill Glassmire
- Corvallis City Councilor Hal Brauner
- Corvallis City Councilor Mike Beilstein
- Corvallis City Councilor Roen Hogg
- Corvallis City Councilor Zach Baker
- Former Corvallis City Council President Richard Hervey
- Former Corvallis City Councilor George Grosch
- Benton County Commissioner Annabelle Jaramillo
- Benton County Commissioner Anne Schuster
- Benton County Commissioner Candidate Xan Augerot
- Benton County Commissioner Jay Dixon
- Benton County Planning Commissioner Blair Bobier
- Former Vermont Governor, Howard Dean

(This information furnished by State Senator Sara Gelser)

BENTON COUNTY MEASURE 2-100

ARGUMENT FOR:

POLITICAL SCIENCE PROFESSORS SUPPORT RANKED CHOICE VOTING

Vote Yes on Measure 2-100

Ranked choice voting is a proven system used across the United States from Maine to Minnesota. It's a better way to vote and makes the results of our elections more democratic, so the results better reflect the will of the voters.

Among other benefits, Ranked Choice Voting encourages new voices in the political process and provides voters a more meaningful opportunity to support independent candidates and alternative political parties. Under our current system, voters who want to support an independent or alternative candidate contend with the problem that their votes may be considered "wasted" or "protest" votes, since their candidates usually have little chance of winning. These alternative voices are often called "spoilers;" the argument being they take votes from other candidates who have a better chance of winning. With Ranked Choice Voting, these problems are eliminated.

The current presidential election cycle perfectly demonstrates how Ranked Choice Voting will improve our elections.

The Republican presidential primary demonstrated the problem of vote-splitting. With 17 candidates running, voters who supported more moderate or centrist candidates split their votes. The "winner-take-all" system allowed an extremist candidate with just a minority of support to win the nomination. If the Republican primaries used Ranked Choice Voting, the election process would have produced a more moderate candidate with broader support. This is what the voters truly wanted – but were denied.

Now, in the general presidential election, many voters feel compelled to choose from what they consider the "lesser of two evils." Ranked Choice Voting would give voters the power to vote for whom they want, without fear of electing the candidate they like least.

After careful consideration we support Ranked Choice Voting - Measure 2-100

- **Dr. Richard Clinton**, Oregon State University Political Science Professor Emeritus
- **Dr. Edwin D. Dover**, Western Oregon University Political Science Professor

(This information furnished by Richard Clinton)

ARGUMENT FOR:

YES ON 2-100 RANKED CHOICE VOTING

More Choices - More Voices - Majority Representation

Year after year politicians opposed by most people are elected with less than 50 percent of the vote. This happens when people opposing this politician split their votes among two or more other candidates. Ranked Choice Voting fixes this, giving voters more power by allowing them to rank candidates- 1, 2, 3 and so on. If your favorite candidate can't win, your vote is instantly counted for your second choice. Ranked Choice means politicians will always be elected by the majority of people they represent.

We Get More Choice as Voters

Ranked Choice Voting gives you more choice by allowing you to rank candidates in order of preference. You can vote for who you want, instead of who is more likely to win. You never have to choose between throwing your vote away, or voting for the lesser of two evils. Your voice simply matters more with Ranked Choice Voting.

Our Candidates Will Always Be Elected With a Majority

Currently, our laws don't require candidates to get a majority (more than 50%) of votes to be elected. Ranked Choice Voting fixes this and ensures that our politicians are elected with more than 50% of the vote. It's a simple change that upholds our tradition of electing politicians through the will of the people. When politicians are elected with a majority they are more accountable to all of us, the voters.

All of us Benefit with More Voices and More Participation

Many of us have become discouraged with politics. Some voters choose not to vote at all. In cities and counties already using Ranked Choice Voting, voters have more candidates and viewpoints to choose from because it encourages new voices to run for office. As a result, voters are more engaged and more people vote because their voice matters more.

YES ON 2-100

www.betterballotbenton.com

(This information furnished by Blair Bobier)

CITY OF ALBANY MEASURE 22-156

BALLOT TITLE

CAPTION: Prohibits certain marijuana registrants and/or licensees in Albany

QUESTION: Shall the City of Albany prohibit recreational marijuana producers, processors, wholesalers, and retailers within the City limits?

SUMMARY: State law allows operation of registered medical marijuana processors, medical marijuana dispensaries and licensed recreational marijuana producers, processors, wholesalers, and retailers. State law provides that a City Council may adopt an ordinance to be referred to the voters to prohibit the establishment of any of those registered or licensed activities.

Approval of this measure would prohibit the establishment of recreational marijuana producers, processors, wholesalers, and retailers within the area subject to the jurisdiction of the City. If approved, this measure will have no impact on medical marijuana processors or medical marijuana dispensaries located in Albany.

If this measure is approved, the City will be ineligible to receive distributions of state marijuana tax revenues and will be unable to impose a local tax or fee on the production, processing or sale of marijuana or any product into which marijuana has been incorporated.

EXPLANATORY STATEMENT

Approval of this measure would prohibit the establishment of certain marijuana activities within the City.

ORS 475B.400 to 475B.525 provides that the Oregon Health Authority will register medical marijuana processors and medical marijuana dispensaries. Medical marijuana processors compound or convert marijuana into concentrates, extracts, edible products, and other products intended for human consumption and use. Medical marijuana dispensaries facilitate the transfer of marijuana and marijuana products between patients, caregivers, processors, and growers. ORS 475B.005 to 475B.399 provides that the Oregon Liquor Control Commission will license recreational marijuana producers (those who manufacture, plant, cultivate, grow or harvest marijuana), processors, wholesalers, and retailers.

A City Council may adopt an ordinance prohibiting the establishment of any of those entities within the City, but the Council must refer the ordinance to the voters at a statewide general election. The Albany City Council has adopted an ordinance prohibiting the establishment of recreational marijuana producers, processors, wholesalers, and retailers within the City and, as a result, has referred this measure to the voters.

If approved, this measure would prohibit recreational marijuana producers, processors, wholesalers, and/or retailers within the City. Medical marijuana processors and medical marijuana dispensaries can continue operating in the City even if this measure is approved.

Approval of this measure has revenue impacts. Currently, ten percent of state marijuana tax revenues will be distributed to cities to assist local law enforcement in performing their duties under ORS 475B.760 (2). If approved, this measure would make the City ineligible to receive distributions of state marijuana tax revenues.

Currently, under ORS 475B.345, a City may impose up to a three percent tax on the sale of marijuana items by a marijuana retailer in the City. However, a City that adopts an ordinance prohibiting the establishment of medical marijuana processors, medical marijuana dispensaries, or recreational marijuana producers, processors, wholesalers, or retailers may not impose a local tax or fee on the production, processing or sale of marijuana or any product into which marijuana has been incorporated. Approval of this measure would therefore prevent the City from imposing a local tax on those activities.

(Submitted by City of Albany)

NO ARGUMENTS FOR THIS MEASURE WERE FILED

CITY OF ALBANY MEASURE 22-156

ARGUMENT AGAINST:

Vote No On Measure 22-156

Albany needs more jobs. The unemployment rate for Albany is over a point above the rest of Oregon. Unfortunately, Measure 22-156 will do the opposite. Instead of allowing an emerging industry in our state to flourish this measure would prohibit licensed, regulated businesses from operating in Albany – locking us out of needed jobs.

So far, there have been over 2,100 jobs created in the cannabis retail sector and wages for those workers in 2016 are expected to reach \$46 million. According to high-growth projections, up to 27% growth is anticipated in retail cannabis jobs by the end of 2017. By comparison, in 2015, Oregon's beer, wine and liquor sector employed 1,450 people and paid \$28 million in wages.

Statewide, the initial market of retail cannabis was almost \$300 million and total economic impacts for the state are projected to be over \$196 million by the end of 2017. Those are economic benefits shared with other industries that work with these retailers, such as construction, accounting, packaging, security, legal services, real estate and more. These are dollars that our local economy cannot afford to lose.

According to the Oregon Department of Revenue, through the first six months of 2016, Oregon has collected more than \$25 million in taxes on cannabis, millions more than the Oregon Liquor Control Commission's initial two-year projection of \$18.4 million. At this point, we are on pace to blow those projections out of the water by tens of millions of dollars. That is revenue that will go toward paying for police, schools and addiction programs.

Our city should not be sending these dollars down the road to another community.

Albany voted in November 2014 to legalize cannabis. We can't afford to cut ourselves off from this growing market.

Ray Kopczynski Albany City Councilor Ward III
Mitch Langjahr MacDonald Hardware
Shawn Aman Going Green Albany

(This information furnished by
Keep Albany Open for Business)

ARGUMENT AGAINST:

Don't Limit Treatment Options for Patients – Vote No on 22-156

Anyone who has suffered through chronic diseases/conditions like arthritis, migraine headaches or cancer know that what we may call traditional medications do not always work.

Everyone is different and while a commonly prescribed treatment might work for one person, it may have zero impact or a negative impact on the next. Many people have discovered that cannabis as an effective treatment to address their symptoms and control pain.

Measure 22-156 will limit access to cannabis for Albany residents who need it for health reasons.

The use of cannabis for folks dealing with debilitating diseases like cancer, MS and arthritis is well documented. Cannabis also has proven to help people dealing with a wide array of conditions from chronic pain to PTSD, stress/anxiety and more.

Albany residents' health options will be limited by Measure 22-156.

Having local health options is an important part of a robust community and Measure 22-156 eliminates our friends' and neighbors' ability to access a medical treatment that may work best for them.

Measure 22-156 will promote underground cannabis sales that may be dangerous.

When entering a drug store, we expect that store operates under regulations that ensure that the treatments they are dispensing are safe. People who need cannabis for medical conditions deserve the same protection. Regulations and testing ensure that people who buy cannabis from licensed businesses can have confidence in the medicine they are buying. Measure 22-156 will prevent Albany from establishing a licensed well-regulated cannabis industry that ensures its products are safe for patients.

The City of Albany should not be in the business of limiting medical options for its citizens and Albany residents should not be forced to travel to secure needed treatments.

Vote No on Measure 22-156

Leesa Bright Paralegal
Dick Olsen Albany City Councilman
Jerry Copeland

(This information furnished by
Keep Albany Open for Business)

CITY OF ALBANY MEASURE 22-156

ARGUMENT AGAINST:**Vote No On Measure 22-156**

As parents, we don't want our children, or any youth in our community, to smoke marijuana. That's why Measure 91's passage in 2014, supported by the majority of voters in Albany, was so important. The passage of Measure 91, struck a serious blow to an unregulated black market that had no problem selling to children in and around our schools. In its place, we now have licensed, regulated businesses that provide needed jobs in our community and pay taxes which fund our schools, police and addiction programs. That's why we're voting no on Measure 22-156.

Like alcohol in the early 1900s, prohibition has provided incentive to criminal organizations to produce and distribute marijuana. Drug dealers don't ask for IDs. For years, it has been easier for a teenager to obtain marijuana than a six-pack of beer. With new strict controls and regulation enacted in Oregon, that is changing. Removing production and sales from the criminal market, we take a stand in keeping marijuana out of the hands of kids.

In addition to reducing the criminal element, legalization has created many good paying jobs throughout the state. According to research, the retail market has created over 2,100 jobs and will pay those workers an expected \$46 million this year. With our unemployment rate over a point above the state average, these are jobs that Albany needs to keep.

This industry is provides economic opportunity to the many different businesses that serve the industry. It is bringing in investors, who are spending those dollars locally, and according to the Department of Revenue, it is also bringing in vitally needed taxes at higher levels than anticipated.

Prohibition did not work, and it has ended statewide. There is no reason to continue this failed policy in Albany. Vote no on 22-156.

Laura Fisher Parent
Querina Landauer
Debra King

(This information furnished by
Keep Albany Open for Business)

CITY OF ALBANY MEASURE 22-157

BALLOT TITLE

CAPTION: Imposes city tax on marijuana retailer's sale of marijuana items

QUESTION: Shall Albany impose a tax on the sale of marijuana items by a marijuana retailer within City limits?

SUMMARY: Under state law, a city council may adopt an ordinance to be referred to the voters of the city imposing up to a three percent tax on the sale of marijuana items in the city by a licensed marijuana retailer.

Approval of this measure would impose a tax, set by resolution of the City Council and not to exceed three (3) percent, on the sale of marijuana items in the city by a marijuana retailer. The tax would be collected at the point of sale and remitted by the marijuana retailer.

Under state law, a city that adopts an ordinance prohibiting the establishment of a medical marijuana processor, medical marijuana dispensary, or recreational marijuana producer, processor, wholesaler, or retailer may not impose a tax on the production, processing or sale of marijuana or any product into which marijuana has been incorporated. This measure would allow a tax rate above zero (0) percent only if the measure proposing to prohibit the establishment of any of those marijuana entities does not pass by a majority of votes.

EXPLANATORY STATEMENT

Approval of this measure would impose a tax on the sale of marijuana items by a marijuana retailer within the city. There are no restrictions on how the city may use the revenues generated by this tax. However, the tax will become operative only if the ballot measure prohibiting the establishment of certain marijuana registrants and licensees fails.

Under Measure 91, adopted by Oregon voters in November 2014 and amended by the Legislature in 2015, the Oregon Liquor Control Commission must license the retail sale of recreational marijuana. The 2015 Legislation provides that a city council may adopt an ordinance imposing up to a three percent tax on the sale of marijuana items (which include marijuana concentrates, extracts, edibles, and other products intended for human consumption and use) by retail licensees in the city, but the council must refer that ordinance to the voters at a statewide general election. The Albany City Council has adopted an ordinance imposing a tax on the sale of marijuana items by a retail licensee in the city, and, as a result, has referred this measure to the voters.

However, this tax will become operative only if the ballot measure prohibiting the establishment of certain marijuana registrants and licensees fails. Under state law, a city that adopts an ordinance that prohibits the establishment in the area subject to the jurisdiction of the city of a medical marijuana processor, medical marijuana dispensary, or recreational marijuana producer, processor, wholesaler, or retailer may not impose a tax or fee on the production, processing or sale of marijuana or any product into which marijuana has been incorporated. As a result, if the voters pass a prohibition ordinance, this tax will not become operative, even if it also receives a majority of votes.

(Submitted by City of Albany)

**NO ARGUMENTS FOR OR AGAINST
THIS MEASURE WERE FILED**

CITY OF CORVALLIS MEASURE 2-95

BALLOT TITLE

CAPTION: Oregon shall have an affordable universal healthcare system

QUESTION: Shall the Oregon legislature, through a public process, develop a health care system that serves all Oregonians?

SUMMARY: This non-binding advisory question asks whether the Oregon State Legislature in the 2017 session should establish a public process to develop a health care system that serves all Oregon residents. The goal of the public process is to develop a proposal that will be referred to voters or enacted by the legislature. The health care system it develops will follow the legislative intent of ORS 414.018 (2011) and Oregon Laws 2013, Chapter 712 in allowing all Oregonians timely access to comprehensive health care, improving availability of desired healthcare providers, having effective cost controls, and emphasizing preventative care. The process of development for this system shall begin with findings and recommendations from a study authorized by Oregon Laws 2015, Chapter 725 to be reported to the 2017 regular session of the Legislative Assembly.

EXPLANATORY STATEMENT

This advisory question asks the voters of the City of Corvallis whether to urge the Oregon Legislature to develop a health care system that will reliably serve all Oregonians. An advisory question informs the Mayor and City Council of the will of the voters, and the Mayor and City Council may take official action, forwarding the results of the advisory vote to the Oregon Legislature.

Mid-Valley Health Care Advocates asked the City Council to bring the following question to the voters:

Shall the Oregon Legislature, through a public process, develop a health care system that serves all Oregonians?

The goal of the public process is to develop a proposal for a health care system that will be referred to voters or enacted by the legislature. The process would begin with the findings and recommendations from the study authorized by Oregon Laws 2015, Chapter 725 (contract granted to the RAND Corporation in May, 2016), which requires a report on this study to the Legislature during its regular 2017 session.

The study will compare four options for financing health care delivery in Oregon as prescribed by ORS 414.018 (2013) and Oregon Laws 2013, Chapter 712:

1. An option for a publicly financed single-payer model for financing privately delivered health care, decoupled from employment and any status other than residency. Commercial insurance coverage would be permitted for supplemental or non-essential health services.

- 2. An option that allows a person to choose between a publicly funded plan, with both a basic health program, and private insurance coverage.
- 3. The current health care financing system in this state.
- 4. An option for a plan with components that provide essential health benefits with preventive care and hospital services, access to commercial markets, but collects and distributes revenue, preserves options and choices, addresses deductibles with respect to income earners above and below 400% of the federal poverty guidelines, accesses federal funding, and identifies program savings.

The public process would allow Oregonians to review, comment on, and refine the determined best option and develop proposals for the legislature to adopt or refer that option to the voters.

* Process yet to be defined but may be similar to the process used in creating the Oregon Health Plan and the Coordinated Care Organization system.

(Submitted by City of Corvallis)

NO ARGUMENTS AGAINST THIS MEASURE WERE FILED

CITY OF CORVALLIS MEASURE 2-95

ARGUMENT FOR:

VOTE **YES** on measure 2-95 urging the Oregon Legislature to take action to improve health care for all Oregonians.

1. Why we need further legislative action.

• Unhealthy Outcomes:

- Business growth, sustainability, and innovation are saddled by the cost of health care.
- Freedom of choice for workers and business owners is restricted by the linkage of employment to health insurance.
- We are **near the bottom** in health ratings among industrialized countries.

• High Cost:

- run-away costs increasingly strains city, county, and state budgets.
- drains profit and energy from business,
- drives patients into financial crisis,

• Complexity and Obscurity:

- makes planning for health costs difficult or impossible.
- confounds choice of insurance coverage and access to care.

• Lack of Fairness:

- Many people in our state still do not have regular access to care.
- High co-pays and deductibles obstruct access to care even for the insured.
- Dividing people into groups having different charges and provider access creates inefficiency and health inequity.

2. What we expect from further health care legislation.

- A statewide public process to develop and oversee a health system that represents all Oregonians and removes incentives for profiteering.
- Reduced costs through standardization of charges and simplified administration.
- Elimination of financial incentives to under- or over-treat patients.
- Equal access to health care.
- Better health for all, a healthier workforce, and a better economy.

Rev. Matt Gough, Rev. Jen Butler, Interfaith Healthcare Network, Clifford Trow, JoAnn Trow, Tony Van Vliet, Ron and Shirley Loe, owners, Woodcastle, Catherine Mathews, Christopher Mathews, Marge Stevens, Rachel Ozretich, Move To Amend-Corvallis, Charlie Fautin, RN, Nadine Grzeskowiak, RN, Tatiana Dierwechter, MSW, Chinh Le, M.D., David Grube, M.D., Cosimo Storniolo, M.D., Paul Hochfeld, M.D., Bruce Thomson, M.D., Lara Gamelin, M.D., Mike Beilstein, Biff Traber, Bill Glassmire, City Councilor, Penny York, City Councilor, PNHP-Corvallis

(This information furnished by Roberta Hall, Mid Valley Health Care Advocates)

CITY OF CORVALLIS MEASURE 2-96

BALLOT TITLE

CAPTION: Imposes city tax on marijuana retailer's sale of marijuana items

QUESTION: Shall Corvallis adopt Ordinance 2016-12 imposing a tax on the sale of marijuana items by a marijuana retailer?

SUMMARY: Under state law, the City Council may adopt an ordinance to be referred to the voters of the city imposing a tax on the sale of marijuana items in the city by a licensed marijuana retailer. Approval of this measure would impose a tax, set by resolution of City Council, not to exceed the maximum allowed by State law (currently three (3) percent) on the sale of marijuana items in the city by a marijuana retailer. The tax would be collected at the point of sale and remitted by the marijuana retailer. Under state law, a city that adopts an ordinance prohibiting the establishment of a medical marijuana processor, medical marijuana dispensary, or recreational marijuana producer, processor, wholesaler, or retailer may not impose a tax on the production, processing or sale of marijuana or any product into which marijuana has been incorporated. Currently, no prohibition ordinance is proposed, but if by an act of Council or an act of the voters, marijuana facilities were later banned, the tax rate would be set to zero (0).

EXPLANATORY STATEMENT

Approval of this measure would impose a tax on the sale of marijuana items by a recreational marijuana retailer within the city. If approved, the revenues from this tax are estimated to be \$95,000. There are no restrictions on how the city may use the revenues generated by this tax.

Under Measure 91, adopted by Oregon voters in November 2014 and amended by the Legislature in 2015, the Oregon Liquor Control Commission must license the retail sale of recreational marijuana. The 2015 Legislation provides that a city council may adopt an ordinance imposing up to a three percent tax on the sale of recreational marijuana items (which include marijuana concentrates, extracts, edibles, and other products intended for human consumption and use) by retail licensees in the city, but the council must refer that ordinance to the voters at a statewide general election. The City of Corvallis city council has adopted Ordinance 2016-12 imposing a tax on the sale of recreational marijuana items by a retail licensee in the city, and, as a result, has referred this measure to the voters.

Under state law, a city that adopts an ordinance that prohibits the establishment in the area subject to the jurisdiction of the city of a medical marijuana processor, medical marijuana dispensary, or recreational marijuana producer, processor, wholesaler, or retailer may not impose a tax or fee on the production, processing or sale of marijuana or any product into which marijuana has been incorporated. As a result, if the City later adopts a prohibition ordinance, either by act of City Council or act of the voters, this tax will no longer be operative.

(Submitted by City of Corvallis)

**NO ARGUMENTS FOR OR AGAINST
THIS MEASURE WERE FILED**

CITY OF CORVALLIS MEASURE 2-99

BALLOT TITLE

CAPTION: Proposed annexation of the Lawndale site

QUESTION: Shall the 2.41-acre Lawndale Annexation site be annexed?

SUMMARY: Approval of this measure would annex approximately 2.41 acres into the City of Corvallis, including 1.44 acres of private property associated with Benton County Assessor's Map 11-5- 25 BB (Tax Lots 1700, 1800, 1900, 2000, and 2100), and 0.97 acres of public right-of-way, associated with NE Lawndale Place and NE Belvue Street. The site to be annexed is located in northeast Corvallis, approximately 1,000 feet east of Highway 99W, and approximately 175 feet north of NE Circle Boulevard. The site would be zoned PD(MUE) (Mixed Use Employment with a Planned Development Overlay), if the annexation is approved.

EXPLANATORY STATEMENT

The 2.41-acre area proposed for annexation is located in northeast Corvallis, approximately 1,000 feet east of Highway 99W, and approximately 175 feet north of NE Circle Boulevard. The area includes 1.44 acres of private property associated with Benton County Assessor's Map 11-5-25 BB (Tax Lots 1700, 1800, 1900, 2000, and 2100), and 0.97 acres of public right-of-way, associated with NE Lawndale Place and NE Belvue Street. The Comprehensive Plan Map designation for the property is General Industrial. If annexed, the property would be zoned PD(MUE) (Mixed Use Employment with a Planned Development Overlay). The proposed zone is consistent with the Comprehensive Plan Map designation.

The annexation site is currently developed with single family residences. Any future development or re-development on the property would have to be consistent with Land Development Code requirements regarding uses, setbacks, vehicle parking, open space, and other applicable development standards.

This project was analyzed for compatibility impacts and public service impacts, including potential traffic and utility impacts. Analysis found consistency with the City's compatibility criteria and the City's adopted Master Plans for items such as transportation, parks, trails, sewer, water, and storm drainage.

This land was identified for eventual annexation and development in 1980 when the urban growth boundary was adopted. This was reaffirmed with the acknowledgment of the City's 1998 Comprehensive Plan update. Water, sewer, and storm drainage services are available near the site, and are adequately sized to serve potential development on the site. Some additional public facility and service improvements would need to be constructed with future development of this site to satisfy Land Development Code Chapter 4.0 criteria. City ordinances specify that developers will be responsible for on-site and off-site costs associated with street and utility improvements needed for land development projects.

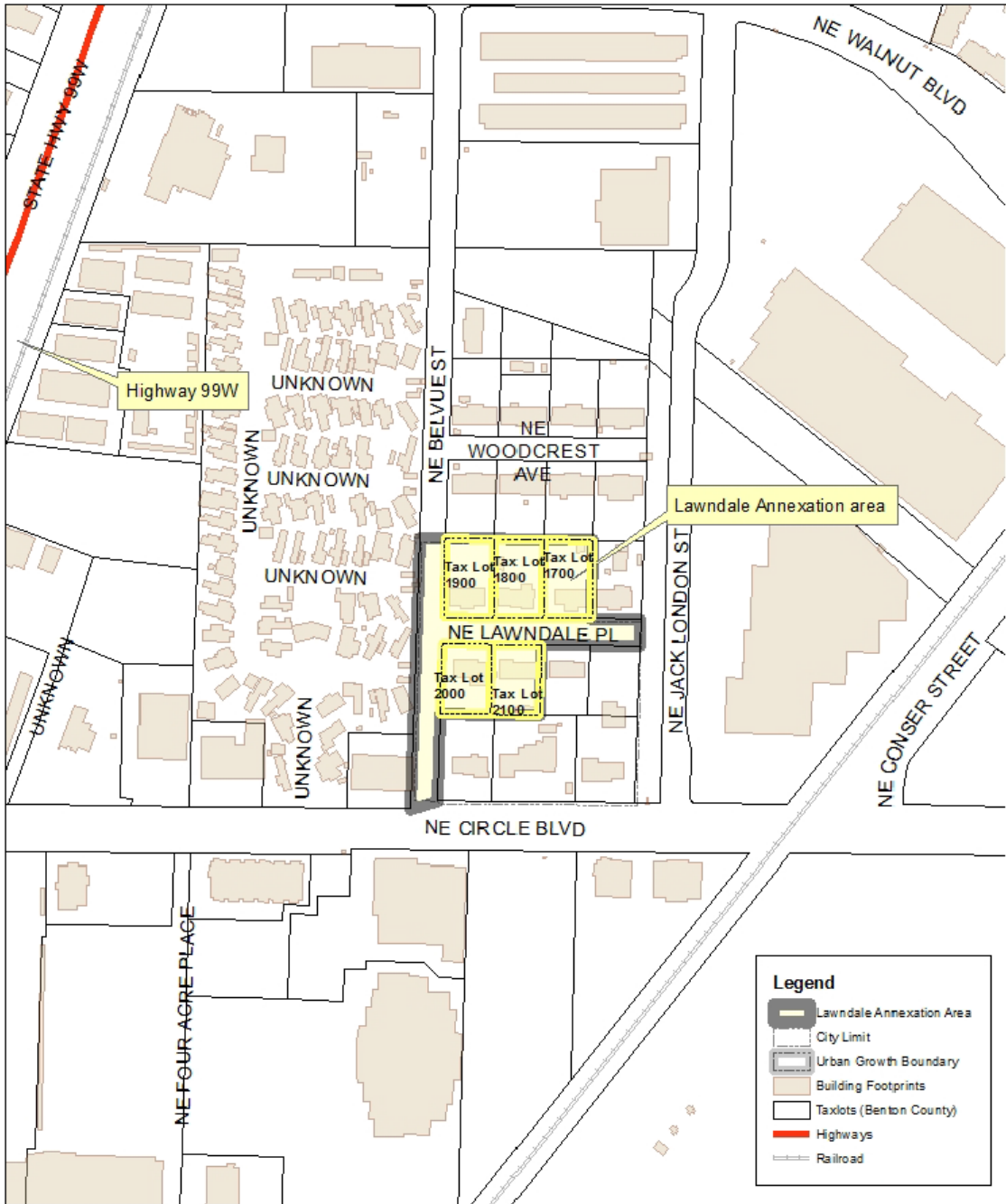
The City Council found the annexation request to be consistent with the policies of the Comprehensive Plan, Corvallis Land Development Code, and other City and State policies and standards. Citizens are encouraged to become informed about the annexation request. Full copies of the project's staff report and Planning Commission and City Council hearing minutes are available at the Corvallis-Benton County Public Library (645 Monroe Avenue).

(Submitted by City of Corvallis)

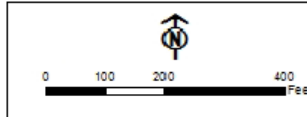
NO ARGUMENTS FOR OR AGAINST THIS MEASURE WERE FILED

CITY OF CORVALLIS MEASURE 2-99

Vicinity Map



Lawndale Annexation
ANN16-00001 / ZDC16-00001



Corvallis Planning Division
501 SW Madison Ave
Corvallis, OR 97333
541.766.6908
Planning@CorvallisOregon.gov

CITY OF PHILOMATH MEASURE 2-94

BALLOT TITLE

CAPTION: Imposes city tax on marijuana retailer's sale of marijuana items

QUESTION: Shall Philomath impose a tax on the sale of marijuana items by a marijuana retailer within City limits?

SUMMARY: Under state law, a city council may adopt an ordinance to be referred to the voters of the city imposing up to a three percent tax on the sale of marijuana items in the city by a licensed marijuana retailer.

Approval of this measure would impose a tax, set by resolution of City Council and not to exceed three (3) percent, on the sale of marijuana items in the city by a marijuana retailer. The tax would be collected at the point of sale and remitted by the marijuana retailer. Under this measure, the City would have the authority to explore an agreement with the State of Oregon for the state to collect the local tax.

Nothing in this measure sanctions the sale of marijuana or exempts a marijuana retailer from compliance with state and local laws and regulations.

EXPLANATORY STATEMENT

Approval of this measure would impose a tax on the sale of marijuana items by a marijuana retailer within the city. If approved, the revenues from this tax are estimated to be \$0. There are no restrictions on how the city may use the revenues generated by this tax.

Under Measure 91, adopted by Oregon voters in November 2014 and amended by the Legislature in 2015, the Oregon Liquor Control Commission must license the retail sale of recreational marijuana. The 2015 Legislation provides that a city council may adopt an ordinance imposing up to a three percent tax on the sale of marijuana items (which include marijuana concentrates, extracts, edibles, and other products intended for human consumption and use) by retail licensees in the city, but the council must refer that ordinance to the voters at a statewide general election. The City of Philomath city council has adopted an ordinance imposing a tax on the sale of marijuana items by a retail licensee in the city, and, as a result, has referred this measure to the voters.

This measure is independent of any other regulation of marijuana retailers. Therefore, nothing in this measure sanctions the sale of marijuana or exempts a marijuana retailer from compliance with state and local laws and regulations. A marijuana retailer would be required to comply with all other applicable laws and regulations.

(Submitted by City of Philomath)

**NO ARGUMENTS FOR OR AGAINST
THIS MEASURE WERE FILED**

CITY OF PHILOMATH MEASURE 2-98

BALLOT TITLE

CAPTION: A measure proposing annexation of the Skirvin Farms LLC property

QUESTION: Shall the City of Philomath annex the Skirvin Farms LLC property, 22.84 acres located at 402 South 13th Street?

SUMMARY: A "Yes" vote on this measure by a majority of voters would annex approximately 22.84 acres of land zoned Low Density Residential to the City of Philomath. The property to be annexed is generally located at 402 South 13th Street, Philomath (T12S-R6W-Sec. 12C, Tax Lots 200 and 500 and T12S-R6W-Sec. 12CB, Tax Lots 3901 and 4200). The parcels lie entirely within Benton County. The owner has not provided a conceptual plan for development. Any development proposal on this property shall require review and approval by the Planning Commission at a public hearing. Any future owner of this property who may propose a different development plan must pass through the same plan review process and public hearing. The City is not speaking in favor or against any conceptual plan.

EXPLANATORY STATEMENT

The Skirvin Farms Annexation consists of approximately 22.84 acres generally and is identified as the Philomath Rodeo Grounds and adjacent logging shop and idle lands and located at 402 South 13th Street. The property is zoned Low Density Residential by Benton County. Upon annexation to the City, it would be zoned Single Family Residential. A "yes" vote on this measure supports approval of the annexation. If a majority of the voters approve the measure by a "yes" vote, the City would annex the property.

The applicant has submitted a general land use plan that includes the existing rodeo grounds with some residential development anticipated for the remaining land. Theoretically, the subject property could accommodate 113 single-family lots; however, there is no current intent to relocate the rodeo grounds. The Local Wetland Inventory indicates a watercourse or drainage way that runs through the subject property, along probable jurisdictional wetlands that are protected under the City's Development Code, as well as state and federal regulations.

City services including water, sewer, drainage and streets are available to be extended into the subject property. Waterlines are available near the subject property, but the existing system does not conform to the City's master plan for capacity and fire flows. System improvements needed to remedy this situation will be paid for directly by the developer and/or System Development Charges. Sewer is available near the property in the form of the 21-inch gravity main at the intersection of 13th Street and Cedar Street and an 8-inch gravity main along a portion of 13th Street, which is anticipated to be able to serve a portion of the northerly end of the property. Development of the southern portion of the property will need to be upgraded as shown in the City's

Wastewater Facilities Plan. Access to the property will be from new streets connected to 13th Street unless additional right-of-way is acquired to allow for the extension of 11th Street along the west boundary of the property. Public right-of-way along the Cedar Street alignment extends into the property from 13th Street, but is currently undeveloped. Drainage from the site and from property to the north is currently via storm drainage improvements along the east and west boundaries of the site, flowing to the Marys River. The applicant will be required to provide for on-site detention of storm water and will be required to provide the City with a comprehensive strategy to address storm water impacts from development.

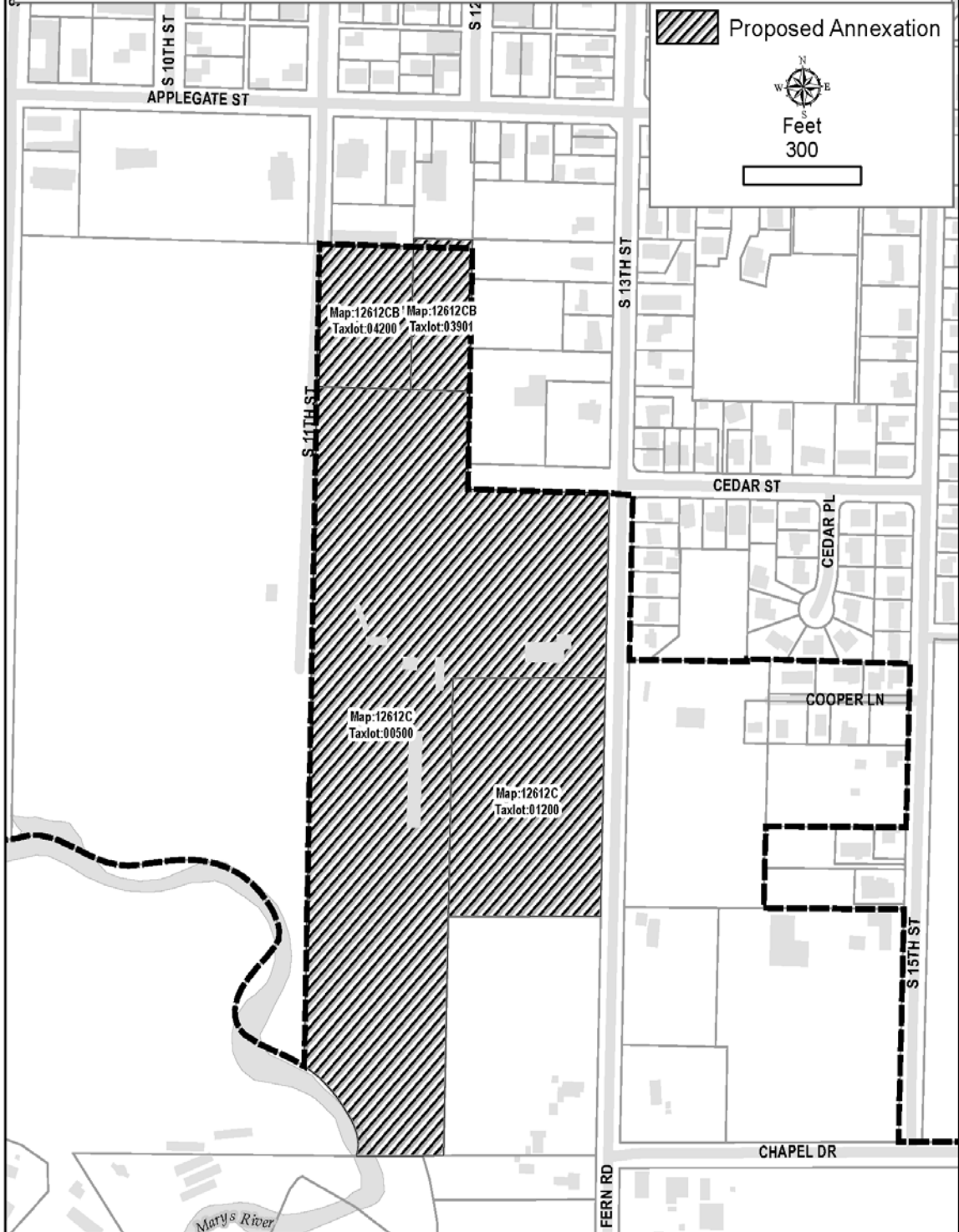
The conceptual plan associated with this annexation request may change. Upon annexation, any development proposal on this property shall require review and approval by the Planning Commission at a public hearing. Any future owner of this property who may propose a different development plan must pass through the same plan review process and public hearing. The City is not speaking in favor or against this conceptual plan.

(Submitted by City of Philomath)

NO ARGUMENTS AGAINST THIS MEASURE WERE FILED

CITY OF PHILOMATH MEASURE 2-98

Proposed Philomath Skirvin Annexation



CITY OF PHILOMATH MEASURE 2-98

ARGUMENT FOR:

Vote YES on Ballot Measure 2-98

The Philomath Rodeo facilities are located on private land owned by Skirvin Farms LLC. The cooperation between Skirvin Farms, the Philomath Frolic & Rodeo, Inc., and the City of Philomath has worked very well for over 30 years, giving the Philomath community an annual signature event.

It is now time for a formal agreement between the above named parties to put the annual event on a more certain future. Due to significant differences between the Benton County zoning code and the City of Philomath zoning code, it will be much easier to achieve an agreement between the parties if the Philomath voters approve Skirvin Farms LLC annexation request.

Skirvin Farms LLC annexation application did not include a general land use plan or a conceptual development plan because they have no plans to develop the property. The annexation application was made to obtain Philomath water and sewer services to its shop building and to make it easier to work with the City and/or the Frolic & Rodeo members to give the Frolic & Rodeo a more certain future.

The Comprehensive Plan requires the City to show a *theoretical* housing density without consideration for natural restraints, such as flood plain, wetlands, drainage or significant existing development, which would make any development on the property very difficult. The applicant hopes the *theoretical* number of single family lots does not confuse the voters as to Skirvin Farms LLC intentions.

Skirvin Farms LLC made a commitment to the City Council at the public hearing to present a framework proposal to the city and/or the Frolic & Rodeo, Inc., within 30 days after the annexation approval. The framework proposal will include the 22.84 acres.

Vote YES on Ballot Measure 2-98 to move this process forward.

(This information furnished by Skirvin Farms LLC; Paul Skirvin; Lola Skirvin; Marlyn D. Weaver, Principal Broker Willamette West Real Estate Agent for Skirvin Farms LLC)

ARGUMENT FOR:

The Philomath Frolic & Rodeo supports the Skirvin Farms, LLC Annexation and encourages you to vote YES on Measure 2-98.

For the past 63 years, the Philomath Frolic & Rodeo, a non-profit organization made up entirely of volunteers, has put on the community's biggest and most anticipated event of the year. The fun-filled weekend brings neighbors, service clubs, schools and local business together to celebrate everything great about Philomath's past and future.

The Frolic & Rodeo does not currently own the rodeo grounds. We plan to purchase the grounds once they are annexed into the city. Owning the grounds ourselves will help ensure the Frolic & Rodeo continues to take place for years to come.

Please support your Frolic & Rodeo by voting YES on measure 2-98, a measure proposing annexation of the Skirvin Farms, LLC property.

(This information furnished by the Executive Board of the Philomath Frolic & Rodeo)

CITY OF PHILOMATH MEASURE 2-102

BALLOT TITLE

CAPTION: A measure proposing annexation of the Chapel Drive LLC property

QUESTION: Shall the Chapel Drive LLC property, 159-acres located north of Chapel Drive between South 23rd and 30th Streets, be annexed?

SUMMARY: A "Yes" vote would support the annexation of the property into the City of Philomath. Approval of this measure by a majority of voters would annex approximately 159 acres of land zoned Low Density Residential and Commercial into the City of Philomath. The property to be annexed is generally located north of Chapel Drive between South 23rd and 30th Streets (T12S-R5W-Sec. 7, Tax Lots 500, 502, 503 and 504). The parcels lie entirely within Benton County. Upon annexation, the property would be zoned City of Philomath R1 (Low Density Residential) with five acres of C2 (General Commercial). Development of property is not required at the time of annexation. Any development proposal on this property shall require review and approval by the Planning Commission at a public hearing. Any future owner of this property who may propose a different development plan must pass through the same plan review process and public hearing. The City is not speaking in favor or against any conceptual plan.

Development of property is not required at the time of annexation. When development occurs, it must conform to the zoning designation then in effect. The zoning of any property may be changed following legally required public notice and a public hearing. The annexation would place the property within the City of Philomath, subject to the City's tax rates.

Additional information and land use findings regarding the proposed annexation are contained in the staff report dated July 11, 2016. Copies of the staff report are available for public review at Philomath City Hall, 400 Applegate Street, Philomath, Oregon. The City is not speaking in favor or against this conceptual plan.

(Submitted by City of Philomath)

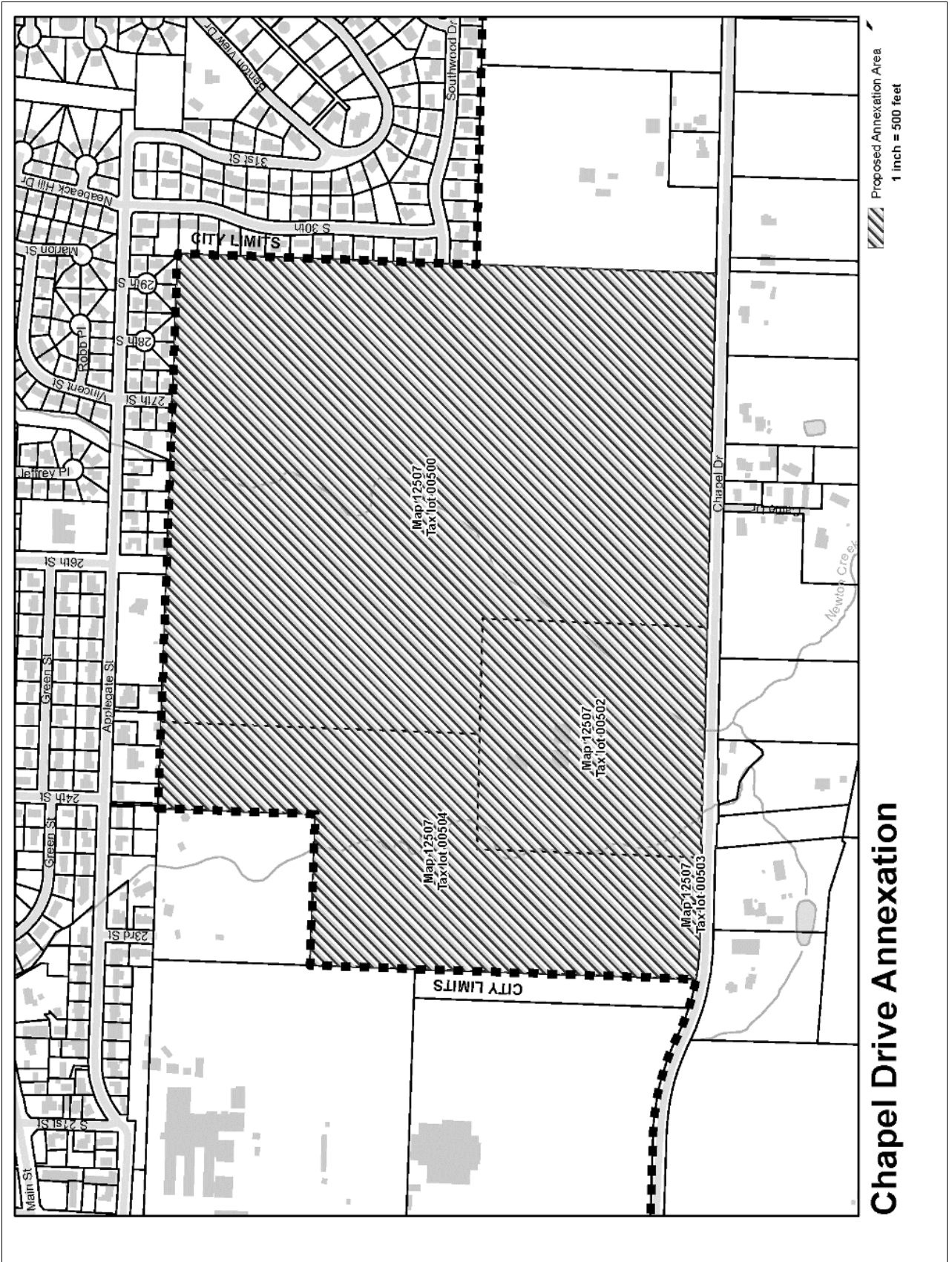
EXPLANATORY STATEMENT

If approved by the voters, this measure would result in annexation of approximately 159 acres into the City of Philomath. The City Council has found the proposed annexation meets all applicable land use laws of the State of Oregon and the City of Philomath. The City Charter requires submitting this annexation to the voters.

The property proposed for annexation is generally located north of Chapel Drive between South 23rd and 30th Streets. The entire property is located within the Urban Growth Boundary, and is designated in the Philomath Comprehensive Plan as "Low Density Residential" and "Commercial." Upon annexation into the City, it would be zoned R1 (Low Density Residential), with five acres of C2 (General Commercial). R1 zoning would typically permit single family residential land uses and C2 zoning would typically permit general commercial uses.

This annexation was requested by petition of the developer. The conceptual plan submitted shows the phased development of low density housing, parks, trails and approximately five acres of commercial area. The conceptual plan may change. Upon annexation, development proposals for this property will require a public hearing followed by the review and approval of the Planning Commission. Any future owner of this property who may propose a different development plan must pass through the same plan review process and public hearing.

CITY OF PHILOMATH MEASURE 2-102



CITY OF PHILOMATH MEASURE 2-102

ARGUMENT FOR:

Philomath is in serious need of housing. Approval of this proposed annexation will provide an opportunity for families to secure housing and a stake in Philomath's future. It will open the door for positive growth within the community and our schools. Without annexation, the city will have little say in how and what is developed. With annexation, citizens will continue to have a voice in how the property is developed. The Planning Commission and the City Council have addressed the impact of this planned development and their approval to bring it to the voters speaks to their due diligence. Please join us in making a better community by voting "YES" on 2-102.

- Rod Harvey
- Doris Harvey
- Bob Glathar
- Kay Glathar
- Jeannine A. Gay
- Van O. Hunsaker
- Dale Collins
- Don Cruise
- Laura Kildea
- Jim Kildea

(This information furnished by Rod Harvey)

ARGUMENT FOR:

As the Mayor of the City of Philomath, I can see the positive impacts that the Chapel Drive LLC Annexation will have for Philomath. Our area needs single family housing, students for our schools, and a larger tax base. The housing will be built in phases that will take years to build. The annexation is also beautifully designed with parks and multi-use paths that will benefit the entire community. The developer is responsible for paying for all the infrastructure within the development itself that must be approved by the City before any houses are built.

Please join me with a yes vote for a great addition to our community.

Rocky A. Sloan
Mayor of Philomath

(This information furnished by Rocky A Sloan)

CITY OF PHILOMATH MEASURE 2-102

ARGUMENT FOR:

As a six year volunteer member of the City of Philomath Budget Committee, I support the Chapel Drive Annexation for the following reasons:

1. The City of Philomath has a plan for long term growth. Philomath already has been preparing its infrastructure to handle additional housing, including water sufficiency, sewage treatment, and overall capacity to handle managed population growth.
2. Philomath citizens have a strong city administration and an informed city council and mayor. These people understand the demanding priorities and issues Philomath faces in order to remain a desirable community in which to live.
3. Without annexation, there is insufficient land for affordable new residential development within the current city boundary.
4. The proposed land annexation lies within Philomath's existing Urban Growth Boundary. Furthermore, the location is an easy walk to Philomath's primary, middle, and new high school.
5. The City of Philomath's tax base needs to grow via revenue from new home construction and new residents moving to Philomath. The Chapel Drive site offers the best site for this growth.
6. There is no meaningful alternative to funding the city budget other than through real property taxation. If revenue from this source is insufficient, reduced services or personnel layoffs, or both, may occur.
7. Annexation does not give the developer free reign to proceed with development. Future City approvals with public input will be required.
8. Annexation also does not mean current Philomath property owners will inevitably experience adverse consequences.

I am convinced the best way to ensure Philomath's future as a safe and livable community is to broaden the City's tax base through planned and reasonable growth. This long term solution has its best chance of succeeding through the Chapel Drive annexation.

Please join me in voting yes on Measure 2-102.

(This information furnished by David M Low)

ARGUMENT FOR:

A "Yes" vote for the Chapel Drive annexation will provide stability for the Philomath School District, which has experienced declining enrollments in the last decade. Philomath passed a school bond to build capacity and improve schools but has been hamstrung by low enrollments and a lack of new housing in the city. A "Yes" vote will provide managed growth over the next 10-12 years. This annexation will provide a wide economic benefit for all citizens. Please be informed by visiting www.chapeldrive.com.

Join us and your elected city council, who voted unanimously to place this measure on the ballot. Let's create a livable place with adequate housing for the children who grow up in this great community so they are not compelled to move to other neighboring areas. Please join us in voting "Yes" on Measure 2-102.

(This information furnished by Philomath Citizens for Prosperity and Stability)

CITY OF PHILOMATH MEASURE 2-102

ARGUMENT AGAINST:

Should Philomath residents **trust** that *developers* will place highest priority on the best interests and well-being of residents? I believe that annexation of the Chapel Drive LLC property (large acreage between Chapel Drive and Applegate) would be detrimental to the quality of life in Philomath for the following reasons:

- There is no comprehensive design plan for this acreage that addresses the specifics and logistics of facilities necessary to support the housing tract development that approval of this annexation is being pursued to enable. A general conceptual plan has been proposed, which is subject to changes without voter approval after annexation (such as rezoning requests), that could result in erosion of livability conditions.
- Our already over-extended water and sewer systems cannot accommodate an expansion to serve the 660 homes that are planned to be built on this land, and there is no proposed plan to address this. We are already enduring the effects of insufficient water to meet current and future community needs.
- All Philomath residents would be required to pay for additional water service and storage facilities, sewer service expansion, additional police and fire-fighter staffing via increased property taxes (which are already very high).
- There would be increased vehicular traffic causing more delays and increased potential for accidents.
- Loss of green-space, natural setting, quiet environment, and animal habitat.
- The amount of noise, dust, and traffic of heavy equipment and construction crews for a lengthy project of this scope would be intolerable for anyone in proximity.
- The focus of any developer would be to maximize company profits; not on providing the infrastructure needed for the housing tract, nor for quality of life considerations of Philomath residents who are left to endure the complications and after-effects of such a large build-out.
- This annexation proposal has already been voted upon twice in past years, and rejected by the voters for good reasons.

PLEASE VOTE NO!

(This information furnished by Jeff Cohen)

ARGUMENT AGAINST:

CITIZENS OF PHILOMATH!

The Lowther Annexation truly is déjà vu all over again. In 2005 and 2006, these developers proposed the same annexation and the same 660 houses be built in Philomath. They were soundly defeated both times.

There is no firm plan for this development: the developers say they will prepare one after the land is annexed. In other words, they want us to approve the annexation without knowing what is going to be built!

The same issues exist now as then.

- Inadequate water supply
- Increased sewage treatment requirements
- Increased traffic
- Questionable school capacity
- Decreased quality of life
- Increased demands on Philomath infrastructure
- Increased need for city services including fire and police.
- **INCREASED TAXES TO PAY FOR ALL THE ABOVE**

If, as suggested by the developers, these homes are occupied by an average of 2.5 residents each, this development will bring at least 2000 more residents to town, and possibly even more. It's true that Philomath now has a contract with Corvallis that allows it to buy water from Corvallis. However, I believe the contract also allows Corvallis to cut off that water supply at will and without warning. Eventually, Corvallis will be using all of its water rights and will have no water to sell. What will happen then if Philomath is 1 ½ to twice its present size (with the same per capita water demands)?

The developers propose to build these houses over a 10-15 year period. That sounds manageable (66-44 houses per year) until you realize that it really means a continuous construction project over that entire period! Imagine 10-15 years of constant noise, heavy trucks, dust, disruption, and traffic.

This project will ruin the quality of life in Philomath that we value so highly.

VOTE NO!

(This information furnished by
David Stein and Caroline Ajootian, Philomath Residents)

CITY OF PHILOMATH MEASURE 2-102

ARGUMENT AGAINST:

Chapel Drive (Lowther) Annexation

- Voters rejected annexation in 2005 and 2006
- Voters should reject this annexation again due to a poorly prepared conceptual plan that is unchanged since 2005

Developers build homes for one purpose: to maximize profits. They plan for expenses such as system development charges and add such costs to each home. The burden of providing city services will fall upon Philomath taxpayers.

Developers make promises to the public and city officials, then make changes that maximize profit. It is common knowledge that after the Chapel Drive property is annexed, a rezoning request will be made to increase the number of homes. Worst-case scenario, the applicant will sell their interest to another developer who wants a larger profit margin. Broken promises are happening in other Oregon communities.

The developer has submitted only a conceptual plan, based on infrastructure plans made 10-15 years ago. An example of a plan that needs to be updated is the *Traffic Impact Analysis*. Current travel demands on Hwy 20/34 during peak hours are resulting in extreme slowdown periods. If the Chapel Drive property is developed, additional congestion is anticipated for Philomath and surrounding communities. Traffic patterns have changed considerably since the last traffic study was completed in 2005.

The water supply in Philomath is adequate only for the current population without updating treatment facilities, adding storage, or utilizing alternative sources. During the summer, the Marys River can run below required flow requirements, and will further decline during drought. Using alternative water sources will require additional treatment and cost. Relying on Corvallis to supply water places Philomath's needs in others' hands. Water quality and quantity must be addressed before increasing Philomath's population.

Conceptual plans are inadequate to insure that livability in Philomath isn't jeopardized. Vote no on measure 2-102 to tell City representatives that we want to preserve our small-town qualities and not severely impact essential city services.

(This information furnished by Grow Philomath Sensibly)

ARGUMENT AGAINST:

Philomath citizens should vote no on measure 2-102, that would annex the Lowther property on Chapel/Applegate to the city.

This massive proposal is to build 660 homes which will cause great problems with both water and traffic, as well as needed increases in police, fire, and sewer services, and the burden for this will fall on taxpayers, not the developers.

Without annexation, the owners can still develop the land, anytime they want too. But they would have to pay for water development, etc. Annexation shifts those costs to Philomath tax payers.

Philomath is maxed out in terms of water quantity. We use every bit we've got. The city can buy water from Corvallis, but Corvallis put an "opt out clause" in that agreement; and this year they refused to sell water to Consumer Power. In a drought year they are unlikely to part with water, at any price.

According to city officials, Philomath does not have adequate water storage to deal with a catastrophic fire, and the water treatment plant is already at maximum capacity.

In addition, this development would add 1200-1300 cars on the road, and the developers refuse to do a traffic study until AFTER the election. Imagine 1200 more cars on Philomath Blvd. It can take three turns of the light to get through at 53rd right now.

Both the county and Oregon Department of Transportation have voiced concern that the roads are not sufficient for this increase. And it will be the taxpayers of Oregon that pay for road changes, not the developers.

No water, no traffic study, no annexation.

(This information furnished by Mark Weiss)

CITY OF PHILOMATH MEASURE 2-102

ARGUMENT AGAINST:

Philomath's water supply cannot support a sprawling development

We rely on the river. For many years, Philomath got all its water from Corvallis. In the 1970s, facing population growth, Philomath drilled 2 wells, but they had quality problems. Philomath then built a water treatment plant and made the Marys River its primary water source.

We share the river. There are many claims on the river, such as for irrigation. Furthermore, the State of Oregon requires a certain minimum stream flow to maintain aquatic life. When the river's flow drops below that minimum, the state can require Philomath to restrict its water withdrawal.

The river is often too low. River flows under the state minimum occur once every 5 years, on average. This past August, river flow dropped below the minimum for about a week—and for a few of those days, river flow was 30% below the minimum.

Moderate or severe drought would be devastating if Philomath's population skyrockets. According to national statistics, the proposed 660 houses would bring 2046 people—that's 44% greater population and water demand. And that's not counting other new houses and still-undeveloped industrial land.

The water supply is in trouble even if no big development occurs. In 2005, engineers hired by Philomath concluded that the reliable water supply (river water rights plus the 11th Street well) was insufficient for the planning period (2005-2029).

The next year, Philomath went back to buying Corvallis water regularly. That happened even though the 2005 study called Corvallis "a last-resort, emergency supply." It's an unreliable supply, too. Our contract with Corvallis says that if there is drought, contamination, or another problem, the amount of water provided to Philomath will be cut back.

Philomath's 2005 water study is at <http://tinyurl.com/jj48vbf>

The city has ordered a new study that will not be available until after this vote

No on 2-102!

(This information furnished by Faith Reidenbach)

ARGUMENT AGAINST:

CHAPEL DRIVE LLC (Lowther Annexation)

This argument is offered in opposition to Measure #2-102

The addition of 660 homes will put too great a demand on the environment, resources and infrastructure. Most of the physical changes resulting from development are permanent. Economic costs are incurred, many of which are not paid for by the development itself. So, let's practice some due diligence before embarking on any development. Let's grow sensibly.

WATER: The latest Water System Master Plan (2005) states "perhaps the most useful message for the community.....is that water resources in and around Philomath are limited." Another 2,000 people is a 50% population increase. The Water Plan included many recommendations including conservation but as far as I can tell none of them have been instituted. Instead, we rely on Marys River as our main water source backed up by the 11th street well along with an "agreement" with Corvallis. Presently, the "agreement" states that the needs of the Corvallis citizens take priority over Philomath; an opt out clause. A new 5 year contract requesting no opt out clause will be negotiated later this year. The terms and the price are up to Corvallis, not Philomath. **WE NEED A CURRENT WATER MANAGEMENT PLAN PERFORMED BY AN INDEPENDENT ENGINEERING FIRM BEFORE GOWTH CAN BE PLANNED RESPONSIBLY.**

TRANSPORTATION INFRASTRUCTURE: An increase of approximately 1300 cars on our roads is going to have a huge impact on traffic progression into, out of, and around Philomath. The proposed addition of 2 left turn lanes to remedy the traffic issue seems much less than adequate. It will only mean 2 more lanes of backed up traffic. One needs to also consider the added cost of road maintenance due to the added traffic burden. Again, there is not a recent traffic study and ODOT did voice some concern at the Planning Commission meeting. **WE NEED A CURRENT TRAFFIC STUDY FOR RESPONSIBLE PLANNING.**

VOTE NO MEASURE#2-102

(This information furnished by Marion Dark)

CITY OF PHILOMATH MEASURE 2-102

ARGUMENT AGAINST:

WATER STILL IS THE ISSUE

The proposed 159-acre Chapel Drive Annexation of 660 houses (= Lowther Family Annexation proposal that failed in 2005 and 2006) would increase Philomath's population by over twenty-five percent, and negatively impact the long-term reliability of the city's water supply.

.....

Philomath draws water from several sources: the Marys River, two city wells, and Rock Creek (on Marys Peak).

- Philomath relies primarily on several water rights to the **Marys River**. Those rights, however, do not ensure that water will be available when needed. During critical low flow periods, generally in August and September, often there is little water in the river. Furthermore, because of overuse and low flow, the Marys at times has been out of compliance with state standards.
- **Philomath's two wells** have serious problems. The 9th Street well is so poor, that the pump was pulled some years ago and the well no longer was used. The aquifer tapped by the 11th Street well is of such poor quality that water levels decreased in 1983 until quality was unacceptable, and the well virtually ran dry. Currently, however, the city is using both wells.
- In the mid-1990's, Philomath signed an agreement with Corvallis to purchase up to one million gallons of water a day from **Rock Creek**. Unfortunately, the current 10-year contract can be terminated at any time. When that agreement expires at the end of fiscal year 2016-2017, Corvallis will have the option to extend it. However, if Corvallis should need the water currently sold to Philomath, Philomath could be left high and dry.

.....

Increasingly, the West is experiencing water shortages caused by global warming. Reduced snowpack and hot, dry summers are bound to have a negative impact on Philomath's water supply. The City must plan growth wisely, so that current homeowners, other residents, and businesses have adequate water!

We can live with congested traffic, higher taxes, and overcrowded schools, but we cannot live without water!

(This information furnished by May D. Dasch)

CENTRAL SCHOOL DISTRICT 13J MEASURE 27-122

BALLOT TITLE**CAPTION: Bonds for school capital improvements identified in long range plan**

QUESTION: Shall Central School District issue \$26,000,000 general obligation bonds for school repairs, improvements, expansion, replacements, capitalized interest and land purchase? If the bonds are approved, they will be payable from taxes on property or property ownership that are not subject to the limits of sections 11 and 11b, Article XI of the Oregon Constitution.

SUMMARY: Bonds would mature in a period not to exceed 27 years. It is estimated that the Bonds will not increase the property tax rate above the 2016-17 rate. Actual rates may differ based upon interest rates incurred and growth in assessed value.

The District is first on a waiting list to receive up to \$4,000,000 in State grant funds if voters approve this measure. If voters reject the measure, available funds will be diverted to another district.

If approved, the bond and potential grant proceeds are expected to fund improvements, replacement, expansion identified in the District's long range plan, and purchase property as follows:

- New or expanded gyms, remodeled kitchens, cafeterias and multi-purpose rooms at Monmouth and Independence Elementary Schools ("IES").
- Remodel Talmadge Middle School to include gymnasium, locker rooms, and cafeteria and add classrooms.
- Replace IES portables with a classroom wing; add classrooms, air conditioning and parking
- Purchase land for future growth
- Site improvements, demolition, furnishing and equipping of projects, capitalized interest and bond issuance costs.

EXPLANATORY STATEMENT**Background**

In 2007, after years of research, study, data analysis, reporting, staff and community involvement, and Board Leadership, Central School District developed an updated Long Range Facilities Plan. In 2012, the Long Range Facilities plan was reviewed and modified to make changes reflecting the status of existing conditions and to set goals that would lead the District through the next seven years.

CSD's Long Range Plan identified improvements such as the construction of Ash Creek School, adding a classroom wing to Talmadge Middle School (TMS), and remodeling Central High School to allow for growth as well as other essential needs. Additional needs were prioritized, and many items were addressed and completed using General Fund budget and reserves.

Earlier this year, a Bond Exploration Committee was formed to review the 2012 Long Range Plan. In June, the Committee unanimously recommended to proceed with a bond measure. The School Board unanimously approved the recommendation.

Why a Bond?

A Bond provides funding for high priority, major improvements to be completed as outlined in the Long Range Plan. This Bond will focus on upgrades to three buildings to prepare for current and future physical education, food service, and learning space needs, all of which directly contribute to creating an environment for student success. This addresses needs at TMS, Monmouth Elementary (MES) and Independence Elementary (IES).

Some improvements include:

- Increase/update gymnasium space at IES, MES, TMS.
- Increase cafeteria size at TMS, IES.
- Update/enlarge kitchens at IES, MES.
- Build permanent classrooms at IES to replace outdated modular classrooms, which will increase total number of classrooms. Add air conditioning and paved parking.
- Add 4 classrooms to TMS.
- Build covered connections from classrooms to new gymnasiums at MES and IES.
- Implement ADA standards for TMS gym and locker rooms, and MES faculty workroom.
- Purchase land for future growth

Why Now?

State Matching Grant. Oregon Department of Education has announced that "communities that pass general obligation bonds to improve their local school buildings will be eligible to receive matching grants." CSD is 1st on the Priority Waiting List and may receive up to \$4 million.

(Funds are committed to six school districts that have bond measures on the November ballot. Any of those districts failing to pass a bond measure will forfeit their grant and CSD13J will receive funding.)

Sustained Tax Rate. Due to fiscally responsible decisions at CSD13J and changes in the economy, previous bonds were refinanced and another bond will be retiring. This Bond Measure is estimated to result in no increase over the 2016-2017 general obligation bond tax rate, depending on interest rates and assessed property values over time.

Oregon House Bill 3141 requires "K-5 students receive physical education 150 minutes per week and students in grades 6-8 receive 225 minutes." To accommodate this, these schools need additional dedicated spaces for PE.

Bond Exploration Committee?

The Bond Exploration Committee was made up of 18 members including parents, community representatives, school board members, and CSD staff.

(Submitted by Central School District 13J)

**NO ARGUMENTS FOR OR AGAINST
THIS MEASURE WERE FILED**

CORVALLIS SCHOOL DISTRICT 509J MEASURE 2-104

BALLOT TITLE**CAPTION: Renewal of five-year local option levy for K-12 education**

QUESTION: Shall district renew levy of \$1.50 per \$1,000 of assessed value for five years beginning in 2017-2018 for K-12 education? This measure renews current local option taxes.

SUMMARY: This measure would continue the local option levy originally approved by voters in 2006 and renewed in 2010. The current levy expires June 30, 2017. If renewed, the current levy rate would not increase.

The Corvallis School District will use the revenue from this measure to fund teachers at all schools to sustain class sizes; instructional coaches to improve teaching and learning; music, physical education and art instruction for elementary students; vocational and technical education opportunities; counseling for students; and support for high school athletics and activities.

The proposed levy will raise approximately \$4.3 million in 2017-2018, \$4.4 million in 2018-2019, \$4.5 million in 2019-2020, \$4.6 million in 2020-2021, and \$4.7 million in 2021-2022 for a total of \$22.5 million. This amount would support the equivalent of about 50 full-time teaching positions annually.

EXPLANATORY STATEMENT

Under Oregon's property tax law, a local option levy gives individual communities the ability to supplement state funding for their local schools. The Corvallis School District local option levy was first approved by voters in 2006 and then renewed in 2010. The local option levy currently provides approximately 6.5 percent of the district's operating budget, equivalent to about 15% of the district's teaching staff. The current levy expires in 2017. This measure would renew the local option levy at the same rate for another five years, through 2022. Current tax rates will not increase as a result of this measure.

How would the levy funds be spent?

Renewal of the local option levy would provide funds to sustain class sizes and programs. Specifically, funds would be used to support:

- Art education for all elementary students
- Counseling for students
- Classroom teachers at all schools in order to sustain class sizes
- Instructional coaches to improve teaching and learning
- Music instruction and physical education for all students in grades K-6
- Vocational and technical education opportunities for high school students
- High school athletics and activities

Is this measure within the limits established by Ballot Measure 5?

Yes, and all taxes collected will remain in the Corvallis School District. The local option levy rate is calculated individually for each piece of property so that the total rate paid for education stays within the Measure 5 limits.

How much would this cost?

This measure would continue the existing local option levy rate (which cannot exceed \$1.50 per \$1,000 of assessed value) for another five years, starting in 2017 and ending in 2022. It is not a new or additional tax.

What if the local option measure doesn't pass?

If the measure fails, the school board could decide to submit another levy renewal proposal to voters in the spring of 2017 while preparing a plan to significantly reduce operations. If the levy is not renewed before the current levy expires on June 30, 2017, the district would have to reduce its annual budget by approximately \$4.3 million, or 6.5 percent, beginning in the 2017-18 school year. The current local option levy funds about 50 full-time teaching positions annually.

(Submitted by Corvallis School District 509J)

NO ARGUMENTS AGAINST THIS MEASURE WERE FILED

CORVALLIS SCHOOL DISTRICT 509J MEASURE 2-104

ARGUMENT FOR:

Corvallis Teachers Support Measure 02-104

Local option levy funding directly impacts student learning in classrooms and through educational programs.

Thanks to the Local Option Levy, the Corvallis School District is able to invest in key initiatives that support student success and help us boast one of the highest graduation rates in the state. This measure is for a renewal of the levy, so no new taxes will be collected.

The Corvallis levy supports:

- More teachers in core subject areas (science, math and humanities) at the middle and high schools to help keep class sizes smaller
- Additional staff in elementary schools to support reading and writing instruction
- Music, Art and PE instruction for children in grades K-6, fostering creativity and innovation district wide
- More student participation in athletics and other school activities, which are proven to keep kids engaged in school
- Expansion of vocational, career and technical training programs for high school students, helping ensure our kids leave school ready for college, a technical degree or a career

Renewal of the levy provides the financial stability to help sustain and strengthen current programs.

In the 2016-2017 district budget, local option levy funds support about 50 teaching positions, representing nearly 6.5% percent of the total operating budget.

Renewal of the local option levy is an investment in the future of our community.

To become responsible, contributing citizens, Corvallis students need strong programs in academics, the arts, career and technical education and athletics and activities.

Please join us in voting yes on Measure 02-104 to renew the levy.

Your "yes" vote will continue the current levy, but will not raise taxes. Voting to renew the local option levy for the Corvallis School District will demonstrate our commitment to the next generation, just as our parents and grandparents made every effort to provide us with a good education.

(This information furnished by Corvallis Education Association)

ARGUMENT FOR:

Corvallis Local Option Levy Keeps Kids Engaged
Vote YES on 02-104

Our kids go to school expecting to tackle academics. However, we know success in school is about more than reading, writing and mathematics. Involvement in art, athletics, activities and career and technical education boosts graduation rates and improves the chance of success in adulthood. The Corvallis Local Option Levy ensures Corvallis students have these opportunities from kindergarten through graduation.

Kids need to create and move.

While schools across the state struggle to provide access to music, art and PE, Corvallis Schools have prioritized these programs. Since 2006, the local option levy has ensured every elementary school student in Corvallis has weekly PE and music classes. Your YES vote will continue this commitment and expand access to art instruction.

Students need to grow their skills and prepare for the workforce.

The Corvallis Local Option Levy has protected and expanded a robust career and technical education program. The levy allows students to access courses in woods, metals, and auto repair --- opportunities we know increase graduation rates and prepare students for a secure economic future.

Students need to be engaged in community.

Our Local Option Levy makes it possible for Corvallis students to contribute through athletics, activities and the arts. The generosity of Corvallis taxpayers helped build an extraordinary theater program, award winning music programs, and inclusive sports teams that ensure every student can find a place to fit in.

Renewing the Levy Will Not Raise Taxes.

Tax rates will not go up if you vote YES on Measure 02-104. However, your YES vote will ensure Corvallis students continue to access a comprehensive education.

Please vote YES on Measure 02-104.

Dana Monroe, Art Educator
Claudia Hall, Art Educator
Cynthia Spencer, Artist
Patrick Hadlock

(This information furnished by Corvallis Kids Count)

CORVALLIS SCHOOL DISTRICT 509J MEASURE 2-104

ARGUMENT FOR:**Corvallis Kids Count Supports Measure 02-104**

10 years ago, voters in the Corvallis School District generously passed a local option levy to support our schools and our children. Since that time, levy dollars have protected class size in core subjects, added weekly music and physical education for elementary school students, provided additional resources to strengthen reading and writing skills, enhanced vocational and technical education programs at the high schools, and helped support high school athletics and activities. In addition, the levy renewal will add weekly art instruction for elementary students.

The equivalent of 50 full-time teaching positions are currently funded by this levy.

The school district has kept its promise to the voters.

All the money from the levy has been allocated exactly as the district said it would be since the levy was first passed in 2006. These funds have been crucial for the education of our children, and the success is demonstrated with one of the highest graduation rates in the state.

A "YES" vote for Measure 02-104 will renew the levy for an additional 5 years. THE MEASURE WILL NOT RAISE TAX RATES--it will extend the existing levy through the 2022 school year.

Passage of the levy will help provide vitally important financial stability to the district.

With the promise of continued uncertainty in the state budget in coming years, the levy will help ensure that our children's education remains a priority.

We believe that our local schools are the foundation of our community, today and in the future.

Measure 02-104 is great for teachers, for parents, for businesses, and for the health of the community we all love. We urge a YES vote on Measure 02-104. We believe, more than ever, that Corvallis Kids Count.

(This information furnished by Corvallis Kids Count)

MONROE SCHOOL DISTRICT 1J MEASURE 2-101

BALLOT TITLE

CAPTION: Bonds for repairs, renovations, security, energy and water upgrades

QUESTION: Shall Monroe School District construct and improve schools by issuing \$6,000,000 in bonds; potentially receive \$4,000,000 in State grants? If the bonds are approved, they will be payable from taxes on property or property ownership that are not subject to the limits of sections 11 and 11b, Article XI of the Oregon Constitution.

SUMMARY: The District is third on the waiting list for \$4,000,000 in State matching funds if voters approve this measure. If voters reject the measure, these funds will be diverted to another district.

If approved, the bond and grant proceeds are expected to fund:

- Roofing repair and replacement
- Upgrades to all water systems
- Additional classroom space
- Upgrades to all electrical systems
- American with Disabilities Compliance
- Security upgrades
- Upgrades to fire and sprinkler systems
- Replace high school bleachers
- Update all URM's (Unreinforced Masonry) at Monroe High School
- Update HVAC/Boiler at Monroe Grade School
- Site improvements, furnishing and equipping of projects and bond issuance costs.

Bonds would mature in a period not to exceed 21 years. The estimated tax rate is approximately \$1.32 per \$1,000 of assessed property value above next year's levels. Actual rates may differ based upon interest rates incurred and growth in assessed value.

EXPLANATORY STATEMENT

The Monroe School District 1J is placing a bond on the November 8, 2016 ballot for \$6,000,000.00. The district is currently third on the wait list for \$4,000,000.00 in additional funds from the Oregon Department of education if the bond is approved.

The Monroe School District 1J has two buildings; a kindergarten through eighth grade building and a high school housing ninth through twelfth grade. The weighted average daily membership for the district is projected at 639 students.

The original high school was built in the 1920's with several additions to follow. The original grade school was built in the 1950's with several additions to follow. The latest addition to the district facilities was in the 1980's with the construction of a high school gymnasium and cafeteria. That bond was paid off in 2005 and the district has not incurred any debt since that time.

This \$6,000,000.00 bond would be used to build additional classrooms at Monroe Grade School, provide seismic upgrades to all facilities, replace electrical and water systems in all facilities, improve security, replace and upgrade roofs, bring facilities up to ADA compliance, add new bleachers to the high school gymnasium, replace the boiler and HVAC system at the grade school and upgrade all sprinkler and fire protection systems, site improvements, furnishing and equipping of projects and bond issuance costs.

(Submitted by Monroe School District 1J)

NO ARGUMENTS FOR OR AGAINST THIS MEASURE WERE FILED

NORTH ALBANY RFPD MEASURE 2-103

BALLOT TITLE

CAPTION: Measure proposing a five-year operating local option tax levy

QUESTION: Shall North Albany Rural Fire Protection District impose \$.80 per \$1,000 of assessed value for five years beginning in 2017-2018? This measure renews current local option taxes.

SUMMARY: The North Albany Rural Fire Protection District is facing the end of its current operating levy on June 30, 2017. Therefore, it is necessary to renew a five-year operating local option tax levy at the rate of \$.80 per \$1,000 of assessed value for \$141,219 to finance the operations of the District beginning in 2017-2018, \$143,337 for 2018-2019, \$145,487 for 2019-2020, \$147,669 for 2020-2021 and \$149,884 for 2021-2022. The measure will renew a temporary operating tax to help finance the operations of the North Albany Rural Fire Protection District. The operating tax rate will be in addition to the permanent rate limit of \$1.4071 of assessed value. The estimated tax cost for this measure is an estimate only based on the best information available from the county assessor at the time of the estimate.

EXPLANATORY STATEMENT

This measure will renew a temporary operating tax to continue to finance the operations of the North Albany Rural Fire Protection District. If this measure passes, the District will impose a tax of .80 per \$1,000 of assessed value within the District for the next five years beginning in 2017-2018. This maintains the existing levy rate. The operating tax will be in addition to the permanent rate limit of \$1.4071 per \$1,000 of assessed value.

(Submitted by Board Members: Rich Burrig, Carole Gougeon, Burke Hales, Mike McLain, Hasso Hering)

NO ARGUMENTS FOR OR AGAINST
THIS MEASURE WERE FILED

BROWNLY-MARSHALL ROAD DISTRICT MEASURE 2-105

BALLOT TITLE

CAPTION: Four year local option tax for operations

QUESTION: Shall the district impose \$0.20 per \$1000 of assessed value tax for general operations for four years beginning 2017-2018?

SUMMARY: Passage of this local option tax will allow the Brownly-Marshall Road District to continue to provide road maintenance and repair at approximately the same level of service as previous years.

The district currently has a permanent tax rate limit of \$0.93 per \$1000 of assessed value. This new proposed local option tax is in addition to the existing permanent tax rate limit. At the proposed rate of \$0.20 per \$1000 of assessed value a home with an assessed value of \$300,000 would pay a maximum additional \$60 per year as a result of this tax.

The requested rate will raise approximately \$1,691 in 2017-2018, \$1741 in 2018-2019, \$1794 in 2019-2020, and \$1847 in 2020-2021, for a total of \$7073.

EXPLANATORY STATEMENT

Over the past two fiscal years the costs of repair and maintenance of roads in the Brownly-Marshall Road District has risen faster than tax receipts from the existing permanent tax rate limit. This cost increase is primarily the result of a dramatic increase in the cost of dust control.

Funds from this operating tax will be used for repair and maintenance of district roads with the intent of providing a similar level of service as has been provided in previous years. Without the operating levy, service levels may need to be reduced.

If approved, the measure would authorize the district to tax properties at \$0.20 per \$1,000 of assessed value annually in addition to the existing \$0.93 per \$1,000 permanent rate tax limit. However, the district need not levy the full amount in any given year. The district governing body will determine the amount to levy each year after taking into account the approved budget.

(Submitted by Brownly-Marshall Road District)

NO ARGUMENTS FOR OR AGAINST
THIS MEASURE WERE FILED

Registering to Vote

To vote in Oregon you need to be registered in the county where you reside.

You can register if you can answer yes to these three questions:

- Are you a resident of Oregon?
- Are you a US citizen?
- Are you at least 17 years of age?

If you are 17 years of age, you will not receive a ballot until an election occurs on or after your 18th birthday.

How to register

You can register to vote online at www.oregonvotes.gov or you can get a voter registration card at any of the following places:

- Benton County Elections Office
- any county elections office
- the Secretary of State's Office
- some state agencies such as the Division of Motor Vehicles (DMV)
- a voter registration drive

You can fill the card out in person or send it in by US mail. You can also print out a registration card online at: www.oregonvotes.gov.

What information is required to register?

To complete your registration you will provide your:

- full legal name
- home address
- date of birth
- signature
- valid identification

Updating your voter registration

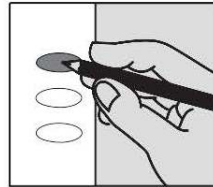
Once you have registered, you are responsible for keeping your information up to date. You can do this online at www.oregonvotes.gov or by completing and returning a voter registration card with the new information. You should update your registration if you do any of the following:

- change your home address
- change your mailing address
- change your name
- change your signature
- want to change or select a political party
- will be away from home on election day

How to Cast Your Ballot

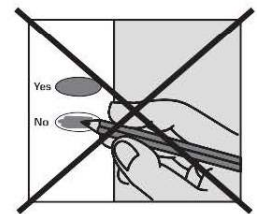
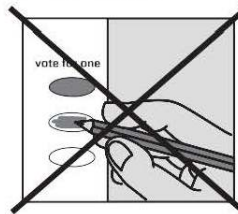
check your ballot!

Use a black or blue pen to fill in the ovals next to your choices.



If you vote for more candidates than allowed, or if you vote **both Yes and No** on a measure, it is called an overvote.

Your vote will not count for that candidate or measure.



You do not have to vote on all contests. Those you do vote on will still count.

Contact Benton County Elections to request a replacement ballot if:

- you make a mistake
- your ballot is damaged or spoiled
- you lose your ballot

Benton County Elections

Phone: (541) 766-6756

Fax: (541) 766-6757

TTY: (541) 766-6080

Email: elections@co.benton.or.us

1 866 ORE VOTE/673 8683

Se Habla Español

www.oregonvotes.gov

THIS CONCLUDES THE BENTON COUNTY
PORTION OF THE VOTERS' PAMPHLET