



OFFICIAL VOTERS' PAMPHLET

**SPECIAL ELECTION
NOVEMBER 7, 2017**

The publication and distribution of this pamphlet is provided by the County Clerk. The measure information within was provided by districts and other interested parties that chose to participate in this portion of the election process.

Benton County:

At Your Service

Every Day



BOARD OF COMMISSIONERS

205 NW Fifth Street
P.O. Box 3020
Corvallis, OR 97339-3020
(541) 766-6800
FAX (541) 766-6893

Dear Benton County Voter:

On November 7, 2017, a Special Election will be held in Benton County. As a registered voter, you have the opportunity to exercise your right to vote on the renewal of a county-wide health and safety measure. If you are a voter within the Palestine Rural Fire Protection District you will also have a measure to review and vote on. Additionally voters within the proposed Asbahr-Pilkington Road District will have the opportunity to create the district, establish a maximum tax rate and elect the district board members for the proposed district.

The Benton County Clerk publishes the **Benton County Voters' Pamphlet** to provide measure proponents and opponents the opportunity to submit arguments for or against local measures. An electronic version of this pamphlet is available at the Clerk's website www.co.benton.or.us/elections.

Please note, **all ballots must be received at an official ballot drop site in Oregon before 8:00 PM on Election Day, Tuesday, November 7, 2017.** You can mail your ballot, or drop it at one of the official ballot drop box locations listed in this pamphlet and on our website. If you need additional information or assistance, you may reach the Elections Office by phone: (541) 766-6756; email: elections@co.benton.or.us; or in-person in the basement of the historic Benton County Courthouse, 120 NW 4th Street, Room 13, in Corvallis.

We hope this information will help you become better informed about the issues you are presented with in this election.

Sincerely,

Anne Schuster,
Chair

Xanthippe Augerot,
Commissioner

Annabelle Jaramillo,
Commissioner

Exercise Your Right to VOTE.

Benton County:
At Your Service
Every Day

TABLE OF CONTENTS

2	Letter from the Commissioners
Benton County	
4	Measure 2-110 Renew Levy for Public Safety and Health Services
5	Measure 2-110 Arguments in Favor
6	Measure 2-110 Arguments in Favor
7	Measure 2-110 Arguments in Favor
8	Measure 2-110 Argument in Favor
Palestine Rural Fire Protection District	
9	Measure 2-111 Renewing Five-Year Operating Local Option Tax Levy
Proposed Asbahr-Pilkington Special Road District	
10	Measure 2-109 Establish Asbahr-Pilkington Special Road District
11	Measure 2-109 Argument in Favor
12	Registering to Vote and How to Cast Your Ballot
13	Oregon Voter Registration Form
14	Important Information
15	Benton County Official Ballot Dropsites

Information provided in statements or arguments submitted by a candidate, a political party, an assembly of electors or a person supporting or opposing a measure have not been verified for accuracy or truth and do not constitute an endorsement by Benton County.

Benton County Elections & Passports Office

Phone: 541-766-6756

Fax: 541-766-6757

Website: www.co.benton.or.us/electionsE-mail: elections@co.benton.or.us

Benton County Measure 2-110

Ballot Title

Caption: Renew Levy for Public Safety and Health Services

Question: To continue health and safety services, shall Benton County impose a five-year \$.90 per \$1,000 assessed valuation beginning 2018?

This measure renews current local option taxes.

Summary: Renewal of the current levy would continue:

- Rental of 40 jail beds.
- Rehabilitative programming, examples of which may include:
 - Parenting skills
 - Substance abuse treatment
 - Mental health
 - Anger management
 - Cognitive skills
 - Job skills

Renewal would also fund health and safety services which may include:

- Sheriff's deputies 24-7 patrol operations;
- Sheriff's school resource program duties;
- Substance abuse treatment programs for juveniles and adults;
- Juvenile counseling and outreach;
- Juvenile detention capacity;
- Street crimes unit, targeting crimes affecting community livability;
- Child abuse and criminal prosecutions;
- Community health assessment and health improvement planning;
- Prevention of infectious disease outbreaks; or
- Early intervention services for child/youth physical/mental health services.

Renewal of the levy at \$.90 per \$1,000 assessed value would continue the tax at a cost of \$7.50 per month or \$90 per year for every \$100,000 of a property's assessed value.

At the maximum rate this levy is estimated to impose taxes of \$7,692,000 in 2018, \$7,930,500 in 2019, \$8,208,000 in 2020, \$8,495,300 in 2021, and \$8,792,700 in 2022.

Explanatory Statement

The purpose of this levy renewal is twofold. First, it would continue funding the rental of 40 beds for Benton County inmates in other county jails. Second, it would continue funding for public safety and health services because of the expiration of guaranteed federal forest payments.

This levy would continue the same maximum tax rate of \$.90 per \$1,000 assessed value (AV) as the previous levy.

Renewal of Jail Space Rental and Corrections Levy

This levy would continue to fund rental of 40 jail beds for Benton County inmates and related services, which may include:

- Inmate placement and transportation;
- A transition program for local and State inmates who complete their sentences and need assistance to effectively reintegrate back into the community; and,
- Crisis Intervention Program which allows Sheriff's Deputies and mental health workers to collectively respond to calls of service involving mental health situations.

Maintain Public Safety and Health Services

This levy would continue health and safety services that were supported by the previous levy including:

- **Public Safety Services:** 24-hour sheriff's patrol and investigation; substance abuse treatment programs for juveniles and adults; street crimes unit addressing crimes impacting livability issues; forensic investigation and child abuse cases; counseling and outreach for juvenile offenders; juvenile detention services; the school resource deputy program which supports student substance abuse prevention; and collaborative Crisis Intervention Teams addressing cases of severe mental health crisis presenting risk of criminal activity.
- **Health Services:** Communicable disease outbreak prevention and investigation; high-risk maternal/child healthcare nursing; community health assessment and health improvement planning; and county-wide, school-based mental health services that provide prevention and early intervention to children/youth at risk of mental health problems, depression, suicide, delinquency, and school failure.

Levy Cost

At \$.90 per \$1,000, the tax would cost \$7.50 per month or \$90 per year for every \$100,000 of a property's assessed value.

The levy would be for five years beginning in 2018.

(Submitted by the Benton County Board of Commissioners)

No Arguments Against
This Measure Were Filed

Benton County Measure 2-110 Argument For:

Measure 2-110 will directly impact the quality of your life in Benton County.

In 2012, you passed a similar measure thereby agreeing to pay a tax of less than 1/10th of 1 percent assessed value of your real property to help support the health, safety and welfare of your families, friends and neighbors.

All of us should be proud of the thousands of people that were helped, of the property that was protected, and of the lives that were saved by this modest investment in the betterment of our community.

A YES vote on Measure 2-110 will continue this critical investment in the livability of our community.

As Circuit Court judges, we see the direct benefits of this investment every day and we fear the potential devastating impact that a loss of this funding will have on public health and safety.

A Yes vote on Measure 2-110 will help assure Benton County's ability to:

- maintain its current level of law enforcement patrols
- effectively prosecute criminal conduct
- maintain minimally adequate jail space to house dangerous criminals
- provide drug and alcohol treatment to criminal offenders
- properly monitor convicted criminals in our community

In addition, these funds are vital to the County's ability to meet the needs of children by:

- funding necessary early intervention programs
- placing resource officers in our schools
- provide drug and alcohol prevention and treatment services
- maintain adequate bed space in the juvenile detention facility
- funding juvenile counselor positions to work with our at risk youth

We urge you to show your continued support for the protection of the health, safety and welfare of all who live and work in Benton County by voting YES on Measure 2-110. It is up to you to continue funding essential public safety services.

(This information furnished by Honorable David B. Connell, Honorable Locke A. Williams, Honorable Matthew J. Donohue)

Benton County Measure 2-110 Argument For:

KEEP BENTON COUNTY SAFE AND HEALTHY
VOTE YES ON MEASURE 2-110

Without the levy, vital services will be ELIMINATED or CUT:

- 24/7 Sheriff's Patrol
- Child Abuse Protection
- 40 Jail Beds
- Children's Health Services

Support Our Community. Protect Vital Services.
Prevent Harmful Cuts. Renew the levy.

VOTE YES ON MEASURE 2-110

- With your YES vote, we can fund adequate medical services to help prevent infectious disease outbreaks, and provide children's health services.
- With your YES vote, convicted criminals can be kept off our streets, because we'll be able to continue renting jail beds in other counties.
- With your YES vote, the district attorney's office will be able to continue prosecuting provable criminal cases.
- With your YES vote, we'll be able to maintain deputy patrols 24/7 for crime prevention and fastest emergency response.

Put your vote where your heart is. Keep Benton County a safe and healthy place to live.

VOTE YES ON MEASURE 2-110

Lauana Beaty Kevin Ewanchyna Kevin A. Grant
Robert Heald Charles F. Maughan David Peterson
Diana Simpson-Godfrey Cliff Trow Curtis Wright

(This information furnished by Citizens for a Safe & Healthy Benton County)

Benton County Measure 2-110 Argument For:

As present and past Sheriffs and District Attorney, we are uniting together in this joint statement to explain the serious damage that will occur with our local criminal justice system if Measure 2-110 is not passed.

Voters have supported public safety through a local option levy which restored critical funding for the Sheriff's Office and District Attorney's Office. This allowed the Sheriff's Office to restore 24/7 patrol coverage as well as the District Attorney to prosecute critical cases.

The situation is serious once again.

SHERIFF'S OFFICE

Without the renewal of the levy, the Sheriff's Office will lose the following services:
24/7 county wide patrol coverage.

Approximately one third of deputies providing the coverage as well as conducting investigations.

School Resource Deputy program resulting in increased vandalism.

40 jail beds rented in other counties resulting in a 50% reduction in available jail beds.

Transition Center to assist homeless and mentally ill offenders with housing and other critical needs.

Deputies in the Jail and Parole & Probation.

DISTRICT ATTORNEY'S OFFICE

Without the renewal of the levy, the District Attorney's Office will lose the following services:

Loss of 2 deputy DA's and 1 paralegal. Each deputy DA handles 500+ cases a year, one of the highest caseloads in the state.

25% reduction in criminal prosecution services (currently average more than 13,000 scheduled court appearances, and more than 32,000 services to victims per year).

25% reduction in the number of cases prosecuted due to lack of deputy DA's necessary to appear in court.

Loss of proactive response to drug-related crime in our community.

Renewing this county levy is essential to maintain current services.

We urge a YES vote on Measure #2-110 on November 7, 2017.

Sheriff Scott Jackson and District Attorney John Haroldson

Retired Sheriff Diana Simpson, Retired Sheriff Jim Swinyard.

(This information furnished by Sheriff Scott Jackson and District Attorney John Haroldson)

Benton County Measure 2-110 Argument For:

VOTE YES ON 2-110!

Vote to keep Benton County the healthy, safe and welcoming place we cherish. This measure is a **flat-rate renewal** of the 2012 health and safety levy, at \$0.90/\$1,000 of assessed property value.

The 2012 levy will expire next June, halfway through our 2017-19 biennial budget. Maintaining county safety and health services is contingent upon renewal, which will raise an average of \$8.2 million/year over the next five years. These funds are vital, given the expiration of guaranteed federal forest payments.

VOTE YES ON 2-110!

The following valuable services will be maintained over the next five years by voting to support the County local option levy:

- 24-hour sheriff's patrol throughout Benton County
- Supplemental jail bed rentals, plus associated transportation and communication expenses
- Deputies to staff the Benton County jail
- Support for deputies and mental health workers to collectively respond to service calls involving mental health situations, through crisis intervention programming
- Transition support and assistance programs to effectively reintegrate returning inmates into the community
- Criminal prosecution
- Counselors to work with juvenile offenders and their families
- School resource deputies and juvenile department outreach
- Detention capacity for juveniles who must be detained, for their safety and ours
- Prevention of infectious disease outbreaks
- Home health nurses supporting maternal and child health
- Mental health counselors in all county schools

We urge you to **vote YES on Measure 2-110**, so that we may continue providing responsive and proactive services to keep our communities health and safe across Benton County.

Only you can decide to keep Benton County the kind of place where it is healthy and safe to live.

(This information furnished by Benton County Commissioners Anne Schuster, Annabelle Jaramillo and Xan Augerot)

Benton County Measure 2-110 Argument For:

Join us in supporting Ballot Measure 2-110

Vote yes to renew the Local Option Property tax levy at the current rate of \$0.90 per \$1,000 of assessed value. At current property values, the levy will provide an average of \$8.2 million/year renewal!

The Local Operating Levy is vital to the continuation of important county services!

- 24-hour sheriff's patrol throughout Benton County
- Supplemental jail bed rentals and associated transportation and other costs
- Deputies to staff the jail
- Criminal prosecution
- Support for transition programs to return inmates to the community
- Counselors to work with juvenile offenders and their families
- Home nursing visits related to high-risk maternal and child health
- Mental Health Counselors in county schools

These programs help keep Benton County safe and healthy!

Vote Yes for Public Safety and Health Services!

Vote Yes on Measure 2-110

**Senator Sara Gelser
Representative Dan Rayfield
Representative Andy Olson
Biff Traber, Mayor of Corvallis
Rocky Sloan, Mayor of Philomath
Sharon Konopa, Mayor of Albany
Paul Canter, Mayor of Monroe**

(This information furnished by Citizens for a Safe and Healthy Benton County)

Benton County Measure 2-110 Argument For:

**Support Critical Health and Public Safety Services
VOTE YES on Measure 2-110**

Ten years ago the quality of life in Benton County was in jeopardy. Our sheriff's office was understaffed, unable to effectively patrol our county roads. The school resource deputy program working to reduce youth substance abuse was gone. Our district attorney's office ranked last in the state. Hundreds of criminal cases were not prosecuted. Our county health department budget was cut \$700,000 affecting programs such as early intervention for children at risk of abuse or substance dependency.

The situation was bad, but enough caring voters voted for a five-year local option levy and avoided those losses of critical services.

In 2012 voters again stepped up and renewed the levy so we could continue to receive these and other vital law enforcement and healthcare services.

Now it's now 2017. We the citizens of Benton County need to again step forward and support the local option levy, in order to protect vital services we all depend on. Please vote YES ON 2-110.

Without our YES vote, convicted criminals will have to be released.

Without our YES vote, hundreds of criminal cases will not be prosecuted.

Without our YES vote, 24/7 crime prevention and fast emergency response will be curtailed.

Without our YES vote, services to help prevent infectious disease outbreaks, provide mental health, addiction, and children's health services will be cut back.

Don't let this happen to the place we call home. Put your vote where your heart is. Keep Benton County safe and healthy. VOTE YES on 2-110.

Benton County Democratic Party

Stephanie W. Hampton
Rick Osborn
Lauana Beaty
Don de Carbonel
Ann Gaidos-Morgan

(This information furnished by Democratic Party of Benton County)

Benton County Measure 2-110 Argument For:

Five years ago, Benton County voters were clear, Public Safety is a Priority. It's time again to *Renew* this commitment to the safety of the community we all share.

In 2007, the Benton County Sheriff's Office operated at less than full capacity. Patrol services were only staffed 20 hours each day. Jail capacity was in danger of being reduced by half. The District Attorney's Office was down over 25% and not prosecuting hundreds of cases due to staffing reasons and the community said we need Public Safety to be a Priority.

Since then, the Benton County Sheriff's Office and District Attorney's Office have slowly rebuilt and are now fully staffed. This effort took time. Hiring and training deputy sheriffs and deputy district attorneys was a time and resource consuming expense. Now we face the prospect of all this effort being for nothing. We need to keep Public Safety a Priority.

Measure #2-110 does this. By renewing this levy it will continue services we currently have. By *Renewing* this levy, we maintain:

40 jail beds at NORCOR to augment our severely undersized jail.

7 patrol deputies providing 24/7 patrol services and school resource program.

7 jail and parole and probation deputies supporting the jail and transition center.

2 deputy district attorneys and the paralegal support staff.

1 mental health professional supporting the local schools.

A part time nurse dedicated to fighting infectious diseases.

Juvenile counseling and outreach professional

We have been without these services before, many in our recent history. We have made the efforts, invested the time and money, and brought our community back where it is today. These are not projects, buildings, land, or equipment. These are the men and women dedicated to keeping Benton County a safe and healthy community to live in. These people need your support in voting ***YES on measure #2-110*** and keeping Public Safety a Priority in Benton County.

(This information furnished by Benton County Deputy Sheriff's Association, Executive Board)

Palestine Rural Fire Protection District Measure 2-111

Ballot Title

Caption: Measure Proposing Renewing Five-Year Operating Local Option Tax Levy

Question: Shall District impose \$.9707 per \$1,000 of assessed value for five years beginning in 2018-2019 for fire protection? This measure renews current local option taxes.

Summary: Palestine-Rural Fire Protection District's financial resources have been depleting in the last few years due to an increase in the cost of fire protection service. Therefore, it is necessary to request a renewal and increase of the five-year operating local option tax levy to \$.9707 per \$1,000 of assessed value to finance the operations of the District beginning in tax year 2018-2019. The estimated tax raised by year would be \$89,868 for 2018-19, \$93,463 for 2019-20, \$97,202 for 2020-21, \$101,090 for 2021-22, \$105,113 for 2022-23 for a total of \$486,756 over 5 years. The estimated tax cost for this measure is an estimate only based on the best information available from the county assessor at the time of the estimate.

Explanatory Statement

This measure will renew the existing temporary operating tax to help finance the operating of Palestine Rural Fire Protection District. If this measure passes, the District will impose a tax of \$.9707 per \$1,000 of assessed value within the District for the next five years beginning in 2018-2019. The measure will increase the temporary operating tax from \$.9007 to \$.9707. The operating tax rate will be in addition to the permanent rate limit of \$1.2493 per \$1,000 of assessed value.

Board Members:

Roger Biegel
J. David Adams
Wayne Henneck
Nicholas F. Fowler

(Submitted by Palestine Rural Fire Protection District)

No Arguments For or Against
This Measure Were Filed

Proposed Asbahr-Pilkington Special Road District Measure 2-109

Ballot Title

Caption: Establish Asbahr-Pilkington Special Road District

Question: Shall District be formed to provide road maintenance with maximum tax rate of \$3.00 per \$1,000 assessed value?

Summary: If approved, the Asbahr-Pilkington Special Road District would provide road maintenance, repair and upgrading of the roads within the proposed district. The proposed district is bounded by properties abutting Asbahr Avenue, Pilkington Avenue, Hwy. 20 and the Stewart Slough and is located between Trillium Family Services and Waldorf School. Asbahr Estates, which is within the proposed district, includes approximately 85 residential and agricultural properties. Approximately 250 registered voters live within the proposed district.

The proposed District would be governed by a three-person elected Board of Directors. The District would be governed by the provision of state law set forth in ORS 371.305 – 371.385. The Board may adopt bylaws, or form advisory committees.

The District would implement a maximum tax rate of \$3.00 per \$1,000 assessed value. A home assessed at \$200,000 would pay approximately \$600 per year. If approved, the District could levy any tax rate up to, but no more than, \$3.00 per \$1,000. The District may also choose not to levy a tax rate in any given year.

Explanatory Statement

The purpose of the proposed Asbahr-Pilkington Special Road District is the formation of an entity that would provide road maintenance, repair and upgrading of the roads within the proposed district. The proposed district is bounded by properties abutting Asbahr Avenue, Pilkington Avenue, Hwy. 20 and the Stewart Slough and is located between Trillium Family Services and Waldorf School.

Formation of the proposed district would assure road maintenance within the boundaries of the proposed district. Although the Asbahr Estates subdivision has been developed since the 1950s, no road maintenance agreement was put in place and roads have been maintained by volunteers and donations made by the residents. This process no longer works as some owners are non-residents and some owners don't donate to a maintenance fund. Some of the asphalt roads are approaching a state of disrepair that may be hazardous to vehicle traffic while others may need seal coating to prevent degradation.

If the District is formed, it would be governed by an elected three-member board of directors. The Board may create advisory committees to provide input on finances, repair projects and priorities or for owner purposes.

If the District is formed, it is anticipated that the first road repair project would be the repaving of Asbahr Avenue in approximately 2019. A second project could be to overlay Fair Acres. Other, projects and priorities would be considered by the Board or advisory committees.

The District would have the authority to levy a maximum tax rate of \$3.00 per \$1,000 of assessed value. Such authority would allow the District to levy tax rates ranging from no tax up to the maximum of \$3.00. If the maximum tax rate is levied, a home with an assessed value of \$200,000 would pay approximately \$600 per year in taxes.

(Submitted by Benton County)

No Arguments Against
This Measure Were Filed

**Proposed Asbahr-Pilkington Special
Road District
Measure 2-109
Argument For:**

The proponents of an Asbahr/Pilkington Special Road District have decided that formation of this district is the **only equitable** way to assure road maintenance of the roads within and abutting Asbahr Avenue, Pilkington Avenue, Hwy. 20 and the Stewart Slough, including Fair Acres, Morning, Pin Oak and Holly Acres.

Although the subdivision has been developed since the 1950s, no road maintenance agreement was put in place and roads have been maintained by volunteers and donations by the residents. This process **no longer works** as some owners are non residents and some owners do not donate to a maintenance fund.

The county neither maintains nor plans to maintain the roads in the proposed road district.

The road district development committee has recommended a 5-year plan to repair five(5) roads, at an estimated cost of \$221,000. This is essential to reduce further deterioration and future deep costs. Once this 5-year plan is completed the tax rate could be significantly reduced to provide only for regular maintenance.

The formation of this road district would ensure equitable payment from all residents along with local control and responsibility for the repair and maintenance of the roads. The tax rate is based on the county assessed value of our homes and not the selling price.

A road district would allow us to maintain safety and livability and equitably distribute the cost of doing so.

(This information furnished by Asbahr-Pilkington Road District Formation Committee)

No statements were filed by the candidates for the proposed Asbahr-Pilkington Special Road District Board positions

Registering to Vote

To vote in Oregon you need to be registered in the county where you reside.

You can register if you can answer yes to these three questions:

- Are you a resident of Oregon?
- Are you a US citizen?
- Are you at least 17 years of age?

If you are 17 years of age, you will not receive a ballot until an election occurs on or after your 18th birthday.

How to register

You can register to vote online at www.oregonvotes.gov or you can get a voter registration card at any of the following places:

- Benton County Elections Office
- any county elections office
- the Secretary of State's Office
- some state agencies such as the Division of Motor Vehicles (DMV)
- a voter registration drive

You can fill the card out in person or send it in by US mail. You can also print out a registration card online at: www.oregonvotes.gov.

What information is required to register?

To complete your registration you will provide your:

- full legal name
- home address
- date of birth
- signature
- valid identification

Updating your voter registration

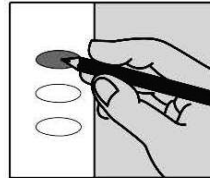
Once you have registered, you are responsible for keeping your information up to date. You can do this online at www.oregonvotes.gov or by completing and returning a voter registration card with the new information. You should update your registration if you do any of the following:

- change your home address
- change your mailing address
- change your name
- change your signature
- want to change or select a political party
- will be away from home on election day

How to Cast Your Ballot

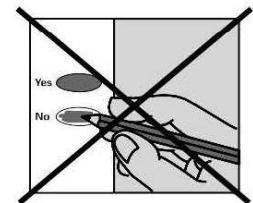
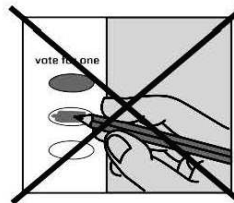
check your ballot!

Use a black or blue pen to fill in the ovals next to your choices.



If you vote for more candidates than allowed, or if you vote **both Yes and No** on a measure, it is called an overvote.

Your vote **will not count** for that candidate or measure.



You do not have to vote on all contests. Those you do vote on will still count.

Contact Benton County Elections to request a replacement ballot if:

- you make a mistake
- your ballot is damaged or spoiled
- you lose your ballot

Benton County Elections

Phone: (541) 766-6756

Fax: (541) 766-6757

TTY: (541) 766-6080

Email: elections@co.benton.or.us

1 866 ORE VOTE/673 8683

Se Habla Español

www.oregonvotes.gov



Use online voter resources to register or update your registration status.
oregonvotes.gov

qualifications

Are you a citizen of the United States of America? yes no

Are you at least 17 years of age? yes no

If you mark no in response to either of these questions, do not complete this form.

personal information *required information

last name* first* middle

Oregon residence address (include apt. or space number)* city* zip code*

date of birth (month/day/year)* county of residence

phone email

mailing address (required if different than residence) city zip code

Oregon Driver's License/ID number

Provide a valid **Oregon Driver's License, Permit or ID:**

I do not have a valid **Oregon Driver's License/Permit/ID**.
 The last 4 digits of my Social Security Number (SSN) are:

x x x - x x -

I do not have a valid Oregon Driver's License/ID or a SSN.
 I have attached a copy of **acceptable identification**.

political party

Not a member of a party

Constitution

Democratic

Independent

Libertarian

Pacific Green

Progressive

Republican

Working Families

Other

signature I swear or affirm that I am qualified to be an elector and I have told the truth on this registration.

sign here date today

! If you sign this card and know it to be false, you can be fined up to \$125,000 and/or jailed for up to 5 years.

registration updates Complete this section if you are updating your information.

previous registration name previous county and state

home address on previous registration date of birth (month/day/year)

Please remember that all ballots
must be received at an
official ballot drop site in Oregon
before 8:00 PM on
Tuesday, November 7, 2017.



BENTON COUNTY OFFICIAL BALLOT DROPSITES

BENTON COUNTY ELECTIONS & PASSPORTS OFFICE

Basement of County Courthouse
120 NW 4th St Rm 13, Corvallis OR 97330
541-766-6756
Mon thru Fri 8:00 am to 5:00 pm
Election Day 7:00 am to 8:00 pm

24-HOUR OUTSIDE DROP BOXES

BENTON COUNTY COURTHOUSE

Courthouse lawn on Fourth Street
120 NW 4th St, Corvallis OR 97330

BENTON COUNTY COURTHOUSE

Accessible entrance on Fifth Street
120 NW 4th St, Corvallis OR 97330

BENTON COUNTY COURTHOUSE

Across the street on Fifth Street
180 NW 5th St, Corvallis OR 97330

WELLS FARGO BANK

Timberhill Shopping Center
2543 NW Kings Blvd, Corvallis OR 97330

BENTON COUNTY SUNSET BUILDING

Drop box in parking lot
4077 SW Research Way, Corvallis OR 97333

LINCOLN HEALTH CENTER

Drop box in parking lot
121 SE Viewmont Ave, Corvallis OR 97333

NORTH ALBANY SHOPPING CENTER

Drop box in front of former Ray's location
621 Hickory Ave NW, Albany OR 97321

MONROE COMMUNITY LIBRARY

Drop box in parking lot
380 N 5th St, Monroe OR 97456

PHILOMATH PUBLIC LIBRARY

Drop box near main entrance
1050 Applegate St, Philomath OR 97370

INSIDE BALLOT DROP BOXES

CORVALLIS PUBLIC LIBRARY

645 NW Monroe Ave, Corvallis OR 97330
541-766-6793
Mon thru Thu 10:00 am to 8:00 pm
Fri thru Sat 10:00 am to 6:00 pm
Sun 1:00 pm to 5:00 pm

OSU VALLEY LIBRARY

121 The Valley Library, Corvallis OR 97331
541-737-3331
Mon thru Thu 7:00 am to 12:00 midnight
Fri 7:00 am to 10:00 pm
Sat 1:00 pm to 10:00 pm
Sun 1:00 pm to 12:00 midnight

SENIOR CITIZENS CENTER OF CORVALLIS

2601 NW Tyler Ave, Corvallis OR 97330
541-766-6959
Mon thru Fri 8:00 am to 4:00 pm
Election Day 8:00 am to 8:00 pm

LBCC BENTON CENTER

757 NW Polk Ave, Corvallis OR 97330
541-757-8944
Mon thru Thu 8:00 am to 10:00 pm
Fri 8:00 am to 4:00 pm

CITY LIMITS MARKET

5800 NW Hwy 99W, Corvallis OR 97330
541-745-7194
Mon thru Thu 6:30 am to 7:30 pm
Fri 6:30 am to 8:00 pm
Sat 8:00 am to 8:00 pm
Sun 8:00 am to 7:00 pm
Election day 6:30 am to 8:00 pm

JOHN BOY'S ALSEA MERCANTILE STORE

186 E Main St, Alsea OR 97324
541-487-4462
Mon thru Sat 6:00 am to 8:00 pm
Sun 7:00 am to 8:00 pm

Benton County Elections
120 NW 4th St Rm 13
Corvallis, OR 97330

NONPROFIT
CAR-RT SORT
U.S. Postage
PAID
Portland, OR
Permit No. 692



RESIDENTIAL CUSTOMER

OFFICIAL BENTON COUNTY
VOTERS' PAMPHLET
NOVEMBER 7, 2017 SPECIAL ELECTION

