



OFFICIAL VOTERS' PAMPHLET

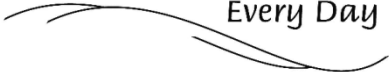
**SPECIAL ELECTION
MAY 21, 2019**

The publication and distribution of this pamphlet is coordinated by the County Clerk. The candidate and measure information within was provided by candidates, cities, districts and other interested parties that chose to participate in this portion of the election process.

Benton County:

At Your Service

Every Day





BOARD OF COMMISSIONERS

205 NW Fifth Street
P.O. Box 3020
Corvallis, OR 97339-3020
(541) 766-6800
FAX (541) 766-6893

Dear Benton County Voter:

On May 21, 2019, a Special District Election will be held in Benton County. As a registered voter, you have the opportunity to exercise your right to vote on local district board positions. Additionally, City of Corvallis and Country Estates Road District voters have measures to consider.

The Benton County Clerk publishes the **Benton County Voters' Pamphlet** to provide candidates the opportunity to share their messages and views with voters. Candidate Statements are an optional filing, and not all candidates choose to file a statement. Additionally, measure proponents and opponents have the opportunity to submit arguments for or against local measures. This pamphlet includes the complete text for each local measure. An electronic version of this pamphlet is available at the Clerk's website www.co.benton.or.us/elections.

Please remember that **all ballots must be received at an official ballot drop site in Oregon before 8:00 PM on Tuesday, May 21, 2019**. You can mail your ballot, or drop it at one of the official ballot drop box locations listed in this pamphlet and on our website. If you need additional information or assistance, you may reach the Elections Office by phone: (541) 766-6756; email: elections@co.benton.or.us; or in-person in the basement of the historic Benton County Courthouse, 120 NW 4th Street, Room 13, in Corvallis.

We hope this information will help you become better informed about the candidate and measure choices you are presented with in this election.

Sincerely,

Annabelle Jaramillo

Patrick Malone

Xanthippe Augerot

Exercise Your Right to VOTE.

Benton County:
At Your Service
Every Day

TABLE OF CONTENTS

2	Letter from the Commissioners
	Candidates
4	Linn-Benton Community College, Director Zone 2-3(B): Dick Running
4	Linn-Benton Community College, Director Zone 6-7(A): Randy Camp
5	Linn-Benton Community College, Director Zone 6-7(B): Tony Lapiz
6	Corvallis School District 509J, Director Position 2: Tina Baker
6	Corvallis School District 509J, Director Position 6: Brandy Fortson
7	Greater Albany Public School District 8J, Director Zone 3: Michael Thomson
7	Greater Albany Public School District 8J, Director At-Large #1: Eric J Aguinaga
8	Monroe School District 1J, Director Zone 1: Sarah M Fay
9	Philomath School District 17J, Director Position 2: Joe Marcotte
9	Philomath School District 17J, Director Position 2: Anton Grube
10	Philomath School District 17J, Director Position 5: Karen Skinkis
10	Philomath School District 17J, Director Position 5: Troy Muir
11	Philomath School District 17J, Director Position 5: Dolly Victorine
	Measures
12	City of Corvallis Measure 2-123 City Livability Services Local Option Levy
13 - 18	Arguments for Measure 2-123
19	Country Estates Road District Measure 2-122 Five Year Local Option Tax Levy for Operations
20	Registering to Vote and How to Cast Your Ballot
21	Oregon Voter Registration Form
22	Important Information
23	Benton County Official Ballot Dropsites

Information provided in statements or arguments submitted by a candidate, a political party, an assembly of electors or a person supporting or opposing a measure have not been verified for accuracy or truth and do not constitute an endorsement by Benton County.

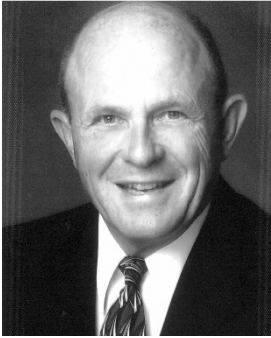
Benton County Elections & Passports Office

Phone: 541-766-6756

Fax: 541-766-6757

Website: www.co.benton.or.us/elections

E-mail: elections@co.benton.or.us



**Linn-Benton
Community
College**
Director
Zone 2-3(B)

**Dick
Running**

Occupation: Retired from a CPA practice

Occupational Background: Certified Public Accountant for 46 years

Educational Background: Pacific Lutheran University BBA; University of Denver MSBA

Prior Governmental Experience: Linn-Benton Community College, Board of Education from 2007 to present

I have been involved with and strongly supported LBCC since starting as a part-time accounting instructor in 1974. Since then, in addition to teaching, I have been their financial auditor, involved in numerous tax levy elections (both operating and capital), Trustee of the LBCC Foundation, played in their fund raising golf tournaments, and many other things. I strongly support LBCC's mission of providing an education that enables all students to benefit from the economic vitality of our communities. I have seen time and time again, that the education that LBCC provides, changes lives!!

(This information furnished by Dick Running)



**Linn-Benton
Community
College**
Director
Zone 6-7(A)

**Randy
Camp**

Occupation: General Manager of CoEnergy Propane

Occupational Background: Business Management

Educational Background: Baker College; Michigan State University

Prior Governmental Experience: LBCC Board of Education Member since 2016, Board Vice Chair in 2018 to present

Business Owner/Manager in the Energy Industry for over 35 years. Previous positions include:

- General Manager of Century Propane in Dayton, OH
- Director of Sales for American Welding & Tank in the Michigan Region
- Vice President/General Manager of Great Lakes Energy Gas Service in Fremont, MI
- President/General Manager of Baker Energy in Jackson, TN

Additional elected or appointed positions:

- President of the PPGA, covering the states of Oregon, Washington, Alaska, and Hawaii
- Vice President of the Pacific Propane Education and Research Foundation
- Member of the LBCC Foundation Board of Trustees
- SafeHaven Humane Society Board Member
- Board Member of the Corvallis Country Club

As an active member of our community, I have worked with many organizations within the both Linn and Benton Counties to help make our area a better place to live. I was one of the first advocates to support and partner with LBCC in development of the Advanced Transportation Technology Center in Lebanon, then hired 3 of their graduates. I am the proud father of an LBCC Alumni that transferred to OSU to get his Bachelors and Masters degrees. LBCC was an important part of my son's educational development and growth, making him a very successful individual.

Linn Benton Community College is a huge part of the success and growth in both Linn and Benton Counties. As a Board Member, I have worked to improve the connection between local business and the LBCC to ensure that the needs of our community are met by the graduates of LBCC. I want to continue to work on behalf of my constituents and the students of LBCC to keep the education delivered affordable and relevant to our area.

(This information furnished by Randy Camp)



**Linn-Benton
Community
College**
Director
Zone 6-7(B)

**Tony
Lapiz**

Occupation: Legislative Director, Representative Dan Rayfield

Occupational Background: Legislative Director

Educational Background: Masters in Public Health, Oregon State University; Bachelor of Science, Humboldt State University

Prior Governmental Experience: Benton County Public Health Planning Advisory Committee

Community Service: Benton County Democrats, 1st Vice Chair; Benton Community Foundation Development Committee Member; Oregon Public Health Association Board Member

"Being the first person in my family to attend college, I value the opportunities my education has afforded me. On the LBCC Board of Education I will work hard to ensure these opportunities continue to be afforded to everyone in our community."
- Tony Lapiz

Tony Lapiz is Committed to High-Quality Education

Tony Lapiz believes that education creates opportunities that help both students and the entire community. This is why Tony Lapiz supports:

- Strengthening our local economy by increasing opportunities in **career technical education** that lead to family wage jobs.
- Collaborating with **faculty, staff, and students** to ensure the college is supporting the educational, instructional, and institutional roles of the college.
- Working with **local businesses** to ensure LBCC is equipping students with the skills they need to walk **out of college and into a job.**

Tony Lapiz will bring a Voice to our Progressive Values

Tony Lapiz brings a diverse set of experiences to the board. From being a **first-generation** college student to serving seven years in the **Army National Guard** to being a **public health advocate.** Tony has a well-rounded understanding of what it means to be a **student, a leader, and a collaborative problem solver.**

Tony Lapiz is Endorsed by Our Leaders

Senator Sara Gelsler; Representative Dan Rayfield
Benton County Commissioners Annabelle Jaramillo,
Xan Augerot, and Pat Malone
Ed Junkins, MD City Council
Vincent Adams, Corvallis School Board Chair
Benton County Democratic Central Committee

Learn more about Tony Lapiz at: VoteLapiz.com

(This information furnished by Tony Lapiz)



**Corvallis School
District 509J**

Director
Position 2

**Tina
Baker**

Occupation: Parent, community volunteer
Occupational Background: The Reynolds Law Firm, community engagement
Educational Background: Linn-Benton Community College, AAS, 2yrs at Oregon State University
Prior Governmental Experience: None

I am a lifelong Corvallis resident, deeply rooted in the community. My two grown children attended Corvallis schools and my youngest is currently in middle school. As a parent I have advocated for accessible classrooms, programs, and extracurricular activities. I am committed to listening to the concerns of families and prioritizing our children. Families deserve equitable solutions to the challenges of today. I strongly support access to mental health services, equity and accessibility, and sustainable practices.

Mental Health: The 509j school district strives to meet the vast needs of the students in the district however still faces challenges. One of the issues faced today is the need to provide adequate support for the mental health needs of children in our schools. Examining how the district can best support these needs can move children from barely managing a school day to thriving. Investing in our children's mental health supports our teachers, staff, and families.

Equity: I will advocate for equitable and accessible education for all. Through identifying and implementing equitable solutions to issues like accessibility we can better serve all children. Accessibility is one of my key priorities and I will work collaboratively to address systemic barriers that many students and their families face.

Sustainability: I will work to find ways the district can increase sustainable practices both for our environment and for our budgets. This is good for our children, good for our environment, and good for the district! Our children are our future. Please support me with your vote.

Endorsements:

County Commissioner Annabelle Jaramillo
 Benton County Democratic Central Committee
 Charles Maughan Ward 2, City Councilor
 Andrew Struthers City Councilor Ward 9
 Our Revolution - Corvallis Allies

(This information furnished by Tina Baker)



**Corvallis School
District 509J**

Director
Position 6

**Brandy
Fortson**

Occupation: Social Justice Paralegal and Event Planner for Heart of the Valley Democratic Socialists of America
Occupational Background: Qualified Mental Health Associate with Trillium and Mental Health Therapist II with the State of Oregon
Educational Background: North Eugene High School, HS, Oregon State University, BS
Prior Governmental Experience: Co-Chair of Heart of the Valley Democratic Socialists of America and Precinct Committee Person with Benton County Democrats

The biggest question folks keep asking is why I am running for office. The answer is, I want to carry on the work I've done as a vocal activist and community organizer, and to work for for our schools and our children.

I plan on continuing that tradition as a valued member of the School Board here in Corvallis, making sure that the LBGTQ+ voice is heard, and respected on all aspects of school board matters as I am a proud member of the community. I have been outwardly queer since high school and last year finally felt safe enough to come out as Non-Binary to my community as a whole.

My Platforms for CSD 509J Include:

1. Advocating for on-boarding and education to all 509J district staff on how utilizing proper pronouns for all students and staff can lead to better graduation rates, test scores, and most importantly help improve our students' mental health and safety.
2. Advocating for a comprehensive and LBGTQ+ inclusive sexual education curriculum to be implemented into our high schools.
3. Advocating for the School Board to continue moving towards equitable learning environments and curriculum regardless of the socioeconomic location of the school.

I am looking forward to the next four years, and to seeing what we can achieve as a community!

Brandy is endorsed by:

Benton County Democratic Central Committee
 Heart of the Valley Democratic Socialists of America
 Charles Maughan, Ward 2 City Councilor
 Tony Lapiz

For more information visit my website at
www.FortsonForCorvallis.com

(This information furnished by Brandy Fortson)



**Greater Albany
Public School
District 8J**
Director
Zone 3

**Michael
Thomson**

Occupation: Caregiver

Occupational Background: Administrative

Educational Background: The Evergreen State College, BA; Clark Community College, AA

Prior Governmental Experience: Albany Budget Committee, current; Albany Human Relations Commission, past; Washington State Legislative Aide, past

Community Experience: Central-Takena PTA Vice President; Greater Albany School District volunteer; St. Mary's Parish Council (past); North Albany Neighborhood Association member; Society of St. Vincent de Paul Albany Conference; Board Member- Friends of Historic Albany.

Michael Thomson
Putting Kids First

Growing up the son of schoolteachers, I learned how important good schools are for a community. My wife and I are the parents of a 2nd grader who has an Individual Education Plan (IEP) and we've worked collaboratively with teachers to guide her schooling. I believe it is important for parents to hold responsibility of their children in the classroom and not to place a higher demand on our teachers. I will seek avenues for lowering the challenges in the classroom our teachers are faced with today.

I want to do everything we can to:

- **Lower Class Size-** Especially in the critical Kindergarten through Grade 3 years.
- **Expand Career & Technical Education-** Provide options for kids to be ready for college or the workforce after graduation.
- **Ensure Equity of Opportunity-** All children, no matter their ability or the neighborhood they come from, deserve the chance to reach their full potential.

I will speak up for all children.

Endorsed by:

"I have known Michael and his family for many years. They have been strong supporters at our community events, and volunteer countless hours with children's activities. They see the importance of quality education for all youth in our community."

Sharon Konopa, Mayor of Albany

"Strong local schools go a long way towards making our neighborhoods great. Please join me in voting for Michael Thomson for GAPS school board."

Dick Olsen, Albany City Councilor Ward 1

www.ThomsonForAlbany.com

(This information furnished by Thomson For Albany)



**Greater Albany
Public School
District 8J**
Director
At-Large #1

**Eric J
Aguinaga**

Occupation: Commercial Sales and Service; Les Schwab Tire Centers

Occupational Background: Police Officer, Human Resource Specialist; United States Air Force Search and Rescue Coordinator, Emergency Management Supervisor; Oregon Joint Emergency Operations Center; Provost Marshal Deputy; United States Army

Educational Background: Community College of the Air Force Criminal Justice; Community College of the Air Force Human Resources; Cascade Union High School

Prior Governmental Experience: United States Air Force; United States Army; Oregon Joint Emergency Operations Center; Co-Chair Communications Yes for Albany Schools

Eric

As a longtime Albany resident, husband, father and businessman, I have learned our community is only as great as the time we invest in it. I have the passion, time, and talent for improving our schools. I will represent all areas of our diverse community with common sense planning, budgeting, and decision making.

Safe Schools

School safety is my number one priority. This includes buildings not having the proper earthquake rating, lockdowns and physical safety, before and aftercare, bullying and selection of staff. Albany has opportunities to improve its safety, and my prior experience in law enforcement will be an asset in identifying and improving these issues. As parents we need to know that our children are just as safe at school as they are at home.

Community Engagement

Director of Fundraising for the Albany Carousel, Albany Public School Foundation Sustainable Funding Committee Specializing in Agricultural & Vocational outreach, Volunteer at Albany High Schools, Volunteer at Albany Aquatics Association, GAPS Bond Oversight Committee ensuring all bond funds. 2019 Nominee for Albany Chamber of Commerce Junior First Citizen.

I ask for your vote. I will represent you as a member of the GAPS School Board with clear common sense direction and even budgeting, while ensuring every student can reach their full potential by the Greater Albany Public School District.

(This information furnished by Eric J Aguinaga)



**Monroe School
District 1J**
Director
Zone 1

**Sarah M
Fay**

Occupation: AVP & Commercial Lender Citizens Bank
Occupational Background: Soil & Grass Seed Research, OSU and NexGen Turf Research
Educational Background: Oregon State University, BA; Oregon State University, Master of Agriculture
Prior Governmental Experience: None

I grew up in Junction City on a horse farm and worked for a local grass seed grower. Heavy involvement in FFA helped me develop lifelong leadership and communication skills. After High School, I pursued agriculture at OSU earning my Master's degree in 2008. Post-graduation I held two positions within my field but ultimately decided that a career working with my community was better suited for my personality. I have been employed with Citizens Bank for the past nine years and my education makes me uniquely qualified to work with local business owners, farmers, ranchers and loggers. I approach my position with a 'people first' focus enabling me to build a multitude of relationships.

My drive and character positioned me to be a part of numerous organizations, all of which I have held leadership roles; Past Chair of Oregon Networking Exchange, President, V.P, Secretary & Treasurer of our Chapter, Treasurer for OApBA, Public Relations Chair for Oregon Women for Agriculture and was instrumental in reviving the Lane County Chapter of which I'm President. Those around me will tell you I lead by example and succeed using accountability.

I chose to move to Monroe after starting our family; I wanted to set roots in a strong, family focused town with neighbors that look out for one another and residents that nurture our youth. I think these qualities make Monroe our hidden jewel. My goals are student oriented; children with the tools, support and resources required to provide them a foundation for success. I feel my background in leadership, position supporting businesses and my commitment for Monroe make me a great candidate for the Monroe School Board Zone 1 Position.

(This information furnished by Sarah M Fay)



**Philomath School
District 17J**

Director
Position 2

**Joe
Marcotte**

Occupation: Small Business Owner

Occupational Background: Corporal, United States Marine Corp – Anti-Tank Assault and Demolition (Honorable Discharge); Civil Engineer; Small Business Owner

Educational Background: Linn Benton Community College; Oregon State University, B.S.

Prior Governmental Experience: None

I care deeply about the Philomath Schools and their future state. As a longtime resident of Philomath, graduating from Philomath High School, I have vested much of my life in this community. When approached to run for the Philomath School Board, I jumped at the opportunity. As my wife and I have decided to raise our family in Philomath, I saw this as an opportunity to aid in giving my children, and the children of Philomath the same great opportunities I had as a student.

As a board member, I will strive to keep politics out of school board decision making, and keep the focus on the students, Philomath School District and our community. I feel this is very important, as the students of Philomath are our future and we need to foster a healthy structured learning environment to build a strong future for Philomath and Philomath School District.

Being a business owner has given our family the opportunity to meet many different people and we find that the relationships built are necessary for forming a strong community bond. Within these bonds we have had the chance to give back and support our local organizations, which has given my wife and I the opportunity to show our children how to invest and give back to our small town. Serving on the Philomath School Board would be another opportunity where I could help make a difference in their future.

I would consider it a great privilege and I ask for your vote to serve the Philomath School District, and our future as a community.

(This information furnished by Joe Marcotte)



**Philomath School
District 17J**

Director
Position 2

**Anton
Grube**

Occupation: Associate Director, Maintenance, Facilities and Construction, University Housing and Dining Services, Oregon State University

Occupational Background: Facilities Manager, The Corvallis Clinic; Varsity Boys Soccer Coach, Philomath High School; Outdoor School Director, Philomath Middle School and Forest Camp Outdoor School

Educational Background: Bachelor of Science, University of Oregon; Honors Diploma, Philomath High School

Prior Governmental Experience: Philomath Fire Board Budget Committee Member; Oregon Statewide Outdoor School Advisory Committee Member

I am running for Philomath School Board Position #2 with the intention of volunteer service to our schools and community. I attended Philomath schools for the entirety of my K-12 education and have always valued and appreciated the support the Philomath community has continually given to our students. I believe the education I received prepared me to be successful when I attended college following graduation from Philomath High School and I would like to support the commitment to education for our current students regardless of the path each student chooses following graduation.

Our family is proud to live in Philomath. We choose to live here because we value the community and we believe in our schools. As our children have moved through each of their grade levels, we have continued to be inspired by the good works that take place in our schools each day and the many activities our children have had the opportunity in which to participate.

I approach the role of school board member as an act of public service for our students, our schools and our community. I believe that as a school board member, I should put our students' interests at the forefront of each decision that comes before the school board for consideration. I believe that every student deserves an equitable opportunity for success. I look forward to having the opportunity to serve our community as a school board member if I were to be elected.

(This information furnished by Anton Grube)



**Philomath School
District 17J**

Director
Position 5

**Karen
Skinkis**

Occupation: Practice Manager, Upper Hand Orthopaedics

Occupational Background: Upper Hand Orthopaedics (2012-present); Good Samaritan Regional Medical Center (2008-2012); Boss Enterprises (1994-2008)

Educational Background: Oregon State University, BS-Political Science; Mapleton High School, diploma

Prior Governmental Experience: None

I am a strong believer and supporter of public education. I chose to enroll my three daughters in the Philomath School District, as I knew they would benefit from a more personal approach, smaller class sizes, and yet still have access to a wide variety of extra-curricular activities like those one would find in larger districts. I want to continue the momentum that has begun with programs like AVID and our performing arts, while we also continue to increase academic rigor and high expectations of performance for all students. I'm also highly supportive of non-college bound students, as we need trades people of all kinds to support our society.

My priorities will be focused on 1) quality of education, 2) equity of education for *ALL* students across our district, with a special interest in those in the "at risk" categories, 3) active support for our teachers, 4) district fiscal responsibility, 5) encouragement of parent participation in their child's education.

I recognize that everything that's either desired or needed comes with an attached price tag, and as a member of the school board, I will lean on the collective wisdom of those around me such as educators, administrators, parents and the community in making the decisions that impact our students, not only for the present, but for the future. I come to this job with an open mind, a broad perspective and the objectivity necessary to perform all of the functions of a school board member.

For these reasons and more, I am asking for your vote on May 21. Thank you.

(This information furnished by Karen Skinkis)



**Philomath School
District 17J**

Director
Position 5

**Troy
Muir**

Occupation: Owner/Manager, Marys Peak True Value

Occupational Background: Marys Peak True Value (1995-2003) (2008-present); Muir Development Inc. (2003-present); Philomath High School Head Football Coach (2007-2016); Philomath JV Head Football Coach (1996-1999) (2001-2002), (2006); Philomath Varsity Football Assistant Coach (2003-2004); Philomath 7&8th Grade Basketball Coach (1998-2000)

Educational Background: Oregon State University, B.S., Business Administration

Prior Governmental Experience: None

I may have helped you fix a sink drain or taught you how to wire a light switch over the years at my hardware store, or maybe I've had the opportunity to coach your son or daughter. If so, you know I am an honest, upfront, hardworking individual that makes no excuses. I have high expectations of anyone working with, for, or around me to do things the right way every time. This is exactly what you will get from me as a school board director. Whether working through budget issues, teacher concerns, or other policy issues, I will work with other board members to find the best possible solutions.

My family first came to Philomath in 1945 and has been a part of the community ever since. My wife and I have three kids currently enrolled in the Philomath School District. I've been involved with the school district in various capacities since 1990. First as a student, then as a volunteer coach, and eventually as a paid coach in both football and basketball. I have helped hundreds of students/athletes over the last 24 years achieve goals on and off the field, whether it be coaching the team to victory on Friday night, mentoring a player for his/her senior project, or simply making sure a student is on top of their classes and preparing to graduate.

I would like to now focus my energy towards supporting our district on a successful path, continuing to provide ample opportunities, a quality education, and diversified programs for all students.

(This information furnished by Troy Muir)



**Philomath School
District 17J**

Director
Position 5

**Dolly
Victorine**

Occupation: Career & Technical Education/Culinary Arts
Teacher

Occupational Background: West Albany High School
(2014-Present); Crossler Middle School Salem, (2003-2014);
North Valley High School Grants Pass (2002-2003);
Philomath High School (student teaching (2002)

Educational Background: Oregon State University, MA,
BS; Redmond High School, Diploma

Prior Governmental Experience: None

Personal Statement

My husband and I have lived in Blodgett for 12 years. We have two daughters, one at PES and one at Clemens. We chose this area to raise our children in because of its outstanding reputation for educational growth, proximity to employment, and access to outdoor hobbies: hiking, fishing and hunting. I am a first-generation college graduate and am thankful for all the educational opportunities that have presented themselves, but my roots in the agricultural, forestry, and marine trades have always played a vital role in my definition of success. As an educator for the past 18 years, I have witnessed the variety of pathways my students pursue. My heart is filled with pride when students are accepted into college/trade schools, have landed their first job, or when they demonstrate genuine gratitude or civic responsibilities. Educational goals may look different for everyone, but should be a priority for all.

Goals

As a potential board member, I look forward to meeting our district goal of *graduating EVERY student, and transition EACH into a job, training, or college*. I listen attentively, collaborate equally, provide solutions, and value honest communication. I support all CTE pathways, AVID and electives. I believe these to be key components in shaping students into successful adults. I would like to see PSD continue to hire and retain the best support staff, teachers, and administrators; continue its growth in the STEM/STEAM and CTE/Vocational offerings; continue its growth in robust curriculum; and continue its commitment to safety. Above all, I want our students to graduate feeling they have been well prepared for their next stage of life.

(This information furnished by Dolly Victorine)

City of Corvallis Measure 2-123

Ballot Title

Caption: City Livability Services Local Option Levy

Question: Shall Corvallis impose \$1.07 per \$1,000 of assessed value, for five years beginning July 1, 2019, for livability services?

This measure may cause property taxes to increase more than three percent.

Summary: The City of Corvallis will use the tax revenue from this measure to maintain services that enhance City livability and culture. Revenue from this measure would be restricted in the following amounts or percentages (with FY 2019-2020 estimated dollar amounts):

- 40.8% maintains the 2018 funding level for services at Parks & Recreation including recreation programs, Osborn Aquatic Center, Chintimini Senior and Community Center, and parks services (\$2,111,740);
- 51.9% maintains the 2018 funding level for services at the Corvallis Public Library including open days and hours, materials, programs, and outreach (\$2,687,660);
- 4.8% adds funding to improve parks maintenance (\$250,000);
- 2.5% adds funding for the Majestic Theatre (\$130,000); and
- continues annual grants to local social service agencies (\$360,000)

By fiscal year, this levy is estimated to raise:

19-20	\$5,539,400
20-21	5,705,500
21-22	5,876,700
22-23	6,053,000
23-24	6,234,600
Total	\$29,409,200

Explanatory Statement

The City of Corvallis proposes a local option property tax levy at the rate of \$1.07 per \$1,000 of assessed value, beginning July 1, 2019, and lasting for five years. This measure may cause property taxes to increase more than three percent.

This local option levy is proposed to replace the current levy of \$0.82 per \$1,000 of assessed value as well as a general obligation bond tax levy of \$0.25 per \$1,000 of assessed value, which both expire June 30, 2019. The proposed new local option tax levy of \$1.07 would continue the same total rate and continue funding livability services and programs beginning July 1, 2019.

The tax revenue from this measure would be used to support operation of the Corvallis Library, and recreation programs for the Parks and Recreation Department, including operation of the Osborn Aquatic Center and the Chintimini Senior Center. The levy would also provide funding for allocations to social service agencies each year. The revenue from the levy would be restricted to these uses in the following proportions (with FY 2019 estimated dollar amounts):

- 40.8% maintains the 2018 funding level for services at Parks and Recreation including recreation programs, Osborn Aquatic Center, Chintimini Senior and Community Center, and parks services (\$2,111,740);
- 51.9% maintains the 2018 funding level for services at the Corvallis Public Library including open days and hours, materials, programs, and outreach (\$2,687,660);
- 4.8% adds funding to improve parks maintenance (\$250,000);
- 2.5% adds funding for the Majestic Theatre (\$130,000); and
- continues annual grants to local social service agencies (\$360,000).

(Submitted by City of Corvallis)

**No Arguments Against
This Measure Were Filed**

City of Corvallis
Measure 2-123
Argument For:

The League of Women Voters of Corvallis supports the passage of Measure 2-123.

The League, a nonpartisan political organization, encourages informed and active participation in government, works to increase understanding of major public policy issues, and influences public policy through education and advocacy.

The League supports Measure 2-123 because it authorizes a five-year local levy to maintain funding for public services that are critical to the vitality and well-being of our community. The property tax rate will be unchanged due to an expiring municipal bond and expiring levy.

We base our support on the League's Community Planning and Library Financing positions that have been formulated after study and member agreement. Those positions call for support of services that provide high quality educational and recreational opportunities for all community members to enjoy. In particular, the Library and the Parks and Recreation Department (providing support for our beautiful city parks, hiking trails, Senior Center, Aquatic Center and Majestic Theatre) would face steep budget cuts if this levy does not pass. Therefore, it is vitally important to the health and well-being of our community that citizens pass Measure 2-123, so these important services are maintained and accessible for all to enjoy.

The League of Women Voters urges a YES vote for Measure 02-123 because passage will:

Keep the Library open seven days a week and enable the purchase of new books and other materials;

Keep the Parks and Recreation Department's youth/adult sports, classes, and community concerts;

Keep Osborn Aquatic Center open;

Keep the Senior Center open, including Meals on Wheels;

Keep the Majestic Theatre open for performing arts events and artistic/cultural education; and

Keep providing support to local social service organizations that help our most vulnerable citizens.

VOTE YES FOR 2-123

Please vote YES on May 21 to keep our valued city services.

(This information furnished by League of Women Voters of Corvallis)

City of Corvallis
Measure 2-123
Argument For:

Vote Yes for 2-123 May 21, 2019

In 1899, a group of Corvallis women began our public library. In the ensuing 120 years the Corvallis Library has become nationally recognized.

Citizen support in countless ways is the reason for the wide range of excellent services and events offered by our Library, in addition to a top-notch staff.

With visits of over one half million people annually, our library is one of the most heavily used for its size in the nation. Most importantly it is a service that is open to all without regard to age, background, income, or circumstances and is the true great equalizer of our society.

Our library is financed by our taxes. The community's love for our library has traditionally provided strong tax support.

The proposed levy will retain the current level of service, hours, and materials collection purchases.

Failure of the levy translates into no Sunday or Monday hours, limited evening hours, plus an incredibly large reduction in materials purchases, outreach and programming.

Failure of the levy will be a serious blow to the quality and availability of the services provided to the community by the Corvallis Public Library, one of the jewels in Corvallis' crown.

BE A PART OF THE CORVALLIS TRADITION

VOTE YES ON MAY 21

KEEP OUR LIBRARY OPEN AND HEALTHY

(This information furnished by Corvallis-Benton County Public Library Foundation)

City of Corvallis Measure 2-123 Argument For:

Five years ago, Corvallis voters approved Measure 2-86, to maintain vital support for the Library, Aquatic Center, Senior Center, and social services. Even with that added support, the City has had to cut \$1.2 million to balance the budget over the past three years.

Measure 2-86 expires this summer. And without this new levy - Measure 2-123 - another \$5.5 million and 441 jobs will have to be cut. Everything the voters protected five years ago, and more, will be lost, unless we pass Measure 2-123 now.

As a grassroots community group that worked to pass 2-86 back then and is working for 2-123 now, Friends of Corvallis believes it is essential that we, the voters, protect these valued services, prevent harmful cuts.

Your YES vote means our Library will stay open on Mondays, Sundays and weekday evenings. And the Library will be able to continue purchasing new books, e-books, and other materials.

Your YES vote means Osborn Aquatic Center will stay open. Swim lessons, swim teams and wellness classes will go on. The therapy pool continues. And families can keep having fun.

Your YES vote means the Senior Center will stay open, providing more than 8,000 residents classes, social activities, events and services such as Meals on Wheels and Senior Tax Aide.

Your YES vote means Public Recreation will continue for adult and youth sports, day camps, and environmental education classes.

Your YES vote means the Majestic Theater will stay open, with over 130 performances yearly, support for dozens of community arts programs and opportunities for over 2,000 volunteers.

Your YES vote means Social Services funding will be maintained for our city's most vulnerable, the homeless and those in transition.

Your YES vote will not make your property tax bill go up. An expiring bond and levy mean this levy would have a net zero effect.

Vote YES for 2-123! Vote YES for a livable Corvallis!

(This information furnished by Friends of Corvallis PAC)

City of Corvallis Measure 2-123 Argument For:

The Board of Directors of the Friends of the Corvallis-Benton County Public Library urges a 'YES' vote on Measure 02-123.

Half of the revenue raised by the levy, with no increase in your property tax bill, will be used to maintain Corvallis Public Library's current superior level of services. If the measure does not pass the Library will be closed Sundays and Mondays and most evenings; the budget for new books and other media will be reduced by over half and staffing will shrink by 28%.

Cuts of this magnitude will severely erode service quality; specifically:

- Decrease of Library open hours by one-third.
- Less than half as many new books, ebooks, DVDs, databases, and magazines available for circulation and use in the library per year.
- Termination of 58 library employees in positions from management to shelvers and all on-call employees causing severe cutbacks in programming including the school classroom Book Box program.
- Reduced hours for the public computer lab.
- Less support for literacy services for young children and caregivers.
- Curtailed opportunities for constructive activities for youth.

These drastic losses are inconsistent with our library's history of high standards of service and public demand. Corvallis' book circulation per borrower is almost triple the national average of libraries for similar population size.

We believe Corvallis citizens understand the value an adequately funded public library holds for the civic, economic, social, educational, cultural, and safety needs of the community. For many, using the Library is part of daily living. Our library is unique among local institutions with its doors open and providing free services each day of the week for everyone equally.

A 'YES' vote for Measure 02-123 is your personal affirmation that the public library and its services are vital to the quality of life in Corvallis.

(This information furnished by The Board of Directors of the Friends of the Corvallis-Benton County Public Library)

City of Corvallis
Measure 2-123
Argument For:

The Majestic Theatre is a critical nexus for the arts and culture community in our area. The theater was purchased by the City through an initiative led by the citizens of Corvallis and has been home to our community's arts and culture activities for over 100 years.

The Majestic's programs, classes, and events provide cultural enrichment, recreation, and an opportunity to realize their creative dreams for over 20,000 members of our community each year. Each year, over 130 arts and culture performances occur the Majestic, over 75% of which are created by local arts organizations. The Majestic provides a home for dozens of local arts organizations and programs that otherwise would likely not exist without its support.

The future of our community grows up at the Majestic. Thousands of children each year have their hearts, minds, and bodies enriched by the classes, programs, and events they attend. The Majestic is critical to our children acquiring the STEAM (Science, Technology, Engineering, Arts and Mathematics) critical thinking skills that will make them happy, successful adults.

The funding received by the Majestic from this levy will provide less than 20% of the operational budget for the theater; over 80% of its expenses are covered by revenue generated by its operations. This funding is primarily used to support volunteer use of the facility, ensure events are properly promoted, and keep ticket prices affordable.

If this levy does not pass, the Majestic Theatre will close. None of the local arts organizations or programs mentioned above have a viable replacement facility. It is almost certain that these programs will simply cease to exist without the Majestic. Our community saved the Majestic from fading into history in 1985 for a reason; Corvallis cares about the arts. Let's not let the most accessible arts and culture hub in our community disappear over a levy that won't cost us even one penny more in property tax.

(This information furnished by Majestic Ambassadors)

City of Corvallis
Measure 2-123
Argument For:

Corvallis is an inclusive community.

For no increase on your tax bill, you can continue to receive the same level of service from the Library, Chintimini senior center, Osborn aquatic center and Parks & Recreation you have always received. That means access when you need it, items that you want, services delivered by staff that care, and help to anyone who needs it. Community services around the nation are facing financial struggles but Corvallis has held strong to the belief that libraries, parks and people change lives. Renew that commitment and show that you believe literacy, education, community and lifelong learning are important. Keep that promise to the community by supporting the levy.

The library staff is consistently complimented and lauded by community members. A recent community survey showed customer satisfaction at an all-time high of 94%. The Library currently has 45FTE and will be reduced to 31.25FTE without levy funding. All early literacy outreach services will immediately end. Book Box, the monthly classroom delivery of books to our schools, will also immediately end. Music, technology, science, arts and crafts, community conversations and so much more are the focus of library events that will need to end without support.

Our senior center will close without the levy.

Our Osborn Aquatic center will close without the levy.

Our parks and recreation programs will cease.

Keep our legacy alive at no additional cost and renew the levy. Vote YES on 2-123.

(This information furnished by AFSCME Local 2975 City of Corvallis Employee Union)

City of Corvallis**Measure 2-123****Argument For:****Please help save Osborn Aquatic Center and Otter Beach! Vote YES for Measure 2-123**

If Measure 2-123 fails, our community's only public swimming pool will be closed. Along with teaching thousands of children swimming lessons each year and helping Seniors gain access to low-impact therapy classes, did you know Osborn is also home to over 10 teams and clubs?

Work ethic, character, compassion, team work, high self-esteem and physical fitness are just a few of the positive attributes that team members come away with each and every day by being a part of a team at Osborn.

These teams and clubs support children as young as 5 years old all the way up to Masters swimmers in their 80's. Osborn provides daily access, in which, if closed, many of these people would not be able to participate. These teams are an incredibly important part of our community. Teams like Special Olympics, High School Swim Teams, High School Water Polo Teams, Synchronized Swimming Club, Underwater Hockey Club, and the Corvallis Aquatic Team all bring benefits to Corvallis that are not easy to replace.

According to Visit Corvallis, Osborn and these teams bring in an estimated \$1.5 million of outside money every year, which is spent at local businesses right here in our community.

Osborn is vital to the development of young children across Corvallis and greatly enhances the quality of life for thousands more. Please help keep Corvallis great and save the services used by thousands in our community, from infants to seniors alike.

Vote "YES" for Measure 2-123.

(This information furnished by Coaches, Teams and Clubs of Osborn Aquatic Center)

City of Corvallis**Measure 2-123****Argument For:**

The Chintimini Senior Center is a wonderful place for the aging population of our community. There are senior oriented functions such as programs promoting healthy aging, classes aimed at their interest and capabilities, appropriate support group function, assistance with taxes and Medicare insurance options, and Meals on Wheels. Closure of the Senior Center will be devastating to many in the senior population surrounding Corvallis, as all of these activities of the Center will have difficulty finding another location to continue their existence.

The Senior Center is bustling with activities and is a welcoming place where seniors help seniors. The Chintimini Senior and Community Center holds over 550 programs annually. Over 500 people volunteer at the Senior Center providing approximately 5,000 hours of service to the community. The programs are primarily for people over the age of 50, but younger participants can attend. Individuals can stay in shape using Yoga, Nia, Pilates or aerobics classes. Support groups are available and help many through difficult times. Seniors can also learn more about Medicare or get assistance with their tax preparation. Being a part of the Chintimini Senior and Community Center and using these services can and does improve seniors' health and attitude. Volunteer teach classes, provide customer service at the registration desk, lead hikes and trips, prepare a daily meal at the Center for over 2,800 annually, deliver meals to home bound individuals, and more! Participants make over 32,000 visits to the Senior Center annually.

As more boomers retire, the need for the Chintimini Senior and Community Center keeps increasing. I support measure 2-123 because it will continue the operation of this invaluable resource for the community and its' seniors.

Lynda Wolfenbarger

Chintimini Senior and Community Center Participant

(This information furnished by Lynda Wolfenbarger
Chintimini Senior and Community Center Participant)

City of Corvallis Measure 2-123 Argument For:

Community members and organizations urge you to vote YES on Measure 2-123.

Whether you have lived here for a year or a lifetime, you know how important the Library, the Osborn Aquatic Center, the Majestic Theatre, the Senior Center, youth and adult recreation programs, and support services for our most vulnerable citizens are. **Your YES vote on 2-123 will ensure these services continue.**

Passing Measure 2-123 will not make your property tax bill go up. Both an expiring bond and the expiring current levy mean this levy would have a net zero effect on your property tax bill.

Now is the time to show how much you care for Corvallis. Join us in voting YES on Measure 2-123, for the good of all us, here in Corvallis.

Community Members:

Vincent Adams, Sami Al-Abdrabbuh, Katherine Bremser, Hal Brauner, Karyle Butcher, Cressa M. Campos, Jay Conroy, Judy Corwin, Mike Corwin, Cindy L. Dahl, Tatiana Dierwechter, Patrick Hadlock, Phillip Hays, Angela Hibbard, Lyle Hutchens, Sharon Hutchens, Jimbo Ivy, Katy Krup, Greg Little, Nancy Loving, Julie Manning, Sarah Finger McDonald, James Mellein, Rocio Muñoz, Brigetta Olson, Jon Pywell, Charnee Rose, Carl Schreck, Jacque Schreck, Anne Schuster, Rhonda Soule, Cynthia Spencer-Hadlock, Cliff Trow, Tony Van Vliet, Todd Wheeler, Bill Witt, Laura Worden, Mark Worden, Curtis Wright, Penny York

Community Organizations:

League of Women Voters Corvallis
Benton County Democratic Central Committee
Casa Latinos Unidos de Benton County
Corvallis Chamber of Commerce
Corvallis People for Parks
AFSCME Local 2975 Corvallis Employee Union
Corvallis-Benton County Public Library Foundation Board
Corvallis Aquatic Team
Board of Directors of the Friends of the Corvallis-Benton County Library
Majestic Ambassadors
United Ways serving Linn, Benton & Lincoln Counties
Visit Corvallis
Willamette Neighborhood Housing Services

Support our community. Protect Valued Services. Prevent Harmful Cuts. Vote YES on 2-123.

(This information furnished by Friends of Corvallis PAC)

City of Corvallis Measure 2-123 Argument For:

Elected officials recommend YES on Measure 2-123

As your elected representatives, past and present, we urge you to vote YES for Measure 2-123, the Corvallis Livability Services Levy.

For years now, the City's leaders and staff have worked to maintain services in the face of revenue shortfalls. They have scaled back programs and made substantial cuts. It's still not enough. To balance the budget next year - without this levy - 441 jobs and \$5.5 million will have to be cut.

We urge you to prevent such harmful cuts. Vote YES on 2-123.

Passing Measure 2-123 will enable our community to maintain livability services at their current service levels:

- Keep the library open Sundays, Mondays, all evenings, and be able to buy new books and materials
- Maintain Parks & Recreation youth and adult sports, classes, community concerts and events
- Keep Osborn Aquatic Center open so kids can learn to swim, people can stay fit, and all can have fun
- Keep the Senior Center open for activities, Meals on wheels, and support groups
- Keep the Majestic Theatre open for community shows, dance, music, and artistic education
- Provide support to local organizations that help our most vulnerable citizens

Passing Measure 2-123 will not make your property tax bill go up. Both an expiring bond and the expiring current levy mean this levy would have a net zero effect on your property tax bill.

Vote YES vote on 2-123. Protect and maintain valued services that help make Corvallis a wonderful place.

Senator Sara Gelser

Representative Dan Rayfield

Corvallis School Board

Benton County Commissioners
Xanthippe Augerot; Annabelle Jaramillo; Pat Malone

Corvallis Mayor and City Council

Biff Traber	Barbara Bull	Charlyn Ellis
Bill Glassmire	Ed Junkins	Hyatt Lytle
Charles Maughan	Jan Napack	Andrew Struthers
Nancy V. Wyse		

Former Elected Officials

Hal Brauner	Karyle Butcher	Franklin Hahn
Richard E. Hervey	Julie Manning	Jacque Schreck
Anne Schuster	Cliff Trow	Tony Van Vliet
Penny York		

(This information furnished by Friends of Corvallis PAC)

City of Corvallis**Measure 2-123****Argument For:**

No Arguments Against
This Measure Were Filed

Vote YES on 2-123 and YES for Livability!

The Osborn Aquatic Center (OAC) is an important center of activity in the Corvallis community and surrounding areas. OAC is not only a recognized source of recreational activity, but also provides opportunities for health improvement, safety education, fitness, and public meeting space. It provides services to people of all ages from infant to senior citizen, and to those with a wide range of physical ability.

OAC is good for our economy. As one of the finest competition facilities in Oregon, OAC brings in thousands of visitors annually and over \$1.5 million dollars to the local economy. Major events at the pool include championship and other swim meets for high school, collegiate, and other youth swimmers, adult masters swimmers, and the Special Olympics; and water polo championships at the high school and collegiate level. The facility offers a wide variety of course opportunities including learn-to-swim programs; therapy, specialty, and fitness classes; Red Cross safety courses; and WaterBabies, an award-winning program developed at Osborn.

As members of the Corvallis Aquatic Team, we witness our fellow community members utilizing Osborn for a wide variety of reasons. Each day we see children and adults learning to swim and be safe in and around water, teens taking lifeguarding courses in preparation for their first jobs, and people with special needs improving their health and wellness. We watch elite-level swimmers competing and training, and young children winning their first ribbons. We observe families and friends gathering for birthday parties and service organizations holding weekly meetings. We see people of all ages meeting at the pool to socialize and exercise together.

Corvallis is ranked as one of the top cities for livability in the nation. Our pool - along with our library, senior center, theater, and parks and recreation programs - are vital parts of what makes Corvallis such a wonderful community.

Vote YES on 2-123

(This information furnished by Corvallis Aquatic Team, Inc.)

Country Estates Road District Measure 2-122

Ballot Title

Caption: Five Year Local Option Tax Levy For Operations

Question: Shall the District impose a tax of \$0.520/\$1,000 valuation for maintenance operations for five years beginning in 2019? This measure may cause property taxes to increase more than three percent.

Summary: The Country Estates Road District submits a local option tax levy intended to continue funding for necessary major repairs, as the permanent tax base is sufficient only for routine crack sealing and minor pothole repair. The current levy expires with this tax year. This request is at the same rate, and will allow the rebuilding process to proceed.

This measure will cost approximately \$150 per year for the average home in our neighborhood, and generate about \$14,000 per year for the Road District. It will expire in five years.

Explanatory Statement

The Country Estates Road District is in the process of overlaying our roads with new asphalt. Our permanent tax rate of \$0.560/\$1,000 valuation is not sufficient to finance the work. We have used a local option levy to provide the additional needed revenue, but that expires with this tax year. The District is requesting approval of a new five year local option levy to at the same rate, \$0.52/\$1,000 valuation, to replace the expiring levy and allow work to proceed.

The rate of \$0.520/\$1,000 valuation will cost the average home in our neighborhood about \$150/year, and raise an additional \$14,000/year for our roads. The life of the levy is five years. Three sections of road remain to complete the project. Once finished, it is possible we will not need another levy for some time.

(Submitted by Country Estates Road District)

No Arguments For or Against
This Measure Were Filed

Registering to Vote

To vote in Oregon you need to be registered in the county where you reside.

You can register if you can answer yes to these three questions:

- Are you a resident of Oregon?
- Are you a US citizen?
- Are you at least 16 years of age?

If you are 16 years of age, you will not receive a ballot until an election occurs on or after your 18th birthday.

How to register

You can register to vote online at www.oregonvotes.gov or you can get a voter registration card at any of the following places:

- Benton County Elections Office
- any county elections office
- the Secretary of State's Office
- some state agencies such as the Division of Motor Vehicles (DMV)
- a voter registration drive

You can fill the card out in person or send it in by US mail. You can also print out a registration card online at: www.oregonvotes.gov.

What information is required to register?

To complete your registration you will provide your:

- full legal name
- home address
- date of birth
- signature
- valid identification

Updating your voter registration

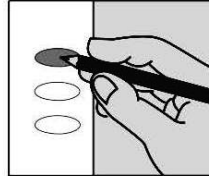
Once you have registered, you are responsible for keeping your information up to date. You can do this online at www.oregonvotes.gov or by completing and returning a voter registration card with the new information. You should update your registration if you do any of the following:

- change your home address
- change your mailing address
- change your name
- change your signature
- want to change or select a political party
- will be away from home on election day

How to Cast Your Ballot

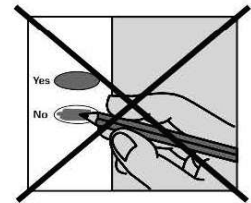
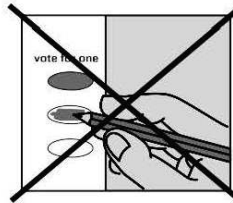
check your ballot!

Use a black or blue pen to fill in the ovals next to your choices.



If you vote for more candidates than allowed, or if you vote **both Yes and No** on a measure, it is called an overvote.

Your vote **will not count** for that candidate or measure.



You do not have to vote on all contests. Those you do vote on will still count.

Contact Benton County Elections to request a replacement ballot if:

- you make a mistake
- your ballot is damaged or spoiled
- you lose your ballot

Benton County Elections

Phone: (541) 766-6756

Fax: (541) 766-6757

TTY: (541) 766-6080

Email: elections@co.benton.or.us

1 866 ORE VOTE/673 8683

Se Habla Español

www.oregonvotes.gov



Use online voter resources to register or update your registration status. **oregonvotes.gov**

qualifications

Are you a citizen of the United States of America? yes no
Are you at least 16 years of age? yes no

If you mark no in response to either of these questions, do not complete this form.

personal information *required information

last name* first* middle
Oregon residence address (include apt. or space number)* city* zip code*
date of birth (month/day/year)* county of residence
phone email
mailing address (required if different than residence) city zip code

Oregon Driver's License/ID number

Provide a valid **Oregon Driver's License, Permit or ID:**

I do not have a valid **Oregon Driver's License/Permit/ID.**
The last 4 digits of my Social Security Number (SSN) are:

x x x - x x -

I do not have a valid Oregon Driver's License/ID or a SSN.
I have attached a copy of **acceptable identification.**

political party

- Not a member of a party
- Constitution
- Democratic
- Independent
- Libertarian
- Pacific Green
- Progressive
- Republican
- Working Families
- Other _____

signature I swear or affirm that I am qualified to be an elector and I have told the truth on this registration.

sign here _____ date today _____

! If you sign this card and know it to be false, you can be fined up to \$125,000 and/or imprisoned for up to 5 years.

registration updates Complete this section if you are updating your information.

previous registration name previous county and state
home address on previous registration date of birth (month/day/year)

The candidate and measure information within was provided by candidates, cities, districts and other interested parties that chose to participate in this portion of the election process. Candidate statements and measure arguments are optional filings.

Please remember that all ballots must be received at an official ballot drop site in Oregon before 8:00 PM on Tuesday, May 21, 2019.



BENTON COUNTY OFFICIAL BALLOT DROPSITES

BENTON COUNTY ELECTIONS & PASSPORTS OFFICE

Basement of County Courthouse
120 NW 4th St Rm 13, Corvallis OR 97330
541-766-6756

Mon thru Fri 8:00 am to 5:00 pm
Election Day 7:00 am to 8:00 pm

24-HOUR OUTSIDE DROP BOXES

BENTON COUNTY COURTHOUSE

Courthouse lawn on Fourth Street
120 NW 4th St, Corvallis OR 97330

BENTON COUNTY COURTHOUSE

Accessible entrance on Fifth Street
120 NW 4th St, Corvallis OR 97330

BENTON COUNTY COURTHOUSE

Across the street on Fifth Street
180 NW 5th St, Corvallis OR 97330

WELLS FARGO BANK

Timberhill Shopping Center
2543 NW Kings Blvd, Corvallis OR 97330

BENTON COUNTY SUNSET BUILDING

Drop box in parking lot
4077 SW Research Way, Corvallis OR 97333

LINCOLN HEALTH CENTER

Drop box in parking lot
121 SE Viewmont Ave, Corvallis OR 97333

NORTH ALBANY SHOPPING CENTER

Drop box in front of IGA Supermarket
621 Hickory Ave NW, Albany OR 97321

MONROE COMMUNITY LIBRARY

Drop box in parking lot
380 N 5th St, Monroe OR 97456

PHILOMATH PUBLIC LIBRARY

Drop box near main entrance
1050 Applegate St, Philomath OR 97370

INSIDE BALLOT DROP BOXES

CORVALLIS PUBLIC LIBRARY

645 NW Monroe Ave, Corvallis OR 97330
541-766-6793

Mon thru Thu 10:00 am to 8:00 pm
Fri thru Sat 10:00 am to 6:00 pm
Sun 1:00 pm to 5:00 pm

OSU VALLEY LIBRARY

121 The Valley Library, Corvallis OR 97331
541-737-3331

Mon thru Thu 7:00 am to 12:00 midnight
Fri 7:00 am to 10:00 pm
Sat 10:00 am to 10:00 pm
Sun 10:00 am to 12:00 midnight

SENIOR CITIZENS CENTER OF CORVALLIS

2601 NW Tyler Ave, Corvallis OR 97330
541-766-6959

Mon thru Fri 8:00 am to 4:00 pm
Election Day 8:00 am to 8:00 pm

LBCC BENTON CENTER

757 NW Polk Ave, Corvallis OR 97330
541-757-8944

Mon thru Thu 8:00 am to 7:00 pm
Fri 8:00 am to 4:00 pm
Election Day 8:00 am to 8:00 pm

CITY LIMITS MARKET

5800 NW Hwy 99W, Corvallis OR 97330
541-745-7194

Mon thru Thu 6:30 am to 8:00 pm
Fri 6:30 am to 8:30 pm
Sat thru Sun 8:00 am to 8:30 pm

JOHN BOY'S ALSEA MERCANTILE STORE

186 E Main St, Alsea OR 97324
541-487-4462

Mon thru Sat 6:00 am to 8:00 pm
Sun 7:00 am to 8:00 pm

Benton County Elections
120 NW 4th St Rm 13
Corvallis, OR 97330

NONPROFIT
CAR-RT SORT
U.S. Postage
PAID
Portland, OR
Permit No. 692



*****ECRWSS****
RESIDENTIAL CUSTOMER

OFFICIAL BENTON COUNTY
VOTERS' PAMPHLET
MAY 21, 2019 SPECIAL ELECTION

