



OFFICIAL VOTERS' PAMPHLET

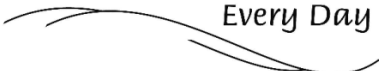
**PRIMARY ELECTION
MAY 19, 2020**

The publication and distribution of this pamphlet is coordinated by the County Clerk. The candidate and measure information within was provided by candidates, cities, districts and other interested parties that chose to participate in this portion of the election process.

Benton County:

At Your Service

Every Day





BOARD OF COMMISSIONERS

205 NW Fifth Street
P.O. Box 3020
Corvallis, OR 97339-3020
(541) 766-6800
FAX (541) 766-6893

Dear Benton County Voter:

Tuesday, May 19, 2020, is Primary Election day in Oregon. Voters affiliated with the Democrat and Republican parties will have the opportunity to nominate partisan office candidates for the November General Election ballot. All voters will be able to vote on non-partisan office contests, as well as, any measure that affects them.

The County Clerk publishes the Benton County Voters' Pamphlet. Each candidate has the opportunity to issue a statement about themselves for inclusion in this pamphlet. For voters with a local measure on their ballot, proponents and opponents of measures have the opportunity to submit arguments for or against local measures in this pamphlet. There is a **digital version of this pamphlet** available on the Elections Office website located at www.co.benton.or.us/elections.

Primary Election ballots must be received at an official ballot drop site within the State of Oregon by 8:00 PM on Election Day, Tuesday, May 19, 2020. You can mail your ballot using the postage paid ballot return envelope, or drop it at one of the official ballot drop box locations listed in this pamphlet and on our website. For additional information or assistance, please contact the Elections Office by phone: (541) 766-6756; email: elections@co.benton.or.us or in-person in the basement of the historic Benton County Courthouse, 120 NW 4th Street, Room 13, in Corvallis.

Please Note: Do NOT return your ballot by mail after May 12th, 2020, to ensure receipt at the Elections Office by the 8:00 PM May 19th deadline. After this date, we recommend using one of our many Official Ballot Drop Sites located throughout the county and listed on page 12 in this pamphlet.

We hope this pamphlet provides helpful information about candidates and other choices you are presented with in this election.

Sincerely,

Patrick Malone

Xanthippe Augerot

Annabelle Jaramillo

Exercise Your Right to VOTE.

Benton County:

At Your Service

Every Day

TABLE OF CONTENTS

2	Letter from the Commissioners
3	Table of Contents
	County Commissioner, Position 2
4	Xan Augerot, Democrat
4	Tom Cordier, Republican
	County Commissioner, Position 3
5	Nancy V Wyse, Democrat
5	John E Sarna, Republican
	City of Adair Village
6	2-125 Adopts Revised Adair Village Charter
	City of Albany
7	22-181 Renewal of the Ambulance, Fire, and Police Local Option Tax
7	22-181 Argument For
	Lane Community College
8	20-306 Bonds to Construct, Improve Facilities, Address Safety and Technology Needs
9	Important Information
10	Registering to Vote and How to Cast Your Ballot
11	Voter Registration Form
12	Official Ballot Drop Sites
13	Prepaid Postage Ballot Return Envelope
14-15	Rank Choice Voting

Information provided in statements or arguments submitted by a candidate, a political party, an assembly of electors or a person supporting or opposing a measure have not been verified for accuracy or truth and do not constitute an endorsement by Benton County.

Benton County Elections & Passports Office

Phone: 541-766-6756

Fax: 541-766-6757

Website: www.co.benton.or.us/elections

E-mail: elections@co.benton.or.us



Benton County
Commissioner
Position 2
Democrat

Xan
Augerot

Occupation: Benton County Commissioner

Occupational Background: Executive Director, Marys River Watershed Council; Proprietor, Pangaea Environmental; VP Science/Conservation Director, Wild Salmon Center; Research Assistant, Oregon State University

Educational Background: OSU Dept of Geosciences, Ph.D. Geography; University of Washington, M.A. Marine Affairs and B.A. Economics with honors

Prior Governmental Experience: Board Member for: Association of Oregon Counties, Benton Community Foundation, Community Services Consortium and InterCommunity Health Network CCO; Member, Oregon Youth Development Council; Knauss Congressional Fellow; Willamette Criminal Justice Council, Lay Committee Chair

Everyone deserves to live in a healthy and safe community.

Benton County does not currently have the capacity to jail lawbreakers and provide treatment for their mental health or substance use issues; neither do we have the capacity to house our less fortunate who are living on the street, or to ensure safe, livable neighborhoods and prosperous commercial areas.

- I am leading a team to develop better criminal justice facilities and improved mental health resources.
- I helped form the Home, Opportunity, Planning and Equity (HOPE) Board to provide affordable housing for all.
- When climate data demonstrated the urgency of our climate crisis, I asked the county to accelerate greenhouse gas reduction goals to achieve net zero by 2050.
- I am working every day to ensure diversity, equity, and inclusion in all of our programs and policies.

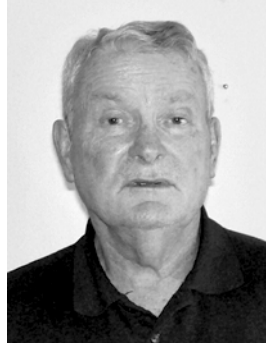
We pride ourselves on being a progressive and sustainable community, but there is still much more to do. Re-elect me, so that together we can build a better Benton County.

Endorsed by:

Corvallis School Board Chair Sami Al-Abdrabbuh
Mike Corwin; Bill Gellatly; Senator Sara Gelser
District Attorney John Haroldson; Sheriff Scott Jackson
Commissioner Annabelle Jaramillo
Sharon Konopa, Mayor of Albany
Hyatt Lytle, Corvallis City Councilor
Rachael Maddock-Hughes, Owner, Sequoia Consulting
Julie Manning; Eric Niemann, Mayor, City of Philomath
Shelley Niemann, Philomath School Board Vice Chair
Dan Rayfield, State Representative
Anne Schuster; Mayor Biff Traber
Nancy Wyse, Corvallis City Councilor

www.electxan.com

(This information furnished by Xan Augerot for Commissioner)



Benton County
Commissioner
Position 2
Republican

Tom
Cordier

Occupation: Retired

Occupational Background: Specialty Metals Manufacturing

Educational Background: NY State HS-- Regents Diploma; Hudson Valley CC, AS, Troy, NY; Rensselaer Polytechnic Institute, BS Materials Eng. Troy, NY

Prior Governmental Experience: Served on several Albany City and public-- school committees. Successfully led two Initiative Petitions to change Albany's Charter which now Requires voter approval **before** City Council approves more Debt and **before** City Council increases the scope of the Urban Renewal District or create another URD. Honorable discharged after 4 years USAF, ADC radar tech

My family (wife and 4 children) moved to Albany, Linn County in 1970 to work for Wah Chang as a Process Engineer.

Management promotions followed to Division Director Melting, VP Technology with significant Environmental Superfund responsibilities. Then VP of Sales and Marketing with P&L and business plan responsibilities. Retirement came after 28 years with 10 yr as an Company Officer..

In 1994 wife Patricia and I moved to North Albany, Benton County

I am a candidate for this position because I find local governments are terribly poor cost managers. They use the drip-by-drip method in increasing fees and "service" rates—they manage income and they never reduce costs the way a for-profit business enterprises does. I'm seeking an opportunity to inoculate Benton County with the model of "doing more with less". The Commissioners must address the lack of public safety—both pedestrian/traffic and inadequate jail space costs.

Policies

I will vote against the burden of increasing taxes, fees and service costs w/o a "true cost" analysis

The budgeting process itself is flawed since it starts with the false assumption that we must have existing headcount.

I will vote against the "emergency clause" on every ordinance. That trick removes the process for voters to redress unpopular decisions.

(This information furnished by Tom Cordier)



Benton County
Commissioner
Position 3
Democrat

**Nancy V
Wyse**

Occupation: Administrative Analyst

Occupational Background: Sales; Resident Management
Educational Background: Oregon State University, General Science

Prior Governmental Experience: Current: Corvallis City Council, Vice President; Corvallis Budget Commission, Vice Chair; South Corvallis Urban Renewal Agency, Vice Chair; Benton County Planning Commission; Benton County Budget Committee; League of Oregon Cities Telecom, Cable & Broadband Policy Committee; 2020 Census Complete Count Committee; Benton County Democrats Elected Precinct Committee Person. Current liaison positions: Corvallis-Benton County Economic Development Advisory Board; Corvallis Chamber of Commerce; Economic Vitality Partnership

Past: South Corvallis Urban Renewal Advisory Committee; Land Development Code Audit Advisory Committee. Liaison positions: Parks, Natural Areas, & Recreation Advisory Board; Historic Resources Commission; Downtown Advisory Board; Downtown Parking Committee

Core goals:

- Improve public records access and transparency.
- Prudent steps forward on the criminal justice implementation plan.
- Protect Forest Conservation, Multi-Purpose Agriculture, and Open Space zones.
- Support emergency preparedness activities and planning.

Endorsements:

- Oregon League of Conservation Voters
- Senator Sara Gelsler; Representative Dan Rayfield
- Commissioners: Annabelle Jaramillo; Xan Augerot; Pat Malone
- Corvallis Mayor Biff Traber
- Corvallis City Councilors: Hyatt Lytle, President; Ed Junkins; Charles Maughan; Jan Napack; Andrew Struthers
- Philomath Mayor Eric Niemann
- David M. Low, Philomath Council President
- Corvallis School Board Members: Sami Al-Abdrabbuh, Chair; Sarah Finger McDonald, Vice Chair; Vincent Adams
- James Brewer; Cindy Dahl; Gabe Shepherd; Stewart Wershow; Curtis Wright; Penny York; Gordon Zimmerman
- And more!

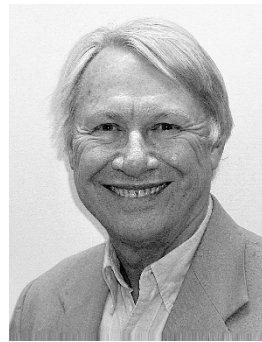
My motivation in running for commissioner stems from my love of our community and my desire to see the best version of Benton County possible. I believe I have a lot to offer: new energy and a fresh perspective backed by my unique experience in local government. I am committed to making mindful, balanced decisions for Benton County and I will diligently work to see that our community is an inclusive, vibrant, healthy place for all.

Contact Nancy:

nancywyseforbentoncounty@gmail.com

www.Facebook.com/NancyWyseBentonCo

(This information furnished by Elect Nancy Wyse)



Benton County
Commissioner
Position 3
Republican

**John E
Sarna**

Occupation: (retired) Civil Engineer

Occupational Background: Senior Water Resources Engineer & Water Resources Control Engineer with the State of California, Dept of Water Resources and Water Resources Control Board (1985-2011); Systems Engineer with Motorola GeG Division (1979-83); Computer Specialist (1975-76), and Combat Infantryman with the U.S. Army in Viet Nam (1969-70)

Educational Background: Doctor of Environmental Science and Engineering (UCLA, 1990); MS in Electrical and Computer Engineering (University of Massachusetts, 1979); BS (University of Illinois, 1974); currently taking classes at LBCC and OSU

Prior Governmental Experience: One term on Benton County Environmental Issues Advisory Committee

Volunteer Experience: Member of the local "Community Emergency Response Team" (last job was assisting at DaVinci Days) and Republic Service's "Master Recycler Program" (last job was servicing electronics at the OSU Repair Fair); also co-founder (and still on Executive Committee) of "Western States Climbers"

Endorsed by: Julia Wegner, Chair of Benton County Republicans

Blended Family: My wife, April, is a veterinarian and all four of our kids attended CVHS

As your Commissioner, I would:

- always welcome feedback and promote public discussion of controversial issues, attempting to reach consensus, if possible, using my experience, people and negotiation skills
- take the time necessary to consider all viewpoints, before making good practical decisions based on what's best for the County and its residents
- not shirk from contentious choices, such as supporting the Commissioners prior decision to opt into the Linn County Timber Lawsuit, since it's a question of contract law, opting out would have reduced the State's obligation by less than 1%, but the Gazette estimated Benton County would get about \$6,700,000; that may be used to defer some taxes or fees
- promote and support Benton County's 2040 Thriving Communities Initiative, and recognizing an increasing need for "Community Resilience," first focusing on ensuring "Communities & Individuals are Prepared to Respond to & Recover from Natural & Human Caused Disasters, Threats, & Changes"

(This information furnished by John Sarna)

City of Adair Village Measure 2-125

No Arguments For or Against
This Measure Were Filed

Ballot Title

Caption: Adopts Revised Adair Village Charter

Question: Shall Adair Village amend its Charter creating wards and increasing residency requirements for elected officials?

Summary: This measure revises the Adair Village City Charter. The Charter serves as the City's Constitution that outlines the form, functions, responsibilities and authority of municipal government. Adair Village was incorporated in 1976. Its Charter was last revised in 2000. In late 2019, the Mayor and City Council asked the City Attorney and City Administrator to review existing Charter language for compliance with current Oregon laws. Additionally, staff was asked to provide a process for creating wards within the City and increasing the residency requirements for elected officials to mirror state law.

Explanatory Statement

The measure, if approved, would amend the Charter of the City of Adair Village. The City Charter establishes the structure of City government and defines the powers and responsibilities of the City Council and City Officers. The provisions of the Charter can be amended, but only with the approval of a valid measure by the City's voters at an election.

The proposed measure up for voter consideration would create four separate wards within the City limits based on equal population as can be conveniently provided. The territory comprising each ward would be contiguous. The boundaries will be established and changed by ordinance. The boundaries shall be changed whenever the population in any ward, as determined by the last preceding national census of the Bureau of the Census of the United States Department of Commerce, exceeds the population in any other ward by more than 10 percent. The boundaries may be changed to include territory that has been annexed, or whenever the population in any ward exceeds the population in another ward by more than 10 percent as determined by any measure that is found reliable by the City Council. Each ward will be represented by one councilor residing in that ward. The mayor may reside in any ward. At the time of enactment, any then sitting councilor shall be able to retain their position regardless of their ward until they are defeated in an election, resign or fail to run for re-election.

If passed, this measure would also increase the residency requirement for a person to hold elective office from 180 days to 365 days. This would put the City in line with Oregon Revised Statutes regarding eligibility to hold a county elective office.

If approved, the measure would take effect on July 1, 2020.

(Submitted by City of Adair Village)

City of Albany Measure 22-181

Ballot Title

Caption: Renewal of the Ambulance, Fire, and Police Local Option Tax

Question: Shall Albany continue \$1.15 per \$1,000.00 of assessed value for ambulance, fire, police operations for five more years beginning 2021-2022? This measure renews current local option taxes.

Summary: The City will use tax revenue from this measure to continue funding for firefighter/emergency medical technicians, deputy fire marshal and emergency services positions, police officers, police clerks, community service officers, and telecommunications and crime analyst positions, together with related equipment and training. Taxes will also continue to be used to pay operating costs for the fire and police departments. The levy continues the rate previously approved by voters in 2016.

The proposed rate will raise approximately \$4,400,456.00 in 2021-2022; \$4,532,470.00 in 2022-2023; \$4,668,444.00 in 2023-2024; \$4,808,497.00 in 2024-2025; and \$4,952,752.00 in 2025-2026, for a total of \$23,362,619.00.

The estimated tax cost for this measure is an ESTIMATE ONLY based on the best information available from the county assessor at the time of estimate and may reflect the impact of early payment discounts, compression and the collection rate.

Explanatory Statement

The City will use tax revenue from this measure to continue funding for firefighter/emergency medical technicians, deputy fire marshal and emergency services positions, police officers, police clerks, community service officers, and telecommunications and crime analyst positions, together with related equipment and training. Taxes will also continue to be used to pay operating costs for the fire and police departments. The levy continues the rate previously approved by voters in 2016.

The proposed rate will raise approximately \$4,400,456.00 in 2021-2022; \$4,532,470.00 in 2022-2023; \$4,668,444.00 in 2023-2024; \$4,808,497.00 in 2024-2025; and \$4,952,752.00 in 2025-2026, for a total of \$23,362,619.00.

The estimated tax cost for this measure is an ESTIMATE ONLY based on the best information available from the county assessor at the time of estimate and may reflect the impact of early payment discounts, compression and the collection rate.

(Submitted by City of Albany)

No Arguments Against
This Measure Were Filed

City of Albany Measure 22-181 Argument For:

**Citizens for a Safer Albany
Vote Yes on 22-181 to
RENEW**

**Albany's Ambulance, Fire,
& Police Levy**

**This ballot question is for a
continuing levy and will not cost you
more money.**

In 2002, the voters of Albany approved a levy to add critical fire and police positions to improve our level of public safety services. This levy has been renewed three times.

**This levy is for the continuance of an existing tax.
State law only allows levies for a maximum five
years and they must be renewed by the voters each
time to continue the levies.**

The approval of this levy is vital to Albany's ambulance, fire and police services.
Without this levy, positions would be
eliminated.

**This levy is to retain Albany's current
ambulance, fire and police services.**

"Vote "Yes" to RENEW Albany's Fire, Ambulance, and Police Levy. This is an existing tax that currently funds almost 20 Fire and Police positions. Eliminating these positions would seriously impact public safety in Albany. Join me and vote "Yes" to support our public safety!"

--Mario Lattanzio, Retired Albany Police Chief

"As recent events have demonstrated, continued reliance on our emergency services is critical to our individual and community needs. Join me in continuing to support our Albany's Police and Fire Departments."

--Floyd Collins, 48 year resident of North Albany.

**Citizens for a Safer Albany was formed
In 2002 by volunteers
to campaign for your community's safety.
This measure is to continue this level of service.**

(This information furnished by Citizens for a Safer Albany, PAC)

The printing of this argument does not constitute an endorsement by Benton County, nor does the county warrant the accuracy or truth of any statement made in the argument. ORS 251.355

Lane Community College Measure 20-306

Ballot Title

Caption: Bonds to Construct, Improve Facilities, Address Safety and Technology Needs

Question: Shall Lane Community College increase safety; repair, construct and improve facilities; update technology; issue bonds not exceeding \$121.5 million? If the bonds are approved, they will be payable from taxes on property or property ownership that are not subject to the limits of sections 11 and 11b, Article XI of the Oregon Constitution.

Summary: The Lane Community College Board proposes this measure to increase safety, repair and construct labs for job training, extend life of aging facilities, update technology and finance capital costs to support student learning.

The College has been awarded \$8,000,000 in state funds only available if the bonds are approved.

If approved, this measure is expected to include the following projects:

- District-wide earthquake and safety upgrades
- Update Science labs and modernize Math, Arts and Engineering spaces
- Create Workforce Development Center
- Construct building for expanded Health Professions programs and Dental Clinic
- Expand Manufacturing and Technology Programs
- Create mobile manufacturing/welding lab
- Build Cybersecurity Program lab
- Related site improvements, equipment, furnishings and costs of issuance

Bonds would mature in not to exceed 20 years from issuance and may be issued in series. The incremental increase in the levy rate is estimated to be \$0.12 per thousand of assessed property value. Actual levy rate may differ due to changes in interest rates and assessed values.

Explanatory Statement

The Lane Community College Board is asking voters in its service area to consider a \$121.5 million bond measure that, if approved, would fund safety and security updates, seismic retrofitting, expand Health Professions and Workforce Training Programs, and modernize classroom technology throughout the district.

In an effort to identify structural and programmatic projects and address deferred maintenance, the college recently completed a facilities master plan. This multi-year effort involved the LCC Board, campus community and members from local businesses to help determine how to address safety and security on campus, as well as update learning spaces. To help offset the cost of items identified in the plan, LCC's Board decided to refer the bond measure to voters. If approved, bond dollars would be used to address the following priorities within the master plan:

Safety, security, and accessibility

LCC would use bond dollars to address safety projects identified in the facilities plan. Some LCC buildings are more than 50 years old and are seismically and structurally not up to code. If approved, bond funds would be used to reconstruct or retrofit aging facilities, make buildings and walkways more accessible, and add classroom safety features.

Workforce retraining and career technical education

LCC offers education, training, partnerships and local opportunities for Career Technical Education (CTE) and workforce training and retraining. Bond dollars would provide updated learning spaces and technology for several programs, including Advanced Technology and Cybersecurity. In addition, the college would qualify for a matching \$8 million state grant to construct a new building to allow for expansion of Health Professions programs and LCC's Dental Clinic.

Student focused

Currently, LCC uses general fund dollars to make facility improvements. If approved by voters, bond funds would be used for facility improvements, allowing remaining resources to be invested in education efforts. A voter-approved bond measure would help the school avoid or delay increasing the cost of tuition.

Cost

If passed, LCC's bond measure is estimated to increase property taxes \$0.12 per \$1,000 of assessed value, to a rate of \$0.34 per \$1,000 of assessed value for Lane Community College bond debt. Property taxes are expected to increase by about \$3.00 a month or \$36 a year for a property assessed at \$300,000.

If the bond does not pass, the safety, infrastructure enhancement and modernization projects could not be completed. The property tax increase would not occur. LCC would not receive the proposed bond funds nor the \$8 million in committed state funds. Repairs, maintenance and technology upgrades would be budgeted through the general fund, potentially resulting in higher tuition rates for students.

Accountability

An independent group of citizens from the community will review quarterly reports and audits of how the bond dollars are being spent to provide accountability to the public until construction is complete.

(Submitted by Lane Community College)

**No Arguments For or Against
This Measure Were Filed**

The candidate and measure information within this pamphlet is provided by candidates, cities, districts and other interested parties that chose to participate in this portion of the election process. Candidate statements and measure arguments are optional filings.



Please Note: Ballots must be received at an official ballot drop site or an Elections Office in Oregon by 8:00 PM on Tuesday, May 19, 2020.

Registering to Vote

To vote in Oregon you need to be registered in the county where you reside.

You can register if you can answer yes to these three questions:

- Are you a resident of Oregon?
- Are you a US citizen?
- Are you at least 16 years of age?

If you are 16 or 17 years of age, you will not receive a ballot until an election occurs on or after your 18th birthday.

How to register

You can register to vote online at www.oregonvotes.gov or you can get a voter registration card at any of the following places:

- Benton County Elections Office
- any county elections office
- the Secretary of State's Office
- some state agencies such as the Division of Motor Vehicles (DMV)
- a voter registration drive

You can fill the form out in person or send it in by US mail. You can also print out a registration form online at:

www.oregonvotes.gov.

What information is required to register?

To complete your registration you will provide your:

- full legal name
- home address
- date of birth
- signature
- valid identification

Updating your voter registration

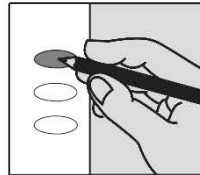
Once you have registered, you are responsible for keeping your information up to date. You can do this online at www.oregonvotes.gov or by completing and returning a voter registration form with the new information. You should update your registration if you do any of the following:

- change your home address
- change your mailing address
- change your name
- change your signature
- want to change or select a political party
- will be away from home on election day

How to Cast Your Ballot

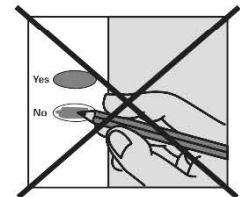
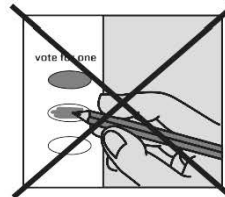
check your ballot!

Use a black or blue pen to fill in the ovals next to your choices.



If you vote for more candidates than allowed, or if you vote **both Yes and No** on a measure, it is called an overvote.

Your vote **will not count** for that candidate or measure.



You do not have to vote on all contests. Those you do vote on will still count.

Contact Benton County Elections to request a replacement ballot if:

- you make a mistake
- your ballot is damaged or spoiled
- you lose your ballot

Benton County Elections

Phone: (541) 766-6756

Fax: (541) 766-6757

TTY: (800) 735-2900

Email: elections@co.benton.or.us

1 866 ORE VOTE/673 8683

Se Habla Español

www.oregonvotes.gov



Use online voter resources to register or update your registration status. oregonvotes.gov

qualifications

Are you a citizen of the United States of America? yes no

Are you at least 16 years of age? yes no

If you mark no in response to either of these questions, do not complete this form.

personal information *required information

last name* first* middle

Oregon residence address (include apt. or space number)* city* zip code*

date of birth (month/day/year)* county of residence

phone email

mailing address (required if different than residence) city zip code

Oregon Driver's License/ID number

Provide a valid **Oregon Driver's License, Permit or ID:**

I do not have a valid **Oregon Driver's License/Permit/ID**. The last 4 digits of my Social Security Number (SSN) are:

x x x - x x -

I do not have a valid Oregon Driver's License/ID or a SSN. I have attached a copy of **acceptable identification**.

political party

Not a member of a party

Constitution

Democratic

Independent

Libertarian

Pacific Green

Progressive

Republican

Working Families

Other _____

signature I swear or affirm that I am qualified to be an elector and I have told the truth on this registration.

sign here _____ date today _____

! If you sign this card and know it to be false, you can be fined up to \$125,000 and/or imprisoned for up to 5 years.

registration updates Complete this section if you are updating your information.

previous registration name previous county and state

home address on previous registration date of birth (month/day/year)

BENTON COUNTY OFFICIAL BALLOT DROP SITES

BENTON COUNTY ELECTIONS & PASSPORTS OFFICE

Basement of County Courthouse
120 NW 4th St Rm 13, Corvallis OR 97330
541-766-6756
Mon thru Fri 8:00 am to 5:00 pm
Election Day 7:00 am to 8:00 pm

24-HOUR OUTDOOR BALLOT DROP BOXES

BENTON COUNTY COURTHOUSE

Courthouse lawn on Fourth Street
120 NW 4th St, Corvallis OR 97330

BENTON COUNTY COURTHOUSE

Accessible entrance on Fifth Street
120 NW 4th St, Corvallis OR 97330

BENTON COUNTY COURTHOUSE

Across the street on Fifth Street
180 NW 5th St, Corvallis OR 97330

WELLS FARGO BANK

Timberhill Shopping Center
2543 NW Kings Blvd, Corvallis OR 97330

BENTON COUNTY SUNSET BUILDING

Drop box in parking lot
4077 SW Research Way, Corvallis OR 97333

ADAIR VILLAGE CITY HALL

Drop box in front of City Hall parking lot
6030 NE William R Carr Ave
Adair Village OR 97330

LINCOLN HEALTH CENTER

Drop box in parking lot
121 SE Viewmont Ave, Corvallis OR 97333

MONROE COMMUNITY LIBRARY

Drop box in parking lot
380 N 5th St, Monroe OR 97456

NORTH ALBANY SHOPPING CENTER

Drop box in front of IGA Supermarket
621 Hickory Ave NW, Albany OR 97321

PHILOMATH PUBLIC LIBRARY

Drop box near main entrance
1050 Applegate St, Philomath OR 97370

INDOOR BALLOT DROP BOXES

PLEASE NOTE: The COVID-19 pandemic may affect the access, hours, and availability of the indoor ballot drop boxes in the locations below.

CORVALLIS PUBLIC LIBRARY

645 NW Monroe Ave, Corvallis OR 97330
541-766-6793

Mon thru Thu 10:00 am to 8:00 pm

Fri thru Sat 10:00 am to 6:00 pm

Sun 1:00 pm to 5:00 pm

*** As of March 25, 2020, the Corvallis Public Library is scheduled to reopen on April 29, 2020 ***

OSU VALLEY LIBRARY

121 The Valley Library, Corvallis OR 97331
541-737-3331

*** CLOSED ***

LBCC BENTON CENTER

757 NW Polk Ave, Corvallis OR 97330
541-757-8944

*** CLOSED ***

CITY LIMITS MARKET

5800 NW Hwy 99W, Corvallis OR 97330
541-745-7194

Mon thru Thu 6:30 am to 8:00 pm

Fri 6:30 am to 8:30 pm

Sat 8:00 am to 8:30 pm

Sun 10:00 am to 8:00 pm

JOHN BOY'S ALSEA MERCANTILE STORE

186 E Main St, Alsea OR 97324
541-487-4462

Mon thru Sun 8:00 am to 6:00 pm

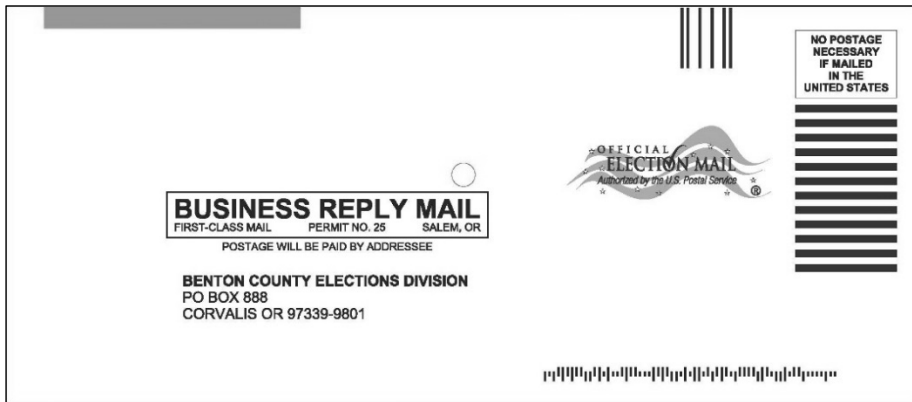
NEW! Prepaid Postage Ballot Return Envelope

With prepaid postage, you no longer have to search for a stamp to mail your voted ballot. Beginning this year, all ballots in Oregon will be sent to voters with a prepaid postage return envelope.

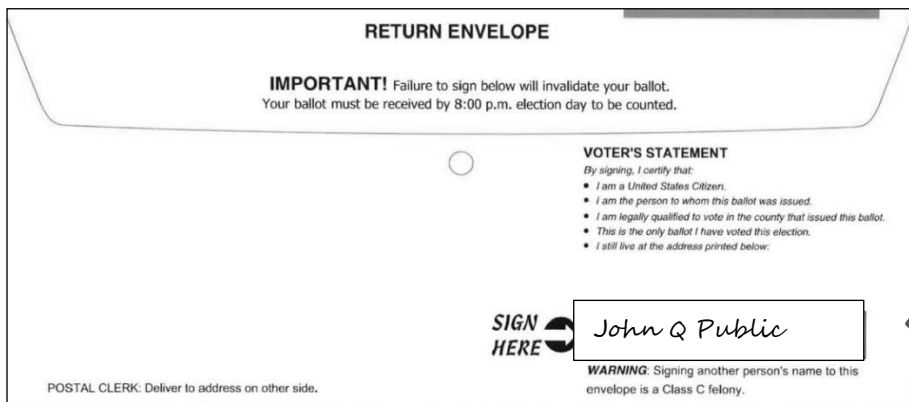
When you mail back your voted ballot, the Post Office will charge the State of Oregon for each ballot sent back to an Elections Office. Only ballots sent back through the mail will be charged to the State.

Important notice: Postmarks **do not** count for ballots in Oregon. If we have not received your ballot by 8:00 PM on Election night, your vote **will not count**.

Do not return your ballot by mail after May 12th, 2020, to ensure receipt at the Elections Office by the 8:00 PM May 19th, 2020 deadline. After May 12th, 2020, we recommend using one of our many Official Ballot Drop Sites located throughout the county that are listed on page 12 in this pamphlet.



Please remember to sign your ballot return envelope.



Benton Better Ballot Ranked Choice Voting for County Commissioner Frequently Asked Questions

When you receive your General Election ballot later this year, you may notice a change. The Benton County Commissioner contests will be elected by Ranked Choice Voting if three or more candidates are nominated. Here's what you need to know:

What is Ranked Choice Voting?

Ranked Choice Voting (RCV) is a new contest format where voters rank candidates instead of choosing just one.

Why change the system, and why change it now?

In November 2016, a majority of Benton County voters chose to amend the County Charter to elect county officials using RCV. The November 2020 General Election, may be the first election in which voters cast their vote in a contest using RCV. Ranked Choice Voting is only used when a minimum of three candidates are nominated for the countywide office in the General Election.

Will Ranked Choice Voting (RCV) be used in all County elections?

No. RCV will be used only for county elected officials submitted to voters in general elections; not for party primaries. Currently, the only countywide elected offices are the County Commissioners and the County Sheriff. **Please Note:** The Sheriff's office is a non-partisan office that nominates no more than two candidates for the General Election Ballot. Therefore, the Sheriff position will NOT be elected using RCV.

How do I cast my vote in a Ranked Choice contest?

Ranked Choice Voting is easy! Instead of choosing just one candidate, use your ballot to rank your top three candidates, from your first choice to your second and third choices. Find the name of your first choice candidate and completely fill in the oval next to their name in the "1st Choice" column. Then find the name of your second choice, and fill in the oval next to their name in the "2nd Choice" column. Finally, find the name of your third choice, and fill in the oval next to their name in the "3rd Choice" column. **Please Note:** You can use the Write-In space to enter a candidate's name that is NOT on the ballot that you would like to select for your 1st, 2nd or 3rd Choice in the RCV contest.

What if I don't want to rank candidates for all three choices?

We encourage voters to rank the full range of candidates. If you choose not to, your ranked vote may not be counted in later rounds if your top candidate(s) are eliminated and the lower choice position(s) are left blank. These are called "Exhausted Votes".

Does my vote get counted if I rank my favorite choice in every position?

Your vote will count only once for that candidate and will not help your candidate's chances of winning. If voting goes to later rounds because your 1st Choice candidate has been eliminated, your ballot will be nullified and counted as an "Exhausted Vote". This is because your subsequent choice(s) would not be attributable to a remaining candidate.

Can I give different candidates the same ranking?

No. When the ballot counter reads multiple candidates within the ranked choice being tallied, that vote is nullified and tallied as an "Over Vote".

What happens if I make a mistake with my ballot?

Mistakes happen, so if you make one, don't be shy! Call the County Clerk's Elections office at 541.766.6756 and we will be happy to help and get you a replacement ballot, if needed.

How are ranked choice ballots counted?

To win a ranked choice election, a candidate must receive 50%, plus one vote of total votes cast for that office.

When all ballots have been processed, counters will tally first choice votes. If no candidate receives a 50% plus one majority of the total first choice votes cast the candidate with the lowest number of first choice votes is eliminated and the second choice candidate votes on those ballots are tallied.

Votes are recalculated and if one candidate achieves a 50% plus one majority, they are declared the winner. If not, we repeat the process. The candidate in last place is eliminated and the next choice candidate votes on those ballots are tallied. If the next choice on those ballots has already been eliminated, the subsequent choice is counted and so on until the ballot is exhausted or a winner has been determined. The process is repeated until one candidate reaches a 50% plus one majority and is declared the winner.

What County Commissioner contest results will we see ON election night?

The Election Office will release ONLY the first choice ranking results for County Commissioner after 8:00 pm on election night. These unofficial first choice ranking results will be updated along with the other contest results including the final Unofficial Election Night results. We cannot announce a tentative winner as all votes must be tallied, including Benton County ballots returned in other Oregon counties and after the 14-day ballot challenge/resolution period has past. Following the challenge period, the county must certify the election results no later than the 20th day after the election date.

If the race is not close, we may have a good idea who likely won on election night. This is not a big difference compared to previous elections. How many times have we gone to bed on election night thinking a particular candidate or ballot measure was winning or losing in a close race, only to find after all ballots are counted that the outcome had changed? Ranked Choice Voting results are no different. If the race is close, final determination will depend on the counting of ballots returned in another Oregon county, as well as, challenged and provisional ballots all being included in the final contest results.

What County Commissioner contest results will we see AFTER election night?

After the 14-day challenge period has past and all accepted ballots are tallied, if a candidate listed on the ballot or Write-In candidate receives more than half of the first-choice votes cast (50% plus one), that candidate will be announced as the unofficial winner.

If no candidate receives more than 50% of the votes, vote tallies will continue. The candidate with the fewest first choice votes is defeated. Next, the votes cast for the defeated candidate are then recast for the next choice remaining candidate selected on those ballots; or until the vote is nullified, if no subsequent choice is for a remaining candidate.

This process continues until a candidate has received more than half of the votes cast or only two candidates remain. If two candidates remain, the candidate with the most votes is declared the unofficial winner. The official winner will only be declared when the results are certified.

Round-by-Round Vote Totals:

A report containing round-by-round contest results for County Commissioner positions will be displayed at www.co.benton.or.us/elections and www.BentonBetterBallot.com after the challenge period has past and the returns are certified.

When will the final CERTIFIED election results be available?

Benton County can only certify election results after the 14-day ballot challenge/resolution period has past and no later than the 20th day following the election.

Ranked Choice Voting is easy, but change can be hard – if you have questions, we are here to get you answers! Elections are the heart of our democracy. Thank you for your patience as we all work to make this election a success!

The Benton Better Ballot campaign uses five Pacific Northwest inspired animals as mock candidates to illustrate the Ranked Choice Voting process.

Sally Salmon Bill Beaver Frieda Tree Frog Olivia Otter Santiago Sturgeon

	1st CHOICE	2nd CHOICE	3rd CHOICE
Sally Salmon	<input type="radio"/>	<input type="radio"/>	<input type="radio"/>
Bill Beaver	<input type="radio"/>	<input type="radio"/>	<input type="radio"/>
Frieda Tree Frog	<input type="radio"/>	<input type="radio"/>	<input type="radio"/>
Olivia Otter	<input type="radio"/>	<input type="radio"/>	<input type="radio"/>
Santiago Sturgeon	<input type="radio"/>	<input type="radio"/>	<input type="radio"/>
Write-in	<input type="radio"/>	<input type="radio"/>	<input type="radio"/>

mock election practice ballot

To access a practice RCV contest, instructional video, additional information resources and more, go to:

BentonBetterBallot.com

Follow us on Facebook, Twitter and Instagram at @BentonCoGov for videos, resources, and practice ballots!

Talk to a real-live person to get your questions answered: (541) 766-6756.

**OFFICIAL BENTON COUNTY
VOTERS' PAMPHLET
MAY 19, 2020 PRIMARY ELECTION**



**THIS CONCLUDES THE BENTON COUNTY
PORTION OF THE VOTERS' PAMPHLET**