



**Benton
County**

OREGON

**OFFICIAL
VOTERS' PAMPHLET**

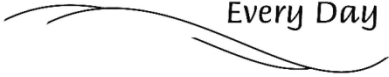
**SPECIAL ELECTION
MAY 18, 2021**

The publication and distribution of this pamphlet is coordinated by the County Clerk. The candidate and measure information within was provided by candidates, districts and other interested parties that chose to participate in this portion of the election process.

Benton County:

At Your Service

Every Day





**Benton
County**
**BOARD OF
COMMISSIONERS**

Board of Commissioners

Office: (541) 766-6800
Fax: (541) 766-6893

205 NW 5th St.
PO Box 3020
Corvallis, OR 97339-3020

co.benton.or.us/boc

Dear Benton County Voter:

On **Tuesday, May 18, 2021**, a **Special District Election** will be held in Benton County. As a registered voter, you have the opportunity to exercise your right to vote on local elected officials. Additionally, all Benton County voters will consider renewal of the county public health and safety services levy.

The county publishes Voters' Pamphlets to provide local candidates with the opportunity to share their messages and views with voters. This pamphlet also provides our community with the opportunity to submit arguments in support of or in opposition to local measures. An electronic version of this pamphlet is available on the County Clerk's website www.co.benton.or.us/elections.

Please note, **all ballots must be received at an official ballot drop site in Oregon before 8:00 PM on Election Day, Tuesday, May 18, 2021**. You can mail your ballot, or drop it at one of the official ballot drop box locations listed in this pamphlet and on our website. If you need additional information or assistance, you may reach the Elections Office by phone: (541) 766-6756; email: elections@co.benton.or.us; or in-person in the basement of the historic Benton County Courthouse, 120 NW 4th Street, Room 13, in Corvallis.

We hope this information will help you become better informed about the measure and candidates you are presented with in this election.

Sincerely,



Xanthippe Augerot

Chair



Nancy V. Wyse

Vice-Chair



Pat Malone

Commissioner

TABLE OF CONTENTS

2	Letter from the Commissioners
3	Table of Contents
4	Information
	Linn-Benton Community College
5	Director Zone 5 - John Sarna and Brad Longman
	Corvallis School District 509J
6	Director Position 1 - Bryce Cleary and Sami Al-Abdrabbuh
7	Director Position 4 - Luhui Whitebear and Richard Arnold
8	Director Position 5 - Shauna Tominey and Rachelle Spindler
9	Director Position 5 - Ginger Schudel Larcom
10	Director Position 6 - Tim Euhus and Vince Adams
	Greater Albany Public School District 8J
11	Director Zone 1 - Brad Wilson and Clarice Law
12	Director Zone 2 - Willard Sheppy and Roger Nyquist
13	Director At-Large #2 - Pete J Morse and Denee Newton-Vasquez
	Monroe School District 1J
14	Director Zone 1 - Sarah M Fay and Director Zone 5 - Chris R Irwin
	Philomath School District 17J
16	Director Position 3 - Joe Dealy and Brittany Kennedy
17	Director Position 3 - Abigail Kurfman
18	Director Position 4 - Joey McGlinchy and Erin Gudge
	Corvallis Rural Fire Protection District
19	Director Position 1 - Tony O'Donahue
	Philomath Fire and Rescue
20	Director Position 2 - Ken Corbin and Director Position 3 - Doug Edmonds
21	Benton County Measure 2-130 Renew Levy for Health and Safety Services
22 - 25	Arguments For Measure 2-130
26	Registering to Vote
27	Voter Registration Form
28	Absentee Application Form
29	How to Cast a Ballot
30	Prepaid Postage
31	Official Ballot Drop Sites

Information provided in statements or arguments submitted by a candidate, a political party, an assembly of electors or a person supporting or opposing a measure have not been verified for accuracy or truth and do not constitute an endorsement by Benton County.

Benton County Elections & Passports Office

Phone: 541-766-6756

Fax: 541-766-6757

Website: www.co.benton.or.us/elections

E-mail: elections@co.benton.or.us

Information

This voters' pamphlet includes district positions throughout all of Benton County. When you receive your ballot, you will see candidates and measures that represent the districts in which you reside.

Not all candidates in this pamphlet will show on your specific ballot. Additionally, you will only see measures that apply to your residence.

The information within this pamphlet is provided by candidates, districts and other interested parties that chose to participate in this portion of the election process.





**Linn-Benton
Community
College**
Director
Zone 5

**John
Sarna**

Occupation: Civil Engineer (retired)

Occupational Background: Civil Engineer in State government specializing in water resources and water quality (26 years); Systems Engineer for Motorola; Computer Specialist for Allstate Insurance

Educational Background: Doctor of Environmental Science and Engineering (UCLA, 1990); MS in Electrical and Computer Engineering (University of Massachusetts, 1979); BS (University of Illinois, 1974); still taking classes of general interest at LBCC (Benton Center) and OSU

Prior Governmental Experience: Benton County Environmental Issues Advisory Committee (appointed)

Current Community Involvement: Member of Community Emergency Response Team; Philomath Lyons Club; Mary's River Grange; CJSI Community Advisory Committee, and Republic Service's Master Recycler Program.

Why I'm here: I strongly believe that community colleges are a foundational piece of our higher education system. They are the rock on which many build a solid career and provide continued learning opportunities for people all ages and life-experience. Having attended four such institutions, including LBCC for the past several years, I can attest to their benefits for life-long learning. LBCC also provided a most positive experience for my son John to transfer with a scholarship to OIT and allowed all my kids the opportunity to obtain LBCC credits while in high school. I ask you allow me to use the experience I have gained through higher education to help benefit future students.

If elected, I will work to:

- Bring back in-person classes in a post-COVID safe environment.
- Make LBCC inclusive and accessible to everyone, providing prerequisites that allow each student to be successful
- Ensure LBCC classes are transferable to OSU and other 4-year colleges
- Expand and improve career technical education programs
- Promote continuing education and other extended learning classes
- Provide outreach to rural communities, with on-line access where attendance is infeasible
- Maintain high school partnership programs, improving outreach and providing seniors with no-cost access to college level classes
- Keep tuition low and LBCC financially solvent while growing to serve this vibrant community

(This information furnished by John Sarna)



**Linn-Benton
Community
College**
Director
Zone 5

**Brad
Longman**

Occupation: Project Manager, U.S. President's Malaria Initiative, Abt Associates Inc.

Occupational Background: Brad Longman manages global health programs funded by CDC, U.S. Department of State, and private donors. After living and working in Kenya as the U.S. government's lead project manager for malaria control programs, he moved to Corvallis in 2018.

Educational Background: M.B.A. Johns Hopkins University; B.A. University of Virginia

Prior Governmental Experience: Corvallis Rural Fire Protection District (CRFPD), Budget Committee Member

Optional Information:

I am running for LBCC's Board of Directors for two reasons:

- 1) To guide decision making at our local community college; and
- 2) To lead our community's conversations about how we educate our workforce.

I believe in LBCC's power to equip students with the skills they need to succeed in our local economy. Unlike alternatives in Corvallis, Monmouth, and Eugene, I don't believe students need to be saddled with tens of thousands of dollars in debt to start a career!

I want to see LBCC emphasize trade skills and vocational programs, small business start-up expertise, healthcare and other industries in our area. Growing up in a working class background, I have experienced this type of education's growth in my own life.

LBCC has an important role to play in bridging our public high schools and the workforce. With the right leadership, LBCC can and should equip every graduate with the skills necessary to secure **living wage jobs** without a student debt burden.

In the absence of clear vision and opportunities, jobs disappear, local resources become overtaxed, and our community suffers. We are already seeing these consequences felt across our community in the forms of mass youth unemployment and political unrest.

We are living through a time of unprecedented change, but together this change is our opportunity to build a **sustainable economy** and healthy society for a better future!

Thank you for considering my perspectives. Whatever you do, please vote!

(This information furnished by Brad Longman)



**Corvallis School
District 509J**
Director
Position 1

**Bryce
Cleary**

Occupation: Physician

Occupational Background: Chief Resident

Educational Background: CVHS; OSU; OHSU; UW (Residency)

Prior Governmental Experience: US Army (Captain)

Other: Volunteer Community Outreach Physician; Volunteer High School Team Physician; Volunteer Physician (Ghana); Volunteer Teacher (Uganda); Volunteer Speaker Corvallis Schools; Many years coaching youth sports.

Our children deserve better!

Our children are suffering unprecedented levels of depression, anxiety, and isolation. As a physician, I have seen far too much of this first hand. So what has our School Board been doing?

Pushing political agendas and furthering their personal aspirations. This has got to stop.

I want to give back.

I am the son of a Corvallis teacher, a Crescent Valley graduate, a father of CV and CHS graduates, and a proud grandfather of a Corvallis elementary student. I care deeply about our schools.

Get kids safely back in school and keep them in school

Our School Board has been slow to act and will be quick to panic. I have the medical background and the courageous leadership to follow the science and do the right thing. Minority students are most severely affected by closures. Extracurricular activities are crucial to all students- we must safely get them back.

Everyone needs a voice.

Parents have rights. Teachers, staff, and administrators need to be supported and all voices need to be heard. Minority students, students with disabilities, and students with special needs will have a strong advocate if I am on the School Board.

Kids are my agenda.

My only agenda is to help each and every child in the Corvallis School District. I am not seeking political office. I don't have a PAC and won't ask anyone for money or endorsements. I am asking anyone who cares more about kids than politics to honor me with your vote. Thank you!

For more info please go to: clearyforcorvallis.com

(This information furnished by Bryce Cleary)



**Corvallis School
District 509J**
Director
Position 1

**Sami
Al-Abdrabbuh**

Occupation: School Board chair; Researcher

Occupational Background: College Instructor; Student Leadership Development; Project Engineer

Educational Background: PhD & MS Industrial Engineering, OSU

Prior Governmental Experience: Chair, Corvallis School Board; 509J Budget Committee; OSU Student Government

A LEADER TO SUPPORT ALL STUDENTS

"It has been the honor of my life to serve as the Corvallis School Board Chair. Since my childhood, I have experienced firsthand the power of creating welcoming environments for all children. Now I have the privilege of working to ensure our schools do the same essential work in recovering from the impacts of COVID-19. Please support my re-election so we can continue this work together."

Sami

SAMI'S VALUES ARE OUR VALUES

Sami is committed to ensuring the **voices of all children, parents, and educators** are valued in the school district's work.

Sami sees that **equity strengthens our schools**, ensuring that all students are supported, and all perspectives are respected.

Sami is committed to preserving the district's **record 90% graduation rate** and building **pathways to success with vocational education**.

SAMI SUPPORTS THE DISTRICT'S GOALS

Sami will continue to apply his experience to support district goals toward **Student Achievement, Equitable Systems, Real-World Learning, Health and Wellness, Long-Range Facilities Planning, and Response to COVID-19**.

ENDORSEMENTS WE TRUST

Corvallis Education Association;
Oregon School Employees Association Chapter-2;
United Food and Commercial Workers Local 555 (UFCW 555);
Benton County Democrats;
Linn-Benton-Lincoln Central Labor Chapter (AFL-CIO);
Stand For Children; Planned Parenthood PAC of Oregon;
State Senator Sara Gelsler;
State Representative Dan Rayfield;
Benton County Commissioners Xan Augerot, Nancy Wyse, Pat Malone;
Benton County District Attorney John Haroldson;
Mayor Biff Traber;
City Council President Hyatt Lytle;
City Councilors Ed Junkins, MD, and Charles Maughan
Corvallis School Board Vice-Chair Dr. Sarah Finger McDonald
and members Vincent Adams, Dr. Luhui Whitebear, and Tina Baker;
Corvallis School Board Former Chair Cyrel Gable;
Nicole Hoffman, Alexis McQuillan, Rachel Lassiter, Jenny Davis

Contact Sami at **(541)283-6611** or **votesami.com**

(This information furnished by Sami for Oregon)



**Corvallis School
District 509J**
Director
Position 4

**Luhui
Whitebear**

Occupation: Student Affairs

Occupational Background: Tribal Higher Education

Educational Background: Oregon State University: PhD
Women, Gender, & Sexuality Studies; MAIS; BS Anthropology &
Ethnic Studies

Prior Governmental Experience: Corvallis School Board

A VOICE OF CHANGE FOR THE FUTURE

I am an Indigenous mother with children in our local schools. After being appointed last year, I am running because of my passion for community-based advocacy work. My priorities rely on in-depth data analysis, science, and a detailed understanding of budget processes in addressing community needs focusing on:

EDUCATION

- Stronger support of student mental health, food/shelter, and whole-self leads to increased graduation rates. I am committed to holistic student support as we prepare for fuller return to in-person learning.

EQUITY

- I support the district's equity lens used in advancing all its goals for student success. Leading through an equitable lens leads to stronger academic outcomes and lower instances of bullying.

ANTI-RACISM

- I understand the responsibility of board members in ensuring the district's commitment to anti-racism is based in action. I will hold myself accountable in supporting this transformational district commitment.

Endorsements

State Senator Sara Gelser

State Representatives Dan Rayfield, Tawna Sanchez

Benton County Commissioner Nancy Wyse

Corvallis Mayor & City Council Biff Traber, Mayor;
Hyatt Lytle, President; Andrew Struthers, Vice-President;
Ed Junkins MD; Gabe Shepard; Charles Maughan, Ward 2

Philomath Mayor Chas Jones

Corvallis School Board Dr. Sami Al-Abdrabbuh, Chair;
Sarah Finger McDonald, PhD, Vice-Chair; Tina Baker

Organizations Corvallis Education Association;
Oregon School Employees Association Chapter 2;
Stand For Children; Linn Benton Lincoln Central Labor Chapter of
Oregon AFL-CIO; Planned Parenthood PAC of Oregon;
Benton County Democratic Central Committee;
Our Revolution - Corvallis Allies;

Corvallis Showing Up For Racial Justice (SURJ)

Community Jason J. Dorsette, Co-Founder, SoulForce Education
LLC; Shauna Tominey, Ph.D; Deborah Maytubee Shipman;
Dharma Leria Mirza; Lorena Reynolds; Dr. Melissa Bird;
Susan Bernardin; Charlene Martinez; Mica Habarad;
Nichole Hoffman; Abigail Kurfman; Jimbo Ivy

whitebearfor509j.org

(This information furnished by Luhui for Corvallis School Board)



**Corvallis School
District 509J**
Director
Position 4

**Richard
Arnold**

Occupation: Contract Payables/Trust Manager

Occupational Background: Operations and Policy Analyst,
Finance and Accounting Manager

Educational Background: Masters of Arts in Accounting and
Management, Walden University

Prior Governmental Experience: Former Corvallis School
District Budget Committee Member, Current Corvallis School
District Bond Oversight Committee, City of Corvallis Budget
Committee

My wife and I have lived in Corvallis for the last fifteen years. We have one child who has graduated from the district and two others who are currently attending high school at CHS. I believe education is the cornerstone necessary for any child to be successful later in life. We need to encourage every child to have an intrinsic value for learning, and help them to achieve their full academic potential. To be able to do this we need to have a partnership between parents, teachers and the greater community.

My goals as an elected school board member would be to:

- Increase Student Achievement- Currently, one in three children in K-8 in the Corvallis School District does not meet state essential skill standards in Language Arts, and an even greater number of children do not meet the state essential skill standards in Math. We need to re-focus the board on their core mission which is create policy, goals and objectives surrounding student academic achievement.
- Link the district equity policy to educational outcomes- The school board's equity work over the past five years, while valuable, has not led to any substantive improvements in student achievement or a decrease in the achievement gap. For the board to be able to make strategic decisions and decide how to allocate our scarce resources we must link educational outcomes to the district's equity goals and objectives. Currently, there is little meaningful data being provided to demonstrate the district's success or failure in improving educational equity.
- Continue to improve Career Technical Education- We need to ensure that students have multiple pathways to pursue future employment options that do not involve college.

(This information furnished by Richard Arnold)



**Corvallis School
District 509J**
Director
Position 5

**Shauna
Tominey**

Occupation: Assistant Professor of Practice/Parenting Education Specialist

Occupational Background: Educator; Family Services; Research Scientist

Educational Background: University of Washington, BA/BS (Music/Psychology); Kansas State University, MS (Family Studies); Oregon State University, PhD (Human Development/Family Studies)

Prior Governmental Experience: None

Corvallis is a community I care deeply about. As a Corvallis K-12 graduate and district parent, I am running for School Board to support the community I love. With the stress of a global pandemic, heightened calls for social justice, wildfires and more, students, families, and educators are overextended. In the coming year, we will need thoughtful leadership to meet new and emerging challenges on the path to student success.

With experience in all levels of education, my School Board goals include:

- **Supporting the continued safety of students, families, and educators** with the return to in-person learning;
- **Personalized support for students**, many of whom have struggled to engage in learning or to be sufficiently challenged, with attention to family voice and enhanced support for educators;
- **Dedicated investment in social-emotional learning and positive mental health** with emphasis on equity, inclusion, and trauma-informed care to ensure student well-being and to reduce staff burnout; and
- **Strengthened partnerships** with early learning and parenting systems, afterschool programs, career development, and others to leverage all available community resources to support students and families.

**Together, we can continue building a district where:
everyone is welcome,
every family has a voice,
every educator feels supported,
and every student thrives.**

Learn more at www.shaunafor509j.org

Shauna is endorsed by:

Corvallis Educators Association; Oregon School Employees Association Chapter 2; Benton County Democratic Central Committee; Corvallis Showing Up for Racial Justice (SURJ); Our Revolution Corvallis Allies; Stand for Children; Dr. Sami Al-Abdrabbuh, School Board Chair; Sarah Finger McDonald, PhD, Vice Chair, Corvallis School Board; Luhui Whitebear, PhD; Tina Baker, Corvallis School Board Member; Vince Adams, Corvallis School Board Member; Charles Maughan, Corvallis City Councilor Ward 2

(This information furnished by Shauna Tominey)



**Corvallis School
District 509J**
Director
Position 5

**Rachelle
Spindler**

Occupation: Mental Health Specialist; Clinical Supervisor

Occupational Background: Mental Health Therapist; Teacher; Volunteer at Jackson Street Youth Shelter, Planned Parenthood, and 509J classrooms; Panelist for Boys & Girls Aid Society; DHS Child Welfare adoption trainings

Educational Background: Licensed Professional Counselor; Certified Alcohol and Drug Counselor I; BS- University of California- Davis; MA- Argosy University

Prior Governmental Experience: None

THE MENTAL WELLBEING OF OUR CHILDREN is "my why" for running for office. As a frontline crisis healthcare worker, I've witnessed how hard families are working to remain consistent and intact despite constantly changing guidelines. My lived experience includes balancing work outside the home while my child attends school at our kitchen table; grappling with technology; and maneuvering IEP supports. I promise to listen to everyone's concerns and to advocate for our children's best interest. I will amplify the voices of parents in marginalized communities and those with children identified to have special needs. I will ensure that all families have a seat at the table.

PROTECT SEXUALITY EDUCATION for comprehensive learning and life skills. Not only is this essential to teach our youth to protect themselves, it's also the law. Teaching sexuality, healthy relationships, and body/mind development, in an age-appropriate, medically accurate manner, provides young people information to recognize and prevent abuse, protect against unexpected pregnancy, and avoid diseases. Protecting my children is my #1 priority; I promise to safeguard supports for teachers so they may continue to provide this important curriculum.

DIVERSITY AND EQUITY IS ESSENTIAL TO BUILDING A HEALTHY COMMUNITY. My multicultural background as a child of immigrants, career in mental health, and full time motherhood of two adopted children of color with disabilities has gifted me with experience. I **VALUE** inclusion and diversity. While education provides opportunity, it must also be accessible, equitable, and inclusive. I promise to promote equitable education for all children.

NOTHING ABOUT US, WITHOUT US.

(This information furnished by Rachelle Spindler)



**Corvallis School
District 509J**

Director
Position 5

**Ginger Schudel
Larcom**

Occupation: K-12 Substitute Teacher and Mom

Occupational Background: Teaching and Community Volunteer

Educational Background: MA in Early Childhood and Elementary Education, University of Phoenix; BA in Management and Organizational Leadership, George Fox University

Prior Governmental Experience: None

Why am I running for School Board?

Historically the focus of the School Board has been on student achievement, but recently I feel the district has lost its way. I believe the primary goal of K-12 schools should be **academic excellence**. In addition, schools must:

- be a **safe place for every student** to voice opinions, develop critical thinking, and express individuality without intimidation
- focus on **basic, foundational skills** that will develop productive adults and good citizens
- make available **career planning and job preparedness** long before graduation so students can choose a path that is tailored to their needs and embraces their passions
- promote **family values** and be **transparent** and **accountable** to parents

As your school board member, I will:

- **represent families** while partnering with the schools to ensure our kids get the education they deserve.
- fight to **keep schools OPEN** for the health and education of our children 5 days a week, while following safety requirements.

Community Service:

- **Every Child Linn/Benton:** (Foster Care Assistance) Collected and distributed tangible goods. Provided hospitality to the staff at the Department of Health Services
- **Love INC:** Connected with community members in need
- **Adams Elementary, Linus Pauling, Corvallis High School:** Countless volunteer jobs, including Classroom Assistant, Field Trip Chaperone, Office Volunteer, Volleyball Team Parent, Football Team Parent

It's time for action so that schools are a "**safe haven for all children**"!

I would be honored to have your vote!

(This information furnished by Ginger Schudel Larcom)



**Corvallis School
District 509J**
Director
Position 6

**Tim
Euhus**

Occupation: Financial Advisor

Occupational Background: Athletics and Coaching, Medical Industry physician consultant, Financial Services Industry

Educational Background: Oregon State University, BS 2003

Prior Governmental Experience: None

Other Information: Volunteer Youth Coach (boys and girls). Volunteer HS Football Coach. Kiwanis Sunrisers Corvallis (Director). Boys and Girls Club Johnson Teen Center Capital Campaign.

About Me:

I have been part of the Corvallis community for over 20 years and I have lived full time in Corvallis with my wife and four children for 13 years. All four of our children are attending Corvallis public schools. We have been blessed to work with teachers who love what they do and care passionately for their students.

Academic Excellence:

Our community's kids are the future. Their education must be the best that we can give them. I advocate that ALL students be taught the fundamental skills of reading, writing, arithmetic, and civics and be encouraged to pursue courses in science, languages, literature, music, crafts, the arts, and technology according to their interests and aptitudes.

Locally Relevant:

I would be honored to represent the students, parents, teachers, and the community of Corvallis as an elected, non-partisan Board member.

The children in our community have had a very difficult year. One in three K-8 students in Corvallis were behind academically before COVID. Our school board must ensure that each student is evaluated and properly placed to increase the individual level of success.

Policy Development:

Listen to our TEACHERS

Work with ADMINISTRATORS

Respect our PARENTS

Gain COMMUNITY support

My analytical, leadership, and collaborative skills will be an asset to the School Board. My life experiences have helped me understand the important mix of scholastic and social development a school system provides to students. I will work to create policies and guidelines for ALL OF OUR KIDS in the 509J school district.

Thank you for your support

Please visit timforcorvallis.com

(This information furnished by Tim Euhus)



**Corvallis School
District 509J**
Director
Position 6

**Vince
Adams**

Occupation: School Board Development Specialist, Oregon School Boards Association

Occupational Background: OSU Rural Communities Explorer Program Director; Public Policy Research Assistant; Business Manager; Emergency Medical Services; Sonar Technician (U.S. Navy)

Educational Background: Master of Public Policy, OSU (Rural and Environmental Policy); Honors BS Environmental Science, OSU

Prior Governmental Experience: Corvallis School Board since 2013 (former chair); Benton County Thriving Communities Initiative; Parks Advisory Committee and Planning Commission intern, Reedsport

Children First!

Vince balances every decision the School Board faces with the needs of children. He has two daughters and knows firsthand the joys and challenges of parenting under COVID-19 and in the 21st century. *Vince will always listen to the voice of parents and put children first!*

21st Century Workforce

The American and world economies are rapidly changing. Whether a student is college bound or immediately launching their career, the jobs of the future will require a tech-savvy workforce that can learn quickly and think critically. *Vince knows that building the future begins with education!*

Healthy Kids, Healthy Community

This year Vince has worked directly with educators and district staff to build a plan to get Corvallis students back in school giving him a unique insight into the challenges of meeting the needs of students as we work to build out of the global pandemic. *Vince will prioritize keeping all children and staff healthy and safe.*

Community Engagement Matters

Vince has consistently supported community and student voice in the boardroom and district planning. He believes decisions should be based on core values and solid information. *Vince is a champion for fact-based decision making.*

Endorsed by:

- Corvallis Education Association
- Oregon School Employees Association Chapter 2
- Linn Benton Lincoln Central Labor Chapter of the Oregon AFL-CIO
- Stand for Children
- Corvallis Showing Up For Racial Justice (SURJ)
- Benton County Democratic Central Committee
- Our Revolution - Corvallis Allies
- ...and many individuals! See the website below.

(This information furnished by ElectVince.org)



**Greater Albany
Public School
District 8J**

Director
Zone 1

**Brad
Wilson**

Occupation: Small Business Owner

Occupational Background: Fuel & Oil Truck Driver; Construction; Sales; Electronics Repair; Local Business Owner

Educational Background: West Albany High School; University of Oregon, B.S. in Business with Emphasis in Marketing

Prior Governmental Experience: None

Brad Wilson: Students First!

Growing up in a blue-collar family, Brad Wilson learned the importance of a quality education combined with a strong work ethic. He made the most of hard-working conditions and long hours. This background made it possible for him to own and operate multiple small businesses.

A product of Albany schools, Brad Wilson knows our district has incredible students, parents, teachers, administrators and community partners. Now Brad wants to give back to our community by bringing his experience to the school board.

Fiscal Responsibility

Hardworking Albany families spent the last year providing more education for their kids while facing cuts in hours or even unemployment. Brad will scrutinize school budgets and plans to ensure they make responsible use of hard-earned taxpayer dollars. All of our students deserve the same opportunities regardless of race, gender, religion, or family status.

Accountability & Transparency

The Greater Albany Public School District needs to be open about the decisions they are making about administration, reopening plans, sports, and more. We also need the board to give clear directions and hold the district accountable to those directions. Brad won't be afraid to ruffle feathers to get the answers parents, teachers, and students deserve.

Greater Success for Albany Students

It may be years before Albany fully recovers from the results of this pandemic. Brad will use his leadership skills to use develop a vision for the future of Albany schools:

- Career Technical Education
- Communications and Leadership Training
- Personal Finance

Learn more at bradwilsonforalbany.com

(This information is furnished by Brad Wilson)



**Greater Albany
Public School
District 8J**

Director
Zone 1

**Clarice
Law**

Occupation: Office Manager; Mid-Valley Hearing Center

Occupational Background: Human Resources, ATI Wah Chang; SEA-Behavior Specialist, Greater Albany Public School District

Educational Background: West Albany High School, Diploma; attended Linn Benton Community College; attended Oregon State University

Prior Governmental Experience: None

Community Experience

- PTP-NAE volunteer coordinator, treasurer and four years as President
- District Calendar Committee
- Safety Task Force subcommittee: Physical Environment
- Volunteer coach with ABGC, AYSO and an independent soccer club

Our family has been part of this community for over 40 years. I, and my husband, graduated from West Albany High School. Both our daughters have grown up in Albany attending North Albany Elementary, North Albany Middle School and West Albany High School.

While working for GAPS, I witnessed firsthand the struggles and concerns of both staff and parents on a regular basis. As I encountered these issues, I came to understand that looking outside the "box" for solutions became crucial. I do not intend to simply accept standard answers to how our goals are accomplished without sufficient, coherent explanation. Thus, I intend to ask the difficult questions so we may improve and progress.

If given the honor of serving on the board, I will strive to support and represent the students of our district. I feel this to be a priority for any school board member. Having no agenda of my own, except to continue to improve our school district, will allow me to keep an open mind and actively listen to all views and concerns. A motivation behind running for this position is that I have always been someone who didn't want to just highlight problems but come to the table with solutions and be willing to work those solutions. Educating our children is a difficult and complex job which requires hard work. I look forward to the opportunity to continue to work with our growing community to accomplish even more!

(This information furnished by Clarice Law)



**Greater Albany
Public School
District 8J**

Director
Zone 2

**Willard
Sheppy**

Occupation: Small Business Owner of Valley Health Acupuncture

Occupational Background: Linn-Benton Mediation Services; Oregon State University Faculty Research Assistant

Educational Background: Oregon College of Oriental Medicine; Master of Acupuncture and Oriental Medicine Oregon State University; Bachelor in Science; Major Environmental Studies

Prior Governmental Experience: Albany Parks and Recreation Commission; Albany Traffic Safety Commission

Someone with my experience, approach, and connections to our community is the best fit for the school board.

My entire life and career I've worked with people struggling to achieve their learning goals.

Through it all, I've learned two major lessons.

First is that everyone learns differently, and the more we meet our students where they are, the more progress they'll make. That takes listening, empathy, and a willingness to participate in difficult conversations.

Second is that the only way to ensure the best outcomes for our community—whether that's our students, our teachers, or our employees—is to invest just as much into our well-being as we do into our work. Overworked, and burned-out staff are never going to be as effective as those who have balanced lives.

In my work as a coach, educator, and parent, these three principles are the most important:

Safety

When children know they are safe and protected, they feel free to reach out to others and explore their environment. By maintaining clear guidelines that respect individuals' community needs while protecting the most vulnerable groups, we can reopen our schools as quickly and safely as possible

Belonging

Education is developing social and emotional well-being: giving and receiving acceptance and respect, being a part of a team, club or supportive friend groups, etc. Learning to engage multiple perspectives and interact with different people helps students to become more successful in life.

Esteem

Helping children discover that they are competent and capable is the foundation for building lifelong learners. With the ever-changing work environment and advancements in technology, having employees with skills to maintain this esteem and progress is critical.

(This information furnished by Willard Sheppy)



**Greater Albany
Public School
District 8J**

Director
Zone 2

**Roger
Nyquist**

Occupation: Linn County Commissioner

Occupational Background: Small Business Owner

Educational Background: Albany Area Schools, Linn Benton Community College

Prior Governmental Experience: Linn County Commissioner; Oregon Construction Contractors Board; Connect Oregon Committee; Cascades West Commission on Transportation; Mid-Valley Behavioral Care Network; Community Services Consortium; Linn County Fair Board; Linn County Public Safety Coordinating Council

OUR SCHOOLS NEED TO BE OPEN AND STAY OPEN

Roger Nyquist understands the impacts to students and families when our schools are not open for full in person learning. He will ensure that decision makers have the most current and accurate information available before policy makers ever consider closing schools.

Roger Nyquist will insist that students' and parents' voices are heard.

Roger Nyquist will consider the overall impacts to students and families first and foremost when making policy decisions as a school board member.

"For 20 years Roger Nyquist has guided Linn County in a way that meets all local, state and federal laws. He has done so without having to close county offices or deny services to Linn County citizens as a result of such types of closures."

Jim Yon, Linn County Sheriff

"As the Chairperson of the Linn County Budget Committee I have worked with Roger for the last 15 years on priorities and spending decisions. He carefully considers the impacts to kids and families when making decisions and establishing priorities."

Jennifer Stanaway, Albany

"I support Roger's candidacy for School Board. Our school district will benefit from his 20 years of service leading a public organization in our community."

Alex Johnson II, Mayor of Albany

"We all want the youth in our community to have a bright future. The last year has been tough on kids. As a school board member, Roger will work to improve things for them immediately."

Sue Holman, Albany

(This information furnished by Friends of Roger Nyquist)



**Greater Albany
Public School
District 8J**

Director
At-Large #2

**Pete J
Morse**

Occupation: Dentist; Navy Pilot

Occupational Background: Dental Practice Partner Owner; Navy, Pilot, Flight Instructor, Maintenance Officer, Commanding Officer

Educational Background: Central Elementary; Memorial Middle School; West Albany High School; United States Naval Academy (B.S. in Mechanical Engineering); Navy Flight School; Oregon State University; Maritime Officer School; Embry-Riddle Aeronautical University (Master's in Business Administration); Naval Aviation Safety School; University of Oregon, B.S. General Science; Naval War College Strategic Studies; and Oregon Health Science University School of Dentistry, Doctor of Dental Medicine

Prior Governmental Experience: None

"Education is the great equalizer for our kids." — Dr. Pete Morse

Dr. Pete Morse is the Leader We Need

As a student in Albany schools, Pete Morse discovered the power of education to unlock future success. **As a Navy Pilot and squadron commander**, he used his leadership skills to serve our country at home and abroad. **As a local business owner and dentist**, Morse has the skills to identify issues before they become big problems, work collaboratively with his team and other professionals for the best outcomes, and evaluate results for needed adjustments.

Leadership & Transparency

Community members, parents, administrators, and teachers have questions and concerns that are not being addressed by board and district leadership. Pete Morse will lead by example on transparency to build an open district and board.

Safely Reopen Schools Now

Pete Morse knows we can reopen Albany schools while observing proper safety precautions. State and federal resources are available for districts to tap to keep our schools clean and safe.

Back to Basics

Now is not the time to lower the bar. We can raise achievement level so all our students can succeed. We have fantastic teachers and administrators. A good school board ensures our kids have all the tools K-12 education can provide to reach their potential.

Learn more at peteforgaps.com

(This information furnished by Pete Morse)



**Greater Albany
Public School
District 8J**

Director
At-Large #2

**Denee
Newton-Vasquez**

Occupation: Dean of Students; AVID DD

Occupational Background: English Teacher and AVID Teacher

Educational Background: MAT, Pacific University; BA English, Minor in Spanish, UO

Prior Governmental Experience: None

Albany for ALL

"I was blessed to be a first year English and AVID teacher as well as a Volleyball Coach at South Albany High School in 2010 and worked for Albany Schools for 9 years. With three children in Albany schools. I am 100% invested in our children's education as a parent and an educator. Despite the burden this pandemic has put on our kids and community, I see an amazing opportunity to go beyond our "normal" once again, and utilize the incredible tools that we have gained and rebuild our school systems that were broken long before the pandemic.

With a deep understanding of systems in education and with experience serving students from all backgrounds It's time to eliminate the flaws the pandemic has exposed and create access for each and every student, to the highest quality education possible."

DENEES STANDS FOR ALBANY. FOR ALL

Denee is invested in **ALL Albany voices**. Every community member should have a voice.

Denee believes that Albany schools should be **safe spaces for students to come and learn accessing the highest quality education possible.**

Denee is invested in programs that **serve our students with the highest needs and enrich the classroom for our highest achieving students.**

DENEES IS LISTENING TO PARENTS

Denee's experience as an educator, as well as her experience as a GAPS parent gives her a unique understanding of **Systems, Student Achievement, Vocational Training, Physical and Mental Health, Education Perspectives on Pandemic Healing.**

ENDORSEMENTS WE TRUST

**Karen Skinkis, Philomath School Board Vice Chair
Sami Al-Abdrabbuh, Corvallis School Board Chair
Michael Thomson Albany School Board Director
Justin Roach Albany Greater Albany public schools Board Director At large #2**

Contact Denee at **(541) 521-2640** or
deneenicolenewton@gmail.com

(This information furnished by Denee Newton-Vasquez)



**Monroe School
District 1J**
Director
Zone 1

**Sarah M
Fay**

Occupation: Commercial Lender Citizens Bank
Occupational Background: Soil & Grass Seed Research
Educational Background: Oregon State University, BA & Master of Agriculture
Prior Governmental Experience: Zone 1 Monroe School Board Member

I grew up in Junction City on a horse farm and worked for a local grass seed grower. FFA helped me develop lifelong leadership and communication skills. After High School, I pursued agriculture at OSU earning my Master's degree in 2008. Post-graduation I held two positions within my field but decided a career working with my community was better suited for my personality. I have been employed with Citizens Bank for the past ten years and my education makes me uniquely qualified. I approach my position with a 'people first' focus enabling me to build a multitude of relationships.

My drive and character positioned me to be a part of numerous organizations; Public Relations Chair for Oregon Women for Agriculture, Past President of Lane County Oregon Women for Agriculture, and current Junction 4 Treasurer. Those around me will tell you I lead by example and succeed using accountability.

I chose to move to Monroe after starting our family; I wanted to set roots in a strong, family focused town with neighbors that look out for one another and residents that nurture our youth. The past year has been a trying time for all us throughout many aspects of our lives. There is never a 'one size fits all' approach to anything. However, as a parent and Board Member I believe that our focus was children and families first in our approach to navigate an ever-changing situation. I'm honored to have been elected in 2019 and if you will have me, I would love to continue my service to our great community. My goals remain student oriented; children with the tools, support and resources required to provide them a foundation for success.

(This information furnished by Sarah M Fay)



**Monroe School
District 1J**
Director
Zone 5

**Chris R
Irwin**

Occupation: President; Valley Spray Inc.
Occupational Background: Agricultural Nutritional Application; Valley Spray Inc.
Educational Background: Junction City High School, Diploma; 1991
Prior Governmental Experience: None

Community Involvement:

- Harrisburg/Junction City Pop Warner Football At Large Board Member
- Cornerstone Church At Large Board Member
- Involved in Youth Sports Coaching 2007-Present

Personal Statement:

I was born and raised in the Willamette Valley. My wife (Hilary) and I, along with our two children, have lived in Monroe for the last 12 years. My kids have grown up in Monroe Schools and I have a great appreciation and respect for the Monroe School District Board and the schools they govern. Our schools have provided a solid education and many opportunities for my children.

As a business owner I would use my experience in budgeting and fiscal responsibility to maximize the resources we now have. I'm committed to the work necessary to support our schools as we strive to provide the highest quality education possible so our children can plan for bright futures. I'm looking forward to serving my community, our growing schools, and most importantly the children that attend them. We will have new opportunities and challenges ahead, I am ready to tackle them.

(This information furnished by Chris R Irwin)

This page is
intentionally
left blank



**Philomath School
District 17J**

Director
Position 3

**Joe
Dealy**

Occupation: Substitute Teacher, Philomath & Corvallis School Districts

Occupational Background: Philomath High School advanced math teacher for 30 years; Philomath Middle School math teacher for 1 year; ODE math scorer

Educational Background: Master of Science, Oregon State University; Bachelor of Science, Oregon State University; Diploma, La Grande High School

Prior Governmental Experience: Oregon Department of Education math scoring director

Other Relevant Experience: Director on the board of Benton County Schools Credit Union for 21 years

I am running for Philomath School Board Position #3 in order to continue my service to our students, schools and community. This is my 36th year of involvement in Philomath education and I am proud to say my own children were educated in and graduated from Philomath schools. In addition to teaching, I have served on the school district safety committee and PHS site council. I have also scored and timed PHS basketball and football games for more than 25 years. My expertise in math curriculum development and instruction gives me a leg up in addressing student needs in this area, especially. I believe my experience will be a benefit to the district.

Despite unique challenges, distance learning has also given opportunities for more varied and meaningful instruction for the future. The district needs to be proactive in incorporating these new techniques into current teaching practices.

I believe that CTE (Career & Technical Education) must be a strong component of our middle and high school students' experience. Not every student should be focused on going to a 4-year university. Ties to LBCC and local businesses help empower students in their career goals.

I will strive to ensure equitable opportunities and treatment for all students in our district, as well as providing sound financial oversight for the district to make sure our tax dollars are spent as efficiently as possible.

(This information furnished by Joe Dealy)



**Philomath School
District 17J**

Director
Position 3

**Brittany
Kennedy**

Occupation: Grants Manager, Benton Community Foundation

Occupational Background: Finance Clerk and Recreation Program Coordinator, City of Adair Village

Educational Background: Bachelor of Science, Agriculture Sciences, Oregon State University

Prior Governmental Experience: N/A

Community Involvement: Philomath PTO, President 2019-2021; Zonta Club of Corvallis, Member; Philomath Chamber of Commerce.

Personal Statement: As a parent of a second grader and incoming kindergartener, I will advocate for my children's education, and for the education of every child. Our kids should be our first priority! I will work with other Board Members and the Administration to make sure that every student has access to a quality education

I would be honored to serve on the school board as a representative of this community.

My core beliefs and commitment regarding excellence in education include:

- Schools should be a safe place for students to learn, develop, and grow. Every child should have the opportunity to thrive. This, to me, includes access not only to educational opportunities, but also access to extracurricular activities and services for their mental health.
- I believe in the mission of the school district, "graduate every student and transition each into a job, training, or college." Our schools should be preparing young people for success in education and life. Not every student is on a 4-year college path. I believe skilled trades and vocational jobs should not only be encouraged, but actively taught in the classroom.
- Teachers and staff are essential to the success of our students. They need to be provided the tools necessary to do their jobs effectively and efficiently to ensure our students are provided a quality education.
- This year has been a challenge for students, the school staff, and parents. I will advocate for the opening of schools safely but also advocate for alternatives for students, parents, and staff so that they can make the best choice for their situation.

(This information furnished by Brittany Kennedy)



**Philomath School
District 17J**

Director
Position 3

**Abigail
Kurfman**

Occupation: Educator (2014-present)

Occupational Background: Middle school teacher, Lebanon; Middle & high school teacher, Lincoln City; Grant & technical writer; Community organizer

Educational Background: Marylhurst University (MAT); Lewis & Clark College (BA); Gladstone High School

Prior Governmental Experience: None

Philomath Forward, Together!

By including all students' and families' voices in our community, we can help all our students to learn and grow.

¡Unidos Para Adelante, Philomath!

Si incluimos las voces de todos los estudiantes y sus familias en nuestra comunidad, podemos ayudar a todos nuestros estudiantes a aprender y crecer.

Now more than ever, the importance of our community and schools is clear. We can bounce back from adversity by supporting one another.

To make decisions, especially in challenging times, I value:

- ★ Students: centering students' lives & education
- ★ Wellness & Mental Health: supporting the thriving of students & staff
- ★ Equity & Justice: ensuring a welcoming environment for *all* students & staff
- ★ Collaboration & Respect: tackling challenges with the strength of different perspectives

Experience

As an educator, I've had the honor of leading work with:

- Racial Equity Group (co-founder, building; member, district & regional)
- Theatre (co-founder/developer/fundraiser, teacher, director, organizer)
- GSA (co-advisor, supporting student founders)
- AVID - national program, college readiness (coordinator, teacher)
- Specific building teams (leadership, project committees, including one to create a middle school program distinct from the high school)

As a newer community member, I have engaged in supporting our community by participating in City Council meetings, Philomath Citizen's Academy, and local community organizing. I am active in my church and our local NAACP chapter.

Endorsements

Karen Skinkis, Philomath School Board Vice Chair

Denee Newton, Philomath High School Dean of Students/AVID

District Director

Erin Gudge, Philomath parent (School Board candidate)

Zina Allen, art teacher

Jessica Andrade, Philomath City Councilor

Sami Al-Abdrabbuh, Corvallis School Board Chair

Luhui Whitebear, PhD, Corvallis School Board member

Jason J. Dorsette, Co-Founder, SoulForce Education, LLC

(This information furnished by Abigail Kurfman)



**Philomath School
District 17J**

Director
Position 4

**Joey
McGlinchy**

Occupation: Business Owner; Government Compliance Specialist

Occupational Background: Government; Real Estate; Investigations

Educational Background: Foothill High School, diploma

Prior Governmental Experience: Philomath Planning Commission, Commissioner; Philomath School District Board Budget Committee, Alternate Member

Community Involvement: South Willamette Valley Honor Flight, Volunteer; Youth Sports Official

As we enter a full year of educational struggles, directly related to closures, we need solid plans in place to get our youth back on track. As a new father, watching the struggle of many children and then thoroughly listening to stakeholders (students, staff, parents, and taxpayers), I feel compelled to run for the school board. My top priorities include:

- **Keeping Kids in School:** As we emerge from the affects of closures, it's critical to safely return students to full-time in-person instruction and do everything we can to keep them there. Kids need social interaction and we must provide a robust summer program, in addition to full-time instruction, to reach the level needed for educational recovery.
- **Student/Teacher Support:** The volume of students struggling has vastly increased this past year. Many of them will not be able to simply bounce back once instruction returns to normal. I will push for hiring additional support staff to help get students caught up; especially those who were on the border between success and struggling prior to the pandemic. Teachers will need additional support!
- **Career & Technical Education:** A consistent theme I hear when talking to youth is seemingly focused on only obtaining a college degree, with no thought of the skilled trades. While college is a great option, it should be equally important to expose our students to other opportunities, which provide fulfilling, high-paying, quality careers.

Thank you for the opportunity to represent our community and supporting my promise of
Putting Students First!

Key Endorsements:

- Shelley Niemann, Chair, Philomath School Board
- Bre Miller, Monroe School Board
- Eric Niemann, Former Mayor, City of Philomath

www.VoteJoey.com

(This information furnished by Joey McGlinchy)



**Philomath School
District 17J**

Director
Position 4

**Erin
Gudge**

Occupation: Graphic Designer

Occupational Background: Samaritan Health Services, Senior Graphic Designer; Oregon State University Ecampus, Design Manager

Educational Background: Oregon State University, BFA; Western Governors University, MSML

Prior Governmental Experience: None

As a Philomath resident for nearly two decades, I know the importance of the school district to the entire community. From attending performances and games, to participating in the Veterans' Day assemblies and parades -- the citizens of Philomath are there to show support. It cannot be ignored that we are experiencing difficult times. Our district requires ongoing support to continue through these and future times. No one can be left in the margins. This means meeting students and staff where they are and ensuring that they are given the proper tools for personal success and wellbeing. Every member of the community is integral to the success and progress of the whole.

Goals:

- Transparent communication
- Resiliency through hard times
- Student success via different pathways
- Equity and inclusion
- Kindness in action

As a parent of Philomath students, a community member, and an active district volunteer, I've had the pleasure of witnessing the school employees in action. I've also seen the challenges they, along with our students, face during normal times and the ever-changing challenges of the ongoing pandemic. I provide creative solutions through my work in public relations and communications. My project management skills include working within tight budgets and timelines. I bring this experience and an education in management and leadership to the position. I approach every project with a growth mindset. If I don't know the answer, I will find it. This is the example I provide my children and the example I will set as a member of the Philomath School Board.

This candidate is endorsed by:

Karen Skinkis, Vice Chair Philomath School Board

Denée Newton, PHS Dean of Students, AVID District Director

Diane Crocker, PMS teacher, retired

Abigail Kurfman, educator

(This information furnished by Erin Gudge)

**Corvallis Rural Fire
Protection District**

Director
Position 1

**Tony
O'Donahue**

Occupation: Retired

Occupational Background: Information Technology and Business

Educational Background: University of Central England, MBA

Prior Governmental Experience: Golden Valley Fire Department, MN, Paid on-call Firefighter; Corvallis Fire Department, Volunteer Firefighter and EMT

After a number of years as a volunteer Firefighter for a suburb of Minneapolis, followed by volunteering as a Firefighter/EMT for Corvallis, I decided to retire from active firefighting. But, I realized I was not ready to retire from community service. To that end, I am asking for your support.

While volunteering with the Fire Department, I served primarily within this District, where I am a resident and homeowner. Over the last nine months, I have assisted the CRFPD in their duties and observed its working on a regular basis. Because of this, I feel I have knowledge of the needs and challenges the CRFPD faces.

I feel I am a good fit for this position - I bring not only my firefighting experience, but skills gained in my previous occupation as an IT and Business consultant. Additionally, I hope to be an open, approachable and collaborative member of the Board.

(This information furnished by Tony O'Donahue)



Philomath Fire and Rescue

Director
Position 2

**Ken
Corbin**

Occupation: Self Employed Software Engineer

Occupational Background: Software engineer for Hewlett Packard

Educational Background: BS in Electrical Engineering from Carnegie Mellon University

Prior Governmental Experience: None

I have served as a volunteer firefighter/medic with Philomath Fire and Rescue since 1985 under 5 different fire chiefs. During that time the department has changed from relying on volunteers to respond to all calls to having paid staff and resident volunteers available for all first line responses.

I would like to take my service to the community to a new level, to help the Fire Board to continue improving the work of our local fire department. I have significant experience that will be of great value in making sound decisions that affect our staff – paid and volunteer -- and our outreach to the community. My input on the Board will enhance the Board's understanding of the day-to-day operations of a fire department, especially from the perspective of a long term volunteer.

(This information furnished by Ken Corbin)



Philomath Fire and Rescue

Director
Position 3

**Doug
Edmonds**

Occupation: Software

Occupational Background: Design Eng.-Boeing; Procurement Eng.-HP; Software-CognitiveApps LLC

Educational Background: BSEET; MSEE

Prior Governmental Experience: Philomath Planning Commission; City Council; Budget Committee Chair; Police Committee Chair; Public Works Committee; City Council liaison to Chamber and Philomath Community Foundation; Oregon Institute of Technology IAB Electrical Engineering Chair; Seminary Finance Chair; Started PHRED – PHS Robotics Team; Math volunteer at PMS

I would like to serve on the Philomath Fire and Rescue Board. This will be a new opportunity serve in the community. With the background of serving as city councilor for six years, serving in both private organizations and public committees, I bring these skills to making decisions and contributing to the continued success of the board.

The Philomath Fire and Rescue organization provides a particularly important and essential service to the life and safety of Philomath and surrounding areas. The board oversees the organization and works hard to meet the needs of its service area.

It is important that our First Responders stay trained and well equipped for the future and continuing providing the best response possible.

I will listen and work hard to ensure that Philomath Fire and Rescue continues to be the best agency to serve the needs of its district.

** Vote Doug Edmonds for Philomath Fire & Rescue, Position # 3. **

(This information furnished by Doug Edmonds)

Benton County Measure 2-130

Ballot Title

Caption: Renew Levy for Public Health and Safety Services

Question: To continue health and safety services, shall Benton County impose a five-year \$.90 per \$1,000 assessed valuation beginning 2023?

This measure renews current local option taxes.

Summary: Renewal of the current levy would fund health and safety services which may include:

- Health Services: Mental Health Crisis Resource Center operations; expanded mental and behavioral health crisis outreach; management of communicable disease outbreaks; community health assessment and health improvement planning; and county-wide, school-based mental health services that provide prevention and early intervention to children/youth at risk of mental health problems and school failure.
- Public Safety Services: Expanded pretrial services; 24-hour sheriff's patrol; substance abuse treatment for juveniles and adults; street crimes unit addressing crimes impacting livability issues; digital forensic investigations; counseling and outreach for juvenile offenders; juvenile detention services; courthouse security; district attorney staff for criminal prosecution; and collaborative Crisis Intervention Teams addressing cases of severe mental health crisis presenting risk of criminal activity.
- Corrections Services: Rental of 40 out-of-county jail beds for Benton County inmates and related services, which may include: inmate placement and transportation; jail medical staff; and a transition program to effectively reintegrate local and state inmates to the community who complete their sentences and may need assistance.

At the maximum rate this levy is estimated to impose taxes of \$9,525,400 in 2023, \$9,858,800 in 2024, \$10,203,900 in 2025, \$10,561,000 in 2026, and \$10,930,700 in 2027.

Explanatory Statement

The purpose of this levy would be to maintain funding for public health and safety services, including funding for up to 40 beds for Benton County inmates in other county jails.

If passed, the levy would continue the same maximum tax rate of \$.90 per \$1,000 of assessed value (AV) as the previous levy.

If passed, the proposed measure would fund public health and safety services which may include:

- Health Services: Mental Health Crisis Resource Center operations; expanded mental and behavioral health crisis outreach; management of communicable disease outbreaks; community health assessment and health improvement planning; and county-wide, school-based mental health services that provide prevention and early intervention to children/youth at risk of mental health problems and school failure.
- Public Safety Services: Expanded pretrial services; 24-hour sheriff's patrol; substance abuse treatment for juveniles and adults; street crimes unit addressing crimes impacting livability issues; digital forensic investigations; counseling and outreach for juvenile offenders; juvenile detention services; courthouse security; district attorney staff for criminal prosecution; and collaborative Crisis Intervention Teams addressing cases of severe mental health crisis presenting risk of criminal activity.
- Corrections Services: Rental of 40 out-of-county jail beds for Benton County inmates and related services, which may include: inmate placement and transportation; jail medical staff; and a transition program to effectively reintegrate local and state inmates to the community who complete their sentences and may need assistance.

Levy Cost

At \$.90 per \$1,000, the tax would cost \$7.50 per month or \$90 per year for every \$100,000 of a property's assessed value.

The levy would be for five years beginning in 2023.

(Submitted by the Benton County Board of Commissioners)

Benton County Measure 2-130 Argument For:

Vote YES on 2-130 Renew Levy for Public Health and Safety Services

The League of Women Voters of Corvallis urges your support for continuation of the Benton County local option levy. The League, a nonpartisan political organization, encourages informed and active participation in government, works to increase understanding of major public policy issues, and influences public policy through education and advocacy. One of the overriding principles of the League is that adequate financing be provided to government agencies that share in the solution of social problems that affect our public welfare.

Some of the services funded by this levy include:

- **Mental health counselors** who have a high success with intervention programs that help troubled youth turn their lives around and prevent their incarceration as adults;
- **Home wellness visits** that assure adequate medical services for high-risk children and help fight infectious disease outbreaks
- **Sheriff's deputies** available 24/7 for better crime prevention and faster emergency response
- **Rental of 40 out-of-county jail beds** to accommodate overflow prisoners
- **Rehabilitation programs** to aid offenders in returning to a meaningful life.

Without continuation of this local option levy, many of these services and others will vanish.

Your property tax bill will NOT increase with the passage of 2-130, as this is simply an extension of the currently funded levy.

PLEASE VOTE YES ON 2-130 TO RENEW THE LEVY!

LEAGUE OF WOMEN VOTERS OF CORVALLIS

(This information furnished by League of Women Voters of Corvallis)

Benton County Measure 2-130 Argument For:

VOTE YES ON 2-130!

Vote to keep Benton County the healthy, safe and welcoming place we cherish. This measure is a **flat-rate renewal** of the current Health & Safety Levy at \$0.90/\$1,000 of assessed property value. It was first passed by voters in 2007 and has since been renewed twice.

This measure will not go into effect until 2023 to ensure that there is **no double-taxation**. If the measure fails, the County will have to make significant cuts to health and safety services when the current levy expires. Maintaining these services after June 2023 is contingent upon renewal, which will raise an average of \$10.2 million/year over the five-year term of the levy.

VOTE YES ON 2-130!

A renewal means the following valuable services will be maintained over the five-year term of the Benton County Health & Safety Levy:

- Home wellness visits by nurses for high-risk children and mothers
- Mental health counselors in all county schools
- Counselors to work with juvenile offenders and their families
- Community crisis resources and services
- 24-hour sheriff's patrol throughout Benton County
- Services to hold criminal offenders accountable
- Transition support and assistance programs to effectively reintegrate inmates into the community
- Criminal prosecution staff in the District Attorney's office
- Courthouse security
- Corrections and medical staff at the Benton County jail
- Supplemental jail bed rentals

We urge you to **vote YES on Measure 2-130**, so that we may continue providing responsive and proactive services to keep our communities healthy and safe across Benton County.

Together we can keep Benton County a safe and healthy place to live.

(This information furnished by Benton County Commissioners Xan Augerot, Pat Malone and Nancy Wyse)

Benton County Measure 2-130 Argument For:

KEEP BENTON COUNTY HEALTHY AND SAFE. VOTE YES ON MEASURE 2-130.

Without the levy, vital services will be ELIMINATED or CUT:

- Mental Health Services
- Children's Health Services
- 24/7 Sheriff's Patrol
- 40 Jail Beds

Support Our Community. Protect Vital Services. Prevent Harmful Cuts.

Renew the levy. Your YES vote will not make your taxes go up!

VOTE YES ON MEASURE 2-130

- With your YES vote, we can provide mental health counselors to work with students at public schools, as well as counseling adult and juvenile offenders and their families.
- With your YES vote, we'll have the resources needed to hold criminal offenders accountable, and also provide them rehabilitation programs.
- With your YES vote, we can continue the community's strong support of health and safety shown by first passing the levy in 2007 and renewing it twice since.
- With your YES vote, we can provide home wellness visits by nurses for high-risk children, and fund adequate medical services to help fight infectious disease outbreaks.
- With your YES vote, we'll be able to maintain deputy patrols 24/7 for better crime prevention and faster emergency response.
- With your YES vote, we can better plan for the future, by knowing what resources are available. This renewal will not go into effect until 2023, ensuring NO DOUBLE TAXATION.

Put your vote where your heart is. Keep Benton County a healthy and safe place to live.

RENEW THE LEVY. VOTE YES ON MEASURE 2-130.

(This information furnished by Lauana Beaty, Kevin Ewanchyna, Bill Gellatly, Annabelle Jaramillo, James Luebke, Julie Manning, Stacy Mellem, Gabe Shepherd, Diana Simpson-Godfrey, Andrew Struthers, Jo Anne & Cliff Trow, Curtis Wright, and Penny York)

Benton County Measure 2-130 Argument For:

Join us in supporting Ballot Measure 2-130

Vote yes to renew the Benton County levy for Public Health and Safety Services at the current rate of \$0.90 per \$1,000 of assessed value. At current property values, the levy will provide an average of \$10.2 million/year needed funding.

Renewing the Public Health and Safety Services Levy is vital to the continuation of important county services:

- Management of communicable disease outbreaks
- In-school mental health services providing early intervention to at-risk children/youth
- Crisis Intervention Teams and counselors to work with juvenile offenders and families
- Substance abuse treatment for juveniles and adults
- 24-hour sheriff's patrol throughout Benton County
- Prosecution services to hold criminal offenders accountable
- Supplemental jail bed rentals and associated transportation and other related costs
- Transition programs to help inmates reintegrate into the community

These programs help keep Benton County healthy and safe!

Vote Yes for Public Health and Safety. Vote Yes on Measure 2-130.

Senator Sara Gelser
Representative Dan Rayfield
Biff Traber, Mayor of Corvallis
Chas Jones, Mayor of Philomath
Dan Sheets, Mayor of Monroe
Sami Al-AbdRabbuh, Chair, Corvallis School Board

(This information furnished by Citizens for a Safe and Healthy Benton County)

Benton County Measure 2-130 Argument For:

Measure 2-130 will directly impact the quality of your life in Benton County. In 2007, 2012 and 2017 you passed similar measures thereby agreeing to pay a tax of less than 1/10th of 1 percent assessed value of your real property to help support the health, safety and welfare of your families, friends and neighbors. All of us should be proud of the thousands of people that were helped, of the property that was protected, and of the lives that were saved by this modest investment in the betterment of our community.

A YES vote on Measure 2-130 will continue this critical investment in the livability of our community.

As Circuit Court judges, we see the direct benefits of this investment every day and we fear the potential devastating impact that a loss of this funding will have on public health and safety.

A YES vote on Measure 2-130 will help assure Benton County's ability to:

- maintain its current level of law enforcement patrols
- effectively prosecute criminal conduct
- maintain minimally adequate jail space to house dangerous criminals
- provide drug and alcohol treatment to criminal offenders
- properly monitor convicted criminals in our community

In addition, these funds are vital to the County's ability to meet the needs of children by:

- funding necessary early intervention programs
- placing resource officers in our schools
- provide drug and alcohol prevention and treatment services
- maintain adequate bed space in the juvenile detention facility
- funding juvenile counselor positions to work with our at-risk youth

We urge you to show your continued support for the protection of the health, safety and welfare of all who live and work in Benton County by voting YES on Measure 2-130. It is up to you to continue funding essential public safety services.

(This information furnished by Honorable Locke A Williams, Honorable Matthew J Donohue, Honorable Joan M Demarest)

Benton County Measure 2-130 Argument For:

As Sheriff and District Attorney, we are uniting together in this joint statement to explain the serious damage that will occur within our local criminal justice system if Measure 2-130 is not passed.

Since 2007, voters have supported public safety through a local option levy which restored critical funding for the Sheriff's Office and District Attorney's Office. This allowed the Sheriff's Office to restore 24/7 patrol coverage as well as the District Attorney to prosecute critical cases.

The situation is serious once again.

SHERIFF'S OFFICE

Without the renewal of the levy, the Sheriff's Office will lose the following services:

24/7 countywide patrol coverage.
Approximately one third of deputies providing the coverage as well as conducting investigations.
School Resource Deputy program resulting in increased vandalism.
40 jail beds rented outside of Benton County resulting in a 50% reduction in available jail beds.
Transition Center to assist houseless and mentally ill offenders with housing and other critical needs.
Deputies in the Jail and Parole & Probation.

DISTRICT ATTORNEY'S OFFICE

Without the renewal of the levy, the District Attorney's Office will lose the following services:
Loss of 2 deputy DA's and 1 paralegal. Each deputy DA handles 500+ cases a year, one of the highest caseloads in the state.
20% reduction in criminal prosecution services (currently averaging more than 18,000 scheduled court appearances, and more than 42,000 services to victims per year).
20% reduction in the number of cases prosecuted due to lack of deputy DA's necessary to appear in court.
Loss of proactive response to drug-related crime in our communities.

Renewing this county levy is essential to maintain current services.

We urge a YES vote on Measure #2-130 on May 18, 2021.

Interim Sheriff Jefri Van Arsdall and District Attorney John Haroldson

(This information furnished by Interim Sheriff Jefri Van Arsdall and District Attorney John Haroldson)

**Benton County
Measure 2-130
Argument For:****No Arguments Against
Measure 2-130
Were Filed****Support Critical Health and Public Safety Services
VOTE YES on measure 2-130**

Fourteen years ago the quality of life in Benton County was in jeopardy. Our Sheriff's office was understaffed, unable to effectively patrol our county roads. Our district attorney's office ranked last in the state. Hundreds of criminal cases were not prosecuted. Our county health department budget was cut \$700,000 affecting programs such as early intervention for children at risk of abuse or substance dependency.

The situation was bad, but enough caring voters cast a yes vote for a five-year local option levy and remedied the losses of critical services.

In 2012 and 2017 voters again stepped up and renewed the levy so we could continue to receive these and other virtual law enforcement and healthcare services.

Now, it's time for us to once again step forward and support the local option levy in order to protect the important services we all depend on. The levy is a renewal at the same rate, not an increase! Our vital services can be protected at no increased cost! A win-win! Please vote YES on nonpartisan measure 2-130.

Without our YES vote, hundreds of criminal cases will not be prosecuted.

Without our YES vote, 24/7 crime prevention and fast emergency response will be curtailed.

Without our YES vote, services to help prevent infectious disease outbreaks, provide mental health, addiction, and children's health services will be cut back.

Let's protect the place we call home. Keep Benton County safe and healthy. VOTE YES on 2-130

(This information furnished by Benton County Democratic Central Committee)

Registering to Vote

To vote in Oregon you need to be registered in the county where you reside.

You can register if you can answer yes to these three questions:

- Are you a resident of Oregon?
- Are you a US citizen?
- Are you at least 16 years of age?

If you are 16 or 17 years of age, you will not receive a ballot until an election occurs on or after your 18th birthday.

How to register

You can register to vote online at www.oregonvotes.gov or you can get a voter registration card at any of the following places:

- Benton County Elections Office
- any county elections office
- the Secretary of State's Office
- some state agencies such as the Division of Motor Vehicles (DMV)
- a voter registration drive

You can fill the card out in person or send it in by US mail. You can also print out a registration card online at: www.oregonvotes.gov.

What information is required to register?

To complete your registration you will provide your:

- full legal name
- home address
- date of birth
- signature
- valid identification

Updating your voter registration

Once you have registered, you are responsible for keeping your information up to date. You can do this online at www.oregonvotes.gov or by completing and returning a voter registration card with the new information. You should update your registration if you do any of the following:

- change your home address
- change your mailing address
- change your name
- change your signature
- want to change or select a political party

Oregon Voter Registration Form



You may use this form to register to vote or update your information

- 1. Print with a black or blue pen to complete the form.
2. Sign the form.
3. Mail or drop off the form at your County Elections Office.

You may also use online voter resources to register or update your registration status.

oregonvotes.gov

qualifications

Are you a citizen of the United States of America? [] yes [] no
Are you at least 16 years of age? [] yes [] no

If you mark no in response to either of these questions, do not complete this form.

personal information *required information

last name* first* middle
Oregon residence address, city and zip code (include apt. or space number)*
date of birth (month/day/year)* county of residence
phone email
mailing address, including city, state and zip code (required if different than residence)

Oregon Driver's License/ID number

Provide a valid Oregon Driver's License, Permit or ID:

[][][][][][][][]

I do not have a valid Oregon Driver's License/Permit/ID. The last 4 digits of my Social Security Number (SSN) are:

x x x - x x - [][][][]

I do not have a valid Oregon Driver's License/Permit/ID or a SSN. I have attached a copy of acceptable identification.

political party

[] Not a member of a party

- [] Constitution
[] Democratic
[] Independent
[] Libertarian
[] Pacific Green
[] Progressive
[] Republican
[] Working Families
[] Other _____

signature I swear or affirm that I am qualified to be an elector and I have told the truth on this registration.

sign here _____ date today _____

If you sign this card and know it to be false, you can be fined up to \$125,000 and/or imprisoned for up to 5 years.

registration updates Complete this section if you are updating your information.

previous registration name previous county and state
home address on previous registration date of birth (month/day/year)

Elections & Passports Division



Office: (541) 766-6756
Fax: (541) 766-6757

120 NW 4th St. Room 13
Corvallis, OR 97330

co.benton.or.us/elections
elections@co.benton.or.us

ABSENTEE APPLICATION

This is not a voter registration form. You must be a registered voter to request an absentee ballot. If you are unsure of your status, you can contact our office or check online at www.oregonvotes.gov. If you have a Drivers' License or ID with the Oregon Department of Motor Vehicles, you may apply electronically for an absentee ballot, update your voting information or register at www.oregonvotes.gov.

Completed and signed absentee application may be submitted by e-mail, fax, mail or deliver in person.

Please select **only one** category:

- Military
 Out of Country Permanently
 Student
 Snowbird
 Out of Country Temporarily
 Other: _____

Please select **only one** of the three options below:

<input type="checkbox"/> 1. All future elections until further notice.
<input type="checkbox"/> 2. All future elections until the following day: _____ (mm/dd/yyyy)
<input type="checkbox"/> 3. Every year, I will be away from _____ (month) _____ (day) till _____ (month) _____ (day) This will continue to happen until further notice.

Name (Last, First, Middle)	Date of Birth (mm/dd/yyyy)
----------------------------	----------------------------

Absentee Address Line 1
Absentee Address Line 2 (if applicable)
Absentee Address Line 3 (if applicable)
COUNTRY (For United States address: City, State, Zip Code)

Benton County Residential Address
City, State, Zip Code

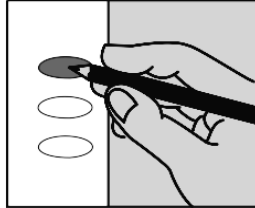
E-Mail	Telephone
--------	-----------

Signature	Date
-----------	------

How to Cast Your Ballot

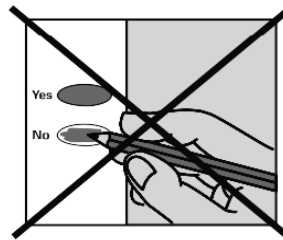
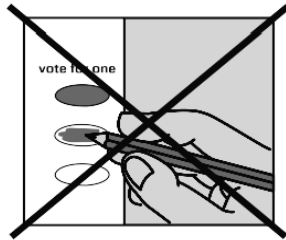
check your ballot!

Use a black or blue pen to fill in the ovals next to your choices.



If you vote for more candidates than allowed, or if you vote **both** Yes **and** No on a measure, it is called an overvote.

Your vote **will not count** for that candidate or measure.



You do not have to vote on all contests. Those you do vote on will still count.

Contact Benton County Elections to request a replacement ballot if:

- you are unable to correct a mistake to make your intended choice clear
- your ballot is damaged or spoiled
- you lose your ballot

Benton County Elections

Phone: (541) 766-6756

Fax: (541) 766-6757

TTY: (800) 735-2900

Email: elections@co.benton.or.us

1 866 ORE VOTE/673 8683

Se Habla Español

www.oregonvotes.gov

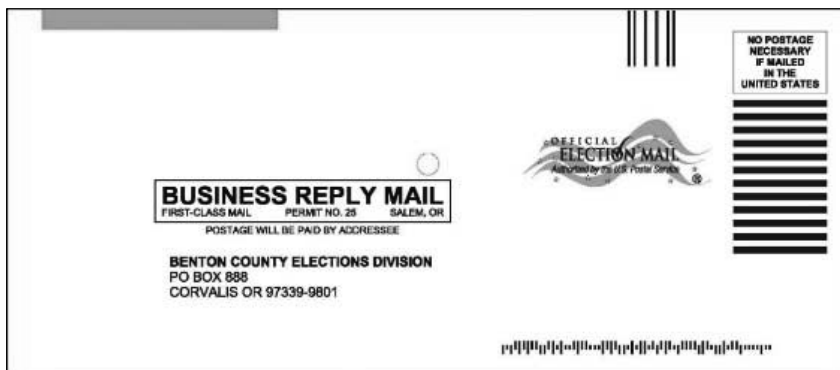
Prepaid Postage Ballot Return Envelope

With prepaid postage, you no longer have to search for a stamp to mail your voted ballot. Beginning this year, all ballots in Oregon will be sent to voters with a prepaid postage return envelope.

When you mail back your voted ballot, the Post Office will charge the State of Oregon for each ballot sent back to an Elections Office. Only ballots sent back through the mail will be charged to the State.

Important notice: Postmarks **do not** count for ballots in Oregon. If we have not received your ballot by 8:00 PM on Election night, your vote **will not count**.

Please return your ballot by mail before May 12, 2021, to ensure receipt at the Elections Office by the 8:00 PM May 18th deadline. After **May 11, 2021**, use an Official Ballot Drop Site in Oregon. Benton County Official Drop Sites are listed on page 31.



Please remember to sign your ballot envelope

RETURN ENVELOPE

IMPORTANT! Failure to sign below will invalidate your ballot.
Your ballot must be received by 8:00 p.m. election day to be counted.

VOTER'S STATEMENT
By signing, I certify that:

- I am a United States Citizen.
- I am the person to whom this ballot was issued.
- I am legally qualified to vote in the county that issued this ballot.
- This is the only ballot I have voted this election.
- I still live at the address printed below.

SIGN HERE John Q Public

WARNING: Signing another person's name to this envelope is a Class C felony.

POSTAL CLERK: Deliver to address on other side.

BENTON COUNTY OFFICIAL BALLOT DROP SITES

Benton County Elections & Passports Office

Basement of County Courthouse
120 NW 4th St Rm 13, Corvallis OR 97330
541-766-6756
Mon thru Fri 8:00 am to 5:00 pm
Election Day 7:00 am to 8:00 pm

24-HOUR OUTDOOR BALLOT DROP BOXES

Benton County Courthouse

Courthouse lawn on 4th Street
120 NW 4th St, Corvallis OR 97330

Benton County Courthouse

Accessible entrance on 5th Street
120 NW 4th St, Corvallis OR 97330

Benton County Courthouse

Across the street on 5th Street
180 NW 5th St, Corvallis OR 97330

Benton County Sunset Building

Drop box in parking lot
4077 SW Research Way, Corvallis OR 97333

Corvallis Public Library

Corner of 6th and Monroe next to bike rack
645 NW Monroe Ave, Corvallis OR 97330

OSU Gill Coliseum

Corner of Ralph Miller and 26th
660 SW 26th St, Corvallis OR 97331

Wells Fargo Bank

Timberhill Shopping Center
2543 NW Kings Blvd, Corvallis OR 97330

Corvallis Community Center (C3)

Drop box near main entrance
2601 NW Tyler Ave, Corvallis OR 97330

LBCC Benton Center

Drop box near main entrance
757 NW Polk Ave, Corvallis OR 97330

Lincoln Health Center

Drop box at parking lot exit
121 SE Viewmont Ave, Corvallis OR 97333

Adair Village City Hall

Drop box at City Hall parking lot entrance
6030 NE William R Carr Ave
Adair Village OR 97330

Monroe Community Library

Drop box at the entrance to the drive up
book drop in parking lot
380 N 5th St, Monroe OR 97456

North Albany Shopping Center

Drop box in front of IGA Supermarket
621 Hickory Ave NW, Albany OR 97321

Philomath Public Library

Drop box near main entrance
1050 Applegate St, Philomath OR 97370

INDOOR BALLOT DROP BOXES

City Limits Market

5800 NW Hwy 99W, Corvallis OR 97330
541-745-7194
Mon thru Fri 7:00 am to 8:00 pm
Sat 9:00 am to 8:00 pm
Sun 10:00 am to 7:00 pm

John Boy's Alsea Mercantile Store

186 E Main St, Alsea OR 97324
541-487-4462
Mon thru Sun 8:00 am to 7:00 pm
Election Day 8:00 am to 8:00 pm

Benton County Elections
120 NW 4th St Rm 13
Corvallis, OR 97330

NONPROFIT
CAR-RT SORT
U.S. Postage
PAID
Portland, OR
Permit No. 692



*****ECRWSS****
RESIDENTIAL CUSTOMER

OFFICIAL BENTON COUNTY
VOTERS' PAMPHLET
MAY 18, 2021 SPECIAL ELECTION

