



**Benton
County**
OREGON

OFFICIAL VOTERS' PAMPHLET

**Special Election
May 16, 2023**

The publication and distribution of this pamphlet is coordinated by the County Clerk. The candidate and measure information within was provided by candidates, cities, districts and other interested parties that chose to participate in this portion of the election process.



**Benton County - Kalapuya Building
4500 SW Research Way, 2nd Floor
Corvallis, OR 97333**

Phone: 541-766-6756

E-Mail: elections@bentoncountyor.gov

Website: www.co.benton.or.us/elections



**Benton
County**

**BOARD OF
COMMISSIONERS**

Board of Commissioners

Office: (541) 766-6800

Fax: (541) 766-6893

4500 SW Research Way

PO Box 3020

Corvallis, OR 97339-3020

co.benton.or.us/boc

Dear Benton County Voter:

Tuesday, May 16, 2023, is Special Districts Election Day in Oregon. As a registered voter, you will have the opportunity to exercise your right to vote on local district board positions and any measure affecting the districts in which you reside.

The County publishes voters' pamphlets to provide local candidates the opportunity to share their message with voters. Candidate Statements are an optional filing, and not all candidates choose to file a statement. Additionally, measure proponents and opponents have the opportunity to submit arguments for or against local measures. This pamphlet includes the complete text for each local measure. An electronic version of this pamphlet is available at the Clerk's website.

www.co.benton.or.us/elections

This election includes Special District positions for Schools, Educational Service, Community College, Rural Fire, and other districts. A county-wide bond measure regarding community safety, mental health and homeless service facilities and a tax measure for Palestine Rural Fire Protection District voters are also on the ballot.

Voters have three options for returning their voted ballots. By mail, postmarked no later than Election Day. In-person at any Oregon County Elections Office or Official Ballot Drop Site in the State of Oregon before 8:00 PM on Election Day, Tuesday, May 16, 2023.

Please see the last page of this pamphlet for a list of Official Ballot Drop Sites in Benton County. If you need additional information or assistance, you may reach the Elections Office by phone: (541) 766-6756; email: elections@bentoncountyor.gov; or in-person at 4500 SW Research Way, 2nd Floor, in Corvallis.

Sincerely,

Nancy V. Wyse

Commissioner

Xanthippe Augerot

Commissioner Vice-Chair

Pat Malone

Commissioner Chair

TABLE OF CONTENTS

2	Letter from the Commissioners
3	Table of Contents
4	Voting Instructions
5	Access to Translated Voters' Pamphlet and Ballot Return Options
	Linn-Benton-Lincoln Education Service District
6	Director Zone 4 - Jim Blount
	Linn-Benton Community College
7	Director Zone 2-3(A) - Stacie Wyss-Schoenborn and Director Zone 2-3(B) - Dick Running
8	Director Zone 6-7(A) - Sherlyn Dahl and Director Zone 6-7(B) - Jeff Davis
	Alsea School District 7J
9	Director Position 3 - Jamie Olsen and Tara Millheim
	Corvallis School District 509J
10	Director Position 2 - Chris Hawkins and Steven Castellano
11	Director Position 3 - Terese Jones and Director Position 6 - Judah Largent
12	Director Position 7 - Sarah Finger McDonald
	Greater Albany Public School District 8J
13	Director Zone 3 - Michael Thomson and Sean Taylor
14	Director At-Large #1 - Ben Watts and Ryan Mattingly
	Philomath School District 17J
15	Director Position 2 - Ryan Cheeke and Steven King
16	Director Position 5 - Sandi Hering and Karen Skinkis
	Corvallis Rural Fire Protection District
17	Director Position 3 - Bob Conder and Director Position 5 - Heidi Hagler
	Measure - Benton County
18	2-140 Bonds for community safety, mental health, and homelessness services facilities.
19-25	2-140 Arguments in Favor
26-27	2-140 Arguments in Opposition
	Measure - Palestine Rural Fire Protection District
28	2-139 Measure proposing renewing five-year operating local option tax levy.
29	Registering to Vote and Absentee Voting
30	Voter Registration Form
31	Benton County Official Ballot Drop Box Locations

Candidate statements and measure arguments within this pamphlet are **optional** filings. To view filings of candidates who chose not to submit a statement to be published in pamphlet, please go to www.co.benton.or.us/elections.

Information provided in statements or arguments submitted by a candidate, a political party, an assembly of electors or those who support or oppose a measure have not been verified for accuracy or truth and do not constitute an endorsement by Benton County.

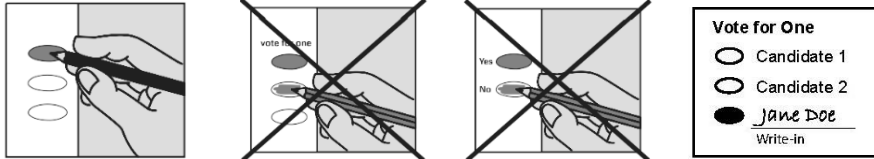
Voting Instructions

Your Ballot Packet Contains

- A printed ballot on which you may vote
- A prepaid and pre-addressed signature return envelope in which to return your ballot

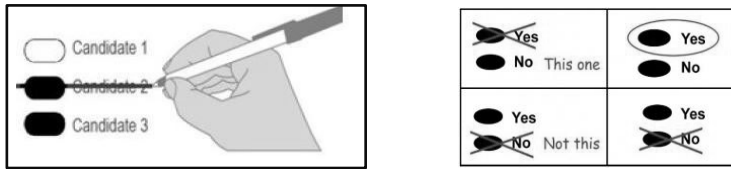
Voting Your Ballot

- Use a black or blue pen to fill in the ovals next to your choices.
- You do not have to vote on all contests. Those contests you do vote on will still count.
- If you vote for more candidates than allowed or if you vote both Yes and No on a measure, it is called an overvote and your vote will not count for that candidate or measure.
- To write-in a candidate who does not appear on your ballot, completely darken the oval to the left of the write-in line and write the full name of the candidate on that line.



Correcting Your Ballot

If you make an error on your ballot, you may correct it yourself. See examples below:

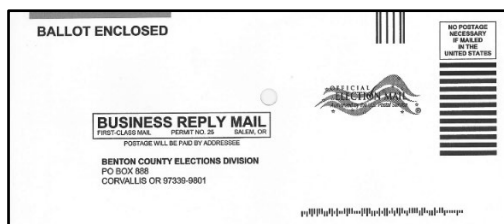
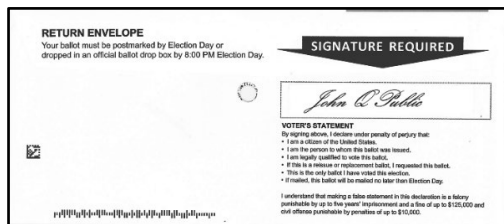


Contact Benton County Elections to request a replacement ballot if:

- You are unable to correct a mistake to make your intended choice clear
- Your ballot is damaged or spoiled
- You lose your ballot

Returning Your Voted Ballot

- **SIGN** the voters' statement on the back of the signature return envelope. Your ballot will not be counted if your return envelope is not signed.
- Insert ballot into the signed return envelope.
- Seal the signed return envelope.
- **Mail no later than May 16, 2023.** It must be postmarked by Election Day and received no later than seven days after Election Day.
- Or place the signed return envelope in an **Oregon Official Ballot Drop Box by 8:00 PM PST May 16, 2023.**



Access to Translated Voters' Pamphlet

Selected portions of this county voters' pamphlet are available in Arabic, Simplified Chinese, Korean, Russian, Spanish, Thai, and Vietnamese. These translations can be found online at oregonvotes.gov/BentonVP

تتوفر أجزاء مختارة من كتيبات الناخبين لهذه المقاطعة باللغة العربية يمكن العثور على هذه الكتيبات عبر الإنترنت على [.oregonvotes.gov/elections/BentonVP](https://oregonvotes.gov/elections/BentonVP)

本县选民手册的部分内容提供简体中文版本。可以访问 oregonvotes.gov/BentonVP 获取译本。

주 유권자 팜플렛의 선택된 부분은 한국어 준비되어 있습니다. 번역은 온라인 oregonvotes.gov/BentonVP 에서 찾아볼 수 있습니다.

Отдельные части брошюр избирателей этого округа доступны на русском языке. С данными переводами можно ознакомиться в Интернете по адресу: oregonvotes.gov/BentonVP

Algunas secciones de este folleto para votantes del condado están disponibles en español. Estas traducciones están disponibles en línea en oregonvotes.gov/BentonVP

จูลสารผู้ลงคะแนนในเขตนี้บางส่วนจัดทำเป็นภาษาไทย ฉบับแปลเหล่านี้สามารถพบได้ทางออนไลน์ที่เว็บไซต์ oregonvotes.gov/BentonVP

Các phần được chọn trong tập tài liệu cử tri quận này có bản ngôn ngữ tiếng Việt. Các bản dịch có thể xem trực tuyến tại oregonvotes.gov/BentonVP

Ballot Return Options

- **Drop** your ballot in an official Oregon ballot drop box **by 8:00 PM PST Election Day.**
- **Mail** your ballot so it is **postmarked by Election Day** and it must be **received no later than seven days after Election Day.**





**Linn-Benton-
Lincoln Education
Service District**

Director
Zone 4

**Jim
Blount**

Occupation: General Manager - Peak Sports

Occupational Background: Business

Education: OSU, BS Ecological Engineering

Prior Governmental Experience: None

I have been actively involved in the Corvallis community both personally and professionally for over a decade, primarily through my role as general manager at Peak Sports and in partnership with various community organizations. I have a passion for leadership, outdoor recreation, and working hard to effect positive change. I volunteer as a youth crisis counselor, and through that role, I have seen how giving children a voice can empower them to overcome challenges and thrive. As an LGBTQ+ person, I have not had the opportunity to see my own identity reflected in leadership positions, and I would like to help create a future where all students and educators can envision themselves in decision-making roles.

My educational background in engineering, my career as a business leader, and my group management experience in the outdoors have enabled me to develop a unique approach to problem-solving that focuses on balancing perspectives without losing sight of effective outcomes. I've had the privilege to cultivate my leadership skills in a variety of settings from backcountry rivers to nonprofit board meetings, and these experiences have reinforced my conviction that groups must be agile, collaborative, and empathetic in order to be successful.

I believe I would be an asset on the ESD board. I value any opportunity to make a positive impact, and it would be an honor to leverage my background, perspective, and skill set to represent the interests of students and ESD staff.

(This information furnished by Jim Blount)



**Linn-Benton
Community
College**
Director
Zone 2-3(A)

**Stacie
Wyss-Schoenborn**

Occupation: Management

Occupational Background: For 25+years I've worked in various executive management capacities in the financial services industry

Educational Background: Marylhurst University, M.B.A.; University of Oregon, B.A. Political Science

Prior Governmental Experience: City of Albany Parks & Recreation Commission 2019-2022; LBCC Board of Education Zone 2-3A, 2022-present

Dear voters,

I am eager to remain on the Board of Education at Linn Benton Community College. I believe that every student deserves access to an excellent education, and I am committed to making this a reality in our community.

At Linn Benton Community College, our mission is to engage in education that benefits the cultural richness and economic vitality of our communities. As a member of the Board of Education, I will prioritize equity and inclusion, strong community partnerships, and innovation and creativity to achieve this mission.

Firstly, I will ensure that every student has access to high-quality educational resources. Policies that promote educational opportunities and access for all will be a top priority for me.

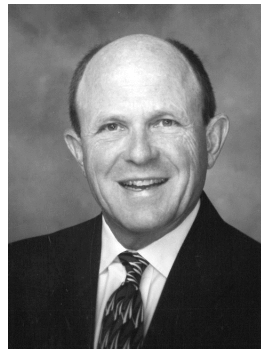
Secondly, I believe that strong partnerships between schools, families, businesses and community organizations are essential to student success. I will work to build bridges between LBCC and the community, to promote collaboration and ensure that our students both fulfill their educational goals and achieve gainful employment.

Finally, I will advocate for policies that support innovative programs and creative approaches to learning, so that students are equipped for the future. Education is constantly evolving and we must be at the forefront of new developments in curriculum, teaching and learning to benefit our communities.

As a member of the Board of Education at Linn Benton Community College, I promise to work tirelessly on behalf of our community's students, families and employers. I am passionate about education and have the skills and experience to make a positive impact. I would be honored to have your vote.

Thank you for your consideration.

(This information furnished by Stacie Wyss-Schoenborn)



**Linn-Benton
Community
College**
Director
Zone 2-3(B)

**Dick
Running**

Occupation: Retired

Occupational Background: Certified Public Accounting practice, from 1974 to 2017 in Oregon (Corvallis for 2 years, Albany for 41 years); and 1970 to 1974 in Denver, Colorado

Educational Background: Pacific Lutheran University, BSBA in 1965; University of Denver, MSBA in 1970

Prior Governmental Experience: Member of the Board of Education of Linn-Benton Community College from 2007 through present. This is an elected position.

OTHER INFORMATION: I've actually been involved with LBCC since 1974 when I started teaching an accounting course in the evening. Since that time I have been involved in a number of ways: working for 2 different CPA firms that have performed annual financial audits of LBCC; been the treasurer of many levy elections of LBCC; member of the Board of the LBCC Foundation; played in their fund raising golf tournaments, and many other things. I strongly support LBCC's mission of providing an education that enables all students to benefit from the economic vitality of our communities. I have seen time and time again, that the education that LBCC provides, changes lives!!

I have also been an active member of the Albany community by being a charter member (since 1979) of the Greater Albany Rotary Club, a member of the Albany Area Chamber of Commerce, a long-time member of Good Shepherd Lutheran Church (including singing in the choir!!), a prior member on the United Way board, a prior member of the board of the Samaritan Albany General Hospital Foundation, and a prior member of the board of Central Willamette Credit Union.

I served in the US Navy for a total of 24 years: 4 years of active duty and 20 years in the Navy Reserve, reaching the rank of Captain (O6).

(This information furnished by Dick Running)



**Linn-Benton
Community
College**
Director
Zone 6-7(A)

**Sherlyn
Dahl**

Occupation: Retired

Occupational Background: Director of Benton County Community Health Center (2006-2020); Executive Director of Family HealthCare Center in Fargo, ND (1993-2006); Community Health Nurse at Fargo Cass Public Health; and Registered Nurse in various hospital settings including Neonatal Intensive Care, Pediatrics, and a rural hospital in Minnesota

Educational Background: St. Luke's School of Nursing, Diploma RN; Minnesota State University Moorhead, BSN; University of Minnesota School of Public Health, Masters in Public Health (MPH)

Prior Governmental Experience: Public employee as Director of Benton County Community Health Center, 2006-2020

I have served as an appointed member of the LBCC Board of Education since November 2021. I have seen the dedication LBCC has for outreach and creating opportunities so everyone can access a meaningful education, as well as their commitment to the success of every student. As the Executive Director of Community Health Centers for over 25 years, my professional career has been dedicated to addressing barriers and supporting individuals to improve their health and achieve their goals. That experience aligns well with the goals and direction of LBCC to balance growth, keep education affordable, and demonstrate financial value and accountability. I will use my experience in balancing financial constraints with the needs of individuals, families, and communities to assist in guiding LBCC to achieve its future goals. I am committed to making high quality, affordable higher education available to all, and connecting the programs and students of LBCC to current and emerging employment needs within our communities.

(This information furnished by Sherlyn Dahl)



**Linn-Benton
Community
College**
Director
Zone 6-7(B)

**Jeff
Davis**

Occupation: Retired College Administrator

Occupational Background: Branch Campus Administrator; Dean; Non-profit Director; Marketing Manager; Steelworker

Educational Background: OSU B.S. and OSU Ed.M; attended 509J schools Mt. View, Cheldelin, and CVHS (diploma); credit and non-credit professional development through five Oregon community colleges including LBCC; post-graduate studies in educational administration, campus safety, student affairs, and enrollment management

Prior Governmental Experience: LBCC Board of Education; Oregon Disabilities Commission (gubernatorial appointment); The Oregon Consortium & Oregon Workforce Alliance; various local advisory boards

Why I Serve on the LBCC Board

I believe that an effective, comprehensive community college is among the most effective structures for promoting economic and social justice. My LBCC experience dates back to the 1980s and includes stints as a student, volunteer, instructor, manager, administrator, and now board member. LBCC possesses a unique capacity among educational entities to serve individuals, families, and businesses throughout the region. Board members provide a voice for those who may feel unheard and unrepresented, including those from historically overlooked communities. Board members occupy a unique role in their stewardship of a valuable public asset, promoting financial and policy directions designed to hold up over time.

A Lifetime Commitment to Community Service

I've served in these organizations as a board member, volunteer, and/or supporter: American Red Cross, ARC/Special Olympics, Boys & Girls Club, CARDV, Celebrate Corvallis, Cornerstone Associates, Corvallis Arts Walk, Corvallis Fall Festival, Corvallis Homeless Shelter Coalition, Corvallis Schools Foundation, Corvallis Spring Roll, Habitat for Humanity, Imagine Corvallis, Jackson Street Youth Services, Leadership Corvallis, LBCC Family Fun Day, Employers Partnership for Diversity, NAACP, NWCCU Accreditation, Oak Creek Youth Correctional Facility, OMSI/STEM Fair, OSU Welcome Day, OSU Women's Gymnastics, Pastega Holiday Lights, Resilience Project, Rotary, SAGE Community Garden, Trillium Services, Linn-Benton Food Share, United Way, and Youth Mental Health Coalition.

(This information furnished by Jeff Davis)



**Alsea School
District 7J**

Director
Position 3

**Jamie
Olsen**

Occupation: HR Admin & Bookkeeper
Occupational Background: 17 years Bookkeeping
Educational Background: Philomath High School, diploma
Prior Governmental Experience: OR SACSE

I believe that the school board's role is to be local policy makers that have the closest connection to the students and the community's voice with the local knowledge and responsibility to improve student achievement. I have the desire to make a difference in our school district and community. I want to honor the values, history, and pride that comes with being an Alsea Wolverine while being open and proactive in district and community improvement and growth. I would like to see improvement to policies and policy enforcement, making Alsea School District a safe and comfortable environment for staff and students. I would like to also nurture and grow the community and mostly parental involvement, respecting a parent's voice in their child's education.

I have served on various committees and boards, all with an extreme interest in children and families.

I previously held a position or served for the following: Sacred Heart Medical Center NICU Family Advisory Council, former March of Dimes Ambassador, CPS/PES Parent Club, Mid-Valley Pop Warner BOD

In addition, I am currently on the following Boards/Committees: Alsea School District Budget Committee, Alsea Wolverines Booster Club -Bookkeeper, Alsea School District Bond Oversight Committee -Secretary, Volunteer EMR for the Alsea Fire Department

The list of qualification that I feel I could bring to the table are: 17 years of bookkeeping experience- I understand and respect fiscal responsibility and accountability, good communication skills, excellent organizational skills, Special Education experience with student and family advocacy, as well as working collectively to make change and improvements to local and state government policies.

(This information furnished by Jamie Olsen)



**Alsea School
District 7J**

Director
Position 3

**Tara
Millheim**

Occupation: Homemaker; Community Leader
Occupational Background: Children's Mental Health
Educational Background: University of Idaho, BA
Prior Governmental Experience: None

My husband and I bought a place here and have been excited to get involved with the community, and help it grow. With one of our own attending brick and mortar this year, my eye has been on the school and ways to make it better. I feel there is a consensus on what that is, now that the dust has settled, the focus needs to be on the well being of the kids.

My background and experience will serve well on the Alsea School Board. Having worked 5 years in direct service care of children of trauma and working closely with therapists has given me a unique perspective for this position. I have advocated for the needs of children, especially in a school setting, which makes me very aware of what all children need when it comes to their education. Which is an understanding that you have to meet every child where they are, and that a kid needs to feel safe in their environment.

When we come together to do that then every child will be able to grow to their full potential. I hope to be a part of what makes Alsea School a garden of beautiful growth I can already see.

(This information furnished by Tara Millheim)



**Corvallis School
District 509J**

Director
Position 2

**Chris
Hawkins**

Occupation: Retired Educator with 37 years of service
Occupational Background: Crisis Response Coordinator;
Elementary Teacher
Educational Background: BA Linfield College
Prior Government Experience: Benton County Housing
Opportunities Action Council

I have been a dedicated and contributing member of the Corvallis community for the past 30 years.

- My three children graduated from CHS, and I have four grandchildren attending Corvallis schools.
- I worked for Corvallis School District for the past 27 years as an elementary teacher and Crisis Response Coordinator.
- I supported all kids in crisis, including kids experiencing homelessness, kids in juvenile and foster care, LGBTQ+ kids, and kids with mental health challenges.
- I facilitated the district's threat assessment process.
- I worked closely with law enforcement agencies, the Juvenile Department, Child Protective Services, local clergy leaders, and nonprofits to coordinate support.

I will prioritize education and respect for our students and staff, and I support equitable policies for students and families from all backgrounds and identities.

While on the board, my priorities will be that:

- Schools have systems in place to address the variety of threats that interfere with creating a safe learning environment.
- **All students**, including those with unique physical, emotional and social needs, experience positive learning environments that respect their individuality, their learning level, and the pathway to succeed.
- The district continues to expand career and technical programs (vocational programs).

Endorsements:

Corvallis Education Association; Benton County Democrats
Stand for Children; Sara Gelsler Blouin: State Senator
Xan Augerot: Benton County Commissioner
Charles Maughan: Corvallis Mayor
Briae Lewis: City Councilor Ward 2
Lorena Reynolds: Managing Attorney, The Reynolds Law Firm, PC
Anne Schuster: Retired County Commissioner, Retired Corvallis
School Board Member
Donna M. Keim: Past Corvallis School Board Member
Current School Board members: Sami Al-Abdrabbuh, PHD,
Vince Adams, Terese Jones, Shauna Tominey,
Sarah Finger McDonald, Tina Baker
Julie Manning; Catherine Fisher
Parent of former students: Laurie Laney

<https://www.chris4allkids.com>

(This information furnished by Chris Hawkins)

No
Photo
Submitted

**Corvallis School
District 509J**

Director
Position 2

**Steven
Castellano**

Occupation: Pathfinder Clubhouse Volunteer & Corvallis
Multicultural Literacy Center Front Desk Volunteer
Occupational Background: Published 3 times; Over half a
decade of experience in education; More than 2 years of
experience in healthcare; Over ten election cycles of experience
in politics; Experience in non-profits; Experience in publishing;
Experience in a district office; Experience in sales
Educational Background: BA in Public Policy with History
minor from William Jessup University; MA in Government with
focus in International Relations from CSU Sacramento
Prior Governmental Experience: California Sixth Assembly
District Office Fall 2012 Volunteer

My Message:

Our public schools need to stress academic excellence and some day move to an 8-hour school day where "homework" is completed during school with the guidance of tutors by having partnerships with local colleges.

Education is an essential public good and better academics should be a priority for our community to catch up to the students in other states such as California and Washington.

Oregon schools rank 48th in the nation and Corvallis schools should lead the way in improving that number.

More education funding, higher teacher salaries, higher test scores and higher graduation rates should be our priorities for improving our schools. I am a Progressive running for schoolboard position # 2.

(This information furnished by Steven Castellano)

No
Photo
Submitted

**Corvallis School
District 509J**
Director
Position 3

**Terese
Jones**

Occupation: Faculty, LBCC

Occupational Background: Education, human services and social policy

Educational Background: OSU, MS in Human Development and Family Studies

Prior Governmental Experience: Corvallis School Board, Director, 2017-present

I look forward to continuing to serve the community of Corvallis as our district advances the important equity work of ensuring that every student feels represented among our staff, inside our buildings, and in the curriculum that we teach. As a board member, I will continue the important equity work that I have been a part of for the last six years, helping to ensure that our children receive the support needed to reach their best selves. I am proud to be part of a community that is committed to equity in education and to continue the partnership with our community as a board member, and a liaison to reach our educational goals for our district together.

Endorsed by:

Corvallis Education Association
Benton County Democrats
Charles Maughan, Corvallis Mayor
Dr. Shauna Tominey, Co-Vice Chair, Corvallis School Board
Dr. Sarah Finger McDonald, Chair, Corvallis School Board
Vince Adams, Corvallis School Board

(This information furnished by Terese Jones)

No
Photo
Submitted

**Corvallis School
District 509J**
Director
Position 6

**Judah
Largent**

Occupation: Attorney

Occupational Background: Riddell and Largent, attorney and co-owner (present); Largent Law, attorney and owner; Deschutes Defenders, attorney; Umpqua Valley Public Defender, attorney

Educational Background: University of Oregon, Juris Doctor; Eastern Washington University, Bachelor of Arts in Communication Studies and Bachelor of Arts in Women's and Gender Studies

Prior Governmental Experience: Soil and Water Conservation District Director, Douglas County, past

Optional Information: I am motivated to run for school district director because my years as a juvenile public defense attorney clearly showed me how school district policy directly impacts vulnerable youth. I am a progressive candidate looking to build on and strengthen current progressive policies.

Corvallis School District created quality, evidence-based, and inclusive policies, which continually need review to assure the most up-to-date and quality policies are in effect. Students and staff can benefit from development of an age-appropriate and trauma-informed harm reduction policy covering mental health first aid, overdose intervention/prevention, and healthcare information.

I want to connect with students, families, and school staff as much as possible to hear directly how current policies are applied and what unaddressed needs exist. I will look first to impacted communities for solutions to issues, rather than holding a belief that I know what would be most effective without input. I believe in the motto "Nothing about us without us."

I have a passion for restorative justice, accessible spaces and information, and inclusive educational environments. My goal is to help prepare and equip students to be successful, by their own definition, both in school and in life.

Endorsements:

Vince Adams, Corvallis School Board

Benton County Democrats

Cassie Purdy, Political Director, Planned Parenthood PAC of Oregon

(This information furnished by Judah Largent)



**Corvallis School
District 509J**
Director
Position 7

**Sarah Finger
McDonald**

Occupation: Academic Advisor, OSU; Chairperson, Corvallis School Board

Occupational Background: Instructor, Research Associate, OSU

Educational Background: PhD, Horticulture, OSU; MS, Virginia Tech; BS, Notre Dame; K-12 Arlington, Virginia public schools

Prior Government Experience: Director Corvallis School Board; LBL ESD Budget Committee; OSBA Legislative Policy Committee

Serving on the Corvallis School Board has been rewarding and challenging. I am running for reelection because my work feels critical and unfinished as we lead our schools out of the pandemic and into a bright future for all our students.

Our district has had many achievements to celebrate:

- Increasing 9th graders on track to graduate from 79% in 2020/21 to 90% in 2021/22.
- Creating learning spaces and CTE classrooms worthy of our amazing students and staff through our bond project.
- Launching a construction program at College Hill High School.
- Establishing a district mental health program.
- Working with student leaders to create a policy outlining the role of student representatives to the school board.
- Engaging our community in developing goals for our district.
- Maintaining respectful and productive working relationships on the board and with our superintendent.

In my next term I will focus on:

- Providing all students opportunities to be challenged, show growth, and achieve.
- Making data driven decisions to utilize resources where they can make the most impact for our students.
- Ensuring our students are reading at grade level by 3rd grade.
- Expanding our real world learning opportunities to include the arts.
- Raising our graduation rates for all students.
- Advocating for public schools.

Endorsements:

Corvallis Education Association; Benton County Democrats; Stand for Children

Corvallis School Board Members Vince Adams, Sami Al-Abdrabbuh, PhD, Tina Baker, Shauna Tominey, PhD; Xan Augerot, Benton County Commissioner; Miriam G. Cummins, LBL ESD Board Chair; Gabe Shepherd, Corvallis City Councilor Sarah Divine; Christine Gough; Jenny Saarloos; Nina Erlich-Williams; Taryn Bazaruto; Alice Mills Morrow

(This information furnished by Sarah Finger McDonald)



**Greater Albany
Public School
District 8J**

Director
Zone 3

**Michael
Thomson**

Occupation: Parent

Occupational Background: Administrative

Educational Background: The Evergreen State College BA

Prior Governmental Experience: Greater Albany Public Schools Board; City of Albany Budget Committee; City of Albany Human Relations Commission; LBL ESD Budget Committee

Community Experience: Board member Albany Partnership for Housing & Community Development; Officer Central-Takena PTA; Volunteer Greater Albany School District; Volunteer St. Mary's Parish; Board member Friends of Historic Albany.

Parents and Teachers Working Together

I am the son of public schoolteachers. I know firsthand that teachers and school support staff go beyond their contract to do the best for our students. In return, the District should do more to support those who help our kids every day.

The pandemic years have taken a toll on all of us. The District should focus on learning loss over these last few years. I support expanded summer learning opportunities, specific reading and math interventions and badly needed mental health services to help our students succeed.

Success in first term

- Lowered class sizes in kindergarten and 1st grade.
- More Career/Technical Education classes at both the High School and Middle School levels.
- Eliminated the "pay to play" fees for Middle school & High school, hired counselors for elementary schools.

"Albany kids need a courageous leader with an unshakeable commitment to meeting the needs of every student. Without question, Michael Thomson is that leader." Sarah Gelser Blouin, State Senator

"As a parent of a child at Takena elementary, I have seen Michael work with teachers to provide a better school experience for all students."

Steph Newton, Albany City Councilor

Endorsed by Albany Leaders

Sara Gelser Blouin, State Senator

Sharon Konopa, Former Mayor of Albany

Steph Newton, Albany City Council

Xan Augerot, Benton County Commissioner

Frank Bricker, Former Chair Greater Albany School Board

Jennifer Ward, Former Chair Greater Albany School Board

Peggy Burris, Executive Director Albany Historic Carousel & Museum

Contact Michael

Thomsonforgaps.com

Phone (541) 971-0456

email: michael@thomsonforgaps.com

(This information furnished by Thomson For Albany)



**Greater Albany
Public School
District 8J**

Director
Zone 3

**Sean
Taylor**

Occupation: General Contractor; Small Business Owner

Occupational Background: Distribution Supervisor; Inventory Manager

Educational Background: University of California, Berkeley
BS Integrative Biology

Prior Governmental Experience: None

YOUR VOICE

"I hope to earn your vote and advocate for a high quality education for your children on the GAPS Board." - Sean Taylor

For Your Children

Sean Taylor believes that all children, no matter their background or situation, deserve to have an environment to learn and practice the skills they will need for their lives. GAPS needs to be that environment for our students.

As the son of a special needs educator and grandson of a school administrator, Sean knows that we cannot succeed without good people. He believes that we must make it a priority to retain and recruit high quality staff.

For You

Sean Taylor believes that it's the responsibility of the school board to be accountable to parents and be their voice in GAPS. He will ensure that parents have the right to be involved and voice their concerns and goals for the education of their children.

As a small business owner and working class contractor, Sean realizes that the perspective of every parent is important. He will prioritize involving parents from all backgrounds, including our working and middle class.

For Our Future

Sean Taylor believes that the goal of school is to prepare students with facts and skills they will need for the rest of their lives in both business and society. He is committed to developing schools that teach students to think critically in an environment free from discrimination and political agendas.

"I have a dream that my four little children will one day live in a nation where they will not be judged by the color or their skin, but by the content of their character" -Martin Luther King Jr (Aug. 28th 1963, NPR)

(This information furnished by Friends of Sean Taylor)



**Greater Albany
Public School
District 8J**
Director
At-Large #1

**Ben
Watts**

Occupation: Stay at Home Dad
Occupational Background: Samaritan Health Services IT Operations Manager; Small Business Owner; US Army Intelligence Analyst/Arabic Linguist
Educational Background: BA in English - OSU; Associates - LBCC
Prior Governmental Experience: Greater Albany Public Schools Budget Committee

Dear Friend,

I was born and raised in Albany, attended Albany schools, and have lived here for my entire life except during my time in the Army. My two children attend public schools, and I am passionate and dedicated to doing the hard work to improve our schools. Our community is growing, and together we must prepare our children, and our school district, for the next phase of growth.

Equity in Learning

We have children from many different walks of life, facing varied challenges. Let's meet them at the point of their need. We need practical improvements to

- Expand our special education
- Maximize the time our teachers spend interfacing with students
- Reduce class size
- Increase access to Behavioral Health resources

Addressing Learning Loss

In recent years, the workload on teachers has grown, reducing student-teacher interaction. Let's work to

- Expand Career and Technical Education (CTE) programs
- Employ varied modes of education
- Reduce non-student facing tasks from teacher workloads

What does the community say about Ben?

"From his time volunteering on the school board's budget committee and with our local American Youth Soccer Organization, Ben has both the passion and the experience Albany needs to represent our kids and our community on the Greater Albany Public School board."

Steph Newton, Albany City Councilor

"Ben has a heart for improving the lives of children, and our school district will be well-served with him joining the board of directors."

Jackie Montague, Albany City Councilor

Also Endorsed by:

Dr. Ramycia McGhee, Albany City Councilor
Marilyn Smith, Albany City Councilor
Benton County Democrats
Linn County Democrats

www.BenforGAPS.com

(This information furnished by Friends of Benjamin Watts, PAC ID: 21911)



**Greater Albany
Public School
District 8J**
Director
At-Large #1

**Ryan
Mattingly**

Occupation: Retired Educator
Occupational Background: Special Programs Director, Greater Albany Public Schools; Superintendent/Principal North Lake SD7; Special Education Teacher, Hermiston and Beaverton
Educational Background: University of Oregon, Administration License, MS Special Education, BS Psychology
Prior Governmental Experience: None

GAPS, we can do better!

Opportunity

Every student can be successful in Albany schools. I spent my career working and advocating for all students, in particular students with disabilities and other underserved populations. We need a high quality, focused, and intentional educational environment in order to provide these students the opportunity to meet their full potential. We need options for students who are not succeeding with traditional learning methods. Resources should be maximized in classrooms and buildings, in front of students, where they can be most effective.

Fidelity

As Special Programs Director, I oversaw behavior management for the district. I am intimately familiar with the programs we have, and their strengths and shortcomings. I know what it looks like when programs are being run effectively and with fidelity as they were designed and I know what it takes to reduce and eliminate aggressive and destructive behavior in our schools and classrooms. This can be done while providing all students the opportunity to learn and thrive.

Transparency

Parents are the most important factor when it comes to a child's education. They are the customers and clear and open communication is essential. Parents have a right to know what is being taught and to have a voice in schools.

Learn more at: Ryan Mattingly for GAPS School Board on Facebook

mattingly.for.schoolboard@gmail.com

(This information furnished by Ryan Mattingly)



Philomath School District 17J

Director
Position 2

Ryan Cheeke

Occupation: Owner & Operator of Cheeke Farms
Occupational Background: Philomath area farmer/rancher for over 23 years
Educational Background: Corvallis High School, Diploma; Linn-Benton Community College, Associates Degree in Animal Technology
Prior Governmental Experience: Farm Service Agency Committee Member, 2020-Present (Current Committee Chair)

Community Involvement:

- Benton County 4-H Beef Superintendent (1999-Present)
- Benton County Fair Board (2010-Present)
- Benton County 4-H Youth Auction Committee Member
- Philomath PTO Sponsor
- Philomath Frolic & Rodeo Sponsor

I was born and raised in the Willamette Valley and am proud to call Philomath my home. Philomath is a wonderful place of community, friendship and support; I am blessed to be able to raise my family and operate my business here. I am running for Philomath School Board because this community, our children and their education is of utmost importance to me.

My experience serving on different boards as well as being a business owner has provided me with a good understanding of fiscal responsibility, budgeting, and working together towards common goals. Volunteering in 4-H has given me the opportunity to work with area youth, and parents alike for many years. I enjoy seeing these young people succeed and be proud of their accomplishments through their individual projects. I want to see this same success and determination in all the kids of our schools. I believe that while college is a great option for many students, it is not for everyone. We owe it to these students to equally support and encourage other opportunities in vocational education. Our future depends on a school board whose members work together to support our kids, parents, teachers and administrators so that our schools can be a place of growth, opportunity, security and success.

Endorsed by:

Rick Wells, Chair, Philomath School Board

Darrell Hinchberger, President, Philomath Frolic & Rodeo

Juli Larsen, Owner, The Farmer's Daughter Farm and Flower

John Eveland, Owner, Gathering Together Farm

Tim Gerding, On behalf of the Gerding family

(This information furnished by Ryan Cheeke)



Philomath School District 17J

Director
Position 2

Steven King

Occupation: Retired
Occupational Background: Chief Technical Architect, ESP Solutions Group 2005-2016; Data Management Director 1989-2005; Education Technology Consultant 1985-1989; Wyoming Dept of Education; Computer Resource Teacher, Whisman SD 1981-1982; Math Teacher, James Logan HS 1979-1981
Educational Background: UC San Diego, BA Math; San Jose State University, Education Degree
Prior Governmental Experience: National Forum on Education Statistics 1990-2005

After nearly 40 years working in education, it's time to give back. I retired in 2016 and moved to Philomath to be near my daughter's family – she teaches at OSU.

I've taught in high school, middle school, elementary school, and college. I worked for 20 years in the Wyoming Dept of Education, first in Education Technology then in Information and Data Management. I worked 11 years consulting around education data management with multiple state departments of education, the US Education Department, and dozens of school districts. I have insights into all aspects of district operations, including:

- student assessment and accountability
- special, gifted, and career/technical education
- curriculum design
- technology
- school finance
- transportation
- food service
- facilities management

I volunteer as a mentor for the Philomath Robotics team – PHRED. I'm highly impressed with the quality of students and staff I've met.

I volunteer on the Community Impact Committee of the Benton County United Way. We manage the City of Corvallis City Service Funds and award United Way grants. Philomath Community Services, Philomath Youth Activities Club, and Coastal Range Food Bank are some of our grantees. I was the 2020 Benton County United Way Volunteer of the year.

To give back to the community, I run the annual "Blinky Lights in Philomath" holiday light display.

I believe strongly in

- Putting Students First,
- Transparency,
- Collaboration,
- Data-Driven Decisions

Philomath Schools do well and are highly rated on a variety of national and state rankings. I bring the deep knowledge, experience, and skills necessary to continue to improve these accomplishments.

(This information furnished by Steven King)



**Philomath School
District 17J**

Director
Position 5

**Sandi
Hering**

Occupation: Retired

Occupational Background: Licensed Veterinary Technician, 35 years

Educational Background: Corvallis High School graduate

Prior Governmental Experience: None

Volunteer: Benton County 4-H Leader, 35 years and continuing; Philomath Fire and Rescue, Budget Committee; Philomath School District, Budget Committee; Philomath Frolic and Rodeo, Lifetime member; Benton County 4-H Beef Barn Superintendent

I'm running for Philomath School Board, position 5. Being retired, I have more time to invest in our kids. I've been doing that as a 4-H Leader. I want to expand further. My priority is to provide appropriate and meaningful education. My desire is to nurture bright and successful futures. Our youth will be leaders tomorrow, let's prepare them today. If they plan for higher education, we help set them up for that. If they choose a skilled trade, let's help them plan for that. If we lead by example, we'll be setting the bar for excellence and accountability.

I was raised in Corvallis. After marriage, over 45 years ago, we moved to Philomath. We raised our two children here, they attended Philomath Schools. I've always loved being part of such a great community. Philomath has historically displayed a sense of pride in volunteerism that has served young and old alike. I'm proud to be from Philomath.

As a 4-H leader, I advocate for youth. My whole intention is to enrich them with life experiences and lessons they can carry throughout their everyday lives into their futures. The results of my efforts have been very rewarding.

I will continue to advocate for our youth. I stand up for what I believe. I'm not afraid to use my voice. I want to do what's right for our kids. I assure you, I will do my best for the students in Philomath School District.

Endorsements: Rick Wells, Philomath School Board, Chair
Craig Edwards, owner, Finn Construction
Janelle Marcotte, Business owner
Lynette Tutt, Small Business owner

(This information furnished by Sandi Hering)



**Philomath School
District 17J**

Director
Position 5

**Karen
Skinkis**

Occupation: Practice Manager, Upper Hand Orthopaedics

Occupational Background: Upper Hand Orthopaedics (2012-present)

Educational Background: Oregon State University, BS- Political Science

Prior Governmental Experience: Philomath School Board Director, 2019 - present

It has been my honor to serve on the Philomath School Board since 2019. When I ran in the Spring of 2019, no one could know that the way we run a school district would be turned on its head a year later. This pandemic forced our staff, students, parents and admin to do education in a way we had never had to before. Our staff, students and parents all did the best they could for our kids. While our state testing numbers show we are doing above average, there is always room for improvement. We know there is an educational gap - I am committed to helping to bridge this gap resulting from the pandemic, especially for those who have been historically marginalized and whose progress suffered most during remote learning.

I am asking for your support so that I might continue to serve on the board in a manner that pushes us forward, providing an equitable education opportunity to all students. I want to see our district continue to focus on graduating all students, and preparing them to be citizens of the world, while we work to stay within the confines of the budget. It is not lost on me that while we continue to face rising costs during a time when the level of state funding is not increased at the same pace. PSD could face some big budget decisions in the coming years and I am committed to working towards a budget that allows for the best possible learning environment by continuing to make Philomath School District where people want to come to teach, where we have top notch staff, up to date curriculum and facilities that makes staff and students want to be in the buildings.

(This information furnished by Karen Skinkis)



**Corvallis Rural
Fire Protection
District**
Director
Position 3

**Bob
Conder**

Occupation: Currently the Chairman of the Board of Directors of the CRFPD, an unpaid position

Occupational Background: Manufacturing Engineer at Imtech 2002-2005, Manufacturing Engineer & Manager at HP 1975-2002; US Air Force Radar Technician 1968-1972

Educational Background: Bachelor of Science in Electrical Engineering from the University of Utah, 1975; USAF Radar School, Keesler, Miss., 1968

Prior Governmental Experience: CRFPD Board, 2004-Present; President of the Madrone Water Association, 1999-2005

In 2001 we had a fire in the field in front of my house and my attention was drawn to the fire services that came from the Locke Fire Station. Shortly after that, I started attending the CRFPD Board meetings as a public citizen sitting in and listening to what they were doing.

Around 2005 a seat on the Board opened up and I saw an opportunity to serve my community again. I ran and was elected and by 2010 became the Secretary of the Board. In 2015 the Board chose me to be Chairman.

In my time on the Board, I have overseen the construction of a fire suppression/sprinkler system at the Locke Fire Station, managed the RRV Scholarship program, promoted the installation of a second water source for the Oak Creek area at the top of Fawnee drive, and negotiated 3 contracts with the CFD on behalf of the District. In addition, I kept track of our Apparatus Replacement Schedule which included the purchase of three used Cal Fire Brush rigs, a new F550 Type VI Brush Rig, the sale of an old Pumper/Tanker to make room for the New F550, and most recently, working with Benton County Fleet Maintenance, we've put two new Brush Rigs on order to further enhance the safety of our communities in the Wildland Urban Interface.

Please see my full Bio at Corvallisrfrpd.com/bob-conder

Endorsed by Biff Traber

(This information furnished by Bob Conder)



**Corvallis Rural
Fire Protection
District**
Director
Position 5

**Heidi
Hagler**

Occupation: Retired

Occupational Background: Actuarial Consultant, Multi-Employer ERISA Trust Funds

Educational Background: University of California at Berkeley, BS; University of London, England, MS

Prior Governmental Experience: Corvallis Rural Fire Protection District Budget Committee, 2021-present

As relative newcomers to the area, my husband and I provided an easement to the CRFPD for the construction of a 40,000 gallon water cistern on our property. This led to my interest in the workings of CRFPD and other ways in which I might help support the Board and Corvallis Fire Department. I began attending meetings on a regular basis and was appointed to the budget committee. As part of that role I came to understand the Board's goals, especially related to long-term planning for large purchases such as fire apparatuses and additional cisterns. I developed a planning tool that illustrates potential long range financial outcomes based on different assumptions (such as increased/decreased tax income, expenses or interest rates) for the Board's use. In my consulting role prior to retirement, Labor and Management clients would routinely request this type of "what if" financial information as part of collective bargaining and ongoing financial management of their benefit plans, so this approach made sense to me.

The importance of cooperation, collaboration and engagement between the District, District constituents and myriad other stakeholders may never have been more important than it is in this moment as we face the challenges of climate change. My goal as a CFRPD Board member is to support planning and community engagement activities which will now and into the future enhance the safety of District constituents and their property.

(This information furnished by Heidi Hagler)

Benton County Measure 2-140

Ballot Title

Caption: Bonds for community safety, mental health, and homelessness services facilities.

Question: Shall Benton County issue \$110,000,000 of general obligation bonds for community safety, mental health, homelessness services facilities improvements and construction?

If the bonds are approved, they will be payable from taxes on property, or property ownership that are not subject to the limits of sections 11 and 11b, Article XI of the Oregon Constitution.

Summary: If approved, general obligation bonds would be issued to finance capital costs, which may include:

COMMUNITY SAFETY (at new Community Safety and Justice Campus):

- Construct modern correctional facility with dedicated areas for providing mental health and substance abuse treatment for adults in custody.
- Construct co-located sheriff and emergency operations facilities.

MENTAL HEALTH:

- Upgrade and expand children and family facility where therapists provide mental health treatment and wraparound services; deliver school-based programs.

HOMELESSNESS:

- Construct or renovate navigation resource center to provide services and support to people experiencing homelessness.

OTHER: Site improvements, furnishings and equipment, land, and bond issuance costs.

Public Bond Oversight Committee would provide accountability and review audits of bond projects and expenditures. Bonds may be issued in series; each series may mature not to exceed 31 years. Annual Bond levy rate is estimated to be \$0.55 per \$1,000 of assessed property value, or approximately \$142 per year on residential property with median assessed value of \$258,596. Actual levy rate may differ due to changes in interest rates and assessed value.

Explanatory Statement

In 2018, Benton County began a comprehensive review of its justice system, including data analysis, forecasting, community engagement, and review of evidence-based practices for improving outcomes. Findings included:

Benton County does not currently have an Emergency Operations Center to coordinate response for major events or disasters. The County currently rents or borrows space when coordinating trainings or exercises or responding to emergencies.

The current County jail was constructed in 1976 as a temporary holding facility and cannot be renovated to meet modern standards. In 2022, the facility was closed 22 times for lack of available beds. There are no dedicated areas for rehabilitative programs that address mental health, substance abuse, or education – services that reduce the percentage of repeat offenders.

The County's Child and Family Program provides treatment from a small, leased space that does not have capacity to accommodate growth of youth mental health services. Expanding into the County's Sunset Building would allow the program to serve more youth with fewer delays.

The Home, Opportunity, Planning, and Equity (HOPE) Advisory Board has recommended creation of a navigation center to address the complex issue of homelessness and create pathways into permanent housing. In partnership with the Corvallis Daytime Drop-in Center, the County would dedicate bond funds towards a homelessness services housing and navigation center, where multiple service organizations would provide individuals access to supports to prevent or transition out of homelessness.

If approved, bond proceeds may include capital investments in facilities that provide:

Community Safety and Emergency Operations

- Consolidation of County safety and justice services at a single campus, one mile north of downtown Corvallis, enhancing access, operational efficiency and emergency response.
- A co-located Sheriff's Office and Emergency Operations Center to improve coordination and ensure first responders have access to communications and resources during major emergencies and natural disasters.
- A new correctional facility with increased capacity (up to 120 beds) and dedicated areas to provide mental health and addiction services.

Mental Health

- Expanded and redesigned spaces for the Children and Family Program, which provides mental health treatment, wraparound services, and rural school-based programs, in a safe setting, for youth and families across Benton County.

Homelessness

- In partnership with Corvallis Daytime Drop-in Center, development of a homelessness services housing and navigation center, where people who are unsheltered can access comprehensive supports from co-located agencies and providers to navigate basic needs, receive wraparound mental and physical health services, and build pathways out of homelessness.

What would the bond cost?

The bond is estimated to cost \$0.55 per \$1,000 of assessed value annually. The typical homeowner would pay \$142 per year, based on the median assessed value in Benton County of \$258,596. Assessed value is typically lower than market value. Actual levy rate may vary due to changes in interest rates and assessed value.

Accountability

The County would establish a Public Bond Oversight Committee to ensure bond funds are used as approved by voters, including audits of bond projects and expenditures.

(Submitted by Benton County)

Benton County Measure 2-140 Argument in Favor

Benton County's current jail bed shortage creates very significant public safety concerns. As Circuit Court Judges, we see daily the impact of this shortage.

1. Individuals are currently released that need to be held in jail because they are at high risk to re-offend or fail to appear in Court.
2. The Court must remain credible with the sentences that are imposed. Frequently, defendants are released from their sentences to make room for other offenders.
3. Jail sanctions for participants in the Benton County Drug Treatment Court and for offenders on supervised probation are too often limited or non-existent. Research has shown that the immediacy of sanction has the greatest impact on holding someone accountable. Offenders that are not held accountable are much more likely to reoffend.
4. As many as 46% of inmates in our jail may suffer from mental illness. With our current jail, we can't provide continuity of treatment for these individuals. A modern jail facility will enhance our community's ability to better serve our inmate population.
5. A modern jail facility will allow for work release programs so non-violent offenders can be held accountable and still maintain employment.

A YES vote on Measure 2-140 ensures Benton County's ability to:

- Effectively prosecute criminal conduct and hold offenders accountable.
- Maintain adequate jail space to house dangerous criminals.
- Put a stop to the costs for all criminal justice partners associated with offenders who are released due to lack of jail beds and fail to appear in court. This process can be repeated numerous times before getting that person into Court.
- Provide more sentencing options, including work release.
- Provide continuity of trauma-informed mental health, drug and alcohol treatment to offenders in custody.

We urge you to vote YES on Measure 2-140 to show your continued support for the safety and welfare of everyone in Benton County.

(This information furnished by Honorable Locke A Williams, Honorable Joan A Demarest and Honorable Matthew J Donohue)

Benton County Measure 2-140 Argument in Favor

To keep our community safe, we need to make investments **now** to address our mental health and homelessness crises. And we need to prepare for the long-term safety of county residents in the event of a natural disaster or emergency.

- Measure 2-140 will **expand local treatment options** for families and youth experiencing a mental health crisis and help reduce homelessness by providing a safe, central place for services.
- Measure 2-140 will **make all of us safer** by ensuring first responders have the resources needed for a coordinated response to a natural disaster or emergency that may impact us and our neighbors.
- Measure 2-140 will **bring long-term cost savings** for our County by creating a local correctional facility with dedicated supports to address underlying mental health and addiction challenges that are contributing to jail bottlenecks and emergency room overcrowding.

For additional information, visit voteYESon2-140.com

Vote **YES** on Measure 2-140 to create better outcomes for all residents of Benton County.

Commissioner Xan Augerot
Commissioner Pat Malone
Commissioner Nancy Wyse

(This information furnished by Commissioners Xan Augerot, Pat Malone and Nancy Wyse)

Benton County Measure 2-140 Argument in Favor

The Benton County Sheriff and District Attorney urge you to vote YES on Measure 2-140

As community leaders, we recognize the need for improvement in our current justice system and how we serve the unique needs of Benton County. Measure 2-140 has been shaped by our community through an extensive, five year public process.

Did you know:

- The number of crimes being reported in Benton County has increased 28% in the last five years.
- The number of people released early from the jail because of limited capacity and outdated design, has increased 664% over the past eight years.

To keep Benton County safe, we need more than just a new jail. We also need to make investments to address our behavioral and mental health and homeless crises, and prepare for the long-term safety of our residents in the event of a natural disaster or emergency.

Measure 2-140 will provide funding for:

- A new Community Safety & Justice Campus to provide jail facilities to meet the needs of the community including behavioral health treatment and addiction recovery services.
- Expanded space for Benton County's Children & Family Program to provide treatment for youths and families who need mental health support and wraparound services.
- Funding for a homelessness and housing navigation center to provide access to services and help get people off the streets.
- An Emergency Operations Center to ensure first responders can effectively coordinate emergency response to keep us safe in the case of a disaster.

Help us support the modernization of county services and address the critical issues of public safety, behavioral and mental health, and homelessness by voting **YES on Measure 2-140**.

Sheriff Jef Van Arsdall
District Attorney John Haroldson

(This information furnished by Sheriff Jef Van Arsdall and District Attorney John Haroldson)

Benton County Measure 2-140 Argument in Favor

Vote YES for a new Correctional Facility

Benton County citizens have long recognized the need to replace the current correctional facility. The Benton County Jail was designed over fifty-years ago as a 27-bed booking/release facility and as a temporary holding facility for adults in custody undergoing trial at the adjacent Benton County Court House. A State of Oregon plan in the 1970's would have provided funding support to build "regional" jails to house adults from several counties awaiting trial or serving their sentences. That plan was abandoned due to recession and changing priorities.

Over the last 30 years, the facility has been modified to increase capacity to 40 beds, but it basically operates for its initial designed purpose plus holding inmates awaiting trial and those serving their sentences of one year or less.

Space constraints preclude programs to address offender needs such as substance abuse treatment, on-going education, employment support and skills building. Food preparation, exercise space, and medical treatment spaces are not adequate to meet current needs or national standards. The building also experiences recurring system failures due to decades of overuse.

For over 20 years we have rented 40+ beds from other Oregon counties to house our adult offenders resulting in added transportation expenses and separation from family and support systems.

Ballot Measure 2-140 will provide the necessary funding to correct the shortcomings of our current inadequate and aging correctional facility.

A new correctional facility will:

- meet current building safety codes and national jail standards,
- increase accountability by reducing early release due to over-crowding,
- provide the necessary space for "evidence based" treatment programs to address substance abuse and behavioral health conditions,
- keep adults in custody in the community and connected to family,
- increase inmate and corrections officer safety,
- result in reduced recidivism and enhanced community safety.

We strongly urge you to vote YES on Measure 2-140

(This information furnished by former Benton County Sheriffs Dave Cook, Diana Simpson, and Jim Swinyard)

Benton County Measure 2-140 Argument in Favor

Protect the Public. Change Lives.

Vote YES on Measure 2-140

Measure 2-140 will provide resources critical to strengthening the health and safety of our community. It is a much-needed investment to better protect all of us and to deliver difference-making services for people experiencing homelessness and those in crisis.

- Your YES vote **funds expanded facilities** to provide **mental health treatment and services for youth and families**, in a **safe, supportive environment** for children and families in need across Benton County.
- Your YES vote **invests in a homelessness Navigation Center** to provide those experiencing homelessness **access to services to help get people off the streets**.
- Your YES vote **creates an Emergency Operations Center** to ensure first responders can **effectively coordinate response in the case of a disaster**.
- Your YES vote builds a Community Safety & Justice Campus for a **safer courthouse and improved jail** providing **mental health treatment and addiction recovery** services to **help offenders change habits and build better lives**.

Helping others helps all of us.

Vote YES on Measure 2-140 to help address homelessness, mental health, and community safety, and create better outcomes for all of Benton County.

For more information go to [voteYESon2-140.com](https://www.voteYESon2-140.com)

(This information furnished by Catherine Biscoe, Cornelia Levy-Bencheson, Laura LH King, Hyatt Lytle, Andrew Struthers, Biff Traber, Tarsa Weikert, and Curtis Wright)

Benton County Measure 2-140 Argument in Favor

Together, our organizations strive to better peoples' lives by providing shelter, homes, community, life skills, and dignity. Our commitment to transformative justice means that we are all working to make change and create a more equitable future.

Every day, we collaborate with Benton County staff to ensure that we support people in the community so that they do not become entangled in the criminal legal system or end up incarcerated.

- The bond measure supports \$3 million toward a Navigation Center to provide more shelter and serve as a one-stop shop for services to help people out of homelessness. This is in direct partnership with the Corvallis Daytime Drop-in Center.
- It also includes up to \$1 million to house the Benton County Health Department Child & Family Mental Health Program in a space that includes therapy rooms designed for families, expanded space for group therapy and play therapy space to help the youngest kids struggling with mental health.
- The Benton County jail is noisy and chaotic. It is a horrible place for someone coping with mental health and substance use challenges. It is a barely accessible and dangerous place for people with developmental disabilities. It would never meet code or jail standards if it were built today.
- We need a more humane space to house adults in custody, where peoples' basic needs can be met, and where they have opportunities to engage in jail programs to help them foster new paths forward.

We urge you to vote **YES** on Measure 2-140.

(This information furnished by Corvallis Daytime Drop-in Center, Corvallis Housing First, Pathfinder Clubhouse, The Arc of Benton County, and Unity Shelter)

Benton County Measure 2-140 Argument in Favor

The Corvallis Chamber of Commerce urges you to vote YES on Measure 2-140

Measure 2-140 is a bond measure that increases and expands community safety, mental health, and homelessness service facilities. Locally, it is known as the Justice System Improvement Program (JSIP) and will involve the creation of a new facility just south of the HP campus on Highway 20.

We are supporting Measure 2-140 because we know we can do better for the community, especially our most vulnerable members. Right now, people in mental health crisis who are a threat to themselves and others are often left untreated because there is nowhere for them to go. Expanding access to mental health services will help us support residents and make our community safer. Providing better support for vulnerable individuals will contribute to the livability and vibrancy of our community.

Passing measure 2-140 will help create safe and supportive spaces for us to help those in crisis. It will help us address the underlying causes of homelessness and transition people off the streets. And it will support the effective rehabilitation of people in custody by expanding access to mental health care and addiction treatment, as well as save \$1.5 million a year in reduced prisoner transport and housing costs.

Measure 2-140 will provide funding for a homeless and housing navigation center; a new correctional facility with much-needed room for mental health support and addiction recovery services; expanded space for Benton County's Children & Family Program; and an emergency operations center to ensure better coordination during a natural disaster or other emergency.

Please vote YES on Measure 2-140.

It is a smart investment in the well-being, health, and safety of our community, helping to make life better for everyone in Benton County.

(This information furnished by The Corvallis Chamber of Commerce)

Benton County Measure 2-140 Argument in Favor

League of Women Voters of Corvallis Supports the Benton County Bond Levy

Our justice system is under severe stress and current resource limitations compromise community safety. The League of Women Voters of Corvallis urges voters to vote YES on the Bond Measure for Community Safety, Mental Health, and Homelessness Services Facilities (2-140), which will provide critical funds to invest in improvements in enforcement, justice, and coordinated services across law enforcement and social service agencies.

We have a crisis on our hands. With just 40 beds and over 3,000 offenders each year, current facilities do not have adequate capacity to house offenders, forcing the County to house nearly half of the County's average daily jail population in facilities outside the County. Measure 2-140 addresses the long-term needs for health and safety in our community.

Our community deserves better. Investing in social service programs and transitional housing lowers repeat offenses and improves long-term outcomes. Measure 2-140 is an investment in alternatives to jail and emergency rooms and brings a focus to underlying mental health and addiction concerns.

The League of Women Voters of Corvallis urges you to vote YES for Measure 2-140 and help to create safe and supportive spaces for everyone in our community.

(This information furnished by the League of Women Voters of Corvallis)

Benton County Measure 2-140 Argument in Favor

**Join us in supporting the health and safety of our
community!
Vote YES on Measure 2-140**

Senator Sara Gelser Blouin, State Representative Dan Rayfield,
State Representative David Gomberg

Mayor Bill Currier
Adair Village City Council

Alex Johnson II, Mayor of Albany, OR
Albany City Council

Mayor Charles Maughan
Corvallis City Council
Sarah Finger McDonald, Corvallis School Board, Vince Adams,
Corvallis School Board,
Sami Al-Abdrabbuh, Corvallis School Board

Mayor Chas Jones
Philomath City Council
Philomath School Board

Mayor Dan Sheets
Monroe City Council

Other Community Leaders

Catherine Biscoe
Robert Biscoe
Doug Boysen, President & CEO, Samaritan Health Services
Hal Brauner
Barbara Bull, former Corvallis City Councilor
Kate Caldwell, Retired E.D., CARDV
Miriam G. Cummins – LBL ESD Board Member
Jeffrey Davis
Harry Demarest
Merry Demarest
Frank Hann
Carla Holzworth
Hospital CEO Laura Hennum
Sara E. Ingle
Elizabeth Irish
Annabelle Jaramillo
Cornelia Levy-Bencheton
David M. Low
Julie J. Manning
Edward N. Provost
Andrew Struthers
Biff Traber
Clifford W. Trow
Jo Anne Trow
Robert J. Turngren, MD, Chief Physician Executive
Jessica Walker-Wyse
Curtis Wright
Penny York

Measure 2-140 helps fund a homeless and housing navigation center, an emergency operations center, expanded space for Benton County's Children & Family Program, and a new Community Safety & Justice Campus to provide jail facilities with mental health treatment and addiction recovery services, meeting our community's needs.

**Vote YES on Measure 2-140. Protect the Public.
Change Lives.**

(This information furnished by Citizens for a Better Justice System #22617)

Benton County Measure 2-140 Argument in Favor

**BENTON COUNTY DEMOCRATS
SUPPORT MEASURE 2-140**

The Benton County Democrats recognize the need for investments in Benton County's justice system. Infrastructure that is failing and severely out of date has led to conditions that are far away from "best practices" in criminal justice, conditions that some consider inhumane.

We need change

Measure 2-140 will make the needed change happen

This \$110 million bond measure will:

- Fund construction of a **correctional facility with capacity** for those in custody who need mental health care and other support.
- Co-fund a homeless navigation center, creating a one-stop shop to provide those experiencing homelessness **access to services to help get off the streets.**
- Expand **Children & Families Mental Health** services, to provide crisis and routine care to children, youth, and their families.
- Provide an **Emergency Operations Center** with appropriate communications technology and meeting space so in the event of flood, fire, or other emergency, our community is ready to take care of each other.

Due to a current lack of capacity in Benton County, those in custody are often bused hours away to other communities for holding. Increasing local capacity (as Measure 2-140 will do) saves the county taxpayers nearly \$1,500,000 a year in transportation costs and keeps people closer to their support and legal networks.

The Benton County Democrats understand the overwhelming need for increased mental health care in our community. Children and families currently have a three to four-month wait to receive mental health care. We need to do better. Measure 2-140 takes steps in the right direction.

Benton County Democrats **support Measure 2-140** and recognize the benefits of a functional and humane justice system in our community and the benefits of investments in mental health care and services for the unhoused.

VOTE YES ON MEASURE 2-140!

(This information furnished by Benton County Democrats)

Benton County Measure 2-140 Argument in Favor

Benton County Deputy Sheriff's Association
and local public safety partners are voting
YES for Measure 2-140

The following organizations have
joined us in backing **Measure 2-140**:

Albany Police Association
Corvallis Regional Communications Center Association
Linn County Deputy Sheriff's Association
OSU Public Safety Association
Philomath Police Personnel Association

We are supporting **Measure 2-140** due to the significant gaps in our current public safety system including an outdated, dysfunctional jail and lack of space to coordinate emergency operations and response. We can, and must do better for our community.

Measure 2-140 will address these shortcomings and allow us to more effectively serve the community by providing funding for:

- An **Emergency Operations Center** equipped with the resources first responders need in the event of a natural disaster or major emergency
- A modern correctional facility to provide **effective rehabilitation** of people in custody with expanded access to **mental health care** and **addiction treatment services**
- **Savings of \$1.5M** per year in costs associated with transporting and housing offenders to other counties

And more!

The time to invest in the safety of our community is now!
Please join us in voting **YES for Measure 2-140**

(This information furnished by Benton County Deputy Sheriff's Association)

Benton County Measure 2-140 Argument in Favor

Sami Al-Abdrabbuh supports measure 2-140!

Join me in building a better Benton County by supporting Measure 2-140. This funding package addresses some of our community's most pressing challenges, and it's our best opportunity to create a brighter future for all of us.

This election, a vote YES for Measure 2-140 will help us get closer to addressing some of the systemic injustices in our community.

Here are some reasons to support Measure 2-140:

- **Accessible Children's Mental Health Resources:** Currently, children and families face a 3-4 month wait time to receive the support they need. Measure 2-140 will expand the children's mental health program, providing faster access to vital services.
- **Coordinated Emergency Response:** An Emergency Operations Center is crucial to respond to major events and natural disasters. With Measure 2-140, we can build an Emergency Operations Center and improve emergency response.
- **Meaningful Help for People in Custody:** Let's provide better conditions for those in custody and reduce the rate of re-offending individuals. With Measure 2-140, we can save \$1.5M spent annually on transporting and housing people out of the county. Instead, we can provide access to life-improving services such as behavioral health support.
- **Systemic Approach to Housing Insecurity:** A homeless navigation center will serve as a "one stop shop" location with access to service providers and case management, health care, behavioral healthcare, employment resources, and affordable housing services. This will provide a more systemic approach to housing insecurity.

By investing in systemic solutions that make a real difference in people's lives, we can create a more equitable, resilient, and safer community. This measure is our best opportunity to make local, systemic, and meaningful change.

Join me in voting YES on Measure 2-140. Let's build a better Benton County for ourselves and for future generations!

(This information furnished by Sami Al-Abdrabbuh, PhD)

Benton County Measure 2-140 Argument in Favor

Measure 2-140 is especially important to us as community emergency response and preparedness leaders and volunteers. In any disaster, it is vital to have a central location for emergency response coordination. The county has activated its Emergency Operations Center (EOC) five times since 2019 and struggled to find an appropriate location each time. And we know that the pace of emergency activations is increasing, as we continue to experience the effects of climate change.

Measure 2-140 will help address a major gap in our current public safety system – the lack of an effective Emergency Operations Center. By creating this center, we can ensure first responders have the resources they need to manage critical situations in their efforts to keep our communities safe in the event of a natural disaster or major emergency, and properly integrate trained community volunteers into emergency response efforts.

The new state-of-the-art Emergency Operations Center, co-located with the Sheriff's Office, would:

- Provide **enough space for multiple teams** to work in parallel & coordinate as needed.
- Include **storage space** for emergency food supplies, protective gear, volunteer equipment and for donations.
- Be furnished with **radio and digital communications** necessary to manage responders in the field and to facilitate virtual meetings with other emergency services.
- Be supplied with **auxiliary power** necessary for seamless operations in case of outages.
- Allow for **greater volunteer participation and involvement** due to advanced preparedness training and certification programs.
- **Double as a training center** and meeting rooms.

Please join us in supporting Measure 2-140! Learn more at voteYESon2-140.com.

Community emergency preparedness volunteers:

Heidi Hagler
Ann Eissing
Steven Napack
Josiah Fisher
Nance Kiesling
Dick Mossey
Cheslah Barkdoll
Walter Pebley

Brandon Christensen, CERT trainer and FEMA-certified Master Exercise Practitioner

(This information furnished by Citizens for a Better Justice System)

Benton County Measure 2-140 Argument in Favor

We, your friends and neighbors, urge you to vote YES on Measure 2-140!

Our small, substandard jail doesn't allow for the fair treatment we expect from our criminal justice system. Coordination with supportive services is problematic because the jail isn't designed or scaled to offer effective services. And too many inmates are placed in jails outside the area, separated from family and friends, because we lack the room.

A humane, effective, and just criminal justice system in Benton County:

- Makes use of time in jail and the transition back into the community as opportunities to provide essential services. Behavioral health services and access to housing, child-care, and jobs, make it more likely inmates won't return and can build healthy lives.
- Allows inmates to stay here in Benton County because support from family and friends is essential to success.
- Fairly and consistently holds people accountable for their behavior and keeps our community safe because jail space is available when needed.
- Treats mental illness and homelessness as challenges requiring services, supports, and solutions, not punishment.

But this is not the system we have.

It's time to support a criminal justice system that we know works and reflects the values of our community. **Vote yes on Measure 2-140!**

Jim Moorefield
Jo Moorefield
Aleita Hass-Holcombe
Andrea Myhre
Melissa Carter-Goodrum
Ellen Tappan
John Tappan
Judy Hill, retired
Ted Wilson
Elizabeth M. Bailey
Helga D. Stevens
Rick Borsten
Kim Crane
Vince Adams, Corvallis School Board
Anne Schuster, Former Benton County Commissioner

(This information furnished by Jim Moorefield)

Benton County Measure 2-140 Argument in Opposition

Taxes are High Enough - Use our money wisely.

VOTE NO on the bond for Jail, Community Safety, Mental Health and Homeless Services.

Don't be fooled, this type of Bond Measure was voted down 3 times in the past and is now being put up for vote again.

- **Only 4% of funding** is currently committed for other purposes like homeless.
- **The BOND MEASURE IS CONFUSINGLY WORDED. The new Mental Health Crisis Center in downtown Corvallis does not need this Bond measure to be built.** It is fully funded now by State and Federal sources.

Property taxes for 2022 in Benton County increased by 3.2 - 4.9% in 2022 depending on where you live. This bond measure may alone ADD an estimated 3.1-4.3% of new taxes to your property tax bill.

- **Do you really want an estimated 7.7 to 7.8% property tax increase in 2023?**

This will increase rental costs too and landlords will simply pass these new costs along.

- **Is your rent high enough now?**
- **In the midst of a housing crisis, making Benton County less affordable hurts everyone, homeowners and renters alike.**

The citizens of Corvallis are being asked to fund a new Sheriff's operations building. **Corvallis is primarily served by the police department, not the Sheriff.**

- Will the County convince Corvallis to buy out the Sheriff's space in the old office? **Corvallis voters are being asked to pay twice for the same space!**

Please Vote NO and defeat 2-140, the Justice Center Bond Measure.

(This information furnished by Bill Kughn)

Benton County Measure 2-140 Argument in Opposition

Benton County Wants Responsible Treatment of the Environment

Vote NO on Measure 2-140

Construction of the Justice Center will **destroy 29+ acres of crop land** by the use of **Eminent Domain** from an unwilling seller...**land that will never produce food again.**

The Benton County Commissioners **signed a resolution** recognizing the **Climate Crisis** and **setting a limit of 1661 MTCO2 per year on Carbon Emissions** in the County.

- But then they voted to build a new **159,000 square foot** Jail, Sheriff's Operations, and Courthouse. The construction will **create at least an estimated 11,467 MTCO2**. **That is 690% above the emissions the Commissioners signed a resolution to cap**, the equivalent of putting 2,492 cars on the road for an entire year.
- The **long term heating and cooling** of the new facility will exceed that emission goal **by an estimated 143%**, the equivalent of 542 cars on the road for a year.
- The **CO2 emissions saved** by all the current **solar panels** owned by the Benton County government is **120 MTCO2**. **This benefit is negated 95-fold by the construction and 20-fold by long-term heating and cooling.**
- There are 3215' of roads and over 350 parking spaces planned. **memorializing the long term use of cars.**

Don't make Benton County Government one of the most carbon polluting in the State by approving a massive County construction project.

The county can do better by using existing spaces.

Think GLOBALLY, act LOCALLY.

Vote no on the bond measure.

(This information furnished by Phil Ermer, Professional Engineer)

Benton County Measure 2-140 Argument in Opposition

Our property taxes annually increase at a rate of 3% -- caused by an annual increase in the assessed value -- plus any percentage change in the tax rate. The Justice System Improvement Program Bond Measure will increase our tax rates (in dollars per assessed value) by approximately \$0.55, an increase that will last until the bond is paid off. That increase will first appear in our October 2024 tax bills. The median (by tax code area) property tax will increase by 9.82% in 2024 when compared to our 2022 property taxes.

The bond essentially provides money to purchase facilities. However, there will be operations and maintenance costs that have not been brought to the taxpayers' attention. Will the current property taxes we pay Benton County be enough to operate and maintain these facilities over their lifetime? Or will a levy have to be imposed to fund the operation and maintenance costs? The taxpayer has not been informed about the substantial costs of these facilities over their lifetime.

There are many people in Benton County who bought their property many years ago and are having trouble affording the increasing property taxes. This is a serious problem for retirees on a fixed income.

Please keep voting down these bond measures until the County comes up with a least cost system improvement plan over the facilities life cycle.

(This information furnished by John H. Detweiler)

Benton County Measure 2-140 Argument in Opposition

ALL Benton County residents will be impacted by Justice System Improvement Program bond.

Did you know?

- Rents will increase as landlord's property taxes will increase.
- Property owner's property taxes will increase at approximately .55 cents per \$1,000 assessed dollar value until the bond is paid for, in about 20 years.
- Currently, we pay .90 cents per \$1,000 assessed dollar value for the Public Health and Safety Services levy that has been renewed every 5 years since 2007.
- The Public Health and Safety Services levy has been voted and renewed every 5 years since 2007.

We are sitting at 8-9% inflation and consumer goods have increased 100-to-200%. How can Benton County expect us to pay more in property taxes for this bond? Benton County families are taxed out!

Expect the cost of goods locally to increase. Why? When a business' property taxes increase, they will pass that increased cost to we the consumer.

We are looking at consumer food prices to continue increasing. The USDA states the Consumer Price Index for food in 2023 is predicted to increase 4.7% to 16.7%.

Important points to consider:

- Three times, in 20 years, Benton County has tried to pass similar bonds and have failed.
- The Benton County Crisis Center is already paid for.
- Less than 4% of this bond goes to help the homelessness.
- Why are we not using available commercial space?

Did you know Benton County ranks in the top 5 of highest property tax rates in the state (tax-rates.org)?

Passing this bond will continue to hurt our retirees, young families and college students who are living on limited incomes.

If this bond passes, as a renter, don't blame your landlord when your rent increases, blame Benton County.

We are already taxed enough in Benton County. **VOTE NO on the Justice System Improvement Bond!**

USDA Price Index <https://www.ers.usda.gov/data-products/food-price-outlook/summary-findings> (02/22/2023)

(This information furnished by Robin and Jeff Besotes)

Palestine Rural Fire Protection District Measure 2-139

NO ARGUMENTS FOR OR AGAINST
THIS MEASURE WERE FILED

Ballot Title

Caption: Measure proposing renewing five-year operating local option tax levy.

Question: Shall District impose \$.9707 per \$1,000 of assessed value for five years beginning in 2023-2024 for fire protection. This measure renews current local option taxes.

Summary: Palestine-Rural Fire Protection District has faced an increase in the cost of fire protection service. Due to these increased costs it is necessary to request a renewal of the five-year operating local option tax levy of \$.9707 per \$1,000 of assessed value to finance the operations of the District beginning in tax year 2023-2024. The estimated tax raised by year would be \$109,734 for 2023-24, \$114,123 for 2024-25, \$118,688 for 2025-26, \$123,436 for 2026-27, \$128,373 for 2027-28 for a total of \$594,354 over 5 years. The estimated tax cost for this measure is an estimate only based on the best information available from the county assessor at the time of the estimate.

Explanatory Statement

Palestine Rural Fire Protection District's financial resources have been rapidly depleting in the last couple of years due to an increase in the cost of fire protection service. Therefore, it is necessary to request a renewal of the five-year operating local option tax levy of \$.9707 per \$1,000 of assessed value to finance the operations of the District beginning in tax year 2023-2024. The estimated tax raised by year would be \$109,734 for 2023-24, \$114,123 for 2024-25, \$118,688 for 2025-26, \$123,436 for 2026-27, \$128,373 for 2027-28 for a total of \$594,354 over 5 years. The estimated tax cost for this measure is an estimate only based on the best information available from the county assessor at the time of the estimate.

(Submitted by Palestine Rural Fire Protection District)

Registering to Vote

To vote in Oregon you need to be registered in the county where you reside.

You can register if you can answer yes to these three questions:

- Are you a resident of Oregon?
- Are you a US citizen?
- Are you at least 16 years of age?

If you are 16 or 17 years of age, you will **not** receive a ballot until an election occurs on or after your 18th birthday.

How to register

You can register to vote online at www.oregonvotes.gov or you can get a voter registration form at any of the following places:

- Benton County Elections Office
- any county elections office
- the Secretary of State's Office
- some state agencies such as the Division of Motor Vehicles (DMV)
- a voter registration drive

You can fill the form out in person or send it in by US mail. You can also print out a registration form online at: www.oregonvotes.gov.

What information is required to register?

To complete your registration you will provide your:

- full legal name
- home address
- date of birth
- signature
- valid identification

Updating your voter registration

Once you have registered, you are responsible for keeping your information up to date. You can do this online at www.oregonvotes.gov or by completing and returning a voter registration form with the new information. You should update your registration if you do any of the following:

- change your home address
- change your mailing address
- change your name
- change your signature
- want to change or select a political party

Absentee Voting

In the event you will be out of town during the election and need an absentee ballot, please visit our website at:

www.co.benton.or.us/elections/page/register-update-cancel-and-absentee

Oregon Voter Registration Form



- You may use this form to register to vote or update your information
1. Print with a black or blue pen to complete the form.
 2. Sign the form.
 3. Mail or drop off the form at your County Elections Office.

You may also use online voter resources to register or update your registration status.

oregonvotes.gov

qualifications

Are you a citizen of the United States of America? yes no
 Are you at least 16 years of age? yes no

! If you mark no in response to either of these questions, do not complete this form.

personal information *required information

last name* first* middle
 Oregon residence address, city and zip code (include apt. or space number)*
 date of birth (month/day/year)* county of residence
 phone email
 mailing address, including city, state and zip code (required if different than residence)

Oregon Driver's License/ID number

Provide a valid **Oregon Driver's License, Permit or ID:**

I do not have a valid **Oregon Driver's License/Permit/ID.**
 The last 4 digits of my Social Security Number (SSN) are:

x x x - x x -

I do not have a valid Oregon Driver's License/Permit/ID or a SSN. I have attached a copy of **acceptable identification.**

political party

- Not a member of a party
- Constitution
- Democratic
- Independent
- Libertarian
- Pacific Green
- Progressive
- Republican
- Working Families
- Other _____

signature I swear or affirm that I am qualified to be an elector and I have told the truth on this registration.

sign here _____ date today _____

! If you sign this card and know it to be false, you can be fined up to \$125,000 and/or imprisoned for up to 5 years.

registration updates Complete this section if you are updating your information.

previous registration name previous county and state
 home address on previous registration date of birth (month/day/year)

BENTON COUNTY OFFICIAL BALLOT DROP BOX LOCATIONS

Benton County Elections & Passports Office

Kalapuya Building
4500 SW Research Way, 2nd Floor, Corvallis OR 97333
541-766-6756
Mon thru Fri 8:00 am to 5:00 pm
Election Day 7:00 am to 8:00 pm

24-HOUR OUTDOOR BALLOT DROP BOXES

Kalapuya Building

Drop box in parking lot
4500 SW Research Way, Corvallis OR 97333

OSU Gill Coliseum

Corner of Ralph Miller Ln and 26th St
660 SW 26th St, Corvallis OR 97331

Lincoln Health Center

Drop box at center of parking lot
121 SE Viewmont Ave, Corvallis OR 97333

Corvallis Public Library

Drop box next to bike rack at corner of
6th St and Monroe Ave
645 NW Monroe Ave, Corvallis OR 97330

Benton County Courthouse

Courthouse lawn on 4th St
120 NW 4th St, Corvallis OR 97330

Law Enforcement Building

Near entrance on 5th St
180 NW 5th St, Corvallis OR 97330

LBCC Benton Center

Drop box near main entrance
757 NW Polk Ave, Corvallis OR 97330

Corvallis Community Center (C3)

Drop box near main entrance
2601 NW Tyler Ave, Corvallis OR 97330

Wells Fargo Bank

Timberhill Shopping Center
2543 NW Kings Blvd, Corvallis OR 97330

City Limits Market

Drop box near main entrance
5800 NW Hwy 99W, Corvallis OR 97330

Adair Village City Hall

Drop box at City Hall parking lot entrance
6030 NE William R Carr Ave
Adair Village OR 97330

North Albany Shopping Center

Drop box in front of IGA Supermarket
621 Hickory Ave NW, Albany OR 97321

Philomath Community Library

Drop box near main entrance
1050 Applegate St, Philomath OR 97370

Monroe Community Library

Drop box at the entrance to the drive-up
book drop in parking lot
380 N 5th St, Monroe OR 97456

Alsea Community Library

Drop box on parking lot sidewalk
19192 Alsea Hwy, Alsea OR 97324

Benton County Elections
4500 SW Research Way, 2nd Floor
Corvallis, OR 97333

NONPROFIT
CAR-RT SORT
U.S. Postage
PAID
Portland, OR
Permit No. 692



RESIDENTIAL CUSTOMER

OFFICIAL BENTON COUNTY
VOTERS' PAMPHLET
MAY 16, 2023 SPECIAL ELECTION

