



**Benton
County**
OREGON

OFFICIAL VOTERS' PAMPHLET

**Special Election
November 7, 2023**

The publication and distribution of this pamphlet is coordinated by the County Clerk. The measure information within was provided by City of Corvallis and other interested parties that chose to participate in this portion of the election process.



Benton County - Kalapuya Building
4500 SW Research Way, 2nd Floor
Corvallis, OR 97333

Phone: 541-766-6756

E-Mail: elections@bentoncountyor.gov

Website: www.co.benton.or.us/elections



**Benton
County**

**BOARD OF
COMMISSIONERS**

Board of Commissioners

Office: (541) 766-6800

Fax: (541) 766-6893

4500 SW Research Way

PO Box 3020

Corvallis, OR 97339-3020

co.benton.or.us/boc

Dear Benton County Voter:

Tuesday, November 7, 2023, is a Special Election for a City of Corvallis referred "City Livability Services Local Option Levy" measure. As a registered voter in the City of Corvallis, you will have the opportunity to vote on this measure.

The County voters' pamphlet provides those in-support-of or in-opposition-to proposed measure an opportunity to submit arguments for or against the measure. This pamphlet includes the complete text of the local option measure, arguments filed, and additional election information. This pamphlet is also made available online at www.co.benton.or.us/elections.

Voters have the option of returning their voted ballots by mail, postmarked no later than Election Day, at any Official Ballot Drop Site in the State of Oregon or in-person at any Oregon County Elections Office on or before 8:00 PM on Election Day, Tuesday, November 7, 2023.

Please see the last page of this pamphlet for a list of Official Ballot Drop Sites that will be open in Corvallis for this election. If you need additional information or assistance, you may reach the Elections Office by email: elections@bentoncountyor.gov; phone: (541) 766-6756; or in-person at 4500 SW Research Way, 2nd Floor, in Corvallis.

Sincerely,

Nancy V. Wyse

Commissioner

Xanthippe Augerot

Commissioner Vice-Chair

Pat Malone

Commissioner Chair

TABLE OF CONTENTS

2	Letter from the Commissioners
3	Table of Contents
4	Voting Instructions
5	Translations النسخة المترجمة , 材料翻译, 한국어 번역물, Материалы на других языках, traducciones, คำแปลเนื้อหาเป็นภาษาไทย, Các bản dịch
6	Measure 2-141 City livability services local option levy
7-11	2-141 Arguments in Favor
11	2-141 Argument in Opposition
12	Registering to Vote and Absentee Voting
13	Voter Registration Form
14	Absentee Application Form
15	Benton County Official Ballot Drop Sites

Only City of Corvallis voters will receive ballots for this election.

Measure arguments within this pamphlet are **optional** filings.

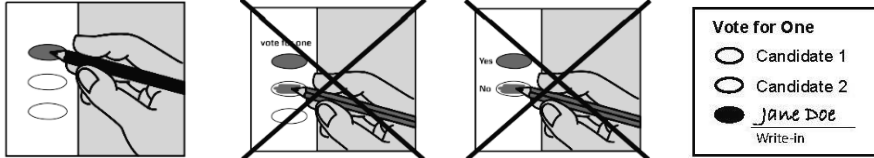
Voting Instructions

Your Ballot Packet Contains

- A printed ballot on which you may vote
- A prepaid and pre-addressed signature return envelope in which to return your ballot

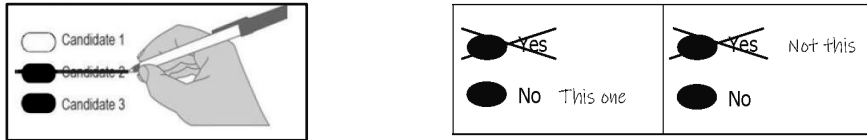
Voting Your Ballot

- Use a black or blue pen to fill in the ovals next to your choices.
- You do not have to vote on all contests.
- If you vote for more candidates than allowed or if you vote both Yes and No on a measure, it is called an overvote and your vote will not count for that candidate or measure.
- To write-in a candidate who does not appear on your ballot, completely darken the oval to the left of the write-in line and write the full name of the candidate on that line.



Correcting Your Ballot

If you make an error on your ballot, you may correct it yourself. See examples below:

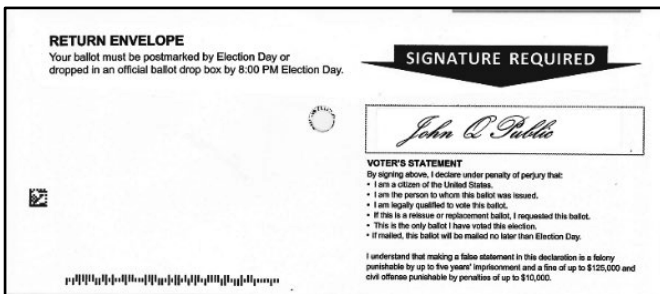


Contact Benton County Elections to request a replacement ballot if:

- You are unable to correct a mistake to make your intended choice clear
- Your ballot is damaged or spoiled
- You lose your ballot

Returning Your Voted Ballot

- **SIGN** the voters' statement on the back of the signature return envelope. Your ballot will not be counted if your return envelope is not signed.
- Insert ballot into the signed return envelope.
- Seal the signed return envelope.
- **Mail no later than November 7, 2023.** It must be postmarked by Election Day and received no later than seven days after Election Day.
- Or place the signed return envelope in an **Oregon Official Ballot Drop Box by 8:00 PM PST November 7, 2023.**



Attention!

Selected portions of this county voters' pamphlet are available in Arabic, Simplified Chinese, Korean, Russian, Spanish, Thai, and Vietnamese. These translations can be found online at oregonvotes.gov/BentonVP

تتوفر أجزاء مختارة من كتيبات الناخبين لهذه المقاطعة باللغة العربية يمكن العثور على هذه الكتيبات عبر الإنترنت على [.oregonvotes.gov/elections/BentonVP](https://oregonvotes.gov/elections/BentonVP)

本县选民手册的部分内容提供简体中文版本。可以访问 oregonvotes.gov/BentonVP 获取译本。

주 유권자 팜플렛의 선택된 부분은 한국어 준비되어 있습니다. 번역은 온라인 oregonvotes.gov/BentonVP 에서 찾아볼 수 있습니다.

Отдельные части брошюр избирателей этого округа доступны на русском языке. С данными переводами можно ознакомиться в Интернете по адресу: oregonvotes.gov/BentonVP

Algunas secciones de este folleto para votantes del condado están disponibles en español. Estas traducciones están disponibles en línea en oregonvotes.gov/BentonVP

จลสารผู้ลงคะแนนในเขตนี้บางส่วนจัดทำเป็นภาษาไทย ฉบับแปลเหล่านี้สามารถพบได้ทางออนไลน์ที่เว็บไซต์ oregonvotes.gov/BentonVP

Các phần được chọn trong tập thông tin cho cử tri quận này có bản ngôn ngữ tiếng Việt. Bản dịch có thể xem trực tuyến tại oregonvotes.gov/BentonVP

Returning Your Voted Ballot

- **Drop** your ballot in an official Oregon ballot drop box **by 8:00 PM PST Election Day.**
- **Mail** your ballot so it is **postmarked by Election Day** and it must be **received no later than seven days after Election Day.**



City of Corvallis Measure 2-141

Ballot Title

Caption: CITY LIVABILITY SERVICES LOCAL OPTION LEVY

Question: Shall Corvallis impose \$1.07 per \$1,000 of assessed value, for five years beginning July 1, 2024, for livability services?

This measure may cause property taxes to increase more than three percent.

Summary: The City of Corvallis would use the tax revenue from this measure for services that enhance City livability and culture. Revenue from this measure would be restricted in the following amounts or percentages (with FY 2024-2025 estimated dollar amounts):

- \$480,000 for annual grants allocated to local social service agencies (\$480,000).

- 51.9% of the remaining revenue (after the \$480,000 allocation) would be allocated to services at the Corvallis Public Library, including open days and hours, materials, programs, and outreach (\$3,137,511);

- 48.1% of the remaining revenue (after the \$480,000 allocation) would be allocated to services at Parks & Recreation, including recreation programs, Osborn Aquatic Center, Corvallis Community Center, the Majestic Theatre, and Parks services and maintenance (\$2,907,789);

- By fiscal year, this levy is estimated to raise:

24-25	\$6,525,300
25-26	6,719,800
26-27	6,920,100
27-28	7,126,600
28-29	7,339,500
Total	\$34,631,300

Explanatory Statement

The Measure would allow the City of Corvallis to levy \$1.07 per \$1,000 of assessed value for five years for the purpose of supporting operations of the Corvallis Public Library (51.9%) and the Parks and Recreation Department (48.1%), and to provide grant funding to local social service agencies (\$480,000). This proposed levy would be at the same rate of \$1.07 per thousand as the current 2019 City Livability Levy that will expire on June 30, 2024. The services and programs to be funded by this measure may include, but are not limited to:

- Deliver community programs for all ages, including youth day camps, storytimes, family-friendly events, summer reading programs, fitness, enrichment and arts classes, computer literacy classes, teen- and senior-focused programs, volunteer opportunities, and life-saving swim lessons.
- Offer creative cultural and performing arts programming, outreach to diverse populations, and engage with community members in development of service offerings.
- Offer scholarships to income-eligible individuals, allowing an equity-focused delivery of community programs.
- Maintain grounds and landscaping, provide safety checks on play equipment, plant new trees to increase tree canopy, and provide sanitation and hygiene services.
- Manage over 2,000 acres of parks and natural areas, including wildlife habitat, invasive species management, and public access to recreational trails.
- Offer an expansive and diverse collection of library materials in a variety of formats for all ages.
- Provide open hours of service at Corvallis Public Library, seven days a week.
- Provide the community a place of refuge during extreme weather events by designating certain facilities to act as a cooling or warming center.
- Prevents closure of the Corvallis Public Library, Corvallis Community Center, the Majestic Theatre, and Osborn Aquatic Center.
- Provide \$480,000 each year for grant funds supporting nonprofit social service organizations to provide services or resources that help meet basic human needs, such as shelter and support services, food security, intervention and prevention services, childcare, mental and physical health services, family support, transportation, and emergency funds.

The levy tax rate of \$1.07 per \$1,000 assessed value is estimated to cost the typical homeowner the equivalent of approximately \$25 per month in the first year of the levy, based on the average (mean) residential property, and would collect approximately \$6.5 million in the first year, with an estimated average of \$6.9 million collected each year for the five-year period.

(Submitted by City of Corvallis)

City of Corvallis Measure 2-141 Argument in Favor

VOTE YES FOR MEASURE 2-141. VOTE YES FOR OUR LIBRARY.

In 1899, a group of Corvallis women began our public library. In the ensuing 124 years, the Corvallis Library has become nationally recognized. It was recently named one of the Star Libraries of America (a recognition given only to about 350 of the 17,000+ public libraries in the U.S.).

With an average of 1,100 visits per day, our library is one of the nation's most heavily used for its size. Most importantly, it is a service that is open to all without regard to age, background, income, or circumstances and is the true great equalizer of our society.

Citizen support in countless ways is the reason for the wide range of excellent services and events offered by our library, along with a top-notch staff.

Our library is financed by our taxes. The community's love for our library has traditionally provided strong tax support.

The proposed levy will retain the current level of service, hours, and materials collection purchases.

Failure of the levy would curtail Sunday or Monday as well as evening hours. It would eliminate home delivery service and sharply reduce materials purchases, outreach, and programming.

It would also mean significant cuts in the support and services our library provides to the Corvallis School District and its educators and students.

VOTE YES to maintain the quality and availability of the services provided to the community by the Corvallis Public Library, one of the jewels in Corvallis' crown.

BE A PART OF THE CORVALLIS TRADITION VOTE YES FOR MEASURE 2-141 KEEP OUR LIBRARY OPEN AND HEALTHY

(This information furnished by the
Corvallis-Benton County Public Library Foundation)

City of Corvallis Measure 2-141 Argument in Favor

Measure 2-141 is vital to a Livable and Beautiful Corvallis

Measure 2-141 will continue to fund Corvallis' large and beautiful park network, our award-winning and industry leading library, and will continue support of social service agencies.

Measure 2-141 renews an already existing levy at the same rate of \$1.07 per \$1,000 of assessed value of your home.

Measure 2-141 would provide \$480,000 annually to local social service agencies (currently through a partnership with United Way). It would then provide 51.9% of the remaining funds to the Corvallis Library (about \$3,137,511 per year) and the last 48.1% (\$2,907,789) to the Corvallis Parks and Recreation Department.

This money keeps beloved facilities like the Corvallis Public Library, Osborn Aquatic Center, The Majestic Theatre, and the Corvallis Community Center (C3) open and running.

What do we have now?

- An award-winning library that has ~1,100 daily visitors and provides ~3,200 deliveries a month.
- Osborn Aquatic Center which has over 230,000 annual and 50 water classes weekly.
- The Majestic Theatre with over 130 performances a year and drawing over 80,000 hours a year of volunteer service.

What would we lose if Measure 2-141 fails?

- The library would **close on Sundays and Mondays** with no evening service. Residential delivery would be limited to only homebound residents and literacy and education **programs would be cut**.
- Hours, staffing, and programs at all parks and recreation buildings would be **significantly reduced, if not eliminated**.

Measure 2-141 does not raise your tax rate!

Keep Corvallis an amazing place to live
Support our Parks
Support our Library

Vote YES on Measure 2-141

learn more at friendsofcorvallis.org

(This information furnished by Friends of Corvallis (23041))

City of Corvallis Measure 2-141 Argument in Favor

The Corvallis City Council supports a yes vote on Measure 2-141

Measure 2-141 will not raise your tax rate!

Please join the Mayor and all nine Corvallis City Councilors in voting [Yes on Measure 2-141](#)

Currently, the Corvallis Library and Corvallis Parks and Recreation Department draw much of their funding from a levy that the voters of Corvallis renewed overwhelmingly in 2019. This levy, which also provides grants for local social service agencies, expires in 2024.

Measure 2-141 would renew that levy with no tax rate increase.

In order for those programs to continue, and in order to maintain the level of service Corvallis currently enjoys, we need to renew our City Livability Services Local Option Levy at the same rate of \$1.07 per \$1,000 of assessed value.

With a renewed levy:

- Low-cost library and recreation programs will continue
- The library will stay open seven days a week
- Money will continue to go to local social service agencies to support those with great need in our community

No renewed levy:

- A *significant* reduction Library services and open hours
- Many recreation programs will be cut and park maintenance will be reduced
- Operation hours at Osborn Aquatic Center, the Corvallis Community Center, and the Majestic Theatre will be reduced

Please join your Corvallis Mayor and City Councilors in voting YES on Measure 2-141

Corvallis Mayor
Charles Maughan

Corvallis City Councilors

Jan Napack	Gabe Shepherd	Paul Shaffer
Briae Lewis	Charlyn Ellis	Tracey Yee
Hyatt Lytle	Laurie Chaplen	Tony Cadena

Read more about the levy renewal at the City of Corvallis website or at <https://www.friendsofcorvallis.org>

(This information furnished by Friends of Corvallis (23041))

City of Corvallis Measure 2-141 Argument in Favor

Benton County Commissioners urge a yes vote on Measure 2-141

Measure 2-141 renews a tax (*with no rate increase*) that supports the Corvallis Public Library and the Corvallis Parks and Recreation Department. The measure will also provide \$480,000 annually to local nonprofits and social service organizations.

The library in downtown Corvallis is part of a library network that serves all of Benton County, with branches in Alsea, Philomath, and Monroe. These libraries share resources and materials.

A "Yes" vote on Measure 2-141 would **support a stable budget** for buying new books and materials for the Corvallis library.

A "No" vote would cut the budget for new books and materials by over 50% and reduce library open hours.

Our library and the services, events, and materials it offers is one of the best things about Corvallis and Benton County. They have over 300,000 visitors annually and check out over 25,000 items a week.

Please support our community's library and our parks by voting **Yes on Measure 2-141**.

Please join all three Benton County Commissioners in supporting

Yes on Measure 2-141

Pat Malone, Benton County Commissioner
Xan Augerot, Benton County Commissioner
Nancy Wyse, Benton County Commissioner

Measure 2-141 does not raise your tax rate!

(This information furnished by Friends of Corvallis (23041))

City of Corvallis
Measure 2-141
Argument in Favor

Measure 2-141 will support our children

Measure 2-141 will keep funding Corvallis city parks and the library **at the same rate** by renewing an already existing levy.

Many children in our community and beyond make use of the many services provided by the Corvallis library and our parks and recreation system. These services include:

- Access to computers and printing at the library
- Summer parks activities
- Library story time
- Otter Beach at Osborn Aquatic Center
- Acting in or attending plays at The Majestic Theatre
- Classes and day camps at the Corvallis Community Center (C3)

If Measure 2-141 fails, many of these programs will be significantly cut or eliminated

Measure 2-141 does not increase the tax rate of this levy from its current \$1.07 per \$1,000 assessed value. This means there will be no tax rate increase in order to keep these services that are loved by our community, especially our children.

Please join these Corvallis School Board Members in supporting a Yes vote on Measure 2-141 and renewing the Corvallis Livability levy:

Luhui Whitebear, Corvallis School Board Member
 Sarah Finger McDonald, Corvallis School Board Member
 Shauna Tominey, Corvallis School Board Member
 Sami Al-Abdrabbuh, Corvallis School Board Member

Vote YES on Measure 2-141

(This information furnished by Friends of Corvallis (23041))

City of Corvallis
Measure 2-141
Argument in Favor

Local leaders and community members support Measure 2-141

Measure 2-141 renews a levy that funds the Corvallis Parks and Recreation Department, Library Department, and provides \$480,000 annually to local nonprofits and social service organizations. Some of the organizations that have recently received a piece of this social services funding include:

Unity Shelter; South Corvallis Food Bank; Vina Moses; the Corvallis Daytime Drop-in Center; Jackson Street Youth Center; and the Corvallis Environmental Center

You can read all about how the social services funding is allocated at the City of Corvallis website.

These leaders, local businesses, and community members urge your support of Measure 2-141

Biff Traber, former Mayor of Corvallis
 Julie Manning, former Mayor of Corvallis
 Laura and Mark Worden
 Morgan Orr, Owner of the Brass Monkey

Squirrel's Tavern
 Common Fields

Learn more about the levy and what it funds at
<https://www.friendsofcorvallis.org>

(This information furnished by Friends of Corvallis (23041))

City of Corvallis
Measure 2-141
Argument in Favor

BENTON COUNTY DEMOCRATS
SUPPORT MEASURE 2-141

The Benton County Democrats believe strongly in the power of education and the importance of local libraries to the health of a community. Benton County residents are well served by the Corvallis/Benton County Library system and, with an increase in book bans requests across the country, we must maintain our local, excellent service and **pass Measure 2-141.**

The funding that goes to the Corvallis Parks Department funds programs and operating hours at the Corvallis Community Center, the Majestic Theatre, and Osborn Aquatic Center.

Most of us want to see more funding for our parks, library, and social services. As such, we at the Benton County Democrats urge a "Yes" vote on Measure 2-141. A "No" result would decrease hours at most parks and library facilities, cause staff reductions, and cause significant cuts to events and programming.

Measure 2-141 will **renew the current rate** of \$1.07 per \$1,000 of assessed value

We need to fully fund Corvallis libraries and parks!

MEASURE 2-141 WILL NOT INCREASE OUR TAX RATE

Safeguard our libraries and parks

VOTE YES ON MEASURE 2-141!

(This information furnished by the
 Benton County Democratic Central Committee (291))

City of Corvallis
Measure 2-141
Argument in Favor

VOTE YES FOR MEASURE 2-141 - A YES VOTE FOR
 THE LIBRARY

The Board of Directors of the Friends of the Corvallis-Benton County Public Library urges a 'YES' vote on measure 02-141. Nearly 52% of the revenue will benefit the Corvallis library hours of operation, materials, programs and outreach. This levy will cost Corvallis taxpayers NO NEW taxes.

Services the library system currently provides that will be jeopardized if measure 2-141 is not passed:

- Closure of the Corvallis library Sunday, Monday and some evening hours.
- loss of over 50% of the books and materials budget
- elimination of outreach and support to 509j and local preschools
- programming for all ages would be eliminated and/or scaled back

The library continues to be innovative in serving the public, such as the following activities that would be subject to elimination without the levy: maker activities, Cloud Library and Libby free e-books and audio books, Kanopy movie access, Linked In online courses, and Book Flix, online stories and activities for children.

These drastic losses are inconsistent with our library's history of high standards of service and public demand. Corvallis' book circulation per borrower is almost triple the national average of libraries for similar population size. We believe Corvallis citizens understand the value an adequately funded public library holds for the civic, economic, social, educational, cultural, and safety needs of the community. For many, using the library is part of daily living. Our library is unique among local institutions with its doors open and providing free services each day of the week for everyone equally.

A 'YES' vote for Measure 2-141 is your personal affirmation that the public library and its services are vital to the quality of life in Corvallis.

PLEASE JOIN US!

KEEP OUR COMMUNITIES HEALTHY, STRONG AND LITERATE

VOTE YES FOR MEASURE 2-141

(This information furnished by the
 Friends of the Corvallis-Benton County Public Library)

City of Corvallis Measure 2-141 Argument in Favor

The League of Women Voters of Corvallis supports the passage of Measure 2-141.

The League, a nonpartisan political organization, encourages informed and active participation in government, works to increase understanding of major public policy issues, and influences public policy through education and advocacy.

This measure is a renewal so the property tax rate will be the same as the current levy which expires in 2024.

We base our support on League positions that have been formulated after study and member agreement. These positions support services to those in need, as well as high quality educational and recreational opportunities for all community members.

Our community will lose many services that people rely on and enjoy if the proposed levy is not renewed. The League of Women Voters urges a YES vote for Measure 2-141 because passage will:

- Keep the Library open seven days a week and provide an expansive and diverse collection of library materials in a variety of formats for all ages;
- Keep the Parks and Recreation Department's youth and adult sports, classes, community concerts, and scholarships;
- Keep Osborn Aquatic Center open;
- Keep the Corvallis Community Center open;
- Keep the Majestic Theatre open for performance arts events and artistic/cultural education; and
- Keep providing support to local social service organizations that help our most vulnerable citizens.

Please VOTE YES FOR 2-141

(The information furnished by
League of Women Voters of Corvallis)

City of Corvallis Measure 2-141 Argument in Opposition

Corvallis informs us on their website that if the measure passes, the tax rate will not change and if it fails, the tax rate will be reduced by \$1.07. The tax rate is just part of the tax computation. If the measure passes, I calculate that the property tax change in 2024 for Corvallis property owners will most likely be a 6.09% increase (the 3% annual increases in assessed value in 2023 and 2024) more than they paid in 2022. If the measure fails, I calculate that the property tax change in 2024 for Corvallis property owners will most likely be a 0.35% increase or a 4.66% decrease, depending on the tax code area, (the 3% annual increase in assessed value in 2023 and 2024 and the decrease in tax rate in 2024) compared to what they paid in 2022. And, since property taxes are a cost to a landlord, they will be passed on to their renters.

The voter has a choice to make. Does the voter choose to minimize the cost of housing by reducing, or minimizing the increase in, property taxes? Or, does the voter choose to spend that money on social service agencies, the Corvallis Public Library, and recreation? Which has the higher priority, keeping housing costs down or providing social, library, and recreation services?

In my opinion, keeping people in their homes by keeping the cost of housing down has the higher priority which is why I will be voting against this levy.

For information on the data and methods I used to make my calculations, go to #1 on <http://www.peak.org/~detweij>.

(This information furnished by John H. Detweiler)

Registering to Vote

To vote in Oregon you need to be registered in the county where you reside.

You can register if you can answer yes to these three questions:

- Are you a resident of Oregon?
- Are you a US citizen?
- Are you at least 16 years of age?

If you are 16 or 17 years of age, you will **not** receive a ballot until an election occurs on or after your 18th birthday.

How to register

You can register to vote online at www.oregonvotes.gov or you can get a voter registration form at any of the following places:

- Benton County Elections Office
- any county elections office
- the Secretary of State's Office
- some state agencies such as the Division of Motor Vehicles (DMV)
- a voter registration drive

You can fill the form out in person or send it in by US mail. You can also print out a registration form online at: www.oregonvotes.gov.

What information is required to register?

To complete your registration you will provide you:

- full legal name
- home address
- date of birth
- signature
- valid identification

Updating your voter registration

Once you have registered, you are responsible for keeping your information up to date. You can do this online at www.oregonvotes.gov or by completing and returning a voter registration form with the new information. You should update your registration if you do any of the following:

- change your home address
- change your mailing address
- change your name
- change your signature
- want to change or select a political party

Absentee Voting

In the event you will be out of town during the election and need an absentee ballot, please visit our website at:

www.co.benton.or.us/elections/page/register-update-cancel-and-absentee

Oregon Voter Registration Form



- You may use this form to register to vote or update your information
1. Print with a black or blue pen to complete the form.
 2. Sign the form.
 3. Mail or drop off the form at your County Elections Office.

You may also use online voter resources to register or update your registration status.

oregonvotes.gov

qualifications

Are you a citizen of the United States of America? yes no

Are you at least 16 years of age? yes no

! *If you mark no in response to either of these questions, do not complete this form.*

personal information *required information

last name* first* middle

Oregon residence address, city and zip code (include apt. or space number)*

date of birth (month/day/year)* county of residence

phone email

mailing address, including city, state and zip code (required if different than residence)

Oregon Driver's License/ID number

Provide a valid **Oregon Driver's License, Permit or ID:**

I do not have a valid Oregon Driver's License/Permit/ID. The last 4 digits of my Social Security Number (SSN) are:

x x x - x x -

*I do not have a valid Oregon Driver's License/Permit/ID or a SSN. I have attached a copy of **acceptable identification.***

political party

Not a member of a party

Constitution

Democratic

Independent

Libertarian

Pacific Green

Progressive

Republican

Working Families

Other _____

signature *I swear or affirm that I am qualified to be an elector and I have told the truth on this registration.*

sign here _____ date today _____

! *If you sign this card and know it to be false, you can be fined up to \$125,000 and/or imprisoned for up to 5 years.*

registration updates *Complete this section if you are updating your information.*

previous registration name previous county and state

home address on previous registration date of birth (month/day/year)



Benton County
RECORDS & ELECTIONS DEPARTMENT

Elections & Passports Division

Office: (541) 766-6756
Fax: (541) 766-6757

4500 SW Research Way, 2nd Floor
PO Box 888
Corvallis, OR 97339

co.benton.or.us/elections
elections@bentoncountyor.gov

ABSENTEE APPLICATION

This is not a voter registration form. You must be a registered voter to request an absentee ballot. If you are unsure of your status, you can contact our office or check online at www.oregonvotes.gov. If you have a Drivers' License or ID with the Oregon Department of Motor Vehicles, you may apply electronically for an absentee ballot, update your voting information or register at www.oregonvotes.gov.

Completed and signed absentee application may be submitted by e-mail, fax, mail or deliver in person.

Please select **only one** category:

- Military Out of Country Permanently Student
- Snowbird Out of Country Temporarily Other: _____

Please select **only one** of the three options below:

<input type="checkbox"/> 1. All future elections until further notice.
<input type="checkbox"/> 2. All future elections until the following day: _____ (mm/dd/yyyy)
<input type="checkbox"/> 3. Every year, I will be away from _____ (month) _____ (day) till _____ (month) _____ (day) This will continue to happen until further notice.

Name (Last, First, Middle)	Date of Birth (mm/dd/yyyy)
----------------------------	----------------------------

Absentee Address Line 1
Absentee Address Line 2 (if applicable)
Absentee Address Line 3 (if applicable)
COUNTRY (For United States address: City, State, Zip Code)

Benton County Residential Address
City, State, Zip Code

E-Mail	Telephone
--------	-----------

Signature	Date
-----------	------

BENTON COUNTY OFFICIAL BALLOT DROP SITES

Benton County Elections & Passports Office

Kalapuya Building

4500 SW Research Way, 2nd Floor, Corvallis OR 97333

541-766-6756

Mon thru Fri 8:00 am to 5:00 pm

Election Day 7:00 am to 8:00 pm

24-HOUR OUTDOOR BALLOT DROP BOXES

Kalapuya Building

Drop box in parking lot

4500 SW Research Way, Corvallis OR 97333

Law Enforcement Building

Near entrance on 5th St

180 NW 5th St, Corvallis OR 97330

OSU Gill Coliseum

Corner of Ralph Miller Ln and 26th St

660 SW 26th St, Corvallis OR 97331

LBCC Benton Center

Drop box near main entrance

757 NW Polk Ave, Corvallis OR 97330

Lincoln Health Center

Drop box at center of parking lot

121 SE Viewmont Ave, Corvallis OR 97333

Corvallis Community Center (C3)

Drop box near main entrance

2601 NW Tyler Ave, Corvallis OR 97330

Corvallis Public Library

Drop box next to bike rack at corner of

6th St and Monroe Ave

645 NW Monroe Ave, Corvallis OR 97330

Wells Fargo Bank

Timberhill Shopping Center

2543 NW Kings Blvd, Corvallis OR 97330

Benton County Courthouse

Courthouse lawn on 4th St

120 NW 4th St, Corvallis OR 97330

Benton County Elections
4500 SW Research Way, 2nd Floor
Corvallis, OR 97333

NONPROFIT
CAR-RT SORT
U.S. Postage
PAID
Portland, OR
Permit No. 692



RESIDENTIAL CUSTOMER

OFFICIAL BENTON COUNTY
VOTERS' PAMPHLET
NOVEMBER 7, 2023 SPECIAL ELECTION

