

BENTON COUNTY VOTERS' PAMPHLET



PRIMARY ELECTION MAY 16, 2006

PUBLISHED BY THE
BENTON COUNTY
BOARD OF COMMISSIONERS

Please RECYCLE this pamphlet with your newspapers

ATTENTION

This is the beginning of your county voters' pamphlet. The county portion of this joint voters' pamphlet is inserted in the center of the state portion. Each page of the county voters' pamphlet is clearly marked with a gray screen bar on the outside edge. All information contained in the county portion of this pamphlet has been assembled and printed by the Benton County Elections Office.



BOARD OF COMMISSIONERS

408 SW Monroe Ave., Suite 111

P.O. Box 3020

Corvallis, OR 97339-3020

(541) 766-6800

FAX (541) 766-6893

Dear Benton County Voter:

May 16 is Primary Election Day in the State of Oregon. As a voter, you will have the opportunity to exercise your right to vote on candidates for Benton County and the State of Oregon. Voters in the Greater Albany Public School District will also vote on a General Obligation Bond measure for that district.


This Benton County Voter's Pamphlet is included in the State Voter's Pamphlet. Its purpose is to provide important information on candidates and measures so that voters can best determine how they wish to vote.

The Benton County Elections Office must receive all ballots no later than 8 PM on May 16, Election Day!

It is recommended you do not mail your ballot any later than May 11. Ballots delivered by the post office after Election Day cannot be counted. Official ballot boxes are located throughout the county. A list of ballot box locations is included on Page 3 of this pamphlet.

We hope that the information provided herein will assist you in making informed choices for our community.

Sincerely,



Jay Dixon Linda Modrell Annabelle Jaramillo
Commissioner Commissioner Commissioner

VOTE

Benton County

TABLE OF CONTENTS

Letter from the Board of Commissioners.....2
 Dropsites3

Measure
 Measure 22-53
 Greater Albany School District4

Candidate
 Commissioner Position #1
 Linda Modrell5

Voting Instructions6
 Absentee Ballot Application.....7

Contact Information8

BENTON COUNTY ELECTIONS OFFICIAL BALLOT DROPSITES

24-HOUR BALLOT DROP BOXES
 Across from Benton County Courthouse,
 180 NW 5th St - Corvallis
Wells Fargo Bank
 Next to Pizza Hut, in the Timberhill Mall
 2543 NW Kings Blvd - Corvallis

City Limits Market
 5800 NW Highway 99W - North Corvallis
 Mon - Fri 6 AM to 10 PM
 Sat 8 AM to 10 PM
 Sun 8 AM to 9 PM

John Boy's Aalsea Mercantile Store
 186 Main Street - Aalsea
 Mon - Sat 6 AM to 9 PM
 Sun 7 AM to 8 PM

Corvallis Public Library
 645 NW Monroe Ave - Corvallis
 Mon - Fri 10 AM to 9 PM
 Sat 10 AM to 6 PM
 Sun 2 PM to 6 PM

O.S.U. Valley Library
 Mon - Thur 7:30 AM to 1:00 AM
 Fri 7:30 AM to 10 PM
 Sat 10 AM to 10 PM
 Sun 10 AM to 1 AM

LBCC – Benton Center
 757 NW Polk Ave - Corvallis
 Mon - Thur 7:30 AM to 9:30 PM
 Fri 8 AM to 4 PM

Senior Citizens Center
 2601 NW Tyler Ave -Corvallis
 Mon - Fri 8 AM to 4 PM*

Monroe City Hall
 664 Commercial St - Monroe
 Mon - Fri 8 AM to 12 NOON; 1 PM to 5 PM*

North Albany Middle School
 1205 NW North Albany Rd - Albany
 Mon - Fri 7 AM to 4 PM*

Philomath Community Library
 1050 Applegate St - Philomath
 Mon, Thur, Fri, Sat. 10 AM to 5 PM
 Tue, Wed 10 AM to 8 PM

Benton County Courthouse
 Front entrance, top of the stairs, inside
 Basement, Elections Office Room 13
 120 NW 4th St - Corvallis
 Mon - Fri 8 AM to 5 PM*

DROPSITES OPEN TILL 8 PM ELECTION DAY

Greater Albany Public School District No. 8J

Measure No. 22-53

BALLOT TITLE

GREATER ALBANY SCHOOL DISTRICT FACILITIES IMPROVEMENT GENERAL OBLIGATION BOND AUTHORIZATION

QUESTION: Shall Greater Albany School District issue general obligation bonds totaling \$55,000,000 to renovate schools and expand and improve its facilities? If the bonds are approved, they will be payable from taxes on property or property ownership that are not subject to the limits of Section 11 and 11b, Article XI of the Oregon Constitution.

SUMMARY: This measure may be passed only at an election with at least a 50% voter turnout. This measure provides funds to update District schools which are on average 50 years old, some nearly 100 years old.

Fiscal Accountability and Independent Audits

An independent fiscal oversight and accountability committee will oversee expenditures to ensure that bond funds are used as authorized by voters. All funds will be used to renovate, build and improve classrooms and buildings – not for administrative overhead.

Bond proceeds will be used to:

1. Update and modernize facilities, classrooms and school buildings;
2. Upgrade electrical equipment and improve access to technology, update science labs and libraries;
3. Upgrade heating systems so all classrooms have working heating and ventilation systems;
4. Replace aging water pipes to improve drinking water quality, and upgrade fire safety equipment;
5. Make schools more accessible for disabled and special needs children;
6. Remove asbestos;
7. Build additional classrooms, acquire land, construct and furnish a new school.

Bonds will mature in not more than 11 years from issuance date.

EXPLANATORY STATEMENT

The Board of Directors of the Greater Albany Public School District wants to provide Albany's kids with safe and healthy classrooms and learning environments that will prepare them for the careers of the 21st century. After nearly two years of planning, community meetings, recommendations from a 30-member citizen committee, numerous School Board work sessions, and professional research your school board voted to place this bond on the ballot. Four goals guided us:

1. Making sure our schools are **safe and healthy**,
2. Making sure our students and teachers have the **tools** they need so our kids can compete for college or for the careers of the 21st century,
3. Providing additional classrooms so that all our students have space in which to learn,
4. And making sure taxpayer dollars will be **spent wisely, on our classrooms and facilities, not on administrative overhead.**

This \$55 million bond will pay for the most critical needs in all of our schools throughout the district.

The bond is estimated to cost \$1.74 per thousand for ten years (an increase from the \$.32 currently being paid by Greater Albany Public School District patrons).

HEALTH AND SAFETY

Most of Albany's schools are more than half a century old. Every school needs equipment fixed, replaced and updated including:

- Replace pipes to improve our kids drinking water
- Fix heating and ventilation systems (some of our boilers are so old you can't get parts anymore!)
- Replace roofs
- Update fire equipment and emergency exits, fix hazardous pavement, replace deteriorating gym floors, and renovate unsafe high school track
- Make schools more accessible for disabled students, parents and staff

TOOLS FOR SUCCESS

Many classrooms were designed and built **before World War II**. No one knew then how technology would affect our lives and the future of our children. Today's students depend on schools as the learning centers for the 21st century.

- That means:
 - Upgrading electrical capacity and wiring to accommodate computers and the other technology our kids need (some classrooms have only two electrical outlets);
 - Upgrading science labs (some don't even have sinks);
 - Modernizing our libraries; and
 - Providing new technology centers at our high schools.

GROWTH – The Board feels Albany's rapidly increasing student population needs more space.

Classroom overcrowding is a fact: This bond will:

- Add classrooms at Takena, Tangent, Oak, North Albany Middle School, South Albany High School and West Albany High School; and
- Build a new school east of I-5.

TAXPAYER SAFEGUARDS

An independent community accountability committee will guarantee Bond funds go directly where they are needed most – to the classrooms, to the school buildings, and to the most critically needed renovation and improvements.

- Money cannot be spent on administrative overhead
- The committee includes community leaders, parents, teachers, builders, accountants – they'll make sure YOUR MONEY IS SPENT WISELY, and only on what you voted for!

We need safe schools for our kids, but we also need **safeguards for the taxpayers.**

(Submitted by Donald Bacher, School Board Chair)

NO ARGUMENTS FOR OR AGAINST THIS MEASURE WERE FILED.

Benton County

Commissioner, Position 1



LINDA
MODRELL

DEMOCRAT

OCCUPATION: Benton County Commissioner.
OCCUPATIONAL BACKGROUND: Policy Developer, Oregon Health Plan; Manager, Business Services & Computer System, OSU Agricultural Sciences & Extension; Oregon Community Partnership Team; small business owner.
EDUCATIONAL BACKGROUND: Oregon State University: MBA, B.S.; Linn-Benton Community College: A.A.
PRIOR GOVERNMENTAL EXPERIENCE: Chair, Benton County Commission; Chair, Area Commission on Transportation; Linn-Benton-Lincoln-Lane Regional Investment Board; Chair, Local Government Advisory Committee, Oregon Department of Human Services; Oregon Waste Policy Leadership Group; Community Services Consortium Board.

Re-Elect Linda MODRELL

In Benton County our opportunities are many. So, too, are our challenges. As we face disturbing changes in a global economy and Medicare, rising rates of uninsured, local school closures, and potential loss of significant forest revenue, we must share responsibility for our community well-being. Let's work together using these tools:

Regional collaboration – **Transportation** joins **water** and the **economy** as essential to the Willamette Valley's future livability. These issues can be successfully addressed only on a regional basis.

Creative solutions – Can we get there from here? We must create new results-oriented strategies.

People and service – Hundreds of volunteers pitch in to help while our dedicated county staff works hard to deliver the services we need.

Linda MODRELL: Makes a Difference

Led a county strategic plan update that includes projects to enhance the livability of Benton County and the efficiency of county government. Several of these projects are well underway:

- ✓Local health clinics to expand healthcare access
- ✓Improvement of budget process
- ✓Program to reduce rural fire risks
- ✓Forest education center
- ✓Corvallis-Albany multi-use path

Supported county efforts to enhance the utility of nature's work:

- Stream culvert replacements for improved water quality
- Federal grant funding for collaborative habitat conservation
- Regional plan for well-water nitrate reduction

Linda MODRELL: Committed to Community

•Kiwaniis •Former Corvallis Arts Center Trustee •NOW •former Treasurer OSU Federal Credit Union •Business Enterprise Centerboard •NAACP •League of Women Voters •ARC Policy Board •Corvallis Sesquicentennial Commemoration Taskforce •LBCC Distinguished Alumna

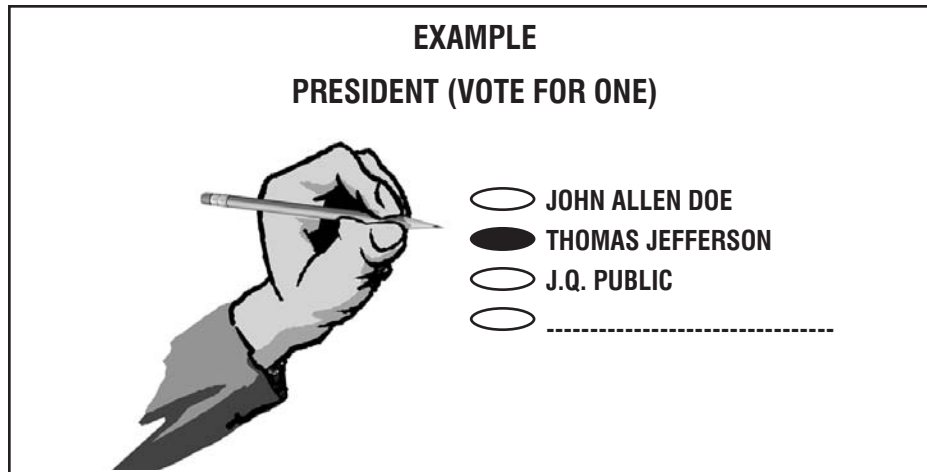
Re-Elect Linda MODRELL

(This information furnished by Linda Modrell)

The above information has not been verified for accuracy by the county. (ORS 251.335 (3b))

VOTING INSTRUCTIONS

1. TO VOTE YOU MUST USE A PENCIL TO BLACKEN THE OVAL (●) TO THE LEFT OF THE CANDIDATE OR RESPONSE OF YOUR CHOICE.
2. TO WRITE-IN A NAME — BLACKEN THE OVAL (●) TO THE LEFT OF THE DOTTED LINE AND WRITE-IN THE NAME ON THE DOTTED LINE.



WHO MAY REGISTER TO VOTE?

Anyone who is:

- ◆ A resident of Oregon;
- ◆ A United States citizen; and
- ◆ 18 years of age or older.

You may register to vote before your 18th birthday or before you are sworn in as a US citizen. In order to register under these conditions, you must turn 18 or be sworn in as a US citizen during the 20-day period immediately before the election. Please call your county elections officer for details if you believe you qualify for this registration process.

DO I HAVE TO REGISTER BY PARTY?

No. If you do not want to be affiliated with a political party, you may check the box that states *Not a member of a party*. You may not designate or change a party affiliation after the 21st day before the primary election.

I WILL BE OUT OF TOWN WHEN BALLOTS ARE MAILED. HOW DO I GET A BALLOT?

Absentee ballots are available 45 days before the election. You may request an early absentee ballot from your county election official either in person, by mail, or by fax. You will need to include your name, signature, residence, address and, if different, your mailing address.

WHAT IF MY BALLOT DOESN'T COME?

If you have not received your ballot within a week after they are mailed, call your county election office. They will check that your voter registration is current. If it is, they will mail you a replacement ballot.

WHAT IF I HAVE MOVED AND HAVE NOT UPDATED MY REGISTRATION?

If you are registered to vote by the 21st day before the election but now have a different address and:

- ◆ You have moved within the same county, contact the county election office. They will instruct you on the process to follow to qualify for a replacement ballot.

OR

- ◆ You have moved to a different county, go to the election office in your new county.

WHAT IS A PRIMARY ELECTION?

- ◆ Major political parties (Democratic & Republican) nominate their candidates at a primary election, which is held on the third Tuesday in May of each even-numbered year. Only a voter who is registered as a member of either political party may vote for that party's candidates at the primary election unless the party opens its primary to voters registered as *Not a member of a party*. If this is the case, voters who are *Not a member of a party* must request major party ballots from their county election office.
- ◆ All nonpartisan offices (i.e. judges and district attorneys) are also on the primary election ballot. Any registered voter may vote for those candidates, regardless of the voter's political party affiliation.

TO REQUEST AN ABSENTEE BALLOT

This is **not** a voter registration form.
 You must be a registered voter to request an absentee ballot.
 If you are unsure of your voting status, contact the Benton County Elections Office.

- Fill out and **SIGN** the form below.
- Mail, fax, e-mail, or deliver **SIGNED** completed form to Benton County Elections Office.
- You may deliver an absentee ballot request for someone else, but he/she must sign it.
- Ballots received after 8:00 PM Election Day cannot be counted.
- If mailing your ballot, be sure to allow enough time for it to arrive by the deadline.



BENTON COUNTY ELECTIONS DIVISION
 120 NW 4TH ST RM 13
 CORVALLIS, OR 97330
 Tel: (541)766-6756 Fax: (541)766-6757
 Website: www.co.benton.or.us/elections E-Mail: bcelections@co.benton.or.us

ABSENTEE APPLICATION

Please select the category that applies to you:

- Military Overseas Snowbird Student Other

I am applying for an absentee ballot for:

- This election only _____ (mth/day/yr)
 All future elections until _____ (mth/day/yr)
 I will be away from _____ (mth/day) till _____ (mth/day) yearly
 I will be in Benton County from _____ (mth/day) till _____ (mth/day) yearly
 This will continue to happen until _____ (mth/day/yr)

Name (Last, First, Middle)	Date of Birth (mth/day/yr)
----------------------------	----------------------------

Absentee Address Line 1

Absentee Address Line 2 (if needed)

City, State, Zip / COUNTRY

Benton County Residential Address

City, State, Zip

E-Mail Address	Telephone
----------------	-----------

Signature:	Date:
------------	-------

Note: Mail, fax, e-mail, or deliver SIGNED completed form
 Mail application to PO Box 888, Corvallis, OR 97339
 Fax application to 541.766.6757
 E-Mail application to bcelections@co.benton.or.us
 Deliver application to Benton County Courthouse, 120 NW 4th St., Room 13, Corvallis, Oregon

Benton County
VOTERS' PAMPHLET
Primary Election
May 16, 2006

Elections Office Open 7:00 A.M. to 8:00 P.M. Election Day

PUBLISHED BY THE
BENTON COUNTY BOARD OF COMMISSIONERS

Election Questions?
Call: 541 766-6756
Fax: 541 766-6757
Email: bcelections@co.benton.or.us
Website: www.co.benton.or.us/elections