

BENTON COUNTY VOTERS' PAMPHLET



**SPECIAL ELECTION
MAY 15, 2007**

PUBLISHED BY THE
BENTON COUNTY
BOARD OF COMMISSIONERS



BOARD OF COMMISSIONERS

408 SW Monroe Ave., Suite 111

PO Box 3020

Corvallis, OR 97339-3020

(541) 766-6800

FAX (541) 766-6893

Dear Fellow Benton County Voter:

On May 15, 2007, a Special District Election will be held in Benton County. As a registered voter, you will have an opportunity to exercise your right to vote on important district board positions and, for voters in the Albany school district, a measure.

The Board of Commissioners directed the County Clerk to publish this **Benton County Voters' Pamphlet** to provide voters with helpful information about their choices concerning these elections. In an effort to bring this information to the voters in the most efficient way, the pamphlet will be available on our website at www.co.benton.or.us/admin/elections, in the elections office, and at local libraries. The pamphlet will NOT be mailed to each household for this election.

Please remember that all ballots, whether mailed or delivered in-person, **must be received at an official ballot drop site in Oregon no later than 8:00 PM on May 15, 2007.** You can drop your ballot at one of the ballot receptacle locations listed on our website and in this pamphlet. The Elections Office is located in the basement of the Benton County Courthouse, 120 NW 4th Street, Corvallis, Oregon.

You will also find information on registering to vote, applying for absentee ballots, marking your ballot, and obtaining a replacement ballot. We hope this information will help you become better informed about the issues in this election as you prepare to make your decisions.

Sincerely,

Annabelle Jaramillo

Commissioner

Linda Modrell

Commissioner

Jay Dixon

Commissioner

TABLE OF CONTENTS AND OFFICIAL BALLOT DROPSITES

TABLE OF CONTENTS

Letter from the Board of Commissioners	2
Table of Contents	3
Official Benton County Ballot Dropsites	3

-----MEASURES-----

Greater Albany Public Schools 8J

Measure 22-71 Request to Change Zones	4
--	---

-----CANDIDATES-----

Corvallis School District 509J

Position 3 . . . Anne Schuster	5
Position 3 . . . Josh Kvidt	5
Position 6 . . . Lisa Corrigan	6
Position 7 . . . Kari Rieck	6

Greater Albany Public School 8J

Zone 1 Frank Bricker	7
------------------------------	---

Philomath School District 17J

Position 5 . . . Joseph Harman	8
--------------------------------	---

General Information

Check Your Ballot & Questions	9
Voter Registration Form	10
Absentee Ballot Application	11
Contact Information	12

BENTON COUNTY ELECTIONS OFFICIAL BALLOT DROPSITES

24-HOUR BALLOT DROP BOXES IN CORVALLIS
 Across from the Courthouse at 180 NW 5th Street, and
 Wells Fargo Bank in Timberhill Shopping Center
 2543 NW Kings Blvd.

CITY LIMITS MARKET

5800 NW Highway 99W - North of Corvallis
 Mon thru Fri 6 AM – 10 PM
 Sat 8 AM – 10 PM, Sun 8 AM – 9 PM

JOHN BOY’S ALSEA MERCANTILE STORE

186 Main St - Alsea
 Mon thru Sat 6 AM - 9 PM, Sun 7 AM – 8 PM

CORVALLIS PUBLIC LIBRARY

645 NW Monroe Ave - Corvallis
 Mon thru Fri 10 AM - 9 PM, Sat 10 AM – 6 PM
 Sun Noon - 6 PM

LBCC – BENTON CENTER

757 NW Polk Ave – Corvallis
 Mon thru Thurs 7:30 AM - 9:30 PM
 Fri 8 AM - 4 PM

MONROE CITY HALL

664 Commercial St - Monroe
 Mon thru Fri 8 AM - 5 PM; Closed Noon - 1 PM*

OSU – VALLEY LIBRARY

OSU Campus
 Mon thru Thurs 7:30 AM – 1 AM
 Fri 7:30 AM - 10 PM
 Sat 10 AM - 10 PM, Sun 10 AM - 1 AM

NORTH ALBANY MIDDLE SCHOOL

1205 NW North Albany Rd - Albany
 Mon thru Fri 7 AM - 4 PM*

PHILOMATH PUBLIC LIBRARY

1050 Applegate St - Philomath
 Mon, Thurs, Fri, & Sat 10 AM - 5 PM
 Tues and Wed 10 AM - 8 PM

SENIOR CITIZENS CENTER OF CORVALLIS

2601 NW Tyler Ave - Corvallis
 Mon thru Fri 8 AM - 4 PM*

BENTON COUNTY COURTHOUSE

Main entrance foyer at top of stairs
 and in the basement next to Room 13
 120 NW 4th St - Corvallis
 Mon thru Fri 8 AM - 5 PM*
 541 766-6756

Directions to dropsites can be found on our website
 at www.co.benton.or.us/admin/elections

*All ballot sites open until 8 PM Election Day

GREATER ALBANY PUBLIC SCHOOL DISTRICT 8J

Measure 22-71

BALLOT TITLE

CAPTION: Changing the zones for Greater Albany Public School District ("GAPS")

QUESTION: Shall GAPS be authorized to change from 5 election zones, to 3 election zones and two At-Large positions?

SUMMARY: Currently, each member of the Board of Directors of the Greater Albany Public School District is elected from one of 5 zones. There has been difficulty finding qualified persons to run for election in each zone. To resolve that problem, and to provide greater opportunity for those persons who wish to serve, the Board seeks authorization to fill its 5 Board positions, 1 from each of three zones, and 2 At-Large positions. The current 5 zones would be re-divided into 3 zones. These three zones would represent approximately equal proportions of the citizens of the community and student population. A map showing the zones is available for inspection at the office of Greater Albany Public School District, 718 Seventh Avenue SW, Albany, Oregon 97321.

If this measure is approved by the voters, then following the May 2007 election, Board Members' positions and the respective successors to office will be designated as a member of Zone 1, Zone 2, Zone 3 and At-Large No. 1 and At-Large No. 2.

EXPLANATORY STATEMENT

The Board of Directors of Greater Albany Public School District wants to provide citizens within the district the opportunity to nominate directors in Zones and provide additional flexibility. Currently, each member of the Board of Directors of the Greater Albany Public School District is nominated from 1 of 5 Zones. There has been difficulty finding qualified persons to run for election in each Zone. To resolve that problem, and to provide greater opportunity for those persons who wish to serve, the Board seeks authorization to fill its 5 Board positions, 1 from each of 3 Zones and 2 At-Large positions. The current 5 Zones would be re-divided into 3 Zones. These 3 Zones would represent approximately equal proportions of the citizens of the community and student population. All director positions would be elected district wide. A map showing the Zones is available for inspection at the office of the Greater Albany Public School District, 718 7th Avenue SW, Albany, Oregon 97321.

If the voters approve, re-election for Board positions would occur as follows:

- Zone 1: Spring 2009, and every 4 years thereafter;
- Zone 2: Spring 2009, and every 4 years thereafter;
- Zone 3: Spring 2011, and every 4 years thereafter;
- At-Large No. 1: Spring 2011, and every 4 years thereafter;
- At-Large No. 2: Spring 2009, and every 4 years thereafter.

The 3 new Zones would be defined as follows:

Zone 1: Zone 1 is defined to include the area north and east of the Willamette River and the area that is north and east of a line beginning at the intersection of the Willamette River and the Albany/Millersburg City Limits and proceeding southeasterly to Old Salem Avenue thence along the centerline of Old Salem Avenue northerly to the intersection with Albany Avenue, thence southeasterly along the centerline of Albany Avenue to the intersection of the Pacific Highway (Hwy. 99) thence northeasterly along the centerline of Pacific Highway (Hwy. 99) to Knox Butte Road; thence easterly along the centerline of Knox Butte Road to the intersection of Highway 20; thence generally easterly along the centerline of Highway 20 to the eastern district boundary.

Zone 2: Zone 2 is defined as the area south of Zone 1, which is east of the centerline of Hill Street and north of Santiam Canal and extending easterly to the eastern district boundary.

Zone 3: Zone 3 is defined as the area south of the Willamette River and west of the centerline of Hill Street and south of the Santiam Canal and east of Hill Street and extending to the southern and western district boundaries.

CORVALLIS SCHOOL DISTRICT 509J

POSITION 3



**ANNE
SCHUSTER**

OCCUPATION: Community Volunteer

OCCUPATIONAL BACKGROUND: Postdoctoral, Department of Genetics, North Carolina State University, 1982-4; Department of Plant Pathology, University of Nebraska, 1984-8; Research Associate, Oregon State University, Department of Botany and Plant Pathology, 1988-9

EDUCATIONAL BACKGROUND: Ph.D. in Plant Science, University of Nebraska, 1982

PRIOR GOVERNMENTAL EXPERIENCE: Appointee to the Corvallis School Board, August 2006

OPTIONAL INFORMATION: In 1989, I put my science career on hold to raise my two daughters-Brigid and Claire. I became an active volunteer in the Corvallis Public Schools when Brigid entered kindergarten in 1994. Since then, I have been involved in every aspect of public education-from assisting kindergarteners to serving as a school board member. I wanted to implement collaborative programs and was encouraged to take leadership roles – as PTO president and/or Site Council representative at K-5, K-8 and High School. Oregon suffers from budgetary woes so I became involved in political efforts to help schools. I worked to help pass a levy this last fall to reduce class size and restore some music and PE to elementary grades. Ten years ago, I organized a Parent Leadership Group of all the PTO presidents in our city to help bond the schools together. This group still meets. I've served on district committees and interview teams. I like to bring people and ideas together.

Awards & Related Memberships: Community Volunteer Award from Benton County Commission on Children and Families, 2006; Stellar Service Award ("Golden Apple") from Corvallis School District, 2006; One of 100 National District Leaders for Citizenship and Service Learning, 2006-ongoing; Corvallis High Site Council, 2003-5; Corvallis High School Parent of the Year Award, 2005; District Equity Committee, 2004; PTO President/Vice President: Adams, Inavale, CHS, 1996-2006.

(This information is furnished by Anne Schuster)

The above information has not been verified for accuracy by Benton County.

POSITION 3



**JOSH
KVIDT**

OCCUPATION: Commercial Loan Officer at Citizens Bank in downtown Corvallis; Employed at Citizens Bank since 2004

OCCUPATIONAL BACKGROUND: While attending OSU I was the office manager for KidSpirit-a youth program on campus. (2002-2004)

EDUCATIONAL BACKGROUND: Graduate from Oregon State University with a Bachelor of Science in Business Administration.

PRIOR GOVERNMENTAL EXPERIENCE: Appointed to Downtown Parking Commission (2005-Present)

OPTIONAL INFORMATION: Other organization involvements: Finance Manager-Special Olympics of Oregon-Benton County; Treasurer-Business Connections of Linn-Benton; State Treasurer-Oregon Jaycees; Vice President-Corvallis Jaycees; Leadership Corvallis-Class of 2007.

(This information is furnished by Josh Kvidt)

The above information has not been verified for accuracy by Benton County.

CORVALLIS SCHOOL DISTRICT 509J

POSITION 6



**LISA
CORRIGAN**

OCCUPATION: Business and Marketing Consultant

OCCUPATIONAL BACKGROUND: Hewlett-Packard Corporation, Finance and Marketing; Embassy Suites Hotels, Sales and Marketing

EDUCATIONAL BACKGROUND: University of Colorado, MBA; Trinity University, Bachelor of Science

PRIOR GOVERNMENTAL EXPERIENCE: PTO President, PTA Vice-President for Fund-raising; PTO Treasurer, and event leadership at elementary and middle schools. Community volunteer and public school classroom, library, and district committee volunteer.

OPTIONAL INFORMATION: I would like to serve on the Corvallis School Board to help set and implement the short and long term goals for our district. My goal is an excellent education for all kids in our community. I believe the greatest strengths in this district are our dedicated, talented teachers and staff and our strong network of community support and volunteers.

During my career at HP, I worked in finance, marketing and business planning, working with diverse teams to create and implement strategic plans. When my oldest child entered Kindergarten, I resigned from HP to shift my investment to children, public education, and the community. Since 1999, volunteering for public schools and PTAs has been my primary focus.

Over the past few years, I sought to inform myself on issues facing our schools by attending many School Board and District Committee meetings. I believe in fiscal responsibility and have experience with budgets and financial reports. I supported school bond and levy campaigns, and have worked on identifying potential grant-funding sources for the district. I have also advocated for K-5 curriculum alignment and safe bicycling and walking routes to school. I have enjoyed volunteering for school PTAs, and in classrooms working primarily with reading and math groups.

I believe School Board members should represent students, their parents, and the community and act as a liaison between these groups and the superintendent, the school district, and school staff. Engaging the entire community and truly listening to their input is an important responsibility. Clear and compelling communication of issues and decisions is very important for school district effectiveness and a healthy relationship with the community.

(This information is furnished by Lisa Corrigan)

The above information has not been verified for accuracy by Benton County.

POSITION 7

No
Photograph
Provided

**KARI
RIECK**

OCCUPATION: Community Volunteer

OCCUPATIONAL BACKGROUND: Hewlett-Packard, World-Wide Integrated Circuits Planner; Intellex, Sales and Marketing

EDUCATIONAL BACKGROUND:

Oregon State University, Business Education/Psychology

PRIOR GOVERNMENTAL EXPERIENCE: Corvallis School Board Chair; Court Appointed Special Advocate (CASA); Oregon State University Institute Review Board (IRB), Vice-Chair; Corvallis School Board Member and Vice-Chair; City of Corvallis/Corvallis School District Joint Sub-committee; Corvallis School District Committees; Visioning, Policy, District Improvement Plan, Facilities Advisory, Program Resources & Review, Budget and Budget Communications; Corvallis Schools Foundation Board; United Way/City of Corvallis Grant Committee; Corvallis School District Site Council and Parent Volunteer/Officer (all levels)

OPTIONAL INFORMATION:

Dear Voters:

It has been my pleasure to serve the community as a member of the Corvallis School Board. I have enjoyed the opportunity to work collaboratively with students, community members, district staff and board members. As a parent of 5 children and a community member for over 30 years, I am deeply committed to the education of EACH child who enters the doors of our schools. I value the time I spend becoming better informed about educational issues, visiting schools, participating on committees and interacting with community members. I'm pleased that through leadership and collaboration the school district has improved transparency of processes, community involvement and continues work to increase communication, while maintaining focus on student learning. This year I participated as one of 25 board members state-wide in Oregon School Board Association's advance leadership training. This training provided me with knowledge and skills to provide strong leadership and advocacy for our children and their education at the local and state level. I would appreciate the opportunity to put the knowledge and skills I've gained to use by serving another term as your representative to the Corvallis Schools. If re-elected I will continue to focus on a quality education for all students in a safe and nurturing environment. I am committed to working with district staff, our community and other governmental agencies to increase learning opportunities and improve transparency. I welcome your input regarding the success of our students. Thank you!

(This information is furnished by Kari Rieck)

The above information has not been verified for accuracy by Benton County.

GREATER ALBANY PUBLIC SCHOOL DISTRICT 8J

ZONE 1



**FRANK
BRICKER**

OCCUPATION: Farmer, 1980-present

OCCUPATIONAL BACKGROUND: Farm Worker, 1972–1980

EDUCATIONAL BACKGROUND: B.S. Anthropology/Sociology, Eastern Oregon College (now Eastern Oregon University), 1972

PRIOR GOVERNMENTAL EXPERIENCE: GAPS School Board; GAPS Budget Committee; GAPS School Board Advisory Committee, Zone 1 Representative

OPTIONAL INFORMATION: With three children in the Greater Albany Public Schools (GAPS), I became interested in the school board while opposing the district's proposed closure of Fir Grove School in 1989. I attended school board and budget committee meetings regularly and was appointed to the budget committee in 1991. I served on the budget committee until I was elected to the school board in 1994, and chaired the budget committee for two years.

In the 13 years I have been on the school board, I have come to realize that there are four primary functions for a school board member:

- Creating and overseeing the administrative, financial and educational policies of the school district.
- Listening to and representing students, parents, and members of the community; helping them to work within the system, and to make changes if changes are needed.
- Helping develop and maintain a school system that is responsive to the needs of students and their parents.
- Maintaining and enhancing the collaborative relationship the district has with both the teachers and the other district employees.

Over the 18 years that I have been involved with the Albany schools, both as a parent of three students and a school board member, I have developed both the knowledge and experience to perform these functions. I am prepared to continue to serve the community as a school board director for the next four years.

(This information is furnished by Frank Bricker)

The above information has not been verified for accuracy by Benton County.

PHILOMATH SCHOOL DISTRICT 17J

POSITION 5



**JOSEPH
HARMAN**

OCCUPATION: Certified Public Accountant and owner of a public accounting practice.

OCCUPATIONAL BACKGROUND: Owner of a public accounting practice, 2000 to present. Senior Audit Manager, Tax Manager and Audit Supervisor for a regional public accounting firm, 1995 to 2000. Audit Supervisor and Staff Accountant for a local firm, 1992 to 1995. Army National Guard Officer, 1990 to 1999. United States Army Officer, 1986 to 1990. Group Counselor, 1984 to 1986.

EDUCATIONAL BACKGROUND: Post-Baccalaureate Certificate in Accounting, Oregon State University, 1992; Bachelor's Degree in Psychology, Western Oregon State College, 1985; Graduate, Crescent Valley High School, 1981.

PRIOR GOVERNMENTAL EXPERIENCE: Auditor for various municipalities to include school districts, cities, counties, and hospitals. Conducted audits in accordance with government standards and local budget law. Firm-wide quality control manager for all government and not-for-profit audits for a top 100 nationally ranked public accounting firm. Consultant for government and not-for-profit organizations providing consultation in many areas to include financial accounting, operating and capital budgeting, financial and internal controls, board controls and oversight, financial policy development and implementation, operational issues and tax compliance.

Combat Arms Officer in the United States Army and National Guard for over twelve years. Positions included: Platoon Leader, Company Executive Officer, Company Commander, Brigade Planner and Tactical Operations Center Officer.

OPTIONAL INFORMATION: If elected, I will focus my efforts on policy development and implementation; administration support and oversight; educator support; and facilities improvement. I believe board members lead through the effective development and implementation of policy while ensuring that administrators and educators follow the policies that are in place. Policies are only as good as the administration's ability to implement them. Educators perform well when adequately supported. This includes providing resources, decreasing class size, and enforcing discipline policies. Finally, the District's facilities need to be upgraded. We need to re-look at our current funding priorities, explore private and other funding sources and implement a long range facilities improvement plan.

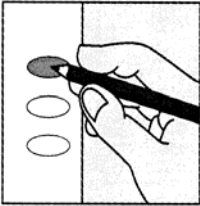
(This information is furnished by Joseph Harman)

The above information has not been verified for accuracy by Benton County.

CHECK YOUR BALLOT AND FREQUENTLY ASKED QUESTIONS

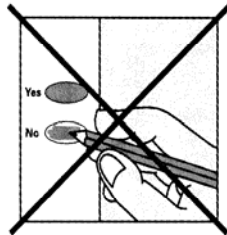
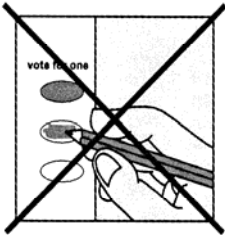
check your ballot!

Make sure you **use a pencil** to fill in the ovals next to your choices.



If you vote for more candidates than allowed, or if you vote **both Yes and No** on a measure, it is called an overvote.

Your vote **will not count** for that candidate or measure.



You do not have to vote on all contests. Those you do vote on will still count.

Contact Benton County Elections to request a replacement ballot if:

- you make a mistake
- your ballot is damaged or spoiled
- you lose your ballot
- for any other reason

Benton County Elections

phone: 541 766 6756
fax: 541 766 6757
tty/ttd: 541 766 6080
email: bcelections@co.benton.or.us

1 866 ORE VOTES/673 8683

se habla espanol

www.oregonvotes.org

rev 9/04

FREQUENTLY ASKED QUESTIONS

Q. What do I do when a ballot for someone else is delivered to my home?

A. It is important that you **DO NOT THROW THE BALLOT AWAY**. Write on the envelope that the person is no longer at that address and **PUT IT BACK INTO THE MAIL**. Postage is not needed. Once our office has received the undeliverable ballot you will stop receiving them.

Q. If I mark my ballot in pen will it still be counted?

A. Yes. We recommend that you mark over the pen marks with a pencil to ensure that the vote tally machine reads your response. If that is not done our processing tables will catch it and over mark with a pencil for you.

Q. I forgot to put my ballot in the secrecy envelope. Will you count my ballot?

A. Yes. We recommend that voters use the secrecy envelope. You can open the ballot return envelope, place your ballot in the secrecy envelope and reseal it. Write "Opened By Voter" along the portion that you opened and sign your full name there as well. That way we will know that the voter was the one who opened the ballot and can count it. However, if your ballot comes back without a secrecy envelope, it will still be counted.

Q. How do you know I am the one who voted my ballot?

A. The signature on EACH ballot return envelope is checked. Elections staff compares the signature on your ballot return envelope with the signature on your Voter Registration Card. If the signatures do not match we will contact you to help us resolve the issue. **Remember:** Even a person with a Power of Attorney cannot sign your ballot. Only you can.

Q. When do election results become available and how can I find out what they are?

A. Election results are available on the Benton County Elections website at: www.co.benton.or.us/admin/elections. First results become available between 8:20 and 9:00 PM on Election Night. Further results will be added as ballots are received and tallied. All ballots cast within Benton County will be counted and the results posted before the election staff leaves Election Night. However, ballots returned in other counties must be sent to Benton County for later tally and the election cannot be certified until all voters whose ballots were challenged have had an opportunity to respond to those challenges.

TO REQUEST AN ABSENTEE BALLOT

This is **not** a voter registration form.
 You must be a registered voter to request an absentee ballot.
 If you are unsure of your voting status, contact the Benton County Elections Office.

- Fill out and **SIGN** the form below.
- Mail, fax, e-mail, or deliver **SIGNED** completed form to Benton County Elections Office.
- You may deliver an absentee ballot request for someone else, but he/she must sign it.
- Ballots received after 8:00 PM Election Day cannot be counted.
- If mailing your ballot, be sure to allow enough time for it to arrive by the deadline.



BENTON COUNTY ELECTIONS DIVISION
 120 NW 4TH ST RM 13
 CORVALLIS, OR 97330
 Tel: (541)766-6756 Fax: (541)766-6757
 Website: www.co.benton.or.us/admin/elections

ABSENTEE APPLICATION

Please select the category that applies to you:

- Military Overseas Snowbird Student Other

I am applying for an absentee ballot for:

- This election only _____ (mth/day/yr)
 All future elections until _____ (mth/day/yr)
 I will be away from _____ (mth/day) till _____ (mth/day) yearly
 I will be in Benton County from _____ (mth/day) till _____ (mth/day) yearly
 This will continue to happen until _____ (mth/day/yr)

Name (Last, First, Middle)	Date of Birth (mth/day/yr)
-----------------------------------	-----------------------------------

Absentee Address Line 1
Absentee Address Line 2 (if needed)
City, State, Zip / COUNTRY

Benton County Residential Address
City, State, Zip

E-Mail Address	Telephone
-----------------------	------------------

Signature:	Date:
-------------------	--------------

Note: Mail, fax, e-mail, or deliver SIGNED completed form
 Mail application to PO Box 888, Corvallis, OR 97339
 Fax application to 541.766.6757
 E-Mail application to bcelections@co.benton.or.us
 Deliver application to Benton County Courthouse, 120 NW 4th St., Room 13, Corvallis, Oregon

Oregon Voter Registration Card



SEL 500web rev 3/07

you may use this card to:

- register to vote in Oregon
The deadline to register to vote is the 21st day before an election.
- change your name, mailing address, residence address or political party affiliation on your voter registration
- become eligible to sign petitions, including initiative, referendum and recall petitions

how to register to vote

- Fill out the form using black pen and print clearly.
If the form is incomplete, it may be rejected.
- Sign the form.
- Mail or drop off the completed form at your County Elections Office.
Do not fax! If you fax this form it will be rejected. Addresses are online at <http://www.sos.state.or.us/elections/other.info/clerk.htm>

Your County Elections Office will mail you a Voter Notification Card to confirm your registration.

selecting a political party

Some political parties require you to be registered in their party to vote for their candidates at a Primary Election.

identification

New laws require that people must provide identifying information to register to vote. If you have a current, valid Oregon DMV Driver's License/ID, you must provide that number in section 4. If you do not have a current, valid Oregon DMV Driver's License/ID, you must provide the last four digits of your Social Security number in section 4a.

If you do not have a current, valid Oregon DMV Driver's License/ID **or** a Social Security number, you must affirm this by marking the boxes in sections 4 and 4a, and if you are registering by mail, you must provide a **copy** of one of the following:

- valid photo identification
- a paycheck stub
- a utility bill
- a bank statement
- a government document
- proof of eligibility under the Uniformed and Overseas Citizens Absentee Voting Act (UOCAVA) or the Voting Accessibility for the Elderly and Handicapped Act (VAEH)

assistance

If, because of a disability, you need assistance registering to vote or voting please contact your County Elections Official.

for more information:

call 1 866 ORE VOTES/673 8683 **visit** www.oregonvotes.org **tty** 1 866 350 0596
se habla español **for the hearing impaired**

1 qualifications *If you mark no in response to either of these questions, do not complete this form.*

- Are you a citizen of the United States of America? yes no
Will you be 18 years of age on or before election day? yes no

2 personal information **denotes optional information*

name last _____ first _____ middle _____
Oregon residence address (include apt. or space number) _____ city _____ zip code _____
date of birth (month/day/year) _____ county of residence* _____
phone number* _____ email address* _____
mailing address (required if different than residence address) _____ city _____ zip code _____

3 political party *choose one of the following:*

- Constitution Party Democratic Party Independent Party
 Libertarian Party Pacific Green Party Republican Party
 Working Families Party Not a member of a party Other _____

4 Oregon DMV Driver's License/ID number *If you fill in this section, do not send a copy of ID.*

valid Oregon DMV Driver's License/ID number

- Mark here only if you **do not have** a valid Oregon DMV Driver's License/ID and go to step 4a.

4a last four digits of Social Security number *If you fill in this section, do not send a copy of ID.*

x x x - x x -
last four digits of Social Security number

- Mark here only if you **do not have** a valid Oregon DMV Driver's License/ID or a Social Security number. If you are registering by mail, please include a copy of acceptable identification, listed to the left.

5 signature *I swear or affirm that I am qualified to be an elector and I have told the truth on this registration.*

sign here _____ date today _____

- !** If you sign this card and know it to be false, you can be fined up to \$125,000 and/or jailed for up to 5 years.

6 registration updates *If you are previously registered and updating your information, fill out this section.*

previous registration name _____ previous county and state _____
home address on previous registration _____ date of birth (month/day/year) _____

VOTER REGISTRATION, BALLOT INFORMATION AND CONTACTS

VOTER REGISTRATION AND BALLOT INFORMATION

In order to receive a ballot, voters must be registered to vote in their county of residence no later than 21 days prior to the election. If a registered voter moves within the State of Oregon, prior to voting, the voter can update his/her registration and receive a ballot for the current election up until **8:00 PM on Election Day, May 15, 2007**.

If your ballot is lost, destroyed, damaged, or you made a mistake in marking your ballot, you may contact the Benton County Elections Office to request a replacement ballot. The replacement ballot will be mailed to you, as long as your request is received no later than the 5th day before Election Day. After the 5th day before the election, you may pick up a ballot by coming to the Benton County Elections Office.

If you have already mailed your original ballot before you realize you made a mistake, your ballot has been cast, and you are not eligible for a replacement ballot.

In order for your ballot to be counted it must be returned to any elections office or official ballot drop site in the State of Oregon, **no later than 8:00 PM Election Day, May 15, 2007**.

Postmarks DO NOT count!

Ballots must be returned in the official ballot return envelope and **signed by the voter** in order to be counted.

Use a **PENCIL** to vote your ballot.

If you have any questions about voter registration, your ballot, and/or voting in Benton County you are encouraged to call 541 766-6756.

CONTACT INFORMATION

Benton County Elections Website

The website is an excellent source of information concerning voter registration, absentee voting, frequently asked questions, and links to other local, state, and federal election officials. You will also find election specific information such as election filings, results, voter turnout and this voters' pamphlet on our website www.co.benton.or.us/admin/elections.

Voters with Disabilities

If you need help voting because of a disability, contact the Benton County Elections Office. Deputized elections staff is available to assist you in casting a ballot; or ask about alternate voting formats.

Benton County Elections Office

Phone: 541 766-6756
TTY: 541 766-6080
Fax: 541 766-6757
Website: www.co.benton.or.us/admin/elections
E mail: bcelections@co.benton.or.us

State of Oregon

Phone: 1 866 673-8683
Website: www.oregonvotes.org
Se Habla Español

Información en Español

Para mas información sobre las elecciones en el condado de Benton

llame al: 541 766-6756
TTY: 541 766-6080
limitaciones auditivas
o al numero gratis: 1 866 673-8683

Condado: www.co.benton.or.us/admin/elections
Estado: www.oregonvotes.org

Se Habla Español

WHERE TO FIND MORE INFORMATION

BENTON COUNTY WEBSITE

The Benton County Elections Office has an extensive website where you can find a great deal of information. Here are some of the types of information available there:

Election Information; information including candidate and measure filings, and other election dates and deadlines.

Current Voters' Pamphlet; as well as historic Voters' Pamphlets for both the County and State going back to 1997.

Official Dropsite Locations; and maps showing where they are located and how to get to them.

Historic Election Information; candidates, measures, and results going back to 1996.

Voter Registration form; and information on qualifications for becoming a voter, as well as when voters need to update their registration information.

Absentee Voter Application; for anyone who will be gone during an upcoming election. Remember, ballots cannot be forwarded. Only the voter can request a ballot be sent to an address other than where he/she is registered to vote.

Elected Officials; list of local, state, and federal elected officials and how to reach them.

Political Parties; list of major and minor parties and how to reach them.

Filing Forms; for candidates, measures, political action committees, voters' pamphlets, and campaign finances.

Political Maps; showing precinct, city, congressional, senate, and representative boundaries.

Links; to the Benton County Records Office, Secretary of State Elections Office, Oregon Revised Statutes, and Oregon Votes

The Benton County Elections website **continues to be updated** and expanded daily, so please visit it often.

www.co.benton.or.us/admin/elections/

OTHER PLACES TO CHECK

If you would like to read the latest information concerning the election, you can check one of these local newspapers;

Corvallis Gazette Times:

<http://www.gazettetimes.com>

Albany Democrat Herald:

<http://democratherald.com>

Tri-County News:

tceditor@trivestnews.com

**Benton County
VOTERS' PAMPHLET
Special Election
May 15, 2007**

Elections Office Open 7:00 AM to 8:00 PM Election Day

PUBLISHED BY THE
BENTON COUNTY BOARD OF COMMISSIONERS



Election Questions?
Benton County Elections Office
Phone: (541) 766-6756
TTY: (541) 766-6080
Fax: (541) 766-6757
Website: www.co.benton.or.us/admin/elections
Email: bcelections@co.benton.or.us