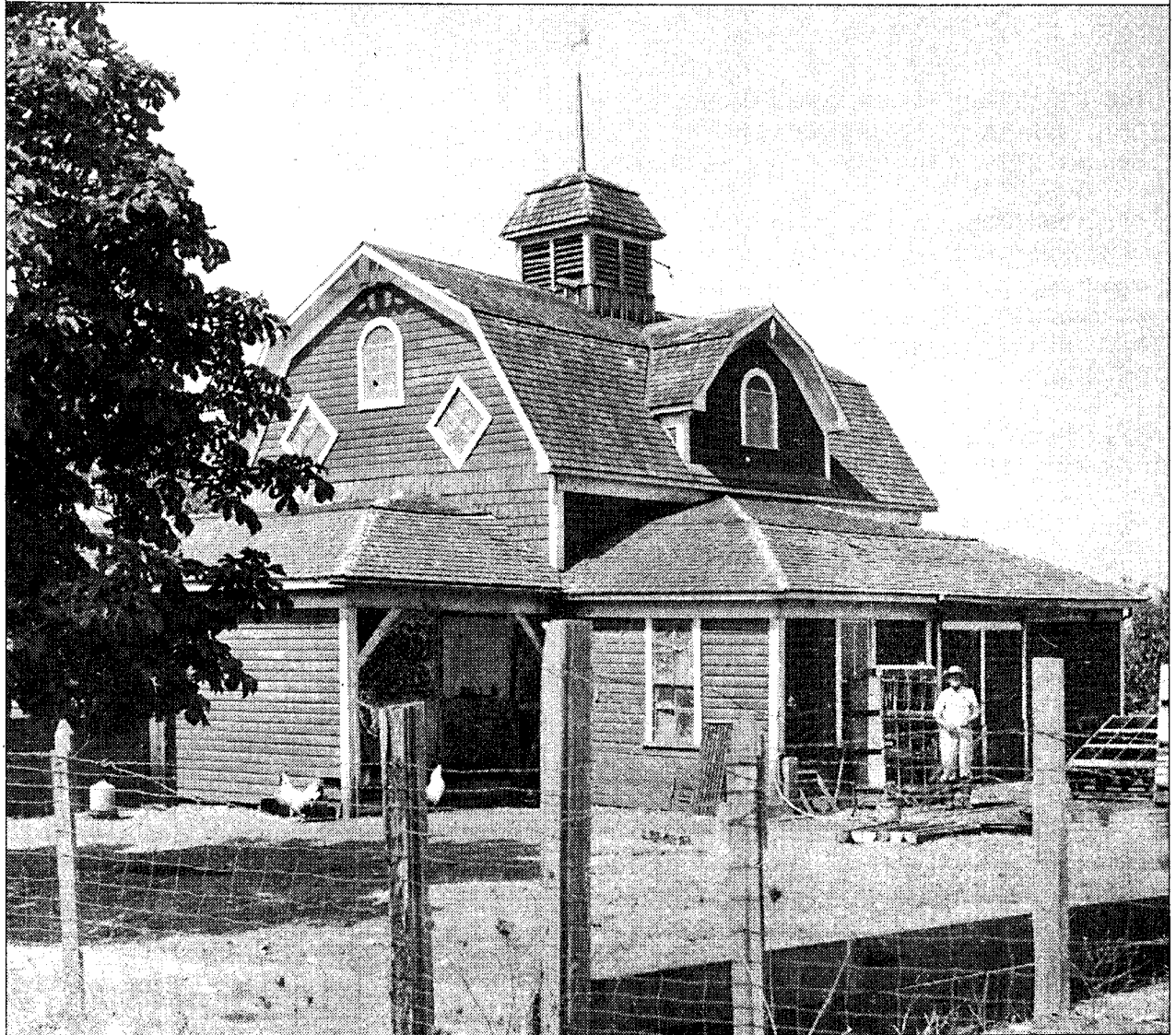
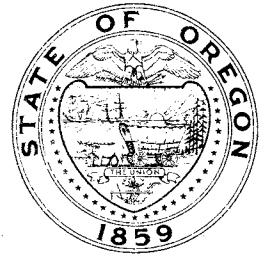


voters' pamphlet



STATE OF OREGON BIENNIAL PRIMARY ELECTION MAY 19, 1998

Compiled and Distributed by

Phil Keeling
Secretary of State

This Voters' Pamphlet is the personal property of the recipient elector for assistance at the polls.

PHIL KEISLING
SECRETARY OF STATE
MICHAEL GREENFIELD
DEPUTY SECRETARY OF STATE



STATE OF OREGON
SECRETARY OF STATE
136 STATE CAPITOL
SALEM, OREGON 97310-0722
(503) 986-1500

Dear Voter:

This 1998 Primary Election Voters' Pamphlet contains information about voting in the May 19, 1998, polling place election. It includes statements from candidates running for state office and the text, ballot title and arguments for the one ballot measure referred by the 1997 Legislature.

For the first time since 1992, your edition of this Pamphlet may also include ballot measures, measure arguments and candidate statements for counties and the Metropolitan Service District (Metro), and candidate statements for cities with a population greater than 50,000. Local candidates and measures may also appear in optional local voters' pamphlets, which might be bound in this State Voters' Pamphlet or mailed separately. These changes are the result of action by the 1997 legislature.

Please remember, we do not verify the accuracy or truthfulness of the statements made by candidates or measure proponents or opponents prior to publishing them in the Pamphlet.

The candidates for partisan political office who appear in this Pamphlet are vying for the nomination of either the Republican or Democratic parties, Oregon's two major political parties. As provided in Oregon law, minor political parties and assemblies of electors can nominate candidates at conventions held between May 19 and August 25. Other nonaffiliated candidates may be nominated by petition prior to August 25. Those candidates will appear on the November General Election ballot with the candidates nominated at this Primary Election.

The Democratic Party of Oregon has opened its Primary Election nominating process to all voters not affiliated with any other political party. **Nonaffiliated voters may vote their usual ballot – all measures and those offices elected on a nonpartisan basis – or may choose to vote a Democratic ballot that also includes that party's nominees for partisan offices.** If you wish to vote a Democratic ballot you must request one at the polling place before you sign the poll book. Absentee voters may request that they be mailed a Democratic ballot. If you do not request a Democratic ballot you will be issued a nonpartisan ballot.

I encourage you to vote on May 19 – your fellow Oregonians are counting on you.

Best,



Phil Keisling
Secretary of State

On the Cover: Historic and unusual barns once adorned every corner of Oregon. Glen Eastman's dutch colonial-style barn was built in 1913 and was located south of Scio in Linn County. 1958 photo taken by Ben Maxwell courtesy of the Ben Maxwell Photography Collection, Salem Public Library.

Measure No. 02-53

A referral submitted to the electorate of Benton County by the Board of County Commissioners to be voted on at the Biennial Primary Election, May 19, 1998.

BALLOT TITLE

02-53 PUBLIC SAFETY, HEALTH, AND SERVICE MAINTENANCE FIVE-YEAR SERIAL LEVY

QUESTION: To maintain current services, shall Benton County levy 35 cents per \$1,000 assessed valuation, outside permanent rate beginning in 1998-99?

This measure may cause property taxes to increase more than three percent.

The proposed levy will be in effect for five years.

SUMMARY: This measure may be passed only at an election with at least a 50% voter turnout.

Passage of this levy will allow the county to continue to provide critical services.

Due to limitations imposed by statewide Ballot Measures 47 and 50, if this levy fails the county will be required to reduce current services by approximately \$1.0 million.

Two-thirds of the revenue generated from this levy will be used to maintain current services. One-third will be used to create and expand programs that address critical needs identified in recent studies, including:

- A Criminal Offender Control Program to reduce crimes committed by chronic adult and juvenile offenders;
- A team of social service and law enforcement specialists to reduce juvenile delinquency and child abuse;
- Expanded community policing to assist neighborhoods and rural communities in preventing and solving crimes and promoting public safety;
- Expanded alcohol and drug prevention and mental health services.

If the levy is not approved, essential county services will be reduced. Staff reductions will result in fewer services in public safety, public health, land-use planning, parks, and other county departments.

Levy cost estimate is 35 cents per \$1,000 assessed value per year. A home with \$150,000 of assessed value would pay an additional \$4.38 per month or \$53 per year as a result of this levy.

This levy, which maintains essential services and adds critical public health and safety services, is estimated to provide \$1.50 million in 1998-1999, \$1.57 million in 1999-2000, \$1.65 million in 2000-2001, \$1.73 million in 2001-2002, and \$1.82 million in 2002-2003.

EXPLANATORY STATEMENT

Measure 02-53 will allow the continuation of county services that will otherwise be discontinued due to limitations imposed by Statewide Ballot Measures 47 and 50. It will also provide additional resources to improve public safety, reduce juvenile crime, and expand certain public health programs. Approximately two-thirds of the revenue generated from this measure will be used to maintain current services. One-third will be used to create and expand programs that address critical needs in public safety and public health that were identified in recent community studies.

Local Impacts of Statewide Ballot Measures 47 and 50

Sixty-three percent of Benton County voters opposed Ballot Measure 47. The measure narrowly passed statewide and if this local option levy fails, the county will have to make budget reductions of approximately \$1.0 million. Seventy percent of Benton County's General Fund operating budget goes to support personnel. Necessary staff reductions will result in fewer services in public safety, public health, juvenile crime prevention, land-use planning, parks, and other county departments.

Addressing Critical Community Needs

If approved, the levy will address critical needs identified in several recent studies including: the 1996-97 City of Corvallis and Benton County United Way Community Needs Assessment; the Commission on Children and Families Comprehensive Plan, and the Benton County Juvenile Crime Prevention Plan. These studies identify citizen concerns about public safety, juvenile crime, and public health issues. Approval of this levy will:

- Continue county services as provided prior to the passage of Statewide Ballot Measures 47 and 50;
- Create a multi-disciplinary team of social service and law enforcement specialists to collaborate with schools and our communities to reduce juvenile delinquency and child abuse;
- Expand community-based law enforcement to help neighborhoods and rural communities quickly resolve public safety issues;
- Increase the number of adult and juvenile probation officers to reduce and control crime through improved supervision, intervention, treatment, and expanded partnerships within our communities;
- Provide for increased school-based health and drug and alcohol prevention services;
- Provide additional early intervention and prevention services to at-risk children.

Providing for the Continuation of Existing Services

County government's role is to insure that citizens receive core services that promote the best interests and well being of our communities. These essential core services include:

- Monitoring, protecting, and promoting the health and well-being of all Benton County residents in the areas of community health, mental health, and environmental health;
- Law enforcement and corrections services;
- Services for children and families;
- Juvenile crime prevention and supervision of juvenile offenders;
- Management and operation of county roads;
- Management of public records and elections;
- Land use planning, Extension Service, parks, and fairgrounds.

The safety, security and well being of citizens is a fundamental concern of county government and is accomplished through cooperative partnerships with other agencies, organizations, and individual citizens. This measure will allow continuation of current services and improve public safety, reduce juvenile crime, and expand certain public health programs.

(This explanatory statement was prepared by the Benton County Board of County Commissioners.)

Measure No. 02-53

ARGUMENT IN FAVOR

The residents of Benton County have a strong commitment to preserving the quality of life we enjoy. We consistently rank near the best in Oregon in nearly all public health and safety measures because of this commitment.

In the last six years, statewide initiatives have severely limited the ability of local communities to maintain critical services. These measures were soundly defeated in Benton County, but passed statewide.

During this same time, population growth and changes in social conditions have placed more demands on public services and our ranking has declined in 12 of the 14 statewide measures of juvenile and adult crime and public health. While Benton County still ranks highly in nearly all areas, there is cause for concern should these trends continue.

We share the concerns expressed by residents in the "1996-97 Community Needs Assessment" – providing positive activities for youth, reducing juvenile crime, and improving health and safety. We believe it's time to invest in our future.

This winter a panel of community leaders reviewed county services, community needs, and funding alternatives. While they unanimously commended Benton County for increasing efficiency and improving services, they concluded:

"Benton County has used resources responsibly, but is now at the point where additional funds are needed to meet the needs and demands of residents."

After carefully considering recommendations from citizen advisory committees, the community panel, and our staff, we are placing this Measure before the voters. We believe passage of this Measure is necessary to reverse the negative trends, maintain the quality of life we enjoy, and make the improvements necessary to achieve our vision and mission of "Promoting a safe and nurturing environment where families and individuals can thrive and prosper."

We thank all of the community members, county employees, and volunteers who work every day to make this vision a reality.

We urge you to join us in VOTING YES ON MEASURE 02-53 to support our commitment to a safe and healthy community.

<u>Bob Adams</u> Benton County Commissioner	<u>Bob Speaker</u> Benton County Commissioner	<u>Kent Daniels</u> Benton County Commissioner
---	---	--

(This information furnished by Bob Speaker, Bob Adams and Kent Daniels, Benton County Board of Commissioners.)

(This space purchased for \$300 in accordance with ORS 251.285.)

The printing of this argument does not constitute an endorsement by the State of Oregon, nor does the state warrant the accuracy or truth of any statement made in the argument.

ARGUMENT IN FAVOR

The levy is critically important for public safety. It restores two Sheriff's deputies and one deputy district attorney lost to budget cuts in 1997. And it adds four new Juvenile Department probation officers and one more Sheriff's deputy to work in two interagency programs to reduce crime:

1. The **Offender Control Program** targets chronic adult and juvenile offenders who are at increased risk of committing more crime while on probation. The county levy will be blended with state funds to provide tighter supervision and swifter sanctions for probation violators. The levy will provide four new juvenile probation officers and maintain Benton County's access to seven new juvenile detention cells. The State will fund an additional adult probation officer and continue funding for the newly opened Day Reporting Center. The Offender Control probation officers will work in coordination with a school-based interdisciplinary team and with the Neighborhood and Community Response teams.

2. **Neighborhood and Community Response teams** will expand community policing countywide to help neighborhoods and rural communities reduce crime and improve safety. The teams will include deputy sheriffs, police officers, prosecutors, adult and juvenile probation officers and citizens specially trained to build community partnerships and solve problems. The levy will fund 3 deputy sheriffs and one deputy district attorney. The remaining team positions will be assigned from existing resources. The teams will support existing community-policing efforts within the cities and expand community-policing practices into rural Benton County.

We request your support for the levy.

Stan Robson Sheriff	Pete Sandrock District Attorney
------------------------	------------------------------------

(This information furnished by Stan Robson, Benton County Sheriff and Pete Sandrock, Benton County District Attorney.)

(This space purchased for \$300 in accordance with ORS 251.285.)

The printing of this argument does not constitute an endorsement by the State of Oregon, nor does the state warrant the accuracy or truth of any statement made in the argument.

Measure No. 02-53

ARGUMENT IN FAVOR

We believe in Benton County! It's a great place to live. It's our home and it's worth investing in. That's why we're voting YES on Measure 02-53. It's an investment in the health and safety of our community.

Benton County has long been one of the safest places in Oregon. Violent crimes and property crimes are well below state averages. So are child abuse rates and juvenile crime. Our communities have been safe because our citizens have a long history of investing in effective programs to meet our challenges.

Today, some of these trends are moving in the wrong direction. Crime and child abuse rates are rising. If we want to keep our communities safe, we need Measure 02-53. This investment will allow the county to continue providing vital services that are threatened by previous ballot measures and the decline in timber revenues.

In our communities, we expect law enforcement officers to be there when we need them. We expect criminals to face consequences when they're convicted of crimes. We expect roads and parks to be well maintained. If we are to continue this standard of high expectations, then we must make the necessary investment now!

Measure 02-53 will provide more supervision and consequences for juvenile and adult offenders. It will put more deputy sheriffs out on our streets. It will provide support for our schools by creating a team of specialists to help children with substance abuse, depression, hunger, pregnancy, truancy, and behavior problems.

By making these small but critical investments today, we are securing the future health and safety of the citizens and communities of Benton County.

Join us in voting YES on Measure 02-53 to keep Benton County a great place to live.

(This information furnished by Barbara Schatz, Christine Puetz, Beverly J. Larson, Julie J. Manning, Bobbie Webber and Hans Neukomm, Committee for a Safe and Healthy Benton County.)

(This space purchased for \$300 in accordance with ORS 251.285.)

The printing of this argument does not constitute an endorsement by the State of Oregon, nor does the state warrant the accuracy or truth of any statement made in the argument.

ARGUMENT IN FAVOR

The Commission on Children and Families has the mission of advocating for and assisting in providing for the needs of children and families. We have seen Measures 5 and 47 erode the quality of services available for children and families. We have been especially concerned about the incidence of child abuse within our families, substance abuse among youth, and the amount of juvenile crime within the county. We have recognized also the need for increased availability of public health services for families within Benton County.

The Commission on Children and Families therefore supports Measure 02-53 because it will not only restore county services as they were before the passage of Measures 5 and 47, but it will also provide those enhanced services that will benefit the children and youth of this county.

Specifically, it will create a multi-disciplinary team of social service and law enforcement specialists who will collaborate with schools and agencies, both public and private, to reduce juvenile delinquency and child abuse.

In addition it will increase the number of adult and juvenile probation officers who can provide improved supervision, intervention, treatment, and expanded partnerships within the community, thereby helping to reduce and control crime.

It will provide for increased school based health and drug and alcohol prevention services.

Teachers in pre-school settings and in the first four grades of elementary school report a high number of children exhibiting severe behavior problems. Resources to provide adequate intervention services for these children do not currently exist, and unless those services are provided, competent research reports indicate that these children are at high risk for becoming delinquents. This measure will provide additional early intervention and prevention services for these at-risk children.

We urge you to join us in VOTING YES ON MEASURE 02-53 to support our commitment to quality services for families and children.

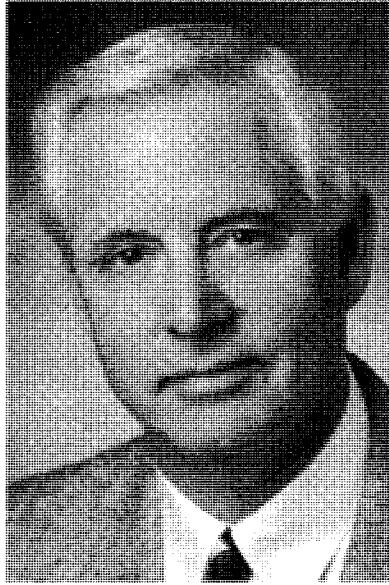
(This information furnished by Bud Fredricks, D. Joan Collison, Lupe Magginnis, John M. Davis, Patricia McRitchie, Ray Shimabuku, Andrew Loika, Sally Haffner, Lois Van Leer, Sheila Shafer, Michael Youstsey and Margaret Puckette, Commission on Children and Families.)

(This space purchased for \$300 in accordance with ORS 251.285.)

The printing of this argument does not constitute an endorsement by the State of Oregon, nor does the state warrant the accuracy or truth of any statement made in the argument.

County Commissioner

BENTON COUNTY
POSITION 1



**DOUGLAS C.
SWEETLAND**

Republican

OCCUPATION:
President, Economic
Development
Partnership

**OCCUPATIONAL
BACKGROUND:**
Small business
owner, 14 years
in the insurance
industry, non-profit
management.

**EDUCATIONAL
BACKGROUND:**
B.S., Political
Science, University of
Oregon, 1968;
Institute for

Organizational Management, 1991

PRIOR GOVERNMENTAL EXPERIENCE: Mayor, Junction City, 1983-84; Junction City Planning Commission, 1975-82; Benton County appointee to Regional Strategies Board.

COMMUNITY INVOLVEMENT:
Linn-Benton Community College Foundation Board, Corvallis Boys and Girls Club Board, Salvation Army, Linn-Benton Business Education Compact, Southern Willamette Research Corridor, Greater Corvallis Rotary Club, AYSO Coach, Pacific Northwest Economic Development Council, Linn-Benton Community College Advisory Boards member.

My priorities as County Commissioner will be:
BUDGET: Implementing efficiency, accountability and innovation in the use of County funds.

INFRASTRUCTURE: Decades of investment have been placed in our infrastructure. Bridges, roads and County facilities must be protected while future needs are anticipated and planned.

LAND USE: There must be a recognition of land owners needs and schedules. The process for designated land uses should employ flexibility while adhering to the regulations we must follow.

ADMINISTRATION: The Commissioners office should be responsive to the needs of the extended community and display an openness of cooperation and cohesiveness.

PUBLIC SAFETY AND HEALTH: As stated in the citizens survey, provide a community that is safe and healthy for all residents, young and old.

SOCIAL/COMMUNITY PROGRAMS: Promote family values and the ways in which these values can be strengthened.

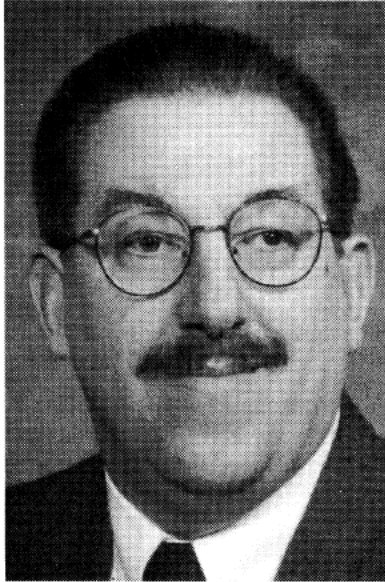
ECONOMIC HEALTH AND STABILITY: Ensure that all residents have an equal opportunity to improve their economic health through the diversification of business and related employment.

Accessibility is an important criteria for a County Commissioner. I firmly believe in being accessible to County residents as well as County staff. My prior public and private experience in dealing with the HARD issues provides me with an understanding of the ways in which government services should be delivered. Livability, environment, quality employment opportunities and a safe community are all factors I support and can enhance as your County Commissioner.

(This information furnished by Committee to Elect Doug Sweetland Benton County Commissioner.)

County Commissioner

BENTON COUNTY POSITION 1



GEORGE C. GROSCH

Democrat

OCCUPATION:
Community Resource Specialist, Human Services

OCCUPATIONAL BACKGROUND:
Center Against Rape & Domestic Violence; Lincoln County School District; District Executive, Boy Scouts of America

EDUCATIONAL BACKGROUND:
Bachelor Professional

Studies, State University, New York.

PRIOR GOVERNMENTAL EXPERIENCE: Corvallis Budget Commission; Chair, Corvallis Housing and Community Development Commission; Benton County Strategic Plan Team; Benton County Goal Evaluation Team; Emergency Shelter Task Force.

GEORGE GROSCH – PROVEN LEADERSHIP

Benton County Council for Social Services, Past President
Plain Talk for Kids, Treasurer
Adams School Site Council
Democratic Central Committee, Vice President
Corvallis Chamber of Commerce Available Housing Task Force
Corvallis Neighborhood Housing Services, Board Member, Past President
Affordable Housing Working Group
Corvallis First Citizen, Nominee

GEORGE GROSCH - TURNING COMMUNITY VISION INTO REALITY

The strength of Benton County resides in our common values and shared vision. Local government is most effective when it works to create communities where individuals and families can grow, work, learn and prosper.

We must address our law enforcement, health and human service needs, and responsible growth in a time of diminishing resources. Measure 50 has limited our ability to support needed services. We must find ways to fund the services our communities demand.

- **PUBLIC SAFETY:** County government must ensure the safety of its citizens. Our corrections system must protect citizens from dangerous adult and juvenile offenders while ensuring that there are sufficient resources for treatment, restitution, and community service.
- **HUMAN SERVICES:** Benton County must take a preventive approach to community health needs. We must build relationships with schools, private business and non-profit providers to improve service in the areas of teen pregnancy, family planning, and services to people with disabilities.
- **LAND USE:** Effective planning is the best way to manage growth. I support efforts that preserve farm and forest lands, maintain the integrity of the urban growth boundary, and promote the creation of open space.

GEORGE GROSCH - YOUR COUNTY COMMISSIONER
Together we can maintain and enhance the livability of our communities.

(This information furnished by Grosch for Benton County Commissioner Committee.)



ANNABELLE JARAMILLO

Democrat

OCCUPATION:
Citizens' Representative for Governor John Kitzhaber.

OCCUPATIONAL BACKGROUND:
Pacific Northwest Research Station, US Forest Service; Harakai Systems, Inc.; Center Against Rape & Domestic Violence; Oregon Commission on Hispanic Affairs; The Jaramillo Group.

EDUCATIONAL BACKGROUND: BS., MS. - Portland State University.

PRIOR GOVERNMENTAL EXPERIENCE: Long Term Corvallis/Benton Library Funding Task Force; National Environmental Justice Advisory Council - Environmental Protection Agency; Pacific Northwest Research Station, U.S. Forest Service; Commission on Hispanic Affairs; Oregon Long Term Insurance Project Advisory Board, Senior Service Division; Governor Atiyeh's Education Mission; Governor Kitzhaber's HB2433 implementation Task Force; Treasurer Hills' Conference on Women's Economic Security.

Elect Annabelle Jaramillo Benton County Commissioner

Today, more than ever, our county government needs to work harmoniously. **Annabelle Jaramillo is the kind of leader who can bring our county together.**

Benton County residents value their neighbors, good jobs and a clean, healthy environment. We want our elected officials to plan well and use our resources wisely and we want them to consult us when making decisions for the future.

Annabelle Jaramillo is that kind of leader. She is thoughtful, knowledgeable, a good listener and will work together with county residents to plan for the future.

Annabelle Jaramillo knows County Government can do more to help our communities

- Balancing the demands of population growth with responsible environmental stewardship;
- Caring for our most vulnerable citizens;
- Providing for safe neighborhoods by reducing juvenile crime;
- Taking a stronger role in the education of our children;
- Working with neighboring counties and local governments to fix transportation problems;
- Involving more communities in county decisions.

Annabelle Jaramillo wants to solve problems -- not just manage programs.

We want a County Commission that includes citizens in planning the future.

We want a County Commission that works well together.

We need Annabelle Jaramillo as a Benton County Commissioner.

Elect Annabelle Jaramillo as our County Commissioner.

(This information furnished by Annabelle Jaramillo.)

County Commissioner

BENTON COUNTY
POSITION 1



**LINDA
MODRELL**

Democrat

OCCUPATION:
Policy Development,
Governor's Oregon
Health Plan

**OCCUPATIONAL
BACKGROUND:**
Oregon State
University
Agricultural Sciences
& Extension:
Mgr of Business
Services &
Computer System
Mgr. Admin;
Director, Oregon
Health Services
Commission;

Oregon Community Partnership Team; Small business owner.

EDUCATIONAL BACKGROUND: Oregon State University: MBA, B.S.; Linn-Benton Community College: A.A.

PRIOR GOVERNMENTAL EXPERIENCE: Benton County -- Budget Committee; Corrections Task Force; 5-Year Financial Planning Task Force. State of Oregon -- Healthy Children Cluster; Oregon Option Family Management; School-Based Health Clinics Steering Comm.

LINDA MODRELL: Most Qualified

- 25 yrs. management/policy development
- Oversight/development of budgets up to \$40 million
- Understands state and local corrections issues
- Experience getting federal and state funds for community needs
- 5+ years' knowledge of County's budgets and programs
- Develops common ground and partnerships for problem-solving

LINDA MODRELL: Community Commitment

Linda says, "I raised two sons here in rural Benton County knowing what a special place we have in this valley. To keep it special, we must invest wisely now for our children's future using community values to guide county decisions."

- League of Women Voters • Benton Habitat for Humanity • Corvallis Arts Center • NOW • former Treas. OSU Federal Credit Union • AAUW • Philomath Community Response Team • NAACP • Kiwanis

LINDA MODRELL: Stands for . . .

Accountability. Let's track results to be sure our tax dollars are solving problems and are good investments. We deserve good value for each tax dollar spent.

Prevention. It costs less to prevent than to fix neglect -- whether it's our roads, crime, building tolerance, or protecting our vulnerable citizens and our environment.

Quality of Life. Benton County is one of Oregon's jewels. I'll work hard to protect both its beauty and its prosperity, keeping it livable and making it affordable for all of us.

Your Commissioner for the 21st Century

(This information furnished by Linda Modrell.)

Judge of the Circuit Court

21ST DISTRICT
POSITION 2



**JANET
SCHOENHARD
HOLCOMB**

Nonpartisan

OCCUPATION:
Circuit Court Judge
for Benton County,
21st Judicial District,
Position 2.

**OCCUPATIONAL
BACKGROUND:**
Circuit Court Judge
for Benton County;
Deputy District
Attorney, Benton
County; Deputy City
Attorney, Corvallis;
Associate Deputy City
Attorney, Portland.

EDUCATIONAL BACKGROUND: University of Oregon, School of Law, J.D.; Oregon State University, B.S. in Political Science.

PRIOR GOVERNMENTAL EXPERIENCE: Circuit Court Judge for Benton County, appointed by Governor John Kitzhaber; Benton County Family Violence Council; Deputy District Attorney, Benton County; Local Public Safety Coordinating Council - Juvenile Justice Task Force; Benton County Local Alcohol and Drug Planning Committee; Deputy City Attorney, Corvallis; Associate Deputy City Attorney, Portland.

PROFESSIONAL MEMBERSHIPS AND ACTIVITIES: Member of the Oregon State Bar; United States District Court - District of Oregon; National Council of Juvenile and Family Court Judges; Oregon Circuit Judges Association; Oregon Women Lawyers; Oregon State Bar Law Related Education Committee; Benton County Bar Association.

COMMUNITY SERVICE: Vice President, Altrusa International of Corvallis; Board of Directors, Mentoring Works; Parent Volunteer, Heart of the Valley Children's Choirs; Corvallis 509J Law Related Education; Classroom Law Project volunteer.

JUDGE HOLCOMB is married and has two children. She enjoys birdwatching, sports, theater and blues music.

JUDGE HOLCOMB is a respected member of the legal community. She has a strong background in criminal and juvenile law. She is committed to addressing community concerns regarding children and families.

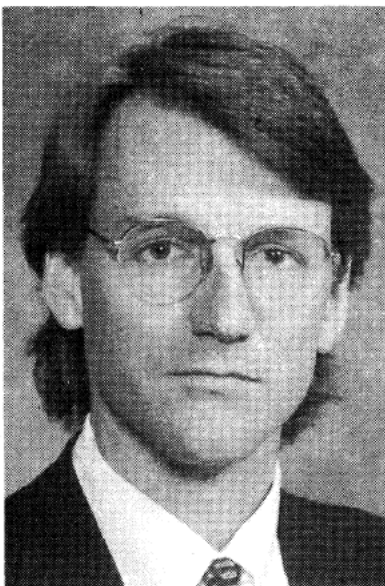
JUDGE HOLCOMB provides a fair and impartial forum for resolving legal disputes. She is patient, understanding and courteous to all who appear in her court. She recognizes and respects the rights of all participants in the administration of justice.

JUDGE HOLCOMB is respected in the community for her honesty, integrity, fairness, common sense and diligence. She serves the people of Benton County with thoughtful strength and dignity.

Please retain JUDGE HOLCOMB as CIRCUIT JUDGE.

(This information furnished by Committee to Elect Circuit Court Judge Janet S. Holcomb.)

District Attorney BENTON COUNTY



SCOTT A. HEISER
Nonpartisan

OCCUPATION: Deputy District Attorney, Benton County, January, 1990-Present

OCCUPATIONAL BACKGROUND: 1987 to 1990 Associate Attorney with Tonkon Torp LLP, Portland Law Firm; 1986 Summer Law Clerk at Tonkon Torp LLP, Portland Law Firm; 1985 Summer Law Clerk to The Honorable

Phillip J. Roth, Multnomah County Circuit Court Judge

EDUCATIONAL BACKGROUND: 1987 J.D. (Magna Cum Laude), Northwestern School of Law, Lewis and Clark College; 1984 B.S. Economics (with Honors), Oregon State University; (Honors College Program); Selected as Outstanding Senior, College Of Liberal Arts

PRIOR GOVERNMENTAL EXPERIENCE: Eight years as Benton County Deputy District Attorney; Prosecutor for Benton County Major Crime Team; Legal and technical advisor to the Willamette Criminal Justice Council; Member, Benton County Information Resources Advisory Committee

SCOTT'S RECORD

- Experienced in major crimes investigations and felony prosecutions (obtained hundreds of felony convictions)
- Scott has obtained convictions in all five homicide cases he has handled
- Extensive administrative experience under the pressure of a heavy caseload
- Excellent reputation for legal scholarship
- Strong advocate for the victim's rights
- Firm but fair prosecutor who aggressively prosecutes domestic violence, DUII and juvenile crime
- Exercises great care in deciding when to seek a Measure 11 conviction

SCOTT HAS THE TRUST & SUPPORT OF THE LAW ENFORCEMENT COMMUNITY

- Benton County Sheriff Stan Robson
- Philomath Police Chief Richard Raleigh
- The Corvallis Police Officers Association
- Benton County Chief Deputy District Attorney Ken Osher

"Scott has proven to me over the past eight years that he has the integrity, experience and skill to be District Attorney. He has my full support and confidence."

Peter F. Sandrock, District Attorney 1977-1998

PERSONAL INFORMATION

Scott is 37 years old; he is married. He enjoys white water kayaking, mountain biking, running and flying airplanes. Scott has lived in Oregon all his life; he has lived in Corvallis for 11 years.

(This information furnished by Heiser for District Attorney, Jeanne Smith Chair & Richard Hendrick Treasurer.)



RICH RODEMAN
Nonpartisan

OCCUPATION: City Attorney and public lawyer.

OCCUPATIONAL BACKGROUND: Rich Rodeman Law Offices; Corvallis City Attorney, Deputy Attorney, Willamette University speech instructor.

EDUCATIONAL BACKGROUND: Willamette University, J.D., Humboldt University, B.A. with honors

PRIOR GOVERNMENTAL EXPERIENCE: Chair, Citizen's Review Board for children; District Attorney's Association 1982-92, League of Cities; legal advisor to City Councils.

FAMILY: Married Kathy Rodeman and father of four son's; two daughters; Kathy is the Business Manager for the Corvallis Schools 509J. Rich has a strong law enforcement background; his dad was in the highway patrol and his grandfather was a police chief.

COMMUNITY INVOLVEMENT

Rich and Kathy support our community. They are involved in United Way, school and athletic events, Scouting and adoption support groups. 20 years experience in Kiwanis community projects and activities, programs for community mediation, libraries, seniors and children.

Past Chair: Benton Bar; Friends of Library; Corvallis Kiwanis; Caring Place Senior Retirement Center.

***** A CAREER PROSECUTOR *****

Rich Rodeman is a prosecutor for 19 years. He has represented CARDV clients who were victims of domestic violence. Rich knows, first hand, what prosecutors need to be effective. He has been a member of the Oregon District Attorney's Association since 1980. He will insure Benton's prosecutors have the tools they need.

***** A DEMONSTRATED LEADER *****

Rich Rodeman has been a leader among Oregon lawyers. Listed in Who's Who In American Law. Chair of Government Law Section. Founder Oregon's City Attorney Association. Benton Bar President 1996-97.

***** PARENTAL RESPONSIBILITY *****

Rich wrote the first Parental Responsibility in Oregon. It requires parents to supervise their children to keep kids from criminal activities. Due to Rich's leadership, this was adopted statewide.

***** ADVOCATE FOR CHILDREN *****

Rich supports aggressive child support enforcement. After 5 years on the Citizens Review Board. Rich has seen the effect that deadbeat parents have on the welfare of children. Rich wants to improve the law to reduce time children spend in foster homes.

VOTE RICH RODEMAN, District Attorney!

(This information furnished by Oregonians for Rodeman.)

District Attorney BENTON COUNTY



**CLARK
WILLES**

Nonpartisan

OCCUPATION:
Attorney

**OCCUPATIONAL
BACKGROUND:**
Attorney; sole practitioner; 1987-present; my practice focuses on criminal law, with extensive trial representation. Law Clerk; U.S. Attorney's Office, Portland, Oregon.

**EDUCATIONAL
BACKGROUND:**
Willamette University

College of Law; Doctorate of Jurisprudence; 1986. Southern Oregon State College; B.A. Economics; 1983. Attended Brigham Young University; Attended Ricks College

PRIOR GOVERNMENTAL EXPERIENCE: None

Volunteer Activities: AYSO referee; Little League umpire; Scout leader; Church youth group leader

Juvenile crime is on the rise, and the serious and violent nature of these offenses is increasing. It is discouraging to see the number of repeat juvenile offenders we have in Benton County. Unfortunately, unless some type of intervention occurs, many of these youth will continue committing crimes and eventually become adult repeat criminals. As Benton County District Attorney I will implement a case assignment system that will provide consistency in the handling of juvenile cases and allow effective tracking of and intervention for these offenders.

My knowledge of current criminal law and trial procedures will enable me to serve the citizens of Benton County in an effective and cost-efficient manner. In addition to my extensive trial and courtroom experience, I am well-versed in the latest changes to Oregon statutes, including recently enacted victims' rights law.

Like any other citizen of Benton County, I want to live in a safe community with the knowledge that my family is being protected from harmful, illegal acts of others. As Benton County District Attorney, I will promote, develop and encourage policies and procedures which will help our communities remain safe, positive, family-oriented places in which to live.

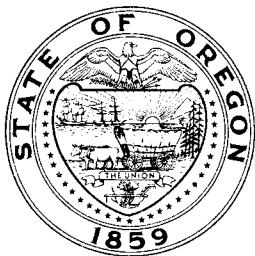
(This information furnished by Clark Willes.)

SECRETARY OF STATE
Phil Keisling
State Capitol Building
Salem, Oregon 97310-0722

BULK RATE
CAR-RT SORT
U.S. Postage
PAID
Portland, OR
Permit No. 815

RESIDENTIAL CUSTOMER

voters' pamphlet



17 Benton

STATE OF OREGON BIENNIAL PRIMARY ELECTION MAY 19, 1998



Please RECYCLE this pamphlet with your newspapers