

BENTON COUNTY VOTERS' PAMPHLET

This is a Polling
Place Election



BENTON COUNTY
O • R • E • G • O • N

**GENERAL ELECTION
NOVEMBER 3, 1998**

PUBLISHED BY THE
BENTON COUNTY
BOARD OF COMMISSIONERS

Please RECYCLE this pamphlet with your newspapers

ATTENTION

This is the beginning of your county voters' pamphlet. The county portion of this joint voters' pamphlet is inserted in the center of the state portion. Each page of the county voters' pamphlet is clearly marked with a black bar on the outside edge. All information contained in the county portion of this pamphlet has been assembled and printed by your Benton County Clerk.



BOARD OF COMMISSIONERS

180 NW 5th Street
Corvallis, OR 97330-4777
(541) 757-6800
FAX (541) 757-6893

Dear Fellow Benton County Voter:

On November 3, 1998, a General Election will be held at which you will have an opportunity to exercise your rights and privileges to elect candidates and enact laws.

The Board of Commissioners has created the Local Voters' Pamphlet in order to provide information about local candidates and measures to assure that the voters of Benton County are well informed about the choices they will face when they go to the polls on November 3.

Included in the Local Voters' Pamphlet is a "Sample Ballot," instructions on voting, information about local candidates, the text of measures and arguments for and against proposed measures, a list of all precincts and polling places and statements provided by both major political parties.

Once again, in an effort to reduce the production and mailing costs associated with providing this information, Benton County has contracted to insert its Local Voters' Pamphlet in the State Voters' Pamphlet.

It is our hope that the information provided herein will assist you in making wise and informed choices for our community.

Sincerely,

Bob Speaker

Bob Speaker
Benton County Commissioner

Patsy Miller

Patsy Miller
Benton County Commissioner

Bob Adams

Orville R. (Bob) Adams
Benton County Commissioner

VOTE!

BENTON COUNTY

Measure No. 02-58

BALLOT TITLE

PUBLIC SAFETY, HEALTH, AND SERVICE MAINTENANCE FIVE-YEAR SERIAL LEVY

QUESTION: To maintain current services, shall Benton County levy 35 cents per \$1,000 assessed valuation, outside permanent rate beginning in 1999-2000?

This measure may cause property taxes to increase more than three percent.

The proposed levy will be in effect for five years.

SUMMARY: Passage of this levy will allow the county to continue to provide critical services.

Due to limitations imposed by statewide Ballot Measures 47 and 50, if this levy fails the county will be required to reduce current services by approximately \$1.0 million.

Two-thirds of the revenue generated from this levy will be used to maintain current services. One-third will be used to create and expand programs that address critical needs identified in recent studies, including:

- A Criminal Offender Control Program to reduce crimes committed by chronic adult and juvenile offenders;
- A team of social service and law enforcement specialists to reduce juvenile delinquency and child abuse;
- Expanded community policing to assist neighborhoods and rural communities in preventing and solving crimes and promoting public safety;
- Expanded alcohol and drug prevention and mental health services.

If the levy is not approved, essential county services will be reduced. Staff reductions will result in fewer services in public safety, public health, land-use planning, parks, and other county departments.

Levy cost estimate is 35 cents per \$1,000 assessed value per year. A home with \$150,000 of assessed value would pay an additional \$4.83 per month or \$53 per year as a result of this levy.

This levy, which maintains essential services and adds critical public health and safety services, is estimated to provide, \$1.57 million in 1999-2000, \$1.65 million in 2000-2001, \$1.73 million in 2001-2002, \$1.82 million in 2002-2003, and \$1.91 million in 2003-2004.

EXPLANATORY STATEMENT

Local Impacts of Statewide Ballot Measures 47 and 50.

Measure 02-58 will allow continuation of county services that will otherwise be discontinued due to limitations imposed by Statewide Ballot Measures 47 and 50. It will also provide additional resources to improve public safety, reduce juvenile crime, and expand certain public health programs. Approximately two-thirds of the revenue generated from this measure will be used to maintain current services. One-third will be used to create and expand programs that address critical needs in public safety and public health that were identified in recent community studies.

Sixty-three percent of Benton County voters opposed Ballot

Measure 47, which narrowly passed statewide. If this local option levy fails, the county will have to make budget reductions of approximately \$1.0 million. This identical measure was approved by 60% of voters in the May, 1998 primary election. However, because voter turnout was less than 50%, the measure failed. Seventy percent of Benton County's General Fund operating budget goes to support personnel. Necessary staff reductions will result in fewer services in public safety, public health, juvenile crime prevention, land-use planning, parks, and other county departments.

Addressing Critical Community Needs

If approved, the levy will address critical needs and citizen concerns identified in several recent studies including: the 1996-97 City of Corvallis and Benton County United Way Community Needs Assessment; the Commission on Children and Families Comprehensive Plan, and the Benton County Juvenile Crime Prevention Plan. Approval of this levy will:

- Continue county services as provided before the passage of Statewide Ballot Measures 47 and 50;
- Create a multi-disciplinary team of social service and law enforcement specialists to collaborate with schools and the community to reduce juvenile delinquency and child abuse;
- Expand community-based law enforcement to help neighborhoods and rural communities quickly resolve public safety issues;
- Increase the number of adult and juvenile probation officers to reduce and control crime through improved supervision, intervention, treatment, and expanded partnerships within the community;
- Provide increased school-based health and drug and alcohol prevention services;
- Provide additional early intervention and prevention services to at-risk children.

Ensuring for the Continuation of Existing Services

County government's role is to ensure citizens receive core services that promote the best interests and well being of the community. These essential core services include:

- Monitoring, protecting, and promoting the health and well-being of Benton County residents in the areas of community health, mental health, and environmental health;
- Law enforcement and corrections services;
- Services for children and families;
- Juvenile crime prevention and supervision of juvenile offenders;
- Management and operation of county roads;
- Management of public records and elections;
- Land use planning, Extension Service, parks, and fairgrounds.

The safety, security and well being of citizens is a fundamental concern of county government and is accomplished through cooperative partnerships with other agencies, organizations, and individual citizens. This measure will allow continuation of current services and improve public safety, reduce juvenile crime, and expand certain public health programs.

Submitted by the Benton County Board of Commissioners.

NO ARGUMENTS AGAINST THIS MEASURE WERE FILED.

BENTON COUNTY

Measure No. 02-58

ARGUMENT IN FAVOR

The residents of Benton County have a strong commitment to preserving the quality of life we enjoy. We consistently rank near the best in Oregon in nearly all public health and safety measures because of this commitment.

In the last six years, statewide initiatives have severely limited the ability of local communities to maintain critical services. These initiatives were soundly defeated in Benton County, but passed statewide.

In May of this year, Benton County citizens overwhelmingly passed this same Measure that is before you now. The Measure could not be implemented because voters statewide didn't repeal the double majority requirement.

Population growth and changes in social conditions are placing more demands on public services and our ranking is declining in 12 of the 14 statewide measures of juvenile and adult crime and public health. While Benton County still ranks highly in nearly all areas, there is cause for concern should these trends continue.

We share the concerns expressed in recent studies - providing positive activities for youth, reducing juvenile crime, and improving health and safety. It's time to invest in our future.

This winter a panel of community leaders reviewed county services, community needs, and funding alternatives. They commended Benton County for increasing efficiency and improving services, but concluded:

"Benton County has used resources responsibly, but is now at the point where additional funds are needed to meet the needs and demands of residents."

After carefully considering recommendations from citizen advisory committees, the community panel, and our staff, we are placing this Measure before you. We believe passage of this Measure is necessary to reverse the negative trends and make the improvements necessary to maintain the quality of life we enjoy.

We thank all of the community members, county employees, and volunteers who work every day to help us achieve these goals.

We urge you to join us in VOTING YES ON MEASURE 02-58 to support our commitment to a safe and healthy community.

Bob Adams
Benton County Commissioner

Bob Speaker
Benton County Commissioner

Patsy Miller
Benton County Commissioner

(This information furnished by Bob Adams, Bob Speaker, Patsy Miller, Benton County Commissioners)

The printing of this argument does not constitute an endorsement by the Benton County, nor does the County warrant the accuracy or truth of any statement made in the argument.

ARGUMENT IN FAVOR

Benton County Measure 02-58 is **identical** to the levy approved by Benton County voters in May, but which was nullified by the state's "double majority" rule. The County is asking voters to **approve the same levy again** in November. The double majority rule will not apply in the November election, so voters can exercise local control.

THE LEVY IS CRITICALLY IMPORTANT FOR PUBLIC SAFETY. It restores 2 Sheriff's deputies and 1 deputy district attorney lost to budget cuts in 1997; it adds 4 new juvenile probation officers and 1 more Sheriff's deputy to work in new crime reduction programs:

1. The **Offender Control Program** targets chronic and juvenile offenders who are at increased risk of committing more crime while on probation. The county levy will be blended with state funds to provide tighter supervision and swifter sanctions for probation violators. The levy will provide four new juvenile probation officers and maintain Benton County's access to seven new juvenile detention cells. The State will fund an additional adult probation officer and continue funding for recently opened Day Reporting Center. The Offender Control probation officer will work in coordination with a school-based interdisciplinary team and with the Neighborhood Community Response teams.
2. The **Neighborhood Community Response teams** will expand community policing countywide to help neighborhoods and rural communities reduce crime and improve safety. The teams will include deputy sheriffs, police officers, prosecutors, adult and juvenile probation officers and citizens specially trained to build partnerships and solve problems. The levy will fund 3 deputy sheriffs and one deputy district attorney. The remaining team positions will be assigned from existing resources. The teams will support existing community policing efforts within the cities and expand community policing practices into rural Benton County.

We request your support for this levy.

Stan Robson, Sheriff Pete Sandrock, District Attorney Scott Heiser, District Attorney-Elect

(This information furnished by Stan Robson, Benton County Sheriff, Pete Sandrock, Benton County District Attorney and Scott Heiser, Benton County District Attorney-Elect)

The printing of this argument does not constitute an endorsement by the Benton County, nor does the County warrant the accuracy or truth of any statement made in the argument.

BENTON COUNTY

Measure No. 02-58

ARGUMENT IN FAVOR

The Commission on Children and Families has the mission of advocating for and assisting in providing for the needs of children and families. We have seen Measures 5 and 47 erode the quality of services available for children and families. We are especially concerned about the incidence of child abuse within our families, substance abuse among youth, and the amount of juvenile crime. We also recognize the need for increased availability of public health services for families in Corvallis, Philomath, North Albany, Monroe, Adair, and rural Benton County.

The Commission on Children and Families supports Measure 02-58 because it will not only restore county services as they were before the passage of Measure 5 and 47, but it will also provide enhanced services that will benefit the children and youth of our community.

Specifically, it will create a multi-disciplinary team of social service and law enforcement specialists who will collaborate with schools and agencies, both public and private, to reduce juvenile delinquency and child abuse.

It will also increase the number of adult and juvenile probation officers who can provide improved supervision, intervention, treatment, and expanded partnerships within the community thereby helping to reduce and control crime.

It will provide for increased school based health and drug and alcohol prevention services.

Teachers in pre-school settings and in the first four grades of elementary school report a high number of children exhibiting severe behavior problems. Resources to provide adequate intervention services for these children do not currently exist and unless those services are provided, competent research reports indicate that these children are at high risk for becoming delinquents. This measure will provide additional early intervention and prevention services for these at-risk children.

We urge you to join us in VOTING YES ON MEASURE 02-58 to support our commitment to quality services for families and children.

(This information furnished by Allen Nickel, Lupe Maginnis, Ray Shimabuku, D. Joan Collison, Bud Fredricks, Daniel Hays, Barbara Mullins, Kathleen Heath, Sally Haffner, Bev Larson, and Sheila Shafer)

The printing of this argument does not constitute an endorsement by the Benton County, nor does the County warrant the accuracy or truth of any statement made in the argument.

ARGUMENT IN FAVOR

We believe in Benton County! It's a great place to live. It's our home and it's worth investing in. That's why we're voting YES on Measure 02-58. It's an investment in the health and safety of our community.

In May, citizens of Benton County approved this same Measure by a 60% margin but voters in the rest of the state did not repeal the double majority requirement so our Measure failed. Now we must approve this Measure again.

Benton County has long been one of the safest places in Oregon. Violent crimes and property crimes are well below state averages. So are child abuse rates and juvenile crime. Our communities have been safe because our citizens have a long history of investing in effective programs to meet our challenges.

Today, some of these trends are moving in the wrong direction. Crime and child abuse rates are rising. If we want to keep our community safe, we need Measure 02-58. This investment will allow us to continue providing vital services that are threatened by previous ballot measures and declining timber revenues.

In our communities, we expect law enforcement officers to be there when we need them. We expect criminals to face consequences when they're convicted of crimes. We expect roads and parks to be well maintained. If we are to continue to meet these high expectations, we must make the necessary investment now!

Measure 02-58 will provide more supervision and consequences for juvenile and adult offenders. It will put more deputy sheriffs out on our streets. It will provide support for our schools by creating a team of specialists to help children with substance abuse, depression, hunger, pregnancy, truancy, and behavior problems.

By making these small but critical investments today, we are securing the future health and safety of the citizens and communities of Benton County.

Join us in voting YES on Measure 02-58 to keep Benton County a great place to live.

(This information furnished by: Ann Hansen, Julie Manning, Bobbie Weber, Jon Carnahan, Barbara Schatz, John Barlow, Marcy Eastham, Mary Anne Deagen, Bev Larson, John Anderson, Hans Neukomm, Pete Bober, Cheryl Black, Jeanne Smith, and Bonnie Helpenstell.)

The printing of this argument does not constitute an endorsement by the Benton County, nor does the County warrant the accuracy or truth of any statement made in the argument.

CITY OF ALBANY

Measure No. 22-65

Measure No. 22-66

BALLOT TITLE

BALLOT TITLE

A MEASURE PROPOSING ANNEXATION OF PROPERTY ADJOINING BROADWAY STREET

QUESTION: Shall the 4.79-acre property adjoining Broadway Street be annexed?

SUMMARY: Approval of this measure would annex approximately 4.79 acres to the City of Albany. The property to be annexed is south of Queen Avenue SW and north of 27th Avenue SW. Upon annexation, the property would be zoned RS-6.5 (Single Family Residential).

A MEASURE PROPOSING ANNEXATION OF PROPERTY ADJOINING GOLDFISH FARM ROAD

QUESTION: Shall the 4.91-acre property adjoining Goldfish Farm Road be annexed?

SUMMARY: Approval of this measure would annex approximately 4.91 acres to the City of Albany. The property to be annexed is north of Santiam Highway SE and south of Knox Butte Road SE. Upon annexation, the property would be zoned CC (Community Commercial).

NO EXPLANATORY STATEMENT FILED

NO EXPLANATORY STATEMENT FILED

NO ARGUMENTS FOR OR AGAINST THIS MEASURE WERE FILED.

NO ARGUMENTS FOR OR AGAINST THIS MEASURE WERE FILED.

CITY OF ALBANY

Measure No. 22-70

BALLOT TITLE

CITY OF ALBANY, AUTHORIZING GENERAL OBLIGATION BONDS FOR STREET RECONSTRUCTION

QUESTION: Shall the City be authorized to issue General Obligation Bonds in an amount not exceeding \$9.85 million for street reconstruction? If the bonds are approved, they will be payable from taxes on property or property ownership that are not subject to the limits of Section 11 or 11b, Article XI of the Oregon Constitution.

SUMMARY: Approval of this measure would provide funds to the City to finance the costs of capital construction and capital improvements, including, but not limited to:

Reconstruct the following streets:

- Santiam Road - East of Main Street to Cleveland Street;
- 34th Avenue - Marion Street to Waverly Drive;
- Elm Street - Queen Avenue to Fifth Avenue;
- Salem Avenue - Waverley Drive to Albany/Millersburg city limits; and pay bond issuance costs

The bonds will mature in 20 years or less.

EXPLANATORY STATEMENT

The Albany City Council is asking Albany voters to approve a \$9.85 million General Obligation Bond at the November election. The funds from that bond will be used for reconstruction of four streets. Those four streets include:

- 34th Avenue from Marion Street to Waverly Drive. In 1994, the portion of 34th Avenue between Marion Street and Pacific Boulevard was rebuilt; so this project would improve all of the rest of 34th Avenue.
- Elm Street between Queen and Fifth Avenue.
- Santiam Road between the end of the couplet (completed by ODOT in 1998) and to 200 feet from Main Street.
- Salem Avenue between Waverly Drive and the Albany-Millersburg boundary.

All four of the streets are collector or arterial streets, meaning that they are major transportation routes through Albany. If the bond passes, it is estimated that the City would begin work on these streets in 1999 and that the last project would be completed in 2002.

General Obligation Bonds are paid for through property taxes. The estimated rate for repayment of the bonds is between 46 and 49 cents per thousand dollars of assessed value. In other words, the estimated average cost for someone who owns a \$100,000 home will be between \$46 and \$49 per year.

Albany's residents selected these four street projects. The City Council conducted a survey of Albany's residents earlier this year. In that survey, the Council asked residents about 16 different street projects. In the survey, 34th Avenue was most often selected as the street in Albany that most needed to be repaired. Elm Street, Santiam Road, and Salem Avenue were seen as the next highest priorities.

NO ARGUMENTS FOR OR AGAINST THIS MEASURE WERE FILED.

CITY OF CORVALLIS

Measure No. 02-65

BALLOT TITLE

A MEASURE TO ALLOW SMOKING IN BARS

QUESTION: Shall the Corvallis Municipal Code be amended to allow smoking in bars?

SUMMARY: A measure to amend Corvallis Municipal Code Sections 5.03.080.160.02 and 5.03.080.160.05 2). This measure would amend the Municipal Code so that bars would be exempt from a prohibition against smoking in public places. The measure would also amend the Municipal Code so that bars would not become subject to City regulations restricting smoking.

EXPLANATORY STATEMENT

The measure contained on the November 3, 1998 ballot is the result of an initiative petition drive.

The City Council, in August 1997, approved an ordinance regulating the distribution, sale, and consumption of tobacco within the City of Corvallis. The prohibition took effect January 1, 1998 except in bars and bar portions of restaurants which was effective July 1, 1998.

Two Corvallis residents filed a prospective petition for a local initiative "to allow smoking in bars" on November 24, 1997. A ballot title was developed based upon the information provided by the petitioners and the "notice of receipt of ballot title" was published in the Corvallis Gazette-Times. Following a request and hearing to review the ballot title, the Circuit Court Judge determined the wording for the ballot title was consistent with the petitioners' intent. The initiative petition was approved for circulation on December 15, 1997.

A total of 1,866 valid signatures was required to "perfect" (e.g., allow it to be placed on the ballot) the initiative petition. On July 27, 1998 Benton County Elections Division confirmed that, in the various signature sheet filings, at least 1,883 valid signatures had been gathered, thus allowing the ballot measure to proceed to a vote of the people.

The City Council received notice of the perfected initiative petition at its August 3, 1998 meeting. Council's choices were to adopt the provisions of the initiative or not adopt the provisions of the initiative and refer it to the voters. Council also had the option of referring a competing measure to the ballot and chose not to do so. Council's position was to recognize that the initiated measure met State regulations regarding placement on the November 1998 ballot and the petition "to allow smoking in bars" was sent, by resolution, to a vote of the people.

If this measure passes, the current Municipal Code provisions relating to smoking in bars will be rescinded and smoking in bars will be allowed. If the measure fails, the current Municipal Code provisions prohibiting smoking within bars will remain in effect. A bar is defined as "an area which is devoted to the serving of alcoholic beverages for consumption by guests on premises and in which the serving of food is only incidental to the consumption of such beverages."

Submitted by the City of Corvallis for publication in the Benton County Voters' Pamphlet.

ARGUMENT IN FAVOR

The present ordinance not allowing smoking in bars should be overturned. The allowance of smoking, or not smoking within an establishment should be determined by the owner of the business. By mandating "No smoking" it is an infringement on the bar owners right to operate the business as he or she chooses. Smoking is not illegal and is an individual choice, bars are private businesses and should be allowed to operate accordingly. The intervention by government on a highly taxed product is enough. Let's allow businesses, their employees, and their customers to determine whether smoking should be allowed on their premises. Vote yes on measure 02-65.

(This information furnished by Citizens for Fair Representation)

The printing of this argument does not constitute an endorsement by the Benton County, nor does the County warrant the accuracy or truth of any statement made in the argument.

CITY OF CORVALLIS

Measure No. 02-65

ARGUMENT IN OPPOSITION

JUST SAY NO TO BIG TOBACCO
VOTE NO ON 02-65

DON'T BE INFLUENCED BY THE TOBACCO INDUSTRY'S LIES AND DECEPTIONS.

The TOBACCO INDUSTRY will vastly outspend local community health workers in Corvallis during this election trying to buy your vote.

The TOBACCO INDUSTRY has used this tactic very successfully in numerous communities, States, as well as the U.S. Congress whenever tobacco related health issues are discussed.

The TOBACCO INDUSTRY knows if they win in Corvallis they are more likely to have their way in other communities in Oregon.

DON'T LET THE TOBACCO INDUSTRY DICTATE HOW CORVALLIS CHOOSES TO PROTECT ITS WORKERS.

The TOBACCO INDUSTRY wants you to think this is about the freedom to smoke in bars.

The TOBACCO INDUSTRY wants you to think this is a social issue.

The TOBACCO INDUSTRY wants you to think this is about jobs.

The TOBACCO INDUSTRY says this is government regulation.

MAKE NO MISTAKE ABOUT IT, THE TOBACCO INDUSTRY HAS LIED TO AND DECEIVED THE AMERICAN PUBLIC FOR YEARS.

Don't let the TOBACCO INDUSTRY's profit motivated influence jeopardize the health of all Corvallis workers. TOBACCO SMOKE IS A TOXIC SUBSTANCE AND ALL WORKERS SHOULD BE PROTECTED, just as mine workers have mandated protection. Tobacco smoke contains numerous carcinogens and it is our responsibility to limit exposure, just as limits were set on lead in gasoline, just as workers are protected from asbestos exposure.

JUST SAY NO TO BIG TOBACCO MONEY
VOTE NO ON 02-65

(This information furnished by Bruce Thomson M.D. Corvallis Family Medicine; President, NW D.O.C. (Doctor's Ought to Care) Corvallis Family Med.

The printing of this argument does not constitute an endorsement by the Benton County, nor does the County warrant the accuracy or truth of any statement made in the argument.

ARGUMENT IN OPPOSITION

VOTE NO ON 02-65
KEEP EQUAL PROTECTION FOR ALL WORKERS!

02-65 would take away health protections that bar workers now have.

By law, all employees in our town are protected from the harmful effects of secondhand smoke in the workplace. **Exempting bars from the smoking restriction implies that workers in bars aren't as important as other workers.** Bar workers deserve the same protection as workers at OSU, HP, and restaurants in our community.

Secondhand smoke kills. Over 62,000 Americans a year die from heart disease due to secondhand smoke. There's overwhelming scientific evidence that secondhand smoke also causes lung cancer and many other health problems.

Secondhand smoke kills bar workers. Workers in smoke-filled bars are exposed to tobacco smoke levels 4-6 times higher than in offices that allow smoking. That's equal to smoking 16 cigarettes in 8 hours. **The death rate of bar workers due to heart disease and lung cancer is "50"-100% higher than for all other workers.**

No workers should have to choose between their health and their jobs. That's why over 100 cities nationwide and the entire state of California now protect all employees from secondhand smoke in the workplace, including bars. And repeated studies have shown that smoke-free ordinances do not lower bars' long-term sales.

Ballot measure 02-65 is fatally flawed. It's written in such a way that it's unclear exactly what it means, or its significance for community health and fair treatment of all workers. Judge Gardner, in ruling on 02-65, said, "I think it detracts from the whole process if folks go in the voting booth and don't really know precisely what they are voting on and that would be my concern" (12/12/97 transcript).

BAR WORKERS DESERVE THE SAME PROTECTION AS THE REST OF US. DON'T TAKE AWAY THEIR RIGHT TO BREATHE AIR ON THE JOB INSTEAD OF OTHER PEOPLE'S SMOKE.

VOTE NO ON 02-65

(This information furnished by Citizens for a Healthy Workplace, John Barlow, Treasurer)

The printing of this argument does not constitute an endorsement by the Benton County, nor does the County warrant the accuracy or truth of any statement made in the argument.

CITY OF CORVALLIS

Measure No. 02-65

ARGUMENT IN OPPOSITION

Vote No On Ballot Measure 02-65
Keep equal health protection in the
workplace for all Corvallis workers

Susan Poole	Randy Huber
Michael Wong, M.D.	Mark Rampton, M.D.
Frank Shaw	Maxine Eckes
Pete Sandrock	Susan Longerbeam
Judy Fortmiller	Rosalie Johnson
Robert Steele, M.D.	Harold Benson
Jane Lubchenco	James Koski, M.D.
Michael Huntington, M.D.	Patrick Aliender, M.D.
Ken Johnson	Scott Heiser
Leon Malkin, M.D.	Marolyn Welch
Robin Lannan, M.D.	John I. Gotchall, M.D.
John Dennis	William TenPas, DMD
John Byrne	Liz Frenkel
Clifford Hall, M.D.	Robert Welch, M.D.
Gay Hall, RN	Donald Takush, M.D.
David Grube, M.D.	Julie Manning
Carl Ramsay, M.D.	Betty Griffiths
Bob Frenkel	John Erkkila, M.D.
Ed Wolf, M.D.	Mohammed S. Mohammed, M.D.
Bud Fredericks	Joanne C Kersey
Lora L. Jasman, M.D.	Rebecca A. Foster
Jim Moorefield	Paul Hochfeld, M.D.
Merry Demarest	Peter E. Johnson
Todd Lewis, M.D.	Barbara Trione
Ernest Richter	Jo Anne Trow
William B. Reeves, M.D.	Harry Demarest
Deborah Kontra	Ralph M. Prows, M.D.
Patricia Benner	Guy L. Hendrix
Sandeep Garg, M.D.	Jean Kliewer, RN
Rev. Arthur Wilmot	Tony Howell
Alan Ertle, M.D.	Elsie F. Ross
L. Wayne Stover	Lenore S. Hata, DDS
Patricia Daniels	Laura Ouellette, M.D.
Jeanne Smith	Robert R. Poole, M.D.
Patrick O'Connell, M.D.	Norman W. Castillo, D.O.
Peter Kenyon, M.D.	Edward Schmitt, M.D.
C. Warren Hovland	James V. Gau
John R. Berry, M.D.	Charles A. Terhune, M.D.
Roger Dreiling, M.D.	Steve Hovland
Lori Hendon, D.O.	Elsie Fulsang, MS3
Robert M. Burton, M.D.	Julie McCann
Troy Fallon, M.D.	Thomas Hart, M.D.
Surin Vasdev, M.D.	Tom Marker, M.D.
Maggie Moran	Patrick Peters
David H. Cutsforth, Jr. M.D.	Kent Daniels
Charles R. Ross	

Bar Workers deserve the same health
protection that the rest of us have.

Vote No on 02-65

*(This information furnished by Citizens for a Healthy
 Workplace, John Barlow, Treasurer; Directors:
 Craig Leman, M.D., Robert Becker, June McMurdo,
 Bruce Thomson, M.D., Ian Duncan, D.O., David Kliewer, M.D.)*

The printing of this argument does not constitute an endorsement by the Benton County, nor does the County warrant the accuracy or truth of any statement made in the argument.

ARGUMENT IN OPPOSITION

Please Vote NO on Measure 02-65

All Working People in Corvallis Deserve
to be Protected from On-the-Job Indoor Air Pollution

Each year, hundreds of Corvallis residents lend their support to your American Lung Association of Oregon and our work on behalf of the more than 300,000 Oregonians with lung disease today--and to prevent lung disease in future generations.

We commend Corvallis for its steps to make sure that all working people in Corvallis have reasonable protection from On-the-Job Indoor Air pollution.

The Corvallis Clean Indoor Air Ordinance Protects
Working People in Corvallis from a Serious,
Deadly Health Risk

Breathing Secondhand, Involuntary Tobacco Smoke is a
Proven, Serious Health Risk.

Health experts worldwide now agree that breathing secondhand tobacco smoke can cause lung cancer, heart disease, and respiratory infections and pneumonia, and is a serious risk for people with asthma.

The Corvallis Clean Indoor Air Ordinance was carefully
developed, by Corvallis citizens for Corvallis citizens, and
is reasonable. Don't let tobacco interests cloud the facts.

Please Vote NO on 02-65. It's a matter of life and breath.

*(This information furnished by Bill Smith, Program Director,
 American Lung Association of Oregon)*

The printing of this argument does not constitute an endorsement by the Benton County, nor does the County warrant the accuracy or truth of any statement made in the argument.

CITY OF CORVALLIS

Measure No. 02-65

ARGUMENT IN OPPOSITION

In 1992, the American Heart Association published a statement concluding that environmental tobacco smoke is a major preventable cause of cardiovascular disease and death. The statement urges that environmental tobacco smoke—often called secondhand smoke—be treated as an environmental toxin, and that ways be found to protect workers and the public from this health hazard. (This statement was published in the August 1992 issue of *Circulation*.) Employers should assess conditions that may result in worker exposure to passive smoke and take steps to reduce exposure to the lowest feasible concentration. The best method for controlling worker exposure is to eliminate tobacco use from the workplace.

Nicotine, the addictive drug contained in tobacco, leads to acute increases in heart rate and blood pressure. Cigarette smoke also increases blood clotting and damages the layer of cells that line all blood vessels, including the coronary arteries. In Oregon, it is estimated that 10% of the 7,000 annual tobacco-caused deaths result from exposure to secondhand smoke. The current local ordinance prohibiting smoking in bars and restaurants guarantees protection from secondhand smoke for both workers and the general public.

The Benton County volunteers of the American Heart Association urge our fellow residents to vote no on Ballot Measure 02-65.

(This information furnished by American Heart Association, Benton County Division)

The printing of this argument does not constitute an endorsement by the Benton County, nor does the County warrant the accuracy or truth of any statement made in the argument.

ARGUMENT IN OPPOSITION

Corvallis is recognized as a leader among communities across Oregon for its commitment to protecting the health of the public and all food and beverage workers by ensuring that the air they breathe is free of noxious tobacco smoke. Now, outside interests are waging a high priced campaign to roll back the smoke-free workplace ordinance.

There is no question that secondhand smoke causes lung cancer, heart disease, and other health problems. In Oregon, MORE THAN TEN PERCENT of the 7,000 annual tobacco-caused deaths result from exposure to secondhand smoke (Oregon Statewide Tobacco Prevention Plan, November 1995).

Across the country, when local communities have taken steps to limit the effects of secondhand smoke, the tobacco industry and its allies have fought those efforts, using outside resources to change the terms of the debate and talk about issues other than health. Do not let it happen in Corvallis.

If passed, Measure 02-65 will deny bar employees the protection afforded other workers in Corvallis from the harmful effects of secondhand smoke. Workers throughout Corvallis are entitled to breath clean air on the job, whether they work in high tech, higher ed, health care, or the food and beverage industry. The ordinance ensures that and should not be changed.

Secondhand smoke is deadly. No amount of outside money or campaign expertise can change that simple fact. Workers throughout Corvallis are safer in their workplaces today than they were before the ordinance was enacted. A vote for Measure 02-65 is a step backwards. Passage of the measure would unfairly single out a particular group of workers and treat them differently.

As a local volunteer of the American Cancer Society I urge you to vote NO on Measure 02-65. People should not have to decide between a paycheck and their health.

(This information furnished by Bob Holt, President of the Benton County Unit of the American Cancer Society)

The printing of this argument does not constitute an endorsement by the Benton County, nor does the County warrant the accuracy or truth of any statement made in the argument.

CITY OF CORVALLIS

Measure No. 02-68

BALLOT TITLE

WILLAMETTE RIVERBANK RESTORATION AND RIVERFRONT PARK GENERAL OBLIGATION BOND MEASURE

QUESTION: Shall the City issue \$9.5 million of general obligation bonds to restore the Willamette Riverbank and improve Riverfront Commemorative Park?

If the bonds are approved, they will be payable from taxes on property or property ownership that are not subject to the limits of sections 11 and 11b, Article XI, of the Oregon Constitution.

SUMMARY: The \$9.5 million of bonds, plus up to \$3.6 million in grants and other funds, will finance improvements to the Willamette Riverbank and Riverfront Park consistent with City Council approved master plans. Riverbank restoration includes west bank Willamette River repairs from Western Boulevard through Van Buren Avenue, including repair of slide areas, re-vegetation, and providing riparian and aquatic habitat. The repairs will protect against future erosion and slides. The Riverfront Park design elements include the park corridor from Shawala Park to Tyler Avenue, a bicycle/pedestrian path, plazas, overlooks, information signage and artwork, park furnishings and amenities (such as benches, restrooms, and fountains), sidewalks, street improvements, surface parking, street furnishings and amenities (such as lighting, benches, and crosswalks) in the Riverfront and First Street area which includes parking and circulation improvements between First and Second Streets and on Western and "B" Avenue from Second to Fifth. The estimated maximum tax rate for the bonds is 31.47¢ per \$1,000 of assessed value. The taxes to repay this debt are exempt from Ballot Measures 5 and 50 limits.

Avenue on the north. First Street improvements, which go from B Avenue to Tyler Avenue will include parking, sidewalks, benches, improved pedestrian crossings including mid-block crossings, and lighting. Parking and traffic circulation improvements will also be made on Western and B Avenues from Second to Fifth Streets.

The total budget for the Riverbank Restoration and Riverfront Park projects is \$13.1 million. If the \$9.5 million bond issue is approved, it will be added to \$3.6 in other City monies, grants and assessments to provide full funding for both projects. The property tax portion of the project is projected to cost 31.47¢ per \$1,000 of assessed value in FY 99-00. This tax rate would result in a tax bill of approximately \$47.20 for the owner of a home assessed at \$150,000 in 1999. By the end of the 20 year debt repayment period, the tax rate is expected to drop to around 9.6¢ per thousand of assessed value for a tax bill close to \$14.50 for the owner of a \$150,000 home. Taxes levied to repay this debt will not be subject to the constitutional limitations adopted through the Measure 5 and 50 initiatives.

More information on both projects is available in the reference section of the Corvallis-Benton County Public Library, 645 NW Monroe.

Submitted by the City of Corvallis for publication in the Benton County Voters' Pamphlet.

EXPLANATORY STATEMENT

The proposed bond issue will fund restoration of the Willamette Riverbank and improvements to the Riverfront Commemorative Park area. The west bank of the Willamette Riverbank along the Downtown area has experienced a number of slides and erosion areas during the last several years, particularly during the floods of 1996. The bank is receding approximately one foot every three years. This project stabilizes the riverbank to preserve the bank environment, including planned vegetation and aquatic habitat. It will also stabilize the high risk slide areas to protect the utility and transportation corridor and proposed Riverfront Park. This project is expected to control long-term operations and maintenance costs by decreasing slide events which have caused erosion and has required repairs to the bicycle/pedestrian path along the riverfront.

The Riverfront Commemorative Park project was developed following extensive public meetings which resulted in the adoption of the 1997 Riverfront Commemorative Park Master Plan. The project is designed to improve the park area and First Street. The Park improvements include a pedestrian and bicycle path, and incorporate plazas, river overlooks, benches, lighting, restrooms, fountains, information signage, and artwork into the Park area bounded by Shawala Park on the south and Tyler

NO ARGUMENTS FOR OR AGAINST THIS MEASURE WERE FILED.

CITY OF CORVALLIS

Measure No. 02-69

BALLOT TITLE

A MEASURE PROPOSING ANNEXATION OF THE SUMMIT CORPORATE PARK PROPERTY

QUESTION: Shall the 83 acre Summit Corporate Park industrial property, north of Reservoir Road and west of 53rd Street, be annexed to the City of Corvallis?

SUMMARY: Approval of this measure would annex approximately 83 acres to the City of Corvallis. The property to be annexed is north of Reservoir Road and west of 53rd Street, is partially developed with an existing wood products mill, and lies entirely within Benton County. Upon annexation, the property would be zoned II, Intensive Industrial, with a PD, Planned Development overlay.

potential increased traffic volumes, potential realignment of Reservoir Road, and potential restoration of the Squaw Creek channel. Street and intersection improvements will be required with future development proposals to accommodate increased traffic impacts.

The City Council has found the annexation request to be consistent with the policies of the Comprehensive Plan and other City and State policies and standards. Citizens are encouraged to become informed about the annexation request. Full copies of the projects staff reports and hearing minutes are available at the Corvallis-Benton County Public Library (645 NW Monroe Avenue) and the Community Development Department at City Hall (501 SW Madison Avenue, 757-6908).

Information submitted by the City of Corvallis.

EXPLANATORY STATEMENT

The 83-acre property proposed for annexation is located within the Corvallis Urban Growth Boundary, south of the Benton County Fairgrounds, west of 53rd Street, and north of Reservoir Road. Development for this area is required to be consistent with the City's Comprehensive Plan which identifies the area as Intensive Industrial. This designation allows a range of industrial uses including manufacturing, processing, or assembling of unfinished or finished products from raw materials. The site would receive a district designation of Intensive Industrial with a Planned Development Overlay, PD (II), upon annexation. The Planned Development (PD) overlay requires public review of future development proposals.

The site has been used in the past as, and remains, a wood products production facility. The applicant has provided a "General Land Use Plan" as required. The plan is advisory and is not binding. It identifies the continuance and possible expansion of Intensive Industrial uses on the site. It also proposes the relocation of Reservoir Road to facilitate safer and improved circulation in the area, the restoration of the Squaw Creek channel to close to its original location (currently the Creek has been diverted to ditches around the property perimeter), and a potential railroad line extension to provide direct service within the subject site. The General Land Use Plan is intended to help identify opportunities and issues associated with annexation, as well as visualize how a site could be developed. However, if the property is not annexed, development can still occur, consistent with the Benton County Industrial standards.

The eventual need to annex and develop this land was identified in 1980 when the City's Comprehensive Plan and Urban Growth Boundary were established. Consistent with City policies, on-site street and utility improvements will be the responsibility of the developer. Regulations also specify that developers will be responsible for off-site costs associated with street and utility improvements needed for this project. Costs for extra-capacity street and utility systems may be eligible for System Development Charge funding. Also, if adjacent properties are annexed, the respective property owners may be required to provide reimbursement for their fair share of these improvements upon development and/or intensification of their properties.

Impacts from increased development of the site include,

NO ARGUMENTS FOR OR AGAINST THIS MEASURE WERE FILED.

CITY OF CORVALLIS

Measure No. 02-70

BALLOT TITLE

A MEASURE PROPOSING ANNEXATION OF THE MEADOWLARK PROPERTY

QUESTION: Shall the 5.37 acre Meadowlark property, south of SW Country Club Drive, between 45th and 49th Streets be annexed?

SUMMARY: Approval of this measure would annex approximately 5.37 acres (5.31 acres of vacant land with 0.06 acres of County-owned right-of-way for SW Country Club Drive) to the City of Corvallis. The property to be annexed is south of Country Club Drive, between SW 45th and SW 49th Streets, and lies entirely within Benton County. Upon annexation, the property would be zoned RS-6, Low Density Residential.

EXPLANATORY STATEMENT

The 5.37-acre property proposed for annexation is located within the Corvallis Urban Growth Boundary, south of Country Club Drive, west of 45th Street, and east of 49th Street. Development for this area is required to be consistent with the City's Comprehensive Plan, which identifies the area as Low Density Residential (2-6 dwelling units per acre). The site would receive a Development District of RS-6 (Low Density Residential) upon annexation.

The City's Comprehensive Plan permits a range of 11 - 32 residential dwelling units for this site. A 31-lot Tentative Subdivision Plat has been approved, contingent upon annexation. The Tentative Subdivision Plat also acts as the applicant's "General Land Use Plan," a required element of annexation requests. The General Land Use Plan is intended to help identify opportunities and issues associated with annexation, as well as visualize how a site could be developed. If the property is not annexed, development can occur consistent with the Benton County Urban Residential - 5-acre minimum parcel size standards.

The Tentative Subdivision Plat approval illustrates a two-phase single family residential subdivision that accesses from Country Club Drive via a newly created 47th Street. Before the second phase of the project can proceed, a second access must be provided. The proposal also provides for some street and sidewalk improvements on the south side of Country Club Drive and a pedestrian/traffic calming facility to provide for a mid-block crossing from the south to Sunset Park.

The eventual need to annex and develop this land was identified in 1980 when the City's Comprehensive Plan and Urban Growth Boundary were established. Consistent with City policies, on-site street and utility improvements will be the responsibility of the developer. Regulations also specify that developers be responsible for off-site costs associated with street and utility improvements needed for this project. Costs for extra-capacity street and utility systems may be eligible for System Development Charge funding. Also, if adjacent properties are annexed, the respective property owners may be required to provide reimbursement for their fair share of these improvements upon development and/or intensification of their properties.

Impacts from eventual development include potential

increased population and increased traffic. Street/intersection improvements will be required with future development proposals to accommodate increased traffic impacts. The Corvallis School District has indicated that if residential development occurs, the increase in students could be accommodated within the existing schools in the area. Funds for future school development will be provided from property taxes collected throughout the 509J School District.

The City Council has found the annexation request to be consistent with the policies of the Comprehensive Plan and other City and State policies and standards. Citizens are encouraged to become informed about the annexation request. Full copies of the project's staff reports and Planning Commission and City Council hearing minutes are available at the Corvallis-Benton County Public Library (645 NW Monroe Avenue) and at the Community Development Department at City Hall (501 SW Madison Avenue, 757-6908).

Information submitted by the City of Corvallis

**NO ARGUMENTS FOR OR AGAINST
THIS MEASURE WERE FILED.**

CITY OF PHILOMATH

Measure No. 02-59

Measure No. 02-60

BALLOT TITLE

BALLOT TITLE

A MEASURE PROPOSING ANNEXATION OF 554 NORTH 9TH STREET

QUESTION: Shall 554 North 9th Street, 2.00 acres located north of Pioneer Street and west of North 9th Street, be annexed?

SUMMARY: Approval of this measure would annex approximately 2.00 acres of land zoned Low Density Residential to the City of Philomath. The property to be annexed is generally north of Pioneer Street and west of North 9th Street. The parcel lies entirely within Benton County. The City currently supplies water services to the property. The owner has consented to annexation. This property contains a single family residence.

MEASURE PROPOSING ANNEXATION OF 458 NORTH 10TH STREET

QUESTION: Shall 458 North 10th Street, 5.80 acres located north of North 10th and east of North 9th Street, be annexed?

SUMMARY: Approval of this measure would annex approximately 5.80 acres of land zoned Low Density Residential to the City of Philomath. The property to be annexed is generally east of North 9th Street and north of the terminus of North 10th Street. The parcel lies entirely within Benton County. The City currently supplies water services to the property. The owner has consented to annexation. This property contains a single family residence.

EXPLANATORY STATEMENT

EXPLANATORY STATEMENT

CITY INITIATED ANNEXATIONS

CITY INITIATED ANNEXATIONS

The City of Philomath is placing six properties before the voters for annexation to the City per the requirements of Section 11.1 of the City Charter. The properties in question: are contiguous to the existing City limits; five are receiving City water and/or sanitary sewer service; have received development approval or are already developed and have no pending plans for further development; and property owners have consented to have the property annexed.

The City of Philomath is placing six properties before the voters for annexation to the City per the requirements of Section 11.1 of the City Charter. The properties in question: are contiguous to the existing City limits; five are receiving City water and/or sanitary sewer service; have received development approval or are already developed and have no pending plans for further development; and property owners have consented to have the property annexed.

Three of the six properties (identified as Ballot Measures 02-59, 02-60, and 02-61) are "islands" of unincorporated property which are surrounded on all sides by the City. These properties are unique in that they have access to and benefit from City services, but do not pay any City property tax.

Three of the six properties (identified as Ballot Measures 02-59, 02-60, and 02-61) are "islands" of unincorporated property which are surrounded on all sides by the City. These properties are unique in that they have access to and benefit from City services, but do not pay any City property tax.

The largest piece of property to be considered for annexation is the Neabeack Hill residential subdivision. Completion of this development is not dependent upon an annexation vote. Residents of this subdivision will continue to have access to City services, but will not pay City property taxes until such time the property is annexed to the City.

The largest piece of property to be considered for annexation is the Neabeack Hill residential subdivision. Completion of this development is not dependent upon an annexation vote. Residents of this subdivision will continue to have access to City services, but will not pay City property taxes until such time the property is annexed to the City.

Submitted by,
Randy Kugler
City Manager

Submitted by,
Randy Kugler
City Manager

NO ARGUMENTS FOR OR AGAINST THIS MEASURE WERE FILED.

NO ARGUMENTS FOR OR AGAINST THIS MEASURE WERE FILED.

CITY OF PHILOMATH

Measure No. 02-61

Measure No. 02-62

BALLOT TITLE

A MEASURE PROPOSING ANNEXATION OF 201 NORTH 20TH PLACE

QUESTION: Shall the 201 North 20th Place property, 1.46 acres located east of College Street, be annexed?

SUMMARY: Approval of this measure would annex approximately 1.46 acres of land zoned Commercial to the City of Philomath. The property to be annexed is generally east of College Street. The parcel lies entirely within Benton County. The City currently supplies water and sewer services to the property. The owner has consented to annexation. This property contains a single family residence.

EXPLANATORY STATEMENT

CITY INITIATED ANNEXATIONS

The City of Philomath is placing six properties before the voters for annexation to the City per the requirements of Section 11.1 of the City Charter. The properties in question: are contiguous to the existing City limits; five are receiving City water and/or sanitary sewer service; have received development approval or are already developed and have no pending plans for further development; and property owners have consented to have the property annexed.

Three of the six properties (identified as Ballot Measures 02-59, 02-60, and 02-61) are "islands" of unincorporated property which are surrounded on all sides by the City. These properties are unique in that they have access to and benefit from City services, but do not pay any City property tax.

The largest piece of property to be considered for annexation is the Neabeack Hill residential subdivision. Completion of this development is not dependent upon an annexation vote. Residents of this subdivision will continue to have access to City services, but will not pay City property taxes until such time the property is annexed to the City.

Submitted by,
Randy Kugler
City Manager

NO ARGUMENTS FOR OR AGAINST THIS MEASURE WERE FILED.

BALLOT TITLE

A MEASURE PROPOSING ANNEXATION OF 1020 NORTH 19TH STREET

QUESTION: Shall 1020 North 19th Street, 1.81 acres located west of North 19th Street and north of Industrial Way, be annexed?

SUMMARY: Approval of this measure would annex approximately 1.81 acres of land zoned Light Industrial to the City of Philomath. The property to be annexed is generally west of North 19th Street and north of Industrial Way. The parcel lies entirely within Benton County. The City currently supplies water and sewer services to the property. The owner has consented to annexation. This property contains a manufacturing facility.

EXPLANATORY STATEMENT

CITY INITIATED ANNEXATIONS

The City of Philomath is placing six properties before the voters for annexation to the City per the requirements of Section 11.1 of the City Charter. The properties in question: are contiguous to the existing City limits; five are receiving City water and/or sanitary sewer service; have received development approval or are already developed and have no pending plans for further development; and property owners have consented to have the property annexed.

Three of the six properties (identified as Ballot Measures 02-59, 02-60, and 02-61) are "islands" of unincorporated property which are surrounded on all sides by the City. These properties are unique in that they have access to and benefit from City services, but do not pay any City property tax.

The largest piece of property to be considered for annexation is the Neabeack Hill residential subdivision. Completion of this development is not dependent upon an annexation vote. Residents of this subdivision will continue to have access to City services, but will not pay City property taxes until such time the property is annexed to the City.

Submitted by,
Randy Kugler
City Manager

NO ARGUMENTS FOR OR AGAINST THIS MEASURE WERE FILED.

CITY OF PHILOMATH

Measure No. 02-63

Measure No. 02-64

BALLOT TITLE

BALLOT TITLE

A MEASURE PROPOSING ANNEXATION OF THE NEABECK HILL SUBDIVISION

QUESTION: Shall the Neabeack Hill Subdivision, 34.22 acres located south of Main Street and north of the Southwood Subdivision, be annexed?

SUMMARY: Approval of this measure would annex approximately 34.22 acres of land zoned Low Density Residential to the City of Philomath. The property to be annexed is generally south of Main Street and north of the Southwood Subdivision. The parcel lies entirely within Benton County. The City currently supplies water and sewer services to the property. The owner has consented to annexation. This property is under development as a residential subdivision.

A MEASURE PROPOSING ANNEXATION OF PROPERTY AT 2651 MAIN STREET

QUESTION: Shall 2651 Main Street, .66 acres located north of Main Street and northeast of South 26th Street, be annexed?

SUMMARY: Approval of this measure would annex approximately .66 acres of land zoned Industrial Park to the City of Philomath. The property to be annexed is generally north of Main Street and northeast of South 26th Street. The parcel lies entirely within Benton County. The City currently supplies no utility services to the property. The owner has consented to annexation. This property is developed with a cabinet manufacturing business.

EXPLANATORY STATEMENT

CITY INITIATED ANNEXATIONS

The City of Philomath is placing six properties before the voters for annexation to the City per the requirements of Section 11.1 of the City Charter. The properties in question: are contiguous to the existing City limits; five are receiving City water and/or sanitary sewer service; have received development approval or are already developed and have no pending plans for further development; and property owners have consented to have the property annexed.

Three of the six properties (identified as Ballot Measures 02-59, 02-60, and 02-61) are "islands" of unincorporated property which are surrounded on all sides by the City. These properties are unique in that they have access to and benefit from City services, but do not pay any City property tax.

The largest piece of property to be considered for annexation is the Neabeack Hill residential subdivision. Completion of this development is not dependent upon an annexation vote. Residents of this subdivision will continue to have access to City services, but will not pay City property taxes until such time the property is annexed to the City.

Submitted by,
Randy Kugler
City Manager

NO ARGUMENTS FOR OR AGAINST THIS MEASURE WERE FILED.

EXPLANATORY STATEMENT

CITY INITIATED ANNEXATIONS

The City of Philomath is placing six properties before the voters for annexation to the City per the requirements of Section 11.1 of the City Charter. The properties in question: are contiguous to the existing City limits; five are receiving City water and/or sanitary sewer service; have received development approval or are already developed and have no pending plans for further development; and property owners have consented to have the property annexed.

Three of the six properties (identified as Ballot Measures 02-59, 02-60, and 02-61) are "islands" of unincorporated property which are surrounded on all sides by the City. These properties are unique in that they have access to and benefit from City services, but do not pay any City property tax.

The largest piece of property to be considered for annexation is the Neabeack Hill residential subdivision. Completion of this development is not dependent upon an annexation vote. Residents of this subdivision will continue to have access to City services, but will not pay City property taxes until such time the property is annexed to the City.

Submitted by,
Randy Kugler
City Manager

NO ARGUMENTS FOR OR AGAINST THIS MEASURE WERE FILED.

CITY OF PHILOMATH

Measure No. 02-66

BALLOT TITLE

**PHILOMATH PARKS OPERATION AND MAINTENANCE
FOUR YEAR SERIAL LEVY**

QUESTION: Shall the City annually tax \$.16372/\$1,000 assessed valuation of real property for four years to provide additional parks maintenance funding?

STATEMENTS: This measure may cause property taxes to increase more than three percent. This measure will last for four years.

SUMMARY: The annual collection of property taxes at the rate of \$.16372/\$1,000 assessed valuation will provide \$20,000 each year for four years to fund increased operation and maintenance activities associated with the adoption of the Parks Master Plan. The Philomath Parks Operation and Maintenance Serial Levy was a recommendation from the citizens Parks Master Plan Advisory Committee. The purpose of the levy is to supplement funding for existing park operations and maintenance as well as future parks to be developed under the Parks Master Plan. In addition to the requested levy, the Parks Master Plan Advisory Committee recommended that System Development Charges for new development be increased, and that the City commit to provide at least \$35,000 for parks operation and maintenance through its annual budget for each year that the levy is in effect. The taxes imposed by this serial option levy to fund the parks operation and maintenance activities are exempt from Ballot Measure 5 and 50 limits.

EXPLANATORY STATEMENT

The City of Philomath recently adopted a Parks Master Plan and ten-year capital improvement program for development of a comprehensive city park system. The Parks Master Plan was the work of a citizen committee that included input from middle and high school-aged youth. Once implemented, this plan is intended to support the needs of both young and old citizens for the next ten years.

The Philomath Parks Operation and Maintenance Serial Levy was a recommendation to the City Council from the Parks Master Plan Advisory Committee. The purpose of the levy is to supplement funding for existing park operations and maintenance as well as future parks to be developed under the Parks Master Plan.

The ten year Park Capital Improvement Plan recommended by the citizen committee includes development of a permanent skateboard facility for area youth; restrooms and river access for Marys River park; development of smaller neighborhood parks within walking distance of residential areas for children and families; and the development of one larger community type park for more active recreation uses.

The levy would provide \$20,000 a year for each of the four years it would be in existence. Residential property with an assessed value of \$120,000 would pay an additional \$19.65 a year, or \$1.64 per month starting in 1999.

Submitted by,
Randy Kugler
City Manager

**NO ARGUMENTS FOR OR AGAINST
THIS MEASURE WERE FILED.**

ALSEA SCHOOL DISTRICT NO. 7J

Measure No. 02-72

BALLOT TITLE

ALSEA SCHOOL DISTRICT NO. 7J, GENERAL OBLIGATION BOND AUTHORIZATION

QUESTION: Shall the District be authorized to issue general obligation bonds in an amount not exceeding \$2,745,000? If the bonds are approved, they will be payable from taxes on property or property ownership that are not subject to the limits of sections 11 and 11b, Article XI of the Oregon Constitution.

SUMMARY: If approved, this measure provides funds to the District to finance the costs of capital construction and capital improvements, including, but not limited to, providing funds to:

- Make site improvements to existing school facilities;
- Construct and furnish a 22,890 square foot gymnasium addition, including locker rooms, storage spaces, public restrooms, teaching stations for physical education and sports activities, a new media center, and a science classroom suite; and
- Pay bond issuance costs.

The Bonds will mature in 30 years or less.

classroom and laboratory spaces for students.

The new entrance with a receptionist's area would contribute to the overall safety of students by permitting increased awareness and monitoring of visitors in the building.

The opportunity for community use of the school resources would increase because of additional parking, a safe drop-off area, additional restrooms, and community access to the existing gym and stage as multi-purpose areas.

This action has been unanimously approved by the Board of Directors of the Alsea School District and the Alsea Citizen Facilities Advisory Committee.

The bond levy amount of \$2,745,000 will provide all of the improvements and additions described above. It is estimated there will be an initial cost of \$4.91 per \$1000 of assessed property value, with this tax rate declining somewhat over the 20-year bond repayment period.

EXPLANATORY STATEMENT

Alsea District 7J is requesting approval of a general obligation bond for the purpose of constructing and furnishing a new addition to include the following:

- a 23,000 square foot gymnasium (to include locker rooms, storage spaces, restrooms, and teaching stations for physical education);
- a library/media center;
- a science classroom, laboratory, and storage area;
- a new entrance with a receptionist's area;
- covered walkways for student movement from one area of the school facilities to another.

The existing gymnasium serves students K-12, which means that student athletes practice as early as 6:30 a.m. and as late as 9:00 p.m. The new gym would allow for more reasonable practice schedules and would also be a safer place for students to participate because walls and storage cabinets would not be close to the playing floor, as they are now. Furthermore, the proposed gym, with the playing floor on the same level as the floor in the existing school, would provide increased seating capacity for community members as well as a facility that could be used for a variety of community activities.

The current media center serves as both library and classroom; consequently, student access to computer stations and research materials is limited. The new media center would serve as the school library and a technology center with increased technological opportunities for both students and community members. The existing media center could be used as a much-needed regular classroom.

The existing science room lacks adequate ventilation and storage areas for chemicals and apparatus, making it hazardous to use and store certain chemicals. The current lab stations are also inadequate. The new science room, lab, and storage areas would meet code requirements and provide safer

NO ARGUMENTS FOR OR AGAINST THIS MEASURE WERE FILED.

CENTRAL SCHOOL DISTRICT NO. 13J

Measure No. 27-34

BALLOT TITLE

CENTRAL SCHOOL DISTRICT NO. 13J GENERAL OBLIGATION BOND AUTHORIZATION

QUESTION: Shall the District be authorized to issue general obligation bonds in an amount not exceeding \$12,400,000? If the bonds are approved they will be payable from taxes on property or property ownership that are not subject to the limits of sections 11 and 11b, Article XI of the Oregon Constitution.

SUMMARY: If approved, bond funds would be used to:

- Construct and furnish a new District School in Monmouth;
- Build and furnish 4 additional classrooms at the high school, and acquire gymnasium bleachers, finish team rooms, and remodel physical education dressing rooms;
- Upgrade the heating and ventilating system at Monmouth Elementary, and Independence Elementary Schools;
- Upgrade playgrounds at Independence and Henry Hill Elementary Schools;
- Upgrade gym floors at Monmouth, Independence, and Henry Hill Elementary Schools;
- Remodel and improve student commons and make improvements to meet ADA requirements at Talmadge Middle School;
- Acquire and furnish modular classrooms and upgrade septic system at Oak Grove School;
- Remodel and improve the basement of Eola Alternative School; and
- Pay issuance cost, and other bond costs.

The bonds will mature in 20 years or less.

EXPLANATORY STATEMENT

Central School District #13J serves approximately 2700 students in two communities of Monmouth and Independence, and a large rural area surrounding the communities. The District encompasses approximately 150 square miles, principally in Polk County, with the boundaries including a small portion of Marion and Benton Counties. Central has an estimated population of 16,307 patrons. The District operates four elementary schools serving grades K-5; one middle school grades 6-8; one high school serving grades 9-12; an alternative school at Eola, and a teen parent education program.

The enrollment for the District has been increasing at an approximate rate of 1.5 to 2.0 % for each of the past ten years. The District has not constructed additional elementary, or middle school classrooms during this time; therefore, the major issue is "OVERCROWDING" of existing facilities. This condition was also identified by a scientific poll conducted in March of 1998. More than 60% of people polled in the District identified overcrowding as the major issue facing the district. The bond measure passed in May 1994 did not include a new school. These proposed bond funds will construct an intermediate school to accommodate the 5th and 6th grades of the District. The six grade class will transfer from Talmadge, leaving Talmadge as a 7th and 8th middle school of approximately 450 students which is what the school was designed to accommodate. To alleviate crowding at each of the four elementary schools the 5th grade classes will be transferred to the new school.

The proposed \$12,400,000 bond measure will:

- Construct and furnish a new district intermediate school in Monmouth;
- Build and furnish 4 additional classrooms at the high school, and acquire gymnasium bleachers, finish team rooms, and remodel physical education dressing rooms.
- Upgrade the heating and ventilating systems at Monmouth and Independence Elementary Schools;
- Upgrade playgrounds at Independence and Henry Hill Elementary Schools;
- Upgrade gym floors at Monmouth, Independence, and Henry Hill Elementary Schools;
- Remodel and improve student commons and make improvements to meet ADA requirements at Talmadge Middle School;
- Acquire and furnish modular classrooms and upgrade septic system at Oak Grove School;
- Remodel and improve the basement of Eola Alternative School; and
- Pay issuance cost, and other bond costs.

The bond will mature in 20 years or less.

The estimated cost to property owners will be \$1.69 for each \$1,000 of assessed value. The District passed a bond measure in 1982 to remodel the high school was retired in 1996. The District also passed a bond measure in 1994 for \$11,765,000. The rate for each \$1,000 of assessed value is presently \$2.30 for each \$1,000 of assessed value. The combined measures will have an estimated cost of \$3.99 for each \$1,000 of assessed value.

Submitted by

Dr. Jack W. Stoops, Superintendent.
Central School District #13J

NO ARGUMENTS FOR OR AGAINST THIS MEASURE WERE FILED.

CENTRAL SCHOOL DISTRICT NO. 13J

Measure No. 27-35

BALLOT TITLE

CENTRAL SCHOOL DISTRICT NO. 13J GENERAL OBLIGATION BOND AUTHORIZATION

QUESTION: Shall the District be authorized to issue general obligation bonds in an amount not exceeding \$1,350,000? If the bonds are approved they will be payable from taxes on property or property ownership that are not subject to the limits of sections 11 and 11b, Article XI of the Oregon Constitution.

SUMMARY: If approved, bond funds would be used to:

- Construct a new connecting road from Hoffman Road in Monmouth to 16th Street near Talmadge Middle School to give access to the new District School to be constructed in Monmouth. The proceeds will be used to pay for road improvements such as culverts or bridges, other than the road itself. The connecting road will meet all requirements for a city street in Monmouth, which includes sidewalks and lighting.
- Pay issuance cost, and other bond costs.

The bonds will mature in 20 years or less.

Monmouth to 16th Street near Talmadge Middle School to give access to the new district school to be constructed in Monmouth on land purchased from 1994 bond funds. The road and bridge will be approximately three tenths of a mile in length. The road will meet all requirements for a city street in Monmouth, which will include sidewalks and lighting. The road improvements may include culverts. The bridge will span Ash Creek and will connect 16th street to the new road.

- Pay issuance cost, and other bond costs

The bond will mature in 20 years or less.

The tax rate for this measure is estimated to be \$.23 for each \$1,000 of assessed value. If both measures on the ballot passes the total cost is estimated to be \$1.92 for each \$1,000 of assessed value.

Submitted by

Dr. Jack W. Stoops, Superintendent.
Central School District #13J

EXPLANATORY STATEMENT

Central School District #13J serves approximately 2700 students in the two communities of Monmouth and Independence, and a large rural area surrounding the communities. The District encompasses approximately 150 square miles, principally in Polk County, with the boundaries including a small portion of Marion and Benton Counties. Central has an estimated population of 16,307 patrons. The District operates four elementary schools serving K-5; one middle school grades 6-8; one high school serving 9-12; an alternative school at Eola, and a teen parent education program.

The District passed a bond measure of \$11,765,000 in May of 1994 which included a project to construct a road extending 16th street near Talmadge Middle School to Hoffman Road. The project included a bridge and a road approximately three tenths mile in length. In designing the bridge the engineers found that there were errors in the original flood plain plan. They could not proceed until this was resolved. It appeared that the flood plain plan would have to be changed which involved the Federal Emergency Management Agency called FEMA. It also appeared that this process would take as much as two years or more. On the basis of this information the District Board of Directors postponed this project until a later date and used the funds to develop needed technology in each of the schools during the 1996-97 fiscal year. During the 1997-98 fiscal year district administrators met with officials to determine what needed to be accomplished to resolve the flood plain problem. The administration has since learned that there are some alternatives that are available without correcting the flood plain plan. Based on this new information the District Board of Directors decided to place this bond measure before the patrons of the District. The Board decided that the measure for the road should be separated from the measure for the new school.

The proposed \$1,350,000 bond measure will:

- Construct a new connecting road from Hoffman Road in

**NO ARGUMENTS FOR OR AGAINST
THIS MEASURE WERE FILED.**

CORVALLIS SCHOOL DISTRICT NO. 509J

Measure No. 02-67

BALLOT TITLE

GENERAL OBLIGATION BOND AUTHORIZATION

QUESTION: Shall the District issue general obligation bonds in a principal amount of not more than \$8,240,000? If the bonds are approved, they will be payable from taxes on property or property ownership that are not subject to the limits of Section 11 and 11b, Article XI of the Oregon Constitution.

SUMMARY: This measure, if approved, would authorize the District to issue general obligation bonds in an amount not to exceed \$8,240,000. Bond proceeds would be used to finance aquatic facilities, including improvements to the Osborne Aquatic Center and other costs of capital construction and improvements. The bonds would mature over a period of not to exceed fifteen years from their date of issuance.

EXPLANATORY STATEMENT

Corvallis voters to consider pool project

Shall the District issue general obligation bonds in a principal amount of not more than \$8,240,000? if the bonds are approved, they will be payable from property taxes that are not subject to Measure 5 or Measure 50 constitutional limitations.

The proposed bond measure would improve the Osborn Aquatic Center and provide money to build an outdoor community pool. The school district owns the pool, which it operates with the City of Corvallis.

For the last 19 years, the aquatic center has provided opportunities for children to learn to swim and develop athletically by participating on swim teams. Many adults exercise and maintain fitness. It also has classes for seniors, pregnant women and people who need specialized water therapy.

Money from the bond measure would fund these improvements to the center:

- A new roof.
- Pool resurfacing.
- A new heating, ventilation and air conditioning system.
- New family dressing rooms.
- Expanded men's and women's locker rooms and showers.
- A community meeting room.
- Child care room, which would allow the center to offer this service.
- A concession stand and other capital improvements.

Proceeds of the bond would also be used to build a new outdoor pool. After nearly 50 years of operation, the district closed the pool at Corvallis High School because it needed cost-prohibitive repairs.

The Corvallis City Council would decide where to site the outdoor swimming facility, which would include:

- Interactive water toys such as fountains and sprayers.
- A lap pool.
- A large water slide.
- A wading area for families to play with younger children.

Unlike the Corvallis High Pool, the new outdoor facility would

be heated and open to the public between four and five months a year.

If the measure passes, property owners would pay an estimated average rate of 22 cents per \$1,000 of the assessed value of their property for approximately 15 years.

More information is available from the school district's communication's office at 757-5852.

NO ARGUMENTS AGAINST THIS MEASURE WERE FILED.

CORVALLIS SCHOOL DISTRICT NO. 509J

Measure No. 02-67

ARGUMENT IN FAVOR

Public swimming facilities in Corvallis are inadequate. The city's one public facility, the Osborn Aquatic Center, is falling into disrepair. Moreover, we have no outdoor public pool. Demand for swimming facilities is growing with 1,000 swimmers visiting the Aquatic Center on an average summer day, and 170,000 visits during the past year.

Swimming Is For Everyone

Many different groups benefit from swimming facilities: "water babies," children learning to swim, disabled people regaining their strength, competitors of all ages improving their racing skills, others getting exercise and relieving stress, seniors keeping fit, teens enjoying wholesome recreation, and families relaxing together. But, if we are to benefit from these activities, we must have sufficient, well-maintained pool facilities available to the public, now and in the future.

Osborn Must Be Upgraded

First we must address the essential repair needs of the Osborn Aquatic Center, including roof replacement, pool resurfacing, and improved ventilation. We must preserve this valuable resource.

Secondly, we must address the urgently-needed expansion of dressing rooms, locker and shower facilities, to meet the needs of the diverse groups using the pool, providing more space and privacy for families with young children, the elderly, and disabled swimmers.

Corvallis Needs An Outdoor Pool

Only a few years ago, Corvallis had an outdoor public pool at Corvallis High School. Unfortunately, the Corvallis High pool deteriorated to a state beyond repair. Now Corvallis is the only city of its size in Oregon without a public outdoor pool. Swimming outdoors is a traditional, healthy, summer activity. Swimming in rivers and gravel pits is not necessarily a safe alternative. Our children, teens, adults, and families deserve attractive, safe, swimming environments, indoors and outdoors.

Vote Yes on Measure 02-67: Yes for Pools!

A YES vote assures a well maintained indoor pool and an outdoor pool for everyone's enjoyment.

(This information furnished by the POSITIVELY POOLS COMMITTEE Don Miller, Treasurer)

The printing of this argument does not constitute an endorsement by the Benton County, nor does the County warrant the accuracy or truth of any statement made in the argument.

PHILOMATH SCHOOL 17J

Measure No. 02-73

BALLOT TITLE

PHILOMATH SCHOOL DISTRICT GENERAL OBLIGATION BOND AUTHORIZATION

QUESTION: Shall Philomath School District be authorized to issue general obligation bonds not exceeding \$9,950,000 to expand and improve its facilities? If the bonds are approved, they will be payable from taxes on property or property ownership that are not subject to the limits of Section 11 and 11b, Article XI of the Oregon Constitution.

SUMMARY: If approved, the measure provides funds to:

- meet increased enrollment demands with additional classrooms, acquire land and construct, equip and furnish a new elementary school for approximately 325 students;
- high school renovations to include replace the heating and ventilation system and windows, remodel locker rooms and restrooms to conform to handicap standards, address safety issues, renovate existing kitchen, regrade and expanding parking;
- middle school renovations to include construct and equip a covered, exterior physical education area and additional locker rooms and restrooms, replace science lab plumbing, expand and improve space for student services and expand parking;
- improve heating and insulation for community rooms at Blodgett and Kings Valley Schools; and
- provide safer bus pickup and delivery areas at District schools and correct drainage at high school and middle school athletic fields.

The bonds will mature over a period not exceeding 20 years from the date of issuance and may be issued in one or more series.

The entire high school and middle school campus requires an improved bus safety and traffic plan, which this projects addresses through routing bus traffic on the campus, rather than through the congestion of 19th and Applegate Streets.

The Philomath Middle School will undergo improvements to bathrooms, locker rooms, replacement plumbing and fixtures to the science lab and increase room for student services and counseling. It will also add a covered exterior area for physical education and recess on rainy days (similar to the elementary school).

Both Kings Valley and Blodgett Schools will have energy efficient heating and insulation added to their cafeteria/gymnasium/community rooms.

All of these improvements are meant to support the educational program. A recent survey of Philomath citizens revealed that 78% of the people rated the schools as excellent to pretty good, and only 1% said poor. The same survey cited 75% of our teachers as being excellent or good (18% were unsure). Of those surveyed 92% said our school enrollment would continue to grow. Recent test scores reveal that our students continue to perform above the statewide average, our high school dropout rate is half that of the rest of the state and 91.2% of our seniors graduate, with 60% going on to higher education.

It is the promise of more students, the potential of overcrowded classrooms by the year 2000, the desire for a continuation of the good schooling, improved learning and the sustaining of excellence which prompted the School Board to place the \$9.95 million dollars bond measure on the November 1998 ballot. None of the bond measure proceeds can be used for salaries or programs, only long-term capital improvements.

EXPLANATORY STATEMENT

The proposed \$9.95 million general obligation bond is designed to meet enrollment demands, remedy overcrowding, address long term building improvements and assure positive environments for instruction.

The Philomath School District student enrollment has grown by 9.2% over the past 4 years. It is projected to grow by another 7.2% during the next two years. This growth will cause our already crowded middle and elementary schools to be beyond the capacity for which they were designed. The School Board and a group of community members have studied these developments carefully and have proposed to build an elementary school for grades K-1 on 19th Street. This will reduce the present elementary school population from grades K-4 to grades 2-5, while decreasing the middle school from grades 5-8 to grades 6-8. The new elementary school designs include the capacity to house 325 students and expand to 500 should that become necessary.

The Philomath High School was built in 1954, originally designed for 400 students. The building now has nearly 600 students in attendance on a daily basis. Some of the building components that have suffered over time, such as heating; windows, bathrooms and plumbing, are ready for replacement.

NO ARGUMENTS AGAINST THIS MEASURE WERE FILED.

PHILOMATH SCHOOL 17J

Measure No. 02-73

ARGUMENT IN FAVOR

The children of the Philomath School District need your YES vote on Measure 02-73. This measure will insure safe and adequate classrooms for all students in our community.

The facts are:

- Our student population is growing. Enrollment in the Philomath schools has grown by 155 students over the past four years (9.2%), and is expected to grow by another 135 students over the next two years (7.2%).
- Both the Philomath Elementary and Middle Schools will exceed the designed capacity limit by September 1999 if no additional classrooms are provided.
- The School Board has reduced a \$16.7 million list of ideal facilities improvements to a \$9.95 million plan. This plan would include a new K-1 school and needed improvements to the infrastructures of all other district schools.
- The new school would be expandable to K-2.
- A new 4/5 grade school would have cost \$1.0 million more than the proposed K-1 school, while the present elementary school is currently best suited for grades 2-5.
- The proposed bond measure would be amortized over 19.25 years, have an interest rate of approximately 5.08% (the lowest rate in many years) and cost \$1.98/thousand of assessed value. This is less than \$1 a day per average Philomath household.
- All income from the bond must be spent on long term capital improvements; none of the income from this bond could be used for salaries, normal maintenance or general expenses. All bond proceeds would be used in Philomath.

Vote **YES** on Measure 02-73. Help provide new classroom space our growing community needs.

A **YES** vote on Measure 02-73 will provide new classroom space and needed improvements at a reasonable cost, and will serve children for years to come. We urge you to vote **YES** on Measure 02-73.

Vote YES on Measure 02-73

(This information furnished by Citizens United for Education)

The printing of this argument does not constitute an endorsement by the Benton County, nor does the County warrant the accuracy or truth of any statement made in the argument.

PALESTINE RURAL FIRE PROTECTION DISTRICT

Measure No. 02-71

BALLOT TITLE

A MEASURE PROPOSING A FIVE-YEAR LOCAL OPTION TAX LEVY

QUESTION: Shall Palestine Rural Fire Protection District impose \$.1758 per \$1000 of assessed value for five years beginning in 1999-2000. This measure may cause property taxes to increase more than three percent.

SUMMARY: There has been a significant increase in the fire protection contract with the City of Albany that is not provided for from the permanent rate limit tax of \$1.2498 per \$1000 of assessed value. Therefore, it is necessary to request a five-year local option operating tax of \$.1758 per \$1000 of assessed value to finance the operation of the District for the next five fiscal years beginning in 1999-2000.

EXPLANATORY STATEMENT

This measure will establish a temporary operating tax to help finance the operations of Palestine Rural Fire Protection District. If this measure passes, the District will impose a tax of \$.1758 per \$1,000 of assessed value within the District for the next five years beginning in 1999-2000. The operating tax rate will be in addition to the permanent rate limit of \$1.2498 per \$1,000 of assessed value.

Board Members:

Roger Biegel
Jim Linn
Dean Underwood
Marvin Gilmour
Betsy Close

NO ARGUMENTS FOR OR AGAINST
THIS MEASURE WERE FILED.

BENTON COUNTY

Commissioner, Position 1



DOUGLAS C. SWEETLAND

OCCUPATION: President, Economic Development Partnership.
OCCUPATIONAL BACKGROUND: Small business owner, non-profit organization management, 14 years insurance industry experience.
EDUCATIONAL BACKGROUND: B.S. Political Science, University of Oregon, 1968; Institute for Organizational

Management, 1991.

PRIOR GOVERNMENTAL EXPERIENCE: Mayor, Junction City, 1983-84; Junction City Planning Comm., 1975-82; Benton County Appointee, Regional Strategies Board, 1996-present.

Community Involvement: Linn Benton Community College Foundation Board (Past President), Corvallis Boys and Girls Club Board, Salvation Army, Linn-Benton Business Education Compact Board, Greater Corvallis Rotary Club (Past President), Southern Willamette Research Corridor, Pacific Northwest Economic Development Council (Past Chair), AYSO Coach, Linn-Benton Community College Advisory Boards.

Personal: Doug is a native Oregonian, a Benton County resident for 14 years. He is married to Bobbie, his wife for 32 years. Doug has 2 married children, son Mike and daughter Molly.

What are Doug Sweetland's thoughts on County government?

Infrastructure: Doug Sweetland recognizes the protection and sound planning of our long term infrastructure investment; roads, bridges and facilities, is a MUST.

Land Use: Doug Sweetland has 20 years experience in land use issues. He understands the need to balance existing laws with flexibility for the property owner.

Administration: Doug Sweetland believes public confidence in County Government needs to be restored to obtain the support of policy decisions made by a cohesive, cooperative County Commission.

Economic Health/Stability: Doug Sweetland has committed the past 8 years to ensure that all residents have an equal opportunity to improve their economic health through business diversification and job creation.

Budget: Doug Sweetland's years of budget experience supports accountability, program innovation and efficiencies to balance declining revenues and programs demands.

Public Safety and Health: Doug Sweetland agrees with the citizens that a community that provides a safe environment and is healthy for all residents will be the accepted practice. Doug Sweetland acknowledges that a safe/healthy community is a prosperous community.

(This information furnished by Committee to Elect Doug Sweetland Benton County Commissioner)

Commissioner, Position 1



LINDA MODRELL

OCCUPATION: Policy Development, Governor's Oregon Health Plan.
OCCUPATIONAL BACKGROUND: OSU Agricultural Sciences & Extension: manager of business services & computer system manager. Director Admin, Oregon Health Services-Commission; Oregon Community Partnership Team; Small business owner.

EDUCATIONAL BACKGROUND: Oregon State University: MBA, B.S.; Linn-Benton Community College: A.A.

PRIOR GOVERNMENTAL EXPERIENCE: Benton County -- Budget Committee; Corrections Task Force; 5-Year Financial Planning Task Force. State of Oregon -- Healthy Children Cluster; Oregon Option Family Management; School-Based Health Clinics Steering Comm.

**Elect LINDA MODRELL
Your Commissioner for the 21st Century**

LINDA MODRELL: Fits the Job

- 25 years management/policy development
- Oversight/development of budgets up to \$40 million
- Understands state and local corrections issues
- Experience getting federal and state funds for community needs
- Provides creative solutions to old problems
- 6 years' knowledge of County's budgets and programs
- Small business experience

LINDA MODRELL: Committed to Community

Linda says, "I raised two sons here in rural Benton County knowing what a special place we have in this valley. To keep it special, we must invest wisely now for our children's future using community values to guide county decisions."

- League of Women Voters • Benton Habitat for Humanity Board
- Corvallis Arts Center Trustee • NOW • former Treas. OSU Federal Credit Union • former Treas. AAUW • Philomath Community Response Team • NAACP • Kiwanis

LINDA MODRELL: Stands for...

Prevention First. It costs less to prevent than to fix neglect -- whether its our roads, crime, building tolerance, or protecting our vulnerable citizens and our environment.

Quality of Life. Benton County is one of Oregon's jewels. I'll work hard to protect both its beauty and its prosperity, keeping it livable and making it affordable for all of us.

Accountability. Let's track results to be sure our tax dollars are solving problems and are good investments. We deserve good value for each tax dollar spent.

(This information furnished by Modrell for Commissioner Campaign)

CITY OF CORVALLIS

Mayor



HELEN BERG

OCCUPATION: Mayor of Corvallis.
OCCUPATIONAL BACKGROUND: Director, OSU Survey Research Center, Retired 1993.
EDUCATIONAL BACKGROUND: University of Wisconsin, BA 1953, Mathematics; OSU, MS 1973, Statistics.
PRIOR GOVERNMENTAL EXPERIENCE: Corvallis City Council 1991-1994; Council President 1993-1994; Mayor

1995-Present.

Last year our community reached consensus on The Corvallis 2020 Vision Statement. It says we value our central city, cultural enrichment and recreation, economic vitality, education and human services, governing and civic involvement, protecting our environment and where people live.

Making steady progress toward this vision, urging every citizen to participate, is the reason I am seeking re-election to the office of Mayor.

During my first term, I HAVE SUPPORTED:

- the new fire station downtown; Madison Avenue improvements; careful plans for the riverfront;
- cultural, ethnic, artistic and recreational diversity;
- Peanut Park and Crystal Lake Sports Field acquisition;
- upgrade and expansion of the Water Treatment Plant; Circle Boulevard/Highway 20 intersection improvements; Airport Industrial Park utilities;
- affordable housing programs;
- Library, Parks and Recreation, Police and Fire learning programs, especially for children;
- extensive citizen involvement and good public process in updating the Comprehensive Plan;
- Kendall Farm Natural Area and Marys River Natural Park acquisition for riverbank protection; final plans to remediate combined sewer overflows;
- neighborhood flood mitigation projects;
- partnerships with nonprofit organizations and local governments;
- local control, in testimony before the State Legislature.

During my second term, I WILL SUPPORT:

- adding parking, bicycle, bus and pedestrian facilities downtown; completing the combined sewer overflow project on time; making a great Corvallis Riverfront;
- freeing our community of prejudice, bigotry and hate;
- diversifying the local economy; approving more affordable housing; extending Walnut to Circle Boulevard; improving the Circle/Highway 99W intersection;
- expanding after-school programs;
- continuing citizen involvement and good public process in implementing the updated Comprehensive Plan;
- acquiring additional parkland and open space; joining regional efforts to take good care of the Willamette;
- building a new fire station in northwest Corvallis.

I ask for your vote on November 3.

(This information furnished by Helen Berg)

Mayor



GUY L. HENDRIX

OCCUPATION: Retired/City Councilor.
OCCUPATIONAL BACKGROUND: US Army Signal Corps, Philomath Telephone Co., Benton Co. Review Printing/Photo Engraving, Hardware Store, Heating & Sheet Metal Worker, Furnace & Boiler Repair, Owned and Managed Mechanical Contracting Business for 40 years.

EDUCATIONAL BACKGROUND: Graduated Coyne Radio & Electrical School, Chicago.

PRIOR GOVERNMENTAL EXPERIENCE: 9 years on Corvallis School Board (2 years as chairman); 3 years on Corvallis City Council.

- STATEMENT -

I believe that the Corvallis Strategic Plan is most important, but I have reservations on the new Comprehensive Plan.

I think that we need to do more for our seniors and youth.

We need cooperation between City, County, School District. Having spent 9 years on the School board should help with this.

The downtown has a parking problem, but the new Comprehensive Plan may be more detrimental to that area than the lack of parking.

We must maintain our present infrastructure and expand it within the City balanced with expansion of the City.

I believe that City staff should emphasize people service when dealing with its citizens.

We keep talking about more parks and open space, but we are not doing enough for the beautification of our existing streets, parks and open space.

Our police force should be for the enforcement of laws, to help our citizens, and not for "fundraising" which it becomes when we put our officers on a quota system.

I believe in "calling it as I see it".

(This information furnished by Guy L. Hendrix)

CITY OF CORVALLIS

Council, Ward 1

Council, Ward 2

No Photo Submitted

GEORGE C. GROSCH

OCCUPATION: Information & Referral Specialist, Benton County.
OCCUPATIONAL BACKGROUND: Resource Developer, Center Against Rape & Domestic Violence; District Executive, Boy Scouts of America.
EDUCATIONAL BACKGROUND: Bachelor of Professional Studies, State University of New York; Associate in

Arts, Jamestown Community College, Jamestown, NY.
PRIOR GOVERNMENTAL EXPERIENCE: City of Corvallis Budget Commission (appointed); City of Corvallis Housing & Community Development Commission (appointed).

The residents of Ward 1 deserve experienced leadership on the Corvallis City Council. I am seeking the position because I have the experience necessary to effectively represent our Ward on the City Council.

As a 14-year resident of Ward 1 I have seen the dramatic changes that have occurred in our ward. The next City Council will be taking steps to address issues of growth, transportation, and public infrastructure that will have a long-term impact on our neighborhoods. We must work together to effectively manage growth along West Hills Road, to maintain the scenic hillsides to the west and north of town, to extend water and sewer service to the City's western boundary, and ensure that business development along Philomath Highway occurs in a planned and orderly manner.

As a member of the City Budget Commission and as chair of the Housing and Community Development Commission I have gained an understanding of the issues facing our Ward and have the experience to engage citizens to develop working solutions to complex issues. The role of a City Councilor is to represent the views of the residents of their Ward, to gain their input and to seek consensus on matters that effect the livability of our community.

Decision making on the Council level must not occur in a vacuum. As your City Councilor I will work to listen to your concerns, seek to resolve conflict, and actively engage Neighborhood Associations and residents in the decision making process. I am proud to be a candidate for City Council and humbly seek your support in the election on November 3rd.

(This information furnished by George C. Grosch)



TOM JENSEN

OCCUPATION: Substitute Teacher, Bartender.
OCCUPATIONAL BACKGROUND: PaperBoy, Agricultural Equipment Operator, Retail Clerk/Cashier, Warehouseman, Residential Training Specialist.
EDUCATIONAL BACKGROUND: BA History OSU '91; BA Anthropology OSU '91; MA Teaching Willamette '96.

PRIOR GOVERNMENTAL EXPERIENCE: None.

Neighbors and residents of Ward 2:

I am asking for the opportunity to represent our ward as city councilor. In the more than thirty years I have lived in Corvallis, I have witnessed great changes in our community. I see several long and short-term issues facing us in the near future.

Responsible boundary growth as well as affordable housing for renters and homeowners are important factors in determining livability. Development in business, industrial, recreational, and mixed-use areas must be well planned. Maintenance and expansion of infrastructure should be designed for longevity and future application. Alternative routes and modes of transportation should be promoted and developed to reduce impact on our streets. Efficient traffic flow and adequate accessible parking contribute to the economic well-being of our city. We must maintain and improve the quality of our public education system, and uphold a level of safety we expect for our children and the community. Solutions beyond taxation can be found to meet these needs.

As councilor, I will make decisions based on logic, common sense, and the outlook of the population. I would like to solicit your views and have the opportunity to act on that feedback. We can enhance the future of our community. Become civically involved by attending city council meetings, and remember me when you vote on November 3rd.

Thank You,
 Tom Jensen

(This information furnished by Tom Jensen)

CITY OF CORVALLIS

Council, Ward 2



WILLIAM "BILL" COHNSTAEDT

OCCUPATION:
Lawyer in private practice.

OCCUPATIONAL BACKGROUND:
Lawyer in Corvallis since 1979.

EDUCATIONAL BACKGROUND:
University of Wisconsin, Madison, Wisconsin. BS 1968; Oakland University, Rochester, Michigan MAT 1970; Golden Gate University Law School, San

Francisco, CA JD 1974.

PRIOR GOVERNMENTAL EXPERIENCE: Corvallis City Council 1989-90.

I, Bill Cohnstaedt, will work to protect and enhance basic city services: 1) police, 2) fire protection, 3) water department, 4) sanitary sewer, 5) streets, 6) parks and recreation, and 7) library. Protection of these services in the political arena and enhancement of them in the budgetary process are the jobs of a City Councilor.

Our present City staff is excellent. To remain the best requires ongoing training, modern equipment, and efficient management dedicated to delivering the above basic services. Our City staff possesses these qualities. City Councilors too often fail to keep their priorities straight as to service to the community rather than special interests.

My priorities will always focus on maintaining and improving basic city services. I'll do everything I can to protect the right of every citizen to receive the best city services possible. We each should enjoy the benefits of living and working in our beautiful city.

The basic challenge to our City Councilors is to keep pace with the rapid changes taking place in our local and national economies. City Councilors must be vigilant to protect and enhance what Corvallis has that is tried and true. I will not lead us in experimental and questionable directions.

As a community, what Corvallis has is unique and worth the effort of every citizen to protect. My commitment to the members of our extraordinary community is to work with each of you to preserve, even as we improve, one of the most desirable communities in all of the U.S.A. to live in: Corvallis, Oregon.

(This information furnished by Cohnstaedt for City Council)

Council, Ward 2



PATRICK PETERS

OCCUPATION:
Executive
Coordinator, OSU-Corvallis Symphony Society.

OCCUPATIONAL BACKGROUND:
Community Connections Specialist, Bonney Enterprises; Human Resources Assistant, Children's Farm Home; Advertising Consultant, Corvallis Gazette-Times.

EDUCATIONAL BACKGROUND:
Junior at Oregon

State University; Sweet Home High School.

PRIOR GOVERNMENTAL EXPERIENCE: Corvallis City Council, 1995 - present (Vice-President, 1997 - present); Corvallis Human Services Committee, 1995 - present; Corvallis Budget Commission, 1995 - present (Vice-Chair 1996 - present).

Patrick Peters believes that we must plan for the changes Corvallis will face in the coming years. By the end of 1998, the Corvallis City Council will have approved revisions to the City's Comprehensive Plan, which guides development in our community. The next city council will adopt the Land Development Codes, implementing the Comprehensive Plan.

Patrick Peters will continue to work for good land-use planning laws to ensure that the quality of life in Corvallis remains high. He will work for a healthy downtown by encouraging alternate modes of transportation as well as providing adequate parking for residents, customers and employees.

Patrick Peters has worked hard for his constituents. In his two terms on the city council, he has worked for the purchase of Peanut Park as well as voted to purchase Kendall Farms and to restore 85 acres to its natural state. During the next two years, he will continue to work for the acquisition of park and open space.

Patrick Peters is dedicated to enhancing the quality of life for workers in Corvallis. He has voted to extend benefits to the domestic partners of city employees and worked to protect employees from the harmful effects of secondhand smoke.

(This information furnished by Patrick Peters)

CITY OF CORVALLIS

Council, Ward 3

Council, Ward 3



NANCY BRADY

OCCUPATION: Attorney, private practice, 1995 to present.
OCCUPATIONAL BACKGROUND: Research consultant, Rand Corporation, '94/'95; Legal Intern, University Legal Assistance, '93/'94.
EDUCATIONAL BACKGROUND: Gonzaga University, J.D. Cum Laude, 1994; Oregon State University, B.S. Political Science,

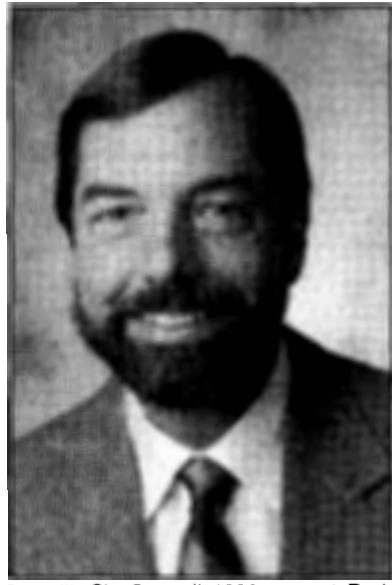
graduated with High Honors, 1991
PRIOR GOVERNMENTAL EXPERIENCE: Albany City Attorney Pro Tem, 1997.

The decisions made today by the City Council will determine the Corvallis of tomorrow. The City Council has many important tasks in the next two years, including developing plans regarding land use and transportation to allow Corvallis to grow, yet at the same time maintaining a livable community.

I started living in Corvallis in 1972. I attended local schools including Oregon State University. Though I have lived in other cities, I chose to come back to Corvallis because of its high quality of life. During the last 26 years Corvallis has seen new subdivisions, businesses and roads built to accommodate growth. Fortunately, despite this growth, the city continues to offer its residents a safe and livable community - the very things that attracted people here in the first place. I believe that with careful planning, Corvallis can continue to grow and still maintain the qualities that we all cherish.

If elected to City Council, I would work hard to try to find ways to accommodate growth, and at the same time preserving the desirable qualities of this community. I would want citizens to get involved in those decisions that will greatly impact the future of this community. Since the decisions made by nine city councilpersons can affect the lives of over 49,000 residents, I believe citizen involvement should be a high priority. In addition, some issues may be so decisive that it should require a vote by the city's residents. Corvallis is **our city** and we should all have a voice in what kind of community we want it to be.

(This information furnished by Nancy Brady)



TONY HOWELL

OCCUPATION: Clinical supervisor, Linn County Alcohol & Drug Treatment Program.
OCCUPATIONAL BACKGROUND: Counselor, research assistant, grocery clerk.
EDUCATIONAL BACKGROUND: Master of Social Work, University of Michigan; B.A., U.C.L.A..
PRIOR GOVERNMENTAL EXPERIENCE:

Corvallis City Council, 1993-present; Budget Commission, 1990-present; Comprehensive Plan Land Use & Mapping committees; South Corvallis Plan Citizen Advisory Committee; Willamette Valley Passenger Rail Advisory Council.

COMMUNITY EXPERIENCE: Past Board President, Community Outreach; Past Board Member, Corvallis Neighborhood Housing Services; Founding Member, Citizen for Sound Planning; South Corvallis Gateway Project; Community Leadership Award, Sierra Club, 1989; Neighborhood Appreciation Award, Avery Homestead Neighborhood Association, 1996.

I have enjoyed serving you for the past six years on the City Council, and hope that I may continue representing your interests and concerns. These are some of my thoughts for approaching the issues facing Corvallis.

Citizen Involvement

Active citizen participation in our local government is a crucial factor in the quality of the decisions that our community makes and in how well those decisions are implemented. I will continue to advocate for involving citizens early in planning and decision-making.

The involvement of Ward 3 residents will be especially important in implementing the new **South Corvallis Plan**, the development of the **Kendall Farm** addition to Willamette Park, future **Riverfront** improvements, and updating the **Land Development Code**.

Managing Growth

As long as Corvallis remains a desirable place to live and work, our city will encounter pressures to grow. We need to plan in advance for orderly growth that pays for itself, maintains neighborhood integrity, provides for alternative transportation, and protects the natural resources and amenities that make Corvallis attractive and economically healthy.

Building a Sustainable Future

One measure of a healthy community is how well we keep our obligations to those who come after us. Our decisions need to maintain a long-range perspective that does not defer cost - economic, social, or environmental - onto our children.

(This information furnished by Tony Howell)

CITY OF CORVALLIS

Council, Ward 5



MIKE BEILSTEIN

OCCUPATION:

Chemist.

OCCUPATIONAL BACKGROUND:

Research chemist at OSU for 20 years.

EDUCATIONAL BACKGROUND:

M.A., Home Economics, OSU, 1991; B.A., Biochemistry, OSU, 1973.

PRIOR GOVERNMENTAL EXPERIENCE:

None.

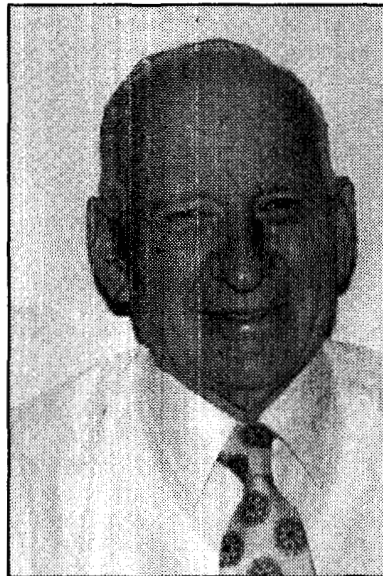
As the Ward 5 councilor I hope to address every city issue from the position that all residents must enjoy the benefits of the prosperity of our community and the progressive tradition that Corvallis has represented in Oregon and in the nation. My primary goal in city council is to enact a living wage ordinance that guarantees workers providing public services through the city and city contractors are paid wages adequate to keep them out of poverty. Until enacted, the living wage is my first item of business, but I will address all city issues with a sensitivity to the needs of working people.

My experience working with Stephen Ministry, Pastors for Peace, Bread for the World, Jobs with Justice, the NAACP, OSU President's Commission on the Status of Women, OSU Students for Peace, Habitat for Humanity, the Pastoral Counseling Center, Mid-Valley Health Care Advocates, Linn-Benton PeaceWorks and the Committees of Correspondence has educated me on the unhappy effects of the growing disparity of wealth and power in the world and in our community. I sincerely believe that looking out for the least of our citizens we will improve the community for us all.

The Linn-Benton-Lincoln Labor Council endorses the living wage campaign and my candidacy.

(This information furnished by Mike Beilstein)

Council, Ward 6



WALT SCHMIDT

OCCUPATION:

Owner - Schmidt's Garden Center.

OCCUPATIONAL BACKGROUND:

Salesman - Whiteside Hardware, Alex Smith Hardware, Roeser's Logging Supply; Property Appraiser for Benton County; Partner - Beck and Schmidt Logging Co.

EDUCATIONAL BACKGROUND:

Corvallis High School Graduate,

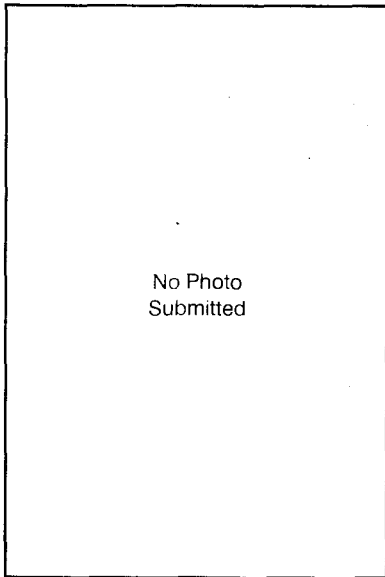
U.S. Army Air Corps Technical Schools, Short Course O.S.U. Property Appraiser.

PRIOR GOVERNMENTAL EXPERIENCE: Benton County Fair Board (Six Years Appointed); Corvallis Fire Department (30 Years Volunteer).

(This information furnished by Walt Schmidt)

CITY OF CORVALLIS

Council, Ward 6



LAURA ELIZABETH RAHFUSE
OCCUPATION:
 Oregon State University:
 Cataloguing Dept.; Squirrel's Tavern.
OCCUPATIONAL BACKGROUND:
 OSU Library; Cataloguing Dept.; OSU Housing, Resident Assistant; student/administration, mediation, programming (educational and social), policy enforcement,

student counseling, crisis intervention; CARDV: Various food/customer service in Corvallis community.

EDUCATIONAL BACKGROUND: Oregon State University (87-94); Kiev Polytechnic Institute, Ukraine (90-91); Returning Student: Senior in Economics with Russian minor.

PRIOR GOVERNMENTAL EXPERIENCE: OSU Residence Hall Association: various positions; OSU, Women in Engineering: Program Director; Project Vote Smart: Volunteer.

(This information furnished by Laura Rahfuse)

Council, Ward 7



TOM WOGAMAN
OCCUPATION:
 Retired Corvallis School Superintendent.
OCCUPATIONAL BACKGROUND:
 Superintendent of Corvallis School District (1972-92) Since retirement: Short periods of service as interim superintendent in Tillamook, McMinnville, Josephine County; and interim Executive Director, Corvallis Area

Chamber of Commerce..

EDUCATIONAL BACKGROUND: B.A. (1952) College of the Pacific; M.A. (1959) and Ed.D. (1965) University of California, Berkeley

PRIOR GOVERNMENTAL EXPERIENCE: Corvallis City Council, Ward 7, 1997-present (elected); Linn-Benton Community College Board of Directors, 1992-present (elected); Public Library and Parks and Recreation Boards (appointed).

In addition to items listed above, my community service has included the following:

- Board of Directors, Community Outreach, Inc. (Sunflower House)
- Board of Directors, OSU-Corvallis Symphony Society
- Ex-officio Member, Board of Directors, Corvallis Area Chamber of Commerce. Given honorary life membership upon retirement as 509J Superintendent
- Board of Directors, Benton County Historical Society
- Volunteer service, Public Library and Historical Society museum
- City's "Charting the Course" Task Force, where I developed a special interest in the riverfront and in keeping our downtown core vibrant
- Active in my church

City government must spend substantial time and energy on issues facing the city as a whole. I feel it is likewise important that problems facing individuals or neighborhoods be taken seriously. I have attempted to fulfill both these responsibilities. I am particularly interested in our riverfront and actively participated in development of the program currently before the community. I also have a strong interest in keeping our downtown core vibrant, in supporting our outstanding library, and in promoting our evolving public transportation system. At the same time I stand available to members of Ward Seven to address individual concerns.

I am completing my first term on the Council. I respectfully ask the voters of Ward Seven for the privilege of representing them for one more term.

(This information furnished by Tom Wogaman)

CITY OF CORVALLIS

Council, Ward 7

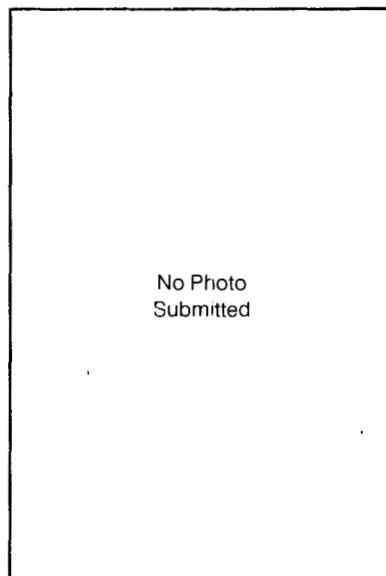


DONNA SCOFIELD
OCCUPATION: Registered Nurse.
OCCUPATIONAL BACKGROUND:
EDUCATIONAL BACKGROUND: AS
 - Nursing, LBCC, graduated 1993.
PRIOR GOVERNMENTAL EXPERIENCE: None.

I am running for city council as a way to give back to the community that I have lived in for 20 years. Corvallis is such a beautiful city. How can we keep it liveable? I believe that bringing in new business to co-exist within the community will lighten the tax load for the homeowner. For our community to remain strong, we must raise a standard, a strong work ethic, so that crime and drugs are not attractive. We must be a safe place to live. We must care for the young people who will be the leaders of tomorrow by encouraging them to reach their maximum potential. I believe that education is mandatory; it is the standard I have set with my own children. Let's find creative ways to express the beauty of our city.

(This information furnished by Donna Scofield)

Council, Ward 7



BOB VEAZIE
OCCUPATION: Production Manager, Hewlett Packard.
OCCUPATIONAL BACKGROUND: Finance and Accounting, Hewlett Packard (1982-1993); Production Management, Hewlett Packard (1993-present).
EDUCATIONAL BACKGROUND: BS, (Finance Management,) Cal Poly, San Luis Obispo; MBA, Long

Beach State University.
PRIOR GOVERNMENTAL EXPERIENCE: Fort Collins, Colorado Liquor Licensing Authority.

I am interested in representing the people of Corvallis as a City Council Member because:

1. Quality of Life - I have lived in wonderful smaller cities most of my life. I have seen how San Luis Obispo, California and Fort Collins, Colorado have intentionally maintained standards for excellent quality of living.
 My family came here for the excellent quality of life that Corvallis offers. Recent decisions, including the placement of hundreds of new homes (tearing up more beautiful hills) adjacent to my neighborhood has me greatly concerned.
2. Representing People - I have strong commitment to the philosophy of Management By Walking Around (MBWA). I stand for a powerful and effective (people's ideas put into action) relationship between public representatives and the people they serve so the representative is voting on behalf of those he/she serves. I will remain close to those I serve by walking our neighborhoods, discussing key city issues with those I serve and implementing your good ideas.
3. Organizational Learning - I have worked for 3 major corporations - Shell Oil Company, Fluor Oil Corporation and now Hewlett Packard Corporation. I will bring my focus for effectiveness to the Corvallis City Council board. Also, I believe I can provide further connection between City Council and a major employer in Corvallis.

As we plan for the next 10-20 years in Corvallis during the next City Council term, I want to represent you as a City Councilor. My family came here for the quality of life in Corvallis. I want this to continually improve. I am Bob Veazie and I hope you vote for me in November!

And by the way, I don't like traffic circles. Because they require yielding, in a society where "Failure to yield the right of way" is the #1 cause of accidents, somebody's going to get seriously hurt. There's a better way.

(This information furnished by Bob Veazie)

CITY OF CORVALLIS

Council, Ward 8



BETTY GRIFFITHS
OCCUPATION: Program Manager, Linn County Alcohol & Drug Program.
OCCUPATIONAL BACKGROUND: Administrator, Consultant, Counselor, Teacher.
EDUCATIONAL BACKGROUND: James Madison University, B.S., 1962 Psychology & History/Oregon State University, Ed.M., 1971 Guidance and Counseling.

PRIOR GOVERNMENTAL EXPERIENCE: Corvallis City Council 1993-1998, Council President 1995-1998; Corvallis Budget Commission 1993-1998; Council liaison to West Corvallis Planning Project Task Force, Open Space Commission, Parks and Recreation Advisory Board and Benton County Family Violence Council.

COMMUNITY SERVICE: Linn Benton Community College, Parent Advisory Board, 1987-1990; Corvallis Community Day Care, Board of Directors, 1975-1977; Governor's Drug & Violent Crime Policy Board 1995-1998

I am proud that I have had the opportunity to serve on the Corvallis City Council as the representative for Ward 8 for the past 5-1/2 years. This has been a challenging, but rewarding time. I have worked hard to understand the issues and to make decisions in the best interest of the entire community.

The next two years will see the completion of many tasks begun over the past four years. These important tasks include revision of the Land Development Code; adoption of a new Storm Water Master Plan; implementation of the Committee for Citizens involvement; and plans for improvements to Riverfront Park. I believe that my experience, my knowledge of the city, and my teamwork and leadership skills will be a valuable resource for completing these goals. Some things that I will continue to support are:

- Long term planning and growth management policies
- Maximum citizen involvement in decision making
- Funding for parks and open space
- Protection of natural resources
- Increasing affordable housing program options
- Intergovernmental cooperation in the delivery of services

I have lived in Corvallis for 30 years with my husband and son and am committed to Corvallis. I hope that you will allow me to continue to represent you so that we can work together to maintain the high quality of life we enjoy in Corvallis.

(This information furnished by Betty Griffiths for City Council Committee)

Council, Ward 8



CLARK WILLES
OCCUPATION: Attorney, sole proprietor.
OCCUPATIONAL BACKGROUND: Attorney, sole practitioner; Law Clerk, U.S. Attorney's Office, Portland, Oregon.
EDUCATIONAL BACKGROUND: Willamette University College of Law; Doctorate of Jurisprudence; 1986; Southern Oregon State College; B.A.

Economics; 1983.

PRIOR GOVERNMENTAL EXPERIENCE: City Attorney; Falls City, Oregon; 1989-1990 (appointed/paid)

FAMILY: Married to Aileen Willes; father of three children - Michael, 16; Kevan, 13; and Jessica, 8. My wife and I moved our family to Corvallis 12 years ago because it is a great place to live.

VOLUNTEER ACTIVITIES:

- Scout Leader
- Church Activities
- AYSO Referee
- Little League Umpire
- School Volunteer

COMMITMENT TO COMMUNITY: I am and have been a homeowner and Corvallis business owner for many years; my children attend local public schools. I have a personal interest in the quality and livability of Corvallis.

DESIRE TO SERVE: I would appreciate the opportunity to serve the residents of Corvallis. My goal is to accurately represent the interests of those residing in Ward 8. I believe that the City Council's decisions and policies should reflect the desires and wishes of the entire community, not just the opinions of a few. My background in law and economics will enable me to efficiently evaluate issues put before the City Council, while keeping cost effectiveness and the long-range consequences of these decisions in sight.

(This information furnished by Clark Willes)

CITY OF CORVALLIS

Council, Ward 9



KENNETH A. DONALDSON

OCCUPATION:
Husband - Father;
Plant Engineer,
Good Samaritan
Hospital.
**OCCUPATIONAL
BACKGROUND:**
U.S. Navy 1965-
1969; Heating and
Air Cond 1970-1989;
Hospital Engineer
1969 to present;
Own and manage
rental property.
**EDUCATIONAL
BACKGROUND:**
Corvallis High
School; L.B.C.C. AS
Refrigeration,

Heating, Air Conditioning.

PRIOR GOVERNMENTAL EXPERIENCE: 1998 Appointed
Rental Housing Code Steering Committee (Corvallis).

I have lived or worked in Corvallis most of my life. My wife JoAnn and I have four grown children.

I have the desire, energy and time to be your City Councilor. I will listen to my neighbors and vote their wishes. I have no hidden agendas.

My primary concerns are the high cost of living in Corvallis and maintaining the quality and character of our community. I do not believe that higher taxes and increasing fees for City services are necessary. As your Councilor I will do my best to curb spending on frivolous programs and codes. I wish that everyone working in Corvallis could afford to live here.

Growth in Corvallis has both positive and negative impacts on our quality of life and I am thankful that future annexation can be decided by voters.

I believe that City sponsored athletic and educational programs for our children is money well spent.

I would like to see the downtown river front project completed, however I am concerned that the increase in property taxes will negatively impact many homeowners and renters.

Please vote for Kenneth Donaldson City Councilor Ward Nine. I will listen to you and vote the wishes of my constituency.

(This information furnished by Kenneth A. Donaldson)

Council, Ward 9



ROSCOE CONKLIN

OCCUPATION:
Retired CEO,
Businessman and
Army Officer now
serving as an unpaid
Comptroller of a
local small business.
**OCCUPATIONAL
BACKGROUND:**
Army Officer;
Licensed Skilled
Nursing Home
Administrator;
Business Owner.
**EDUCATIONAL
BACKGROUND:**
High School Grad
(Bemidji, Minn.);
External B.S. Degree

Program: (Saint Mary's College, Moraga, Calif)

PRIOR GOVERNMENTAL EXPERIENCE: Past Director; Lake
County Fair Board; Hidden Valley Water Board; California Assn.
of Homes for Aged; and 20 years WWII Veteran.

I am running for City Councilor of Ward 9 to give the voters a choice from the present incumbent. I believe the recent city ordinance prohibiting smoking in local bars is driving away customers out of town thus discouraging downtown business and affecting pay of local employees. This is not only bad for downtown businesses but treads on the individual rights of local citizens.

-Roscoe Conklin

(This information furnished by Roscoe Conklin)

CITY OF CORVALLIS

Council, Ward 9



ED BARLOW-PIETERICK

OCCUPATION:
Architect with CH2M HILL.

OCCUPATIONAL BACKGROUND:
U.S. Air Force.
Active duty '73-'77;
Draftsman;
Architect; Adjunct Faculty OSU.

EDUCATIONAL BACKGROUND:
Associate Science in Engineering Design Technologies, University of Nevada; Bachelor of Architecture, University of Oregon.

University of Oregon.

PRIOR GOVERNMENTAL EXPERIENCE: Corvallis City Council '97-'98; Corvallis Budget Committee '97-'98. Serves as a member of the Human Services Committee, the River Front Detailed Design Review Committee and the Comprehensive Plan Coordinating Committee. Also serves as the Council Liaison to the Planning Commission, the Citizen's Advisory Committee on Transit and the Stormwater Master Planning Committee.

COMMUNITY SERVICE:

- Subcommittee Chairperson for the Corvallis Boys and Girls Club
- Coach and Fundraising Chairperson for Odyssey of the Mind
- Committee Chairperson for Cub Scout Pack 324
- Citizens Review Board member for Corvallis Neighborhood Housing Services
- Basketball referee for OSAA, Boys and Girls Club and City League basketball programs

PERSONAL BACKGROUND:

Age: 43; Married; Two Children, 17 and 15

REASON FOR RUNNING:

Running for re-election is important to me because I want to build on the experience I've gained in the last two years as your City Councilor. I've tried hard to learn the governing process and to learn how to weigh the values of each citizen while making decisions. I feel I owe it to Ward 9 to run again and apply what I've learned. I also want to finish some of the work I have started, like the Riverfront Park development, the Comprehensive Plan update, the Land Development Code update, and the Stormwater Masterplan.

If I'm re-elected I will continue my commitment to:

- Protecting the quality of life that distinguishes Corvallis as one of Oregon's most livable cities
- Ensuring that this quality of life can be enjoyed by a culturally and economically diverse citizenry
- Protecting and enhancing the natural features that define Corvallis
- Providing the opportunities for citizen involvement.

(This information furnished by Ed Barlow-Pieterick)

BENTON COUNTY

Precincts & Polling Places

This symbol ★ beside some precincts indicates the entrance to that polling place is free from architectural barriers. Disabled persons who do not vote at such a polling place may vote by absentee ballot. Ballots may also be delivered to a disabled person, by election board member, immediately outside the polling place on election day.

★ 82	Lincoln School 110 SE Alexander Ave Corvallis	★ 95	Benton County Courthouse 120 NW 4th St Corvallis	110	Church of Christ 2020 NW Circle Blvd Corvallis
★ 83	Church of Good Samaritan 333 NW 35th St Corvallis	★ 96	Unitarian Fellowship 2945 NW Circle Blvd Corvallis	★111	Jefferson School 1825 NW 27th St Corvallis
★ 84	Cheldelin Inter. School 987 NE Conifer Blvd. Corvallis	★ 97	Northwest Hills Baptist Church 3300 NW Walnut Blvd Corvallis	★112	Harding School 510 NW 31st St Corvallis
★ 85	Garfield School 1205 NW Garfield Ave Corvallis	★ 98	Wilson School 2701 NW Satinwood St Corvallis	★113	Harding School 510 NW 31st St Corvallis
★ 86	Jefferson School 1825 NW 27th St Corvallis	★ 99	Calvin Presbyterian Church 1736 NW Dixon St Corvallis	★114	Unitarian Fellowship 2945 NW Circle Blvd Corvallis
★ 87	Adams School 1615 SW 35th St Corvallis	★100	First Christian Church 602 SW Madison Ave Corvallis	115	Church of Christ 2020 NW Circle Blvd Corvallis
★ 88	Lincoln School 110 SE Alexander Ave Corvallis	★101	Lincoln School 110 SE Alexander Ave Corvallis	★116	Garfield School 1205 NW Garfield Ave Corvallis
★ 89	Unitarian Fellowship 2945 NW Circle Blvd Corvallis	★102	Adams School 1615 SW 35th St Corvallis	★117	Cheldelin Inter. School 987 NE Conifer Blvd. Corvallis
★ 91	Adams School 1615 SW 35th St Corvallis	★103	LeSells Stewart Center 875 SW 26th St Corvallis	★118	Northwest Hills Church 3300 NW Walnut Blvd Corvallis
★ 92	Adams School 1615 SW 35th St Corvallis	★104	Senior Citizens Center 2601 NW Tyler Ave Corvallis	★119	Benton Center (LBCC) 630 NW 7th St Corvallis
★ 93	Adams School 1615 SW 35th St Corvallis	★105	First Baptist Church 125 NW 10th St Corvallis	★120	Church of Good Samaritan 333 NW 35th St Corvallis
★ 94	Northwest Hills Baptist Church 3300 NW Walnut Blvd Corvallis	★106	First Christian Church 602 SW Madison Ave Corvallis	★121	Lincoln School 110 SE Alexander Ave Corvallis
		★107	Corvallis High School Cafeteria 836 NW 11th St Corvallis	★122	Evangelical Church 1525 NW Kings Blvd Corvallis
		★108	Garfield School 1205 NW Garfield Ave Corvallis	★123	Senior Citizens Center 2601 NW Tyler Ave Corvallis
		★109	Highland View Inter. School 1920 NW Highland Dr Corvallis	★124	Wilson School 2701 NW Satinwood St Corvallis

BENTON COUNTY

Precincts & Polling Places

★125 Corvallis High School Cafeteria 836 NW 11th St Corvallis	★141 Willamette Grange Hall 27555 Greenberry Rd Corvallis	156 First Congregational Church 4515 SW West Hills Rd Corvallis
★126 LaSells Stewart Center 875 SW 26th St Corvallis	★142 Crescent Valley High School 4444 NW Highland Dr Corvallis	★157 Crescent Valley High School 4444 NW Highland Dr Corvallis
★127 Withycombe Hall 30th and Campus Way Corvallis	★143 North Albany Elementary School 815 E Thornton Lake Dr Albany	★158 Mt. View School 340 NE Granger Corvallis
★128 Northwest Hills Baptist Church 3300 NW Walnut Blvd Corvallis	★144 Fir Grove School 5355 NW Scenic Dr Albany	★159 Crescent Valley High School 4444 NW Highland Dr Corvallis
★130 Wren Community Hall 35515 Kings Valley Hwy. Philomath	★145 Suburban Christian Church 2760 SW 53rd St Corvallis	★160 Fir Grove School 5355 NW Scenic Dr Albany
★131 Suburban Christian Church 2760 SW 53rd St Corvallis	★146 Adams School 1615 SW 35th St Corvallis	★161 Philomath High School 2054 Applegate St Philomath
★132 Marys River Grange Hall 24707 Grange Hall Rd Philomath	★147 Lincoln School 110 SE Alexander Ave Corvallis	★163 Fairmount School 1005 NW Springhill Dr Albany
★133 Philomath Library 1050 Applegate St Philomath	★148 Benton County Clubhouse 6097 NE Ebony Ln Corvallis	★164 Fairmount School 1005 NW Springhill Dr Albany
★134 Fairmount School 1005 NW Springhill Dr Albany	★149 Bellfountain Community Church 25387 Dawson Rd Monroe	★165 North Albany Elementary School 815 E Thornton Lake Dr Albany
★135 Oak Grove School 1500 NW Oak Grove Albany	★150 Irish Bend School 27071 Old River Rd Monroe	★166 Oak Grove School 1500 NW Oak Grove Albany
★136 Benton County Fairgrounds 110 SW 53rd St Corvallis	★151 Alpine Fire Dept 25483 Bellfountain Rd Monroe	★167 Crescent Valley High School 4444 NW Highland Dr Corvallis
★137 Alesa School Alesa Hwy Alesa	★152 Benton County Fairgrounds 110 SW 53rd St Corvallis	★168 Crescent Valley High School 4444 NW Highland Dr Corvallis
★138 Blodgett School 35177 Tum Tum Rd Blodgett	★153 Philomath High School 2054 Applegate St Philomath	★169 Philomath Library 1050 Applegate St Philomath
★139 Fairplay School 3855 NE Hwy 20 Corvallis	★154 Inavale School 30252 SW Bellfountain Rd Corvallis	
★140 American Legion Hall Main Street Monroe	★155 Mary's River Grange Hall 24707 Grange Hall Rd Philomath	

SAMPLE BALLOT • GENERAL ELECTION BENTON COUNTY, OREGON • NOVEMBER 3, 1998

**ONLY THE APPROPRIATE CANDIDATES AND MEASURES FOR EACH PRECINCT
WILL APPEAR ON THAT PRECINCT'S BALLOT**

NATIONAL	STATE	STATE REPRESENTATIVE, 36TH DISTRICT VOTE FOR ONE
<p style="text-align: center;">UNITED STATES SENATOR VOTE FOR ONE</p> <p><input type="radio"/> JIM BREWSTER Libertarian</p> <p><input type="radio"/> DEAN M. BRAA Socialist</p> <p><input type="radio"/> RON WYDEN Democrat</p> <p><input type="radio"/> MICHAEL A. CAMPBELL Natural Law</p> <p><input type="radio"/> KARYN MOSKOWITZ Pacific</p> <p><input type="radio"/> JOHN LIM Republican</p> <p><input type="radio"/> -----</p>	<p style="text-align: center;">GOVERNOR VOTE FOR ONE</p> <p><input type="radio"/> RICHARD P. BURKE Libertarian</p> <p><input type="radio"/> BLAIR BOBIER Pacific</p> <p><input type="radio"/> ROGER G. WEIDNER Reform</p> <p><input type="radio"/> BILL SIZEMORE Republican</p> <p><input type="radio"/> PATTI STEURER Natural Law</p> <p><input type="radio"/> TREY SMITH Socialist</p> <p><input type="radio"/> JOHN KITZHABER Democrat</p> <p><input type="radio"/> -----</p>	<p style="text-align: center;">STATE REPRESENTATIVE, 36TH DISTRICT VOTE FOR ONE</p> <p><input type="radio"/> BETSY CLOSE Republican</p> <p><input type="radio"/> JOHN DONOVAN Democrat</p> <p><input type="radio"/> -----</p>
<p style="text-align: center;">UNITED STATES REPRESENTATIVE IN CONGRESS, 4TH DISTRICT VOTE FOR ONE</p> <p><input type="radio"/> STEVE J. WEBB Republican</p> <p><input type="radio"/> KARL G. SORG Socialist</p> <p><input type="radio"/> PETER A. DEFAZIO Democrat</p> <p><input type="radio"/> -----</p>	<p style="text-align: center;">STATE SENATOR, 18TH DISTRICT VOTE FOR ONE</p> <p><input type="radio"/> WIN EATON Republican</p> <p><input type="radio"/> CLIFF TROW Democrat</p> <p><input type="radio"/> -----</p>	<p style="text-align: center;">COUNTY</p> <p style="text-align: center;">COUNTY COMMISSIONER, POSITION 1 VOTE FOR ONE</p> <p><input type="radio"/> DOUGLAS C. SWEETLAND Republican</p> <p><input type="radio"/> LINDA MODRELL Democrat</p> <p><input type="radio"/> -----</p>
<p style="text-align: center;">UNITES STATES REPRESENTATIVE IN CONGRESS, 5TH DISTRICT VOTE FOR ONE</p> <p><input type="radio"/> JIM BURNS Natural law</p> <p><input type="radio"/> BLAINE THALLHEIMER Libertarian</p> <p><input type="radio"/> MARYLIN SHANNON Republican</p> <p><input type="radio"/> ED DOVER Socialist</p> <p><input type="radio"/> MICHAEL DONNELLY Pacific</p> <p><input type="radio"/> DARLENE HOOLEY Democrat</p> <p><input type="radio"/> -----</p>	<p style="text-align: center;">STATE SENATOR, 19TH DISTRICT VOTE FOR ONE</p> <p><input type="radio"/> CAROLYN OAKLEY Republican</p> <p><input type="radio"/> MAE YIH Democrat</p> <p><input type="radio"/> -----</p>	<p style="text-align: center;">NON PARTISAN</p> <p style="text-align: center;">SUPERINTENDENT OF PUBLIC INSTRUCTION VOTE FOR ONE</p> <p><input type="radio"/> STAN BUNN</p> <p><input type="radio"/> MARGARET CARTER</p> <p><input type="radio"/> -----</p>
	<p style="text-align: center;">STATE REPRESENTATIVE, 34TH DISTRICT VOTE FOR ONE</p> <p><input type="radio"/> LANE SHETTERLY Republican</p> <p><input type="radio"/> DAVID SHERMAN Democrat</p> <p><input type="radio"/> -----</p>	<p style="text-align: center;">STATE JUDICIARY</p> <p style="text-align: center;">JUDGE OF THE SUPREME COURT, POSITION NO. 7 VOTE FOR ONE</p> <p><input type="radio"/> BOB TIERNAN</p> <p><input type="radio"/> WILLIAM RIGGS</p> <p><input type="radio"/> -----</p>
	<p style="text-align: center;">STATE REPRESENTATIVE, 35TH DISTRICT VOTE FOR ONE</p> <p><input type="radio"/> BARBARA ROSS Democrat</p> <p><input type="radio"/> -----</p>	<p style="text-align: center;">JUDGE OF THE SUPREME COURT, POSITION NO. 4 VOTE FOR ONE</p> <p><input type="radio"/> SUSAN M. LEESON Incumbent</p> <p><input type="radio"/> -----</p>
		<p style="text-align: center;">JUDGE OF THE COURT OF APPEALS, POSITION NO. 4 VOTE FOR ONE</p> <p><input type="radio"/> VIRGINIA L. LINDER Incumbent</p> <p><input type="radio"/> -----</p>
		<p style="text-align: center;">JUDGE OF THE COURT OF APPEALS, POSITION NO. 7 VOTE FOR ONE</p> <p><input type="radio"/> ROBERT WOLLHEIM Incumbent</p> <p><input type="radio"/> -----</p>

SAMPLE BALLOT • GENERAL ELECTION BENTON COUNTY, OREGON • NOVEMBER 3, 1998

**ONLY THE APPROPRIATE CANDIDATES AND MEASURES FOR EACH PRECINCT
WILL APPEAR ON THAT PRECINCT'S BALLOT**

<p>BENTON COUNTY SOIL AND WATER CONSERVATION DISTRICT</p> <hr/> <p>DIRECTOR, ZONE 1, 4 YEAR TERM-Vote for One</p> <p><input type="radio"/> KAREN BENNETT</p> <p><input type="radio"/> -----</p> <hr/> <p>DIRECTOR, ZONE 2, 2 YEAR TERM-Vote for One</p> <p><input type="radio"/> MARY EICHLER</p> <p><input type="radio"/> -----</p> <hr/> <p>DIRECTOR, ZONE 4, 4 YEAR TERM-Vote for One NO CANDIDATE FILED</p> <p><input type="radio"/> -----</p> <hr/> <p>DIRECTOR, ZONE 5, 4 YEAR TERM-Vote for One NO CANDIDATE FILED</p> <p><input type="radio"/> -----</p> <hr/> <p style="text-align: center;">COUNTY</p> <hr/> <p>BENTON COUNTY SHERIFF VOTE FOR ONE</p> <p><input type="radio"/> STAN ROBSON</p> <p><input type="radio"/> -----</p> <hr/> <p style="text-align: center;">CITY OF ADAIR VILLAGE</p> <hr/> <p>MAYOR - 2 YEAR TERM VOTE FOR ONE</p> <p><input type="radio"/> GREGORY SCOTT EDMAISTON</p> <p><input type="radio"/> STEPHEN CRAIG BARTLETT</p> <p><input type="radio"/> -----</p> <hr/> <p style="text-align: center;">CITY COUNCIL</p> <p>HIGHEST NUMBER OF VOTES - 4 YEAR TERM NEXT HIGHEST NUMBER OF VOTES - 2 YEAR TERM</p> <p>VOTE FOR TWO</p> <p><input type="radio"/> CHARLES PHILLIPS</p> <p><input type="radio"/> ROBERT THAYER</p> <p><input type="radio"/> KERRY GOONAN</p> <p><input type="radio"/> -----</p> <p><input type="radio"/> -----</p>	<p style="text-align: center;">CITY OF ALBANY</p> <hr/> <p style="text-align: center;">MAYOR</p> <p>2 YEAR TERM - VOTE FOR ONE</p> <p><input type="radio"/> CHARLES "CHUCK" MCLARAN</p> <p><input type="radio"/> -----</p> <hr/> <p style="text-align: center;">CITY COUNCIL - WARD 1 4 YEAR TERM</p> <p>VOTE FOR ONE</p> <p><input type="radio"/> RICHARD OLSEN</p> <p><input type="radio"/> KENT HICKAM</p> <p><input type="radio"/> -----</p> <hr/> <p style="text-align: center;">CITY OF CORVALLIS</p> <hr/> <p style="text-align: center;">MAYOR</p> <p>4 YEAR TERM - VOTE FOR ONE</p> <p><input type="radio"/> HELEN BERG</p> <p><input type="radio"/> GUY L. HENDRIX</p> <p><input type="radio"/> -----</p> <hr/> <p>COUNCIL PERSON - WARD 1 2 YEAR TERM</p> <p>VOTE FOR ONE</p> <p><input type="radio"/> JIM MINARD</p> <p><input type="radio"/> GEORGE C. GROSCH</p> <p><input type="radio"/> -----</p> <hr/> <p>COUNCIL PERSON - WARD 2 2 YEAR TERM</p> <p>VOTE FOR ONE</p> <p><input type="radio"/> PATRICK PETERS</p> <p><input type="radio"/> THOMAS JENSEN</p> <p><input type="radio"/> WILLIAM COHNSTAEDT</p> <p><input type="radio"/> -----</p> <hr/> <p>COUNCIL PERSON - WARD 3 2 YEAR TERM</p> <p>VOTE FOR ONE</p> <p><input type="radio"/> NANCY BRADY</p> <p><input type="radio"/> TONY HOWELL</p> <p><input type="radio"/> -----</p> <hr/> <p>COUNCIL PERSON - WARD 4 2 YEAR TERM</p> <p>VOTE FOR ONE</p> <p><input type="radio"/> CHARLES C. TOMLINSON</p> <p><input type="radio"/> -----</p>	<p>COUNCIL PERSON - WARD 5 2 YEAR TERM</p> <p>VOTE FOR ONE</p> <p><input type="radio"/> MIKE BEILSTEIN</p> <p><input type="radio"/> -----</p> <hr/> <p>COUNCIL PERSON - WARD 6 2 YEAR TERM</p> <p>VOTE FOR ONE</p> <p><input type="radio"/> WALT M. SCHMIDT</p> <p><input type="radio"/> LAURA RAHFUSE</p> <p><input type="radio"/> -----</p> <hr/> <p>COUNCIL PERSON - WARD 7 2 YEAR TERM</p> <p>VOTE FOR ONE</p> <p><input type="radio"/> TOM WOGAMAN</p> <p><input type="radio"/> DONNA SCOFIELD</p> <p><input type="radio"/> BOB VEAZIE</p> <p><input type="radio"/> -----</p> <hr/> <p>COUNCIL PERSON - WARD 8 2 YEAR TERM</p> <p>VOTE FOR ONE</p> <p><input type="radio"/> CLARK WILLES</p> <p><input type="radio"/> BETTY GRIFFITHS</p> <p><input type="radio"/> -----</p> <hr/> <p>COUNCIL PERSON - WARD 9 2 YEAR TERM</p> <p>VOTE FOR ONE</p> <p><input type="radio"/> ED BARLOW-PIETERICK</p> <p><input type="radio"/> ROSS CONKLIN</p> <p><input type="radio"/> KENNETH A. DONALDSON</p> <p><input type="radio"/> -----</p>
---	---	---

SAMPLE BALLOT • GENERAL ELECTION BENTON COUNTY, OREGON • NOVEMBER 3, 1998

**ONLY THE APPROPRIATE CANDIDATES AND MEASURES FOR EACH PRECINCT
WILL APPEAR ON THAT PRECINCT'S BALLOT**

<p style="text-align: center;">CITY OF MONROE</p> <hr/> <p style="text-align: center;">MAYOR - 2-YEAR TERM VOTE FOR ONE FLOYD BILLINGS</p> <p><input type="radio"/> _____</p> <p><input type="radio"/> _____</p> <hr/> <p style="text-align: center;">COUNCIL - 4 YEAR TERMS VOTE FOR THREE TONY BAKER</p> <p><input type="radio"/> _____</p> <p><input type="radio"/> TERRY S. THOMPSON</p> <p><input type="radio"/> CLIFFORD FRANK THAYER</p> <p><input type="radio"/> TERRY L. KOROUGH</p> <p><input type="radio"/> _____</p> <p><input type="radio"/> _____</p> <p><input type="radio"/> _____</p> <hr/> <p style="text-align: center;">CITY OF PHILOMATH</p> <hr/> <p style="text-align: center;">MAYOR VOTE FOR ONE VAN O. HUNSAKER</p> <p><input type="radio"/> _____</p> <p><input type="radio"/> _____</p> <hr/> <p style="text-align: center;">CITY COUNCILOR VOTE FOR SIX</p> <p><input type="radio"/> SUSAN CRAIG-ASCHOFF</p> <p><input type="radio"/> MARILYN L. SLIZESKI</p> <p><input type="radio"/> DAN MCCABE</p> <p><input type="radio"/> RICHARD MATSON</p> <p><input type="radio"/> NITA ROSS</p> <p><input type="radio"/> LEO W. REETZ</p> <p><input type="radio"/> TONI HOYMAN</p> <p><input type="radio"/> _____</p> <p><input type="radio"/> _____</p> <p><input type="radio"/> _____</p> <p><input type="radio"/> _____</p> <p><input type="radio"/> _____</p> <p><input type="radio"/> _____</p> <p><input type="radio"/> _____</p>	<p style="text-align: center;">STATE MEASURES</p> <p style="text-align: center;">SEE TEXT OF MEASURES ON SEPARATE SHEET OR POSTED IN VOTING BOOTH</p> <hr/> <p style="text-align: center;">REFERRED TO THE PEOPLE BY THE LEGISLATIVE ASSEMBLY</p> <p>54 AMENDS CONSTITUTION: AUTHORIZES STATE TO GUARANTEE BONDED INDEBTEDNESS OF CERTAIN EDUCATION DISTRICTS</p> <p>RESULT OF "YES" VOTE: "Yes" vote authorizes state to guarantee general obligation bonds issued by certain education districts.</p> <p><input type="radio"/> YES</p> <p>RESULT OF "NO" VOTE: "No" vote retains prohibition against state guarantee of general obligation bonds issued by education districts.</p> <p><input type="radio"/> NO</p> <hr/> <p>55 AMENDS CONSTITUTION: PERMITS STATE TO GUARANTEE EARNINGS ON PREPAID TUITION TRUST FUND</p> <p>RESULT OF "YES" VOTE: Vote "Yes" to authorize state to guarantee earnings under tuition trust fund program.</p> <p><input type="radio"/> YES</p> <p>RESULT OF "NO" VOTE: Vote "No" to refuse authorization to guarantee earnings under tuition trust fund program.</p> <p><input type="radio"/> NO</p> <hr/> <p>56 EXPANDS NOTICE TO LANDOWNERS REGARDING CHANGES TO LAND USE LAWS</p> <p>RESULT OF "YES" VOTE: "Yes" vote requires governments to mail notice to landowners regarding changes to land use laws.</p> <p><input type="radio"/> YES</p> <p>RESULT OF "NO" VOTE: "No" vote retains current notice requirements, which do not require mailed notice to landowners.</p> <p><input type="radio"/> NO</p> <hr/> <p style="text-align: center;">REFERRED TO THE PEOPLE BY REFERENDUM PETITION</p> <p>57 MAKES POSSESSION OF LIMITED AMOUNT OF MARIJUANA CLASS C MISDEMEANOR</p> <p>RESULT OF "YES" VOTE: "Yes" vote makes possession of less than one ounce of marijuana a Class C misdemeanor.</p> <p><input type="radio"/> YES</p> <p>RESULT OF "NO" VOTE: "No" vote retains statute making possession of less than one ounce of marijuana a violation.</p> <p><input type="radio"/> NO</p> <hr/> <p style="text-align: center;">PROPOSED BY INITIATIVE PETITION</p> <p>58 REQUIRES ISSUING COPY OF ORIGINAL OREGON BIRTH CERTIFICATE TO ADOPTEEES</p> <p>RESULT OF "YES" VOTE: "Yes" vote requires issuing copy of original Oregon birth certificate to adult adoptees upon request.</p> <p><input type="radio"/> YES</p> <p>RESULT OF "NO" VOTE: "No" vote retains confidentiality of original Oregon birth certificate of adoptees unless court orders disclosure.</p> <p><input type="radio"/> NO</p>	<p>59 AMENDS CONSTITUTION: PROHIBITS USING PUBLIC RESOURCES TO COLLECT MONEY FOR POLITICAL PURPOSES</p> <p>RESULT OF "YES" VOTE: "Yes" vote prohibits using public resources to collect or help collect political funds.</p> <p><input type="radio"/> YES</p> <p>RESULT OF "NO" VOTE: "No" vote rejects prohibition on using public resources to collect or help collect political funds.</p> <p><input type="radio"/> NO</p> <hr/> <p>60 REQUIRES VOTE BY MAIL IN BIENNIAL PRIMARY, GENERAL ELECTIONS</p> <p>RESULT OF "YES" VOTE: "Yes" vote amends existing law to require vote by mail in biennial primary, general elections.</p> <p><input type="radio"/> YES</p> <p>RESULT OF "NO" VOTE: "No" vote retains current law prohibiting vote by mail in biennial primary or general elections.</p> <p><input type="radio"/> NO</p> <hr/> <p>61 CHANGES MINIMUM SENTENCES FOR LISTED CRIMES, INCLUDING CERTAIN REPEAT OFFENSES</p> <p>RESULT OF "YES" VOTE: "Yes" vote changes minimum sentences for listed crimes, including certain repeat offenses.</p> <p><input type="radio"/> YES</p> <p>RESULT OF "NO" VOTE: "No" vote retains present sentencing statutes and guidelines for listed crimes, including repeat offenses.</p> <p><input type="radio"/> NO</p> <hr/> <p>62 AMENDS CONSTITUTION: REQUIRES CAMPAIGN FINANCE DISCLOSURES; REGULATES SIGNATURE GATHERING; GUARANTEES CONTRIBUTION METHODS</p> <p>RESULT OF "YES" VOTE: "Yes" vote requires additional campaign finance disclosures; regulates signature gathering; guarantees certain contribution methods.</p> <p><input type="radio"/> YES</p> <p>RESULT OF "NO" VOTE: "No" vote rejects requiring additional campaign finance disclosures, regulating signature gathering, guaranteeing certain contribution methods.</p> <p><input type="radio"/> NO</p> <hr/> <p>63 AMENDS CONSTITUTION: MEASURES PROPOSING SUPERMAJORITY VOTING REQUIREMENTS REQUIRE SAME SUPERMAJORITY FOR PASSAGE</p> <p>RESULT OF "YES" VOTE: "Yes" vote allows passage of greater-than-majority voting requirements only by equally large majority.</p> <p><input type="radio"/> YES</p> <p>RESULT OF "NO" VOTE: "No" vote allows simple majority to pass measures that impose greater-than-majority voting requirements.</p> <p><input type="radio"/> NO</p> <hr/> <p>64 PROHIBITS MANY PRESENT TIMBER HARVEST PRACTICES, IMPOSES MORE RESTRICTIVE REGULATIONS</p> <p>RESULT OF "YES" VOTE: "Yes" vote adopts restrictions on timber harvest practices, including federal regulation, allows citizen-suit enforcement.</p> <p><input type="radio"/> YES</p> <p>RESULT OF "NO" VOTE: "No" vote retains current regulations concerning timber harvest practices.</p> <p><input type="radio"/> NO</p>
---	---	--

SAMPLE BALLOT • GENERAL ELECTION BENTON COUNTY, OREGON • NOVEMBER 3, 1998

**ONLY THE APPROPRIATE CANDIDATES AND MEASURES FOR EACH PRECINCT
WILL APPEAR ON THAT PRECINCT'S BALLOT**

65 AMENDS CONSTITUTION: CREATES PROCESS FOR REQUIRING LEGISLATURE TO REVIEW ADMINISTRATIVE RULES

- YES **RESULT OF "YES" VOTE:** "Yes" vote creates process for petitioning legislature to require its review of administrative rules.
- NO

RESULT OF "NO" VOTE: "No" vote keeps system not requiring legislative approval for administrative rules to remain in effect.

66 AMENDS CONSTITUTION: DEDICATES SOME LOTTERY FUNDING TO PARKS, BEACHES; HABITAT, WATERSHED PROTECTION

- YES **RESULT OF "YES" VOTE:** "Yes" vote dedicates 15 percent lottery funding to parks, beaches; salmon, wildlife habitat, watershed protection.
- NO

RESULT OF "NO" VOTE: "No" vote retains system restricting state lottery funding to job creation, economic development, public education.

67 ALLOWS MEDICAL USE OF MARIJUANA WITHIN LIMITS; ESTABLISHES PERMIT SYSTEM

- YES **RESULT OF "YES" VOTE:** "Yes" vote allows medical use of marijuana within specified limits; establishes state-controlled permit system.
- NO

RESULT OF "NO" VOTE: "No" vote retains Oregon criminal, civil forfeiture laws prohibiting possession, delivery and production of marijuana.

BENTON COUNTY

02-58 PUBLIC SAFETY, HEALTH, AND SERVICE MAINTENANCE FIVE-YEAR SERIAL LEVY

- YES **QUESTION:** To maintain current services, shall Benton County levy 35 cents per \$1,000 assessed valuation, outside permanent rate beginning in 1999-2000?
- NO

This measure may cause property taxes to increase more than three percent.

The proposed levy will be in effect for five years.

CITY OF ALBANY

22-65 A MEASURE PROPOSING ANNEXATION OF PROPERTY ADJOINING BROADWAY STREET.

- YES **QUESTION:** Shall the 4.79-acre property adjoining Broadway Street be annexed?
- NO

22-66 A MEASURE PROPOSING ANNEXATION OF PROPERTY ADJOINING GOLDFISH FARM ROAD.

- YES **QUESTION:** Shall the 4.91-acre property adjoining Goldfish Farm Road be annexed?
- NO

22-70 CITY OF ALBANY, AUTHORIZING GENERAL OBLIGATION BONDS FOR STREET RECONSTRUCTION.

- YES **QUESTION:** Shall the City be authorized to issue General Obligation Bonds in an amount not exceeding \$9.85 million for street reconstruction? If the bonds are approved, they will be payable from taxes on property or property ownership that are not subject to the limits of Section 11 or 11b, Article XI of Oregon Constitution.
- NO

CITY OF CORVALLIS

02-65 A MEASURE TO ALLOW SMOKING IN BARS

- YES **QUESTION:** Shall the Corvallis Municipal Code be amended to allow smoking in bars?
- NO

02-68 WILLAMETTE RIVERBANK RESTORATION AND RIVERFRONT PARK GENERAL OBLIGATION BOND MEASURE

- YES **QUESTION:** Shall the City issue \$9.5 million of general obligation bonds to restore the Willamette Riverbank and improve Riverfront Commemorative Park?
- NO

If the bonds are approved, they will be payable from taxes on property or property ownership that are not subject to the limits of sections 11 and 11b, Article XI, of the Oregon Constitution.

02-69 A MEASURE PROPOSING ANNEXATION OF THE SUMMIT CORPORATE PARK PROPERTY

- YES **QUESTION:** Shall the 83 acre Summit Corporate Park industrial property, north of Reservoir Road and west of 53rd Street, be annexed to the City of Corvallis?
- NO

02-70 A MEASURE PROPOSING ANNEXATION OF THE MEADOWLARK PROPERTY

- YES **QUESTION:** Shall the 5.37 acre Meadowlark property, south of SW Country Club Drive, between 45th and 49th Streets be annexed?
- NO

CITY OF PHILOMATH

02-59 A MEASURE PROPOSING ANNEXATION OF 554 NORTH 9TH STREET

- YES **QUESTION:** Shall 554 North 9th Street, 2.00 acres located north of Pioneer Street and west of North 9th Street, be annexed?
- NO

02-60 A MEASURE PROPOSING ANNEXATION OF 458 NORTH 10TH STREET

- YES **QUESTION:** Shall 458 North 10th Street, 5.80 acres located north of North 10th and east of North 9th Street, be annexed?
- NO

02-61 A MEASURE PROPOSING ANNEXATION OF 201 NORTH 20TH PLACE

- YES **QUESTION:** Shall 201 North 20th Place property, 1.46 acres located east of College Street, be annexed?
- NO

02-62 A MEASURE PROPOSING ANNEXATION OF 1020 NORTH 19TH STREET

- YES **QUESTION:** Shall 1020 North 19th Street, 1.81 acres located west of North 19th Street and north of Industrial Way, be annexed?
- NO

02-63 A MEASURE PROPOSING ANNEXATION OF THE NEABECK HILL SUBDIVISION

- YES **QUESTION:** Shall the Neabeck Hill Subdivision, 34.22 acres located south of Main Street and north of the Southwood Subdivision, be annexed?
- NO

02-64 A MEASURE PROPOSING ANNEXATION OF PROPERTY AT 2651 MAIN STREET

- YES **QUESTION:** Shall 2651 Main Street, .66 acres located north of Main Street and northeast of South 26th Street, be annexed?
- NO

02-66 PHILOMATH PARKS OPERATION AND MAINTENANCE FOUR YEAR SERIAL LEVY

- YES **QUESTION:** Shall the City annually tax \$.16372/\$1,000 assessed valuation of real property for four years to provide additional parks maintenance funding?
- NO

SAMPLE BALLOT • GENERAL ELECTION BENTON COUNTY, OREGON • NOVEMBER 3, 1998

**ONLY THE APPROPRIATE CANDIDATES AND MEASURES FOR EACH PRECINCT
WILL APPEAR ON THAT PRECINCT'S BALLOT**

ALSEA SCHOOL DISTRICT NO. 7J

**02-72 ALSEA SCHOOL DISTRICT NO. 7J
GENERAL OBLIGATION BOND AUTHORIZAITON**

YES **QUESTION:** Shall the District be authorized to issue general obligation bonds in an amount not exceeding \$2,745,000? If the bonds are approved, they will be payable from taxes on property or property ownership that are not subject to the limits of sections 11 and 11b, Article XI of the Oregon Constitution.

NO

CENTRAL SCHOOL DISTRICT NO. 13J

**27-34 CENTRAL SCHOOL DISTRICT NO. 13J
GENERAL OBLIGATION BOND AUTHORIZATION**

YES **QUESTION:** Shall the District be authorized to issue general obligation bonds in an amount not exceeding \$12,400,000? If the bonds are approved they will be payable from taxes on property or property ownership that are not subject to the limits of sections 11 and 11b, Article XI of the Oregon Constitution.

NO

**27-35 CENTRAL SCHOOL DISTRICT NO. 13J
GENERAL OBLIGATION BOND AUTHORIZATION**

YES **QUESTION:** Shall the District be authorized to issue general obligation bonds in an amount not exceeding \$1,350,000? If the bonds are approved they will be payable from taxes on property or property ownership that are not subject to the limits of sections 11 and 11b, Article XI of the Oregon Constitution.

NO

CORVALLIS SCHOOL DISTRICT NO. 509J

02-67 GENERAL OBLIGATION BOND AUTHORIZATION

YES **QUESTION:** Shall the District issue general obligation bonds in a principal amount of not more than \$8,240,000? If the bonds are approved, they will be payable from taxes on property or property ownership that are not subject to the limits of Section 11 and 11b, Article XI of the Oregon Constitution.

NO

PHILOMATH SCHOOL DISTRICT NO. 17J

**02-73 PHILOMATH SCHOOL DISTRICT
GENERAL OBLIGATION BOND AUTHORIZATION**

YES **QUESTION:** Shall Philomath School District be authorized to issue general obligation bonds not exceeding \$9,950,000 to expand and improve its facilities? If the bonds are approved, they will be payable from taxes on property or property ownership that are not subject to the limits of sections 11 and 11b, Article XI of the Oregon Constitution.

NO

PALESTINE RURAL FIRE PROTECTION DISTRICT

02-71 A MEASURE PROPOSING A FIVE-YEAR LOCAL OPTION TAX LEVY

YES **QUESTION:** Shall Palestine Rural Fire Protection District impose \$.1758 per \$1000 of assessed value for five years beginning in 1999-2000. This measure may cause property taxes to increase more than three percent.

NO

FULL TEXT OF STATE, COUNTY, CITY AND DISTRICT MEASURES

REFERRED TO THE PEOPLE BY THE LEGISLATIVE ASSEMBLY

54 AMENDS CONSTITUTION: AUTHORIZES STATE TO GUARANTEE BONDED INDEBTEDNESS OF CERTAIN EDUCATION DISTRICTS

RESULT OF "YES" VOTE: "Yes" vote authorizes state to guarantee general obligation bonds issued by certain education districts.

RESULT OF "NO" VOTE: "No" vote retains prohibition against state guarantee of general obligation bonds issued by education districts.

SUMMARY: Constitution now generally prohibits state from creating debt over \$50,000 or lending its credit. Measure amends constitution permitting state to guarantee general obligation bonded indebtedness of school districts, education service districts, community college districts. Limits amount state can guarantee to 1/2 of one percent of true cash value of taxable property in state. State may issue bonds, borrow from Common School Fund to satisfy obligation. Legislature must enact statutes authorizing state to recover from district payments made to satisfy state's guarantee of district debt.

ESTIMATE OF FINANCIAL IMPACT: Reduced interest and issuance costs on indebtedness by participating school districts, education service districts and community college districts are estimated to be \$70 million over the next 20 years under this measure. This estimate is based on current levels of bond issuance. There is no financial effect on state government revenues or expenditures.

55 AMENDS CONSTITUTION: PERMITS STATE TO GUARANTEE EARNINGS ON PREPAID TUITION TRUST FUND

RESULT OF "YES" VOTE: Vote "Yes" to authorize state to guarantee earnings under tuition trust fund program.

RESULT OF "NO" VOTE: Vote "No" to refuse authorization to guarantee earnings under tuition trust fund program.

SUMMARY: Amends Constitution. Measure approval makes effective the Post-secondary Education Expense Program adopted by 1997 Legislature. Program allows payment of undergraduate tuition before enrollment at lower than highest prevailing rate at time of enrollment; establishes trust fund. Measure permits state to exceed constitutional debt limit to authorize indebtedness at 1/2 of one percent of true cash value of all property in state to guarantee minimum benefits on contributions to prepaid tuition trust fund. State may issue bonds; may borrow from Common School Fund, if necessary.

ESTIMATE OF FINANCIAL IMPACT: It is estimated that this measure will require approximately \$1,200,000 in total start up costs, in state funds, over the first four years of its operation.

56 EXPANDS NOTICE TO LANDOWNERS REGARDING CHANGES TO LAND USE LAWS

RESULT OF "YES" VOTE: "Yes" vote requires governments to mail notice to landowners regarding changes to land use laws.

RESULT OF "NO" VOTE: "No" vote retains current notice requirements, which do not require mailed notice to landowners.

SUMMARY: Requires counties and cities to mail notices to landowners regarding changes to state, local, or metropolitan service district land use laws and regulations that limit or prohibit uses currently allowed on the landowners' property. Requires state government to reimburse counties and cities for costs of mailing notice resulting from changes to state statutes or administrative rules. Requires metropolitan service districts to reimburse counties and cities for costs of mailing notice resulting from changes in district land use regulations. Prescribes form of each notice.

ESTIMATE OF FINANCIAL IMPACT: State government expenditures are estimated to be \$2,040,000 annually in notice costs. Local government expenditures, including those of the Metropolitan Service District, are estimated to be \$1,547,000 a year.

This estimate is based on 7,000 land use actions per year, of which 3,900 would require some notice under this measure. Actual expenditures may vary based on such variables as the total number of land use actions, the number of actions included in each notice and the costs per notice.

SAMPLE BALLOT • GENERAL ELECTION BENTON COUNTY, OREGON • NOVEMBER 3, 1998

**ONLY THE APPROPRIATE CANDIDATES AND MEASURES FOR EACH PRECINCT
WILL APPEAR ON THAT PRECINCT'S BALLOT**

REFERRED TO THE PEOPLE BY REFERENDUM PETITION	PROPOSED BY INITIATIVE PETITION	60 REQUIRES VOTE BY MAIL IN BIENNIAL PRIMARY, GENERAL ELECTIONS
<p>57 MAKES POSSESSION OF LIMITED AMOUNT OF MARIJUANA CLASS C MISDEMEANOR</p> <p>RESULT OF "YES" VOTE: "Yes" vote makes possession of less than one ounce of marijuana a Class C misdemeanor.</p> <p>RESULT OF "NO" VOTE: "No" vote retains statute making possession of less than one ounce of marijuana a violation.</p> <p>SUMMARY: Under current Oregon law, possession of less than one ounce of marijuana is a violation, punishable by 500 to 1000 dollar fine; charges against first-time offenders may be dismissed upon completion of marijuana diversion agreement. Measure makes possession of less than one ounce of marijuana a Class C misdemeanor, punishable by up to 30 days imprisonment, plus 500 to 1000 dollar fine. Measure also makes failure to complete diversion agreement ground for six-month suspension of offender's driving privileges. Allocates \$600,000 for enforcement.</p> <p>ESTIMATE OF FINANCIAL IMPACT: Direct state expenditures for law enforcement, indigent defense, court operation, and jury payments are estimated at \$586,000 annually. A one-time cost of \$50,000 would be required for Driver and Motor Vehicle Services computer programming. State expenditures could increase or decrease depending on the number of cases prosecuted, the number of individuals entering diversion agreements, and the number of defendants eligible for court-appointed counsel.</p> <p>Direct county expenditures for local jail beds are estimated at \$229,000 annually. Local expenditures could increase or decrease depending on the length of sentences imposed by the courts, population management decisions of jail commanders, and management of offenders on probation or post-release supervision.</p> <p>State fine revenues are estimated to be reduced by \$638,000 annually.</p> <p>Major assumptions for these estimates include:</p> <ul style="list-style-type: none"> • 6,000 arrests per year. • 50 percent of arrests will be prosecuted as misdemeanors, 40 percent will be prosecuted as violations, and 10 percent will result in a diversion agreement. • 50 percent of all arrests will result in an average of one day of county jail time. • 54 percent of arrests prosecuted as violations and 40 percent of arrests prosecuted as misdemeanors will result in convictions. • The minimum fine of \$500 will be assessed for all misdemeanor convictions and maximum fine of \$250 will be assessed for all violations convictions. • 40 percent of fines assessed for misdemeanor convictions and 78 percent of fines assessed for violation convictions will be collected. 	<p>58 REQUIRES ISSUING COPY OF ORIGINAL OREGON BIRTH CERTIFICATE TO ADOPTEES</p> <p>RESULT OF "YES" VOTE: "Yes" vote requires issuing copy of original Oregon birth certificate to adult adoptees upon request.</p> <p>RESULT OF "NO" VOTE: "No" vote retains confidentiality of original Oregon birth certificate of adoptees unless court orders disclosure.</p> <p>SUMMARY: Current Oregon law provides that upon decree of adoption, a new birth certificate generally will be substituted for the original birth certificate, and the original certificate showing birth parent information will not be subject to inspection, unless a court orders disclosure. Measure would require state registrar to issue certified copy of original birth certificate to any Oregon born adopted person 21 years old or older. Establishes same procedures, filing fees and waiting periods for obtaining birth certificate copies for adopted persons as for non-adopted persons.</p> <p>ESTIMATE OF FINANCIAL IMPACT: No financial effect on state or local government expenditures or revenues.</p> <hr/> <p>59 AMENDS CONSTITUTION: PROHIBITS USING PUBLIC RESOURCES TO COLLECT MONEY FOR POLITICAL PURPOSES</p> <p>RESULT OF "YES" VOTE: "Yes" vote prohibits using public resources to collect or help collect political funds.</p> <p>RESULT OF "NO" VOTE: "No" vote rejects prohibition on using public resources to collect or help collect political funds.</p> <p>SUMMARY: Amends constitution. Prohibits using "public funds" to collect or assist in collecting "political funds." "Public funds" defined to include public employee time, public property or equipment and supplies. "Political funds" defined to include any expenditure supporting or opposing a candidate, ballot measure or initiative petition. Prohibition applies even if public entities are reimbursed for use of public funds for collection. Measure would prohibit public employee payroll deduction for any entity that uses any funds deducted for political purposes or that commingles political and non-political funds.</p> <p>ESTIMATE OF FINANCIAL IMPACT: This measure is estimated to reduce state expenditures for voters' pamphlet publication by \$1,800,000 in the year 2000 and in subsequent even-numbered years. State revenues from filing fees are estimated to decrease by \$400,000 in the year 2000 and in subsequent even-numbered years.</p> <p>These reductions result from eliminating candidates' statements and measure arguments in the State Voters' Pamphlet.</p> <p>The measure will have no financial effect on local government expenditures or revenues.</p>	<p>RESULT OF "YES" VOTE: "Yes" vote amends existing law to require vote by mail in biennial primary, general elections.</p> <p>RESULT OF "NO" VOTE: "No" vote retains current law prohibiting vote by mail in biennial primary or general elections.</p> <p>SUMMARY: Current law prohibits vote by mail for biennial primary or general elections. This proposal eliminates the prohibition and requires vote by mail for biennial primary or general elections. The proposal does not affect existing law permitting the Secretary of State and county clerk to conduct other elections either at the polls or by mail.</p> <p>ESTIMATE OF FINANCIAL IMPACT: County government expenditures are estimated to be reduced each Primary and General Election year by \$3,021,709.</p>

SAMPLE BALLOT • GENERAL ELECTION

BENTON COUNTY, OREGON • NOVEMBER 3, 1998

**ONLY THE APPROPRIATE CANDIDATES AND MEASURES FOR EACH PRECINCT
WILL APPEAR ON THAT PRECINCT'S BALLOT**

61 CHANGES MINIMUM SENTENCES FOR LISTED CRIMES, INCLUDING CERTAIN REPEAT OFFENSES

RESULT OF "YES" VOTE: "Yes" vote changes minimum sentences for listed crimes, including certain repeat offenses.

RESULT OF "NO" VOTE: "No" vote retains present sentencing statutes and guidelines for listed crimes, including repeat offenses.

SUMMARY: Establishes minimum sentences for crimes listed as "major crimes." Provides one to three year proportionally increased sentences for major crimes, aggravated murder or murder if person has one to three prior convictions for major crime within past 10 years. Prior juvenile court adjudications involving major crimes apply to increase sentence. Treats prior conviction for driving under influence of intoxicants as major crime if current conviction is for criminally negligent homicide using vehicle. Prohibits temporary leave or other reduction in additional prison time imposed under measure.

ESTIMATE OF FINANCIAL IMPACT: The mandatory and presumptive sentences imposed under this measure are estimated to require 4,300 new prison beds by 2006, with direct state expenditures for prison construction and start-up of \$470 million by 2006.

Direct state expenditures for prison operating costs and debt service are estimated at \$21 million in 1999-2000 and \$40 million in 2000-2001, growing to \$125 million in 2005-2006. Community corrections payments from the state to counties for probation and post-prison supervision are estimated to be reduced by \$800,000 in 1999-2000, \$1.9 million in 2000-2001, and \$1.4 million in 2005-2006.

Under this measure, direct state expenditures for court operations are estimated at \$100,000 in 1998-1999 and \$175,000 in each of the next two years. State expenditures for indigent defense are estimated at \$350,000 in 1998-1999 and \$900,000 in each of the next two years.

Major factors affecting this estimate include:

- Plea bargaining practices of prosecuting attorneys;
- Prior criminal history of offenders;
- Sentencing practices of judges;
- Numbers of arrests; and
- Type of prison bed, minimum or medium security.

62 AMENDS CONSTITUTION: REQUIRES CAMPAIGN FINANCE DISCLOSURES; REGULATES SIGNATURE GATHERING; GUARANTEES CONTRIBUTION METHODS

RESULT OF "YES" VOTE: "Yes" vote requires additional campaign finance disclosures; regulates signature gathering; guarantees certain contribution methods.

RESULT OF "NO" VOTE: "No" vote rejects requiring additional campaign finance disclosures, regulating signature gathering, guaranteeing certain contribution methods.

SUMMARY: Amends constitution. Existing statutes require disclosing certain campaign finances. Measure adds constitutional requirements for prompter disclosure of contributions \$500 or more; more frequent disclosure of contributions/expenditures for referendum/initiative petitions. Requires disclosing entity authorizing/paying for political advertising. Legislature may regulate, prohibit paying signature gatherers if it finds practice has caused fraud, other abuses. Guarantees individuals' right to make campaign contributions using certain methods. Secretary of State must promptly publish finance reports. Prohibits payments for signing/not signing petitions. Specifies penalties. Other provisions.

ESTIMATE OF FINANCIAL IMPACT: This measure is estimated to increase state expenditures by \$248,000 a year, with an additional one-time-only start up cost to the state of \$104,000. Expenditures by county and city elections filing officers cannot be calculated, due to insufficient data.

63 AMENDS CONSTITUTION: MEASURES PROPOSING SUPERMAJORITY VOTING REQUIREMENTS REQUIRE SAME SUPERMAJORITY FOR PASSAGE

RESULT OF "YES" VOTE: "Yes" vote allows passage of greater-than-majority voting requirements only by equally large majority.

RESULT OF "NO" VOTE: "No" vote allows simple majority to pass measures that impose greater-than-majority voting requirements.

SUMMARY: Amends constitution. Measures including a requirement for more than a majority of votes cast by the electorate to approve any change in law or government action would become effective only if approved by at least the same percentage of voters specified in that proposed voting requirement. For example, a measure imposing a 2/3 majority voting requirement to change law would require a 2/3 majority to pass. Applies to initiated, referred measures presented to voters on or after November 3, 1998, including measures on same ballot.

ESTIMATE OF FINANCIAL IMPACT: No financial effect on state or local government expenditures or revenues.

64 PROHIBITS MANY PRESENT TIMBER HARVEST PRACTICES. IMPOSES MORE RESTRICTIVE REGULATIONS

RESULT OF "YES" VOTE: "Yes" vote adopts restrictions on timber harvest practices, including federal regulation, allows citizen-suit enforcement.

RESULT OF "NO" VOTE: "No" vote retains current regulations concerning timber harvest practices.

SUMMARY: Prohibits many present timber harvest practices, chemical herbicides, pesticides in forest. Limits size of trees that can be harvested. Covers private, state, federal forestlands. Imposes new harvest regulations including federal regulation by classifying forestland waters as "navigable." State Board of Forestry must adopt new timber harvest methods and regulations to meet new requirements. Requires state to submit new forestland water quality plan to federal Environmental Protection Agency, seek approval before permitting logging. Authorizes citizens suits to enforce new harvest restrictions or other provisions of measure.

ESTIMATE OF FINANCIAL IMPACT: State revenues are estimated to decrease \$25,000,000 per year. This estimate assumes a 60% harvest reduction in western Oregon and a 65% harvest reduction in eastern Oregon. These estimated decreases apply to private, local and state lands.

Current state expenditures are estimated to decrease by \$25,000,000 because of the revenue loss. Major annual state expenditure reductions would occur in forest management, fire protection, and regulation, timber tax revenue and administration, and Common School Fund forest land management.

Also, added regulations required by this measure would increase the need for ongoing state government expenditures above current requirements by \$5,000,000 per year. One-time state expenditures of \$1,400,000 would be required.

Revenues to schools are estimated to decrease by \$33,200,000 a year. County and special district revenues are estimated to decrease by \$7,800,000 per year.

Revenues that contribute to the Common School Fund will be reduced by \$8,700,000 primarily due to an estimated 84% decrease in harvest on Common School Fund Trust lands. This, in turn, will mean reduced earnings on the Common School Fund principal for distribution to schools.

SAMPLE BALLOT • GENERAL ELECTION BENTON COUNTY, OREGON • NOVEMBER 3, 1998

**ONLY THE APPROPRIATE CANDIDATES AND MEASURES FOR EACH PRECINCT
WILL APPEAR ON THAT PRECINCT'S BALLOT**

**65 AMENDS CONSTITUTION: CREATES
PROCESS FOR REQUIRING
LEGISLATURE TO REVIEW
ADMINISTRATIVE RULES**

RESULT OF "YES" VOTE: "Yes" vote creates process for petitioning legislature to require its review of administrative rules.

RESULT OF "NO" VOTE: "No" vote keeps system not requiring legislative approval for administrative rules to remain in effect.

SUMMARY: Amends constitution. Current law does not require legislative review of administrative rules. Measure allows voters to require legislative review of administrative rules at next regular session when petition, signed by specified number of voters, is filed listing affected rules. Rule remains effective until reviewed by legislature, but rule ceases to be in effect unless approved. If governor vetoes bill, rule is disapproved unless legislature overrides veto. If rule is not approved, state agency may adopt new rule on same issue, but legislative review is required.

ESTIMATE OF FINANCIAL IMPACT: No financial effect on state or local government expenditures or revenues.

**66 AMENDS CONSTITUTION: DEDICATES
SOME LOTTERY FUNDING TO PARKS,
BEACHES; HABITAT, WATERSHED
PROTECTION**

RESULT OF "YES" VOTE: "Yes" vote dedicates 15 percent lottery funding to parks, beaches; salmon, wildlife habitat, watershed protection.

RESULT OF "NO" VOTE: "No" vote retains system restricting state lottery funding to job creation, economic development, public education.

SUMMARY: Amends constitution. State lottery proceeds currently limited to job creation, economic development, public education. Measure dedicates 15 percent of net lottery proceeds to new fund for parks, beaches; salmon, wildlife habitat, watershed protection. Dedicates half of fund to create, maintain state parks, ocean shores, public beach access areas, historic sites, recreation areas. Dedicates other half for single agency to administer funds to protect native salmon, wildlife habitat, watersheds, using at least 65 percent for capital expenditures. Requires biennial audits, voter renewal in 2014. Other provisions.

ESTIMATE OF FINANCIAL IMPACT: An estimated \$46.2 million of state lottery proceeds will be directed each year to parks and natural resources until the year 2014, when there is an automatic revote. Currently the Oregon legislature allocates those funds to a variety of programs including, but not limited to, education, economic and community development, natural resources and transportation. This estimate is based on 1999-2001 projections of lottery proceeds.

**67 ALLOWS MEDICAL USE OF
MARIJUANA WITHIN LIMITS;
ESTABLISHES PERMIT SYSTEM**

RESULT OF "YES" VOTE: "Yes" vote allows medical use of marijuana within specified limits; establishes state-controlled permit system.

RESULT OF "NO" VOTE: "No" vote retains Oregon criminal, civil forfeiture laws prohibiting possession, delivery and production of marijuana.

SUMMARY: Oregon statutes currently prohibit possession, delivery, production of marijuana. Measure allows engaging in, assisting medical use of marijuana, within specified limits.

Requires medical use be necessary to mitigate symptoms, effects of debilitating medical condition, including cancer, glaucoma, AIDS, HIV, multiple sclerosis, others. Establishes state permit system requiring physician's written proof. Within specified limitations, exempts permit holder or applicant from marijuana criminal statutes; authorizes criminal charge defense for medical use without permit.

Limits amounts of usable marijuana, number of plants that may be possessed. Other provisions.

ESTIMATE OF FINANCIAL IMPACT: Direct annual state expenditures are estimated at \$147,000, based on the assumption that 500 applicants will register with the Oregon Health Division per year. Some or all of these costs may be offset by fees to be established by the Health Division as provided in the measure.

BENTON COUNTY

**02-58 PUBLIC SAFETY, HEALTH, AND
SERVICE MAINTENANCE FIVE-YEAR SERIAL
LEVY**

QUESTION: To maintain current services, shall Benton County levy 35 cents per \$1,000 assessed valuation, outside permanent rate beginning in 1999-2000?

This measure may cause property taxes to increase more than three percent.

The proposed levy will be in effect for five years.

SUMMARY: Passage of this levy will allow the county to continue to provide critical services.

Due to limitations imposed by statewide Ballot Measures 47 and 50, if this levy fails the county will be required to reduce current services by approximately \$1.0 million.

Two-thirds of the revenue generated from this levy will be used to maintain current services. One-third will be used to create and expand programs that address critical needs identified in recent studies, including:

- A Criminal Offender Control Program to reduce crimes committed by chronic adult and juvenile offenders;
- A team of social service and law enforcement specialists to reduce juvenile delinquency and child abuse;
- Expanded community policing to assist neighborhoods and rural communities in preventing and solving crimes and promoting public safety;
- Expanded alcohol and drug prevention and mental health services.

If the levy is not approved, essential county services will be reduced. Staff reductions will result in fewer services in public safety, public health, land-use planning, parks, and other county departments.

Levy cost estimate is 35 cents per \$1,000 assessed value per year. A home with \$150,000 of assessed value would pay an additional \$4.38 per month or \$53 per year as a result of this levy.

This levy, which maintains essential services and adds critical public health and safety services, is estimated to provide, \$1.57 million in 1999-2000, \$1.65 million in 2000-2001, \$1.73 million in 2001-2002, \$1.82 million in 2002-2003, and \$1.91 million in 2003-2004.

SAMPLE BALLOT • GENERAL ELECTION BENTON COUNTY, OREGON • NOVEMBER 3, 1998

**ONLY THE APPROPRIATE CANDIDATES AND MEASURES FOR EACH PRECINCT
WILL APPEAR ON THAT PRECINCT'S BALLOT**

CITY OF ALBANY

22-65 A MEASURE PROPOSING ANNEXATION OF PROPERTY ADJOINING BROADWAY STREET.

QUESTION: Shall the 4.79-acre property adjoining Broadway Street be annexed?

SUMMARY: Approval of this measure would annex approximately 4.79 acres to the City of Albany. The property to be annexed is south of Queen Avenue SW and north of 27th Avenue SW. Upon annexation, the property would be zoned RS-6.5 (Single Family Residential).

22-66 A MEASURE PROPOSING ANNEXATION OF PROPERTY ADJOINING GOLDFISH FARM ROAD.

QUESTION: Shall the 4.91-acre property adjoining Goldfish Farm Road be annexed?

SUMMARY: Approval of this measure would annex approximately 4.91 acres to the City of Albany. The property to be annexed is north of Santiam Highway SE and south of Knox Butte Road SE. Upon annexation, the property would be zoned CC (Community Commercial).

22-70 CITY OF ALBANY, AUTHORIZING GENERAL OBLIGATION BONDS FOR STREET RECONSTRUCTION.

QUESTION: Shall the City be authorized to issue General Obligation Bonds in an amount not exceeding \$9.85 million for street reconstruction? If the bonds are approved, they will be payable from taxes on property or property ownership that are not subject to the limits of Section 11 or 11b, Article XI of Oregon Constitution.

SUMMARY: Approval of this measure would provide funds to the City to finance the costs of capital construction and capital improvements, including, but not limited to:

Reconstruct the following streets:

- Santiam Road - East of Main Street to Cleveland Street;
- 34th Avenue - Marion Street to Waverly Drive;
- Elm Street - Queen Avenue to Fifth Avenue;
- Salem Avenue - Waverly Drive to Albany/ Millersburg city limits; and

Pay bond issuance costs.

The bonds will mature in 20 years or less.

CITY OF CORVALLIS

02-65 A MEASURE TO ALLOW SMOKING IN BARS

QUESTION: Shall the Corvallis Municipal Code be amended to allow smoking in bars?

SUMMARY: A measure to amend Corvallis Municipal Code Sections 5.03.080.160.02 and 5.03.080.160.05 2). This measure would amend the Municipal Code so that bars would be exempt from a prohibition against smoking in public places. The measure would also amend the Municipal Code so that bars would not become subject to City regulations restricting smoking.

02-68 WILLAMETTE RIVERBANK RESTORATION AND RIVERFRONT PARK GENERAL OBLIGATION BOND MEASURE

QUESTION: Shall the City issue \$9.5 million of general obligation bonds to restore the Willamette Riverbank and improve Riverfront Commemorative Park?

If the bonds are approved, they will be payable from taxes on property or property ownership that are not subject to the limits of sections 11 and 11b, Article XI, of the Oregon Constitution.

SUMMARY: The \$9.5 million of bonds, plus up to \$3.6 million in grants and other funds, will finance improvements to the Willamette Riverbank and Riverfront Park consistent with City Council approved master plans. Riverbank restoration includes west bank Willamette River repairs from Western Boulevard through Van Buren Avenue, including repair of slide areas, re-vegetation, and providing riparian and aquatic habitat. The repairs will protect against future erosion and slides. The Riverfront Park design elements include the park corridor from Shawala Park to Tyler Avenue, a bicycle/pedestrian path, plazas, overlooks, information signage and artwork, park furnishings and amenities (such as benches, restrooms, and fountains), sidewalks, street improvements, surface parking, street furnishings and amenities (such as lighting, benches, and crosswalks) in the Riverfront and First Street area which includes parking and circulation improvements between First and Second Streets and on Western and "B" Avenue from Second to Fifth. The estimated maximum tax rate for the bonds is 31.47¢ per \$1,000 of assessed value. The taxes to repay this debt are exempt from Ballot Measures 5 and 50 limits.

02-69 A MEASURE PROPOSING ANNEXATION OF THE SUMMIT CORPORATE PARK PROPERTY

QUESTION: Shall the 83 acre Summit Corporate Park industrial property, north of Reservoir Road and west of 53rd Street, be annexed to the City of Corvallis?

SUMMARY: Approval of this measure would annex approximately 83 acres to the City of Corvallis. The property to be annexed is north of Reservoir Road and west of 53rd Street, is partially developed with an existing wood products mill, and lies entirely within Benton County. Upon annexation, the property would be zoned I1, Intensive Industrial, with a PD, Planned Development overlay.

02-70 A MEASURE PROPOSING ANNEXATION OF THE MEADOWLARK PROPERTY

QUESTION: Shall the 5.37 acre Meadowlark property, south of SW Country Club Drive, between 45th and 49th Streets be annexed?

SUMMARY: Approval of this measure would annex approximately 5.37 acres (5.31 acres of vacant land with 0.06 acres of County-owned right-of-way for SW Country Club Drive) to the City of Corvallis. The property to be annexed is south of Country Club Drive, between SW 45th and SW 49th Streets, and lies entirely within Benton County. Upon annexation, the property would be zoned RS-6, Low Density Residential.

CITY OF PHILOMATH

02-59 A MEASURE PROPOSING ANNEXATION OF 554 NORTH 9TH STREET

QUESTION: Shall 554 North 9th Street, 2.00 acres located north of Pioneer Street and west of North 9th Street, be annexed?

SUMMARY: Approval of this measure would annex approximately 2.00 acres of land zoned Low Density Residential to the City of Philomath. The property to be annexed is generally north of Pioneer Street and west of North 9th Street. The parcel lies entirely within Benton County. The City currently supplies water services to the property. The owner has consented to annexation. This property contains a single family residence.

02-60 A MEASURE PROPOSING ANNEXATION OF 458 NORTH 10TH STREET

QUESTION: Shall 458 North 10th Street, 5.80 acres located north of North 10th and east of North 9th Street, be annexed?

SUMMARY: Approval of this measure would annex approximately 5.80 acres of land zoned Low Density Residential to the City of Philomath. The property to be annexed is generally east of North 9th Street and north of the terminus of North 10th Street. The parcel lies entirely within Benton County. The City currently supplies water services to the property. The owner has consented to annexation. This property contains a single family residence.

SAMPLE BALLOT • GENERAL ELECTION BENTON COUNTY, OREGON • NOVEMBER 3, 1998

**ONLY THE APPROPRIATE CANDIDATES AND MEASURES FOR EACH PRECINCT
WILL APPEAR ON THAT PRECINCT'S BALLOT**

**02-61 A MEASURE PROPOSING ANNEXATION
OF 201 NORTH 20TH PLACE**

QUESTION: Shall the 201 North 20th Place property, 1.46 acres located east of College Street, be annexed?

SUMMARY: Approval of this measure would annex approximately 1.46 acres of land zoned Commercial to the City of Philomath. The property to be annexed is generally east of College Street. The parcel lies entirely within Benton County. The City currently supplies water and sewer services to the property. The owner has consented to annexation. This property contains a single family residence.

**02-62 A MEASURE PROPOSING ANNEXATION
OF 1020 NORTH 19TH STREET**

QUESTION: Shall 1020 North 19th Street, 1.81 acres located west of North 19th Street and north of Industrial Way, be annexed?

SUMMARY: Approval of this measure would annex approximately 1.81 acres of land zoned Light Industrial to the City of Philomath. The property to be annexed is generally west of North 19th Street and north of Industrial Way. The parcel lies entirely within Benton County. The City currently supplies water and sewer services to the property. The owner has consented to annexation. This property contains a manufacturing facility.

**02-63 A MEASURE PROPOSING ANNEXATION
OF THE NEABECK HILL SUBDIVISION**

QUESTION: Shall the Neabeck Hill Subdivision, 34.22 acres located south of Main Street and north of the Southwood Subdivision, be annexed?

SUMMARY: Approval of this measure would annex approximately 34.22 acres of land zoned Low Density Residential to the City of Philomath. The property to be annexed is generally south of Main Street and north of the Southwood Subdivision. The parcel lies entirely within Benton County. The City currently supplies water and sewer services to the property. The owner has consented to annexation. This property is under development as a residential subdivision.

**02-64 A MEASURE PROPOSING ANNEXATION
OF PROPERTY AT 2651 MAIN STREET**

QUESTION: Shall 2651 Main Street, .66 acres located north of Main Street and northeast of South 26th Street, be annexed?

SUMMARY: Approval of this measure would annex approximately .66 acres of land zoned Industrial Park to the City of Philomath. The property to be annexed is generally north of Main Street and northeast of South 26th Street. The parcel lies entirely within Benton County. The City currently supplies no utility services to the property. The owner has consented to annexation. This property is developed with a cabinet manufacturing business.

**02-66 PHILOMATH PARKS OPERATION AND
MAINTENANCE FOUR YEAR SERIAL LEVY**

QUESTION: Shall the City annually tax \$.16372/\$1,000 assessed valuation of real property for four years to provide additional parks maintenance funding?

STATEMENTS: This measure may cause property taxes to increase more than three percent. This measure will last for four years.

SUMMARY: The annual collection of property taxes at the rate of \$.16372/\$1,000 assessed valuation will provide \$20,000 each year for four years to fund increased operation and maintenance activities associated with the adoption of the Parks Master Plan. The Philomath Parks Operation and Maintenance Serial Levy was a recommendation from the citizens Parks Master Plan Advisory Committee. The purpose of the levy is to supplement funding for existing park operations and maintenance as well as future parks to be developed under the Parks Master Plan. In addition to the requested levy, the Parks Master Plan Advisory Committee recommended that System Development Charges for new development be increased, and that the City commit to provide at least \$35,000 for parks operation and maintenance through its annual budget for each year that the levy is in effect. The taxes imposed by this serial option levy to fund the parks operation and maintenance activities are exempt from Ballot Measures 5 and 50 limits.

ALSEA SCHOOL DISTRICT NO. 7J

**02-72 ALSEA SCHOOL DISTRICT NO. 7J
GENERAL OBLIGATION BOND
AUTHORIZATION**

QUESTION: Shall the District be authorized to issue general obligation bonds in an amount not exceeding \$2,745,000? If the bonds are approved, they will be payable from taxes on property or property ownership that are not subject to the limits of sections 11 and 11b, Article XI of the Oregon Constitution.

SUMMARY: If approved, this measure provides funds to the District to finance the costs of capital construction and capital improvements, including, but not limited to, providing funds to:

- Make site improvements to existing school facilities;
- Construct and furnish a 22,890 square foot gymnasium addition, including locker rooms, storage spaces, public restrooms, teaching stations for physical education and sports activities, a new media center, and a science classroom suite; and
- Pay bond issuance costs.

The Bonds will mature in 30 years or less.

CENTRAL SCHOOL DISTRICT NO. 13J

**27-34 CENTRAL SCHOOL DISTRICT NO. 13J
GENERAL OBLIGATION BOND
AUTHORIZATION**

QUESTION: Shall the District be authorized to issue general obligation bonds in an amount not exceeding \$12,400,000? If the bonds are approved they will be payable from taxes on property or property ownership that are not subject to the limits of sections 11 and 11b, Article XI of the Oregon Constitution.

SUMMARY: If approved, bond funds would be used to:

- Construct and furnish a new District School in Monmouth;
- Build and furnish 4 additional classrooms at the high school, and acquire gymnasium bleachers, finish team rooms, and remodel physical education dressing rooms;
- Upgrade the heating and ventilating systems at Monmouth Elementary, and Independence Elementary Schools;
- Upgrade playgrounds at Independence and Henry Hill Elementary Schools;
- Upgrade gym floors at Monmouth, Independence, and Henry Hill Elementary Schools;
- Remodel and improve student commons and make improvements to meet ADA requirements at Talmadge Middle School;
- Acquire and furnish modular classrooms and upgrade septic system at Oak Grove School;
- Remodel and improve the basement of Eola Alternative School; and
- Pay issuance cost, and other bond costs.

The bonds will mature in 20 years or less.

**27-35 CENTRAL SCHOOL DISTRICT NO. 13J
GENERAL OBLIGATION BOND
AUTHORIZATION**

QUESTION: Shall the District be authorized to issue general obligation bonds in an amount not exceeding \$1,350,000? If the bonds are approved they will be payable from taxes on property or property ownership that are not subject to the limits of sections 11 and 11b, Article XI of the Oregon Constitution.

SUMMARY: If approved, bond funds would be used to:

- Construct a new connecting road from Hoffman Road in Monmouth to 16th Street near Talmadge Middle School to give access to the new District School to be constructed in Monmouth. The proceeds will be used to pay for road improvements such as culverts or bridges, other than the road itself. The connecting road will meet all requirements for a city street in Monmouth, which includes sidewalks and lighting.
- Pay issuance cost, and other bond costs.

The bonds will mature in 20 years or less.

**SAMPLE BALLOT • GENERAL ELECTION
BENTON COUNTY, OREGON • NOVEMBER 3, 1998**

**ONLY THE APPROPRIATE CANDIDATES AND MEASURES FOR EACH PRECINCT
WILL APPEAR ON THAT PRECINCT'S BALLOT**

CORVALLIS SCHOOL DISTRICT NO. 509J

**02-67 GENERAL OBLIGATION BOND
AUTHORIZATION**

QUESTION: Shall the District issue general obligation bonds in a principal amount of not more than \$8,240,000? If the bonds are approved, they will be payable from taxes on property or property ownership that are not subject to the limits of Section 11 and 11b, Article XI of the Oregon Constitution.

SUMMARY: This measure, if approved, would authorize the District to issue general obligation bonds in an amount not to exceed \$8,240,000. Bond proceeds would be used to finance aquatic facilities, including improvements to the Osborne Aquatic Center and other costs of capital construction and improvements. The bonds would mature over a period of not to exceed fifteen years from their date of issuance.

PHILOMATH SCHOOL DISTRICT NO. 17J

**02-73 PHILOMATH SCHOOL DISTRICT
GENERAL OBLIGATION BOND
AUTHORIZATION**

QUESTION: Shall Philomath School District be authorized to issue general obligation bonds not exceeding \$9,950,000 to expand and improve its facilities? If the bonds are approved, they will be payable from taxes on property or property ownership that are not subject to the limits of sections 11 and 11b, Article XI of the Oregon Constitution.

SUMMARY: If approved, the measure provides funds to:

- meet increased enrollment demands with additional classrooms, acquire land and construct, equip and furnish a new elementary school for approximately 325 students;
- high school renovations to include replace the heating and ventilation system and windows, remodel locker rooms and restrooms to conform to handicap standards, address safety issues, renovate existing kitchen, regrade and expand parking;
- middle school renovations to include construct and equip a covered, exterior physical education area and additional locker rooms and restrooms, replace science lab plumbing, expand and improve space for student services and expand parking;
- improve heating and insulation for community rooms at Blodgett and Kings Valley Schools; and
- provide safer bus pickup and delivery areas at District schools and correct drainage at high school and middle school athletic fields.

The bonds will mature over a period not exceeding 20 years from the date of issuance and may be issued in one or more series.

**PALESTINE RURAL FIRE
PROTECTION DISTRICT**

**02-71 A MEASURE PROPOSING A FIVE-YEAR
LOCAL OPTION TAX LEVY**

QUESTION: Shall Palestine Rural Fire Protection District impose \$.1758 per \$1000 of assessed value for five years beginning in 1999-2000. This measure may cause property taxes to increase more than three percent.

SUMMARY: There has been a significant increase in the fire protection contract with the City of Albany that is not provided for from the permanent rate limit tax of \$1.2498 per \$1000 of assessed value. Therefore, it is necessary to request a five-year local option operating tax of \$.1758 per \$1000 of assessed value to finance the operation of the District for the next five fiscal years beginning in 1999-2000.

VOTING INSTRUCTIONS

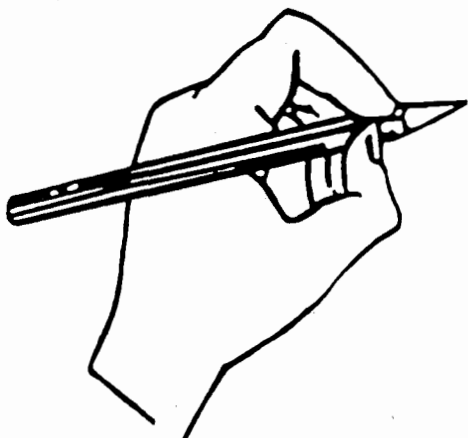
At the General Election of 1998 the voters of Benton County will cast their votes on the ballot illustrated below. This page has been inserted into the Voters' Pamphlet as an aid for using this ballot.

WHEN VOTING YOUR BALLOT AT THE POLLING PLACE:

1. USE ONLY THE PENCIL PROVIDED OR #2 PENCIL IF VOTING ABSENTEE.
2. TO VOTE YOU MUST BLACKEN THE OVAL (●) COMPLETELY!

EXAMPLE

PRESIDENT (VOTE FOR ONE)



- JOHN ALLEN DOE
- THOMAS JEFFERSON
- J.Q. PUBLIC

3. TO WRITE-IN A NAME — YOU MUST BLACKEN THE OVAL (●) AND WRITE-IN THE NAME ON THE DOTTED LINE, WHERE APPLICABLE.
4. DO NOT CROSS OUT — IF YOU CHANGE YOUR MIND, EXCHANGE YOUR BALLOT FOR A NEW ONE.
5. AFTER VOTING — INSERT BALLOT IN THE BALLOT BOX. DO NOT FOLD THE BALLOT.

REMEMBER TO VOTE BOTH SIDES OF YOUR BALLOT!

Benton County VOTERS' PAMPHLET

General Election November 3, 1998

Polls Open 7:00 A.M. to 8:00 P.M.

"The will of the people is the only legitimate foundation of any government, and to protect its free expression should be our first object."

Thomas Jefferson

PUBLISHED BY THE
BENTON COUNTY BOARD OF COMMISSIONERS



Election Questions?

**Call
Benton County
Elections Division
757-6756
(TTY/TDD 757-5646)**