

May 15, 2001 Ballot Measures

Following are the Questions and Summaries appearing on the May 15, 2001 ballot. Click on a ballot measure to see it's information. There are also maps of each area in question.

City of Philomath

[Measure 02-05](#): Annexation of TreeSource Industries Property

City of Corvallis

[Measure 02-06](#): Annexation of the Parkland Village Property

[Measure 02-07](#): Annexation of the Voss Property

City of Philomath

Measure 02-05

Annexation of the TreeSource Industries Property

QUESTION: Shall the TreeSource Industries property, approximately 42 acres located at 2351 Main Street and 617 N. 19th Street, be annexed?

SUMMARY: Approval of this measure would annex approximately 42 acres of land zoned Industrial to the city of Philomath. Upon annexation to the City, the property would be zoned Industrial Park. The property to be annexed is generally located at 2351 Main Street and 617 N. 19th Street. The parcels lie entirely within Benton County. TreeSource Industries has stated it plans to sell the property so that it may be redeveloped in accordance with the City's Industrial Park standards. The City does not currently supply any utility services to the property.

[View the map.](#)

City of Corvallis

Measure 02-06

Annexation of the Parkland Village Property

QUESTION: Shall the 101.6-acre Parkland Village property, north of Harrison Boulevard and west of 35th Street, be annexed?

SUMMARY: Approval of this measure would annex approximately 101.6 acres to the City of Corvallis. The property to be annexed is north of Harrison Boulevard and west of 35th Street, and lies entirely within Benton County. Upon annexation, the property would be zoned PD (RS-6) (Low Density Residential with a Planned Development Overlay).

[View the map.](#)

City of Corvallis

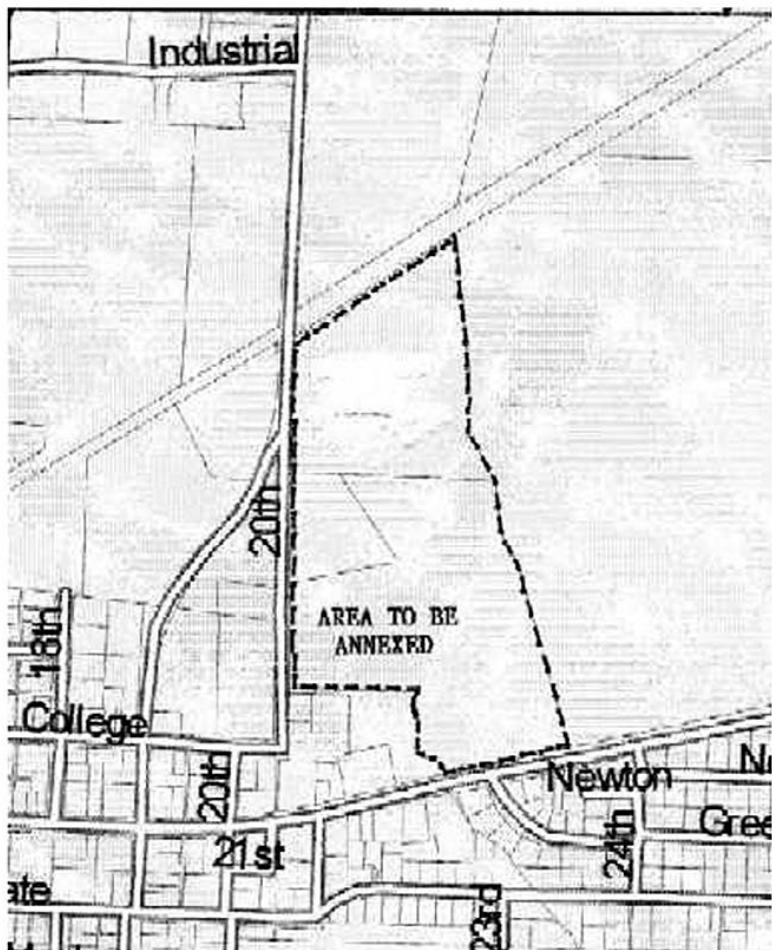
Measure 02-07 Annexation of the Voss Property

QUESTION: Shall the 5 acre Voss property, south of the intersection of SW Brooklane Drive and 45th Street, be annexed?

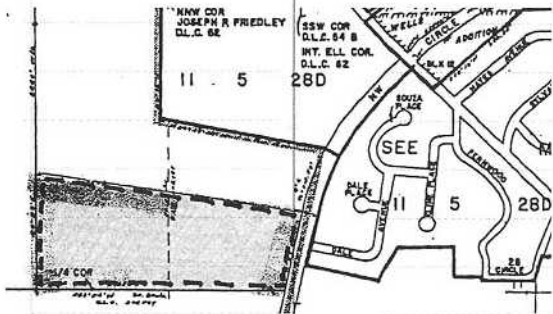
SUMMARY: Approval of this measure would annex approximately 5 acres to the City of Corvallis. The property to be annexed is south of the intersection of SW Brooklane Drive and 45th Street, and lies entirely within Benton County. Upon annexation, the property would be zoned RS-3.5 (Low Density Residential).

[View the map.](#)

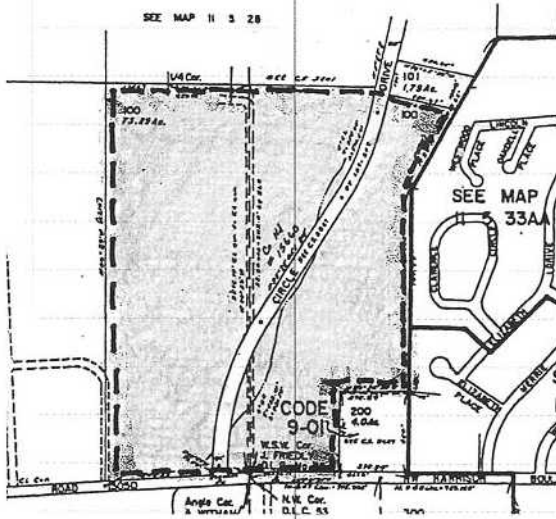
Map for 02-05



MAP FOR 02-06 PART 1



MAP FOR 02-06 PART 2



MAP FOR 02-07

12 5 90
B INDEX
CORVALLIS

REV: 07-12-2004

CANC

301

302

