

# BENTON COUNTY VOTERS' PAMPHLET



## SPECIAL ELECTION NOVEMBER 4, 2003

PUBLISHED BY THE  
BENTON COUNTY  
BOARD OF COMMISSIONERS

Please RECYCLE this pamphlet with your newspapers



**BOARD OF COMMISSIONERS**

408 SW Monroe Ave., Suite 111  
P.O. Box 3020  
Corvallis, OR 97339-3020  
(541) 766-6800  
FAX (541) 766-6893

Dear Benton County Voter:

On November 4, 2003, an election will be held in Benton County. As a voter, you will have an opportunity to exercise your right to vote on important issues within the County.

For this election, the Board of Commissioners publishes this **Benton County Voters' Pamphlet** to provide information concerning countywide and local issues.

Please remember that all ballots, whether mailed or delivered, must be **received no later than 8:00 p.m. on November 4, 2003.** Ballots should be mailed or delivered to:

- The Benton County Elections Office, located in the basement of the historic Courthouse at 120 NW 4<sup>th</sup> Street in Corvallis

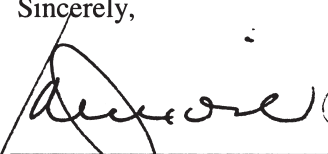

**OR**

- One of the official ballot drop sites located throughout the County. A list of ballot drop site locations is included in this Voters' Pamphlet.

This Voters' Pamphlet contains summaries, explanatory statements, and any paid arguments favoring or opposing those measures. You will also find information on voting, registering to vote, updating your voter registration, and applying for absentee ballots.

We hope this Voters' Pamphlet will help you to become better informed about the issues in this election as you prepare to make your decisions.

Sincerely,

  
\_\_\_\_\_  
Jay Dixon  
Chair  
\_\_\_\_\_  
Linda Modrell  
Commissioner  
\_\_\_\_\_  
Annabelle Jaramillo  
Commissioner

**REMEMBER TO VOTE**

# **TABLE OF CONTENTS**

Letter from the Benton County Commissioners .....	2
<hr/>	
<b>Measure 02-39</b> <b>Correct Grammatical Errors and Delete Obsolete Provisions of County Charter</b>	
Ballot Title & Explanatory Statement .....	4
<hr/>	
<b>Measure 02-40</b> <b>Change the Meeting Frequency of the Charter Review Committee</b>	
Ballot Title & Explanatory Statement .....	4
<hr/>	
<b>Measure 02-41</b> <b>Appointment of County Assessor</b>	
Ballot Title & Explanatory Statement .....	5
<hr/>	
<b>Measure 02-37</b> <b>Annexation of the Thompson Property</b>	
Ballot Title, Explanatory Statement & Map .....	6
<hr/>	
<b>Measure 02-38</b> <b>Annexation of the Train Property</b>	
Ballot Title, Explanatory Statement & Map .....	7
<hr/>	
<b>City of Corvallis</b> <b>City Councilor, Position 4</b>	
Jackson Cassady .....	8
Melissa White .....	8
<hr/>	
Instructions to voters on voting .....	9
Frequently Asked Elections Questions .....	10
List of Official Drop Sites .....	11
Absentee Application Form .....	11

# BENTON COUNTY

## Measure No. 02-39

## Measure No. 02-40

### BALLOT TITLE

CORRECT GRAMMATICAL ERRORS AND DELETE OBSOLETE PROVISIONS OF COUNTY CHARTER

**QUESTION:** Shall the Benton County Charter be changed to correct errors in grammar and style and to delete obsolete provisions?

**SUMMARY:** This measure would correct grammatical errors and stylistic confusion in the Benton County Charter as set forth in ordinance nos. 2003-0189 and 2003-0191. In addition, obsolete Charter sections relating to changes at the time the Charter was adopted would be deleted. The 2001 Charter Review Committee recommended these changes.

### EXPLANATORY STATEMENT

This measure has been placed on the ballot on the recommendation of a five-member citizen group appointed by the Benton County Board of Commissioners to review the Charter. This measure would result in the following changes:

- A. Grammar, punctuation and style:
  1. Correct misspelling in Chapter IV, Section 16(1) (e): "amd" to "and";
  2. Correct style of Chapter IV, Section 19(2). The first three subparagraphs - (a), (b) and (c) - would be combined into one paragraph and the remaining subparagraphs (a) and (b) would be renumbered (i) and (ii);
  3. Modify the style and clarify the process of filling vacancies in Chapter V, Section 22. Paragraphs (1), (2) and (3) would be retitled "Appointed", "Temporary Vacancies" and "Permanent Vacancies in the Office of the Sheriff or Assessor," respectively, to more accurately describe the specific process set forth under each paragraph. Subparagraphs (2)(a) and (2)(b) would be combined into one, unnumbered paragraph. The final two sentences of subparagraph (3)(b) would be relocated to renumbered subparagraph (3)(a)(B); and
  4. Changes to Sections 16, 19 and 22 would be ineffective as to the assessor in the event voters approve changing the assessor position from elected to appointed as set forth in ballot measure 02-41. In that event, Sections 16, 19 and 22, as they relate to the assessor, shall be modified as provided in the voter-approved ordinances making the office of assessor an appointed position.
- B. Delete Chapter VIII, Sections 29 and 30, which have become obsolete. These sections specified how elected positions would continue at the time the Charter was adopted. Because that transition period occurred nearly 30 years ago, these provisions are no longer applicable.

*(Submitted by Vance M. Croney, Benton County Counsel)*

NO ARGUMENTS FOR OR AGAINST THIS MEASURE WERE FILED.

### BALLOT TITLE

CHANGE THE MEETING FREQUENCY OF THE CHARTER REVIEW COMMITTEE

**QUESTION:** Shall the County Charter be amended to change the meeting frequency of the Charter Review Committee to every five years?

**SUMMARY:** The Benton County Charter currently calls for the Board of Commissioners to appoint a Charter Review Committee every two years. This measure would change the meeting frequency of the Charter Review Committee to every five years, or more often if needed as set forth in ordinance nos. 2003-0192 and 2003-0193. These changes have been recommended by the 2001 Charter Review Committee.

### EXPLANATORY STATEMENT

This measure has been placed on the ballot on the recommendation of a five-member citizen group appointed by the Benton County Board of Commissioners to review the Charter. This measure would result in the following change:

Technical change to Chapter VII, Section 28(6) would increase the number of years from two to five between each mandatory appointment of the Charter Review Committee. The Board of Commissioners would retain the authority to appoint such a committee at an earlier time if necessary. Experience since 1972 has shown that convening the Charter Review Committee every two years is unnecessary and leads to repetitive review of issues.

*(Submitted by Vance M. Croney, Benton County Counsel)*

NO ARGUMENTS FOR OR AGAINST THIS MEASURE WERE FILED.

# BENTON COUNTY

## Measure No. 02-41

### BALLOT TITLE

APPOINTMENT OF COUNTY ASSESSOR

**QUESTION:** Shall the Charter be changed to allow the Board of Commissioners to appoint the County Assessor?

**SUMMARY:** The Benton County Charter provides that the position of Assessor is filled by election. This measure would change that position to an appointment made by the Board of Commissioners as set forth in ordinance nos. 2003-0188 and 2003-0190. This position would then be filled in the same way as all County department heads, except the Sheriff.

### EXPLANATORY STATEMENT

This measure has been placed on the ballot by the Board of Commissioners. As it reads now, the County Charter calls for the position of Assessor to be filled by a vote of the people.

The Assessor is a department head in the County. All other County department heads, except the Sheriff, are appointed.

The reason for placing this measure on the ballot at this time is full recognition of how complex the duties of the Assessor have become over the last decade. State legislation has established rigid criteria the Assessor's position must meet. The Assessor must perform the job as set out in state law. The Oregon Department of Revenue is required to conduct extensive oversight of the assessment function to ensure that the technical aspects of the job are done correctly. The Board of Commissioners cannot direct management performance of an elected Assessor. If the Assessor is appointed, the Board can require both technical and management experience of all candidates.

Persons running for election currently must possess state appraisal certifications and must meet residential qualifications at the time they file for candidacy which do not fully address the job skills necessary to do the job. The Benton County Assessor is responsible for management of a \$1.6 million budget and supervision of a staff of 19. The position is responsible for maintaining property records and setting the value of 33,000 accounts. It oversees the calculation of taxes and the extension of taxes on to the tax roll which in 2002 imposed taxes of \$72 million on behalf of more than 50 cities, school districts, fire, road and other taxing districts within Benton County.

The potential pool of candidates for an elected Assessor is limited to a handful of individuals. An appointed position would increase the potential pool of candidates who can obtain the necessary certifications and also possess appropriate management and technical skills.

To ensure the integrity of the assessment and valuation process and provide a safeguard for an appointed Assessor, this charter amendment would give the Assessor the ability to refer all Commissioner inquiries, directives and disagreements to the Department of Revenue for review and/or resolution.

*(Submitted by Vance M. Croney, Benton County Counsel)*

**NO ARGUMENTS FOR OR AGAINST  
THIS MEASURE WERE FILED.**

# CITY OF CORVALLIS

## Measure No. 02-37

### BALLOT TITLE

MEASURE PROPOSING ANNEXATION OF THE THOMPSON PROPERTY

**QUESTION:** Shall the 0.88-acre Thompson property, located on the south side of Park Avenue, be annexed?

**SUMMARY:** Approval of this measure would annex approximately 0.88 acres to the City of Corvallis. The property to be annexed is located on the south side of SE Park Avenue between the intersections with SE Crystal Lake Drive and SE Goodpark Street. The property is proposed to be zoned RS-6 (Low Density Residential).

### EXPLANATORY STATEMENT

The 0.91-acre area proposed for annexation is generally located on the south side of SE Park Avenue between the intersections with SE Crystal Lake Drive and SE Goodpark Avenue. The property is nearly surrounded by properties within the Corvallis City Limits. The Comprehensive Plan Map designation for the site is Low Density Residential, which permits development at 2-6 units per acre. Upon annexation, the District (Zoning ) Designation would be RS-6 (Low Density Residential).

Annexation requests are required to include a drawing to illustrate how the site could be developed. The applicant's drawing depicts the retention of the existing single family dwelling on the property and the creation of two additional parcels which could be developed with single family homes. Based on standards in the Land Development Code, from one to four dwellings could be developed on the property under RS-6 zoning. A Minor Land Partition or Subdivision would have to be approved prior to additional development on the property. Any such development would have to be consistent with Land Development Code requirements regarding housing types, setbacks, and other review criteria.

With the exception of a large deciduous tree, the sight is devoid of significant natural features. Soil classifications show that a portion of the site contains hydric soils, which may be an indicator of the presence of wetlands. A wetland determination would be required prior to development on the site. This project was analyzed for compatibility impacts and public service impacts, including potential traffic and utility impacts. Analysis included consistency with the City's compatibility criteria and the City's adopted Master Plans for items such as transportation, parks, trails, sewer, water, and storm drainage.

The eventual need to annex and develop this land was originally identified in 1980 when the Corvallis Urban Growth Boundary was established. This need was reaffirmed in 1998, with acknowledgment of the City's Comprehensive Plan update. Water, sewer, and storm drainage services are available near the site, and are adequately sized to serve potential development on the site. Some additional public facility and service improvements would need to be constructed with future development of this site to satisfy Land Development Code Chapter 4.0 criteria. City ordinances specify that developers will be responsible for on-site and off-site costs associated with street and utility improvements needed for land development projects.

The City Council found the annexation request to be consistent with the policies of the Comprehensive Plan and other City and State policies and standards. Citizens are encouraged to become informed about the annexation request. Full copies of the project's

staff reports and Planning Commission and City Council hearing minutes are available at the Corvallis-Benton County Public Library (645 Monroe Avenue) and at the Community Development Department at City Hall (501 Madison Avenue, 766-6908), e-mail: [planning@ci.corvallis.or.us](mailto:planning@ci.corvallis.or.us)



(Submitted by the City of Corvallis)

**NO ARGUMENTS FOR OR AGAINST THIS MEASURE WERE FILED.**

# CITY OF CORVALLIS

## Measure No. 02-38

### BALLOT TITLE

#### MEASURE PROPOSING ANNEXATION OF THE TRAIN PROPERTY

**QUESTION:** Shall the 0.62-acre site (consisting of the 0.41 acre Train property located on the southeast corner of SW Beals Avenue and SW Country Club Drive and the abutting 0.21 acre Beals Avenue right-of-way), be annexed?

**SUMMARY:** Approval of this measure would annex approximately 0.62 acres to the City of Corvallis. The 0.41 acre Train property and 0.21 acre right-of-way is located on the southeast corner of SW Beals Avenue and SW Country Club Drive. The property is proposed to be zoned RS-6 (Low Density Residential).

### EXPLANATORY STATEMENT

The 0.62-acre area proposed for annexation is generally located at the southeast corner of SW Beals Avenue and SW Country Club Drive. The property abuts the City Limits which runs along the south side of Country Club Drive. The Comprehensive Plan Map designation for the site is Low Density Residential, which permits development at 2-6 units per acre. Upon annexation, the District (Zoning) Designation would be RS-6 (Low Density Residential).

Annexation requests are required to include a drawing to illustrate how the site could be developed. The applicant's drawing depicts the site as divided into two lots for future development of two single family detached dwellings. Based on the City's RS-6 zoning standards, the site could be divided into three lots. The applicant has requested approval of a Minor Land Partition for two lots. The Planning Commission approved, with conditions, the two lot Minor Land Partition request contingent upon voter approval of the Annexation.

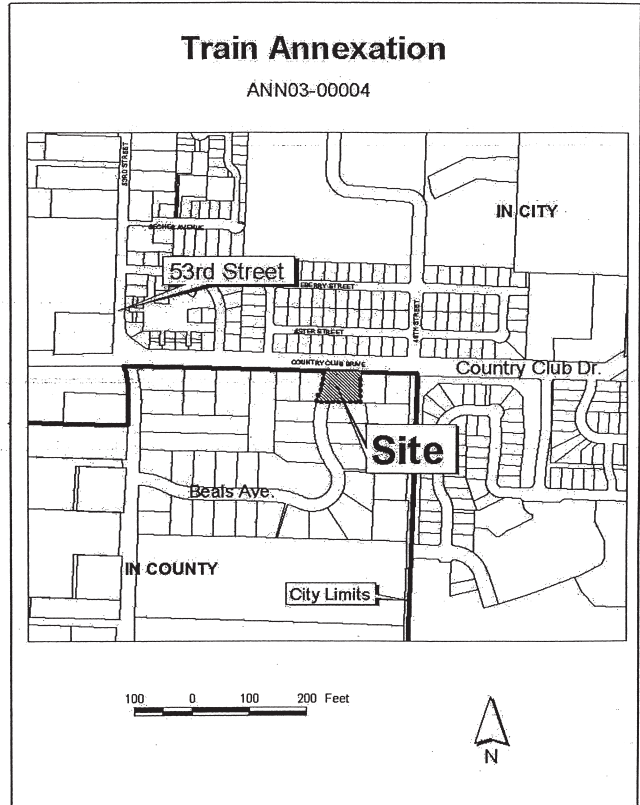
Significant trees or other natural features were not discovered on the site. Soil classifications show that a portion of the site contains hydric soils, which may be an indicator of the presence of wetlands. A wetland determination would be required prior to development on the site. This project was analyzed for compatibility impacts, including potential traffic and utility impacts. The analysis included determining consistency with the City's compatibility review criteria and with adopted Master Plans for items such as transportation, parks, trails, sewer, water, and storm drainage.

The eventual need to annex and develop this land was originally identified in 1980 when the Corvallis Urban Growth Boundary was established. This need was reaffirmed in 1998, with acknowledgement of the City's Comprehensive Plan update. Water, sewer, and storm drainage sources are available near the site, and are adequately sized to serve potential development on the site. Some additional public facility improvements would need to be constructed with future development of this site to satisfy Land Development Code Chapter 4.0 criteria. Requirements would include improving the abutting portions of Country Club Drive and SW Beals Avenue and extending sewer facilities to the site. Water, sewer, and storm drainage facilities would also be extended along SW Beals Avenue to the south edge of the site. City ordinances specify that developers will be responsible for on-site and off-site costs associated with street and utility improvements needed for land development projects.

The City Council found the annexation request to be consistent with the policies of the Comprehensive Plan and other City and State policies and standards. Citizens are encouraged to become

informed about the annexation request. Full copies of the project's staff reports and Planning Commission and City Council hearing minutes are available at the Corvallis-Benton County Public Library (645 Monroe Avenue) and at the Community Development Department at City Hall (501 Madison Avenue, 766-6908), e-mail: [planning@ci.corvallis.or.us](mailto:planning@ci.corvallis.or.us).

02-38



(Submitted by the City of Corvallis)

**NO ARGUMENTS FOR OR AGAINST THIS MEASURE WERE FILED.**

# CITY OF CORVALLIS

**Corvallis City Council  
Ward 4**



**JACKSON  
CASSADY**

**OCCUPATION:** Instructional Design and Training Associate, Ecampus, Oregon State University - Corvallis, Oregon.

**OCCUPATIONAL BACKGROUND:** Instructional Designer, IBT Technologies - Austin, Texas; Instructional Designer, TrainUtopia - Austin, Texas; Education Specialist, Education Service Center Region XIII - Austin, Texas; History Teacher, Westwood High School - Austin, Texas; Bilingual Teacher, Campbell Elementary - Austin, Texas.

**EDUCATIONAL BACKGROUND:** University of Texas at Austin; B.A. Spanish, Minor History.

**PRIOR GOVERNMENTAL EXPERIENCE:** None.

Corvallis owes its unique and beautiful character to the passionate, talented, and dynamic members of its community. Without the continued efforts of these dedicated residents our city would be unable to preserve, let alone enhance, the livability we enjoy. Our ability to thrive in the face of constant change requires consistent and active participation on all fronts. Our families, our schools, our businesses, and our future as a vital city depend on our ability to turn complacency into commitment, competition into partnership, and ideas into action. We cannot rely on outside entities to dictate our fate and define our quality of life. Nor can we afford to assume our interests will be protected unless we make the effort.

Like many, I live in Corvallis because it is Corvallis. I am here for my seven-year-old son. I am here for the established character of the community. I am here for the creative energy of its citizens. I am here for the opportunity to realize our potential. I cannot take these things for granted. I must do my part to keep Corvallis a city we can all celebrate.

*(This information furnished by Jackson Cassady)*

**Corvallis City Council  
Ward 4**



**MELISSA  
WHITE**

**OCCUPATION:** Legislative Assistant, Kelley Wirth, State Representative, District 16, Benton County; Vice President - Legislative, Oregon National Organization for Women

**OCCUPATIONAL BACKGROUND:** Environmental Protection Agency, National Pesticide Information Center; Associated Students of Oregon State University; Norm Thompson Outfitters; Children's World Learning Centers

**EDUCATIONAL BACKGROUND:** Oregon State University, Pursuing Bachelor of Science: General Agriculture, Minor: Natural Resource and Environmental Law and Policy, Mt. Hood Community College, Major: AgriBusiness

**PRIOR GOVERNMENTAL EXPERIENCE:** Precinct Committee Person; Vice President, Associated Students of Oregon State University; United States Student Association Board Member

Dear Neighbor:

"The recent midterm vacancy of the Ward 4 Corvallis City Council seat calls for someone who already has the skills and relationships to hit the ground running. My experience in the state legislature, the community and on the OSU campus will provide Ward 4 with the qualities needed to join a council already in progress."

Melissa White shares the values and passions of our community and is also:

- An experienced campus leader who understands the student perspective
- An advocate for safe and affordable housing
- An academic who has studied agriculture, natural resource, land use, and environmental law and policy
- A third generation Oregonian who believes in economic diversity and vitality
- A staff member of Oregon's 72nd Legislative Assembly, who has the experience and relationships to respond to the personal needs of our community.
- The 2002 JoAnn Trow Woman of Distinction Award
- A believer in the our community's livability and environmental sustainability
- An experienced citizen lobbyist who has worked in Washington, D.C. and Salem, Oregon
- The 2003 Frances Dancy Hooks Coalition Builder Award
- A believer in the City of Corvallis' philosophy "Celebrate Diversity"

Learn more at <http://home.comcast.net/~melissaforcitycouncil>

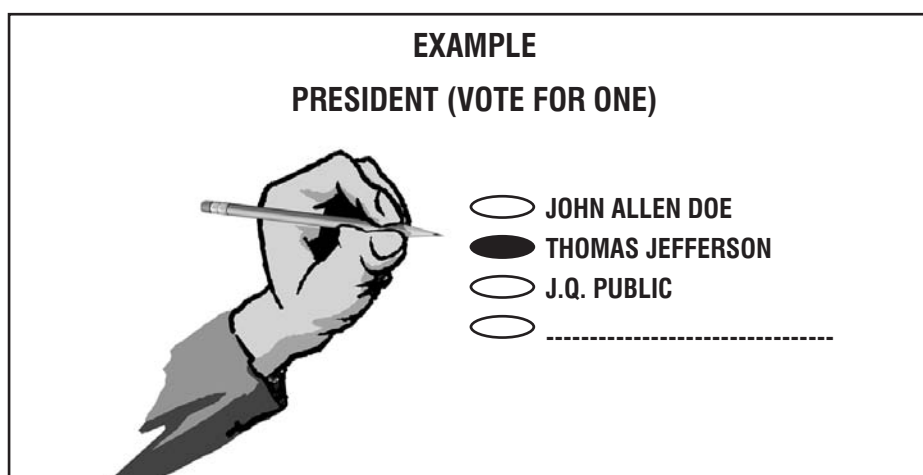
Melissa White is an experienced advocate who will address the concerns and work to achieve the long term goals and concerns of our community. Vote for Melissa White, your powerful voice for the future of Ward 4

*(This information furnished by Melissa P. White)*



# VOTING INSTRUCTIONS

1. TO VOTE YOU MUST USE A PENCIL TO BLACKEN THE OVAL (●) TO THE LEFT OF THE CANDIDATE OR RESPONSE OF YOUR CHOICE.
2. TO WRITE-IN A NAME — BLACKEN THE OVAL (●) TO THE LEFT OF THE DOTTED LINE AND WRITE-IN THE NAME ON THE DOTTED LINE.



## WHO MAY REGISTER TO VOTE?

Anyone who is:

- ◆ A resident of Oregon;
- ◆ A United States citizen; and
- ◆ 18 years of age or older.

You may register to vote before your 18<sup>th</sup> birthday or before you are sworn in as a US citizen. In order to register under these conditions, you must turn 18 or be sworn in as a US citizen during the 20-day period immediately before the election. Please call your county elections officer for details if you believe you qualify for this registration process.

## DO I HAVE TO REGISTER BY PARTY?

No. If you do not want to be affiliated with a political party, you may check the box that states *Not a member of a party*. You may not designate or change a party affiliation after the 21<sup>st</sup> day before the primary election.

## I WILL BE OUT OF TOWN WHEN BALLOTS ARE MAILED. HOW DO I GET A BALLOT?

Absentee ballots are available 45 days before the election. You may request an early absentee ballot from your county election official either in person, by mail, or by fax. You will need to include your name, signature, residence, address and, if different, your mailing address.

## WHAT IF MY BALLOT DOESN'T COME?

If you have not received your ballot within a week after they are mailed, call your county election office. They will check that your voter registration is current. If it is, they will mail you a replacement ballot.

## WHAT IF I HAVE MOVED AND HAVE NOT UPDATED MY REGISTRATION?

If you are registered to vote by the 21<sup>st</sup> day before the election but now have a different address and:

- ◆ You have moved within the same county, contact the county election office. They will instruct you on the process to follow to qualify for a replacement ballot.
- OR
- ◆ You have moved to a different county, go to the election office in your new county.

## WHAT IS A PRIMARY ELECTION?

- ◆ Major political parties (Democratic & Republican) nominate their candidates at a primary election, which is held on the third Tuesday in May of each even-numbered year. Only a voter who is registered as a member of either political party may vote for that party's candidates at the primary election unless the party opens its primary to voters registered as *Not a member of a party*. If this is the case, voters who are *Not a member of a party* must request major party ballots from their county election office.
- ◆ All nonpartisan offices (i.e. judges and district attorneys) are also on the primary election ballot. Any registered voter may vote for those candidates, regardless of the voter's political party affiliation.

## FREQUENTLY ASKED QUESTIONS ABOUT VOTER REGISTRATION

### Q. Am I qualified to vote in Oregon?

- A. Yes, if you are a resident of Oregon, will be a United States citizen and 18 years old by the next election date, **AND** you register to vote 21 days before the next election.

### Q. How do I go about registering to vote?

- A. Fill out an Oregon Voters' Registration Card and send, or bring, it to any County Clerk's Office. Registration cards can be found at most public buildings, the DMV, or on the web at: [www.sos.state.or.us](http://www.sos.state.or.us)

### Q. What do I list as my residence?

- A. You are required to register to vote at the address where you are living.

**Remember:** It is illegal to forward a ballot to anyone, if you will be leaving the area for a while, be sure to ask for an absentee ballot in writing. Give your Benton County address, where you wish the ballot to be sent, how long to continue sending ballots there, and sign and print your name. Your signature is our permission to send your ballot somewhere other than where you are registered.

### Q. What happens when I move?

- A. You must always re-register or update your registration. If you are new to Benton County, list your old county or state address in the "Previous Registration" section so your name can be taken off the old county's records.

### Q. Must I fill out a party affiliation?

- A. Yes and no. One section instructs you to choose a party. It also has a box for "Not a member of a party" which you may choose. The only time parties are important is during the May Primary Election, which is held on even numbered years.

Oregon's Primary Election allows major political parties (Republican and Democrat) to pick their slate of candidates for the coming November General Election. If you are not a member of either of those parties, the only issues you will vote on in the Primary are measures and non-affiliated candidates. Republicans will receive a ballot with measures, non-affiliated candidates and Republican candidates. Democrats will receive a ballot with measures, non-affiliated candidates and Democratic candidates. Major party candidates nominated in the May Primary will go on to the November General Election, when you can vote for anyone, regardless of what party he, she, or you are in.

## FREQUENTLY ASKED QUESTIONS ABOUT VOTING

### Q. I didn't get a ballot and can't remember if I registered after I moved.

- A. Call the elections office, you might be able to update your registration and take part in this election.

### Q. What do I do when ballots for someone else are delivered to our home?

- A. It is important that you **DO NOT THROW OUT THE BALLOT**. Write on the envelope that the person is no longer at that address and **PUT IT BACK INTO THE MAIL**. Postage is not needed. Once our office has received the undeliverable ballot we will inactivate the voter and you will stop receiving them.

### Q. If I mark my ballot in pen will it still count?

- A. Go over the pen marks with pencil so the tally machine can read your responses.

### Q. I opened my envelope to put it in the secrecy ballot. Will you still count it?

- A. After you re-seal your ballot, write along the portion that you opened, "Opened by voter", and sign your name. Once we determine you opened the ballot, it can be counted.

### Q. How do you know I am the one who voted my ballot?

- A. **EACH BALLOT** signature is checked. Elections staff compare the signature on the ballot to the signature on the voter's registration card. If the signatures do not match, we contact the voter to resolve the issue.

Remember: Even a person with a Power of Attorney cannot sign your ballot. Only the voter can.

## FOR OTHER QUESTIONS NOT COVERED HERE

The Benton County Elections Office is located in the basement of the historic County Courthouse, Room 13, in downtown Corvallis. We will be glad to address any questions you may have. Always feel comfortable calling or dropping by to see us with your questions.

Website:	<a href="http://www.co.benton.or.us/elections">www.co.benton.or.us/elections</a>
Office Phone:	541 766-6756
Office Fax:	541 766-6757
Office Email:	<a href="mailto:bcelections@co.benton.or.us">bcelections@co.benton.or.us</a>

# ABSENTEE APPLICATION



BENTON COUNTY ELECTIONS DIVISION  
120 NW 4<sup>TH</sup> ST RM 13  
CORVALLIS, OR 97330  
Tel: (541)766-6756 Fax: (541)766-6757  
Website: [www.co.benton.or.us/elections](http://www.co.benton.or.us/elections)  
E-mail: [bcelections@co.benton.or.us](mailto:bcelections@co.benton.or.us)

## ABSENTEE BALLOT APPLICATION

Please select the category(ies) that applies(y) to you:

- Military     Overseas     Snowbird     Student     Other

I am applying for an absentee ballot for:

- This election only \_\_\_\_\_ (mth/day/yr)  
 All future elections until \_\_\_\_\_ (mth/day/yr)  
 I will be away from \_\_\_\_\_ (mth/day) till \_\_\_\_\_ (mth/day) yearly  
I will be in Benton County from \_\_\_\_\_ (mth/day) till \_\_\_\_\_ (mth/day) yearly  
This will continue to happen until \_\_\_\_\_ (mth/day/yr)

Name (Last, First, Middle)	Date of Birth
----------------------------	---------------

Absentee Address Line 1
-------------------------

Absentee Address Line 2 (if needed)
-------------------------------------

City, State, Zip / COUNTRY
----------------------------

Benton County Residential Address
-----------------------------------

City, State, Zip
------------------

Signature:	Date:
------------	-------

Note: An original signature is required.

PLEASE PRINT

**ELECTION QUESTIONS?**  
**WEB PAGE - [www.co.benton.or.us/elections](http://www.co.benton.or.us/elections)**  
**Email - [bcelections@co.benton.or.us](mailto:bcelections@co.benton.or.us)**  
**Office Phone: 541-766-6756**  
**Office Fax: 541 766-6757**

## BENTON COUNTY ELECTIONS BALLOT DROP SITES

### TWO 24 HOUR DRIVE UP BALLOT DROP BOXES IN CORVALLIS:

**Wells Fargo Bank in Timberhill  
Shopping Center at 2543 Kings Ave. &  
the Courthouse at 180 NW 5<sup>th</sup> Street**

### CITY OF ADAIR COMMUNITY CENTER

6030 NE William R. Carr Ave. - Adair Village  
Mon. thru Fri. 8:00 AM to 5:00 PM\*  
745-5507

### CORVALLIS PUBLIC LIBRARY

645 NW Monroe Ave - Corvallis  
Mon. thru Th. 10:00AM to 9:00 PM  
Fri. & Sat. 10:00AM to 6:00 PM  
Sun. 2:00 PM to 6:00 PM  
757-6926

### JOHN BOY'S ALSEA MERCANTILE STORE

186 Main Steet, Alsea  
Mon - Sat 6:00 AM - 9:00 PM  
Sun 7:00 AM - 8:00 PM  
487-4462

### MONROE CITY HALL

664 Commercial St. - Monroe  
Mon. thru Fri. 8:00 AM to 5:00 PM\*  
847-5175

### O.S.U. MEMORIAL STUDENT UNION

Mon. thru Thus. 7:00 AM to 11:00 PM  
Fri. 7:00 AM to 12:00 MIDNIGHT  
Sat. 7:30 AM to 12:00 MIDNIGHT  
Sun. 10:30 AM to 11:00 PM  
(When college is in session)  
737-2416

### NORTH ALBANY MIDDLE SCHOOL

815 Thornton Lake DR NW - Albany  
Mon. thru Fri. 7:00 AM to 4:00 PM\*  
967-4541

### PHILOMATH PUBLIC LIBRARY

1050 Applegate - Philomath  
Mon., Thus. Fri. & Sat. 10:00 AM to 5:00 PM  
Tues., Wed. 10:00 AM to 8:00 PM  
929-3016

### SENIOR CITIZENS CENTER

2601 NW Tyler Ave - Corvallis  
Mon. thru Fri. 8:00 AM to 4:00 PM\*  
766-6959

### BENTON COUNTY ELECTIONS DIVISION

Basement, County Courthouse  
120 NW 4<sup>th</sup> St. - Corvallis  
Mon. thru Fri. 8:00 AM to 5:00 PM\*  
766-6756

\*All ballot sites open until 8 PM Election Day

# **Benton County VOTERS' PAMPHLET**

## **Election November 4, 2003**

“The only sure bulwark of continuing liberty is a government strong enough to protect the interests of the people, and a people strong enough and well enough informed to maintain its sovereign control over its government.”

*– Franklin Delano Roosevelt*

PUBLISHED BY THE  
BENTON COUNTY BOARD OF COMMISSIONERS



## **Election Questions?**

**Call**

**Benton County**

**Elections Division**

**766-6756 (TTY/TDD 766-6080)**

**Fax 766-6757**

**e-mail: [bcelections@co.benton.or.us](mailto:bcelections@co.benton.or.us)**