

BENTON COUNTY VOTERS' PAMPHLET



SPECIAL ELECTION SEPTEMBER 16, 2003

PUBLISHED BY THE
BENTON COUNTY
BOARD OF COMMISSIONERS

Please RECYCLE this pamphlet with your newspapers



BOARD OF COMMISSIONERS

408 SW Monroe Ave., Suite 111

P.O. Box 3020

Corvallis, OR 97339-3020

(541) 766-6800

FAX (541) 766-6893

Dear Benton County Voter:

On September 16, 2003, an election will be held in Benton County. As a voter, you will have an opportunity to exercise your right to vote on important issues for the County.

For this election, the Board of Commissioners publishes this **Benton County Voters' Pamphlet** to provide information concerning countywide and local issues. Benton County is seeking renewal of two levies. Also on the ballot is a citizens' income tax initiative for school funding.

Please remember that all ballots, whether mailed or delivered, must be **received no later than 8:00 p.m. on September 16, 2003.** Ballots should be mailed or delivered to:

- The Benton County Elections Office, located in the basement of the historic Courthouse at 120 NW 4th Street in Corvallis

OR

- One of the official ballot drop sites located throughout the County. A list of ballot drop site locations is included in this Voters' Pamphlet.

This Voters' Pamphlet contains the text of the measures, with explanatory statements, and any paid arguments favoring or opposing those measures. You will also find information on voting, registering to vote, updating your voter registration, and applying for absentee ballots.

We hope this Voters' Pamphlet will help you to become better informed about the issues in this election as you prepare to make your decisions.

Sincerely,

Jay Dixon
Chair

Linda Modrell
Commissioner

Annabelle Jaramillo
Commissioner

REMEMBER TO VOTE

BENTON COUNTY

Measure No. 02-33

BALLOT TITLE

SEVEN-YEAR PERSONAL INCOME TAX TO SUPPORT PUBLIC SCHOOLS

QUESTION: Should Benton County enact a 1.25% personal income tax to support local public schools?

SUMMARY: Institutes personal income tax to offset reduced State funding for Benton County's public school districts. Annual tax rate is 1.25% of Oregon taxable income for taxpayers residing in Benton County. Taxpayers residing in a school district operating a public school outside Benton County entitled to credit equal to the tax. School districts whose residents are eligible for a tax credit will not receive local income tax funds.

School districts receive net local income tax funds in proportion to State school funding allocation. Funds help maintain and expand:

- Educational programs and classroom resources
- Instructional days
- Enrichment programs
- Health care, mental health care, safety and violence prevention services related to schools

Tax is repealed if Legislature reduces State school fund allocation for County public schools to offset net personal income tax revenues. County Commissioners must consider reducing or repealing this tax if Legislature restores funding for Benton County public schools.

Authorizes County to adopt rules and contract for administration of measure.

Estimated net annual revenue is \$8.16 million. Tax effective seven years, beginning January 1, 2003.

approximately \$8.158 million. Based on that estimate, the funds would be allocated by school district approximately as follows:

Alsea	\$246,000
Corvallis	\$5,990,000
Monroe	\$390,000
Philomath	\$1,532,000

When would measure 02-33 take effect?

The measure would be retroactive to January 1, 2003. Taxes collected would be available to schools for this school year.

How long would measure 02-33 last?

The measure contains a sunset clause that would repeal the measure after seven years. Provisions in the measure would allow the County Board of Commissioners to repeal the measure at an earlier date or reduce or eliminate the tax if state school funds are restored.

How would measure 02-33 funds be used?

Funds from measure 02-33 would be spent to maintain and expand instructional programs and address class sizes in Benton County.

Why does this measure involve the County?

Citizens of Benton County drafted the income tax measure, gathered petition signatures and filed the initiative for the September Election. The citizen initiative places measure 02-33 before the voters. If passed, it would become a County ordinance. The County would then be responsible for administering the tax system and distributing funds to school districts.

(Submitted by the Benton County Board of Commissioners)

EXPLANATORY STATEMENT

What is the status of school funding?

State tax revenues have declined over the last several years resulting in reductions in public school funding across Oregon. In Benton County last year the decline in revenue for schools led to school districts canceling school days, postponing or eliminating funds for activities and deferring replacement of worn or obsolete textbooks. Public school systems in Benton County may face a shortfall of approximately \$8 million for the upcoming school year.

To whom does measure 02-33 apply?

The measure would apply to taxpayers who reside in Benton County, regardless of where they work. People who live elsewhere and work in the County would not be subject to the measure. Residents of districts that operate a school (or schools) outside Benton County (such as Greater Albany, Central and Harrisburg) would not pay this tax.

How would the funds be used?

Funds would be allocated to Benton County school districts based on school attendance. Each district would have authority over how its allocation would be spent. District superintendents would be required to submit a report to the County Commissioners before the start of each school year showing how measure 02-33 funds would be spent. Another report about how funds were actually spent would be required at the end of each year.

How much money would measure 02-33 raise?

It is estimated that the measure would generate net receipts of

BENTON COUNTY

Measure No. 02-33

ARGUMENT FOR

We urge you to support our children and vote YES on Measure 02-33.

Measure 02-33 begins a return to educational excellence. The money raised from Measure 02-33 will help pay for classroom instruction, textbooks and educational materials, enrichment programs such as art, library services, music and sports, health and safety programs, and other learning opportunities.

Our school districts face significant budget problems. This past school year, school days were curtailed and art, music and sports programs eliminated. Measure 02-33 reverses this trend.

Measure 02-33 is a short-term solution to a long-term funding problem. If the legislature and governor restore school spending to satisfactory levels and solve the long-term funding problem, Measure 02-33 will be eliminated.

All Benton County schools benefit from Measure 02-33. This measure assists the school districts in Alsea, Corvallis, Monroe and Philomath. The measure allocates revenue based on the state equalization formula. We are bringing help to all our children, in all walks of life.

Measure 02-33 provides for spending accountability. School Districts must create Budget and Expenditure Reports each year that indicate which educational programs were funded.

Measure 02-33 is good for business. The strength and vitality of a community are largely dependent on the quality of its public schools. Schools not only educate a community's future citizens but also determine whether people and businesses stay put and move in. Simply put: A healthy, thriving community cannot exist without top-notch public schools.

Join us in voting YES on Measure 02-33.

Kevin Collins
Cliff Trow
Tony Van Vliet
Chief Petitioners

(This information furnished by Kevin Collins, Cliff Trow, and Tony Van Vliet)

The printing of this argument does not constitute an endorsement by Benton County, nor does the County warrant the accuracy or truth of any statement made in this argument.

ARGUMENT FOR

Benton County teachers ask for your support of Measure 02-33.

Benton County's teachers have long been committed to providing the students of Alsea, Corvallis, Monroe and Philomath with a well-rounded challenging educational experience. Successive waves of funding cuts over the past decade have steadily eroded the quality of this education throughout Oregon. Our backs are against the wall. Control has been wrested away from communities and once robust programs in the arts, in second languages, in tech ed, in sports and in advanced academics have been diminished or cut.

By accepting unsustainably large student loads, teachers and staff have blunted the impact of these reductions, but that is no longer possible. Class sizes continue to rise steadily and there seems to be no ceiling in sight. Measure 02-33 will be a bridge to keep important programs alive and to stem the growth of class size until the state legislature can find adequate funding for schools.

Measure 02-33 is not meant to be a long-term solution, but constitutional constraints have left it as the only workable local option.

We submit that if the state of Oregon is to recruit and retain teachers who care passionately about what they do and are to have the time to share that passion with their students, then Oregon will need to pay for it.

To continue to make a difference in the lives of Benton County children, we ask for your support. Please vote YES on Measure 02-33.

Bea Boedtger	Kay Glathar
Marty Bronstein	Bret Godfrey
Jennifer Buchanan	Becki Goslow
Paul Buchanan	Bill Goslow
Pat Canan	Ken Gouveia
Chris Caster	Sandy Grzeskowiak
Greg Caster	Jeff Gunn
Mary Collins	Chuck Holst
Peg Cornell	Bob Holt
Rob Cornell	Scott Janes
Charles Creighton	Lisa Krause
Diane Crocker	Nancy Meitle
Mike Crocker	Pat Mooney
Gary Enschede	Molly O'Malley
Dave Gable	Diane Prieue
Chris Gerding	

(This information furnished by Peg Cornell)

The printing of this argument does not constitute an endorsement by Benton County, nor does the County warrant the accuracy or truth of any statement made in this argument.

BENTON COUNTY

Measure No. 02-33

ARGUMENT FOR

The CEC urges you to vote YES! On Measure 02-33.

The Corvallis Education Coalition (CEC) is a broad grassroots organization bringing together over three hundred concerned Corvallis parents and citizens to address K-12 funding issues. Members of CEC regularly travel to Salem to meet legislators, speak before committees holding hearings on education, and keep CEC's hand on the pulse of the state legislature. It has become painfully evident from visits to Salem that the current legislature continues to accept the short-sighted view that inadequate funding for public education is an acceptable policy for our children, our communities and so for the future economic strength of our state. Benton County voters now have the opportunity, with Measure 02-33, to bring stronger local control to our schools. Benton County voters have the opportunity to turn the funding tide, which up to now has meant threadbare budgets for our schools.

If you believe that dated and worn textbooks, swollen class sizes and a reduced academic calendar are unacceptable for our children, we urge you to vote YES on Measure 02-33.

If we do nothing, the legislature would be allowed to believe that the status quo is acceptable. By passing Measure 02-33, Benton County voters will validate the importance of K-12 education to our communities and to our state.

Vote YES on Measure 02-33.

(This information furnished by The Corvallis Education Coalition)

The printing of this argument does not constitute an endorsement by Benton County, nor does the County warrant the accuracy or truth of any statement made in this argument.

ARGUMENT FOR

The League of Women Voters of Corvallis strongly endorses Measure 02-33. Our positions state:

- Local districts should be allowed funding alternatives to provide educational programs.
- Apart from state mandates, local control of the educational programs should be maintained.

Measure 02-33 will provide critical support directly to the classrooms of Benton County. Without this measure the trend toward shorter school hours, larger classes and fewer educational opportunities will continue. At a time when getting a job increasingly depends on what you know, this measure ensures that our children can realistically believe that hard work in school will pay off.

Measure 02-33 will benefit all Benton County residents, not just those with children. Our future depends on having the best educated people we can collectively muster! A highly educated and highly skilled workforce is key to attracting and retaining employers who provide the family wage jobs on which our local economy depends.

Our well educated workforce has helped shield us from the current economic downturn. Benton County has hardly been immune, but it has suffered far less than most other parts of Oregon. Our unemployment rate remains among the lowest in the state. Measure 02-33 will help maintain this advantage. The alternative is more unemployment, more crime and more public apathy and indifference. Benton County's long tradition for support of quality education should not be abandoned.

We cannot wait for the Oregon Legislature to solve the educational funding problem and condemn our children and our community to a poorer future. It is time we can take a stand, show leadership and provide for our children. Please join us in voting YES for our kids, YES for our community and YES for Measure 02-33.

*(This information furnished by Karen J. Nibler, President
LWV Corvallis)*

The printing of this argument does not constitute an endorsement by Benton County, nor does the County warrant the accuracy or truth of any statement made in this argument.

BENTON COUNTY

Measure No. 02-33

ARGUMENT FOR

**VOTE YES ON 02-33
PROTECT LOCAL SCHOOLS**

When Cody started school in 1989, he entered a kindergarten classroom of 17 kids. In 2003 his younger brother will start kindergarten in a classroom of 26. In 1989, a typical parent group would raise \$500 to pay for enrichment opportunities, like field trips. In 2003, many parent groups fundraising goals exceed \$10,000 to pay for teachers and textbooks.

The State Legislature's inability to solve Oregon's urgent funding problems has resulted in devastating and continuing cuts that threaten the sound education system on which our community relies.

Costs are increasing, revenues are not. The State is working on reducing the cost of PERS and benefits, but is not agreeing on how to provide revenue to fund adequate education for our kids.

Measure 02-33 is our chance to do what the Legislature has not - provide the basics for our schools. Initiated by citizens of Benton County, Measure 02-33 will do the following.

Provide funding for Benton County Schools

- **Funds will be distributed to all local school districts on a per-pupil basis**
- **Each school district will have the flexibility to decide how to spend the money most effectively for their particular district:**
 - **Prevent the loss of teaching positions**
 - **Reduce class sizes**
 - **Provide a challenging and varied curriculum**
 - **Restore funding towards a full school year**
 - **Save extra curricular and athletic programs slated for elimination**

**STRONG ACCOUNTABILITY MEASURES - USING TAX
DOLLARS WISELY**

- The only administrative costs are literally those relating to collecting the tax.
- Measure 02-33 provides that **the tax increase can be terminated early** by the County Commissioners if the State solves the funding problem. **The tax otherwise expires in 7 years.**

We cannot wait! Measure 02-33 provides immediate help for our local schools.

It makes sense. It's the right thing to do.

VOTE YES ON MEASURE 02-33

(This information furnished by Kids! Committee)

The printing of this argument does not constitute an endorsement by Benton County, nor does the County warrant the accuracy or truth of any statement made in this argument.

ARGUMENT FOR

Please vote YES on Measure 02-33

As a group of parents who are concerned about the state of Oregon schools, we support Measure 02-33. This measure will alleviate many of the drastic budget cuts which are anticipated for the upcoming school year. Measure 02-33 provides an opportunity for Benton County voters to specifically direct where their tax dollars will go-directly to Benton County schools.

Over the past dozen years, schools have sustained class size increases and a profound reduction in enrichment and basic opportunities (art, music, PE, library, athletic activities, and counseling services). Parent groups have attempted to make up for some of these losses through fundraising efforts. Bake sales, jogathons, and magazine drives are no longer enough. We must raise dollars for teacher salaries.

The health of Oregon's future depends on our children. Don't our children need as much teacher contact time as possible? Don't they deserve enrichment opportunities? Don't they require classroom instruction for the legal number of school days? Measure 02-33 will help keep some of these things at their current level.

Measure 02-33 is a chance to support our children and children throughout our community.

A YES vote on Measure 02-33 supports Benton County's children and our future.

- | | |
|----------------|------------------|
| Ginny Adams | Kathleen Muravez |
| Karen Brink | Cathy Peltier |
| Julie Carrico | Susan Poole |
| David Conner | Ann Turner |
| Bryan Dawley | Lisa Ullmer |
| Richard Havard | Dee Wendel |
| Patrick Hayes | Jan Zajicek |
| Jennifer Kling | David Zajicek |
| Nell O'Malley | |
| Mary Marshall | |

(This information furnished by Anne Schuster & individual parents of local children)

The printing of this argument does not constitute an endorsement by Benton County, nor does the County warrant the accuracy or truth of any statement made in this argument.

BENTON COUNTY

Measure No. 02-33

ARGUMENT AGAINST

Why should taxpayers trust any of their leaders on school funding issues? The single largest impediment to school funding is the War on Drugs. It does a quadruple whammy on school funding:

1] Because drug prohibition increases drug abuse and crime, total tax revenues are smaller due to productivity and crime losses in the general economy.

2] This smaller tax revenue is shrunk further when more taxes are diverted to law enforcement and prisons to deal with higher crime rates due to prohibition. Furthermore, additional health and social service revenue is diverted to deal with problems associated with higher drug abuse rates due to prohibition.

3] Schools have to divert money used to educate children to deal with problems of higher drug abuse among parents and children due to prohibition.

4] Families leave public schools for private schools that screen out dysfunctional families victimized by prohibition - further draining money available - based on school population.

If unchallenged, prohibition will continue to drain money away from public schools - ruining families and communities in the process. Any leader who claims to care about public safety, communities, taxpayers, children's welfare, or schools - and is not speaking against prohibition - is deliberately deceiving the public. Yet none of our legislators, county commissioners, school board members, principals, or superintendents within Benton County has challenged the War on Drugs and its lies. Our children deserve far better from our elected officials and educational leaders! Why should we pay higher taxes to bail out those who totally lack the social responsibility to speak up for communities and schools? There is one reason why no drug war advocate will never defend this vile policy anywhere near Benton County in an honest debate or discussion of drug policy issues: they have nothing but lies - and lies only work when they are unchallenged!
<http://www.geocities.com/rimchamp77/800poundgorilla.html>

(This information furnished by 800 pound gorilla)

The printing of this argument does not constitute an endorsement by Benton County, nor does the County warrant the accuracy or truth of any statement made in this argument.

ARGUMENT AGAINST

Would you give a signed blank check to the Benton County Board of Commissioners?

Unfortunately, that is exactly what the Benton County income tax proposal does. The income tax proposal has been written as a simple county ordinance. That means the Board of Commissioners can change it whenever they feel like it, just like any other county ordinance. If the proposal had been drafted as an amendment to the county charter, then it could only be changed by a vote of the people.

The income tax proponents claim that it provides four basic safeguards: it is limited in amount to 1.25% of income, it is limited in duration to seven years, it will be used only for limited school purposes, and it exempts North Albany residents from paying. But because the proposal is in the form of an ordinance and not a county charter amendment, it can be changed at any time by the Board of Commissioners. If they want to increase the percentage amount of the tax, they can. If they want to make it permanent, they can. If they want to use it for purposes other than schools, they can. If they want to cancel the North Albany exemption, they can do that too.

Would our commissioners ever be tempted to make the income tax more onerous? Oh, only if they thought it was necessary. Our experience with real property taxes demonstrates the reality. The voters had to inject strict property tax limitations into the Oregon constitution to stop local governments from a spiraling spending frenzy. The ability to elect our commissioners is not sufficient protection for taxpayers. The county income tax proposal contains no realistic limitations. It would restart the era of uncontrolled local government taxing and spending. It is a Pandora's box. It should be rejected. No more blank checks!

*(This information furnished by David Grappo, Chair.
Citizens for Good Government)*

The printing of this argument does not constitute an endorsement by Benton County, nor does the County warrant the accuracy or truth of any statement made in this argument.

BENTON COUNTY

Measure No. 02-35

BALLOT TITLE

RENEWAL OF 1998 HEALTH AND SAFETY LEVY

QUESTION: To maintain health and safety services, shall Benton County impose 47 cents per \$1,000 value for five years beginning 2004?

This measure may cause property taxes to increase more than three percent.

SUMMARY: This measure may be passed only at an election with at least a 50% voter turnout.

Levy passage would allow continuation of targeted services including:

- A program for youth 15 and under at risk of becoming serious and chronic delinquents;
- A Community Integrated Service Team (ACIST) providing prevention and early intervention service to families with children at risk for abuse, chemical dependency, delinquency and school failure;
- School Resource Deputy program in rural schools.

This levy would maintain current services estimated to cost \$2.42 million in 2004, \$2.5 million in 2005, \$2.57 million in 2006, \$2.65 million in 2007, and \$2.73 million in 2008. Service reductions in these amounts would result if the measure is not adopted.

The levy would cost \$0.47 per \$1,000 (\$5.83 per month for a \$150,000 property or \$70.50 per year). This levy would continue the health, general operations and public safety services approved in the 1998 five-year levy of \$0.35 per \$1,000. Included is an \$18 per year increase (for the same \$150,000 property) caused by inflation and expiring grant funding for school resource deputies.

Passage of this measure would continue the health and safety levy.

- One Deputy District Attorney - prosecutes about 500 cases. Five deputies prosecuted 2518 offenders in 2003.

County and State Budget Reductions

Three years ago, Benton County began responding to anticipated gaps between the cost of current services and limited local revenue. The Board of Commissioners directed County departments to reduce their General Fund spending. Belt-tightening measures saved dollars through service redesign, service elimination, and reduction of staff.

The present state budget crisis further affects services to county residents. Approximately 41% of the County's \$69 million budget is funded by state dollars. These funds pay for probation and parole for juveniles and adults, health care for those who have no other alternative, services for the mentally ill and developmentally disabled, alcohol and drug treatment, court operations, and other services.

Combined Impact of 2003 Reductions and Levy Non-Renewal

As a result of limited local revenue and state budget reductions, 36 full-time positions were eliminated, reducing corresponding services.

Should the 1998 Health and Safety levy not be renewed, approximately 30 additional full-time positions would be eliminated, reducing corresponding services.

This would be a total of 66 positions representing a 17% staffing reduction over a two-year period with corresponding reductions in the services they provide.

Renewal Cost

The levy would cost \$.47 per \$1,000 - about \$5.83 per month for a \$150,000 property or approximately \$70.50 per year. This levy would continue the health, general operations and public safety services approved in the 1998 five-year levy of \$.35 per \$1,000. Included is an \$18 per year increase (for the same \$150,000 property) caused by inflation and expiring grant funding for school resource deputies. Renewal is for five years beginning in 2004.

(Submitted by the Benton County Board of Commissioners)

EXPLANATORY STATEMENT

Renewal of the 1998 Health and Safety Levy

Revenue generated from this measure would be used to maintain current services and programs. The 5-year levy would preserve services provided by approximately 30 staff in Health, Juvenile, Law Enforcement and Public Safety areas. Renewal would allow continuation of targeted County services that address basic health and safety needs that were identified in recent community studies. Examples of targeted services funded by this levy include:

- A Community Integrated Service Team (ACIST) works with schools to provide prevention and early intervention services to families whose children are at risk of abuse, chemical dependency, delinquency and school failure - 200 families served last year.
- Program for youth 15 and under who are at risk of becoming serious and chronic delinquents - 82% improved school attendance and academic performance; 92% reduction in substance use/abuse.
- Rural School Resource Deputies - interaction with 1500 students in seven schools on substance abuse awareness, life skills promotion, and positive role modeling.

NO ARGUMENTS AGAINST THIS MEASURE WERE FILED.

BENTON COUNTY

Measure No. 02-35

ARGUMENT FOR

Benton County residents are strongly committed to and enjoy a high quality of life.

Consequently, our county consistently ranks as one of the best in Oregon when measuring results in public health and safety.

In 1998, voters endorsed Benton County's efforts to provide critical services. Benton County responded by providing programs that work! Once again we must ask for your support to **keep** these successful programs.

Vote Yes on Measure 02-35!

Keep intensive supervision and services for juveniles 15 and under at risk of becoming serious, chronic offenders. This is a **program that works!** In 2002:

- 92% reduced drug and alcohol use
- 82% improved school attendance
- 81% improved grades

Keep ACIST (A Community Integrated Service Team). ACIST works in schools to provide prevention and early intervention services to families with children at risk of child abuse, delinquency, substance addiction and school failure. Since 2000, this program has helped over 450 children.

Keep community and neighborhood policing. Deputies currently provide rural patrol and crime prevention services.

Keep school resource deputies who provide a secure environment for learning, traffic enforcement in school zones, substance abuse education, teaching of life skills, and a positive role model for students.

Keep community policing prosecution services. The DA's Office prosecuted over 2,500 cases in 2002 (an average of 503 cases per prosecutor). Ensure prosecution of criminal offenders.

"Benton County has used its resources responsibly. It needs to keep these critical programs. We urge your support for this measure."

State Senator Frank Morse
State Representative Kelley Wirth
State Representative Lane Shetterly

Measure 02-35 is endorsed by:

Albany City Council
Corvallis City Council
AFSCME Local 2064

Help us keep these vital programs. Join us in voting yes on Measure 02-35 to support our commitment to a safe and healthy community.

Benton County Commissioners
Jay Dixon, Annabelle Jaramillo, Linda Modrell
Benton County District Attorney Scott Heiser
Benton County Sheriff Jim Swinyard
Senior Judge Robert Gardner

Vote Yes on Measure 02-35!

*(This information furnished by
Citizens for a Safe and Healthy Benton County)*

The printing of this argument does not constitute an endorsement by Benton County, nor does the county warrant the accuracy or truth of any statements made in the argument.

BENTON COUNTY

Measure No. 02-36

BALLOT TITLE

RENEWAL OF ADULT JAIL SPACE RENTAL AND CORRECTIONS PROGRAM LEVY

QUESTION: Shall Benton County impose \$0.29 per \$1,000 assessed value for five years beginning 2004 to continue jail and corrections programs?

This measure may cause property taxes to increase more than three percent.

SUMMARY: This measure may be passed only at an election with at least a 50% voter turnout.

This levy would continue funding of 40 rented jail spaces for Benton County inmates in nearby county jails. Staff and supplies necessary to coordinate inmate placement and transportation are included. The levy would also continue funding an inmate transition program for inmates completing their sentence and who need assistance to successfully return to the community.

The County's existing jail can hold no more than 40 inmates. A capacity for 80 inmates is currently needed to ensure prisoners serve their full sentences and eliminate waiting lists.

Property with an assessed value of \$150,000 would pay about \$3.63 per month or approximately \$43.50 annually.

Assuming a 3% annual growth in assessed value, the tax would raise approximately \$1,495,000 in 2004, \$1,540,400 in 2005, \$1,586,600 in 2006, \$1,634,200 in 2007 and \$1,683,200 in 2008.

Passage of this measure would continue Benton County's adult jail space rental and corrections program.

Maintaining operation of the transition program would reduce the number of repeat offenders. This program provides short-term supervised lodging and employment assistance for offenders released from state prison and county jail to enhance their successful return to community life.

Interim Measure

This levy is for five years and would begin in 2004. It would allow continuation of funding to maintain adequate jail capacity. The Benton County local jail can hold no more than 40 prisoners. Prior to renting 40 jail spaces in other counties in 2001, sentenced prisoners served only about half their time due to lack of capacity. Some prisoners waited up to 30 days to begin serving a sentence. Early release and waiting list statistics indicate that at least 80 spaces are needed if all prisoners are to serve their full sentence. The levy also continues the transition program to reduce the number of repeat offenders.

Renewal Costs

The maximum tax rate of this levy renewal has been reduced from the voter approved current rate of \$.31 per \$1,000 of assessed value, which expires in 2004, to the proposed rate of \$0.29 per \$1,000. This levy renewal is for five years and would begin in 2004.

A property with an assessed value of \$150,000 would pay about \$3.63 per month or approximately \$43.50 in continuing property tax annually.

(Submitted by the Benton County Board of Commissioners)

EXPLANATORY STATEMENT

Renewal of Adult Jail Space Rental and Corrections Program Levy

The goal of this measure is to continue funding for rental of 40 jail spaces for Benton County inmates in nearby county jails. It would also continue funding for:

- Staffing and supplies necessary to coordinate inmate placement and transportation.
- Operating a transition program for inmates completing their sentence who need extra assistance to successfully return to the community.
- Maintaining video link technology to counties housing Benton County prisoners. These systems allow judges to conduct video court appearances thereby minimizing transport between other jails and Benton County courts.

Role of the Jail in Criminal Justice System

A jail is one component of the entire criminal justice system. Today the courts, District Attorney, and parole and probation officers depend on the jail as the final local sanction to manage offenders. Benton County parole and probation officers supervised over 950 adult offenders during the fiscal year ending June 30, 2003, with a daily caseload average of 525. Maintaining the current 40 jail rental spaces increases the effectiveness of alternative sanction programs such as work crew, community service and various treatment programs, because failure to comply would result in immediate incarceration.

NO ARGUMENTS AGAINST THIS MEASURE WERE FILED.

BENTON COUNTY

Measure No. 02-36

ARGUMENT FOR

Please give the levy to continue the rental of jail space your serious consideration.

Adequate jail space is directly linked to public safety and is essential to limit the number of inmates that officials are forced to release prior to completion of sentences. Jail sentences should be imposed thoughtfully and the space should be used appropriately, but the effectiveness of our criminal justice system overall is affected when this important tool is unavailable. Consider these facts:

1. The number of releases due to overcrowding significantly declined after additional jail space became available by virtue of the funds from the previous levy.
2. Even when releases based on overcrowding are necessary, released defendants serve significantly more of their sentences because of the additional jail space.

Benton County judges support and regularly utilize alternative sanctions, such as work crew and community service, and often require treatment for drug and alcohol offenders along with appropriate sanctions. However, a lack of adequate jail space undermines the effectiveness of these other tools when judges cannot impose jail sentences that they promise will result from noncompliance.

The additional jail space made available by voters' passage of the three year levy in November 2000 has made a tremendous difference. We are now able to incarcerate sentenced criminal defendants so that they serve the jail time imposed. We are now able to keep high risk inmates in custody awaiting trial. Probation officers are now able to impose meaningful sanctions for probation violations. Defendants with substance abuse problems are now under more pressure to seriously deal with their addictions.

We have seen the community risks that come with a shortage of jail space. It would not be beneficial to repeat that history.

(This information furnished by Janet Schoenhard Holcomb, Presiding Judge, Benton County Circuit Court)

The printing of this argument does not constitute an endorsement by Benton County, nor does the county warrant the accuracy or truth of any statements made in the argument.

ARGUMENT FOR

The current 27-cell (40 inmates) jail is woefully inadequate to meet the County's needs. Benton County has the smallest jail per capita in Oregon, less than a quarter of the state average.

In 2000, the citizens of Benton County voted:

- **To rent jail space.** Benton County responded by contracting space for 40 additional inmates in neighboring counties. This doubled the County's capacity.
- **To provide transportation** of inmates. In 2002, there were 11,088 inmate days and 1,963 prisoners transported to and from court and for medical services.
- **To provide a transition program** for indigent, released inmates to facilitate their return to the community by providing guidance, a supervised short-term living facility, and employment counseling.

Vote Yes on Measure 02-36!

Keep these critical services.

- **Avoid** reducing inmate capacity from 80 to 40;
- **Avoid** overcrowding which results in:
 - Release of potentially dangerous pre-trial offenders;
 - Sentences not served;
 - Limited sanctions for probation/parole violators;
 - Reducing effectiveness of the criminal justice system;
 - Returning to extended waiting periods to serve a sentence;
 - Increased failure to appear in court.
- **Avoid** reducing rehabilitative services.

Measure 02-36 is endorsed by:

Senator Frank Morse
 Representative Kelley Wirth
 Representative Lane Shetterly
 Albany City Council
 Corvallis City Council
 AFSCME Local 2064

Measure 02-36 is a simple and inexpensive short-term solution to a critical need in Benton County. This levy renewal will cost about 6% less than the current rate.

Please join us in voting YES on Measure 02-36!

Benton County Commissioners
 Jay Dixon, Annabelle Jaramillo, Linda Modrell
 Benton County District Attorney Scott Heiser
 Benton County Sheriff, Jim Swinyard
 Senior Judge Robert Gardner

Vote YES on Measure 02-36!

(This information furnished by Citizens for a Safe and Healthy Benton County)

The printing of this argument does not constitute an endorsement by Benton County, nor does the county warrant the accuracy or truth of any statements made in the argument.

McDONALD FOREST ESTATES ROAD DISTRICT

Measure No. 02-34

BALLOT TITLE

MAJOR ROAD PAVING THREE-YEAR LOCAL OPTION TAX LEVY

QUESTION: Shall McDonald Forest Estates Road District impose a levy of \$.49 per \$1,000 assessed value for three years beginning 2003?

This measure may cause property taxes to increase more than three percent.

SUMMARY: This measure may be passed only at an election with at least 50 percent voter turnout.

Recent road repair expenses have exhausted the funds of the road district. The major roadway of Tanager/Siskin will need a chip seal application in FY 2006. This three year tax levy will provide for that work.

The tax will net approximately \$3,900 to the district for each of the three years totaling about \$11,700. Property with an assessed value of \$200,000 would pay approximately \$98 annually for this special three-year levy. The existing ongoing levy will provide for regular maintenance and will not be affected by this levy.

EXPLANATORY STATEMENT

Improvement of the gravel road surfaces in the last three years for the purpose of reducing long term maintenance costs has depleted the district's funds. Even with this effort, two road spurs have yet to be chip sealed.

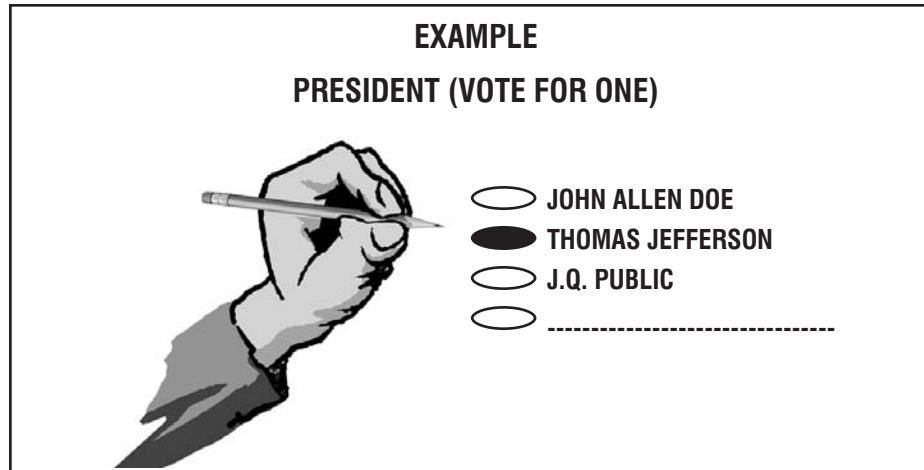
To preserve the Tanager/Siskin road surface, the main road in the district, a chip seal or equivalent should be applied in 2006. Under the current regular annual levy, the district will not have sufficient funds available to perform the work when it is needed. When combined with the existing district road levy, the three year local district levy will supply sufficient funds to perform this major paving work.

*(Submitted by Carl L. Baker, President,
McDonald Forest Estates Road District)*

NO ARGUMENTS FOR OR AGAINST
THIS MEASURE WERE FILED.

VOTING INSTRUCTIONS

1. TO VOTE YOU MUST USE A PENCIL TO BLACKEN THE OVAL (●) TO THE LEFT OF THE CANDIDATE OR RESPONSE OF YOUR CHOICE.
2. TO **WRITE-IN A NAME** — BLACKEN THE OVAL (●) TO THE LEFT OF THE DOTTED LINE AND WRITE-IN THE NAME ON THE DOTTED LINE.



WHO MAY REGISTER TO VOTE?

Anyone who is:

- ◆ A resident of Oregon;
- ◆ A United States citizen; and
- ◆ 18 years of age or older.

You may register to vote before your 18th birthday or before you are sworn in as a US citizen. In order to register under these conditions, you must turn 18 or be sworn in as a US citizen during the 20-day period immediately before the election. Please call your county elections officer for details if you believe you qualify for this registration process.

DO I HAVE TO REGISTER BY PARTY?

No. If you do not want to be affiliated with a political party, you may check the box that states *Not a member of a party*. You may not designate or change a party affiliation after the 21st day before the primary election.

I WILL BE OUT OF TOWN WHEN BALLOTS ARE MAILED. HOW DO I GET A BALLOT?

Absentee ballots are available 45 days before the election. You may request an early absentee ballot from your county election official either in person, by mail, or by fax. You will need to include your name, signature, residence, address and, if different, your mailing address.

WHAT IF MY BALLOT DOESN'T COME?

If you have not received your ballot within a week after they are mailed, call your county election office. They will check that your voter registration is current. If it is, they will mail you a replacement ballot.

WHAT IF I HAVE MOVED AND HAVE NOT UPDATED MY REGISTRATION?

If you are registered to vote by the 21st day before the election but now have a different address and:

- ◆ You have moved within the same county, contact the county election office. They will instruct you on the process to follow to qualify for a replacement ballot.
- OR
- ◆ You have moved to a different county, go to the election office in your new county.

WHAT IS A PRIMARY ELECTION?

- ◆ Major political parties (Democratic & Republican) nominate their candidates at a primary election, which is held on the third Tuesday in May of each even-numbered year. Only a voter who is registered as a member of either political party may vote for that party's candidates at the primary election unless the party opens its primary to voters registered as *Not a member of a party*. If this is the case, voters who are *Not a member of a party* must request major party ballots from their county election office.
- ◆ All nonpartisan offices (i.e. judges and district attorneys) are also on the primary election ballot. Any registered voter may vote for those candidates, regardless of the voter's political party affiliation.

ABSENTEE APPLICATION



BENTON COUNTY ELECTIONS DIVISION
 120 NW 4TH ST RM 13
 CORVALLIS, OR 97330
 Tel: (541)766-6756 Fax: (541)766-6757
 Website: www.co.benton.or.us/elections
 E-mail: bcelections@co.benton.or.us

ABSENTEE BALLOT APPLICATION

Please select the category(ies) that applies(y) to you:

- Military Overseas Snowbird Student Other

I am applying for an absentee ballot for:

- This election only _____ (mth/day/yr)
 All future elections until _____ (mth/day/yr)
 I will be away from _____ (mth/day) till _____ (mth/day) yearly
 I will be in Benton County from _____ (mth/day) till _____ (mth/day) yearly
 This will continue to happen until _____ (mth/day/yr)

Name (Last, First, Middle)	Date of Birth
----------------------------	---------------

Absentee Address Line 1

Absentee Address Line 2 (if needed)

City, State, Zip / COUNTRY

Benton County Residential Address

City, State, Zip

Signature:	Date:
------------	-------

Note: An original signature is required.

PLEASE PRINT

ELECTION QUESTIONS?
WEB PAGE - www.co.benton.or.us/elections
Email - bcelections@co.benton.or.us
Office Phone: 541-766-6756

BENTON COUNTY ELECTIONS BALLOT DROP SITES

24 HOUR OUTSIDE BALLOT DROP BOXES IN CORVALLIS:
Wells Fargo Bank in Timberhill Shopping Center at 2543 Kings Ave. & the Courthouse at 180 NW 5th Street

CITY OF ADAIR COMMUNITY CENTER

6030 NE William R. Carr Ave. - Adair Village
 Mon. thru Fri. 8:00 AM to 5:00 PM*
 745-5507

CORVALLIS PUBLIC LIBRARY

645 NW Monroe Ave - Corvallis
 Mon. thru Fri 10:00AM to 9:00 PM
 Sat. 10:00AM to 6:00 PM
 Sun. 12:00 NOON to 6:00 PM
 757-6926

JOHN BOY'S ALSEA MERCANTILE STORE

186 Main Steet, Alsea
 Mon - Sat 6:00 AM - 9:00 PM
 Sun 7:00 AM - 8:00 PM
 487-4462

MONROE CITY HALL

664 Commercial St. - Monroe
 Mon. thru Fri. 8:00 AM to 5:00 PM*
 847-5175

O.S.U. MEMORIAL STUDENT UNION

Mon. thru Thus. 7:00 AM to 11:00 PM
 Fri. 7:00 AM to 12:00 MIDNIGHT
 Sat. 7:30 AM to 12:00 MIDNIGHT
 Sun. 10:30 AM to 11:00 PM
 (When college is in session)
 737-2416

NORTH ALBANY MIDDLE SCHOOL

815 Thornton Lake DR NW - Albany
 Mon. thru Fri. 7:00 AM to 4:00 PM*
 967-4541

PHILOMATH PUBLIC LIBRARY

1050 Applegate - Philomath
 Mon., Thus. Fri. & Sat. 10:00 AM to 5:00 PM
 Tues., Wed. 10:00 AM to 8:00 PM
 929-3016

SENIOR CITIZENS CENTER

2601 NW Tyler Ave - Corvallis
 Mon. thru Fri. 8:00 AM to 4:00 PM*
 766-6959

BENTON COUNTY ELECTIONS DIVISION

Basement, County Courthouse
 120 NW 4th St. - Corvallis
 Mon. thru Fri. 8:00 AM to 5:00 PM*
 766-6756

*All ballot sites open until 8 PM Election Day

Benton County VOTERS' PAMPHLET

Election September 16, 2003

“The will of the people is the only legitimate foundation of any government,
and to protect its free expression should be our first object.”

Thomas Jefferson

PUBLISHED BY THE
BENTON COUNTY BOARD OF COMMISSIONERS



Election Questions?

Call

Benton County
Elections Division

766-6756 (TTY/TDD 766-6080)

Fax 766-6757

e-mail: bcelections@co.benton.or.us