

BENTON COUNTY VOTERS' PAMPHLET



PRIMARY ELECTION MAY 18, 2004

PUBLISHED BY THE
BENTON COUNTY
BOARD OF COMMISSIONERS

Please RECYCLE this pamphlet with your newspapers

ATTENTION

This is the beginning of your county voters' pamphlet. The county portion of this joint voters' pamphlet is inserted in the center of the state portion. Each page of the county voters' pamphlet is clearly marked with a gray screen bar on the outside edge. All information contained in the county portion of this pamphlet has been assembled and printed by the Benton County Elections Office.



BOARD OF COMMISSIONERS

408 SW Monroe Ave., Suite 111
P.O. Box 3020
Corvallis, OR 97339-3020
(541) 766-6800
FAX (541) 766-6893

Dear Benton County Voter:

On May 18, 2004, an election will be held in Benton County. As a voter, you will have an opportunity to exercise your right to vote on candidates for Benton County, the State of Oregon, and the United States Congress.

The **Benton County Voters' Pamphlet** is inserted in the statewide Voters' Pamphlet, and together they provide information on candidates that appear on ballots within Benton County.

Please remember that all ballots, whether mailed or delivered, **must be received no later than 8:00 p.m. on Tuesday, May 18, 2004.** Ballots should be mailed or delivered to:

- The Benton County Elections Office, located in the basement of the historic Courthouse at 120 NW 4th Street in Corvallis

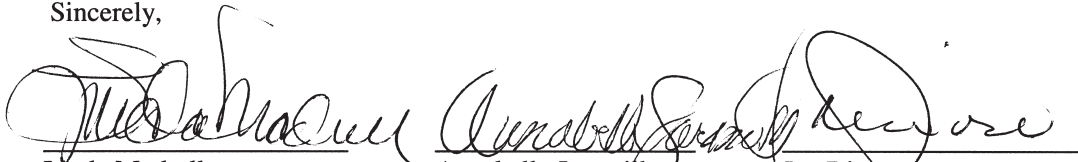
OR

- One of the official ballot drop sites located throughout the County. A list of ballot drop site locations is included in this Voters' Pamphlet.

This Voters' Pamphlet contains statements submitted by the candidates. You will also find information on voting, registering to vote, updating your voter registration, and applying for absentee ballots.

We hope this Voters' Pamphlet will help you to become better informed as you prepare to make your decisions.

Sincerely,



Linda Modrell Annabelle Jaramillo Jay Dixon
Chair Commissioner Commissioner

REMEMBER TO VOTE

Benton County

Commissioner, Position 2



**JAY
DIXON**
DEMOCRAT

OCCUPATION: Benton County Commissioner.
OCCUPATIONAL BACKGROUND: Co-owner, retail business; Senior Officer, major banks; Chief Operating Officer, security firm; Director, Washington State Criminal Justice Education and Training Center; Law Enforcement Consultant, Office of the Governor, Washington State; Lieutenant, Seattle Police Department; Community College Instructor.

EDUCATIONAL BACKGROUND: BS, University of San Francisco; Pacific Program Graduate; University of Oregon.
PRIOR GOVERNMENTAL EXPERIENCE: Chair, Benton County Board of Commissioners; Chair, City of Corvallis Budget Commission; Chair, Willamette Criminal Justice Council; Vice Chair, Cascades West Council of Governments; Vice Chair, Corvallis Community Policing Forum; Executive Committee, Region 4 Workforce Development Board; Executive Committee, Benton County Commission on Children and Families; Board of Commissioners, Linn-Benton Housing Authority; Corvallis School Board member; Oregon Community Corrections Commission; National Association of Counties Justice and Public Safety Steering Committee; Cascades West Council of Governments Loan Program Advisory Committee; Association of Oregon Counties Public Safety Committee; Benton County Economic Vitality Partnership; Oregon State University Business Alliance; Linn-Benton Community College Business & Supervisory Management Committee.

Jay Dixon – Brings Balance to Government

"I recognize my role as an elected official must be to improve the way government works with limited dollars. I am fiscally prudent and optimistic that if we work together we can develop creative solutions."

Jay Dixon – Gets Things Done

"In the past four years, we have made progress in key areas such as fixing our roads, increasing collaboration among community and government entities, increasing access to youth activities for low-income families, and keeping a focus on affordable housing. We must continue this work to maintain Benton County's livability."

Jay Dixon – Cares about Citizens

"We need to continue our focus on family wage jobs and encourage new jobs, expand access to affordable health care, and create a citizen driven vision for the County's future."

Jay Dixon – The Right Choice for Benton County Commissioner

*Paid for by Dixon for Commissioner, Richard M. Hendrick, Treasurer
3064 NW Maxine Circle, Corvallis 97330*

(This information furnished by Dixon for Commissioner)

Commissioner, Position 2



**RANDY
KILLEN**
REPUBLICAN

OCCUPATION: General Contractor.
OCCUPATIONAL BACKGROUND: General Contractor, Developer; Killen Construction, partner, 1983 – 1994; Killen Development LLC, owner and manager, 1994 – present.
EDUCATIONAL BACKGROUND: Sprague High School, Walla Walla College.
PRIOR GOVERNMENTAL EXPERIENCE: None.

Personal: Married to Sabra Killen for 18 years; father of four children

Community Volunteer: Boy Scout Leader, AYSO Soccer Coach, Meals on Wheels, Community Outreach facility development, Youth Summer Camps, Corvallis' Sister City Program.

Business Focus:

Those who know Randy, recognize his keen sense of fiscal management. As a successful builder and businessman for many years, he knows the meaning of economy and resource management, and understanding of the "ins and outs" of financial accounting. Randy has worked as a volunteer financial auditor for a number of organizations in Benton and Lincoln Counties.

Randy Killen's Vision for Benton County:

- ⇒ Strive to maintain the current strengths and reputation of this county, and to always focus on improving the effectiveness, quality and reliability of the county's services.
- ⇒ Keep an open mind to the diversity of opinions among our citizenry and try to represent a broad spectrum of the county peoples. Support local law enforcement.
- ⇒ Support the wise use of land use regulations in order to maintain community livability.
- ⇒ Support community and business development, as I see a real need for jobs and economic growth in our area. As an employer, I love the feeling of giving a good wage for good work, realizing that my employees have families depending on them, and indirectly depending on me.

I love Benton County. Now I would like to have a chance to make things better as your County Commissioner. My experience in owning and running a construction business locally gives me a detailed knowledge of local land use policy, city and county development agencies, and plenty of "good ol' common sense".

Vote Randy Killen for Benton County Commissioner

(This information furnished by Friends of Randy Killen)

Benton County

Commissioner, Position 3



**ANNABELLE
JARAMILLO**

DEMOCRAT

OCCUPATION: Benton County Commissioner.
OCCUPATIONAL BACKGROUND: Citizens' Representative for Governor Kitzhaber; research botanist; development director; civil rights advocate; teacher; diversity, motivation, employment and computer trainer.

EDUCATIONAL BACKGROUND: B.S., M.S. - Biology, Portland State University

PRIOR GOVERNMENTAL EXPERIENCE: Over twenty-nine years of government service including numerous local, state, and federal boards, commissions, and committees. Currently serves on Association of Oregon Counties Public Lands Committee; Council of Forest Trust Land Counties; Governor's Law Enforcement Contact Committee; Governing Board, Community Services Consortium; Bureau of Land Management Resource Advisory Committee; Coast Range Province Advisory Committee.

Community Service: United Way of Benton County Board; American Leadership Forum Senior Fellow; American Civil Liberties Union of Oregon Board; Mary's Peak Natural Resources Interpretive Center Organizing Group; Imagine One Philomath Steering Committee; Foster Grandparents Board; Economic Development Partnership Board

Annabelle Jaramillo knows Benton County residents value their neighbors, good jobs and a clean, healthy environment.

Annabelle Jaramillo uses our resources wisely.

Annabelle Jaramillo is thoughtful, knowledgeable and a good listener.

Annabelle Jaramillo unifies our county by encouraging citizen involvement and respecting county workers.

"When I asked for your vote in 2000, I committed to providing leadership and good stewardship for Benton County. My colleagues and I have worked well together to create a Benton County government that supports our employees, our communities and all our residents.

The revenue crisis forces us to make painful choices. We struggle to preserve programs that serve the health and safety needs of county residents. Through reorganization, diligence, creativity and old fashioned penny pinching, we make every effort to meet these challenges.

I want to continue this work! I am committed to a vision of Benton County where we and future generations can experience rich and rewarding lives."

Annabelle Jaramillo

**Re-Elect Annabelle Jaramillo - Democrat for Benton County
Commissioner**

Jaramillo for Commissioner, POB 3004-157, Corvallis, OR 97339
541-758-8523
annabellejaramillo.com

*(This information furnished by
Jaramillo for Commissioner Committee)*

Commissioner, Position 3



**DAVID
E.
SMITH**

REPUBLICAN

OCCUPATION: Industrial Distribution.
OCCUPATIONAL BACKGROUND: Educator: Writer/producer of flight training programs; Ricks College, flight education ; 6th grade teacher, Western Samoa.

EDUCATIONAL BACKGROUND: Oregon State University: Ph.D. in Education; Brigham Young University: M.S. Industrial Education; San Jose State University: B.A. Elementary Education.

PRIOR GOVERNMENTAL EXPERIENCE: Santa Clara County (CA) Commissioner on drug abuse; Santa Clara County Reserve deputy sheriff: Received letters of commendation and recommendation in the line of duty; Seasonal Ranger, Rocky Mountain National Park; Mayor of Teachers' Village, Western Samoa.

WHY I'M RUNNING:

For too long, one voice and one perspective has been represented on the Benton County Commission. I will bring a centrist, common sense approach to county government. It isn't right to "oil the squaky wheel" without examining the real needs and concerns of all our citizens. As a commissioner, I'll bring honesty, trust and realistic solutions to the challenges found within our county services.

LOCAL BUSINESS:

Benton County is among the most anti-business counties in the state. I'll fight to remove the "We're closed" sign and replace it with a "We're Open for Business" sign. By adding more local jobs, we'll jump-start our economy and reduce Oregon's shameful unemployment rate. Let's make Benton County an attractive place to work. I support wise application of land use regulation to maintain Benton County's wonderful livability.

EXCESSIVE TAXATION:

The present commissioners have repeatedly pushed to raise taxes. Voters have said "No" to these tax increases. I'll work to make county government more efficient and more responsive to the needs of the general public and set common sense budget priorities without raising taxes.

PUBLIC SAFETY:

We must not consolidate local law enforcement. A one-size fits all approach won't work. What we save on the budget, we lose in services. Consolidation of agencies is not a safe compromise.

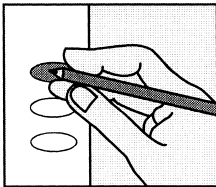
FOR POSITIVE CHANGE AND NEW DIRECTION
Vote DAVE SMITH for Benton County Commissioner

(This information furnished by Dr. Dave Smith)

Vote!

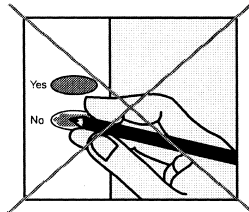
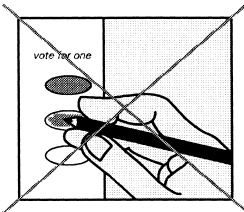
check your ballot!

Make sure you have completely filled in the oval next to your choices.



If you vote for more candidates than allowed, or if you vote **both** Yes **and** No on a measure, it is called an overvote.

Your vote **will not count** for that candidate or measure.



You do not have to vote on all contests. Those you do vote on will still be counted.

Contact (County Elections Office) to request a replacement ballot if:

- you make a mistake
- your ballot is damaged or spoiled
- your ballot is lost

or for any other reason.

Benton County Elections - (541) 766-6756
1 866 ORE VOTES (se habla Español)
www.oregonvotes.org
TTY 1 866 350 0596

CASTING BALLOTS IN BENTON COUNTY

USE A PENCIL

Darken the oval next to the candidate or response you wish to vote for.

Write in Candidate(s) – Darken the oval(s) next to a blank line for that office and write in the name of the candidate(s) you wish to vote for.

If you used a pen, you can go over it in pencil.

You may sign your envelope with pen or pencil.

Ballots must be in drop boxes or an elections office no later than 8:00 PM Election Day. Postmarks do not count.



HOW TO VOTE IN OREGON

WHO MAY VOTE?

Anyone who is:
A resident of Oregon
A United States Citizen
18 years old or older
Has registered to vote

You may register to vote before your 18th birthday, or before you become a citizen, if you will be both by the date of the election.

DO I HAVE TO PICK A PARTY?

No. If you do not wish to be affiliated with a political party, check the box that states "Not a member of a party". You will not receive Democratic or Republican candidates on your ballots for the May Primary Election if you are registered as a Non-affiliated voter.

I WILL BE GONE WHEN THE BALLOTS ARE MAILED. HOW CAN I GET ONE?

Absentee ballots are available before Election Day. Send a written request which includes your name, where the ballot is to be sent, how long you will be gone, and your signature, by fax, mail, or stop by the Elections Office at 120 NW 4th Ave RM 13. Your signature gives us permission to send the ballot to a different location or at a different time.

WHAT IF MY BALLOT HASN'T COME?

If your ballot has not arrived a week after your neighbors, call the Elections Office at 766-6756. We can check on your status as a voter and send a ballot if you qualify.

I HAVE MOVED AND DIDN'T GET A BALLOT.

It is the voter's responsibility to contact the Elections Office when they move, change their PO Box, or take a new name. Voter Registration cards can be found in most phone books, or many public buildings. Once filled out, mail or take the registration card to your local County Clerk's Office.

USE A PENCIL TO VOTE!

BENTON COUNTY ELECTIONS BALLOT DROP SITES

24 HOUR OUTSIDE BALLOT DROP BOXES IN CORVALLIS:

**Wells Fargo Bank in Timberhill
Shopping Center at 2543 Kings Ave. &
the Courthouse at 180 NW 5th Street**

ADAIR – FISH AND WILDLIFE OFFICE

7118 NE Vanderburg Ave - Adair Village
Mon. thru Fri. 8:00 AM to 5:00 PM*
745-5507

JOHN BOY'S ALSEA MERCANTILE STORE

186 Main Street, Alsea
Mon – Sat 6:00 AM – 9:00 PM
Sun 7:00 AM – 8:00 PM
487-4462

CORVALLIS PUBLIC LIBRARY

645 NW Monroe Ave - Corvallis
Mon thru Thur. 10:00 AM to 9:00 PM
Fri. & Sat 10:00 AM to 6:00 PM
Sun 2:00 to 6:00 PM
757-6926

MONROE CITY HALL

664 Commercial St - Monroe
Mon. thru Fri. 8:00 AM to 5:00 PM*
847-5175

O.S.U. MEMORIAL STUDENT UNION

Mon thru Thus 7:00 AM to 11:00 PM
Fri 7:00 AM to 12:00 MIDNIGHT
Sat 7:30 AM to 12:00 MIDNIGHT
Sun 10:30 AM to 11:00 PM
(When college is in session)
737-2416

NORTH ALBANY MIDDLE SCHOOL

1205 North Albany Rd NW - Albany
Mon. thru Fri. 7:00 AM to 4:00 PM*
967-4541

PHILOMATH PUBLIC LIBRARY

1050 Applegate - Philomath
Mon, Thur, Fri. & Sat 10:00 AM to 5:00 PM
Tues and Wed. 10:00 AM to 8:00 PM
929-3016

SENIOR CITIZENS CENTER

2601 NW Tyler Ave - Corvallis
Mon. thru Fri. 8:00 AM to 4:00 PM*
766-6959

BENTON COUNTY ELECTIONS DIVISION

Basement, County Courthouse
120 NW 4th St - Corvallis
Mon thru Fri 8:00 AM to 5:00 PM*
766-6756

*All ballot sites open until 8 PM Election Day

TO REQUEST AN ABSENTEE BALLOT

This is not a voter registration form.

You must be a registered voter to request an absentee ballot.

If you are unsure of your voting status, contact the Benton County Elections Office

Fill out the form shown below.

Be sure the person requesting the absentee ballot signs it.

Mail, fax, or bring the form to Benton County Elections as soon as possible.

You may bring an absentee ballot request in for someone else, but they must sign it.

Ballots received after 8:00 PM Election Day cannot be counted.

If mailing your ballot, be sure to allow enough time for it to arrive by the deadline.

ABSENTEE APPLICATION

Please select the category that applies to you:

Military Overseas Snowbird Student Other

I am applying for an absentee ballot for:

This election only _____ (m/d/y)

All future elections until _____ (m/d/y)

I will be away from _____ (m/d) till _____ (m/d) yearly

I will be in Benton County from _____ (m/d) till _____ (m/d) yearly

This will continue to happen until _____ (m/d/y)

Name (Last, First, Middle)	Date of Birth
----------------------------	---------------

Absentee Address Line 1

Absentee Address Line 2 (if needed)

City, State, Zip / COUNTRY

Benton County Residential Address

City, State, Zip

Signature:	Date:
------------	-------

PLEASE PRINT

Note: An original signature is required. Mail or fax, or bring in completed form. Do not e-mail.

Mail applications to Elections, PO Box 888, Corvallis, Oregon 97339

Fax applications to 541 766-6757

Bring application to Benton County Courthouse, 120 NW 4th St., Room 13, Corvallis, Oregon

**Benton County
VOTERS' PAMPHLET
Primary Election
May 18, 2004**

Elections Office Open 7:00 A.M. to 8:00 P.M. Election Day

**PUBLISHED BY THE
BENTON COUNTY BOARD OF COMMISSIONERS**



**Election Questions?
Call: 541 766-6756
Fax: 541 766-6757
email: www.co.benton.or.us/elections**