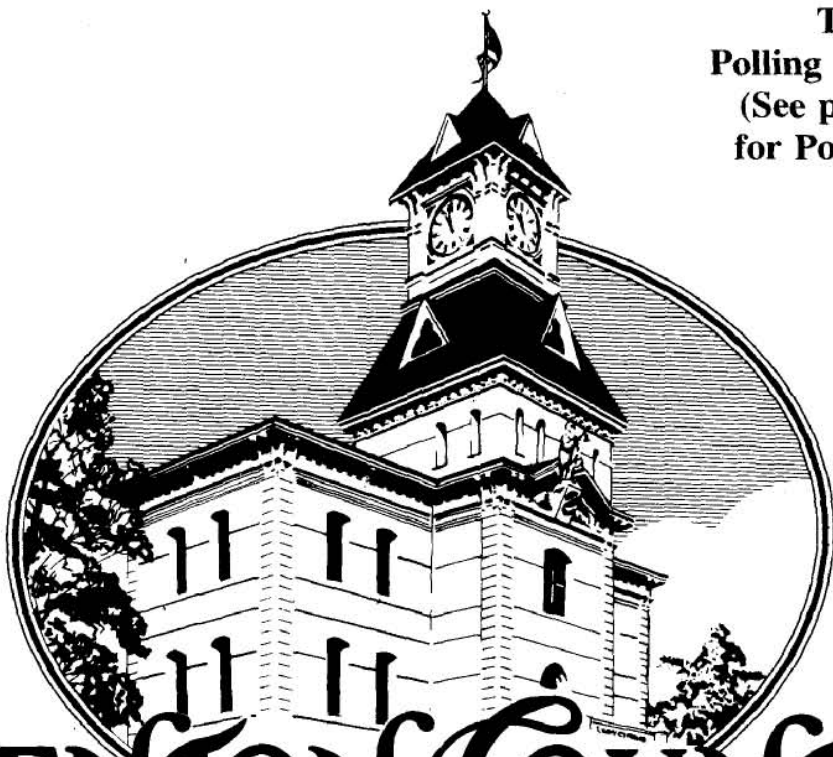


BENTON COUNTY VOTERS' PAMPHLET

This is a
Polling Place Election
(See pages B28-30
for Poll Locations)



BENTON COUNTY

O • R • E • G • O • N

**GENERAL ELECTION
NOVEMBER 8, 1994**

**Published by
Benton County Board of Commissioners**

ATTENTION:

This is the beginning of your county voters' pamphlet. The county portion of this joint voters' pamphlet is inserted in the center of the state portion. Each page of the county voters' pamphlet is clearly marked with a color bar on the outside edge. All information contained in the county portion of this pamphlet has been assembled and printed by the Benton County Department of Records and Elections, 757-6756.



Please **RECYCLE** this pamphlet with your newspapers



BOARD OF COMMISSIONERS

180 NW 5th Street
Corvallis, OR 97330-4777
(503) 757-6800
FAX (503) 757-6893

Dear Fellow Benton County Voter:

On **November 8, 1994**, a General Election will be held at which you will have an opportunity to exercise your rights and privileges to elect candidates and enact laws.

The Benton County Board of Commissioners has created the Local Voters' Pamphlet in order to provide information about local candidates and measures, and to assure that all voters are well informed about the choices they will face when they go to the polls on **November 8**.

The Local Voters' Pamphlet includes a sample ballot, instructions on voting, texts of measures, required information about the candidates, and a list of County polling places. Also, many candidates have taken the option of paying a fee to include additional information about themselves, their goals in running for office, and their candidacy.

Once again, in an effort to reduce the production and mailing costs associated with providing this information, Benton County has contracted to insert its Local Voters' Pamphlet in the State Voters' Pamphlet.

It is our hope that the information provided in the Benton County Local Voters' Pamphlet will assist you in making wise and informed choices for our community.

Sincerely,

Pam Folts, Chair
Benton County
Commissioner

Kent Daniels
Benton County
Commissioner

John Dilworth
Benton County
Commissioner

VOTE
NOVEMBER 8, 1994

TABLE OF CONTENTS

	page
Voting Instruction	B3
Sample Ballots	B4-6
Measures, Explanatory Statements, and Paid Arguments	B7-10
Candidate Information (required and optional)	B11-24
Political Party Statements	B25-27
Poll Locations	B28-30

VOTING INSTRUCTIONS

VOTING YOUR BALLOT

- Step 1:** Sign Poll Book and receive Ballot with Secrecy Protector
Step 2: Take Ballot and Secrecy Protector to Voting Booth
Step 3: Use the Ballot Marking Instrument in the Voting Booth
Step 4: Vote by connecting the Head and Tail of the Arrow pointing to the Candidate of your Choice

Example:

George Washington
Susan B. Anthony
Abraham Lincoln

Vote for One



- Step 5:** To Vote for a Candidate whose name does not appear on the ballot, Write name on "Write In" line and Complete Arrow pointing to that line.

Example:

Write In Millard Filmore 

- Step 6:** Vote on Measures by completing the Arrow pointing to either the

"YES"



or

"NO"



- Step 7:** When you have Completed Voting, place Ballot in Secrecy Protector with Stub Portion extending Outside the Protector

- Step 8:** Ballot Box Attendant will remove stub, then You slide Ballot into Ballot Box and return empty Secrecy Protector to Attendant

Remember to vote BOTH SIDES of Your Ballot

BENTON COUNTY, OREGON

SAMPLE BALLOT

November 8, 1994 General Election



This sample ballot is a composite of all measures and offices appearing on the ballots in Benton County. Not all voters are eligible to vote on every measure or office listed on this Sample Ballot.

NATIONAL

U.S. Representative in Congress
4th District Vote for One

JOHN D. NEWKIRK Republican ←

PETER DEFAZIO Democrat ←

Write In ←

U.S. Representative in Congress
5th District Vote for One

JIM BUNN Republican ←

CATHERINE WEBBER Democrat ←

JON E ZIMMER Libertarian ←

Write In ←

STATE OF OREGON

Governor
Vote for One

ED HICKAM American ←

DAN FORD P. VANDER PLOEG Libertarian ←

JOHN KITZHABER Democrat ←

DENNY SMITH Republican ←

Write In ←

Commissioner of the Bureau of Labor and Industries
Vote for One

MARY WENDY ROBERTS (Portland) Democrat ←

JACK ROBERTS (Eugene) Republican ←

Write In ←

State Senator

18th District Vote for One

RICH RODEMAN Republican ←

CLIFF TROW Democrat ←

Write In ←

State Senator

19th District Vote for One

MAE YIH Democrat ←

Write In ←

State Representative

34th District Vote for One

MONA K-HINDS Democrat ←

JOHN SCHOON Republican ←

Write In ←

State Representative

35th District Vote for One

NORMA NIELSON Republican ←

BARBARA ROSS Democrat ←

Write In ←

State Representative

36th District Vote for One

CAROLYN OAKLEY Republican ←

PETER TARZIAN Democrat ←

Write In ←

BENTON COUNTY

Commissioner

Position 1 Vote for One

KENT DANIELS Democrat ←

RUSS SAPP Republican ←

Write In ←

NONPARTISAN

STATE OF OREGON

Judge of the Court of Appeals
Position Ten

Vote for One

REX ARMSTRONG ←

BARRY L. ADAMSON ←

Write In ←

Judge of the Supreme Court
Position Three

Vote for One

ROBERT D. DURHAM Incumbent ←

Judge of the Court of Appeals
Position Five

Vote for One

RICK HASELTON Incumbent ←

Write In ←

Judge of the Court of Appeals
Position Seven

Vote for One

SUSAN M. LEESON Incumbent ←

Write In ←

Judge of the Court of Appeals
Position Eight

Vote for One

JACK L. LANDAU Incumbent ←

Write In ←

NONPARTISAN

Sheriff

Vote for One

DAVID S. COOK ←

Write In ←

Benton Soil and Water Conservation District

District Director

Zone 1 Vote for One

JOHN CAPUTO ←

Write In ←

Zone 2 Vote for One

RANDY SELIG ←

Write In ←

Zone 4 Vote for One

STEVEN P. SMITH ←

Write In ←

Zone 5 Vote for One

AVERY JONES ←

Write In ←

At Large Vote for One

GEORGE G. ICE ←

Write In ←

CITY OF ALBANY

Mayor

Vote for One

GLENN KIRKINDALL ←

CHARLES (CHUCK) MCLARAN ←

GENE BELHUMEUR ←

GLEN E. WORDEN ←

Write In ←

Council Member

Ward 1 Vote for One

KENT HICKAM ←

ARLENE L. NEUMAN ←

DALE DUANE MORLAN ←

ALAN C. EDWARDS ←

TERRY A. ZUMWALT ←

Write In ←

CITY OF CORVALLIS
MAYOR
Vote for One

HELEN BERG ←

Write In ←

COUNCILPERSON
Ward 1
Vote for One

PATRICK PETERS ←

Write In ←

COUNCILPERSON
Ward 2
Vote for One

DEBBIE BAKER ←

Write In ←

COUNCILPERSON
Ward 3
Vote for One

TONY HOWELL ←

CATHLIN BENNETT ←

Write In ←

COUNCILPERSON
Ward 4
Vote for One

PAUL CONVERSE ←

Write In ←

COUNCILPERSON
Ward 5
Vote for One

MARY CHRISTIAN ←

DEAN BAUTZ ←

Write In ←

COUNCILPERSON
Ward 6
Vote for One

LU AN CARONE ←

Write In ←

COUNCILPERSON
Ward 7
Vote for One

JAN LANDAU ←

Write In ←

COUNCILPERSON
Ward 8
Vote for One

BETTY GRIFFITHS ←

Write In ←

COUNCILPERSON
Ward 9
Vote for One

LINDA L. SOULIER ←

DEBRA WOOD ←

Write In ←

CITY OF MONROE
MAYOR
Vote for One

DALE W. LaRUE ←

Write In ←

CITY OF PHILOMATH
MAYOR
Vote for One

CHERYL A. McMORRIS ←

Write In ←

COUNCILOR
Vote for Six

MARVIN DURHAM ←

MICHAEL CROCKER ←

CHARLIE CRAWFORD ←

MELINDA L. BLEGEN ←

DEAN A. JENSEN ←

RON STAEHLIN ←

MIKE ZOJONC ←

Write In ←

Write In ←

Write In ←

Write In ←

Write In ←

CITY OF ADAIR
MAYOR
Vote for One

Write In ←

CITY COUNCIL
Vote for Two

Write In ←

Write In ←

MEASURES

MEASURE 02-06
CITY OF CORVALLIS
Referred to the Voters by the Corvallis City Council
Vote "YES" or "NO"

A MEASURE FOR A THREE-YEAR PUBLIC TRANSIT LEVY

QUESTION: Shall Corvallis continue to fund transit operations by a 3-year tax levy beginning July 1, 1995?

QUESTION: This measure continues funding for the Corvallis Transit System. The measure authorizes a serial levy of \$.2061 per \$1,000 assessed value for the City's tax rate each year, for three years beginning 1995-96. The \$.2061 rate shall not increase during the time of the levy. The levy shall be used for operation, maintenance and capital expenditures for the Corvallis Transit System. The estimated amount of money to be raised each year is as follows: 1995-96 estimate \$444,175; 1996-97 estimate \$475,267; 1997-98 estimate \$508,536. This levy would expire June 30, 1998. The estimated tax cost for this measure is an ESTIMATE ONLY based on the best information available from the county assessor at the time of estimate. This tax levy is in excess of the Constitutional 6 percent limitation and in addition to all other levies authorized by Corvallis voters. This tax levy is subject to the limits of Section 11b, Article XI, Oregon Constitution for government purposes.

YES ←

NO ←

ALSEA CEMETERY MAINTENANCE DISTRICT
Referred to the Voters by the District Board
02-07
Vote "YES" or "NO"

PROPOSED TAX BASE; ALSEA CEMETERY MAINTENANCE DISTRICT

QUESTION: Shall the Alsea Cemetery Maintenance District establish a tax base of \$6,000 effective in the 1995-96 fiscal year?

SUMMARY: The Alsea Cemetery Maintenance District needs to raise its tax base to provide more year-round care, and to expand and develop the grounds to the east. Estimated tax is .17¢ per \$1,000 value on assessed value (1993-94) of district. The tax base is subject to the other governmental purposes limit of Section 11 b, Article XI of the Oregon Constitution (Measure 5).

YES ←

NO ←

LINN-BENTON COMMUNITY COLLEGE DISTRICT
Referred to the Voters by the District Board
22-15
Vote "YES" or "NO"

AUTORIZES ISSUANCE OF \$11,649,000 GENERAL OBLIGATION BONDS

QUESTION: Shall the College issue bonds to finance reconstruction and repair of college facilities, handicapped access, capital construction, and improvements?

If the bonds are approved, they will be payable from taxes on property or property ownership that are not subject to the limits of Section 11(b), Article XI of the Oregon Constitution.

EXPLANATION: This measure authorizes the issuance of bonds for college facilities within the college district for the following purposes: reconstruction, renovation, and repair of facilities including roof replacements, required handicapped improvements and other capital construction and improvements and acquisition of furnishings and equipment. These bonds shall mature in ten years from date of issue.

YES ←

NO ←

STATE OF OREGON
REFERRED TO THE PEOPLE BY THE LEGISLATIVE ASSEMBLY
3
Vote "YES" or "NO"

AMENDS CONSTITUTION: CHANGES DEADLINE FOR FILLING VACANCIES AT GENERAL ELECTION

QUESTION: Shall constitutional amendment increase time before general election when elective office vacancy must occur to be filled at that election?

YES ←

NO ←

Continues next page

3 Vote "YES" or "NO"
AMENDS CONSTITUTION:
CREATES VACANCY IF STATE
LEGISLATOR CONVICTED OF
FELONY

QUESTION: Shall state constitution say legislator's felony conviction creates vacancy in office, and persons serving felony sentence are ineligible for legislature?

YES ←

NO ←

Proposed by Initiative Petition

5 Vote "YES" or "NO"
AMENDS CONSTITUTION: BARS
NEW OR INCREASED TAXES
WITHOUT VOTER APPROVAL

QUESTION: Shall Oregon Constitution bar new or increased state and local taxes, certain fees and certain charges without prior voter approval?

YES ←

NO ←

6 Vote "YES" or "NO"
AMENDS CONSTITUTION:
CANDIDATES MAY USE ONLY
CONTRIBUTIONS FROM
DISTRICT RESIDENTS

QUESTION: Shall state constitution permit candidates to use, direct only contributions from district residents, require violators to forfeit office, suffer disqualification?

YES ←

NO ←

7 Vote "YES" or "NO"
AMENDS CONSTITUTION:
GUARANTEES EQUAL
PROTECTION: LISTS
PROHIBITED GROUNDS OF
DISCRIMINATION

QUESTION: Shall Oregon's Constitution forbid government from denying equal protection of laws due to race, color, religion, gender, age, national origin?

YES ←

NO ←

8 Vote "YES" or "NO"
AMENDS CONSTITUTION:
PUBLIC EMPLOYEES PAY PART
OF SALARY FOR PENSION

QUESTION: Shall Constitution require public employees to pay six percent of salary toward pension, bar pension increase from unused sick leave?

YES ←

NO ←

9 Vote "YES" or "NO"
ADOPTS CONTRIBUTION AND
SPENDING LIMITS, OTHER
CAMPAIGN FINANCE LAW
CHANGES

QUESTION: Shall statutes limit contributions by individuals and groups to certain candidates and PACs, adopt optional spending limits for some candidates?

YES ←

NO ←

10 Vote "YES" or "NO"
AMENDS CONSTITUTION:
LEGISLATURE CANNOT
REDUCE VOTER-APPROVED
SENTENCE WITHOUT
2/3 VOTE

QUESTION: Shall the state constitution require 2/3 vote of each house for legislature to reduce a criminal sentence approved by voters?

YES ←

NO ←

11 Vote "YES" or "NO"
MANDATORY SENTENCES FOR
LISTED FELONIES: COVERS
PERSONS 15 AND UP

QUESTION: Shall statute set mandatory sentences for listed felonies; bar early release, leave, or reduced sentence; cover persons 15 and up?

YES ←

NO ←

12 Vote "YES" or "NO"
REPEALS PREVAILING WAGE
RATE REQUIREMENT FOR
WORKERS ON PUBLIC WORKS

QUESTION: Shall Oregon statutes requiring contractors and subcontractors to pay workers on all public works the prevailing wage rate be repealed?

YES ←

NO ←

13 Vote "YES" or "NO"
AMENDS CONSTITUTION:
GOVERNMENTS CANNOT
APPROVE, CREATE
CLASSIFICATIONS BASED ON,
HOMOSEXUALITY

QUESTION: Shall constitution bar governments from creating classifications based on homosexuality or spending public funds in manner expressing approval of homosexuality?

YES ←

NO ←

14 Vote "YES" or "NO"
AMENDS CHEMICAL PROCESS
MINING LAWS: ADDS
REQUIREMENTS,
PROHIBITIONS, STANDARDS,
FEES

QUESTION: Shall chemical process mining laws be amended, adding operating and reclamation requirements, banning certain practices, imposing fees, ending tax credit?

YES ←

NO ←

15 Vote "YES" or "NO"
AMENDS CONSTITUTION:
STATE
MUST MAINTAIN FUNDING FOR
SCHOOLS, COMMUNITY
COLLEGES

QUESTION: Shall constitution set minimum state funding of schools, community colleges based on funds available from listed sources in 1993-95 biennium?

YES ←

NO ←

16 Vote "YES" or "NO"
ALLOWS TERMINALLY ILL
ADULTS TO OBTAIN
PRESCRIPTIONS FOR LETHAL
DRUGS

QUESTION: Shall law allow terminally ill adult patients voluntary informed choice to obtain physician's prescription for drugs to end life?

YES ←

NO ←

17 Vote "YES" or "NO"
AMENDS CONSTITUTION:
REQUIRES STATE PRISON
INMATES TO WORK FULL TIME

QUESTION: Shall constitution require state prison inmates to work or train 40 hours/week; allow public, private sectors to use inmate work?

YES ←

NO ←

18 Vote "YES" or "NO"
BANS HUNTING BEARS WITH
BAIT, HUNTING BEARS,
COUGARS WITH DOGS

QUESTION: Shall statute ban using bait to hunt black bears or using dogs to hunt black bears or cougars, with exceptions?

YES ←

NO ←

19 Vote "YES" or "NO"
AMENDS CONSTITUTION: NO
FREE SPEECH PROTECTION
FOR OBSCENITY, CHILD
PORNOGRAPHY

QUESTION: Shall state constitution say that free speech clause may not be read to ban laws against obscenity, including child pornography?

YES ←

NO ←

20 Vote "YES" or "NO"
AMENDS STATE CONSTITUTION:
"EQUAL TAX" ON TRADE
REPLACES CURRENT TAXES

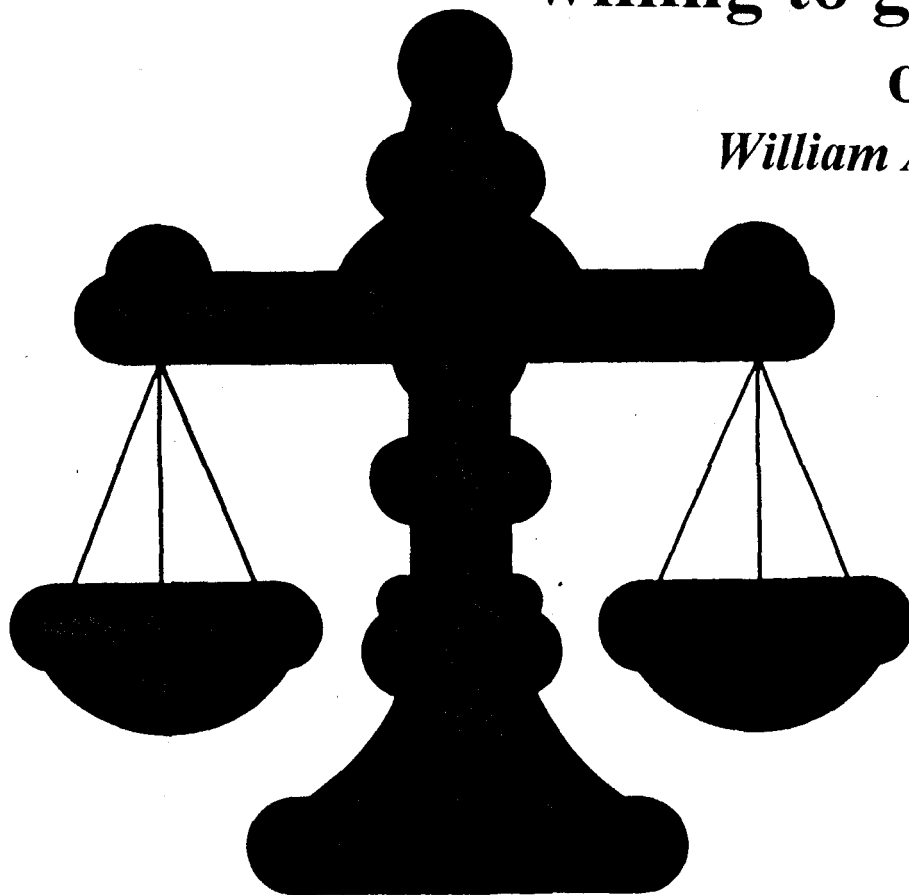
QUESTION: Shall state constitutional tax provisions be repealed, "equal tax" on transfer of property, goods, services replace current state, local taxes?

YES ←

NO ←

**"Liberty is the only thing
you cannot have unless you are
willing to give it to
others."**

William Allen White



**EXPLANATORY STATEMENTS
&
ARGUMENTS**

MEASURE NO. 22-15

Linn-Benton Community College District

Ballot Title:

Authorizes Issuance of \$11,649,000 General Obligation Bonds.

QUESTION: Shall the College issue bonds to finance reconstruction and repair of college facilities, handicapped access, capital construction, and improvements?

If the bonds are approved, they will be payable from taxes on property or property ownership that are not subject to the limits of Section 11(b), Article XI of the Oregon Constitution.

EXPLANATION: This measure authorizes the issuance of bonds for college facilities within the college district for the following purposes: reconstruction, renovation, and repair of facilities including roof replacements, required handicapped improvements and other capital construction and improvements and acquisition of furnishings and equipment. These bonds shall mature in ten years from date of issue.

Submitted by:
Shirley A. Buttenhoff
Chair,
Linn-Benton Community College District

ARGUMENT IN FAVOR:

"This is clearly a time in the mid-valley when public improvements have to be made to a number of facilities. . . . the bond issues being proposed by Linn-Benton Community College . . . are responsible proposals." — **Albany Democrat-Herald.**

"We in Linn and Benton Counties are fortunate to have one of Oregon's best community colleges to help meet the recurring need for education of workers. . . . But facilities wear out, equipment becomes obsolete, and citizens with disabilities need access to the training carried out on our campuses. . . . If new monies are not provided, dollars must be taken from educational programs and the quality and scope of needed training will be damaged." — **John Byrne, President, Oregon State University.**

"Linn-Benton Community College's proposal to raise tuition by 14.3 percent comes as no surprise, considering the fallout of Measure 5 on state aid. And even after the increase, LBCC courses provide a true educational bargain." — **Albany Democrat-Herald.**

"Probably no issue has gone so unnoticed since 1980 as the failure to be able to fund the maintenance of all of our state facilities. The inability to upgrade classroom equipment is particularly devastating." — **Tony Van Vliet, State Senator.**

"If the bond issue is defeated, the college will lose useful facilities and face squeezing out would-be students to pay for vital repairs from annual budgets. . . . LBCC provides excellent value for taxpayers' money." — **Corvallis Gazette-Times**

"Residents of the two counties have a large investment in the community college that serves 26,000 persons each year. That investment is measurable in terms of dollars, but it's perhaps even more important when one talks in terms of lives impacted in a positive way because of LBCC. . . . The bond issue is an investment in our entire county and makes good sense." — **Sweet Home New Era.**

We urge voters to say "yes" on measure 22-15 and authorize bonds for Linn-Benton Community College. — **"Yes" for LBCC Committee.**

Submitted by:
Richard Running
"Yes" for LBCC Committee

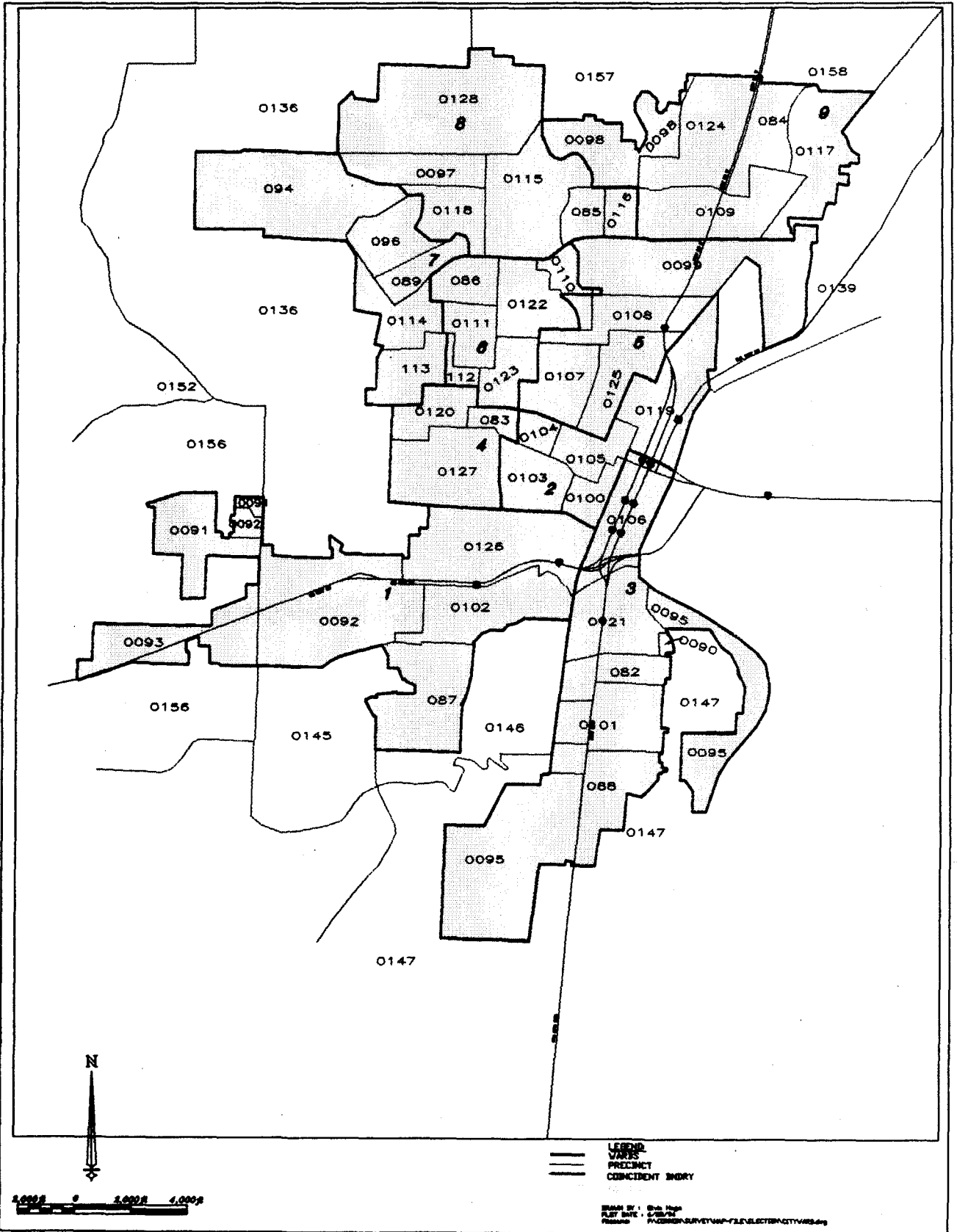
MEASURE NO. 02-06	MEASURE NO. 02-07
City of Corvallis	Alsea Cemetery Maintenance Dist.
Ballot Title:	Ballot Title:
<p>Measure for a Three-Year Public Transit Levy</p> <p>QUESTION: Shall Corvallis continue to fund transit operations by a 3-year tax levy beginning July 1, 1995?</p> <p>SUMMARY: This measure continues funding for the Corvallis Transit System. The measure authorizes a serial levy of \$.2061 per \$1,000 assessed value for the City's tax rate each year, for three years beginning 1995-96. The \$.2061 rate shall not increase during the time of the levy. The levy shall be used for operation, maintenance and capital expenditures for the Corvallis Transit System. The estimated amount of money to be raised each year is as follows: 1995-96 estimate \$444,175; 1996-97 estimate \$475,267; 1997-98 estimate \$508,536. This levy would expire June 30, 1998. The estimated tax cost for this measure is an ESTIMATE ONLY based on the best information available from the county assessor at the time of estimate. This tax levy is in excess of the Constitutional 6 percent limitation and in addition to all other levies authorized by Corvallis voters. This tax levy is subject to the limits of Section 11b, Article XI, Oregon Constitution for government purposes.</p>	<p>Proposed Tax Base; Alsea Cemetery Maintenance District.</p> <p>QUESTION: Shall the Alsea Cemetery Maintenance District establish a tax base of \$6000.00 effective in the 1995-96 fiscal year?</p> <p>SUMMARY: The Alsea Cemetery Maintenance District needs to raise its tax base to provide more year-round care, and to expand and develop the grounds to the east. Estimated tax is .17¢ per 1,000 value on assessed value (1993-94) of district. The tax base is subject to the other governmental purposes limit of Section 11b, Article XI of the Oregon Constitution (Measure 5).</p>
<p>Submitted by: M. Sue Mariner City Recorder City of Corvallis</p> <p>No arguments in favor of or opposed to this measure were filed.</p>	<p>Submitted by: Harley J. Hendrix Chairman of the Board Alsea Cemetery Maintenance District</p> <p>No arguments in favor of or opposed to this measure were filed.</p>

***“Let’s talk sense to
the American people.”***
Adlai Stevenson

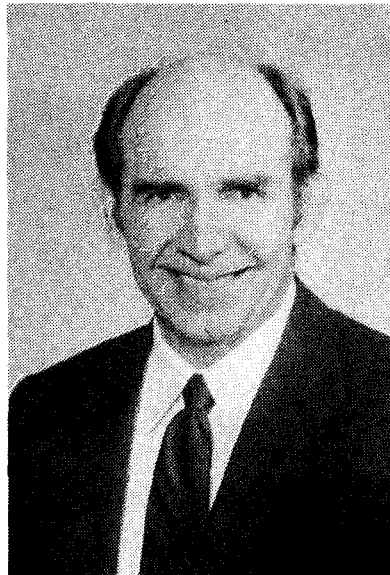
**C
A
N
D
I
D
A
T
E
S**



Benton County City of Corvallis Precinct & Ward Map



Benton County County Commissioner



KENT DANIELS

Democrat

OCCUPATION:
County
Commissioner

**OCCUPATIONAL
BACKGROUND:**
Small business
owner; 10 yrs. Assis-
tant Director, OSU
International Re-
search & Develop-
ment; Peace Corps

**EDUCATIONAL
BACKGROUND:**
B.A., Ohio State
University

PRIOR GOVERNMENTAL EXPERIENCE:

Benton County Commissioner;
Corvallis City Council (2 terms)

ORGANIZATIONS:

Rotary, Chamber of Commerce, Council for Social Services, League of Women Voters, Community Corrections Advisory Committee, Benton County Historical Society, American Association of Retired Persons

KENT DANIELS: Leadership

Kent's the only candidate with proven leadership experience to help us meet the challenges facing our communities:

- Chair, Board of Commissioners
- Chair, Community Services Consortium Governing Board
- Chair, Association of Oregon Counties Health Insurance Trust
- Vice Chair, Habitat for Humanity
- Board of Directors, Da Vinci Days
- Board of Advisors, Greenbelt Land Trust
- Advisory Board, Leadership Corvallis
- Oregon High Speed Rail Task Force
- Forest Service Provincial Executive Committee

KENT DANIELS: Efficiency

"Kent Daniels has earned widespread plaudits for his role in improving county administration." (*Gazette-Times*, 5/6/94)

- clearly defined fiscal policies
- improved customer service
- quality-based management
- county long-range strategic plan
- stretching tax dollars through private-public partnerships, use of volunteers, and energetic pursuit of grant money

KENT DANIELS: Action

Kent's tackled important issues to improve our quality of life:

- stable library funding
- cooperative programs that share local resources — Willamette Criminal Justice Council, Yes for Kids!
- strong community economic development programs
- 4 new sheriff's deputies for rural areas, 50% more jail space
- \$1.3 million in housing rehab grants for Alsea and Philomath
- \$1.8 million in grants for trails, bikepaths, & 2 new parks

"We have to build a safe, secure future for all our children. We need to continue seeking new ways to provide the services citizens need. And we must plan for growth to both improve our quality of life and maintain a robust economy."

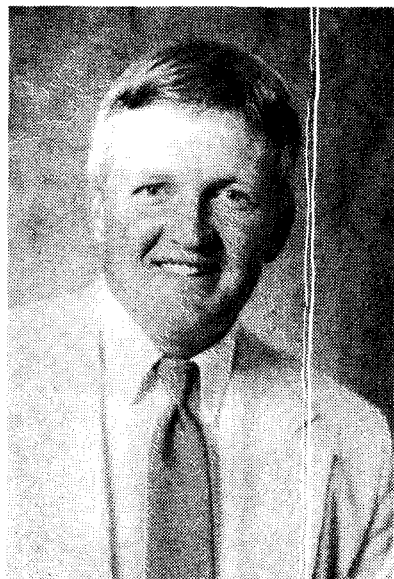
Kent Daniels, County Commissioner

KENT DANIELS

Proven leadership for Benton County's future

This information furnished by Daniels for Commissioner Committee and is printed exactly as submitted.

Benton County County Commissioner



**RUSS
SAPP**

REPUBLICAN

OCCUPATION:
Manager - Sapp Bros.
Logging - 22 years

**EDUCATIONAL
BACKGROUND:**
Alsea and Philomath
schools - 12 years;
O.S.U. - W.O.S.C.

GOVERNMENTAL EXPERIENCE: Alsea School Board member -
elected - volunteer

We, as individual voters, either use the election process or lose our access to the government process.

It is not enough simply to vote, ours must be an informed vote, based on knowledge of the issues and candidates. A candidate who uses slogans and time-worn political rhetoric, has nothing else to offer.

We all want 'effective government'. We all want 'a better life for our children' and we're all 'tough on crime.' A candidate who makes those statements tells you nothing of himself.

Candidates list their experience to show their qualification for office and hope you never consider that experience is indeed a poor substitute for honesty and integrity. They also hope you never confuse political experience with lifetime political job security.

The founding fathers who wrote our Constitution never intended that experience be a requirement for office. They probably realized political experience is sometimes more useful to the abuse rather than to the use of power.

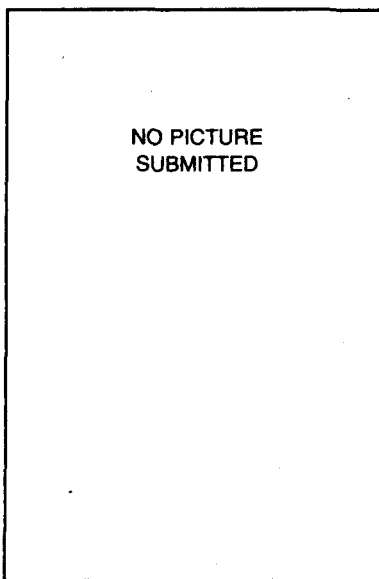
I'm not a politician and although I'm a newcomer to politics, I'm a fifth generation Benton County resident. My experience comes from that segment of our society that provides government with the money it spends. My segment of society is the target of the rules and regulations our government mandates. In those things, I am experienced.

I have a vision of county government. I see a government that represents and welcomes input from all its citizens. My vision includes greater cooperation with other governments to consolidate services, materials and equipment and to use the savings to fund other needs unique to our community. Since the Board of Commissioners serves as both the legislative and executive branch, I envision a system of checks and balances to ensure accountability.

I will work to achieve that vision.

This information furnished by Russ Sapp and is printed exactly as submitted.

Benton County Sheriff



**DAVID S.
COOK**

NON-PARTISAN

OCCUPATION:
Benton County
Sheriff

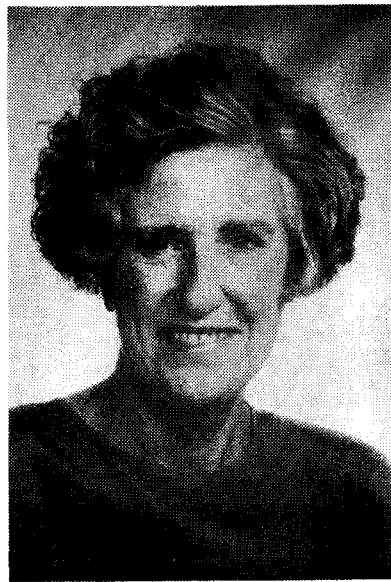
**OCCUPATIONAL
BACKGROUND:**
Benton County
Sheriff's Office
1970-74, 1981 to
present.
Owner/Manager Ace
Builders Center,
San Leandro, CA
1975-1981

**EDUCATIONAL
BACKGROUND:**
Oregon State
University, B.S.,
1969

GOVERNMENTAL EXPERIENCE: Governor's Drug & Violent
Crime Policy Board; Oregon Community Corrections Advisory Board;
Board on Public Safety Standards & Training

This information furnished by David S. Cook and is printed exactly as submitted.

City of Corvallis Mayor



HELEN BERG

OCCUPATION:
Retired

**OCCUPATIONAL
BACKGROUND:**
Director, Oregon
State University
Survey Research
Center 1986-1993

**EDUCATIONAL
BACKGROUND:**
University of Wisconsin,
BA 1953, mathematics;
Oregon State
University, MS 1973,
statistics

PRIOR GOVERNMENTAL EXPERIENCE: Corvallis City Council, Ward 7, 1991 - present; Council President, 1993 - present

Corvallis is more than a beautiful place, it is a community. People reason together and work hard for the common good. There is a special lasting quality about our city.

The Corvallis High School class of 1944 recently had a reunion. I am told that the people who had not been back to Corvallis in 50 years were amazed at the changes — educational, cultural, recreational, structural, commercial, industrial, and residential expansion. And yet, they said, it's still Corvallis. It still feels the same. My vision is that people returning in 2004 or 2024 will say, "Look at all these amazing changes, and yet, it's still Corvallis."

This ability to grow and yet maintain the quality of our community comes from informed citizens insisting on responsive government. It's not that we don't have problems. Like other cities we have difficulties with traffic, housing, discrimination, pollution, poverty and crime. We remain true to our aspirations, however. We keep working on the stubborn problems. We reason together and build on our successes. The Corvallis City Council attempts to provide the public with information. The Council seeks a broad range of citizen views and subsequently acts on recommendations from individual citizens, neighborhood meetings, public hearings, advisory boards, commissions and task forces. One person with a good idea has often made a difference in Corvallis.

The power of public involvement is that it leads to enlightened civic goals and fair, balanced funding of public services and facilities. The primary responsibility of the Mayor is to represent Corvallis' traditions and evolving goals, reliably and constructively, both within and on behalf of the community.

I ask for your vote on November 8.

This information supplied by Helen Berg and is printed exactly as submitted.

City of Corvallis City Council - Ward 1

PATRICK PETERS

OCCUPATION:
Human Resources Assistant - Childrens Farm Home

OCCUPATIONAL BACKGROUND:
Retail Telemarketer, Customer Service Rep - Corvallis Gazette-Times
Legislative Intern - Senator Jim Hill
Canvasser - Oregon State Public Interest Research Group (OSPIRG)

EDUCATIONAL BACKGROUND:
Junior at OSU

PRIOR GOVERNMENTAL EXPERIENCE:
Democratic Precinct Committee person

This information submitted by Patrick Peters and is printed exactly as submitted.

City Council - Ward 2

DEBBIE BAKER

OCCUPATION:
Newspaper Advertising Sales

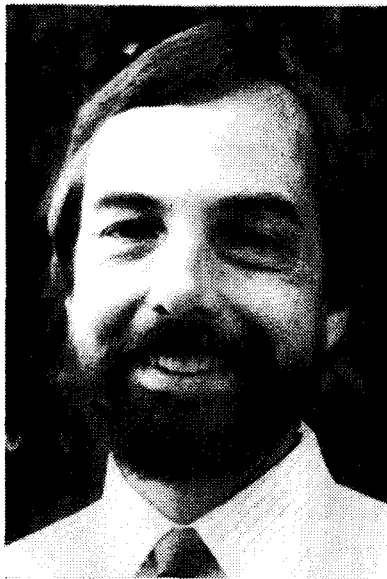
OCCUPATIONAL BACKGROUND:
Waitress/bartender

EDUCATIONAL BACKGROUND:
Lincoln Grade School
Corvallis High School
OSU - completed all but 21 hours of business degree

PRIOR GOVERNMENTAL EXPERIENCE:
City Council Ward 2, 1993-94

This information furnished by Debbie Baker and is printed exactly as submitted.

City of Corvallis City Council - Ward 3



TONY HOWELL

OCCUPATION:
Clinical supervisor,
Linn County Alcohol
& Drug Treatment
Program

**OCCUPATIONAL
BACKGROUND:**
Counselor, research
assistant, grocery
clerk

EDUCATIONAL BACKGROUND:
Master of Social Work, University of Michigan; B.A., U.C.L.A.

PRIOR GOVERNMENTAL EXPERIENCE:
Corvallis City Council, 1993-94; Corvallis Budget Commission,
1990-94.

COMMUNITY EXPERIENCE:
Past Board President, Community Outreach; Past Board Member,
Corvallis Neighborhood Housing Services; Founding Member, Citi-
zens for Sound Planning; South Corvallis Gateway Project; Commu-
nity Leadership Award, Sierra Club, 1989.

I have enjoyed serving you for the past two years on the City Council, and hope that you will allow me to continue representing your interests and concerns. These are some of my thoughts on how we should approach the various issues facing Corvallis:

Citizen Involvement

Active citizen participation in our local government is a crucial factor in the quality of the decisions that our community makes and in how successfully those decisions are implemented. I will continue to advocate for involving citizens early, in the formative stages of projects and making policies or decisions. The involvement of Ward 3 residents will be especially important in helping us guide Downtown and Riverfront improvements, and in the upcoming South Corvallis master planning process.

Managing Growth

As long as Corvallis remains a desirable place to live and work, our city will continue to encounter pressures to grow. We need to increase our efforts to plan in advance for orderly growth that pays for itself, maintains neighborhood integrity, provides for alternative transportation, and protects the natural resources and amenities that make Corvallis attractive and economically healthy.

Building a Sustainable Future

One measure of a healthy community is how well we keep our obligations to those who come after us. Our decisions need to maintain a long-range perspective that does not defer costs — economic, social, or environmental — on to our children.

This information furnished by Tony Howell and is printed exactly as submitted.

City of Corvallis City Council - Ward 3

CATHLIN D. BENNETT

OCCUPATION
Self employed. McMenamins staff, One World Internetworking, Inc.

OCCUPATIONAL BACKGROUND:
City of Grants Pass Finance Department
City of Grants Pass (Planning Department) Community Development Dept.

EDUCATIONAL BACKGROUND:
BA Political Science, University of Oregon, Magna Cum Laude

PRIOR GOVERNMENTAL EXPERIENCE:
City of Grants Pass (Planning) Community Development Dept.
City of Grants Pass Finance Dept.

This information furnished by Cathlin D. Bennett and is printed exactly as submitted.

City of Corvallis City Council - Ward 4

PAUL CONVERSE

OCCUPATION:
Owner - Rheumatism Romania - a service taking arthritics for treatment with Lake Techirghiel mud in Mangolia, Romania on the Black Sea Coast.

OCCUPATIONAL BACKGROUND:
1. Country Manager - Romania 1993-94 - US Foreign Aid in Agriculture; 2. Semitrailer - sales manager - Western U.S.; 3. Licensed Practical Nurse - Prineville Hospital; 4 Executive Director - Consumer Credit Counseling, Bend, OR; 5.6. Home remodeling, hay hauling - Benton County; 7. 10 years at Agripac here in Corvallis; 8. Production Manager Del Monte - Chiguik, Alaska.

EDUCATIONAL BACKGROUND:
1. Corvallis High School; 2. Oregon State University - B/S Agricultural Engineering Technology; 3. University of Oregon - MBA Finance; 4. Central Oregon Community College - LPN - Nursing.

PRIOR GOVERNMENTAL EXPERIENCE:
Budget officer & Board member - Central Oregon People's Utility District.

This information furnished by Paul Converse and is printed exactly as submitted.

City of Corvallis
City Council - Ward 5

MARY A. CHRISTIAN

OCCUPATION:

Student - work on campus as secretary

OCCUPATIONAL BACKGROUND:

Student employee at Oregon State University; Director ASOSU Saferide; OSU Sexual Assault Program Coordinator; Intern: American Civil Liberties Union; Volunteer: Center Against Rape & Domestic Violence; Volunteer: President Amnesty International, OSU, Disabled Students Organization, Students for Choice, Saferide Foundation; Served on numerous ASOSU Committees.

EDUCATIONAL BACKGROUND:

Portland State University; Linn Benton Community College; Oregon State University, B.S. in Psychology; currently attending OSU as MAIS student, graduation date: June 1995.

PRIOR GOVERNMENTAL EXPERIENCE:

None

Nominated: Oregon State Board of Higher Education.

City of Corvallis
City Council - Ward 5



**DEAN
BAUTZ**

OCCUPATION:

Chemist 1991 to present

**OCCUPATIONAL
BACKGROUND:**

Instrumentation Specialist 1990-1991; Chemistry Research Fellow 1989-1990; Research and Teaching Asst. Dept. of Chemistry OSU 1983-1989

EDUCATIONAL BACKGROUND:

B. A. in Chemistry 1982 State University of New York at Potsdam

Corvallis is currently experiencing a strong period of growth. To insure the high level of liveability that you and I and our neighbors enjoy our city will need leaders that have both the compassion to listen to the needs of the individual, and the strength and insight to enact positive and constructive change. I am that kind of individual and the best candidate to represent Ward 5.

Since I am a citizen politician and not a professional politician, I won't make promises I can't keep. As your city councilor, I want to make your concerns and your ideas the driving force in how our community changes. By taking an active role in our community, we invest in the future not only for ourselves and our families but for those who will live here someday.

My strong desire is to insure that as Corvallis grows the liveability of our community does not decline. As our city grows our public utilities, police and fire safety, and our parks and recreational facilities must grow and adapt to meet our changing needs. As your city councilor I will make certain the changes that Corvallis undertakes are positive, constructive and fiscally sound and will enhance our already great community.

I ask you to elect me, Dean Bautz, as Corvallis City Councilor of Ward 5 in November as an investment in Corvallis' future.

This information furnished by the Benton County Citizens for Justice and is printed exactly as submitted.

City of Corvallis
City Council - Ward 6

City of Corvallis
City Council - Ward 7

NO PICTURE
SUBMITTED

**LU AN
CARONE**

OCCUPATION:
Office Manager -
Benton County

**OCCUPATIONAL
BACKGROUND:**
Corvallis Boys and
Girls Club, Secretary;
Accufab Systems,
Inc., Secretary

**EDUCATIONAL
BACKGROUND:**
Linn Benton Com-
munity College;
Leadership Corvallis

**PRIOR
GOVERNMENTAL
EXPERIENCE:**
Advisory Board of the
Parent Enhancement
Program

Lu An is an eighteen year resident who is committed to maintaining the strong sense of community that is an essential part of the quality of life in Corvallis. She has shown her dedication to public involvement through her continuing volunteer work in the community while raising and supporting a family.

Lu An has been an active volunteer in:

- Parent Enhancement Program, Mentor for Teenage Mother, Advisory Committee Member
- Benton County Committee for the Prevention of Child Abuse, Former Board Member
- United Way, Campaign Coordinator for Benton County Employees, United Way Allocations Committee
- Boy Scouts of America, Scout Leader
- DaVinci Days Volunteer

"Corvallis is facing a time of increasing growth pressure. We must effectively manage this growth to keep the quality of life that we expect in Corvallis. This must be done through competent, efficient management of our natural and human resources. Broad-based community planning and on-going public involvement are essential to ensure that we retain the character of the City."

"All of us must be willing to participate in insuring a safe, healthy, creative environment for our children. This can only be done through a community-wide commitment to providing the necessary resources. This will require active coordination of programs between the city, county, school district and children and family support services organizations. I will work towards efficient provision of these necessary services through the City Council and the volunteer organizations that I am a part of."

This information furnished by Lu An Carone and is printed exactly as submitted.

JANET A. LANDAU

OCCUPATION:

Homemaker
Volunteer - Corvallis Planning Commission, Benton County Citizen's Review Board

OCCUPATIONAL BACKGROUND:

Program Director - Court Appointed Special Advocate (CASA) Program
Paralegal, Benton County District Attorneys office
Park Commissioner, Corvallis Park & Recreation Advisory Board
Member, Corvallis Riverfront Enhancement Task Force

EDUCATIONAL BACKGROUND:

Graduate, Oregon State University - BS, History
Graduate, Corvallis High School Class of '66

PRIOR GOVERNMENTAL EXPERIENCE:

Commissioner, Corvallis Park & Recreation Advisory Board
Member, Corvallis Riverfront Enhancement Task Force
Corvallis Planning Commission

This information furnished by Janet A. Landau and is printed exactly as submitted.

City of Corvallis City Council - Ward 8



BETTY GRIFFITHS

OCCUPATION:
Program Manager,
Linn County Alcohol
& Drug

**OCCUPATIONAL
BACKGROUND:**
Administrator,
Consultant, Coun-
selor, Teacher

**EDUCATIONAL
BACKGROUND:**
James Madison Uni-
versity. B.S. 1962
Psychology & History
OSU, Ed.M. 1971,
Guidance & Coun-
seling

PRIOR GOVERNMENTAL EXPERIENCE:

Corvallis City Council 1992-1994: Administrative Services Com-
mittee, member and rotating chair; liaison to West Corvallis Planning
Project Task Force, Watershed Commission and Benton Government
Committee.

COMMUNITY SERVICE:

Parent Advisory Board, LBCC 1987-90;
Board of Directors, Corvallis Community Day Care 1977-81;
Board of Directors, Community Outreach 1975-77

FAMILY: Betty Griffiths has lived in Corvallis for 26 years with her
husband and son. She is a homeowner and committed to maintaining
the quality of life in Corvallis.

- BETTY GRIFFITHS listens to neighborhood concerns and will work
with all to find solutions
- BETTY GRIFFITHS has over 14 years of administrative, budgeting,
planning and consulting experience
- BETTY GRIFFITHS understands city issues

BETTY will work to:

- Implement the Riverfront Enhancement Task Force recommenda-
tions for public and private development of the riverfront and improv-
ement of the connection between downtown and the riverfront.
- Support long term planning and growth management policies includ-
ing a continued commitment to the Comprehensive Plan and the Land
Development Code.
- Develop a long range plan and funding for open space acquisition
in cooperation with the private sector.
- Increase intergovernmental cooperation in the delivery of services.
- Continue development of alternatives to cars: more bike paths, trails,
increase use of Corvallis Transit.
- Continue the tradition in Corvallis of citizen involvement in decision
making.

This information furnished by Betty Griffiths for City Council Commit-
tee and is printed exactly as submitted.

City of Corvallis City Council - Ward 9

LINDA L. SOULIER

OCCUPATION:
Small business owner (7-Eleven)

OCCUPATIONAL BACKGROUND:
7-Eleven 16 yrs
Manager retail shop 2 yrs
Co-owner retail shop 2 yrs
Sales Representative 5 yrs

EDUCATIONAL BACKGROUND:
West Leyden High School - 12 degree

PRIOR GOVERNMENTAL EXPERIENCE:
Current Corvallis City Councilor - Ward 9

This information furnished by Linda L. Soulier and is printed exactly
as submitted.

City of Corvallis City Council - Ward 9

DEBRA (DEBBIE) A. WOOD

OCCUPATION:
Homemaker

OCCUPATIONAL BACKGROUND:
US Air Force (Regular, Reserves, Oregon Air Guard)

EDUCATIONAL BACKGROUND:
Cottage Grove High School, Cottage Grove, OR Graduated 1977
Linn-Benton Community College - Dental Assisting Certificate 1987
Associate of General Studies 1989
Oregon State University - Bachelor of Science in Political Science
with a minor in Sociology - 1994

PRIOR GOVERNMENTAL EXPERIENCE:
None

This information furnished by Debra (Debbie) A. Wood and is printed
exactly as submitted.

**City of Albany
Mayor**

CHARLES (CHUCK) McLARAN

OCCUPATION:

Customer Service Representative for Communication Graphics Group, Albany, OR

OCCUPATIONAL BACKGROUND:

U.S. Army;
School Teacher;
Special Agent/Supervisor - FBI;
Part-time investigator - Pacific NW Investigations, Albany, OR

EDUCATIONAL BACKGROUND:

San Jacinto High School, Houston, Texas - grad.;
Texas A&M University, College Station, Texas - BA

PRIOR GOVERNMENTAL EXPERIENCE:

Planning Commission - City of Albany, OR.

This information furnished by Charles (Chuck) McLaran and is printed exactly as submitted.

**City of Albany
Mayor**

GLEN E. WORDEN

OCCUPATION:

Pres., Worden Sales and Marketing, a small food brokerage firm

OCCUPATIONAL BACKGROUND:

U.S. Army;
Cascade Meat Company, Salem, Oregon;
Previous owner Verboort Sausage Company;
Previous owner several Deli shops throughout Oregon;
Previous owner restaurant, Yamhill Market Place, Portland, Oregon;
Sales manager, Old Trapper, Forest Grove, Oregon

EDUCATIONAL BACKGROUND:

Dayton High School, 1949

PRIOR GOVERNMENTAL EXPERIENCE:

Tax payer for over 45 years.

Born in Salem, Oregon. Lived in Albany over 30 years. Own my home and am a City taxpayer.

This information furnished by Glen E. Worden and is printed exactly as submitted.

**City of Albany
Mayor**

EUGENE BELHUMEUR

OCCUPATION:

Retail - Management, Snooky's - paid

OCCUPATIONAL BACKGROUND:

Sales - Management, Capitol Recording Co., Canada Dry Corp.,
Western Board of Adjusters, Self (wholesale gem dealer), French's Jewelers, Snooky's.

EDUCATIONAL BACKGROUND:

Saint Philips Elem., K-8;
Don Bosco Tech, 9-11;
Pasadena City College (part-time), none.

PRIOR GOVERNMENTAL EXPERIENCE:

G.A.P.S. Zone 1 committee (elected);
Mayor, City of Albany (elected).

This information furnished by Gene Belhumeur and is printed exactly as submitted.

**City of Albany
Mayor**

GLENN KIRKINDALL

OCCUPATION:

Courtesy Clerk, Albertsons, 1177 Waverly, Albany, OR 97321

OCCUPATIONAL BACKGROUND:

Cleanup (Bakery & Meat dept.), Albertsons, 1177 Waverly,
Albany, OR 97321;
Janitor Crew, Service Master, Corvallis, OR 97330

EDUCATIONAL BACKGROUND:

Part time course at Linn Benton Community College (English & Sign language); part-time courses at Portland State University (Geology & Chemistry); Dept. of Geology, Oregon State University (Senior standing); courses at World Culture Institute (Japanese).

This information furnished by Glenn Kirkindall and is printed exactly as submitted.

<p>City of Albany Councilor - Ward I</p>	<p>City of Albany Councilor - Ward I</p>
<p>ALAN C. EDWARDS</p> <p>OCCUPATION: No information supplied</p> <p>OCCUPATIONAL BACKGROUND: Nuclear Power Plant Mechanic, Gas Turbines System's Mechanic during 5½ years U.S. Navy.</p> <p>EDUCATIONAL BACKGROUND: West Albany High School (Graduated); University of Arizona; University of Maryland; Central Texas College.</p> <p>PRIOR GOVERNMENTAL EXPERIENCE: None</p> <p>This information furnished by Alan C. Edwards and is printed exactly as submitted.</p>	<p>ARLENE L. NEUMAN</p> <p>OCCUPATION: Motor route driver for the Democrat Herald</p> <p>OCCUPATIONAL BACKGROUND: Teacher; owner/manager, Mid-Valley Day Care Center; school bus driver</p> <p>EDUCATIONAL BACKGROUND: B.S. degree, Oregon State University, Education.</p> <p>This information furnished by Arlene L. Neuman and is printed exactly as submitted.</p>
<p>City of Albany Councilor - Ward I</p>	<p>City of Albany Councilor - Ward I</p>
<p>TERRY A. ZUMWALT</p> <p>OCCUPATION: Zoom Motors Inc., 4269 Santiam Hwy., Albany, OR 97321</p> <p>OCCUPATIONAL BACKGROUND: Zoom Motors Inc., 4269 Santiam Hwy., Albany, OR 97321</p> <p>EDUCATIONAL BACKGROUND: South Albany H.S. Graduate (1980)</p> <p>PRIOR GOVERNMENTAL EXPERIENCE: None</p> <p>This information furnished by Terry A. Zumwalt and is printed exactly as submitted.</p>	<p>DALE DUANE MORLAN</p> <p>OCCUPATION: Account Executive, Sanderson Safety Supply, 1101 S.E. 3rd, Portland, OR</p> <p>OCCUPATIONAL BACKGROUND: Industrial Supply Sales; District Manager (Industrial Supplies)</p> <p>EDUCATIONAL BACKGROUND: North Albany Grade School - Albany; Albany Union High School - Albany - Diploma; Multnomah College - Portland - 2 years - Political Science.</p> <p>PRIOR GOVERNMENTAL EXPERIENCE: None</p> <p>This information furnished by Dale Duane Morlan and is printed exactly as submitted.</p>
<p>City of Albany Councilor - Ward I</p>	
<p>KENT HICKAM</p> <p>OCCUPATION: Attorney</p> <p>EDUCATIONAL BACKGROUND: Stanford University - B.A.; Willamette University - J.D., M.M.</p> <p>PRIOR GOVERNMENTAL EXPERIENCE: Linn County Commission on Children and Families; Linn County Children and Youth Services Commission.</p> <p>This information furnished by Kent Hickam and is printed exactly as submitted.</p>	

**City of Philomath
Mayor**

CHERYL A. McMORRIS

OCCUPATION:

Cashier II at Oregon State University

OCCUPATIONAL BACKGROUND:

- 1) Banking Cashier - Vault Cashier - New Accounts Rep 12 yrs
- 2) Cashier - Grocery
- 3) Process - Cheese

EDUCATIONAL BACKGROUND:

2 yr. at Fresno Jr. College
1 term Portland State Univ.
LBCC continuous intervals
Will be attending Oregon State Univ. this Fall, 1 class

PRIOR GOVERNMENTAL EXPERIENCE:

Philomath City Council 4 yrs.

This information furnished by Cheryl A. McMorris and is printed exactly as submitted.

**City of Philomath
Councilor**

RONALD P. STAEHLIN

OCCUPATION:

Civil Engineer - Paid
President of Southwood Engineering Corp.

OCCUPATIONAL BACKGROUND:

Civil Engineer - Paid
CH2M Hill Consulting Engineers
Civil Engineer - Paid
ODOT - Bridge Division

EDUCATIONAL BACKGROUND:

Illinois Institute of Technology
Bachelor's Degree

PRIOR GOVERNMENTAL EXPERIENCE:

Elected to Philomath City Council in 1988, 1990, & 1992

This information furnished by Ronald P. Staehlin and is printed exactly as submitted.

**City of Philomath
Councilor**

MARVIN DURHAM

OCCUPATION:

Retired

OCCUPATIONAL BACKGROUND:

Foreign Student Advisor / Assoc. Prof. International Education,
Oregon State University, Corvallis, Or.
Assoc. Director Inst. of Student Interchange East-West Center, Honolulu, Ha.
Asst. Dean Arts & Science U.V.M., Burlington, Vt.
Dean of Students, Wenatchee Valley College, Wenatchee, Wa.

EDUCATIONAL BACKGROUND:

PhD., MA, Fletcher School of Law and Diplomacy
B.S. University of Washington

PRIOR GOVERNMENTAL EXPERIENCE:

Councilor, Philomath

This information furnished by Marvin Durham and is printed exactly as submitted.

**City of Philomath
Councilor**

MIKE ZOJONC

OCCUPATION:

George-Pacific Corp. - Philomath Operations
Plant Supt.

OCCUPATIONAL BACKGROUND:

This information not furnished.

EDUCATIONAL BACKGROUND:

Oakridge High School - 12 yrs.
Lane Community College - 1 yr.

PRIOR GOVERNMENTAL EXPERIENCE:

2 yrs. Philomath City Council

This information furnished by Mike Zojonc and is printed exactly as submitted.

**City of Philomath
Councilor**

CHARLES L. CRAWFORD

OCCUPATION:

Electrical Inspector
Employer: Mortier Engineering;
1245 Pearl Street; Eugene, Oregon 97440

OCCUPATIONAL BACKGROUND:

Vice President, Field Operations. Employer: John D. Murphy & Associates, Inc.
Construction Engineering Services. 3119 Lavina Drive, Forest Grove, Oregon 97116-1045
Vice President, Field Operations. Employer: ACT Construction, Inc., 2830 Ferry Street, Albany, Oregon 97330
Assistant Business Manager, IBEW Local 280, 2659 Commercial SE, Salem, Oregon 97302
Electrician for 35 years.

EDUCATIONAL BACKGROUND:

High School: Los Alamos, New Mexico
Apprentice program: San Diego, California

PRIOR GOVERNMENTAL EXPERIENCE:

Summit Cemetery Association
Benton County Zoning Commission

This information furnished by Charles L. Crawford and is printed exactly as submitted.

**City of Philomath
Councilor**

MELINDA L. BLEGEN

OCCUPATION:

Manager

OCCUPATIONAL BACKGROUND:

Bartender
Waitress
Cook

EDUCATIONAL BACKGROUND:

High School Diploma
3 yrs. - LBCC

PRIOR GOVERNMENTAL EXPERIENCE:

None

This information furnished by Melinda L. Blegen and is printed exactly as submitted.

**City of Philomath
Councilor**

MICHAEL G. CROCKER

OCCUPATION:

Teacher, Philomath High School

OCCUPATIONAL BACKGROUND:

Carnation Pet Food
Leopold & Stevens

EDUCATIONAL BACKGROUND:

Hillsboro High School
Portland Community College
Oregon State University

PRIOR GOVERNMENTAL EXPERIENCE:

None

This information furnished by Michael G. Crocker and is printed exactly as submitted.

**City of Philomath
Councilor**

DEAN A. JENSEN

OCCUPATION:

Equipment Technician at Hewlett-Packard, Corvallis

OCCUPATIONAL BACKGROUND:

Since 1982 several positions within the electronics and equipment maintenance fields.

EDUCATIONAL BACKGROUND:

High school; graduate 1978 from Grafton, N. Dakota
Trade school graduate 1978 in building trades, Grafton, N. Dakota
Graduated with honors from Missouri Institute of Technology, 1982, Kansas City, Mo.

PRIOR GOVERNMENTAL EXPERIENCE:

None

This information furnished by Dean A. Jensen and is printed exactly as submitted.

**City of Monroe
Mayor**

**City of Monroe
Council Member**

DALE W. LARUE

OCCUPATION:
Retired, Unpaid

OCCUPATIONAL BACKGROUND:
Plumbing Business, Paid
Minister, Paid

EDUCATIONAL BACKGROUND:
Puget Sound Christian College B.R.E.
Emmanuel School of Religion M.R.E.

PRIOR GOVERNMENTAL EXPERIENCE:
2 yrs. Monroe City Council, Elected
2 yrs. Monroe City Mayor, Elected.

This information furnished by Dale W. LaRue and is printed exactly as submitted.

LARRY W. PAYNE

OCCUPATION:
No Information Provided

OCCUPATIONAL BACKGROUND:
No Information Provided

EDUCATIONAL BACKGROUND:
No Information Provided

PRIOR GOVERNMENTAL EXPERIENCE:
No Information Provided

**City of Monroe
Council Member**

BILL MORGAN

OCCUPATION;
C. Miller Lumber Inc.

OCCUPATIONAL BACKGROUND:
Lumber Industry

EDUCATIONAL BACKGROUND:
Junction City, Oregon Schools 12 years

PRIOR GOVERNMENTAL EXPERIENCE:
City Council (1 Term)

This information furnished by Bill Morgan and is printed exactly as submitted.

*"It were not best that
we should all think alike;
it is difference of opinion
that makes a horse race"*

Mark Twain







The Democratic Vision

Democrats regard democratic government as a force for good and a source of hope. We support a fair tax system based on ability to pay, a strong system of quality public education, and a health care system that covers everyone.

All Democrats living in Benton County are invited to participate in our biennial platform convention in which we craft a bold, detailed document of our goals. The current platform is available at our headquarters and at local libraries.

Benton County Democrats are committed to electing leaders at all levels of government who are effective, accessible, and accountable:

Representative in Congress

4th District
5th District

Peter DeFazio
Catherine Webber

Governor

John Kitzhaber

Labor Commissioner

Mary Wendy Roberts

State Senator

18th District
19th District

Cliff Trow
Mae Yih

State Representative

34th District
35th District
36th District

Mona K-Hinds
Barbara Ross
Peter Tarzian

Benton County Commissioner

Kent Daniels

You can make a difference by casting an informed vote on the candidates and ballot measures. Stop by our headquarters or call us for information on all the Democratic candidates, and ballot measures.

The Benton County Democratic Central Committee voted to endorse the following:

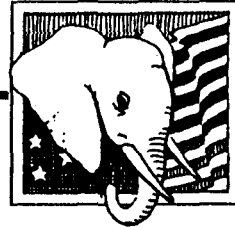
VOTE YES: Measures 3, 14, and 18, the LBCC Levy, and

VOTE NO: Measures 5, 6, 7, 8, 9, 10, 12, 13, 15, 17, 19, 20
(We took no position on Measures 4, 11, and 16)

You can make a difference. Help elect Democrats by phoning, canvassing, or in many other ways. Call or stop by our office to volunteer, or send a donation for the Democratic Party's coordinated campaign or for any of the Democratic Candidates.

Call us if you need an absentee ballot, a ride to the polls, or any kind of help with voting.

Benton County Democrats
321 SW 4th St. - PO Box 232
Corvallis, OR 97339
752-4848



Republican Contract with America

The Republican Party has made a contract with the people of America. This contract promises the American people and the citizens of Benton County that the Republican Party will work for the following virtues:

Accountability

Government must be streamlined. Revenues are sufficient to provide necessary services. Government operations must be more efficient and better managed, making sure taxpayers get their money's worth.

Responsibility

The family is the center of society. Legislation should support and protect the integrity of the family and promote the ability of family members to provide for their family. Strong families insure hope for the future and are society's best method of crime prevention.

Literacy and education are keys to a free society. The primary responsibility for a child's education rests with the parents. Public education should be constantly reviewed locally by professionals and parents. These reviews should lead to improvements in our public schools, better preparing our youth for further education and the work force.

Affordable, available health care is possible. We endorse insurance and tort reform and freedom of choice as basic components of health care reform. Rather than government mandates, Republicans endorse individual responsibility for health care by those who are physically and/or mentally capable.

Our purpose is to elect Republican candidates who recognize the importance of individual responsibility and integrity.

Opportunity

Federal, state and local taxes should be designed to encourage private initiative. Businesses must not be taxed into oblivion.

Our laws must protect private property rights.

Republicans want to restore peoples' hope that they can achieve the American dream.

Benton County Republicans Endorse Modification of the Endangered Species Act to Include the Human Factor.

This information was furnished by Benton County Republican Central Committee, PO Box 808, Corvallis, OR 97339.

754-9155

Precincts & Polling Places

BENTON
COUNTY

The following list of districts and precincts within those districts is provided to help you identify which U.S. Representative, State Senator, and State Representative candidates will be on your ballot at the next election. Find your precinct number or name in the left column. It will identify your representative, senatorial, and congressional district in the columns at the right. If you have any questions about which candidates you are eligible to vote for at the next election, please call the election division. Some of the polling places designated here as inaccessible to elderly or physically disabled voters may be accessible by election day. Check published lists of polling places in your local newspaper just prior to election day, or call the elections division for specific information on your polling place. Hearing impaired persons may call 757-6756 for assistance.

Precincts and Polling Place	State Rep. Dist.	State Sen. Dist.	U.S. Cong. Dist.	Precincts and Polling Place	State Rep. Dist.	State Sen. Dist.	U.S. Cong. Dist.
* No. 82 Corvallis Lincoln School 110 SE Alexander	35	18	5	No. 100 Corvallis First Christian Church 602 SW Madison	35	18	5
No. 83 Corvallis Church of Good Samaritan 333 NW 35th St.	35	18	5	* No. 101 Corvallis Lincoln School 110 SE Alexander Ave.	35	18	5
* No. 84 Corvallis Cheldelin School 987 NE Conifer Blvd.	35	18	5	* No. 102 Corvallis Adams School 1615 SW 35th St.	35	18	5
* No. 85 Corvallis Garfield School 1205 NW Garfield Ave.	35	18	5	No. 103 Corvallis LaSells Stewart Center 26th and SW Western	35	18	5
* No. 86 Corvallis Jefferson School 1825 NW 27th St.	35	18	5	* No. 104 Corvallis Senior Citizens Center 2601 NW Tyler Ave.	35	18	5
* No. 87 Corvallis Adams School 1615 SW 35th St.	35	18	5	* No. 105 Corvallis First Baptist Church NW 9th and Monroe	35	18	5
* No. 88 Corvallis Lincoln School 110 SE Alexander Ave.	35	18	5	No. 106 Corvallis First Christian Church 602 SW Madison	35	18	5
* No. 89 Corvallis Unitarian Fellowship 2945 NW Circle Blvd.	35	18	5	* No. 107 Corvallis Corvallis High School Cafeteria 836 NW 11th	35	18	5
* No. 91 Corvallis Adams School 1615 SW 35th St.	35	18	5	* No. 108 Corvallis Garfield School 1205 NW Garfield Ave.	35	18	5
* No. 92 Corvallis Adams School 1615 SW 35th St.	35	18	5	* No. 109 Corvallis Highland View Inter. School 1920 NW Highland	35	18	5
* No. 93 Corvallis Adams School 1615 SW 35th St.	34	18	5	* No. 110 Corvallis Kings Circle Assembly of God Church 2110 NW Circle	35	18	5
* No. 94 Corvallis Northwest Hills Baptist Church 3300 NW Walnut Blvd.	35	18	5	* No. 111 Corvallis Jefferson School 1825 NW 27th	35	18	5
* No. 95 Corvallis Benton County Courthouse 120 NW 4th St.	34	18	5	* No. 112 Corvallis Harding School 510 NW 31st Street	35	18	5
* No. 96 Corvallis Unitarian Fellowship 2945 NW Circle Blvd.	35	18	5	* No. 113 Corvallis Harding School 510 NW 31st Street	35	18	5
* No. 97 Corvallis Northwest Hills Baptist Church 3300 NW Walnut Blvd.	35	18	5	* No. 114 Corvallis Unitarian Fellowship 2945 NW Circle	35	18	5
* No. 98 Corvallis Wilson School 2701 NW Satinwood St.	35	18	5	* No. 115 Corvallis Kings Circle Assembly of God Church 2110 NW Circle	35	18	5
* No. 99 Corvallis Calvin Presbyterian Church 1736 NW Dixon	35	18	5	* No. 116 Corvallis Garfield School 1205 NW Garfield Ave.	35	18	5

* Access for Persons with Physical Disabilities Available

Precincts & Polling Places

BENTON
COUNTY

Precincts and Polling Place	State Rep. Dist.	State Sen. Dist.	U.S. Cong. Dist.	Precincts and Polling Place	State Rep. Dist.	State Sen. Dist.	U.S. Cong. Dist.
* No. 117 Corvallis Cheldelin Inter. School 987 NE Conifer	35	18	5	* No. 138 Blodgett Blodgett School	34	18	4
* No. 118 Corvallis Northwest Hills Baptist Church 3300 NW Walnut Blvd.	35	18	5	* No. 139 Corvallis Fairplay School 3855 NE Hwy. 20	35	18	5
No. 119 Corvallis Benton Center (LBCC) 630 NW 7th	35	18	5	* No. 140 Monroe American Legion Hall Main Street	34	18	4
No. 120 Corvallis Church of Good Samaritan 333 NW 35th St.	35	18	5	No. 141 Corvallis Willamette Grange Hall SW Hwy. 99/Greenberry	35	18	4
* No. 121 Corvallis Lincoln School 110 SE Alexander Ave.	35	18	5	* No. 142 Corvallis Crescent Valley High School 4444 NW Highland Dr.	36	19	5
* No. 122 Corvallis Evangelical Church 1525 NW Kings Blvd.	35	18	5	No. 143 Albany North Albany School 815 E. Thornton Lake Dr.	36	19	5
* No. 123 Corvallis Senior Citizens Center 2601 NW Tyler Ave.	35	18	5	* No. 144 Albany Fir Grove School 5355 NW Scenic Dr.	36	19	5
* No. 124 Corvallis Wilson School 2701 NW Satinwood St.	35	18	5	* No. 145 Corvallis Suburban Christian Church 2760 SW 53rd St.	35	18	5
* No. 125 Corvallis Corvallis High School Cafeteria 836 NW 11th	35	18	5	* No. 146 Corvallis Adams School 1615 SW 35th St.	35	18	5
No. 126 Corvallis LaSells Stewart Center 26th and SW Western	35	18	5	* No. 147 Corvallis Lincoln School 110 SE Alexander Ave.	35	18	4
No. 127 Corvallis Withycombe Hall 30th and Campus Way	35	18	5	* No. 148 Corvallis Adair Officers Clubhouse Adair Village	34	18	5
* No. 128 Corvallis Northwest Hills Baptist Church 3300 NW Walnut Blvd.	35	18	5	No. 149 Monroe Bellfountain Community Church Bellfountain	34	18	4
No. 130 Wren Wren Community Hall Kings Valley Highway	34	18	4	No. 150 Monroe Irish Bend School Irish Bend	34	18	4
* No. 131 Corvallis Suburban Christian Church 2760 SW 53rd St.	34	18	4	* No. 151 Monroe Alpine School Alpine	34	18	4
No. 132 Philomath Marys River Grange Hall Grange Hall Rd.	34	18	4	* No. 152 Corvallis Benton County Fairgrounds 110 SW 53rd St.	34	18	4
* No. 133 Philomath Philomath Library 2054 Applegate	34	18	4	* No. 153 Philomath Philomath High School 2054 Applegate	34	18	5
* No. 134 Albany Fairmont School 1005 NW Springhill	36	19	5	* No. 154 Corvallis Inavale School SW Bellfountain Rd.	34	18	4
* No. 135 Albany Oak Grove School 1500 NW Oak Grove	36	19	5	No. 155 Philomath Marys River Grange Hall Grange Hall Rd.	34	18	4
No. 136 Corvallis Benton County Fairgrounds 110 SW 53rd Street	35	18	5	* No. 156 Corvallis First Congregational Church 4515 SW West Hills	34	18	5
* No. 137 Alesia Alesia School Hwy. 34	34	18	4	* No. 157 Corvallis Crescent Valley High School 4444 NW Highland Dr.	35	18	5

* Access for Persons with Physical Disabilities Available

Precincts & Polling Places

BENTON COUNTY

Precincts and Polling Place	State Rep. Dist.	State Sen. Dist.	U.S. Cong. Dist.
* No. 158 Corvallis Mt. View School 340 NE Granger	36	19	5
* No. 159 Corvallis Crescent Valley High School 4444 NW Highland Dr.	34	18	4
* No. 160 Albany Fir Grove School 5355 NW Scenic Dr.	34	18	5
* No. 161 Philomath Philomath High School 2054 Applegate	34	18	4
* No. 163 Albany Fairmont School 1005 NW Springhill	36	19	4
* No. 164 Albany Fairmont School 1005 Springhill Rd.	36	19	4
* No. 165 Albany North Albany School 815 E. Thornton Lake Dr.	36	19	5
* No. 166 Albany Oak Grove School 1500 NW Oak Grove	36	19	5
* No. 167 Corvallis Crescent Valley High School 4444 NW Highland Dr.	34	18	5
* No. 168 Corvallis Crescent Valley High School 4444 NW Highland Dr.	36	19	5
* No. 169 Philomath Philomath Library 2054 Applegate St.	34	18	5

* Access for Persons with Physical Disabilities Available

Benton County
VOTERS' PAMPHLET

General Election

Nov. 8, 1994

Polls Open 7:00 A.M. to 8:00 P.M.

“The will of the people is the only legitimate foundation of any government, and to protect its free expression should be our first object.”

Thomas Jefferson

PUBLISHED BY THE

BENTON COUNTY BOARD OF COMMISSIONERS



Election Questions?

Call
Benton County
Department of Records and Elections
757-6756 or 757-6831
(TTY/TDD 757-5646)