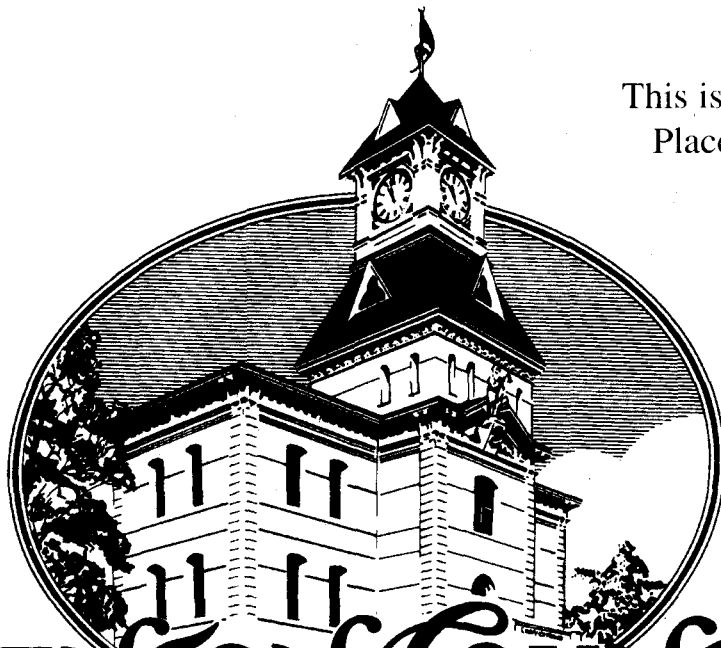


BENTON COUNTY

VOTERS' PAMPHLET

This is a Polling
Place Election



BENTON COUNTY

O • R • E • G • O • N

PRIMARY ELECTION
MAY 21, 1996

PUBLISHED BY THE
BENTON COUNTY
BOARD OF COMMISSIONERS

This is the beginning of your county voters' pamphlet. The county portion of this joint voters' pamphlet is inserted in the center of the state portion. Each page of the county voters' pamphlet is clearly marked with a color bar on the outside edge. All information contained in the county portion of this pamphlet has been assembled and printed by the Benton County Department of Records and Elections, 757-6756.

Please RECYCLE this pamphlet with your newspapers



BOARD OF COMMISSIONERS

180 NW 5th Street
Corvallis, OR 97330-4777
(503) 757-6800
FAX (503) 757-6893

Dear Fellow Benton County Voter,

On May 21, 1996, a Primary Election will be held at which you will have an opportunity to exercise your rights and privileges to elect candidates and enact laws.

The Board of Commissioners has created the **Local Voters' Pamphlet** in order to provide information about local candidates and measures and to assure that the voters of Benton County are well-informed about the choices they will face when they go to the polls on May 21.

Included in the **Local Voters' Pamphlet** is a "Sample Ballot," followed by instructions on voting, information about local candidates, the text of measures and arguments for and against proposed measures, a list of all precincts and polling places and statements provided by both major political parties.

Once again, in an effort to reduce the production and mailing costs associated with providing this information, Benton County has contracted to insert its **Local Voters' Pamphlet** in the **State Voters' Pamphlet**.

It is our hope that the information provided herein will assist you in making wise and informed choices for our community.

Sincerely,

Pam Folts, Chair
Benton County
Commissioner

Kent Daniels
Benton County
Commissioner

John Dilworth
Benton County
Commissioner

VOTE
May 21, 1996

BENTON COUNTY, OREGON

SAMPLE BALLOT

Primary Election

May 21, 1996

This sample ballot is a composite of all measures and offices appearing on the ballots in Benton County. Not all voters are eligible to vote on every measure or office listed on this Sample Ballot.



STATE OF OREGON

REPUBLICAN CANDIDATES

U.S. SENATOR

KIRBY BRUMFIELD ← ←
ROBERT J. FENTON ← ←
JEFF LEWIS ← ←
GORDON SMITH ← ←
LON MABON ← ←
WRITE-IN ← ←

U.S. REPRESENTATIVE 4TH DIST.

JAMIE CLOONAN ← ←
JOHN D. NEWKIRK ← ←
WRITE-IN ← ←

U.S. REPRESENTATIVE 5TH DIST.

JIM BUNN ← ←
CLARK THOMAS SEELEY ← ←
DAVID H. MILLER ← ←
WRITE-IN ← ←

SECRETARY OF STATE

PAUL DAMIAN WELLS ← ←
STAN ASH ← ←
WRITE-IN ← ←

STATE TREASURER

BEV CLARNO ← ←
WRITE-IN ← ←

ATTORNEY GENERAL

VICTOR J. HOFFER ← ←
WRITE-IN ← ←

STATE REPRESENTATIVE 34TH DIST.

WALT WAGNER ← ←
DENNIS DE MERS ← ←
ALICE PROPE ← ←
LANE P. SHETTERLY ← ←
WRITE-IN ← ←

STATE REPRESENTATIVE

35TH DISTRICT

ERIK BOOTSMA ← ←
WRITE-IN ← ←

STATE REPRESENTATIVE

36TH DISTRICT

CAROLYN OAKLEY ← ←
WRITE-IN ← ←

COUNTY COMMISSIONER POSITION 2

DARWIN HANNING ← ←
O. R. (BOB) ADAMS ← ←
DAVE STATON ← ←
WRITE-IN ← ←

COUNTY COMMISSIONER POSITION 3

JOHN DILWORTH ← ←
WRITE-IN ← ←

DEMOCRATIC CANDIDATES

U.S. SENATOR

JERRY RUST ← ←
BILL DWYER ← ←
ANNA NEVENICH ← ←
TOM BRUGGERE ← ←
HARRY LONSDALE ← ←
WRITE-IN ← ←

U.S. REPRESENTATIVE 4TH DIST

PETER A. DEFAZIO ← ←
WRITE-IN ← ←

U.S. REPRESENTATIVE 5TH DIST

LOREN W. COLLINS ← ←
DARLENE HOOLEY ← ←
SHARON SCOTT ← ←
WRITE-IN ← ←

SECRETARY OF STATE

PHIL KEISLING ← ←
WRITE-IN ← ←

STATE TREASURER

JIM HILL ← ←
WRITE-IN ← ←

ATTORNEY GENERAL

KEVIN L. MANNIX ← ←
HARDY MYERS ← ←
WRITE-IN ← ←

U.S. REPRESENTATIVE 34TH DIST

JOHN MCARDLE ← ←
WRITE-IN ← ←

U.S. REPRESENTATIVE 35TH DIST

BARBARA ROSS ← ←
WRITE-IN ← ←

U.S. REPRESENTATIVE 36TH DIST

PETER TARZIAN ← ←
WRITE-IN ← ←

COUNTY COMMISSIONER POSITION 2

TERRY RAVLIN ← ←
GENE BELHUMEUR ← ←
CHESTER AVERY ← ←
WRITE-IN ← ←

COUNTY COMMISSIONER POSITION 3

BOB SPEAKER ← ←
WRITE-IN ← ←

NON PARTISAN CANDIDATES JUDGE-SUPREME COURT

POSITION 1

REX ARMSTRONG ← ←
FRANK J. YRAGUEN ← ←
TED KULONGOSKI ← ←
WRITE-IN ← ←

JUDGE-COURT OF APPEALS

POSITION 1

PAUL J. DE MUNIZ ← ←
WRITE-IN ← ←

JUDGE-COURT OF APPEALS

POSITION 2

WALTER I. EDMONDS ← ←
WRITE-IN ← ←

ASSESSOR

PAM GRANT ← ←
WRITE-IN ← ←

MEASURES

STATE MEASURE NO. 23

INCREASES MINIMUM VALUE

YES ← ←
NO ← ←

STATE MEASURE NO. 24

PETITION SIGNATURES FROM
EACH CONGRESSIONAL
DISTRICT

YES ← ←
NO ← ←

STATE MEASURE NO. 25

REQUIRES 3/5 MAJORITY PASSES
REVENUE

YES ← ←
NO ← ←

MEASURE NO. 02-23

ALLOWS COMMISSIONERS TO
ASSUME CONTROL

YES ← ←
NO ← ←

MEASURE NO. 02-24

CHANGE CHARTER RELATING
TO VACANCIES

YES ← ←
NO ← ←

MEASURE NO. 02-25

CHANGE THE COUNTY CHARTER
TO ESTABLISH REQUIREMENTS
FOR ELECTIVE OFFICE

YES ← ←
NO ← ←

MEASURE NO. 02-21

CITY OF PHILOMATH DELAYED
ANNEXATION

YES ← ←
NO ← ←

MEASURE NO. 22-29

GREATER ALBANY PUBLIC
SCHOOL DISTRICT GENERAL
OBLIGATION BOND

YES ← ←
NO ← ←

MEASURE NO. 02-22

ESTABLISHING NEW TAX BASE
FOR HOSKINS-KINGS VALLEY
FIRE DISTRICT

YES ← ←
NO ← ←

MEASURE NO. 02-20

PALESTINE RURAL FIRE
DISTRICT 1 YEAR LEVY

YES ← ←
NO ← ←

VOTER REGISTRATION INFORMATION

To be eligible to vote in the May 21, 1996 election, a completed voter registration card must be on file with the Benton County Department of Records and Elections by not later than 5:00 p.m., April 30, 1996.

YOU MAY REGISTER TO VOTE IF:

1. You are a citizen of the United States.
2. You will be 18 years of age or older on election day.
3. You are a resident of Oregon.

YOU MUST RE-REGISTER TO VOTE IF:

1. Your residence or mailing address changes.
2. Your name changes.
3. You wish to change party affiliation.

IMPORTANT NOTE; IF YOU HAVE MOVED OR YOUR NAME HAS CHANGED AND YOU HAVE NOT YET RE-REGISTERED, YOU MAY STILL BE ELIGIBLE TO DO SO. CONTACT BENTON COUNTY ELECTIONS OFFICE, 757-6756

VOTING INSTRUCTIONS

VOTING YOUR BALLOT

Step 1: Sign Poll Book and receive Ballot with Secrecy Protector

Step 2: Take Ballot and Secrecy Protector to Voting Booth

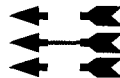
Step 3: Use the Ballot Marking Instrument in the Voting Booth

Step 4: Vote by connecting the Head and Tail of the Arrow pointing to the Candidate of your choice.

Example:

Vote for One

George Washington
Susan B. Anthony
Abraham Lincoln



Step 5: To Vote for a Candidate whose name does not appear on the ballot, write name on "Write In" line and complete arrow pointing to that line.

Example:

Write In:

Millard Fillmore



Step 6: Vote on Measures by completing the arrow pointing to either the

"YES"

OR

"NO"



Step 7: When you have Completed Voting, place Ballot in Secrecy Protector with Stub Portion extending Outside the Protector

Step 8: Ballot Box Attendant will remove stub, then you slide Ballot into Ballot Box and return empty Secrecy Protector to Attendant

If an elector makes a mistake while voting an Absentee Ballot or otherwise "spoils" a ballot he or she may request another ballot from the Elections Office. If a mistake is made or ballot is otherwise "spoiled" while trying to vote at the polls on election day, then the voter may get a replacement ballot from an election board worker **prior to placing the ballot in the Ballot Box.**

ABSENTEE BALLOTING

Any elector wishing to vote using an Absentee Ballot must make such a request in writing, signed by the applicant. The application for an Absentee Ballot may be made by "fax" machine. (757-6757)

In order to be counted at an election, a returned Absentee Ballot must be received in the Elections Office or at a polling location not later than 8:00 p.m. on the day of the election.

The "Sample Ballot" and Voters' Pamphlet may be used to assist electors at the polls.

For information about registration and voting, contact:

**Benton County Elections Office
120 N.W. 4th St.
Corvallis, OR 97330
757-6756**

C A N D I D A T E S

Candidates' statements are printed as filed. The Benton County Department of Records & Elections has attempted to correct spelling errors, but is not responsible for candidates' grammar, syntax or the accuracy of statements.

Republican Candidate for
Benton County Commissioner
Position 2



**DAVID
 STATON**

OCCUPATION:
 Computer Operations
 Supervisor at
 Information
 Technology Services
 (OSSHE)

**OCCUPATIONAL
 BACKGROUND:**
 '74 to present,
 Computer operations
 '73 to '74, Accounting
 clerk
 '72 to '73, Restaurant
 Mgr. / Student
 '69 to '74, Student
 '68 to '69, Millworker
 '64 to '68, US Navy

EDUCATIONAL BACKGROUND:
 OSU, BS - Business (Management) '75
 LBCC, Liberal Studies '71-'73
 US Navy Electronics, Aviation Electronics, ECM Schools

PRIOR GOVERNMENTAL EXPERIENCE:
 No prior experience

Benton County is a great place to live and work, with a combination of urban and rural opportunities and an outstanding employment rate. I want to continue this lifestyle through carefully planned growth and development, to make Benton County open and accessible to business and to all citizens. After living and working here for more than twenty-five years, I bring to this position the energy, earnestness, and enthusiasm to do the best possible job.

I intend to work toward improving the road system, facilitating improved transportation, creating additional positive youth development programs, maintaining current urban growth boundaries, and continuing our very effective law enforcement program. Our Benton County Commissioners, working carefully with our citizens, can further improve the quality of life in our county.

The county commissioners are a triumvirate board. The three members must work as a team to facilitate change which is positive for all of Benton County's citizens. As I work with the other two members to develop economically effective budgets and to make decisions which affect citizens' lives, I will be fair, open, and honest with all. Your vote for David Staton will result in quality government which works hard for the citizens of Benton County.

This information furnished by David Staton and is printed exactly as submitted.

Republican Candidate for
Benton County Commissioner
Position 2



**DARWIN
 HANNING**

OCCUPATION:
 Management Analyst,
 Oregon Department of
 Revenue

**OCCUPATIONAL
 BACKGROUND:**
 Department of Revenue;
 President, Relevare
 Systems, Corp.; General
 Manager, Money Tree
 Software; sales representative; customer service representative; sawmill worker; U.S. Air Force, stationed at Adair Air Force Station before transfer to the 35th Supply Squadron at Phan Rang Air Force Base, South Vietnam, also served as language instructor in Saigon.

EDUCATIONAL BACKGROUND:
 B.S., Political Science, OSU, 1988; A.S., Environmental Technology, LBCC, 1972.

PRIOR GOVERNMENTAL EXPERIENCE:
 City of Philomath Budget Committee, 1979-1981; Philomath City Council, 1981-1983.

DARWIN ON CITIZEN INVOLVEMENT:

"**WE** are responsible for ourselves. **WE** are responsible for our families. **WE** are responsible for our communities. If we keep our priorities in this order, we are better able to reach out and help those in need. Much of the work assumed by county government would not be necessary."

DARWIN ON THE BUDGET:

"We have a budget shortfall. **WHY?** What were the commissioners doing when they should have been watching funding? Last year, Pam Folts and Kent Daniels removed Benton County's representation from the Association of Oregon and California Counties, effectively destroying our ability to lobby for revenue from O & C lands.

"I've been a money manager for over 20 years. I'll put the county commissioners back in the business of utilizing tax money, not wasting it."

DARWIN ON THE ECONOMY:

"We need to develop the livability and economic strengths of Adair Village, Asea, Blodgett, Monroe and Philomath by attracting more clean industries to the county. As an entrepreneur, I helped develop some of these industries. I know what can be done and what **must** be done."

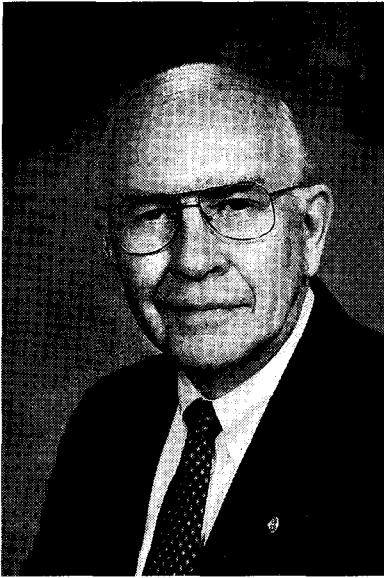
DARWIN ON PUBLIC SAFETY:

"Because of Measure 11, the state is sending felons back to Corvallis to do their time. To stop crime in Benton County, **we must make crime have consequences.** We must pay the price. We must take responsibility. We must provide jail space."

VOTE DARWIN HANNING!

This information furnished by Darwin Hanning and is printed exactly as submitted.

**Republican Candidate for
Benton County Commissioner
Position 2**



**O.R. "BOB"
ADAMS**

OCCUPATION:
Business Owner

**OCCUPATIONAL
BACKGROUND:**
Veteran, Business
owner for 30 years,
Former Dean, Vice
President and Interim
President of Linn
Benton Community
College

**EDUCATIONAL
BACKGROUND:**
Oregon State
University, BS;
University of Oregon,
MS; University of
Oregon, D. of ED.

LEADERSHIP EXPERIENCE:

Elected to Linn Benton Community College Board of Directors (Two terms as chairman); Appointed to City of Albany Planning Commission; Appointed to Corvallis Benton County Economic Development Partnership; County appointee to Regional Strategies Board and Hospital Facilities Authority. Elected to Board of Directors Southwestern Community College, Coos Bay; Board member of numerous civic and service organizations including Camp Fire, YMCA, Rotary, Chamber of Commerce, and Creative Arts Guild.

As Benton County Commissioner I will focus on the following issues:

BUDGET: Using our limited resources effectively and efficiently and prioritizing our needs accordingly.

GOVERNMENT ORGANIZATION: Improving and simplifying county government and to make it more user friendly. County government must be open and involve all interested citizens.

PUBLIC SAFETY AND HEALTH: Providing a safe, healthy, and civil community for young and old alike.

INFRASTRUCTURE: Protecting our investment in roads, bridges, and other public facilities. Future infrastructure needs must be anticipated and prioritized.

LAND USE: Land use processes must be simplified. We must use common sense and fairness when dealing with individuals within the frame work of what is best for all of us.

SOCIAL PROGRAMS: Supporting efforts that strengthen the family and foster individual responsibility and independence.

ECONOMIC DEVELOPMENT: Diversifying our economic base and providing a wider range of working opportunities.

I have a strong background in and commitment to local governance and decision making. In addition I believe that a democratic society must endeavor to provide equal opportunity. The two cornerstones for providing opportunity are education and an economy which provides diverse work opportunities. Given these opportunities, individual effort becomes the most important factor in achieving the quality of life chosen.

This information furnished by O.R. "Bob" Adams and is printed exactly as submitted.

**Republican Candidate for
Benton County Commissioner
Position 3**



**JOHN
DILWORTH**

OCCUPATION:
Benton County
Commissioner.

**OCCUPATIONAL
BACKGROUND:**
1968-78 Faculty
Member, Oregon State
University;
1978-Present, Owner
Oregon Crop
Improvement Service
and Green Peak Tree
Farm. Elected Benton
County Commissioner
in 1988.

**EDUCATIONAL
BACKGROUND:**
BS Oregon State
University, 1968;

Graduate Corvallis High School, 1962; Graduate work at OSU, 1968-78.

PRIOR GOVERNMENT EXPERIENCE:

Association of Oregon Counties Board and Legislative Committee, District Chair of District 5 Linn, Benton and Lane Counties. Chair Cascades West Council of Governments. Chair of the twenty seven county Oregon Consortium providing job training for low income and dislocated workers. Member of National Steering Committee of Prisons and Public Safety. Senior Services Advisory Committee. Chair of Managed Care Taskforce for Seniors. Member of Local Advisory Council to the Oregon Workforce Quality Council. Member, Regional Workforce Quality Council. Vice Chair of Local Officials Advisory Council for the Oregon Department of Human Resources. Member of Linn Benton Housing Authority Board. Member of Regional Strategies Board for Linn, Lane, Lincoln and Benton Counties. Member of the Corvallis Area Network Committee (COR-NET).

ORGANIZATIONS: Vice President, Oregon Trail Council. Boy Scouts. Chairman Retired Senior Volunteer Program. United Way Fund Drive. Co-Chair Benton Linn County Red Cross Fund Drive. Past president and Lt. Governor, Kiwanis. Friends of RSVP.

JOHN DILWORTH

AN ACTIVE LEADER IN BENTON COUNTY

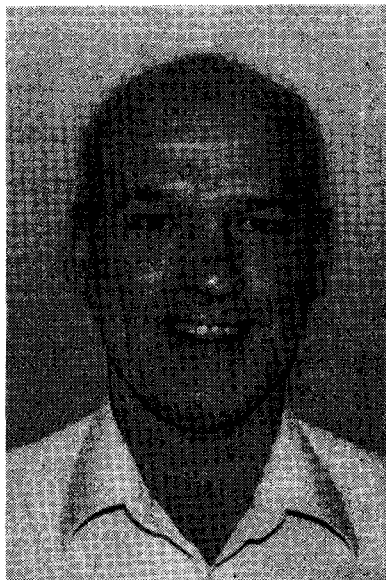
Creating greater efficiencies is the only way local government can meet the reality of greater public demand and restricted funding. John has worked diligently to help form partnerships with other government agencies to create efficiencies for the future. The use of technology has allowed Benton County staff to increase productivity without adding staff. John has been instrumental in developing county networks to improve communication.

MAKING GOVERNMENT AVAILABLE TO THE PUBLIC is the way John signs off on his E-mail messages to the community. John meets regularly with the press to discuss county issues, has started a local radio show and currently has the first "test page" on line so the public can access county information in the future.

**RE-ELECT JOHN DILWORTH BENTON COUNTY
COMMISSIONER**

This information furnished by the Dilworth for Commissioner Committee and is printed exactly as submitted.

**Democratic Candidate for
Benton County Commissioner
Position 2**



**CHESTER
AVERY**

OCCUPATION:
Retail Sales, Semi-
Retired

**OCCUPATIONAL
BACKGROUND:**
Retail Sales,
Hardware. Purchasing
Director, Hardware,
Small Business
Owner, Custom
Farming and
Trucking, Director,
Midvalley Performing
Artist Guild.

**EDUCATIONAL
BACKGROUND:**
Oregon State
University; Junior

Standing, No Degree. Corvallis High School, Graduated 1963.

Chester Avery is an effective and efficient problem solver, using thorough research and insightful intelligence.

Chester Avery is an articulate communicator; receptive to input, able to coordinate ideas, delegate responsibility, and manage diverse interests.

Chester Avery and his wife Josephine own a home on the north side of Witham Hill, in Corvallis. Their children have all grown and are successfully out on their own.

Chester Avery believes growth and economic development should meet local and regional demands without sacrificing community values and quality of lifestyle, for now and into the future.

Chester Avery will work to reduce crime and improve the penal system to insure a safer and just society. He believes efforts should be made to rectify root causes and provide lawful opportunities for rehabilitation.

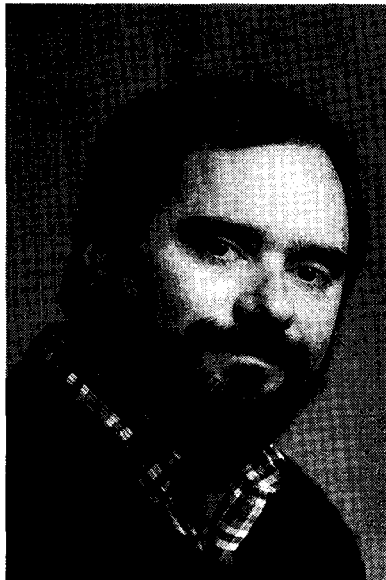
Chester Avery looks forward to achieving a balanced budget program; that is fair and efficient, without losing services fundamentally required for the prosperity and welfare of our community.

Although a political newcomer, Chester Avery is civic minded and politically knowledgeable; involved with his community.

Chester Avery has lived in the Corvallis area all his life. He is the great-great grandson of Joseph C. Avery, co-founder of Corvallis.

This information furnished by Chester Avery and is printed exactly as submitted.

**Democratic Candidate for
Benton County Commissioner
Position 2**



**TERRY
RAVLIN**

OCCUPATION:
Realtor

**OCCUPATIONAL
BACKGROUND:**
Bar manager, substi-
tute teacher, agricul-
tural worker

**EDUCATIONAL
BACKGROUND:**
University of
Vermont, (no Degree)
Linn-Benton
Community College,
Associate of Science

PRIOR GOVERNMENTAL EXPERIENCE:

Benton County Planning Commission Volunteer Appointed 1994-present.

Background: Moved to Corvallis from Vermont in 1972. Diverse job experience includes agricultural work, substitute teacher, bar manager, and Realtor. Terry and his wife, Natalie, live in Corvallis with their son, Steven, and their daughter, Camille. Terry is a 20-year veteran of the Corvallis city slow pitch softball leagues, and has acted in plays at the Majestic Theater.

**VOTE TERRY RAVLIN FOR
BENTON COUNTY COMMISSIONER**

TERRY RAVLIN: As someone who has worked in the rural areas of the county as well as in Corvallis, Terry understands the challenges citizens of both areas face. Terry will work to see that county government is a resource to help residents solve problems facing their communities.

TERRY RAVLIN: Being responsible for his own business has taught Terry how to budget carefully for hard-earned dollars. Terry will bring to county government a strong sense of fiscal responsibility.

TERRY RAVLIN: As a parent of two young children, Terry is keenly aware of the challenges facing the county to provide a safe environment, good schools, and healthy choices for our youth. Terry will work to involve parents and children in finding ways to meet these challenges.

TERRY RAVLIN: Is dedicated to quality government. With state mandated policies growing in number, as responsibilities shift from federal and state agencies to counties, Terry knows that active, vigorous leadership is needed to prepare for the future. Terry will bring a sharp mind and warm humor to the office of Benton County Commissioner.

TERRY RAVLIN: Is a team player. Terry knows that closer cooperation and coordination between county agencies and communities such as Philomath, Alsea, Monroe and Corvallis are essential in improving efficiency in government.

TERRY RAVLIN: Vigorous, hardworking, prepared.

TERRY RAVLIN: Integrity, independence, effective.

TERRY RAVLIN: Our best choice for Benton County Commissioner

This information furnished by Terry Ravlin and is printed exactly as submitted.

**Democratic Candidate for
Benton County Commissioner
Position 2**

**Democratic Candidate for
Benton County Commissioner
Position 3**



**EUGENE
BELHUMEUR**

OCCUPATION:
Sales & Marketing
Representative

**OCCUPATIONAL
BACKGROUND:**
Canada Dry Corp.,
Capitol Recording
Corp., Western Board of
Adjusters, Self-
employed wholesale
gem dealer, French's
Jewelers, Snooky's
retail

**EDUCATIONAL
BACKGROUND:**
Don Bosco Tech.,
Pasadena City College,
degrees/none.

PRIOR GOVERNMENTAL EXPERIENCE:

Mayor, City of Albany, elected. 8J Public School District, Zone 1 (Benton County) committee person, elected.

COMMENDATIONS:

"Distinguished Service Award," City of Albany, 1994. Oregon Downtown Development Association, "Commercial Revitalization Award" 1988-89, Board Member of the Year, "Peace Award" 1993, for leadership in efforts to reduce the causes of conflict and tension in our community, from Albany Christians for Peace.

I share with you common concerns, such as public safety, government spending and urban sprawl.

Your next commissioner will not only effect the livability and environment of rural Benton County, but other areas under rapid development pressure.

I recognize that we face a significant budget shortfall, and that it will be necessary to reassess how county government can work better for less.

As the first Albany mayor elected from Benton County (North Albany), I encouraged cost saving economic cooperation between city and county governments and urged careful managed growth within the Urban Growth Boundary.

I believe I have the experience and the strong leadership necessary to hold the line on spending and still provide the best in essential services.

I ask for your Vote.

WHAT PEOPLE HAVE SAID ABOUT GENE:

- "Belhumeur has been shaking things up in city government", Gazette-Times Sept. 19, 1993.
- "... a politician trying to save taxpayers money, it's unheard of in politics", F.L. Reeves, (Albany Democrat-Herald) July 17, 1993.
- "Introduced Code of Ethics for City officials, barring them from profiting off of city contracts" Albany Democrat-Herald, Nov. 3, 1993

LIKE YOU, I WANT GOVERNMENT TO OPERATE ECONOMICALLY, WITH HONESTY, INTEGRITY AND CREATIVITY.

This information furnished by Eugene Belhumeur and is printed exactly as submitted.



**BOB
SPEAKER**

OCCUPATION:
Land Use Planning
Consultant

**OCCUPATIONAL
BACKGROUND:**
Eight years as a city,
county, and private sec-
tor land use planner;
ten years in ecological
research at Oregon
State and Michigan
State Universities.

**EDUCATIONAL
BACKGROUND:**
MS, Oregon State
University; Graduate
studies in land use at
Oregon State
University; BS,
University of Michigan.

PRIOR GOVERNMENTAL EXPERIENCE:

Land use planner, Benton County and Philomath; Corvallis Parks and Recreation Advisory Board

In the next four years Benton County residents will face serious challenges in corrections, land use, and human services. Meeting these demands will require experience, creativity, and dedication. I am committed to applying my experience in government and the private sector and my abilities to solving these challenges.

EFFICIENT AND ACCOUNTABLE MANAGEMENT

I am dedicated to making Benton County government more efficient and more responsive. This can be done by listening to people who are using county services and to the employees who are providing the services. There must be more accountability in the management of the county.

PLANNING FOR THE FUTURE

Corvallis, Philomath, North Albany, and rural Benton County have experienced rapid growth over the last eight years. We must improve our land use planning efforts within the Urban Growth Boundaries to meet and stay ahead of land use issues in the urban fringe.

ACCESSIBILITY

An essential element of effective local government is staying in touch with the citizens of the county. I have worked with hundreds of city and rural county residents over the last eight years as a land use planner. I will continue to be available to all citizens at all times.

FAIRNESS

I believe in treating all people with fairness, honesty, and respect. I am against discrimination in any form and will actively oppose it.

COMMUNITY SERVICE

- Eighteen Year Corvallis Resident
- Four Year Volunteer - Corvallis Parks & Recreation, Youth Activities
- Four Year Volunteer - Corvallis School District, Youth Activities
- One Year Volunteer - Boys & Girls Club
- 1991 Corvallis Parks and Recreation Department Volunteer of the Year

This information furnished by Bob Speaker and is printed exactly as submitted.

Nonpartisan Candidate for Benton County Assessor



PAM GRANT

OCCUPATION:

Benton County
Assessor

OCCUPATIONAL BACKGROUND:

Benton County
Deputy Assessor,
1991-92; Certified
Property Appraiser;
Corvallis business
owner; real estate
sales and property
management; Court
Operations, Judicial
Department, State of
Oregon

EDUCATIONAL BACKGROUND:

Oregon Property Appraiser Certificate (Registered); Real Estate License, 1976-83; Department of Revenue certificate of completion for Commercial Appraisal I, Rural Tract Appraisal, Advanced Mass Appraisal, Tax Rate Computation, and Board of Equalization, 1988-92.

PRIOR GOVERNMENTAL EXPERIENCE:

Benton County Assessor, 1993-present

ORGANIZATIONS:

International Association of Assessing Officers; Oregon Assessors Association

PAM GRANT: SAVING TAXPAYER DOLLARS. Pam saved local governments over 3 million dollars when she successfully negotiated a tax settlement with Hewlett-Packard. "... a very good deal for taxpayers. They owe much to County Assessor Pam Grant, who negotiated the deal." (*Gazette-Times*, 11/27/95)

PAM GRANT: UP-TO-DATE APPRAISALS. For the first time in years, the Assessor's Office is in compliance with state statutes on appraisal schedules, due to the hard work of Pam and her staff. She's now working with other assessors to study and recommend improvements to appraisal methods statewide.

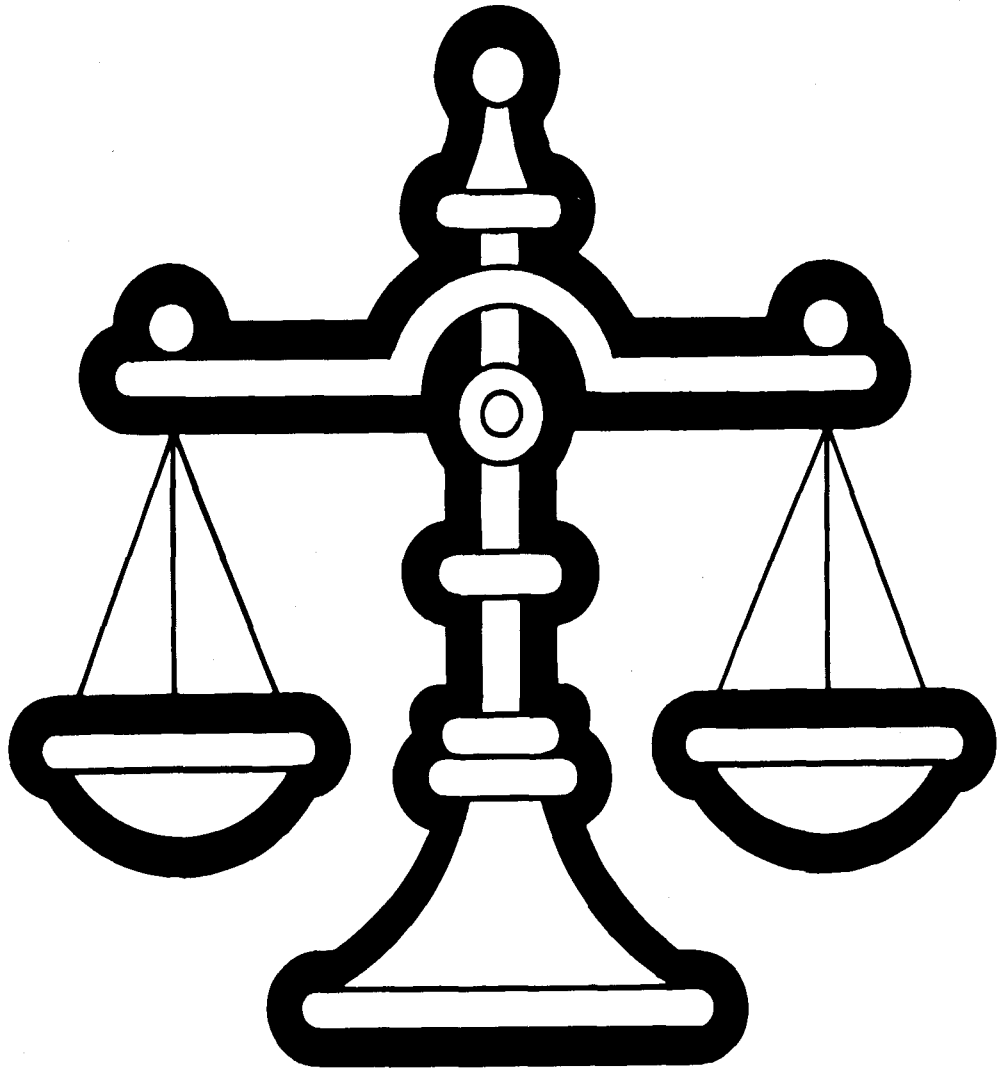
PAM GRANT: EFFICIENCY IN GOVERNMENT. Pam's been a strong leader in working with other Benton County departments to cut duplication and increase efficiency:

- Department Heads Team Leader
- Avery Task Force
- Many Departments Action Group
- Strategic Planning Team
- Quality and Leadership Initiative.

RE-ELECT PAM GRANT:

A taxpayers' advocate who believes in fairness and equity. An honest, hardworking leader who's delivered solid results in savings, service, and efficiency.

This information furnished by Committee to Re-Elect Pam Grant for Assessor and is printed exactly as submitted.



MEASURES

EXPLANATORY STATEMENTS
&
ARGUMENTS

MEASURE NO. 02-20

PALESTINE RURAL FIRE PROTECTION DISTRICT TAX BASE

Ballot Title:

One Year Operating Levy

QUESTION:

Shall Palestine Rural Fire Protection District levy \$37,374 outside the tax base for operating purposes for 1996-97?

SUMMARY:

The measure asks the voters to approve or disapprove a one-year levy to provide funds for the operation of the District.

There has been a significant increase in the fire protection contract with the City of Albany that is not provided for from the current tax base of \$40,848. Therefore, it is necessary to request an additional levy of \$37,374 to finance the operation of the District for the 1996-97 fiscal year. This levy is for other governmental purposes and is subject to the limits of Section 11b, Article XI of the Oregon Constitution.

The 1997-97 fiscal year budget requirements are \$98,900 and include \$5,290 for administration, \$66,095 for a fire protection contract with the City of Albany, and \$27,515 for unappropriated ending fund balance.

YES, I vote for the levy

NO, I vote against the levy

Submitted by:

Donna M. Young, Clerk
Palestine Rural Fire Protection District

No arguments in favor of or opposed to this measure were filed.

MEASURE NO. 02-21

PHILOMATH CONTRACTUAL DELAYED ANNEXATION

Ballot Title:

ARGUMENT IN FAVOR

A Measure Requiring a Vote on Contractual Delayed Annexations

QUESTION:

Shall contractual delayed annexations and extensions of city services beyond the city limits require a majority vote of the electors?

SUMMARY:

This measure would amend the City Charter to require that contractual delayed annexations and all other extensions of city utility services beyond the city limits be approved by a majority vote of the electors. This measure would not apply to extensions of city utility services mandated by state law. This measure shall be effective upon passage by the voters.

Submitted by
Terri Phillips, CMC
City Recorder

IN SUPPORT OF A MEASURE REQUIRING A VOTE ON CONTRACTUAL DELAYED ANNEXATIONS

On May 16, 1995 the citizens of Philomath passed a Charter Amendment 77% to 23% requiring that "all annexations" must be approved by the electors. The City of Philomath maintains that delayed annexations are considered "Contractual Agreements" and are exempt from being placed before the voters, a position which prompted this annexation initiative.

This measure does not ask for a vote on the annexation of developed property. The vote would take place before any city services are committed. A "YES" vote on this measure ensures the right of the people of the community to participate in the planning process and to help their elected representatives create a policy for growth that reflects community values.

A "YES" on this measure allows the electors an opportunity to vote on delayed annexations *before* the extension of City services and before development takes place.

The current process for the control and regulation of growth within the boundaries of Philomath has failed to pay adequate attention to schools, traffic, environmental landmarks, the quality of life, and the wishes of the citizens. Public meetings have been held and citizens have been given an opportunity to speak about these issues, but the public bodies have NOT paid heed to their concerns. The Planning Commission and the City Council seem to believe that the citizens of Philomath do not want a voice in annexations. City officials have, by their words and actions, indicated that they know and understand things beyond the understanding of the ordinary citizens.

A "YES" vote on this initiative will NOT replace the referendum which was approved by 77% of Philomath voters in May, 1995, but it will assure citizens an opportunity to review and approve development proposals BEFORE commitment of city services.

Submitted by:
Jerry R. Matthews
For the Committee for Voice in Annexations
Paid for by the C.V.A.

The printing of this argument does not constitute an endorsement by Benton County, nor does the county warrant the accuracy or truth of any statement made in the argument.

MEASURE NO. 02-22

HOSKINS-KINGS VALLEY RURAL FIRE DISTRICT

Ballot Title:

MEASURE ESTABLISHING NEW TAX BASE FOR HOSKINS-KINGS VALLEY FIRE DISTRICT

QUESTION:

Shall a new tax base of \$34,000 be established for Hoskins-Kings Valley Rural Fire Protection District beginning fiscal year 1996-1997?

SUMMARY:

The purpose of this measure is to approve a permanent change from the 1995-1996 tax base of \$16,022 to a new base of \$34,000 for the Hoskins-Kings Valley Rural Fire Protection District. The measure adjusts a tax base the voters have not amended since 1980. The increase is necessary so HKVRFDP can continue providing expected and relied upon services to the community. Services include Emergency Medical Services, wildland and structural fire suppression, disaster coordination, and fire safety education. Funds are to replace a 3000-gallon tender, make legally required equipment and building improvements, and safeguard volunteers with facilities to clean equipment and personnel. By planning for community volunteers to construct the building addition, costs can be kept to a minimum.

The new base would take effect in fiscal year 1996-97. An estimated tax rate is \$2.42 per \$1,000 for assessed improvements (buildings), not total property value. The estimated tax cost for this measure is an ESTIMATE ONLY based on the best information available from the county assessor at the time of estimate.

EXPLANATORY STATEMENT

Since 1980 the Hoskins-Kings Valley Fire Department has been an essential part of our community. Today, this all-volunteer fire and emergency medical service responds to over 50 calls a year, in addition to performing numerous other public services.

Up to now, the expense for these public services has barely been covered by the Fire Tax portion of your property taxes. Presently, the Fire Tax for the **Hoskins-Kings Valley District** is \$1.14 per \$1,000 of assessed improvements. For example, the Fire Tax on a house assessed at \$50,000 is about \$57. This gives our District about \$16,000 per year to cover all expenses.

What is this money used for?

Even with an all-volunteer fire and EMT staff, there are still significant expenses:

- Equipment maintenance and replacement
- Fire station maintenance and improvements
- Protective gear for firefighters
- Training for personnel
- Insurance

The situation today is much different from 16 years ago. Not only are we faced with major equipment reaching the replacement stage, but there are also federal and state requirements for building and equipment upgrades. The new Fire Tax rate is needed to make these mandatory changes, such as an addition at the fire station for cleaning equipment and personnel, and to replace the 3,000 gallon tanker. *If we do not achieve the minimum changes required by law, we will not be allowed to continue operating.* Our present Fire Tax rate is not sufficient to pay for these changes.

We are asking for the lowest possible Fire Tax increase that would keep the department in operation. Assuming volunteers build the addition to the fire station, a minimum tax of **\$2.42** would provide a total levy of **\$34,000** and cover construction materials and other equipment required for your Fire Department to continue.

Local fire and emergency medical services are invaluable to our community. We do not want to lose this protection. Please vote **for** the Measure to keep the Hoskins-Kings Valley Fire Department.

Submitted by:

Dan Hayes

Chairman of the

Hoskins-Kings Valley Fire Board

MEASURE NO. 02-22

HOSKINS-KINGS VALLEY FIRE DISTRICT

ARGUMENT IN FAVOR:

How valuable is our Fire Department and Emergency Medical Service?

The Hoskins-Kings Valley Fire Board is recommending an increase in the Fire Tax portion of our property taxes from a base rate of \$1.14 to \$2.42. This increase is necessary to meet federal and state requirements for fire station and equipment upgrades. The present Fire Tax rate is not enough to pay for these mandatory changes.

Nobody wants to see taxes raised, but we do not want to lose the Fire Department!

ADVANTAGES OF A LOCAL FIRE DEPARTMENT:

1) There is a **much shorter response time** for fire and medical emergencies with a fire department in the area. Without a local fire department you would have virtually no fire protection for your home, and emergency medical service would be over 30 minutes away.

2) Your homeowner's insurance rates are based primarily on the value of your home and *the proximity of a fire department*. **Having the fire department keeps your insurance rates down.** According to major insurance companies, with no fire department, your homeowner's insurance would at least double, and probably not be renewed. New applications for insurance would probably be turned down. The increase in the Fire Tax portion of your property taxes is minor compared to the doubling or even loss of your total home insurance.

3) Mortgage lenders require fire insurance, which you can get *only if there is a local fire department*. If the fire department closes and your home is financed, the mortgage can be called. **Having a fire department increases your options in financing your home.**

4) If you want to sell your home, the same rule applies: mortgage lenders require fire insurance. **Having a fire department increases your options in selling your home.**

We need fire and emergency medical services for financial benefits as well as protection for our homes and families. Vote **FOR** the Hoskins-Kings Valley Fire Department.

This information furnished by the Committee for the Support of the Hoskins-Kings Valley Emergency Services.

The printing of this argument does not constitute an endorsement by Benton County, nor does the county warrant the accuracy or truth of any statement made in the argument.

MEASURE NO. 02-23

MEASURE NO. 02-24

BENTON COUNTY

BENTON COUNTY

Ballot Title:

Ballot Title:

Change the County Charter to Allow Assumption of Departmental Control.

QUESTION:

Shall the County Charter be changed to allow the Board of Commissioners to assume control of elected officials' departments?

SUMMARY:

This change would give the Board of Commissioners the right to assume control of the county departments managed by elected officials, in the event of misconduct or malfeasance by the elected official, upon a unanimous vote of the Board at a public meeting. The vote will be supported by written findings of fact and a statement of the extent and length of time of control which will be exercised by the Commissioners.

Submitted by:
Candace A. Haines
County Counsel

No arguments in favor of or opposed to this measure were filed.

Change the County Charter relating to the filling of vacancies.

QUESTION:

Shall the County Charter be changed to amend the way vacancies in elected offices are filled?

SUMMARY:

Within thirty days of a vacancy, the central committee of the political party of the vacating member of the Board of Commissioners will give the remaining commissioners a list of qualified candidates from which to choose an interim commissioner. That person will serve out the term, unless the vacancy has occurred more than thirty days before the primary election deadline in the second year of the term. In that case, the appointee will serve until the election of a replacement at the next general election.

Submitted by:
Candace A. Haines
County Counsel

No arguments in favor of or opposed to this measure were filed.

MEASURE NO. 02-25

BENTON COUNTY

Ballot Title:

**Change the County Charter to Establish Requirements
for Elective Office.**

QUESTION:

Shall the County Charter be changed to establish or change requirements for the positions of Commissioner, Sheriff, and Assessor?

SUMMARY:

Establishes requirements for the elective office of Commissioner as to U.S. citizenship, Benton County residency, status as registered voter, and minimum age of 21. Establishes similar requirements for the office of Assessor, adding experience and certification requirements. Revises the requirements for the office of Sheriff, to clarify the position's experience and certification requirements, and the time periods covered by these requirements.

Submitted by:
Candace A. Haines
County Counsel

No arguments in favor or opposed to this measure were submitted.

MEASURE NO. 22-29

GREATER ALBANY PUBLIC SCHOOL DISTRICT

Ballot Title:

Greater Albany Public School District General Obligation Bond Authorization

QUESTION:

Shall the District be authorized to contract general obligation bonded indebtedness in an amount not to exceed \$15,210,000? If the bonds are approved, they will be payable from taxes on property or property ownership that are not subject to the limits of Section 11b, Article XI of the Oregon Constitution.

STATEMENT:

This measure, if approved, would authorize the District to issue general obligation bonds in a principal amount not to exceed \$15,210,000. Bond proceeds would be used to finance the costs of constructing, remodeling, improving, repairing, equipping and furnishing District facilities, including acquisition and installation of new technology improvements, and to pay all costs incidental thereto. The bonds would mature in not more than twelve (12) years.

Submitted by:
GAPS School Bond Committee '96

ARGUMENT IN FAVOR

A vote for the Albany school bond is a vote for excellent education and thrift.

Those were the goals of the 32 community members who created the bond measure after studying schools' needs. The group consisted of small-business owners, parents, engineers, building contractors, labor-union members, computer experts, clergy and educators.

They support the school bond as a wise choice for our community.

***Our yes votes will repair and protect schools that average 39 years old.**

More than 650,000 square feet of roofing needs repair. Every school needs an interior fire-protection system. Schools have dry rot, dangerous wiring, failing heating systems.

These buildings have problems because they are old. Still, it costs far less to fix them than to build new ones.

The school district spends \$750,000 a year on maintenance. However, it does not have enough money to make all needed repairs. The bond measure will fix major problems and keep them fixed.

***Our yes votes will relieve elementary school overcrowding without new construction.**

Four elementary schools (Clover Ridge, Liberty, Oak and South Shore) exceed their enrollment capacity. In five years, elementary schools will have 350 more students than they can handle.

The bond measure will relieve overcrowding in two low-cost steps: placing modular classrooms at overcrowded schools, and reopening Fairmount School, which closed during an enrollment decline.

***Our yes votes will make efficient learning tools, including computers, available to all students.**

Research proves that students who use computers in school improve basic skills faster than those who don't. Some Albany schools have assembled modest levels of computers. Most, however, struggle with computers that are too few and too old.

The school district spends about \$250,000 a year on computer technology. However, the district cannot provide adequate technology for all schools without cutting other programs.

The bond measure will provide appropriate technology at every school. It also will provide advanced technology for high-school vocational programs.

***The bond measure will cost each of us less than a quarter a day. This is a small price to give our students a fair chance. Vote yes on the Albany school bond.**

Submitted by GAPS School Bond Committee 96

The printing of this argument does not constitute an endorsement by Benton County, nor does the county warrant the accuracy or truth of any statement made in the argument.

EXPLANATORY STATEMENT:

This measure, if approved, would finance the following projects:

1. Make schools safer, healthier places for our children, staff members and volunteers, and for the community groups that use our buildings. The measure provides major investments in roof repairs to stop damaging leaks and in such health and safety measures as fire protection systems inside every building.
2. Protect the public's investment and enable the district to efficiently use buildings that average 40 years old - without costly new construction.
3. Enhance job prospects for graduates and put our children on an equal footing with those from other excellent districts by providing carefully planned educational technology at every school.
4. Relieve crowding where the need is greatest - at elementary schools - and in cost-effective ways by: installing portable classrooms and reopening Fairmount Elementary School.

Questions concerning this ballot measure may be answered by calling the Greater Albany Public School District 8J administrative offices at 967-4501.

Submitted by:
Thomas G. Gaulke
Director of Business
Greater Albany Public School District 8J

Precincts & Polling Places

BENTON
COUNTY

The following list of districts and precincts within those districts is provided to help you identify which U.S. Representative, State Senator, and State Representative candidates will be on your ballot at the next election. Find your precinct number or name in the left column. It will identify your representative, senatorial, and congressional district in the columns at the right. If you have any questions about which candidates you are eligible to vote for at the next election, please call the Election Office at 757-6756. Some of the polling places designated here as inaccessible to elderly or physically disabled voters may be accessible by election day. Check published lists of polling places in your local newspaper just prior to election day, or call the elections division for specific information on your polling place. Hearing impaired persons may call 757-5646 for assistance.

Precincts and Polling Place	State Rep. Dist.	State Sen. Dist.	U.S. Cong. Dist.	Precincts and Polling Place	State Rep. Dist.	State Sen. Dist.	U.S. Cong. Dist.
* No. 82 Corvallis Lincoln School 110 SE Alexander	35	18	5	No. 100 Corvallis First Christian Church 602 SW Madison	35	18	5
No. 83 Corvallis Church of Good Samaritan 333 NW 35th St.	35	18	5	* No. 101 Corvallis Lincoln School 110 SE Alexander Ave.	35	18	5
* No. 84 Corvallis Cheldelin School 987 NE Conifer Blvd.	35	18	5	* No. 102 Corvallis Adams School 1615 SW 35th St.	35	18	5
* No. 85 Corvallis Garfield School 1205 NW Garfield Ave.	35	18	5	* No. 103 Corvallis LaSells Stewart Center 26th and SW Western	35	18	5
* No. 86 Corvallis Jefferson School 1825 NW 27th St.	35	18	5	* No. 104 Corvallis Senior Citizens Center 2601 NW Tyler Ave.	35	18	5
* No. 87 Corvallis Adams School 1615 SW 35th St.	35	18	5	* No. 105 Corvallis First Baptist Church NW 9th and Monroe	35	18	5
* No. 88 Corvallis Lincoln School 110 SE Alexander Ave.	35	18	5	* No. 106 Corvallis First Christian Church 602 SW Madison	35	18	5
* No. 89 Corvallis Unitarian Fellowship 2945 NW Circle Blvd.	35	18	5	* No. 107 Corvallis Corvallis High School Cafeteria 836 NW 11th	35	18	5
* No. 91 Corvallis Adams School 1615 SW 35th St.	35	18	5	* No. 108 Corvallis Garfield School 1205 NW Garfield Ave.	35	18	5
* No. 92 Corvallis Adams School 1615 SW 35th St.	35	18	5	* No. 109 Corvallis Highland View Inter. School 1920 NW Highland	35	18	5
* No. 93 Corvallis Adams School 1615 SW 35th St.	34	18	5	* No. 110 Corvallis Kings Circle Assembly of God Church 2110 NW Circle	35	18	5
* No. 94 Corvallis Northwest Hills Baptist Church 3300 NW Walnut Blvd.	35	18	5	* No. 111 Corvallis Jefferson School 1825 NW 27th	35	18	5
* No. 95 Corvallis Benton County Courthouse 120 NW 4th St.	34	18	5	* No. 112 Corvallis Harding School 510 NW 31st Street	35	18	5
* No. 96 Corvallis Unitarian Fellowship 2945 NW Circle Blvd.	35	18	5	* No. 113 Corvallis Harding School 510 NW 31st Street	35	18	5
* No. 97 Corvallis Northwest Hills Baptist Church 3300 NW Walnut Blvd.	35	18	5	* No. 114 Corvallis Unitarian Fellowship 2945 NW Circle	35	18	5
* No. 98 Corvallis Wilson School 2701 NW Satinwood St.	35	18	5	* No. 115 Corvallis Kings Circle Assembly of God Church 2110 NW Circle	35	18	5
* No. 99 Corvallis Calvin Presbyterian Church 1736 NW Dixon	35	18	5	* No. 116 Corvallis Garfield School 1205 NW Garfield Ave.	35	18	5

* Access for Persons with Physical Disabilities Available

Precincts & Polling Places

BENTON
COUNTY

Precincts and Polling Place	State Sen. Dist.	State Rep. Dist.	U.S. Cong. Dist.	Precincts and Polling Place	State Rep. Dist.	State Sen. Dist.	U.S. Cong. Dist.
* No. 117 Corvallis Cheldelin Inter. School 987 NE Conifer	35	18	5	* No. 137 Alesia Alesia School Hwy. 34	34	18	4
* No. 118 Corvallis Northwest Hills Baptist Church 3300 NW Walnut Blvd.	35	18	5	* No. 138 Blodgett Blodgett School	34	18	4
No. 119 Corvallis Benton Center (LBCC) 630 NW 7th	35	18	5	* No. 139 Corvallis Fairplay School 3855 NE Hwy. 20	35	18	5
No. 120 Corvallis Church of Good Samaritan 333 NW 35th St.	35	18	5	* No. 140 Monroe American Legion Hall Main Street	34	18	4
* No. 121 Corvallis Lincoln School 110 SE Alexander Ave.	35	18	5	No. 141 Corvallis Willamette Grange Hall SW Hwy. 99/Greenberry	35	18	4
* No. 122 Corvallis Evangelical Church 1525 NW Kings Blvd.	35	18	5	* No. 142 Corvallis Crescent Valley High School 4444 NW Highland Dr.	36	19	5
* No. 123 Corvallis Senior Citizens Center 2601 NW Tyler Ave.	35	18	5	No. 143 Albany North Albany School 815 E. Thornton Lake Dr.	36	19	5
* No. 124 Corvallis Wilson School 2701 NW Satinwood St.	35	18	5	* No. 144 Albany Fir Grove School 5355 NW Scenic Dr.	36	19	5
* No. 125 Corvallis Corvallis High School Cafeteria 836 NW 11th	35	18	5	* No. 145 Corvallis Suburban Christian Church 2760 SW 53rd St.	35	18	5
No. 126 Corvallis LaSells Stewart Center 26th and SW Western	35	18	5	* No. 146 Corvallis Adams School 1615 SW 35th St.	35	18	5
No. 127 Corvallis Withycombe Hall 30th and Campus Way	35	18	5	* No. 147 Corvallis Lincoln School 110 SE Alexander Ave.	35	18	4
* No. 128 Corvallis Northwest Hills Baptist Church 3300 NW Walnut Blvd.	35	18	5	* No. 148 Corvallis Adair Officers Clubhouse Adair Village	34	18	5
No. 130 Wren Wren Community Hall Kings Valley Highway	34	18	4	No. 149 Monroe Bellfountain Community Church Bellfountain	34	18	4
* No. 131 Corvallis Suburban Christian Church 2760 SW 53rd St.	34	18	4	No. 150 Monroe Irish Bend School Irish Bend	34	18	4
No. 132 Philomath Marys River Grange Hall 24707 Grange Hall Rd. Philomath, OR	34	18	4	* No. 151 Monroe Alpine School Alpine	34	18	4
* No. 133 Philomath Philomath Library 1050 Applegate St. Philomath.	34	18	4	* No. 152 Corvallis Benton County Fairgrounds 110 SW 53rd St.	34	18	4
* No. 134 Albany Fairmont School 1005 NW Springhill	36	19	5	* No. 153 Philomath Philomath High School 2054 Applegate St. Philomath	34	18	5
* No. 135 Albany Oak Grove School 1500 NW Oak Grove	36	19	5	* No. 154 Corvallis Inavale School SW Bellfountain Rd.	34	18	4
No. 136 Corvallis Benton County Fairgrounds 110 SW 53rd Street	35	18	5	No. 155 Philomath Marys River Grange Hall 24707 Grange Hall Rd. Philomath	34	18	4

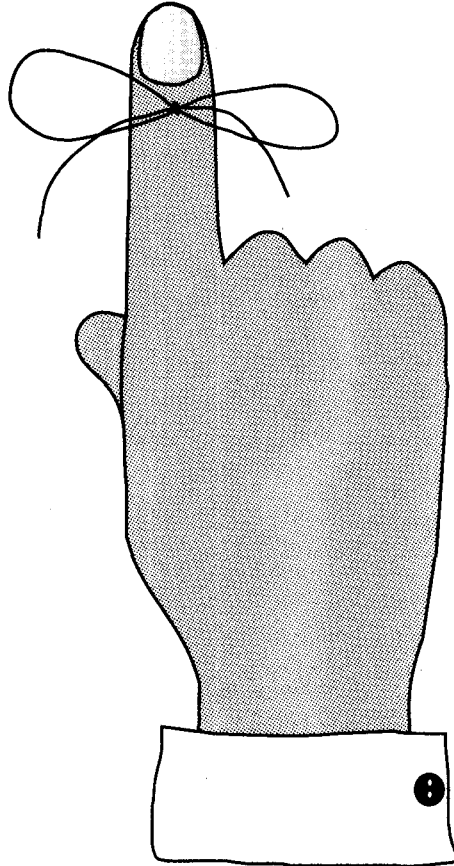
* Access for Persons with Physical Disabilities Available

Precincts & Polling Places

**BENTON
COUNTY**

Precincts and Polling Place	State Rep. Dist.	State Sen. Dist.	U.S. Cong. Dist.
* No. 156 Corvallis First Congregational Church 4515 SW West Hills	34	18	5
* No. 157 Corvallis Crescent Valley High School 4444 NW Highland Dr.	35	18	5
* No. 158 Corvallis Mt. View School 340 NE Granger	36	19	5
* No. 159 Corvallis Crescent Valley High School 4444 NW Highland Dr.	34	18	4
* No. 160 Albany Fir Grove School 5355 NW Scenic Dr.			
* No. 161 Philomath Philomath High School 2054 Applegate St.	34	18	4
* No. 163 Albany Fairmont School 1005 NW Springhill	36	19	4
* No. 164 Albany Fairmont School 1005 Springhill Rd.	36	19	4
* No. 165 Albany North Albany School 815 E. Thornton Lake Dr.	36	19	5
* No. 166 Albany Oak Grove School 1500 NW Oak Grove	36	19	5
* No. 167 Corvallis Crescent Valley High School 4444 NW Highland Dr.	34	18	5
* No. 168 Corvallis Crescent Valley High School 4444 NW Highland Dr.	36	19	5
* No. 169 Philomath Philomath Library 2054 Applegate St.	34	18	5

REMEMBER to



VOTE

**Election Day is
MAY 21, 1996**

Polls Open 7:00 am to 8:00 pm

* Access for Persons with Physical Disabilities Available



Benton County Democrats

***An open party** which encourages the participation of all interested Democrats at all levels of party activities and decision making.

*Actively recruiting the **best possible Democratic candidates** for the public service in elective office.

*Organizing extensive **voter registration and voter registration** programs which encourage individuals to become informed and support and vote for the candidates of their choice.

*Maintaining a local headquarters during the three months preceding the election which serves as a hub for activities **in support of all Democratic Candidates**.

*The only political party in Benton County with a **pro-choice, anti-discrimination, pro-environment, and pro-education** platform. Call us for a copy.

*Join us after the polls close at 8 p.m., May 21 at our **Primary Night Party** at the Old World Deli, 341 SW 2nd, Corvallis, to watch statewide returns on Cable TV, and get up-to-the-minute local results.

***Make a difference!** Call us at 752-4848 and help elect your favorite Democratic Candidates.

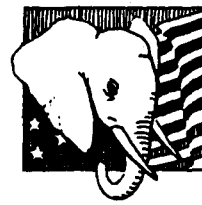
***Be a leader.** Democratic Precinct Committee Persons vote on Democratic party leaders and set Democratic Party policies. They represent the Democratic Party in their neighborhoods. Democratic Precinct Committee persons will be elected by Democratic Voters in the Primary election. You can be elected with as few as three write-in votes. Call us at 752-4848 for more information.

ENDORSEMENTS

Hardy Myers for Attorney General. Hardy Myers is a top-notch lawyer who understands the U.S. and Oregon Constitutions and will not waste Oregonians' time and money with measures of dubious constitutionality.

Vote YES on the three Benton County Charter amendments 02-23, 02-24, and 02-25.

Benton County Democrats
PO Box 232
Corvallis OR 97339 752-4848
bcodems@peak.org
<http://www.peak.org/~bcodems/bcodems.html>



Benton County Republican Central Committee Statement

DECLARATION AND PLEDGE

Republicans believe "that all men are created equal; that they are endowed by their Creator with certain unalienable rights; that among these, are life, liberty, and the pursuit of happiness."

Republicans hold to "one nation, under God, with liberty and justice for all."

GOVERNMENT'S ROLL

Republicans believe the proper roll of government is to provide for people only those critical functions that cannot be performed by individuals or private organizations and that the most effective, responsible and responsive government is government closest to the people.

Government must not dominate the economy, it cannot solve most social ills and is not the soul of our nation. Government must protect people, provide opportunity, promote responsible citizenship and preserve the environment rationally.

Government exists to serve the needs of people. People do not exist to serve the needs of government.

INDIVIDUAL AND FAMILY

Republicans believe the strength of our nation lies with the individual and that the family is the focal point of our society.

Each person's rights, dignity, freedom, ability, opportunity, responsibility and uniqueness must be honored regardless of race, creed, sex, age or disability.

Legislation should support and protect the integrity of the family and promote the ability of family members to provide for their family. Strong families insure hope for the future.

FISCAL RESPONSIBILITY

Republicans believe government must practice fiscal responsibility and allow individuals to keep more of the money they earn.

Free enterprise and individual initiative have brought this nation opportunity, economic growth and prosperity.

ELECT REPUBLICANS

Republican dedication to electing Republicans at every level of government is born of conviction that leaders should work for fair taxes, stable and productive jobs, better schools, strong law enforcement, and the protection and enhancement of the quality of life.

CHARTER AMENDMENTS

The Benton County Republican Central Committee endorses the bipartisan work of the Charter Review Committee and urges your support for all three amendments, 02-23, 02-24, 02-25.

**Benton County
VOTERS' PAMPHLET**

**Primary Election
May 21, 1996**

Polls Open 7:00 A.M. to 8:00 P.M.

"The will of the people is the only legitimate foundation of any government, and to protect its free expression should be our first object."

Thomas Jefferson

PUBLISHED BY THE
BENTON COUNTY BOARD OF COMMISSIONERS



Election Questions?

**Call
Benton County
Department of Records and Elections
757-6756 or 757-6831
(TTY/TDD 757-5646)**