



**Benton  
County**  
OREGON

# **OFFICIAL VOTERS' PAMPHLET**

**Primary Election  
May 21, 2024**

The publication and distribution of this pamphlet is coordinated by the County Clerk. The information within was provided by those who chose to participate.



**Benton County  
Elections Office  
Kalapuya Building  
4500 SW Research Way, 2<sup>nd</sup> Floor  
Corvallis, OR 97333**

Phone: 541-766-6756  
E-Mail: [elections@bentoncountyor.gov](mailto:elections@bentoncountyor.gov)  
Website: [re.bentoncountyor.gov](http://re.bentoncountyor.gov)



**Benton  
County**  
**BOARD OF  
COMMISSIONERS**

**Board of Commissioners**

Office: (541) 766-6800

Fax: (541) 766-6893

4500 SW Research Way

PO Box 3020

Corvallis, OR 97339-3020

[boc.bentoncountyor.gov](http://boc.bentoncountyor.gov)

Dear Benton County Voter:

On **Tuesday, May 21, 2024, a Primary Election** will be held in Oregon. Only voters affiliated with either the Democrat or Republican Party will have the opportunity to vote to nominate a candidate for each partisan position to appear on the General Election ballot, including Benton County Commissioner - Positions Two and Three. If you are a registered voter in Benton County, you will have the opportunity to vote for Non-Partisan positions.

The County Voters' Pamphlet provides local candidates with the opportunity to share their message with voters. An electronic version of this pamphlet is available on the County Clerk's Elections Division website at [re.bentoncountyor.gov/2024-primary-election](http://re.bentoncountyor.gov/2024-primary-election).

Voters may return their voted ballot by mail, postmarked no later than Election Day and received by May 28, 2024. Voters also have the option of returning their voted ballot at any Official Ballot Drop Site or County Elections Office in the State of Oregon through 8:00 PM on Election Day, Tuesday, May 21, 2024.

Please see the last page of the County Voters' Pamphlet for a list of Official Ballot Drop Sites in Benton County. If you need additional information or assistance, you may reach the Elections Office by phone: (541) 766-6756; email: [elections@bentoncountyor.gov](mailto:elections@bentoncountyor.gov); or in-person at 4500 SW Research Way, 2<sup>nd</sup> Floor, in Corvallis.

Sincerely,

Xanthippe Augerot

Commission Chair

Nancy V. Wyse

Commission Vice-Chair

Pat Malone

Commissioner

## TABLE OF CONTENTS

2	Letter from the Commissioners
3	Table of Contents
4	Translations النسخة المترجمة , 材料翻译, 한국어 번역물, Материалы на других языках, traducciones, คำแปลเนื้อหาเป็นภาษาไทย, Các bản dịch
5	Voting Instructions
6	Benton County Commissioner, Position 2 Liz Irish, Democrat and Gabe Shepherd, Democrat
7	Benton County Commissioner, Position 3 Nancy V Wyse, Democrat and R Keith Lembke, Republican
8	Official Ballot Drop Sites in Benton County

Information provided in statements submitted by a candidate have not been verified for accuracy or truth and do not constitute an endorsement by Benton County.

Candidate statements within this pamphlet are **optional** filings. To view candidate filings go to [re.bentoncountyor.gov](https://re.bentoncountyor.gov).

### Returning Your Voted Ballot

- **Drop** your ballot in an official Oregon ballot drop box **by 8:00 PM PDT Election Day**.
- **Mail** your ballot so it is **postmarked by Election Day** and **received no later than seven days after Election Day**.



## Attention!

Selected portions of this county voters' pamphlet are available in Arabic, Simplified Chinese, Korean, Russian, Spanish, Thai, and Vietnamese. These translations can be found online at [oregonvotes.gov/BentonVP](https://oregonvotes.gov/BentonVP)

تتوفر أجزاء مختارة من كتيبات الناخبين لهذه المقاطعة باللغة العربية يمكن العثور على هذه الكتيبات عبر الإنترنت على [.oregonvotes.gov/elections/BentonVP](https://oregonvotes.gov/elections/BentonVP)

本县选民手册的部分内容提供简体中文版本。可以访问 [oregonvotes.gov/BentonVP](https://oregonvotes.gov/BentonVP) 获取译本。

주 유권자 팸플렛의 선택된 부분은 한국어 준비되어 있습니다. 번역은 온라인 [oregonvotes.gov/BentonVP](https://oregonvotes.gov/BentonVP) 에서 찾아볼 수 있습니다.

Отдельные части брошюр избирателей этого округа доступны на русском языке. С данными переводами можно ознакомиться в Интернете по адресу: [oregonvotes.gov/BentonVP](https://oregonvotes.gov/BentonVP)

Algunas secciones de este folleto para votantes del condado están disponibles en español. Estas traducciones están disponibles en línea en [oregonvotes.gov/BentonVP](https://oregonvotes.gov/BentonVP)

จุลสารผู้ลงคะแนนในเขตนี้บางส่วนจัดทำเป็นภาษาไทย ฉบับแปลเหล่านี้สามารถพบได้ทางออนไลน์ที่เว็บไซต์ [oregonvotes.gov/BentonVP](https://oregonvotes.gov/BentonVP)

Các phần được chọn trong tập thông tin cử tri quận này có bản ngôn ngữ tiếng Việt. Bản dịch có thể xem trực tuyến tại [oregonvotes.gov/BentonVP](https://oregonvotes.gov/BentonVP)

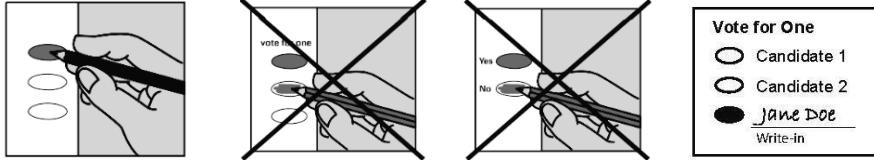
### Voting Instructions

#### Your Ballot Packet Contains

- A printed ballot on which you may vote.
- A prepaid and pre-addressed signature return envelope in which to return your ballot.

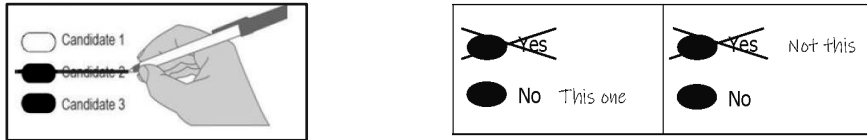
#### Voting Your Ballot

- Use a black or blue pen to fill in the ovals next to your choices.
- You do not have to vote on all contests.
- If you vote for more candidates than allowed or if you vote both Yes and No on a measure, it is called an overvote and your vote will not count for that candidate or measure.
- To write in a candidate who does not appear on your ballot, completely darken the oval to the left of the write-in line and write the full name of the candidate on that line.



#### Correcting Your Ballot

If you make an error on your ballot, you may correct it yourself. See examples below:

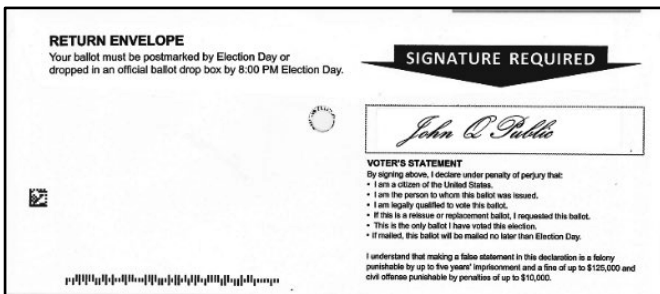


#### Contact Benton County Elections to request a replacement ballot if:

- You are unable to correct a mistake to make your intended choice clear.
- Your ballot is damaged or spoiled.
- You lose your ballot.

#### Returning Your Voted Ballot

- **SIGN** the voters' statement on the back of the signature return envelope. Your ballot will not be counted if your return envelope is not signed.
- Insert ballot into the signed return envelope.
- Seal the signed return envelope.
- **Mail no later than May 21, 2024.** It must be postmarked by Election Day and received no later than seven days after Election Day.
- Or place the signed return envelope in an **Oregon Official Ballot Drop Box** by **8:00 PM PDT May 21, 2024.**





**Benton County  
Commissioner**  
Position 2  
Democrat

**Liz  
Irish**

**Occupation:** Mortgage Lender

**Occupational Background:** 30-year Housing Professional  
**Educational Background:** North Valley High School, Rogue Community College

**Prior Governmental Experience:** Benton County Planning Commission; Benton County Planning Commission Housing Subcommittee; Benton County Budget Committee; Benton County Talks Trash Committee; Policy Advisor for Mayor Alex Johnson of Albany

**Leadership and Experience matters!**

**Housing:**

I have extensive experience in the housing industry, having crafted Mayor Alex Johnson's housing plan in Albany. I will prioritize Benton County housing of all types, and for all income levels, to ensure residents in our county have housing that works for them and their families.

**Mental Health and Houselessness:**

Mental health is a key driver of houselessness in many cases and having lived through both issues within my own family, I know we need to do more for our community here in Benton County. We need comprehensive solutions to address this problem head-on, in addition to a multi-faceted approach. Residents in our county are unique and our solutions should reflect that.

**Climate Change:**

As Oregonians, we know that the climate crisis is here to stay. We've lived with worsening wildfires year after year and know that the time to act is now. When elected to the Benton County Commission, I will prioritize climate resilient infrastructure to make sure we take strides at addressing the climate crisis while also making sure residents are safe in a changing environment.

**Endorsed by:** All three Benton County Commissioners: Nancy Wyse, Pat Malone and Xan Augerot. Mayor Alex Johnson of Albany, Corvallis City Councilor Laurie Chaplen, Metro Council President Lynn Peterson, Former Corvallis City Councilor Andrew Struthers, Curtis Wright of Corvallis, Mid-Willamette Jewish Alliance, and Andrea Myhre of Corvallis.

Visit my website at: [LizIrish4Commissioner.org](http://LizIrish4Commissioner.org).

(This information furnished by Liz Irish)



**Benton County  
Commissioner**  
Position 2  
Democrat

**Gabe  
Shepherd**

**Occupation:** Deputy City Clerk, Albany

**Occupational Background:** Industrial Engineering, Data Management

**Educational Background:** HBS Industrial Engineering, OSU

**Prior Governmental Experience:** Corvallis City Councilor; Benton County Democrats, Chair; Corvallis Budget Commissioner; City Legislative Committee, Chair; Minutes Recorder: Corvallis, Albany, Newport

Benton County needs a new approach. We need leadership and communication. Gabe has seven years' public service experience across western Oregon, a commitment to listen, and a solid grasp on the complex issues we face.

**HOUSING.** Gabe will commission a regional housing plan and move to allow farmworker and mother-in-law housing on rural land. On houselessness, Gabe will partner with nonprofits to ensure that county **funding decisions are aligned with real needs.**

**CLIMATE.** Gabe will update the county's climate action plan to address the county as a whole, not just government operations. He'll also work to build policies that **protect our communities from fire and keep rural wells from running dry.**

**ENGAGEMENT.** Weekday morning commissioner meetings are not accessible to most people. Gabe will set at least one board meeting a month in the evening and hold an annual town hall in each community. He will **give the people of Benton County a chance to be heard.**

**We support Gabe for County Commissioner:**

Peter DeFazio, former Congressman.

Oregon League of Conservation Voters.

Linn-Benton-Lincoln Central Labor Chapter of the Oregon AFL-CIO.

Progressive Democrats of America – Oregon.

Our Revolution Oregon.

Former Benton County Commissioners: Annabelle Jaramillo, Anne Schuster.

State: Senator James Manning; Reps. Mark Gamba, Travis Nelson, Farrah Chaichi.

Corvallis: Charles Maughan, mayor; Biff Traber, former mayor; City Councilors Paul Shaffer, Tracey Yee, Hyatt Lytle, Briae Lewis; School Board Members Sarah Finger McDonald, Luhui Whitebear, Chris Hawkins, Judah Largent.

Albany: Sharon Konopa, former mayor; City Councilors Steph Newton, Jackie Montague.

Monroe: City Councilors Lisa Lindner, James Winther.

Philomath: City Councilor Jessica Andrade.

**Learn more about Gabe, what he stands for, and who else supports him at [gabeshepherd.com](http://gabeshepherd.com)**

(This information furnished by  
Friends of Gabe Shepherd (20725))



## Benton County Commissioner

Position 3  
Democrat

**Nancy V  
Wyse**

**Occupation:** Benton County Commissioner  
**Occupational Background:** Sales; Resident Management; Administrative Analyst  
**Educational Background:** Oregon State University, General Science  
**Prior Governmental Experience:** January 2021- Current: Benton County Commissioner

Additional responsibilities: Association of Oregon Counties committees: Governance, Revenue, and Veterans Steering Committee; Natural Resources Steering Committee, and Council of Forest Trust Lands Counties Subcommittee. Community Services Consortium Governing Board; HOPE Advisory Board member and Executive Committee; Oregon Cascades West Economic Development District Executive Committee; Southern Willamette Valley Groundwater Management Area; Southern Valley Regional Solutions Advisory Committee; Local Officials Advisory Committee, chair; Benton County Budget Committee, vice chair.

Liaison positions: Corvallis-Benton County Economic Development Coalition; Corvallis-Benton County Library Advisory Board; Philomath Chamber of Commerce; Corvallis Chamber of Commerce; Historic Courthouse Advisory Committee; cities of Adair Village, Monroe, and Philomath.

January 2017-December 2020: Corvallis City Council including numerous board and liaison positions.

### Priorities:

- **Homelessness-** Work with community partners to move forward with additional recommendations from the Home, Opportunity, Planning, and Equity Advisory Board and the Coordinated Homeless Response Office.
- **Planning-** Long range planning to better address land use in the county and housing needs for incorporated areas. Create a short-term strategic operational plan to focus county efforts and provide transparency to community members.
- **Mental Health-** Support county mental and behavioral health programs and advocate for community health and wellbeing.
- **Climate and Environmental Justice-** Update the county's Climate Action Plan and implement recommendations from the Solid Waste Process Workgroup Report.

### Endorsements:

Oregon League of Conservation Voters; Xan Augerot, Benton County Commissioner; Pat Malone, Benton County Commissioner; John Haroldson, District Attorney; Alex Johnson II, Mayor of Albany; Corvallis Mayor Charles Maughan; Paul Shaffer, Corvallis Council President; Hyatt Lytle, Corvallis Council Vice President; Chas Jones, Philomath Mayor; Ruth Causey, Philomath City Council; Christopher McMorran, Philomath City Councilor; Curtis Wright; Penny York

nancywyseforbentoncounty@gmail.com  
 www.Facebook.com/NancyWyseBentonCo

(This information furnished by Elect Nancy Wyse)



## Benton County Commissioner

Position 3  
Republican

**R Keith  
Lembke**

**Occupation:** Retired Army Officer, Consultant, Personal Support  
**Occupational Background:** Military, National Security, Nation Building, Aviation, Intelligence  
**Educational Background:** US Military Academy (West Point). Graduated in 1983 with BS in Management; US Army Command and Staff College. Graduated in 1996; Central Michigan University. Graduated in 1999 with a Master of Science in Public Administration; National University. Graduated in 2024 with a Doctorate in Business Administration/Public Administration  
**Prior Governmental Experience:** 1983-2007: Active-Duty Army Officer with service in three wars, nine different countries, and the Pacific Rim/Asia; 2008-2011; 2014-2016: Counterinsurgency and governance capacity building advisor and mentor to the governors, senior national security personnel, and basic services directors in three Afghan provinces; 2013-2015: National security forces capacity building advisor to the US/NATO Commander in Afghanistan; Executive US advisor to the Assistant Minister of Defense in Afghanistan; Member of the National Counter-Corruption Task Force in Afghanistan

Governments are like people - the more they are in charge, the less likely they will listen to anyone else but themselves because they feel like they are the best experts to make hard decisions. The elected officials must be our counterweight to the constant demands of "experts" or we will be bled of our collective wealth to pay for all the experts' good ideas. Since coming back from Afghanistan, I have seen everything quietly becoming more expensive and more regulated at national and state level - and no one in government seems to care. At least the local elected officials should have empathy for us.

I want to run to help bring back trust, transparency, and empathy for the laborer, food service employee, truck driver, construction worker, teacher, school classified workers, secretaries, policeman, firefighters, etc. The people who are paying for the experts' great ideas need a voice that cares. That's me.

(This information furnished by R Keith Lembke)

## BENTON COUNTY OFFICIAL BALLOT DROP SITES

### Benton County Elections & Passports Office

Kalapuya Building

4500 SW Research Way, 2nd Floor, Corvallis OR 97333

541-766-6756

Mon thru Fri 8:00 am to 5:00 pm

Election Day 7:00 am to 8:00 pm

### 24-HOUR OUTDOOR BALLOT DROP BOXES

#### Kalapuya Building

Drop box in parking lot  
4500 SW Research Way, Corvallis OR 97333

#### OSU Gill Coliseum

Corner of Ralph Miller Ln and 26th St  
660 SW 26th St, Corvallis OR 97331

#### Lincoln Health Center

Drop box at center of parking lot  
121 SE Viewmont Ave, Corvallis OR 97333

#### Corvallis Public Library

Drop box next to bike rack at corner of  
6th St and Monroe Ave  
645 NW Monroe Ave, Corvallis OR 97330

#### Benton County Courthouse

Courthouse lawn on 4th St  
120 NW 4th St, Corvallis OR 97330

#### Law Enforcement Building

Near entrance on 5th St  
180 NW 5th St, Corvallis OR 97330

#### LBCC Benton Center

Drop box near main entrance  
757 NW Polk Ave, Corvallis OR 97330

#### Corvallis Community Center (C3)

Drop box near main entrance  
2601 NW Tyler Ave, Corvallis OR 97330

#### Wells Fargo Bank

Timberhill Shopping Center  
2543 NW Kings Blvd, Corvallis OR 97330

#### City Limits Market

Drop box near main entrance  
5800 NW Hwy 99W, Corvallis OR 97330

#### Adair Village City Hall

Drop box at City Hall parking lot entrance  
6030 NE William R Carr Ave  
Adair Village OR 97330

#### North Albany Shopping Center

Drop box in front of IGA Supermarket  
621 Hickory Ave NW, Albany OR 97321

#### Philomath Community Library

Drop box near main entrance  
1050 Applegate St, Philomath OR 97370

#### Monroe Community Library

Drop box at the entrance to the drive-up  
book drop in parking lot  
380 N 5th St, Monroe OR 97456

#### Alsea Community Library

Drop box on parking lot sidewalk  
19192 Alsea Hwy, Alsea OR 97324