



**Benton
County**
OREGON

OFFICIAL VOTERS' PAMPHLET

**Special District Election
May 20, 2025**

The publication and distribution of this pamphlet is coordinated by the County Clerk. The information within was provided by those who chose to participate.



**Benton County
Elections Office
Kalapuya Building
4500 SW Research Way, 2nd Floor
Corvallis, OR 97333**

Phone: 541-766-6756
E-Mail: elections@bentoncountyor.gov
Website: re.bentoncountyor.gov



**Benton
County**
**BOARD OF
COMMISSIONERS**

Board of Commissioners

Office: (541) 766-6800

Fax: (541) 766-6893

4500 SW Research Way
PO Box 3020
Corvallis, OR 97339-3020

boc.bentoncountyor.gov

Dear Benton County Voter:

Tuesday, May 20, 2025, is Special District Election Day in Oregon. As a registered voter, you will have the opportunity to exercise your right to vote on local district board positions for the districts in which you reside. Dependent on the combination of districts where you live, your ballot will include board positions for School, Educational Service, Community College, Rural Fire, Road, Park & Recreation, and other special districts. If you live in North Albany, within Benton County, you will see a measure on your ballot for the City of Albany.

The County publishes a voters' pamphlet to provide local candidates the opportunity to share their message with voters. Candidate Statements are an optional filing, and not all candidates choose to file a statement. Additionally, measure proponents and opponents have the opportunity to submit arguments for or against the local measure. An electronic version of this pamphlet is available online at: re.bentoncountyor.gov/voters-pamphlet.

Voters have three options for returning their voted ballots: 1) By Mail, postmarked no later than Election Day, and received within seven days; 2) In-person at any Oregon County Elections Office; or 3) Any Official Ballot Drop Site in the State of Oregon before 8:00 PM on Election Day, Tuesday, May 20, 2025.

Please see the last page of this pamphlet for a list of Official Ballot Drop Sites in Benton County. If you need additional information or assistance, you may reach the Elections Office by phone: (541) 766-6756; email: elections@bentoncountyor.gov; or in-person at The Kalapuya Building, 4500 SW Research Way, 2nd Floor, in Corvallis.

Sincerely,

Nancy V. Wyse

Commissioner Chair

Pat Malone

Commissioner Vice-Chair

Gabe Shepherd

Commissioner

TABLE OF CONTENTS

2	Letter from the Commissioners
3	Table of Contents
4	Translation النسخة المترجمة , 材料翻译, 한국어 번역물, Материалы на других языках, traducciones, คำแปลเนื้อหาเป็นภาษาไทย, Các bản dịch
5	Voting and Ballot Return Instructions
	Linn-Benton-Lincoln Education Service District
6	Director Zone 1 – Bill Hays and Director Zone 3 – Michael Thomson
7	Director Zone 4 – Denise Hughes-Tafen and Director Zone 4 – Camille Kaplan
	Linn-Benton Community College
8	Director Zone 2-3(A) – Stacie Wyss-Schoenborn and Director Zone 2-3(A) – Rachel Biscoe
9	Director Zone 5 – John Sarna and Director Zone 5 – Brad Longman
10	Director Zone 6-7(A) – Sherlyn Dahl
	Corvallis School District 509J
11	Director Position 1 – Charlotte Willer and Director Position 1 – Chris Blacker
12	Director Position 1 – Sami Al-Abdrabbuh and Director Position 4 – Luhui Whitebear
13	Director Position 5 – Shauna Tominey and Director Position 7 – Bernie Wang
	Greater Albany Public School District 8J
14	Director Zone 1 – Kristopher Schendel and Director Zone 1 – Brad Wilson
15	Director Zone 1 – Deanna Varner and Director Zone 2 – Stephanie Lunceford
16	Director At-Large #2 – Tim Washko and Director At-Large #2 – Marcy Hermens
17	Director At-Large #2 – Kris McLaughlin
	Philomath School District 17J
17	Director Position 1 – Kerin Konkler
18	Director Position 1 – Tom Klipfel and Director Position 3 – Todd Smith
19	Director Position 3 – Erin McMullen
	Corvallis Rural Fire Protection District
19	Director Position 1 – Tony O'Donahue
20	Director Position 2 – Christy Johnson
	Philomath Fire and Rescue District
20	Director Position 2 – Kenneth Corbin
	Measure – City of Albany
21	22-209 Renewal of the Ambulance, Fire, and Police Local Option Tax
21	22-209 Argument in Favor
22	Voter Registration Form
23	Benton County Official Ballot Drop Sites

Candidate statements and measure arguments within this pamphlet are **optional** filings. To view filings of candidates who chose not to submit a statement to be published in pamphlet, please go to re.bentoncountyor.gov.

Information provided in statements or arguments submitted by a candidate, a political party, an assembly of electors or those who support or oppose a measure have not been verified for accuracy or truth and do not constitute an endorsement by Benton County.

Attention

انتباه 注意事項 유의 사항 Внимание Atención ประกาศ Chú ý

Selected portions of this county voters' pamphlet are available in [Arabic, Simplified Chinese, Korean, Russian, Spanish, Thai, and Vietnamese.] These translations can be found online at oregonvotes.gov/BentonVP

تتوفر أجزاء مختارة من كتيب الناخبين لهذه المقاطعة باللغة العربية. يمكن العثور على هذه الترجمات عبر الإنترنت على oregonvotes.gov/BentonVP

本县选民手册的部分内容提供简体中文版本。可以访问 oregonvotes.gov/BentonVP 获取译本。

카운티 유권자 팸플릿 내 선택된 부분은 한국어로 준비되어 있습니다. 번역은 온라인 oregonvotes.gov/BentonVP 에서 찾아보실 수 있습니다.

Отдельные части брошюр избирателей этого округа доступны на русском языке. Эти переводы можно найти в Интернете по адресу oregonvotes.gov/BentonVP

Algunas secciones de este folleto para votantes del condado están disponibles en español. Estas traducciones están disponibles en línea en oregonvotes.gov/BentonVP

จุลสารผู้ลงคะแนนในเขตนี้บางส่วนจัดทำเป็นภาษาไทย ฉบับแปลเหล่านี้สามารถพบได้ทางออนไลน์ที่เว็บไซต์ oregonvotes.gov/BentonVP

Các phần được chọn trong tập thông tin cử tri quận này có bản ngôn ngữ tiếng Việt. Bản dịch có thể xem trực tuyến tại oregonvotes.gov/BentonVP

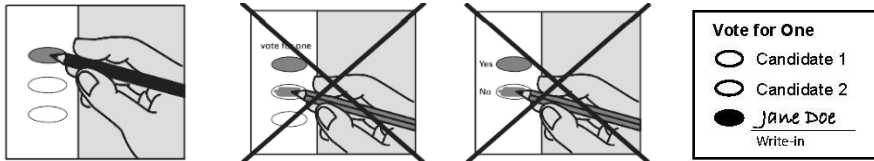
Voting and Ballot Return Instructions

Your Ballot Packet Contains

- A printed ballot on which you may vote.
- A prepaid and pre-addressed signature return envelope in which to return your ballot.

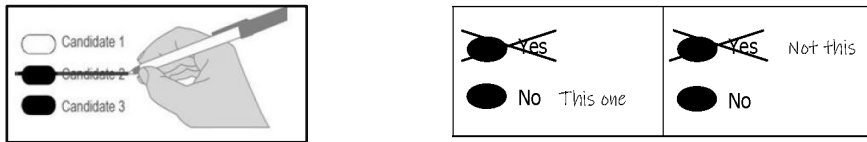
Voting Your Ballot

- Use a black or blue pen to fill in the ovals next to your choices.
- You do not have to vote on all contests.
- If you vote for more candidates than allowed or if you vote both Yes and No on a measure, it is called an overvote and your vote will not count for that candidate or measure.
- To write in a candidate who does not appear on your ballot, completely darken the oval to the left of the write-in line and write the full name of the candidate on that line.



Correcting Your Ballot

If you make an error on your ballot, you may correct it yourself. See examples below:

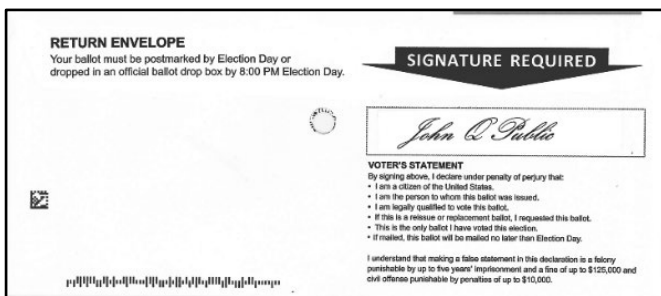


Contact Benton County Elections to request a replacement ballot if:

- You are unable to correct a mistake to make your intended choice clear.
- Your ballot is damaged or spoiled.
- You lose your ballot.

Returning Your Voted Ballot

- **SIGN** the voter's statement on the back of the signature return envelope. Your ballot will not be counted if your return envelope is not signed.
- Insert ballot into the signed return envelope.
- Seal the signed return envelope.
- **Mail no later than May 20, 2025.** Signed return envelope must be postmarked by Election Day and received no later than seven days after Election Day.
- Or place the signed return envelope in an **Oregon Official Ballot Drop Box** by **8:00 PM PDT May 20, 2025.**





**Linn-Benton-
Lincoln Education
Service District**
Director
Zone 1

**Bill
Hays**

Occupation: Retired United Methodist Minister; Board Treasurer

Occupational Background: Pastoral ministry, Special Education Bus Driver; Postal Service Letter Carrier in Lebanon

Educational Background: Accounting Certification, OSU; MDiv, Garrett-Evangelical Theological Seminary; BA, Lewis University

Prior Governmental Experience: None

My wife, Joyce, and I live in Albany where all four of our children graduated from high school. Now we have two grandchildren in the Albany school system.

I served as an ordained minister in United Methodist Churches in Oregon and Idaho. In 2024 I retired from the Jefferson UMC, though I still volunteer for their Community Food Pantry which serves Jefferson, Scio, and Millersburg. Now, I am serving my third year as the Treasurer on the Chamberlin House Board, a residential program serving individuals with intellectual and developmental disabilities.

I first became acquainted with Linn Benton Lincoln (LBL) ESD and the work they do while driving students as a Special Education bus driver for the Greater Albany Public School District. I am running for the LBL ESD Board to participate in its good work and inform the public about the importance of the ESD for our children's education.

When elected, I will

- Advocate for the over 37,000 children across 12 school districts, especially those with special needs, whose education is directly supported by the LBL ESD.
- Support the certified and classified staff who are dedicated to providing their best for the benefit of our children.

Endorsed by:

- Michael Thomson, LBL ESD Board Member
- Gabe Shepherd, County Commissioner
- Carrie Howell, Executive Director Chamberlin House
- Joy Henkle, Chamberlin House Board Chair

"In my 12 years in transportation I have had many different drivers. I count myself lucky that Bill Hays was one of them. He didn't just drive a bus, he provided a safe environment for some very special students."

-Jan Hubbard, Special Education
Bus Attendant/Transportation

Learn more at haysforzone1.com

(This information furnished by Bill Hays)



**Linn-Benton-
Lincoln Education
Service District**
Director
Zone 3

**Michael
Thomson**

Occupation: Parent

Occupational Background: Administrative

Educational Background: The Evergreen State College BA

Prior Governmental Experience: Linn-Benton-Lincoln ESD Boardmember; City of Albany Councilmember; Greater Albany Public Schools Boardmember; City of Albany Human Relations Commission; City of Albany Budget Committee

Community Experience: Treasurer, Albany Partnership for Housing & Community Development; Officer Central-Takena PTA; Volunteer Albany Schools; Volunteer St. Mary's; Boardmember Friends of Historic Albany

Growing up the son of public-school teachers, the value of education was instilled in me at a young age. Before entering Kindergarten, our daughter spent valuable time in Early Childhood Special Education with Linn-Benton-Lincoln ESD. I know firsthand how beneficial the District can be.

One year ago, I was appointed to the Board of the Linn-Benton-Lincoln Educational Service District. The ESD efficiently provides our 12 component School Districts with help in the areas of special education, early intervention, school improvement, technology and administrative services. I want to continue the work of shaping the strategic vision of the District.

My Priorities

- **Effectively provide needed services to students.** With financial challenges ahead, we need to make difficult decisions on resources while keeping educational equity at the forefront of decision making.
- **Work collaboratively** with our K-12 District partners in providing services to enable student success.
- **Employee recruitment and retention.** Making the ESD a good place to work makes for positive learning environments for our students.

Endorsements

Sara Gelser-Blouin, State Senator
Gabe Shepherd, Benton County Commissioner
Benton County Democrats
Linn County Democrats

www.thomsonforalbany.com

(This information furnished by Michael Thomson)



**Linn-Benton-
Lincoln Education
Service District**
Director
Zone 4

**Denise
Hughes-Tafen**

Occupation: Faculty, Education/ Human Development and Family Sciences

Occupational Background: Educator; Early Intervention/ Early Childhood Special Education (EI/ ECSE) Specialist

Educational Background: Ohio University, Ph.D. Education; Ohio University MA International Studies, Portland State MS (EI/ ECSE); Portland State, Graduate Certificate (Infant Toddler Mental Health); Lincoln University BS (Agriculture)

Prior Governmental Experience: Corvallis Multicultural Literacy Center, Board of Directors; Corvallis School District: DELTA; Boundary Review Committee Task Force; City of Albany, Human Relations Commission

Teacher Licensure: Special Education (preK-12).

Endorsement: Early Childhood Mental Health Family Specialist.

I am running for the position of Linn Benton Educational School District (LBL ESD), Board of Directors, Zone 4, because I believe in the power of our community to support and empower children and families. I understand that children and families thrive when they have access to quality education and comprehensive support services.

I am a mother, friend, wife and Corvallis resident. When my family first moved to this area, we received services from LBL ESD. When I began my career as an EI/ ECSE Specialist, I worked at this ESD. LBL ESD is a place of possibilities; I am committed to ensuring that all families can access these services.

I value authenticity, collaboration, and care. As a Board Member, I will work to enhance communication, support staff members and families by listening and creating policies that recognize and value them. I will work with the board, community, staff and other stakeholders to find creative solutions to funding challenges and engage with the community to understand and be responsive to changing needs and priorities.

Together we can create a future where our children, teachers, staff and families thrive.

To learn more visit:
<https://sites.google.com/view/votefordenise/home>

Endorsements:
Corvallis School Board members: Luhui Whitebear and Shauna Tominey
Linn Benton Lincoln ESD Board member: Amy Vctor
Monica Olvera Ph.D., Mica Contreras, Lynn Russell,
Catalina Contreras-Colin, Stacey "Stacia" Torres, Emily Barton,
Naomi Hartman.

(This information furnished by Denise Hughes-Tafen)



**Linn-Benton-
Lincoln Education
Service District**
Director
Zone 4

**Camille
Kaplan**

Occupation: Substitute Teacher; Farmworker

Occupational Background: Business Owner, Honey Processing and Sales

Educational Background: Oregon State University (BA Geography)

Prior Governmental Experience: Philomath School Board Policy Subcommittee

I'm a lifelong Benton County resident. If you recognize me, it's probably from my 42 years (on and off) of involvement at local farmers' markets, most recently back where I started, helping out on my parents' farm, Oven & Earth. I also have two teenagers attending Philomath High School, and MANY of my friends and family members are educators.

For the past three years, I've been substitute teaching almost every day at Philomath Middle School, my alma mater, where I work to educate students on a wide variety of subjects. In every class, I have opportunities to support special education students and the staff members who assist them, and I regularly interact with LBL ESD professionals who work with students in our local schools. I'm a strong advocate for the success of all students, especially those from historically marginalized communities.

I have been a frequent school board meeting attendee since 2016, and in 2018-19, I served on the Philomath School Board Policy Subcommittee where we reviewed and discussed hundreds of pages of district policy alongside an Oregon School Board Association (OSBA) representative and with the support of their lawyers. This experience informed my understanding of public meetings law and the process of establishing and revising school policy, one of the key roles for an LBL ESD director.

I look forward to working collaboratively with other directors to advance the mission of LBL ESD and to provide essential technology, business, and professional support services to area schools and all students who will benefit greatly from them.

Endorsed by Benton County Democrats

(This information furnished by Camille Kaplan)



**Linn-Benton
Community
College**
Director
Zone 2-3(A)

**Stacie
Wyss-Schoenborn**

Occupation: Management
Occupational Background: 25+ years in various executive management capacities in the financial services industry
Educational Background: Marylhurst University, M.B.A.; University of Oregon, B.A. Political Science
Prior Governmental Experience: City of Albany, Parks & Recreation Commission, 2019-2022 – Appointed; Business Oregon Commission, 2024-present – Appointed; LBCC Board of Education, Zone 2-3A, 2022-present – Elected

Dear Voters,

I am honored to seek re-election to the Board of Education at Linn-Benton Community College. My commitment to ensuring that every student has access to an excellent education remains steadfast. I believe education is a powerful tool that enriches our communities and strengthens our local economy.

As a Board member, I will continue prioritizing **inclusion, strong community partnerships, and innovative approaches to education.**

- **Expanding Access:** Every student deserves the opportunity to succeed. I will champion policies that enhance access to high-quality education and resources for all.
- **Strengthening Community Connections:** Collaboration between students, families, businesses, and community organizations is vital to student success. I will work to build stronger partnerships between LBCC and our community to help students achieve their educational and career goals.
- **Fostering Innovation:** The future of education is evolving, and we must stay ahead. I will advocate for forward-thinking programs that prepare students for an ever-changing workforce.

After serving on LBCC’s Foundation Board for five years and now as a current Board of Education member, I have the experience and dedication to continue making a meaningful impact. I am passionate about education and committed to serving our students, families, and local employers. I would be honored to earn your vote.

Thank you for your support.

(This information furnished by Stacie Wyss-Schoenborn)



**Linn-Benton
Community
College**
Director
Zone 2-3(A)

**Rachel
Biscoe**

Occupation: Paid Leave Oregon Public Service Representative - Oregon Employment Department; Finance & Development Director - South Benton Food Pantry
Occupational Background: Student Life & Leadership Student Engagement Leader-Linn Benton Community College (2023-2024); Wildland Firefighter - Philomath Fire & Rescue (2021); On-site Resident Firefighter - Philomath Fire & Rescue (2021); Certified Emergency Medical Responder - Philomath Fire & Rescue (2020-2021)
Educational Background: Human Development & Family Studies Associate's Degree - Linn Benton Community College; Firefighter 1 & 2 Certifications - Linn Benton Community College; Emergency Medical Responder Certification - Oregon Health Authority EMS Program
Prior Governmental Experience: Oregon Higher Education Coordinating Commissioner (2023-Present); LBCC Student Leadership Council President (2023-2024); Philomath Fire & Rescue - Grant Writing & Budget (2019-2021)

Candidate Statement:

Throughout my life, I’ve been committed to advocating for higher education affordability and food security. Growing up, I learned the power of helping others and the impact it has on individuals and communities. I’m passionate about ensuring that Linn Benton Community College remains a vibrant, inclusive institution that meets the evolving needs of our diverse population.

Priorities:

Advocate for Higher Education Affordability - Work to reduce financial barriers, ensuring all students have access to affordable education.

Enhance Food Security Support - Expand initiatives that address food insecurity among students, helping them focus on their education without unnecessary stress.

Strengthen Community Engagement - Build stronger connections between the college and the local community to ensure the college meets the diverse needs of all learners.

Endorsements:

- Melissa Goff, Oregon Teacher Standards and Practices
- Pat Malone, Benton County Commissioner
- Alex Johnson II, Albany Mayor
- Dr. Ramyia McGhee, Albany City Councilor
- Marilyn Smith, Albany City Councilor
- Andrew Struthers, Former Corvallis City Councilor
- Terry Weiss, former member, LBCC Board of Directors
- Mark Weiss, former president, LBCC Faculty
- Elizabeth Elliot, Philomath Park Advisory Board
- Sara Cash, Project Coordinator, Alsea Community Action Collaborative

For more information, go to <https://sites.google.com/view/biscoe-for-lbcc/home>.

(This information furnished by Rachel Biscoe)



**Linn-Benton
Community
College**
Director
Zone 5

**John
Sarna**

Occupation: Civil Engineer (retired)

Occupational Background: Civil Engineer in State government specializing in water resources and water quality (26 years); Systems Engineer for Motorola; Computer Specialist for Allstate Insurance; Combat Infantryman in Viet Nam

Educational Background: Doctor of Environmental Science and Engineering (UCLA, 1990); MS in Electrical and Computer Engineering (University of Massachusetts, 1979); BS (University of Illinois, 1974); still taking classes of interest at OSU and LBCC

Prior Governmental Experience: Linn-Benton Community College, Director, Zone 5 (elected, incumbent); Benton County Environmental Issues Advisory Committee (appointed); Technical Advisory Committee to Justice System Improvement Program (appointed)

Current Community Involvement: Community Emergency Response Team; Philomath Lyons Club; Mary's River Grange; ESE Alumni Association (Secretary), and Republic Service's Master Recycler Program.

Why I serve on the LBCC Board: I believe community colleges like LBCC are the bedrock of our higher education system, offering affordable pathways to solid careers and lifelong learning for people of all ages and backgrounds. Having attended several community colleges, I've experienced their transformative power firsthand. Over the past four years, I've worked to keep tuition low while ensuring LBCC's financial strength. I championed a new Agricultural Center to meet our region's needs, expanding training in agriculture, crop, and animal sciences. Looking ahead, my focus is navigating among federal and state requirements, like DEI, to secure funding without sacrificing access or student success. I'm committed to keeping LBCC a place where everyone can thrive.

If elected, my goals remain:

- Make LBCC accessible to everyone, providing prerequisites as needed for student success
- Ensure LBCC classes are transferable to OSU and other 4-year colleges
- Expand and improve career technical education programs
- Promote continuing education and extended learning classes
- Outreach to rural communities, with online access where attendance is infeasible
- Maintain high school partnership programs, improving outreach and providing no-cost access to college classes
- Keep tuition low and LBCC financially solvent while growing to serve this vibrant community

(This information furnished by John Sarna)



**Linn-Benton
Community
College**
Director
Zone 5

**Brad
Longman**

Occupation: Technical Director (U.S. President's Malaria Initiative); Instructor, Oregon State University College of Health (Public Health & Epidemiology)

Occupational Background: I am a public health epidemiologist who manages global health programs funded by CDC, the U.S. Department of State, and private donors.

Educational Background: Ph.D. Global Health & M.P.H. Epidemiology, Oregon State University; M.B.A. Healthcare, Johns Hopkins University; B.A., University of Virginia

Prior Governmental Experience: Corvallis Rural Fire Protection District

As federal programs transition to a new administration, I have provided **leadership to sustain public funding** for infectious disease prevention worldwide. I also serve as an **instructor at Oregon State University**, educating future public health professionals.

I am running for the LBCC Board of Education because I believe in the power of community colleges to provide accessible, high-quality education that prepares students for successful careers **without the burden of excessive student debt**.

LBCC has a unique opportunity to equip students with the skills they need in our modern, fast-changing economy—whether in skilled trades, healthcare, education, small business, or other essential industries. Growing up in a **working-class background**, I know firsthand how education transforms lives, and I am committed to ensuring every LBCC student has a clear path to **stable, living-wage jobs in our community**.

If elected, I will work to:

- Strengthen career and technical education programs.
- Expand high school partnerships for affordable college credit.
- Keep tuition low while ensuring LBCC's financial sustainability.
- Increase outreach to Latino and low-income communities.
- Strengthen collaboration between LBCC and OSU to expand opportunities for transfer credits.

We are living in a time of significant change, and LBCC plays a key role in shaping a sustainable, skilled workforce. **Strong leadership and a clear vision** can ensure every student—regardless of background—has the opportunity to succeed.

I am **proudly endorsed by the Benton County Democrats and Benton County Commissioner Gabe Shepherd**. I would be honored to have your support!

(This information furnished by Brad Longman)



**Linn-Benton
Community
College**
Director
Zone 6-7(A)

**Sherlyn
Dahl**

Occupation: Retired

Occupational Background: Director of Benton County Community Health Center (2006-2020); Executive Director of Family HealthCare Center in Fargo, ND (1993-2006); Community Health Nurse at Fargo Cass Public Health; and Registered Nurse in various hospital settings including Neonatal Intensive Care, Pediatrics, and a rural hospital in Minnesota

Educational Background: St. Luke's School of Nursing, Diploma RN; Minnesota State University Moorhead, Bachelor of Science in Nursing (BSN); University of Minnesota School of Public Health, Masters in Public Health (MPH)

Prior Governmental Experience: Public employee as Director of Benton County Community Health Center, 2006-2020

I have had the privilege of serving on LBCC's Board of Education for nearly four years. I am proud to be part of the colleges unwavering commitment to offer educational opportunities for all and its dedication to the success of every student. Over the past year, LBCC completed a comprehensive Strategic Planning process with broad input from leadership, staff, students, and community partners. I will actively work to implement the goals identified. As a previous health administrator I will use my skills and experience in balancing financial constraints with the needs of individuals, families, and communities.

My focus will be on the following areas. Student recruitment and success, assuring diverse educational opportunities including certificate programs, associate degrees, and pathways to bachelor degrees. Financial sustainability through balanced budgets and building a reserve. In times of financial uncertainty, my commitment to align LBCC programs with the employment needs of our communities is more important than ever. I am excited to support the implementation of a Bachelors in Nursing program and the continued development of the Agricultural Center. My time on the LBCC Board has deepened my commitment to the college and I look forward to continuing to assure LBCC is a valuable community resource.

Endorsed by Benton County Democrats

(This information furnished by Sherlyn Dahl)



Corvallis School District 509J

Director
Position 1

Charlotte Willer

Occupation: Farmer (grass-fed beef); Real Estate Broker (Windermere); Business Owner (aquatic restoration construction)

Occupational Background: Corvallis School District Classroom volunteer (509J); Photographer (Charlotte Trask Photography); Marketing Manager (Earth Advantage); Volunteer (Corvallis for Refugees)

Educational Background: Corvallis High graduate; Oregon State University; Art Institute of Portland, Bachelor of Science
Prior Governmental Experience: None

A strong public education system is the cornerstone of a successful democracy.

Corvallis was once known for its exemplary public school system. I was a beneficiary of this. Now, as a parent of two, I have experienced first-hand a system that falls short. Our wonderful teachers struggle to control classrooms. In the name of educational fairness, individual learning and extra-curriculars are being removed. I believe in educational equity, which means each child receives what they need to develop to their FULL academic, creative and social potential.

Over the next few years, we can expect huge budget shortfalls. This is due to poor planning and a loss of students. I want to ensure our teachers and students are the priority when cuts are made. In addition, I want to see the district address the loss of parent confidence, which is reflected in the number of students transferring out of our public schools. Despite a population growth in Corvallis, between 2019-24 the Corvallis School District lost 12.5% of its student body, while private schools increased their population by 33% (Ashbrook) and 20% (Santiam Christian.) Philomath School District has seen little change in enrollment with 1,649 students enrolled in 2019, and 1,640 in 2024.

I want to help ensure we do our absolute best, as a community, for our children and that each one is given tools to excel.

We Support Charlotte Willer:

Our Revolution – Corvallis Allies
Eric Sharp – Kathryn Jones Harrison Elementary, Linus Pauling & CHS parent
Joan Gross – Professor Emerita
Loren Wisniewski – Cheldelin & Crescent Valley HS Parent
Sheena Christenson – Adams Elementary parent
Katelyn Banta – Garfield Elementary parent

(This information furnished by Charlotte Willer)



Corvallis School District 509J

Director
Position 1

Chris Blacker

Occupation: Information Technology & Business Operations Consultant

Occupational Background: Director of Technology, K-8 Central Park School for Children (Durham, NC); Director of Technology, The Exploris School (Raleigh, NC); High School Math Teacher (Alamance County, NC)

Educational Background: BA, Mathematics, University of North Carolina - Chapel Hill

Prior Governmental Experience: None

As a parent of two elementary-aged children in the district, I'm running for Director 1 to help ensure our schools stay strong, supported, and responsive to the changing needs of students and families. I've spent years working and volunteering in classrooms, partnering with educators, and expanding access to enrichment and academic support programs — and I believe Corvallis can do better.

Like many districts in Oregon and across the country, we're experiencing a persistent decline in student enrollment, while at the same time allowing administrative costs to rise. As we plan for the future, we need to ensure our resources are focused where they make the greatest impact: *in the classroom, with students and teachers.*

Right now, we have a real opportunity to strengthen our schools by restoring access to core programs like art and library, expanding access to additional math and science courses, providing additional support where class sizes have grown, and ensuring Title I schools receive what they need to close opportunity gaps. By working collaboratively, using data wisely, and prioritizing student outcomes, we can make thoughtful decisions that support both **equity** and **excellence**.

Priorities:

- Reduce class sizes and provide more in-class support
- Restore full access to library and arts programs
- Ensure Title I, ESSA, and SSA laws are being implemented equitably
- Expand access to academic enrichment in reading, math, and science
- Focus funding on student learning, not administration

(This information furnished by Chris Blacker)



Corvallis School District 509J

Director
Position 1

**Sami
Al-Abdrabbuh**

Occupation: Engineer; Oregon State University Instructor
Occupational Background: Small Business Owner; Nonprofit Leader

Educational Background: MS & PhD, OSU

Prior Governmental Experience: President, Oregon School Boards Association; Chair, Corvallis School Board; Director, National School Boards Association

SAMI IS THE LEADER WE NEED

As a teacher and engineer, Dr. Sami Al-Abdrabbuh knows leaders are accountable for outcomes. As an education leader, project manager with HP, and union member, we can count on Sami to turn ideas into action and ensure progress.

DELIVERING PROGRESSIVE RESULTS

Sami brings people together to achieve school district and community goals, including:

- Establishing protections so that students of **all gender and racial identities** feel safe and welcome.
- Partnering with the County to build a **community health center**.
- **Banning guns** in Corvallis schools.
- Offering **rental aid** for students requiring **stable housing**.
- Installing 638kW **solar power** with Solarize Corvallis.

OUR COMMUNITY WANTS ACTION

Sami aligns values with creating consensus to achieve progress. He will:

- Expand **services** to ensure **student success**.
- **Defend civil rights for students, families, and educators** from those attacking democracy and seeking to take away freedoms.
- Establish more **workforce housing and ensure working families can afford to live in Corvallis**.
- Ensure community **access to public swimming pools**.
- Advance school district efforts to **cut climate pollution and develop clean energy**.
- Keep Corvallis a special place to live.

THOSE WE TRUST, TRUST SAMI!

Proudly Endorsed by:

Corvallis Education Association

OSEA Corvallis Chapter 2

Western State Carpenters Union

United Food and Commercial Workers Local 555

Benton County Democrats

Oregon Working Families Party

Benton County Commissioners **Pat Malone, Nancy Wyse, and Gabe Shepherd**

Corvallis School Board members **Luhui Whitebear, Shauna Tominey, Terese Jones, Christine Hawkins, Judah Largent, and Bernie Wang**.

Oregon Futures Lab; Color PAC

Next Up Action Fund; Stand for Children

Full List at: samioregon.com

Offer **support** and **share your thoughts** with Sami:
(541)283-6611 votesami.com

(This information furnished by Sami For Oregon)



Corvallis School District 509J

Director
Position 4

**Luhui
Whitebear**

Occupation: Assistant Professor

Occupational Background: Tribal Higher Education

Educational Background: OSU: PhD, MAIS, BS

Prior Governmental Experience: Corvallis School Board, OSBA Board, CBCN Tribal Council

TRANSFORMING WORDS TO ACTION

I am running for a second term to continue my advocacy for students and staff often left in the margins. The policies we uphold change and save lives. Over the past term I:

- helped with community education about the budget
- increased community participation with the new board goals
- helped establish the Indian Education Program (additional federal dollars)
- helped update the bias reporting system in response to student concerns

I am rerunning because I know education has the power to create a better tomorrow.

COMMITMENTS

FUNDING CRISIS

- As a school board member, I will continue educating the community to help bring our voices together to work collectively on budget advocacy at the state level.

EQUITY STILL MATTERS

- We need to remain strong in our commitments so students and educators know they are valued and materials taught matter.

PUBLIC EDUCATION IS THE HEART OF THE COMMUNITY

- Now is not the time to lose sight of local commitments to our schools. I understand public education is relied upon to both educate and support students holistically.

Endorsements

State Senator Sara Gelsler Blouin

State Representative Tawna Sanchez

Benton County Commissioners Gabe Shepherd, Nancy Wyse, Pat Malone

Corvallis Mayor & City Council Charles Maughan, Alison Bowden, Ward 6

Albany Mayor Alex Johnson II

Corvallis School Board Shauna Tominey, Sami Al-Abdrabbuh, Bernie Wang, Chris Hawkins, Judah Largent, Terese Jones

Organizations Corvallis Education Association, OSEA Corvallis Chapter 2, UFCW Local 555, Latino Network Action Fund, Basic Rights PAC, Next Up Action Fund, Oregon Futures Lab, Color PAC, Stand For Children, Our Revolution-Corvallis Allies, Oregon Working Families Party, Pacific Green Party, Linn-Benton Chapter, Benton County Democrats

Community Chas Jones, Dr. Melissa Bird, Nichole Hoffman, Dr. Denise Hughes-Tafen

WhitebearForCorvallis509j.org

(This information furnished by Luhui for Corvallis School Board)



Corvallis School District 509J

Director
Position 5

Shauna Tominey

Occupation: Associate Professor, Human Development and Family Sciences

Occupational Background: Educator; Family Services Professional

Educational Background: University of Washington, BA/BS (Music/Psychology); Kansas State University, MS (Family Studies); Oregon State University, PhD (Human Development & Family Studies)

Prior Governmental Experience: Corvallis School District Budget Committee (2021); Corvallis School Board (2021-present); Oregon's Alcohol and Drug Policy Commission Prevention Committee (2024-present)

Corvallis is a community I care deeply about. As a Corvallis K-12 graduate and district parent, I am running for re-election to give back to the community I call home. In the years ahead, we need consistent and thoughtful leadership to ensure every student has what they need for success in school and beyond.

As a School Board member, my priorities are to:

- **Ensure students receive a well-rounded, responsive public education** that meets their diverse learning needs, celebrates their identities, and supports social, emotional, academic, and professional growth.
- **Advocate for funding** that preserves and expands meaningful academic and real-world learning opportunities, including career and technical education, languages, arts (e.g., music, theatre, visual arts), ecoliteracy, comprehensive health education, and more.
- **Promote authenticity, transparency, and collaboration**, ensuring decision-making is guided by student, staff, and family experiences.
- **Strengthen communication and engagement** to ensure district goals, policies, and budget decisions foster a district and community that is an exceptional place to live, work, and learn.

**Together, we can create a school district where:
everyone is welcome,
every family has a voice,
every educator feels supported,
and every student thrives.**

Learn more at www.shaunafor509j.org

Among others, Shauna is endorsed by:

OSEA Corvallis Chapter 2; Corvallis Education Association; Stand for Children; Next Up Action Fund; Oregon Futures Lab; Color PAC; Oregon Working Families Party; Benton County Democrats; Corvallis School Board: Sami Al-Abdrabbuh, Judah Largent, Bernie Wang, and Luhui Whitebear; Dr. Denise Hughes-Tafen, Faculty, Education/Human Development and Family Sciences; Gabe Shepherd, Benton County Commissioner

(This information furnished by Shauna Tominey)



Corvallis School District 509J

Director
Position 7

Bernie Wang

Occupation: Retired U.S. Navy Captain; Administrator, Oregon State University

Occupational Background: U.S. Navy Officer; Higher Education Administration; Attorney

Educational Background: B.A., Political Science, University of Washington; J.D., University of the Pacific, McGeorge School of Law; M.A., Strategic and National Security Studies, Naval War College

Prior Governmental Experience: Corvallis School Board Member (Appointed November 2024)

Committed Leadership, Equitable Outcomes, Responsible Stewardship

As a first-generation American, I have had the privilege of serving as a public servant for my entire adult life. First with 33 years in the U.S. Navy, and now for the State of Oregon. My service has always been driven by gratitude and a desire to give back to the nation that gave my family the chance to build a better life. I was appointed to the Corvallis School Board in November 2024 and am committed to continuing the work I've started: keeping our schools equitable, student-focused, and financially sound.

Priorities

- **Equity & Student Success** – Every student, regardless of background, deserves high-quality education. I will ensure educators and students have the resources needed to maximize student outcomes and opportunities, removing barriers and meeting our students where they are.
- **Supporting Educators & Staff** – I support fair wages, a safe and accepting workplace, and strong collective bargaining rights.
- **Fiscal Leadership** – In challenging fiscal times, I will make strategic, transparent budget decisions that prioritize student outcomes and equity, while maximizing student performance and learning. I will focus on long-term sustainability and ensure public resources are used wisely—with accountability and effect.

I approach public service through my "shipbuilding" philosophy—Leadership, Stewardship, and Relationships. Leadership isn't just being out front—it's also knowing when to support from the middle or behind. Stewardship means using resources wisely. Relationships are built by listening and collaborating. Like a well-built ship, a strong school system requires planning, teamwork, and a clear vision.

Endorsed by: Corvallis Education Association, OSEA Chapter 2, Stand for Children, Benton County Democrats

(This information furnished by Bernie Wang)



**Greater Albany
Public School
District 8J**
Director
Zone 1

**Kristopher
Schendel**

Occupation: Senior Code Compliance Officer, City of Albany
Occupational Background: Assistant Manager
Educational Background: Executive Masters of Public Administration, PSU (In Progress); MA in Education, WOU; AA General Studies, LBCC
Prior Governmental Experience: Albany Police Association (Treasurer); Fish of Albany Board of Directors

I am a parent, educator, and community leader, and I'm running for the Greater Albany Public School (GAPS) Board because I believe in the power of collaboration and am committed to excellence in education.

Growing up with a single mother who worked her way through school, I saw firsthand how education changes lives. I earned my master's degree in education from Western Oregon University because I believe in the power of learning. Now, as a Senior Code Compliance Officer, I actively unite communities, dismantle barriers, and create innovative solutions that bring diverse groups together.

The recent educator strike sent ripples throughout the community that are still felt today. This has led to a divide and decreased trust and collaboration between the educators, administration, school board, and community.

Parents deserve a say in their children's schooling, and educators must be heard and supported. I will move conversations out from behind closed doors. I advocate for open and honest communication to make decisions based on the needs of *all* community members.

GAPS needs leadership that listens, collaborates, and takes action. I am ready to serve you and this community and make GAPS better than ever.

As a member of the GAPS Board of Directors, I will:

- Put community needs first.
- Focus on school safety.
- Work tirelessly to bring all stakeholders back to the table.
- Welcome differing voices.
- Strive to find common ground that will benefit all.

We are conservatives, moderates, and progressives, and we endorse Kristopher for GAPS:

- Mayors Alex Johnson II (Albany), Sharon Konopa (former Albany), and Loel Trulove (Tangent).
- Benton County Commissioner Gabe Shepherd
- SMART Local 16

To learn more, visit: www.KristopherSchendel.com

(This information furnished by Kristopher Schendel)



**Greater Albany
Public School
District 8J**
Director
Zone 1

**Brad
Wilson**

Occupation: Small Business Owner
Occupational Background: Commercial Truck Driver; Construction; Sales; Electronics Repair; Local Business Owner
Educational Background: West Albany High School 1980; University of Oregon, BS in Business with Emphasis in Marketing
Prior Governmental Experience: Greater Albany Public School Board 2021 to Present

Brad Wilson: Students First!

Growing up in a blue-collar family, Brad Wilson learned the importance of a quality education combined with a strong work ethic. He made the most of hard-working conditions and long hours. This background made it possible for him to own and operate multiple small businesses.

A product of Albany schools, Brad Wilson knows our district has incredible students, parents, teachers, administrators, and community partners. Now, Brad wants to continue giving back to our community by serving a second term on the GAPS School Board.

Fiscal Responsibility

Hard working Albany families want to know that their money is being spent wisely and for the full benefit of their children's education. Brad will continue to scrutinize school budgets and to work with the Administration and Unions to ensure that your tax dollars benefit our students.

Looking Back & Going Forward

Brad has helped restore the District in the post-pandemic environment. In Brad's first term some of his achievements were: students got back to classrooms and playing sports, brought letter grades back to middle schools, brought back in-person testimony at Board Meetings, improved student lunches, and more. Going forward, Brad will use his knowledge of the community and the complex issues facing the District to keep the focus on Students First!

Please vote to re-elect Brad Wilson to the Albany School Board

(This information furnished by Brad Wilson)



**Greater Albany
Public School
District 8J**
Director
Zone 1

**Deanna
Varner**

Occupation: Public School Teacher, Lebanon Community School District

Occupational Background: Public School Teacher since 1995 with experience at every grade level from pre-first to college. Served as a TOSA (Teacher on Special Assignment), acting as Teacher Leader and Mentor for new/existing educators. Served as an Adjunct French Instructor at Linn Benton Community College.

Educational Background: M.A. Teaching, Eastern Oregon University (French Endorsement); B.A. French, Humboldt State University; Biblical Studies, Puget Sound Christian College

Prior Governmental Experience: None

Professional Activities and Community Service

- AVID (Achievement Via Individual Determination) Co-Coordinator
- TAG Coordinator – Lebanon Community School District
- 25-year involvement with Washington State Youth Conservation Camps: Instructor, Assistant Director, and 10-year Board President of Girls Camp
- Coach, Oregon Battle of the Books (11 years); State Champions, 2017
- Guest Presenter (Mid-Valley Reading Association and Oregon Reading Association)
- Guest Preacher for Lebanon First United Methodist Church
- Lebanon Educator Association Union Activities- Executive Council Member, Oregon Educator Association Representative

Deanna Varner
Students First, Always
Integrity
Transparency

A Drive to Serve:

I bring a **three-fold understanding** of issues at hand to the board as an educator, a parent/grandparent and an invested community member, and I strive to serve all stakeholders with conviction tempered with real life experience.

I offer a **balanced perspective** rooted in everyday and life-long experiences shared by our diverse community—experiences that transcend political or ideological lines.

I bring **hard-won skills and insights** gained through decades of dedication—qualities we need at the board level to secure the best possible future for our students and community.

Policy Focus:

1. **Rebuilding** trust within the community and staff through honest and transparent communication, utilizing multiple forums and encouraging community discourse and involvement.
2. **Pursuing and ensuring** a balanced, comprehensive budget by placing students first, always.
3. **Ensuring** that the mission of GAPS - Building Bridges to Lifelong Learning And Brighter Futures - is being upheld.

Endorsements: Greater Albany Education Association

(This information furnished by Deanna Varner)



**Greater Albany
Public School
District 8J**
Director
Zone 2

**Stephanie
Lunceford**

Occupation: Mortgage Loan Originator at Nexa Mortgage

Occupational Background: Mortgage Loan Originator; Fitness Instructor; Make-up Artist; Hair & Nail Tech; Secretary; DJ

Educational Background: Phagens School of Beauty; Certification classes Knowledge Coop and BeachBody; Some college classes at Linn Benton Community College

Prior Governmental Experience: None

As someone who has been a part of the Albany community for nearly 30 years and has raised my children in Albany schools, I am invested in seeing our schools succeed. As a volunteer at Albany Civic Theater, I have had the privilege of working with some incredible youth and gifted educators. This experience has given me hope for our community's future and inspired me to fight for a better one.

- I believe that strong schools are the building block for strong communities.
- I believe that all students, educators, and families should feel seen and heard in their communities' schools. I pledge to be a bridge between the school board, educators, students, parents, and the community.
- I pledge to be a voice for our special needs families, ensuring that they do not get left out of the conversation.
- I believe prioritizing the safety and well-being of students, educators, and staff will decrease student absenteeism and improve learning outcomes. I pledge to prioritize school safety for all.
- I believe that student mental health should be taken seriously and that more needs to be done to offer better mental health support to students. I have experienced firsthand how school related anxiety affects a child and know that when students can get the help they need, they can focus more on learning. I pledge to be an advocate for improving and protecting both the physical and mental well-being of students.

(This information furnished by
Stephanie Lunceford/Stephanie for GAPS)



**Greater Albany
Public School
District 8J**
Director
At-Large #2

**Tim
Washko**

Occupation: Director of Supply Chain

Occupational Background: 25 years heavy manufacturing acting as Plant Manager, Superintendent of Operations, Quality Engineering

Educational Background: BS in Materials Science and Engineering; Masters in Business Administration, Pennsylvania State University

Prior Governmental Experience: GAPS Budget Committee

As a candidate for the school board, I believe in the importance of providing a high-quality education that prepares all students for success in a changing world. I am committed to ensuring that our schools offer a safe, supportive, and disciplined environment where students can thrive academically and socially.

As a father of three, I see tremendous value of parental involvement and the role of the family in the educational process. Parents should have a voice in their child's education, and it is essential that we support parents' right to make informed decisions for their children's future. I also believe that schools should respect and uphold the values that many families hold dear while maintaining an inclusive and respectful learning environment for all.

We need to tirelessly pursue raising the academic levels of all students to ensure their success as adults. The role of the school board is to strengthen and support our amazing teachers and administrators. To that end, I will use my extensive experience in partnerships to ensure the success of our teachers, students, and community.

I will continue to promote fiscal responsibility, ensuring that taxpayer dollars are spent wisely, and advocating for policies that focus on efficiency and accountability. We should prioritize initiatives that raise academic standards, promote individual responsibility, respect for authority, and the development of strong character.

I am dedicated to making collaborative, informed decisions that support our teachers, benefit our students, and uphold the integrity of our educational system. Together, we can build a future where our children are well prepared for success and the values of our community are respected and upheld.

Learn more at: timforgaps.com

(This information furnished by Tim Washko)



**Greater Albany
Public School
District 8J**
Director
At-Large #2

**Marcy
Hermens**

Occupation: Retired

Occupational Background: Elementary School Office Manager

Educational Background: Central Linn Schools; LBCC

Prior Governmental Experience: None

I care deeply about our local community. Growing up locally, my dad taught us the importance of being civic-minded and helping others. These lessons shaped my **22 years in education** and inspired me to run for the Albany School Board.

Throughout my career, I've committed to keeping the education and well-being of each student at the heart of every decision. I believe in common-sense solutions centered on safe and healthy learning environments and opportunities for all students.

Education is the cornerstone of our local communities. It is crucial that we come together to provide them with the best education possible.

Students First

We must approach decisions through a lens focused on meeting students' needs, not on what is comfortable for adults.

Academic success is achieved when every student feels supported to learn and grow. Making student-focused decisions requires us to be aware of, and responsive to, all barriers that affect our students.

Safe Schools

Stable learning environments foster positive social development, maximize students' ability to access their education, and promote overall well-being. This is essential for both students and staff. **We must do more to improve school safety**, including addressing student behavior and reducing class sizes.

Community Engagement

Decisions should be based on solid information guided by our district's core values. Input from students, parents, staff, and community members is important so that all perspectives can be considered. **Transparency and collaboration** should be part of all decisions that we make.

Contact Marcy: marcyhermensforgaps@gmail.com

Partial List of Endorsements:

Greater Albany EA	Greater Albany ACE
OSEA, Chapter 2	IBEW 280
SMART Local 16	Jason and Heather Mier, J&H Auto
Stan Cuzick, Complete Ag	Tonja Everest
Pat Monson	Anna Marie Gosser, Principal
Loel Trulove, Tangent Mayor	

(This information furnished by Marcy Hermens)



**Greater Albany
Public School
District 8J**
Director
At-Large #2

**Kris
McLaughlin**

Occupation: Retired

Occupational Background: Classroom Teacher, 38 years

Educational Background: BA in English from University of Oregon; Interdisciplinary Teaching Master's from University of Oregon

Prior Governmental Experience: None

The Greater Albany Public Schools (GAPS) have been through turbulent times for the past several years under the leadership of the current board. It is time for a change of leadership.

School boards are elected by the people and must answer to them. Public comment at board meetings should be encouraged and welcomed, not cut off and banned as was the longstanding practice of the current school board. The current school board has failed to listen to the public, and to accomplish even routine functions without drama:

- They lagged behind on purchasing instructional materials for classrooms.
- They delayed contract negotiations which ended in a disruptive strike.
- They spent far too much on buying out contracts and maintain an unnecessarily large reserve fund.

All of this shows a lack of financial understanding and misplaced basic priorities. Student safety is basic. Teaching materials are basic. These things must be funded.

I have 38 years of classroom experience as a teacher. Over the years, I have worked under many different administrators and with many different school boards. I have seen them succeed and I have seen them fail. This has given me perspective on what makes schools work well. This experience, along with my ability to work with a variety of people and see projects through, will make me an asset to the GAPS Board.

A vote for me is a vote for change. It is a vote for leadership without drama, for improved communication with the community, and for sensible management of resources.

To learn more about me, my vision for GAPS, and to see a list of endorsements, please to my website:
mclaughlinforgaps.com

I hope I can earn your vote!

(This information furnished by Kris McLaughlin)



**Philomath
School
District 17J**
Director
Position 1

**Kerin
Konkler**

Occupation: Family Nurse Practitioner, Pediatric Surgery

Occupational Background: Family Nurse Practitioner, Sleep Medicine, Corvallis Clinic; Registered Nurse, Intensive Care Unit & Progressive Care Unit, Good Samaritan Hospital, Dayton OH

Educational Background: University of Cincinnati, MSN; University of Cincinnati, BSN; Allegheny College, BA

Prior Governmental Experience: None

I am running for Philomath School Board, Position 1. My husband and I moved to Philomath from Ohio in 2013 and we have 2 children, both of whom attend Philomath Schools.

As our children have progressed through the school system, I have seen first-hand the truly wonderful staff and teachers that we have in Philomath. One of my children has an IEP, and we have really been struck by the skill, empathy, and knowledge that all the people we've interacted with in the school system have displayed. The experiences we have had turned something that could have easily been overwhelming into something that seems manageable and positive. I've seen my child blossom intellectually as a result, and we have felt supported every step of the way.

My goal for being a board member would be to focus on what the District's amazing staff needs in order to continue providing top-notch education and support to our many different students. I am committed to working towards a plan that promotes Philomath School District as a place where people want to come teach & choose as their family's school district. We owe it to the district staff to provide supplies & support, and we owe it to every student to provide a system that works with them as individuals.

My experience working in healthcare & leadership as a FNP with the Corvallis Clinic—and now PeaceHealth—has given me a unique understanding into the community. My current experience specializing in pediatric surgery also gives me additional insight into the world of children. I would be honored to work with the school district and serve my community.

(This information furnished by Kerin Konkler)



**Philomath
School
District 17J**

Director
Position 1

**Tom
Klipfel**

Occupation: Retired Supply Chain Professional
Occupational Background: Planning and Inventory Manager (Agility Robotics); Supply Chain Manager (HP); Program Manager (HP); IT Manager (HP); Director of Operations (Videx); Planning Development Director (HP); Supply Chain Development Manager (HP); E-commerce Channel Development Manager (HP); Manufacturing Planner (HP)
Educational Background: M.S. Management, Purdue University; B.S. Aeronautical Engineering and B.S. Mechanical Engineering, University of California, Davis
Prior Governmental Experience: Philomath School District: School Board Director (2007-17), Board Chair (2015-17), Vice Chair (2011-12), Budget Committee (2008-17), Bond Oversight Committee Secretary (2010-13), Long-range Facilities Committee (2007); Philomath Middle School: Site Council (2006 - 2013); City of Philomath: Budget Committee (1998-09), Chair (2003-08)

Community Volunteer Work:

- Boy Scout Troop 161, Scoutmaster (2010 – Present)
- Philomath Performing Arts Benefit Fund, Treasurer and Founding Board Member, (2017 – Present)
- Philomath Community Services, Board Member (2021 – Present) and Treasurer (2023 – Present)
- Cub Scout Pack 161, Den Leader (2002-07) and Committee Chair (2004-07)
- PES, End-of-year Slide Show Coordinator (2003-10)
- CPS/PES, Classroom Volunteer (1999-10)
- St. Mary's Catholic Church, Catechism Teacher (2001-12)
- St. Mary's Philomath Station Coordinator (2006-12)
- Philomath School District Volunteer of the Year (2005-06)
- Philomath Chamber of Commerce Samaritan Award (2007 & 2012)

Previous School Board Accomplishments:

- Led the establishment of the district's vision to "Graduate every student and transition each into a job, training, or college," and developed a five-year plan to achieve it.
- Co-led the 2010 campaign for the \$29.5M school bond to rebuild Philomath High School.
- Led the campaign to pass the first operating levy to preserve school programs (music, sports, forestry, etc.) during challenging budget cycles.
- Delivered the bond construction projects on time, within budget, and to the promised scope.
- Addressed poor-performing staff across the school district.
- Led renegotiations with staff to reduce supplemental retirement costs to the district by 50%.

Goals:

- Put in place the resources to achieve the 100% graduation rate.
- Preserve staffing and programs through budget challenges.
- Create a 30-year facility investment plan.

(This information furnished by Tom Klipfel)



**Philomath
School
District 17J**

Director
Position 3

**Todd
Smith**

Occupation: Paid
Occupational Background: Currently Hazelnut Producer, I have over 30 years in different sectors of Agriculture and 6 years in management in unities.
Educational Background: Degree from LBCC in Agriculture Business, specialized courses from PSU
Prior Governmental Experience: Oregon Hazelnut Commission

Who am I?

I believe I am a person that is honest, person of my word, listener, someone that can find solutions outside of the box, someone that can and willing to listen to others and understand where they are coming from. I expect the best out of myself and others.

Why the Philomath School board:

As a Parent, Community Member and Business Manager, I see the importance of having all parts of the community represented on the school board giving our youth the best opportunity to fulfill their dreams.

I will bring an open mind with a different background to share.

No one person has the best solution, it takes a team with different backgrounds.

My kids attend elementary school, middle school and now high school in Philomath. Through this process my wife and I have gotten to know some great teachers and staff. My family has hosted 2 exchange students that could not believe how well the teachers and students cared for each other.

My goal as a school board member is to continue to encourage, parents, teachers and staff to encourage the students to reach for things the student believes impossible. I will work with school administration and parents to get students the basic technology skills, even if they do not plan to go into technology sectors or to college. Technology is in every industry from natural resources, to restaurants, to delivering packages, to sports just to name a few. If our students have a solid base to start their life adventure, they will be successful.

These are just a few reasons why I would like to be your next school board member.

Thank you

(This information furnished by Todd Smith)



**Philomath
School
District 17J**
Director
Position 3

**Erin
McMullen**

Occupation: Farmer; Business owner
Occupational Background: Farmer/Owner at Rain Drop Farms, 1999-present
Educational Background: Oregon State University, BS 2004
Prior Governmental Experience: Muddy Creek Charter School Board member; secretary; vice chair 2017-2023, Philomath Middle School Site Council

As a parent in the Philomath School District, I've been continually impressed by the dedication of our teachers, staff, and community. Their hard work shapes the future of our children. I am running for the school board to contribute to that future and help ensure public education remains a cornerstone of our thriving community.

What I bring to the table:

- **Experience:** Served on multiple boards in executive positions, including a school board, an international trade organization, and a regional growers association.
- **Collaboration:** Skilled in bringing people together to find solutions that benefit the community.
- **School Governance:** Experience in budgeting, financial matters, and state curriculum requirements.
- **Leadership:** As a business owner and farmer, I am used to strategic thinking, resource management, and making decisions that build a foundation for a solid future

My priorities:

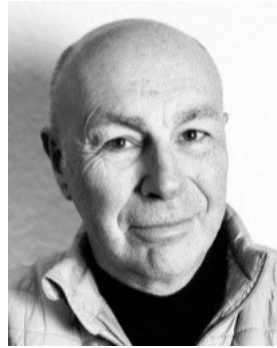
- Support every child's ongoing growth by ensuring they are seen, supported, and equipped to succeed.
- Advocate for policies that provide the resources all students need to thrive.
- Work collaboratively with educators, parents, and the community to move our district forward.

For the 23 years my family has lived in Philomath, we've seen our community's deep commitment to supporting children. I'm passionate about ensuring our students are prepared for success in life, and I'm committed to helping every child excel.

Endorsed by:

Bryan Traylor, Philomath Elem. School Principal 2020-2023
 Sally Brewer, Gathering Together Farm
 Gabe Shepherd, Benton County Commissioner
 Joy M. Henkle, The Nut Farm
 Joseph B. Dealy

(This information furnished by Erin McMullen)



**Corvallis Rural
Fire Protection
District**
Director
Position 1

**Tony
O'Donahue**

Occupation: Retired
Occupational Background: Business Consultant; Volunteer Firefighter
Educational Background: UCE (UK) - MBA
Prior Governmental Experience: Four Year Term as Director CRFPD

I am seeking re-election as a Board member (Director) for the Corvallis Rural Fire Protection District. Over the past term, I've had the privilege of serving predominantly as Treasurer, where I gained invaluable experience working closely with the district's financials and operations. My previous professional background in both business and firefighting allows me to bring a unique, balanced perspective to the board.

I am deeply committed to the mission of the CRFPD — to provide essential fire prevention and suppression services that protect life, property, and the environment in our district. As we face the challenges ahead, I am dedicated to ensuring the CRFPD remains responsive, efficient, and effective in its critical role within our community. While I value my own perspectives, my primary focus is on making decisions that best serve the district and its residents.

I humbly ask for your vote, so I can continue to serve and support the Corvallis Rural Fire Protection District in the years to come.

(This information furnished by Tony O'Donahue)

No Photo
Submitted

**Corvallis Rural
Fire Protection
District**

Director
Position 2

**Christy
Johnson**

Occupation: Fire and fuels management specialist

Occupational Background: Forest ecology

Educational Background: Arizona State University, BS;
Michigan State University, MS; Oregon State University, PhD

Prior Governmental Experience: None

I first moved to Corvallis in 2016 to study sustainable forest management at Oregon State University, where I earned my PhD studying ponderosa pine responses to fire. After school I spent a few years in eastern Oregon, married my wonderful husband, and eventually moved back to the community I love in Corvallis. I am a federal employee and work to help forest managers to implement prescribed fire, understand fire risk and strategies for community protection, and restore areas impacted by severe fire. I am qualified as a wildland firefighter and enjoy serving as a resource advisor and assisting with burned area emergency response teams. I hope to join the Corvallis Rural Fire Protection District board to serve my community and ensure that it is fire-safe.

(This information furnished by Christy Johnson)



**Philomath
Fire and Rescue
District**

Director
Position 2

**Kenneth
Corbin**

Occupation: Self Employed Software Engineer

Occupational Background: Software engineer for Hewlett Packard

Educational Background: BS in Electrical Engineering from Carnegie Mellon University

Prior Governmental Experience: Philomath Fire and Rescue board position 2

I have served as a volunteer firefighter/medic with Philomath Fire and Rescue from 1985 to 2021 and as a fire board member since 2021. During that time the department has gone through 6 different chiefs and has changed from relying on volunteers to respond to all calls to having paid staff and resident volunteers available for all first line responses.

I would like to continue serving in my current position on the board. I have significant experience as both a volunteer and a board member that will be of great value in making sound decisions that affect our staff – paid and volunteer -- and our outreach to the community. My input on the Board will continue to enhance the Board's understanding of the day-to-day operations of a fire department, especially from the perspective of a long term volunteer.

(This information furnished by Ken Corbin)

City of Albany Measure 22-209

Ballot Title

Caption: Renewal of the Ambulance, Fire, and Police Local Option Tax

Question: Shall Albany continue \$1.15 per \$1,000.00 of assessed value for ambulance, fire, police operations for five more years beginning 2026-2027? This measure renews current local option taxes.

Summary: The City will use tax revenue from this measure to continue funding for firefighter/ emergency medical technicians, deputy fire marshal and emergency services positions, for police officers, police clerks, community service officers, and telecommunications and crime analyst positions, together with related equipment and training. Taxes will also continue to be used to pay operating costs for the fire and police departments. The levy continues the rate previously approved by voters in 2020.

The proposed rate will raise approximately \$6,121,900.00 in 2026-2027; \$6,305,600.00 in 2027-2028; \$6,494,700.00 in 2028-2029; \$6,689,600.00 in 2029-2030; and \$6,890,300.00 in 2030-2031, for a total of \$32,502,100.00

The estimated tax cost for this measure is an ESTIMATE ONLY based on the best information available from the county assessor at the time of estimate and may reflect the impact of early payment discounts, compression and the collection rate.

Explanatory Statement

The City will use tax revenue from this measure to continue funding for firefighter/ emergency medical technicians, deputy fire marshal and emergency services positions, for police officers, police clerks, community service officers, and telecommunications and crime analyst positions, together with related equipment and training. Taxes will also continue to be used to pay operating costs for the fire and police departments. The levy continues the rate previously approved by voters in 2020.

The proposed rate will raise approximately \$6,121,900.00 in 2026-2027; \$6,305,600.00 in 2027-2028; \$6,494,700.00 in 2028-2029; \$6,689,600.00 in 2029-2030; and \$6,890,300.00 in 2030-2031, for a total of \$32,502,100.00

The estimated tax cost for this measure is an ESTIMATE ONLY based on the best information available from the county assessor at the time of estimate and may reflect the impact of early payment discounts, compression and the collection rate.

(Submitted by Albany City Recorder)

City of Albany Measure 22-209 Argument in Favor

**Citizens for a Safer Albany
Vote Yes on 22-209 to RENEW
Albany's Ambulance, Fire, &
Police Levy**

This ballot question is for a continuing levy and will not cost you more money.

In 2002, the voters of Albany approved a levy to add critical fire and police positions to improve our level of public safety services. This levy has been renewed four times.

This levy is for the continuance of an existing tax. State law only allows levies for a maximum five years and they must be renewed by the voters each time to continue the levies.

The approval of this levy is vital to Albany's ambulance, fire and police services.
Without this levy, positions would be eliminated.

This levy is to retain Albany's current ambulance, fire and police services.

"Vote "Yes" to RENEW Albany's Ambulance, Fire and Police Levy. This is an existing tax that currently funds numerous police, fire and EMT positions. Eliminating these positions would seriously impact public safety in Albany. Join me and vote "Yes" to support our public safety!"

--Edward Boyd, retired Albany Police Chief and resident of North Albany.

"Continued reliance on our emergency services is critical to our individual and community needs. Emergency calls keep rising every year. Join me in continuing to support our Albany Police and Fire Departments."

--Shane Wooton, retired Albany Fire Chief and resident of North Albany.

Citizens for a Safer Albany was formed in 2002 by volunteers to campaign for your community's safety.

This measure is to continue this level of service.

* Taxes could increase for new construction/new developments that have not yet been fully assessed or are not in tax compression.

(This information furnished by
Citizens for a Safer Albany, PAC #24188)

**NO ARGUMENTS AGAINST
THIS MEASURE WERE FILED**

Oregon Voter Registration Form

- You may use this form to register to vote or update your information
1. Print with a black or blue pen to complete the form.
 2. Sign the form.
 3. Mail or drop off the form at your County Elections Office.



You may also use online voter resources to register or update your registration status.

oregonvotes.gov

qualifications

- Are you a citizen of the United States of America? yes no
- Are you at least 16 years of age? yes no

! If you mark no in response to either of these questions, do not complete this form.

personal information *required information

last name* first* middle

Oregon residence address, city and zip code (include apt. or space number)*

date of birth (month/day/year)* county of residence

phone email

mailing address, including city, state and zip code (required if different than residence)

Oregon Driver License/ID number

Provide a valid **Oregon Driver License, Permit or ID:**

I do not have a valid **Oregon Driver License/Permit/ID.**
The last 4 digits of my Social Security Number (SSN) are:

x x x - x x -

I do not have a valid Oregon Driver License/Permit/ID or a SSN. I have attached a copy of **acceptable identification.**

political party

- Not a member of a party
- Constitution
- Democratic
- Independent
- Libertarian
- No Labels
- Pacific Green
- Progressive
- Republican
- Working Families
- Other _____

signature I swear or affirm that I am qualified to be an elector and I have told the truth on this registration.

sign here _____ date today _____

! If you sign this card and know it to be false, you can be fined up to \$125,000 and/or imprisoned for up to 5 years.

registration updates Complete this section if you are updating your information.

previous registration name previous county and state

home address on previous registration date of birth (month/day/year)

BENTON COUNTY OFFICIAL BALLOT DROP SITES

Benton County Elections & Passports Office

Kalapuya Building

4500 SW Research Way, 2nd Floor, Corvallis OR 97333

541-766-6756

Mon thru Fri 8:00 am to 5:00 pm

Election Day 7:00 am to 8:00 pm

24-HOUR OUTDOOR BALLOT DROP BOXES

Kalapuya Building

Rear of parking lot

4500 SW Research Way, Corvallis OR 97333

OSU Gill Coliseum

Ralph Miller Ln and 26th St

660 SW 26th St, Corvallis OR 97331

Lincoln Health Center

Southside of parking lot

121 SE Viewmont Ave, Corvallis OR 97333

Corvallis Public Library

6th St and Monroe Ave

645 NW Monroe Ave, Corvallis OR 97330

Benton County Courthouse

Front of main entrance

120 NW 4th St, Corvallis OR 97330

Law Enforcement Building

Near 5th St entrance

180 NW 5th St, Corvallis OR 97330

LBCC Benton Center

Near main entrance

757 NW Polk Ave, Corvallis OR 97330

Corvallis Community Center (C3)

Near main entrance

2601 NW Tyler Ave, Corvallis OR 97330

Wells Fargo Bank at Timberhill

Timberhill Shopping Center

2543 NW Kings Blvd, Corvallis OR 97330

City Limits Market

Near main entrance

5800 NW Hwy 99W, Corvallis OR 97330

Adair Village City Hall

Parking lot entrance

6030 NE William R Carr Ave

Adair Village OR 97330

North Albany Shopping Center

In front of IGA Supermarket

621 Hickory Ave NW, Albany OR 97321

Philomath Community Library

Near main entrance

1050 Applegate St, Philomath OR 97370

Monroe Community Library

In parking lot

380 N 5th St, Monroe OR 97456

Alsea Community Library

Parking lot sidewalk

19192 Alsea Hwy, Alsea OR 97324

Benton County Elections
4500 SW Research Way, 2nd Floor
Corvallis, OR 97333

NONPROFIT
CAR-RT SORT
U.S. Postage
PAID
Portland, OR
Permit No. 692



RESIDENTIAL CUSTOMER

OFFICIAL BENTON COUNTY
VOTERS' PAMPHLET
MAY 20, 2025 SPECIAL DISTRICT ELECTION

