



**Benton  
County**  
OREGON

# OFFICIAL VOTERS' PAMPHLET

**Primary Election  
May 19, 2026**

The publication and distribution of this pamphlet is coordinated by the County Clerk. The information within was provided by those who chose to participate.



**Benton County  
Elections Office  
Kalapuya Building  
4500 SW Research Way, 2<sup>nd</sup> Floor  
Corvallis, OR 97333**

Phone: 541-766-6756  
E-Mail: [elections@bentoncountyor.gov](mailto:elections@bentoncountyor.gov)  
Website: [re.bentoncountyor.gov](http://re.bentoncountyor.gov)



## Board of Commissioners

Office: (541) 766-6800

Fax: (541) 766-6893

4500 SW Research Way

PO Box 3020

Corvallis, OR 97339-3020

[boc.bentoncountyor.gov](http://boc.bentoncountyor.gov)

Dear Benton County Voter:

**Tuesday, May 19, 2026, is Primary Election Day in Oregon.** We encourage all residents to participate in the upcoming election. Your vote is an important part of our democratic process, and this Voters' Pamphlet is designed to provide helpful information as you make your decisions.

In this election, there are several measures on the ballot that may impact our county and local communities. We encourage you to review each measure carefully. The full text of ballot measures, explanatory statements, and arguments for and against each measure are included in this pamphlet or available on the Benton County website: <https://re.bentoncountyor.gov/elections/>.

In addition to ballot measures, there are candidates seeking election to various local offices. Candidates have the option to file statements for inclusion in this Voters' Pamphlet. These statements are provided as submitted by the candidates and have not been edited for content beyond formatting and legal compliance requirements. The inclusion of a candidate statement does not imply endorsement by the County or the Board of County Commissioners.

Please see the last page of this pamphlet for a list of Official Ballot Drop Sites in Benton County. If you need additional information or assistance, you may reach the Elections Office by phone: (541) 766-6756; email: [elections@bentoncountyor.gov](mailto:elections@bentoncountyor.gov); or in-person at the Kalapuya Building, 4500 SW Research Way, 2<sup>nd</sup> Floor, in Corvallis.

Sincerely,  
BENTON COUNTY BOARD OF COMMISSIONERS

A handwritten signature in black ink that reads "Pat Malone".

Pat Malone  
Chair

A handwritten signature in black ink that reads "Gabe Shepherd".

Gabe Shepherd  
Vice-Chair

A handwritten signature in black ink that reads "Nancy Wyse".

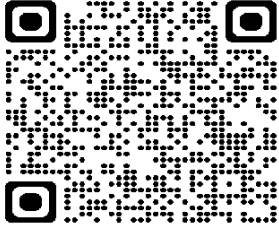
Nancy Wyse  
Commissioner

### TABLE OF CONTENTS

2	Letter from the Commissioners
3	Table of Contents
4	Translations النسخة المترجمة , 材料翻译, 한국어 번역물, Материалы на других языках, traducciones, คำแปลเนื้อหาเป็นภาษาไทย, Các bản dịch
5	Voting and Ballot Return Instructions
6	Information on Voters' Pamphlet Submission, Prepaid Postage, and In-Person Voting
7	Benton County Commissioner, Democrat, Position 1, Pat Malone and John Wilson
	<b>City of Corvallis Measures</b>
8	2-143 Amend Corvallis City Charter to Align with Model Charter
9	Argument in Favor 2-143
10	2-144 Remove Corvallis City Charter Provisions to Align with Model Charter
11	Argument in Favor 2-144
12	2-145 Amend Corvallis City Charter Provisions Relating to Exercise of Powers
13	Argument in Favor 2-145
14	2-146 Amend Corvallis Charter Relating to Vacancies, Quorum, Qualifications for Office
15	Argument in Favor 2-146
	<b>City of Philomath Measures</b>
16	2-147 Prohibits Psilocybin-Related Businesses and Psilocybin Product Manufacturing Within Philomath.
17	2-148 A Measure Proposing Annexation of an Island Territory, Pioneer Street
18	2-149 A Measure Proposing Annexation of an Island Territory, 7th Street
19	2-150 A Measure Proposing Annexation of an Island Right-of-Way, 7th
20	2-151 A Measure Proposing Annexation of an Island Territory, 9th Street
21	2-152 A Measure Proposing Annexation of an Island Territory, 17th Street
22	2-153 A Measure Proposing Annexation of an Island Territory, 19th Street
23	2-154 A Measure Proposing Annexation of an Island Territory, 19th Street
	<b>Philomath Fire and Rescue Measure</b>
24	2-155 Five-Year Local Operating Levy for Fire Rescue Personnel and Operation
	<b>Brownly-Marshall Road District Measure</b>
25	2-142 Five-Year Operating Projects Local Option Tax
	<b>Chinook Drive Road District Measure</b>
26	2-156 Renew a Five-Year Local Option Tax for Road Maintenance
28	Voter Registration Form
29	Absentee Application Form
30-31	Official Ballot Drop Sites in Benton County

## Attention

انتباه 注意事项 유의 사항 Внимание Atención ประกาศ Chú ý



Selected portions of this county voters' pamphlet are available in Arabic, Simplified Chinese, Korean, Russian, Spanish, Thai, and Vietnamese. These translations can be found online at [oregonvotes.gov/BentonVP](https://oregonvotes.gov/BentonVP)

تتوفر أجزاء مختارة من كتيب الناخبين في هذه المقاطعة باللغة العربية. يمكن العثور على هذه الترجمات عبر الإنترنت على [oregonvotes.gov/BentonVP](https://oregonvotes.gov/BentonVP)

本县选民手册的部分内容提供简体中文版本。可以访 [oregonvotes.gov/BentonVP](https://oregonvotes.gov/BentonVP) 获取该译本。

카운티 유권자 팸플릿 내 선택된 부분은 한국어로 준비되어 있습니다. 번역은 온라인 [oregonvotes.gov/BentonVP](https://oregonvotes.gov/BentonVP) 에서 찾아보실 수 있습니다.

Отдельные части брошюры избирателей этого округа доступны на русском языке. Эти переводы можно найти в Интернете по адресу [oregonvotes.gov/BentonVP](https://oregonvotes.gov/BentonVP)

Algunas secciones de este folleto para votantes del condado están disponibles en español. Estas traducciones están disponibles en línea en [oregonvotes.gov/BentonVP](https://oregonvotes.gov/BentonVP)

จุลสารผู้ลงคะแนนในเขตนี้บางส่วนจัดทำเป็นภาษาไทย ฉบับแปลเหล่านี้สามารถพบได้ทางออนไลน์ที่เว็บไซต์ [oregonvotes.gov/BentonVP](https://oregonvotes.gov/BentonVP)

Các phần được chọn trong tập thông tin cử tri quận này có bản ngôn ngữ tiếng Việt. Bản dịch có thể xem trực tuyến tại [oregonvotes.gov/BentonVP](https://oregonvotes.gov/BentonVP)

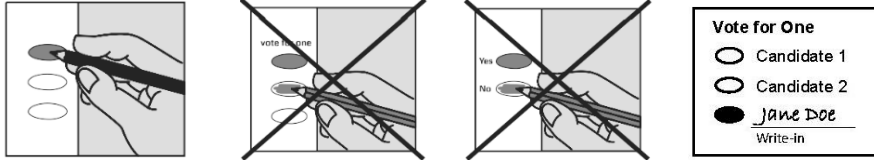
### Voting and Ballot Return Instructions

#### Your Ballot Packet Contains

- A printed ballot on which you may vote.
- A prepaid and pre-addressed signature return envelope in which to return your ballot.

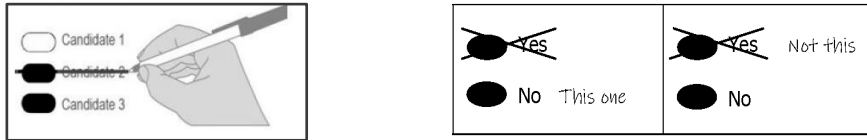
#### Voting Your Ballot

- Use a black or blue pen to fill in the ovals next to your choices.
- You do not have to vote on all contests.
- If you vote for more candidates than allowed or if you vote both Yes and No on a measure, it is called an overvote and your vote will not count for that candidate or measure.
- To write in a candidate who does not appear on your ballot, completely darken the oval to the left of the write-in line and write the full name of the candidate on that line.



#### Correcting Your Ballot

If you make an error on your ballot, you may correct it yourself. See examples below:

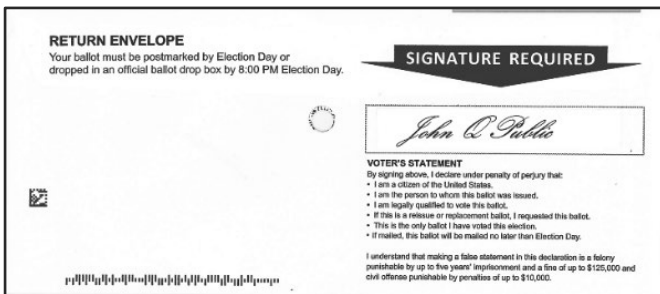


#### Contact Benton County Elections to request a replacement ballot if:

- You are unable to correct a mistake to make your intended choice clear.
- Your ballot is damaged or spoiled.
- You lose your ballot.

#### Returning Your Voted Ballot

- **SIGN** the voter's statement on the back of the signature return envelope. Your ballot will not be counted if your return envelope is not signed.
- Insert ballot into the signed return envelope.
- Seal the signed return envelope.
- **Mail no later than May 19, 2026.** Signed return envelope must be postmarked by Election Day and received no later than seven days after Election Day.
- Or place the signed return envelope in an **Oregon Official Ballot Drop Box** by **8:00 PM PDT May 19, 2026.**



## Important Information

Candidate statements and measure arguments included in this pamphlet are optional submissions. Candidate filings are posted at [re.bentoncountyor.gov](https://re.bentoncountyor.gov).

Information contained in statements or arguments submitted by candidates, political parties, assemblies of electors, individuals or organizations supporting or opposing a measure has not been verified for accuracy or completeness and does not constitute an endorsement by Benton County.



## Postage Paid

Voters do not need a stamp to mail a voted ballot back to the Elections Office. All ballots in Oregon are sent to voters with a postage paid ballot return envelope. The Post Office will charge the State of Oregon for each ballot mailed to an Elections Office.

## In-Person Voting and Official Ballot Drop Sites

Because Oregon is a vote-by-mail state, there are no polling places. Ballot drop boxes are disbursed throughout each county for voting convenience. For voters who prefer to vote in-person, voting booths are set up at every county Elections Office. Benton County's Elections Office is in the Kalapuya Building at 4500 SW Research Way, Corvallis, OR 97333.



**Benton County  
Commissioner**  
Position 1  
Democrat

**Pat  
Malone**

**Occupation:** County Commissioner  
**Occupational Background:** Forestry  
**Educational Background:** MFA, BA History, U. of Oregon  
**Prior Governmental Experience:** LBCC Budget, Soil and Water Conservation, Workforce Development, rural Fire Chief.

#### Experienced, Endorsed, Environmentalist

**Reducing Homelessness:** I worked on HB 4123, securing \$1,000,000 to coordinate HOPE housing. With these and other grants we have been able to increase our staff. This enables us to address the entire housing continuum.

**Focusing on Sustainability:** I'm working to reduce our carbon footprint by transitioning the County's fleet to hybrid and electric vehicles, installing charging stations, adding solar panels to County buildings, and keeping our 2040 environmental goals on track.

**Advancing Transportation Alternatives:** I'm guiding our transportation priorities on several committees. My input advanced the Corvallis-Albany bike path. Paths and transit help reduce income inequality, slow climate change, and improve community health.

**Solving the Solid Waste Problem:** I've dedicated four years to this work. Governor Kotek appointed me Chair of the "Task Force on Solid Waste," covering NW Oregon. We will develop a plan and propose legislation for 2027. Benton County will collaborate with neighboring counties to increase recycling, thus decreasing waste. I'm working hard to craft a long-term solution to the solid waste issue.

#### We're supporting Pat!

Dan Rayfield, Attorney General  
Secretary of State Tobias Read  
Peter DeFazio, Former Congressman  
Commissioner Nancy Wyse  
Ryan Joslin, Benton County District Attorney  
Diana Simpson, Former Sheriff  
Annabelle Jaramillo, Former County Commissioner  
Carolyn Mayers and Jan Napack: Corvallis City Councilors  
Christopher McMorran, Philomath Mayor  
Sami Al-Abdrabbuh, Corvallis School Board Member  
Greg Hamann, Julie Manning, Jo Anne Trow,  
Curtis Wright, Janet Wolf-Eshe

"I'll keep listening, building partnerships, creating consensus, and solving problems. I'll use my pragmatism and business acumen to work for all of Benton County. I ask for your vote!"  
*Pat Malone*

**Re-Elect Pat Malone County Commissioner**  
[www.vote4patmalone.org](http://www.vote4patmalone.org)

(This information furnished by Friends of Pat Malone)



**Benton County  
Commissioner**  
Position 1  
Democrat

**John  
Wilson**

**Occupation:** Adair Village City Councilor  
**Occupational Background:** Social Worker (Family Services and Disaster Recovery)  
**Educational Background:** UMass Boston, BA; Springhill College, MLA  
**Prior Governmental Experience:** Adair Village City Councilor (current); Benton County Planning Commissioner, (2023-present); City Councilor Battle Ground, IN (2005-2007)

Benton County needs to elect new, energetic leadership.

As a Benton County Planning Commissioner **JOHN VOTED AGAINST EXPANSION OF COFFIN BUTTE LANDFILL.** Benton County needs Commissioners like John who will fight for us not for corporations. John will hold regular town halls across Benton County to make sure you have a voice in how your county is run.

**Social Services.** John spent 26 years as a social worker. He will bring that experience to the county by working with state and local service providers, expanding emergency shelter capacity, and supporting the county's Coordinated Homeless Response Office.

**Housing.** The cost of housing is too high in Benton County. As a City Councilor, John supported increasing housing supply. As your Commissioner, he will support affordable housing developments in our cities and respond to rural residents' need for "mother-in-law" cottages.

**Environment:** Working in disaster recovery, John saw firsthand how climate change and environmental disasters ruin lives. He will prepare Benton County for wildfires and other climate-fueled natural disasters and revamp the county's climate action plan.

**Transportation.** John is a Corvallis Area Metropolitan Planning Organization board member (CAMPO), and avid cyclist. He supports safety improvements to Benton County's transportation system, and growing the County's EV charging network.

**Federal.** John will push back against federal overreach and defend county-run vote-by-mail, our immigrant neighbors, and the LGBTQIA+ community.

**Endorsements:**  
Benton County Commissioner Gabe Shepherd  
Corvallis Mayor Charles Maughan  
Corvallis City Councilors Alison Bowden, Briae Lewis  
Our Revolution - Corvallis Allies (ORCA)  
Progressive Democrats of America - Oregon (PDA)  
Oregon League of Conservation Voters (OLCV)

Benton County needs a fighter. We need John on the Board of Commissioners!

Learn more at [John-Wilson.org](http://John-Wilson.org)

(This information furnished by Friends of John Wilson)

## City of Corvallis Measure 2-143

### Ballot Title

**Caption:** Amend Corvallis City Charter to Align with Model Charter

**Question:** Shall the City of Corvallis amend its existing charter to align language with the League of Oregon Cities' model charter?

**Summary:** This measure would amend the City's existing home rule charter. The Oregon Constitution gives city voters the right to adopt and amend charters. Charters grant legal authority to cities, describe a city's form of government, and assign duties to city officials. Corvallis voters last amended the current charter in 2021.

If approved, this measure would align the language in several sections of the Corvallis city charter with the statewide model charter published by the League of Oregon Cities. Specifically, it would amend Sections 3, 7, 13, 15, 17, 23(f), 24, 26, 29, 41, 43, and 45 of the charter. No other provisions of the Charter would be changed by this measure.

This measure was referred to the voters by the City Council based on the recommendation of the City's Charter Review Task Force.

### Explanatory Statement

If approved, this measure would amend the City's current charter.

The proposed charter amendments are based on the unanimous recommendation of the City's Charter Review Task Force. The Task Force included the following individuals:

Charles Maughan (Mayor)  
Tony Cadena (City Councilor)  
Charlyn Ellis (City Councilor)  
Jim Moorefield (City Councilor)  
Hyatt Lytle (Community-at-Large)  
Jack Sattler (Community-at-Large)  
Curtis Wright (Community-at-Large)

The City Council unanimously approved submitting this measure to the voters.

The Oregon Constitution gives city voters the right to adopt and amend home rule charters. A charter grants legal authority to a city government, describes the city's form of government, and defines the roles and responsibilities of city officials.

This measure would align the language in several sections of the Corvallis city charter with the statewide model charter published by the League of Oregon Cities. The charter sections included within this measure were recommended by the Charter Review Task Force because they use different language from the model charter but are generally aligned with it in substance. As such, this measure is not intended to significantly change the effect of the charter sections in question.

Specifically, this measure would amend the following sections of the charter:

- Section 3, relating to the powers of the City generally;
- Section 7, relating to where the powers of the city are vested;
- Section 13, relating to compensation of city officers and employees;
- Section 15, relating to City Council meetings and rules;
- Section 17, relating to the record of City Council meetings;
- Section 23(f), relating to interference in administration;
- Section 24, relating to the Municipal Judge;
- Section 26, relating to applicability of state law;
- Section 29, relating to nominations for the Mayor and City Council positions;
- Section 41, relating to special assessments;
- Section 43, relating to continuation of existing ordinances; and
- Section 45, relating to repeal of prior charter provisions.

No other provisions of the Charter would be changed by this measure.

The full text of the proposed amendments and task force report are available at <https://www.corvallisoregon.gov/cm/page/may-2026-election-ballot-measures>.

(Submitted by City of Corvallis)

**NO ARGUMENTS AGAINST  
THIS MEASURE WERE FILED**

## City of Corvallis

### Measure 2-143

### Argument in Favor

#### **Vote YES on Measure 2-143 — Clearer Language. Same Local Control.**

Measure 2-143 updates outdated and inconsistent language in our City Charter to match the League of Oregon Cities' Model Charter, a statewide standard used by many cities across Oregon.

This measure **does not** change our form of government, reduce voter authority, or expand City Council power. The update focuses on clarity and consistency, making the charter easier to understand, administer, and legally defend.

This matters because unclear or outdated charter language can cause ambiguity, confusion, delay decisions, and lead to costly legal conflicts. Measure 2-143 helps prevent those problems before they happen.

The changes were carefully reviewed and unanimously recommended by a Charter Review Task Force of elected officials and community members, then unanimously referred to the voters by the City Council.

Your YES vote:

- Keeps our charter clear and up to date
- Aligns Corvallis with proven statewide standards
- Reduces legal risk and ambiguity
- Makes no changes to policy or government powers

Measure 2-143 is responsible, routine, and necessary maintenance of our city's core governing document.

#### **Please Join Us In Supporting Good Governance For A Better Corvallis**

Benton County Democrats  
 Benton County Republican Party  
 Pacific Green Party, Linn/Benton Chapter  
 Corvallis Chamber of Commerce  
 Downtown Corvallis Organization  
 Pat Malone, County Commissioner  
 Benton County Commissioner Gabe Shepherd  
 Benton County Commissioner Nancy Wyse  
 Charles Maughan, Mayor  
 Julie Manning, former Corvallis Mayor  
 Former Mayor Biff Traber  
 Penny York, former Corvallis City Councilor  
 Tony Cadena, City Councilor  
 Charlyn Ellis, City Councilor  
 Briae Lewis, City Councilor  
 Carolyn Mayers, City Councilor  
 Jim Moorefield, City Councilor  
 Jan Napack, City Councilor  
 Ava Olson, City Councilor  
 Brennan Colberg, Alexis Hammer  
 Steven Richmond, Curtis Wright

Learn more and get involved:  
[goodgovernancecorvallis.org](http://goodgovernancecorvallis.org)

(This information furnished by Good Governance Corvallis  
 ID:24834)

## City of Corvallis Measure 2-144

### Ballot Title

**Caption:** Remove Corvallis City Charter Provisions to Align with Model Charter

**Question:** Shall the City of Corvallis remove provisions from its charter to align with the League of Oregon Cities' model charter?

**Summary:** This measure would amend the City's existing home rule charter. The Oregon Constitution gives city voters the right to adopt and amend charters. Charters grant legal authority to cities, describe a city's form of government, and assign duties to city officials. Corvallis voters last amended the current charter in 2021.

If approved, this measure would remove certain provisions of the Corvallis city charter which are not included in the statewide model charter published by the League of Oregon Cities. Specifically, it would remove Sections 18, 25, 27, 28, 30, 31, 32, 42, and 48 of the charter. No other provisions of the Charter would be changed by this measure.

This measure was referred to the voters by the City Council based on the recommendation of the City's Charter Review Task Force.

### Explanatory Statement

If approved, this measure would amend the City's current charter.

The proposed charter amendments are based on the unanimous recommendation of the City's Charter Review Task Force. The Task Force included the following individuals:

Charles Maughan (Mayor)  
Tony Cadena (City Councilor)  
Charlyn Ellis (City Councilor)  
Jim Moorefield (City Councilor)  
Hyatt Lytle (Community-at-Large)  
Jack Sattler (Community-at-Large)  
Curtis Wright (Community-at-Large)

The City Council unanimously approved submitting this measure to the voters.

The Oregon Constitution gives city voters the right to adopt and amend home rule charters. A charter grants legal authority to a city government, describes the city's form of government, and defines the roles and responsibilities of city officials.

This measure would remove certain provisions of the Corvallis city charter which are not included in the statewide model charter published by the League of Oregon Cities. The charter sections which would be removed by this measure were recommended by the Charter Review Task Force for that reason and because their subject matter is already addressed in state law and other sections of the charter, or is or can be addressed in City ordinances.

Specifically, this measure would remove the following sections of the charter:

- Section 18, relating to public meetings;
- Section 25, relating to general elections;
- Section 27, relating to qualifications of electors;
- Section 28, relating to special elections;
- Section 30, relating to notice of elections;
- Section 31, relating to canvassing of election results;
- Section 32, relating to initiative and referendum;
- Section 42, relating to public improvement contracts; and
- Section 48, relating to amendments to the charter.

No other provisions of the Charter would be changed by this measure.

The full text of the proposed amendments and task force report are available at <https://www.corvallisoregon.gov/cm/page/may-2026-election-ballot-measures>.

(Submitted by City of Corvallis)

**NO ARGUMENTS AGAINST  
THIS MEASURE WERE FILED**

## City of Corvallis

### Measure 2-144

### Argument in Favor

#### Vote YES on Measure 2-144— Remove Redundancy, Not Rights

Measure 2-144 removes outdated and redundant language from our City Charter without eliminating any voter rights or protections.

The sections proposed for removal already exist in state law, or appear elsewhere in the Charter, or are better managed through city ordinances that can be updated more easily as laws change. Retaining duplicate or outdated text in our Charter creates confusion, increases legal risks, and makes our city government less efficient.

This measure was unanimously recommended by the Charter Review Task Force and unanimously referred to the voters by the City Council.

Public rights and safeguards remain fully protected:

- Public meetings remain required under state law
- Elections, initiative, and referendum rights remain unchanged
- Any Charter amendment still requires voter approval
- Transparency and accountability remain intact

Measure 2-144 **does not** reduce voter power. Instead, it streamlines the charter, focusing on what charters are meant to do: define the structure of government, not duplicate statutes that already apply. A cleaner charter is easier to understand, easier to administer, and less vulnerable to legal conflicts.

Your YES vote:

- Simplifies and modernizes the Charter
- Removes unnecessary duplication
- Preserves all legal rights and protections
- Reflects best practices used across Oregon

This is practical, responsible governance—not deregulation.

#### **Please Join Us In Supporting Good Governance For A Better Corvallis**

Benton County Democrats  
 Benton County Republican Party  
 Pacific Green Party, Linn/Benton Chapter  
 Corvallis Chamber of Commerce  
 Downtown Corvallis Organization  
 Pat Malone, County Commissioner  
 Benton County Commissioner Gabe Shepherd  
 Benton County Commissioner Nancy Wyse  
 Charles Maughan, Mayor; Julie Manning, former Corvallis Mayor  
 Former Mayor Biff Traber  
 Penny York, former Corvallis City Councilor  
 Tony Cadena, City Councilor  
 Charlyn Ellis, City Councilor; Briae Lewis, City Councilor  
 Carolyn Mayers, City Councilor; Jim Moorefield, City Councilor  
 Jan Napack, City Councilor; Ava Olson, City Councilor  
 Brennan Colberg; Alexis Hammer  
 Steven Richmond; Curtis Wright

Learn more and get involved:  
[goodgovernancecorvallis.org](http://goodgovernancecorvallis.org)

(This information furnished by Good Governance Corvallis  
 ID:24834)

## City of Corvallis Measure 2-145

### Ballot Title

**Caption:** Amend Corvallis City Charter Provisions Relating to Exercise of Powers

**Question:** Shall the City of Corvallis amend certain sections of its charter relating to the exercise of city powers?

**Summary:** This measure would amend the City's existing home rule charter. The Oregon Constitution gives city voters the right to adopt and amend charters. Charters grant legal authority to cities, describe a city's form of government, and assign duties to city officials. Corvallis voters last amended the current charter in 2021.

If approved, this measure would amend certain sections of the Corvallis city charter relating to the exercise of city powers, such as the adoption of resolutions, ordinances, and orders. Specifically, this measure would amend Sections 5, 6, 35, 36, and 37 of the charter. Many of the proposed changes would bring the charter language closer into alignment with the statewide model charter published by the League of Oregon Cities, but the amendments also include language specific to Corvallis. No other provisions of the Charter would be changed by this measure.

This measure was referred to the voters by the City Council based on the recommendation of the City's Charter Review Task Force.

### Explanatory Statement

If approved, this measure would amend the City's current charter.

The proposed charter amendments are based on the unanimous recommendation of the City's Charter Review Task Force. The Task Force included the following individuals:

Charles Maughan (Mayor)  
Tony Cadena (City Councilor)  
Charlyn Ellis (City Councilor)  
Jim Moorefield (City Councilor)  
Hyatt Lytle (Community-at-Large)  
Jack Sattler (Community-at-Large)  
Curtis Wright (Community-at-Large)

The City Council unanimously approved submitting this measure to voters for approval.

The Oregon Constitution gives city voters the right to adopt and amend home rule charters. A charter grants legal authority to a city government, describes the city's form of government, and defines the roles and responsibilities of city officials.

This measure would amend certain sections of the Corvallis city charter relating to the exercise of city powers, such as the adoption of resolutions, ordinances, and orders. Many of the proposed changes would bring the current charter language closer into alignment with the statewide model charter published by the League of Oregon Cities, but the amendments also include language specific to Corvallis.

Specifically, this measure would amend the following sections of the charter:

- Section 5, relating to how the language in the charter is to be construed;
- Section 6, relating to the manner in which the City exercises its powers; and
- Sections 35, 36, and 37, which currently relate to the adoption of ordinances, but which would be amended to describe adoption of not only ordinances, but also resolutions and orders.

No other provisions of the Charter would be changed by this measure.

The full text of the proposed amendments and task force report are available at <https://www.corvallisoregon.gov/cm/page/may-2026-election-ballot-measures>.

(Submitted by City of Corvallis)

**NO ARGUMENTS AGAINST  
THIS MEASURE WERE FILED**

## City of Corvallis

### Measure 2-145

### Argument in Favor

#### Vote YES on Measure 2-145 — Clear Rules for How City Decisions Are Made

Measure 2-145 updates our Charter to clearly explain how the City uses ordinances, resolutions, and orders—three different tools with distinct purposes.

Today, the Charter uses inconsistent and outdated language for these tools, which makes it harder for many residents to understand and follow the decision-making process. This measure clearly defines each action, aligns our charter with statewide best practices, and makes city decision-making easier for residents to engage with, understand, and follow.

This measure:

- Defines when ordinances, resolutions, or orders should be used
- Establishes consistent procedures for each type of action
- Improves transparency and public access to decisions
- Preserves voter initiative and referendum rights

Measure 2-145 was unanimously recommended by the Charter Review Task Force and unanimously referred to the voters by the City Council because it enhances accountability.

For residents, that means:

- Clearer agendas and records
- Better understanding of how decisions are made
- Reduced confusion and legal risk

For our city government, it means smoother operations and fewer procedural disputes—saving time and taxpayer money.

Measure 2-145 **does not** diminish voter rights. It **does not** increase Council authority. It simply clarifies the rules and makes them more consistent.

Your YES vote supports good governance and open, understandable decision-making.

#### **Please Join Us In Supporting Good Governance For A Better Corvallis**

Benton County Democrats  
 Benton County Republican Party  
 Pacific Green Party, Linn/Benton Chapter  
 Corvallis Chamber of Commerce  
 Downtown Corvallis Organization  
 Pat Malone, County Commissioner  
 Benton County Commissioner Gabe Shepherd  
 Benton County Commissioner Nancy Wyse  
 Charles Maughan, Mayor  
 Julie Manning, former Corvallis Mayor; Former Mayor Biff Traber  
 Penny York, former Corvallis City Councilor  
 Tony Cadena, City Councilor  
 Charlyn Ellis, City Councilor; Briae Lewis, City Councilor  
 Carolyn Mayers, City Councilor; Jim Moorefield, City Councilor  
 Jan Napack, City Councilor; Ava Olson, City Councilor  
 Brennan Colberg; Alexis Hammer  
 Steven Richmond; Curtis Wright

Learn more and get involved:  
[goodgovernancecorvallis.org](http://goodgovernancecorvallis.org)

(This information furnished by Good Governance Corvallis  
 ID:24834)

## City of Corvallis Measure 2-146

### Ballot Title

**Caption:** Amend Corvallis Charter Relating to Vacancies, Quorum, Qualifications for Office

**Question:** Shall the City of Corvallis amend its charter provisions relating to vacancies in office, quorum requirements, and qualifications for office?

**Summary:** This measure would amend the City's existing home rule charter. The Oregon Constitution gives city voters the right to adopt and amend charters. Charters grant legal authority to cities, describe a city's form of government, and assign duties to city officials. Corvallis voters last amended the current charter in 2021.

If approved, this measure would amend certain interrelated sections of the Corvallis city charter relating to vacancies in office, quorum requirements, and qualifications for office. Specifically, this measure would amend Sections 14, 16, 21, 33, and 34 of the charter. Many of the proposed changes would bring the charter language closer into alignment with the statewide model charter published by the League of Oregon Cities, but the amendments also include language specific to Corvallis. No other provisions of the Charter would be changed by this measure.

This measure was referred to the voters by the City Council based on the recommendation of the City's Charter Review Task Force.

### Explanatory Statement

If approved, this measure would amend the City's current charter.

The proposed charter amendments are based on the unanimous recommendation of the City's Charter Review Task Force. The Task Force included the following individuals:

Charles Maughan (Mayor)  
Tony Cadena (City Councilor)  
Charlyn Ellis (City Councilor)  
Jim Moorefield (City Councilor)  
Hyatt Lytle (Community-at-Large)  
Jack Sattler (Community-at-Large)  
Curtis Wright (Community-at-Large)

The City Council unanimously approved submitting this measure to the voters.

The Oregon Constitution gives city voters the right to adopt and amend home rule charters. A charter grants legal authority to a city government, describes the city's form of government, and defines the roles and responsibilities of city officials.

This measure would amend certain interrelated sections of the Corvallis city charter relating to vacancies in office, quorum requirements, and qualifications for office. Many of the proposed changes would bring the current charter language closer into alignment with the statewide model charter published by the League of Oregon Cities, but the amendments also include language specific to Corvallis.

Specifically, this measure would amend the following sections of the charter:

- Section 14, relating to qualifications for the offices of the Mayor and City Councilors;
- Section 16, relating to quorum requirements, including reduced quorum requirements when there are vacancies on the City Council solely in order to allow the City Council to act to fill a large number of vacancies if that were to occur;
- Section 21, relating to the vote required for the City Council to act, including a reduced number of votes required when there are vacancies on the City Council solely in order to allow the City Council to act to fill a large number of vacancies if that were to occur;
- Section 33, relating to the circumstances which cause a vacancy to occur in the offices of the Mayor or a City Councilor; and
- Section 34, relating to the requirements and process for filling a vacancy in the offices of the Mayor or a City Councilor.

No other provisions of the Charter would be changed by this measure.

The full text of the proposed amendments and task force report are available at <https://www.corvallisoregon.gov/cm/page/may-2026-election-ballot-measures>.

(Submitted by City of Corvallis)

**NO ARGUMENTS AGAINST  
THIS MEASURE WERE FILED**

## City of Corvallis

### Measure 2-146

### Argument in Favor

#### **Vote YES on Measure 2-146 — Ensure Stability, Accountability, and Continuity When It Matters Most**

Measure 2-146 updates the City Charter rules on vacancies, quorums, and councilor qualifications so our local government can continue to function smoothly, even in the event of unexpected vacancies or absences on the City Council.

Without clear rules, a string of resignations, emergencies, or even a disaster could leave our City Council unable to act, including being unable to fill empty seats. Measure 2-146 fixes that by setting fair, transparent, fully accountable, and timely procedures.

This measure clarifies:

- Qualifications for office
- What constitutes a vacancy
- How quorums and voting work when seats are vacant
- How vacancies are filled with public processes and clear timelines

These updates align our city with statewide standards while preserving local values, public input, and accountability.

Key protections that stay in place:

- Public hearings for appointments
- Ward-based nominations
- Special elections for mayor when required
- Conflict-of-interest safeguards

Your YES vote:

- Ensures our city government can continue to operate during transitions
- Maintains transparency and public involvement in filling vacancies
- Clarifies rules and expectations for elected officials
- Protects against government paralysis when seats are empty

Measure 2-146 is about preparedness, fairness, and stability—so our government continues to serve residents under any circumstance.

#### **Please Join Us In Supporting Good Governance For A Better Corvallis**

Benton County Democrats; Benton County Republican Party  
 Pacific Green Party, Linn/Benton Chapter  
 Corvallis Chamber of Commerce  
 Downtown Corvallis Organization  
 Pat Malone, County Commissioner  
 Benton County Commissioner Gabe Shepherd  
 Benton County Commissioner Nancy Wyse  
 Charles Maughan, Mayor  
 Julie Manning, former Corvallis Mayor; Former Mayor Biff Traber  
 Penny York, former Corvallis City Councilor  
 Tony Cadena, City Councilor  
 Charlyn Ellis, City Councilor; Briae Lewis, City Councilor  
 Carolyn Mayers, City Councilor; Jim Moorefield, City Councilor  
 Jan Napack, City Councilor; Ava Olson, City Councilor  
 Brennan Colberg; Alexis Hammer  
 Steven Richmond; Curtis Wright

Learn more and get involved:  
[goodgovernancecorvallis.org](http://goodgovernancecorvallis.org)

(This information furnished by Good Governance Corvallis  
 ID:24834)

## City of Philomath Measure 2-147

### Ballot Title

**Caption:** Prohibits Psilocybin-Related Businesses and Psilocybin Product Manufacturing within Philomath.

**Question:** Shall Philomath prohibit psilocybin-related businesses and psilocybin product manufacturing within Philomath city limits?

**Summary:** State law allows operation, manufacturing, distribution, and possession of psilocybin and psilocin. State law also allows a city to prohibit the operation, manufacturing, distribution, and possession of psilocybin and psilocin within city limits. Approval of this measure would prohibit the establishment of psilocybin project manufacturers and psilocybin service center operators within city limits. Denial of this measure would permit the establishment of psilocybin project manufacturers and psilocybin service center operators within city limits, subject to time, place, and manner regulations implemented by the City in Ordinance 887.

### Explanatory Statement

Approval of this measure would prohibit psilocybin product manufacturing and the establishment and operation of psilocybin-related businesses within the City.

A city council may adopt an ordinance prohibiting psilocybin product manufacturing and the establishment of psilocybin related businesses within the city, but the council must refer the ordinance to the voters at the next statewide general election. The Philomath City Council has adopted an ordinance prohibiting the establishment of psilocybin-related businesses within the City and, as a result, has referred this measure to the voters.

If approved, this measure would prohibit psilocybin-related businesses within the City.

If denied, psilocybin-related businesses would be allowed to operate within the City, and reasonable time, place, and manner regulations would immediately become operative as further provided in Ordinance 887. These regulations would, among other things: define key terms; require business registration with the City; set hours of operation; regulate public view, odors, lighting, outdoor storage; require distance away from residential neighborhoods, schools and facilities that predominantly serve children; and regulate signage.

(Submitted by City of Philomath)

NO ARGUMENTS FOR OR AGAINST  
THIS MEASURE WERE FILED

# City of Philomath Measure 2-148

## Ballot Title

**Caption:** A Measure Proposing Annexation of an Island Territory, Pioneer Street

**Question:** Shall the property located at 500 Pioneer Street, an unincorporated island territory, be annexed to the City?

**Summary:** A "Yes" vote would support the annexation of the property into the City of Philomath. Approval of this measure would annex approximately 2.75 acres of property located at 500 Pioneer Street to the City of Philomath. The territory is comprised of one county tax lot completely surrounded by the City. Upon annexation, the property would be zoned R1 - Low Density Residential. The property currently has one house. Additional development of the property is not planned at this time. Future development shall require review and approval by the City. The effective date of the annexation would be three years from the date the annexation is approved or the date that the property transfers ownership, whichever is earlier.

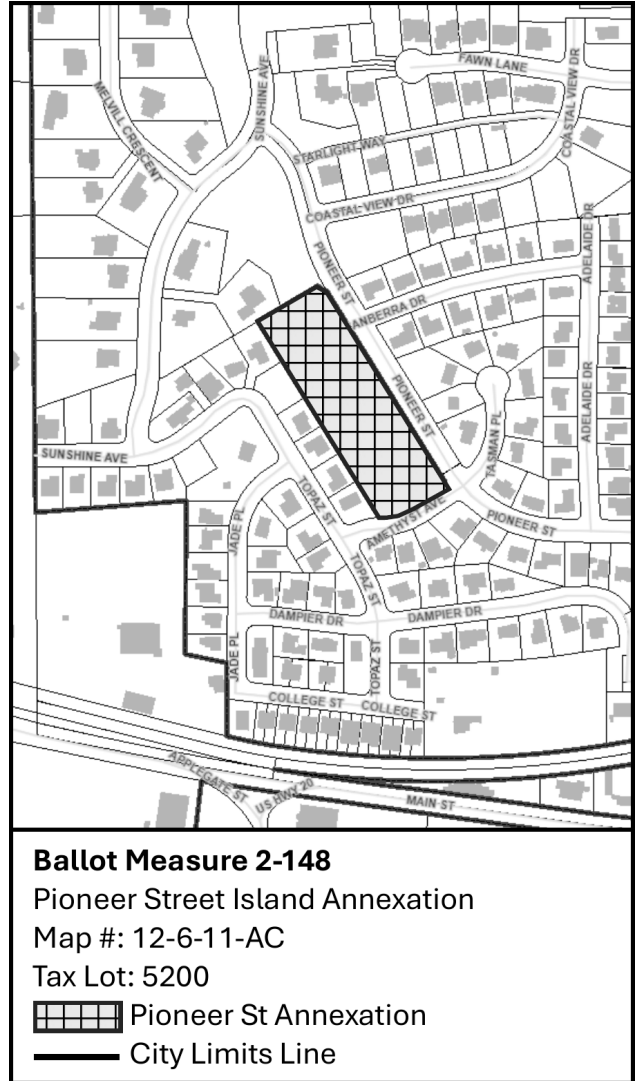
## Explanatory Statement

If approved by the voters, this measure would result in annexation of tax lot(s) that are currently outside city limits but completely surrounded by properties within city limits, referred to in the Municipal Code as unincorporated island territories. The Planning Commission and City Council have found the proposed annexation meets all applicable land use laws and island annexation criteria of the State of Oregon and the City of Philomath. The City Municipal Code relating to island annexations requires submitting this annexation to the voters for final approval.

The City is proposing to annex a total of nine tax lots and one piece of public right-of-way, making up a total of 7 separate island territories. There is no development planned for these lots at this time. Future development will have to go through the City's land use approval process. Because these properties are receiving city services, including public safety, use of the public library, parks, streets and sidewalks, the City believes they should be annexed into the City and start paying City property taxes that fund these services.

The properties are designated in the Philomath Comprehensive Plan as either Low or Medium Density Residential, or Industrial. Upon annexation into the City, The City's R-1 (Low Density Residential), R-2 (Medium Density Residential), or LI (Light Industrial) zoning will be applied. Properties zoned or used for residential uses will not have the annexation take effect until three years from the date approved by the voters and City Council, allowing property owners time to prepare for the new taxes to take effect.

Additional information and land use findings regarding the proposed annexation are contained in the staff report dated August 1, 2025. Copies of the staff report are available for public review on the city's website or at Philomath City Hall, 980 Applegate Street, Philomath, Oregon.



(Submitted by City of Philomath)

**NO ARGUMENTS FOR OR AGAINST  
THIS MEASURE WERE FILED**

### City of Philomath Measure 2-149

#### Ballot Title

**Caption:** A Measure Proposing Annexation of an Island Territory, 7th Street

**Question:** Shall the property located directly north of 392 N 7TH Street, an unincorporated island territory, be annexed to the City?

**Summary:** A "Yes" vote would support the annexation of the property into the City of Philomath. Approval of this measure would annex approximately 2.00 acres of property located directly north of 392 N 7TH Street to the City of Philomath. The territory is comprised of one county tax lot completely surrounded by the City. The tax lot does not have its own address. Upon annexation, the property would be zoned R1 - Low Density Residential. The property currently has one out building, no house. Additional development of the property is not planned at this time. Future development shall require review and approval by the City. The effective date of the annexation would be the date the annexation is approved.

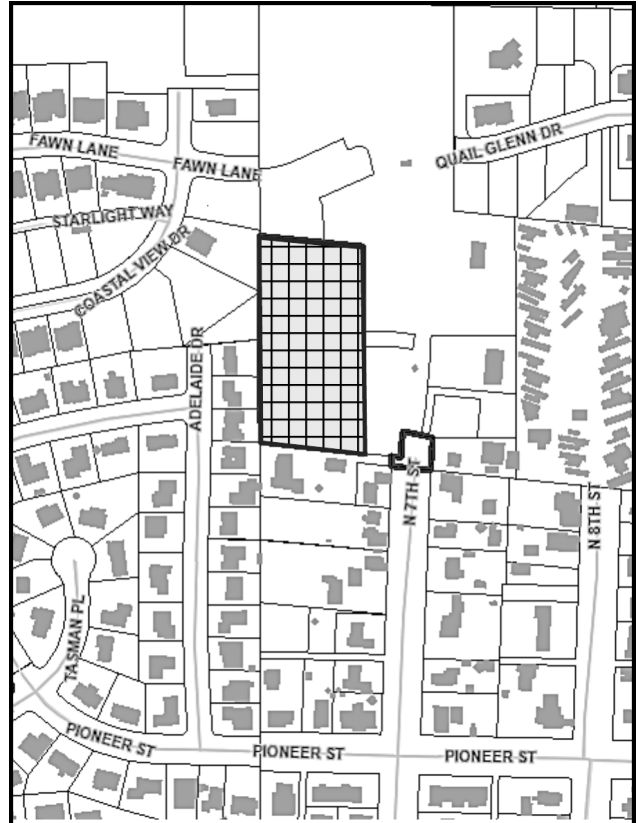
#### Explanatory Statement

If approved by the voters, this measure would result in annexation of tax lot(s) that are currently outside city limits but completely surrounded by properties within city limits, referred to in the Municipal Code as unincorporated island territories. The Planning Commission and City Council have found the proposed annexation meets all applicable land use laws and island annexation criteria of the State of Oregon and the City of Philomath. The City Municipal Code relating to island annexations requires submitting this annexation to the voters for final approval.

The City is proposing to annex a total of nine tax lots and one piece of public right-of-way, making up a total of 7 separate island territories. There is no development planned for these lots at this time. Future development will have to go through the City's land use approval process. Because these properties are receiving city services, including public safety, use of the public library, parks, streets and sidewalks, the City believes they should be annexed into the City and start paying City property taxes that fund these services.

The properties are designated in the Philomath Comprehensive Plan as either Low or Medium Density Residential, or Industrial. Upon annexation into the City, The City's R-1 (Low Density Residential), R-2 (Medium Density Residential), or LI (Light Industrial) zoning will be applied. Properties zoned or used for residential uses will not have the annexation take effect until three years from the date approved by the voters and City Council, allowing property owners time to prepare for the new taxes to take effect.

Additional information and land use findings regarding the proposed annexation are contained in the staff report dated August 1, 2025. Copies of the staff report are available for public review on the city's website or at Philomath City Hall, 980 Applegate Street, Philomath, Oregon.



#### Ballot Measure 2-149

7th Street Island Annexation

Map #: 12-6-11-A

Tax Lot: 400

7th St Annexation

City Limits Line

(Submitted by City of Philomath)

NO ARGUMENTS FOR OR AGAINST  
THIS MEASURE WERE FILED

### City of Philomath Measure 2-150

#### Ballot Title

**Caption:** A Measure Proposing Annexation of Island Right-of-Way, 7th

**Question:** Shall the public right-of-way located at north 7TH Street, an island territory, be annexed to the City?

**Summary:** A "Yes" vote would support the annexation of the property into the City of Philomath. Approval of this measure would annex approximately 0.10 acres of property located at the north terminus of N 7TH Street to the City of Philomath. The territory is comprised of one section of public right-of-way that is completely surrounded by the City. Upon annexation, the property would be received as public right-of-way. Additional development of the property is not planned at this time. The effective date of the annexation of this right-of-way would be the date the annexation is approved.

#### Explanatory Statement

If approved by the voters, this measure would result in annexation of tax lot(s) that are currently outside city limits but completely surrounded by properties within city limits, referred to in the Municipal Code as unincorporated island territories. The Planning Commission and City Council have found the proposed annexation meets all applicable land use laws and island annexation criteria of the State of Oregon and the City of Philomath. The City Municipal Code relating to island annexations requires submitting this annexation to the voters for final approval.

The City is proposing to annex a total of nine tax lots and one piece of public right-of-way, making up a total of 7 separate island territories. There is no development planned for these lots at this time. Future development will have to go through the City's land use approval process. Because these properties are receiving city services, including public safety, use of the public library, parks, streets and sidewalks, the City believes they should be annexed into the City and start paying City property taxes that fund these services.

The properties are designated in the Philomath Comprehensive Plan as either Low or Medium Density Residential, or Industrial. Upon annexation into the City, The City's R-1 (Low Density Residential), R-2 (Medium Density Residential), or LI (Light Industrial) zoning will be applied. Properties zoned or used for residential uses will not have the annexation take effect until three years from the date approved by the voters and City Council, allowing property owners time to prepare for the new taxes to take effect.

Additional information and land use findings regarding the proposed annexation are contained in the staff report dated August 1, 2025. Copies of the staff report are available for public review on the city's website or at Philomath City Hall, 980 Applegate Street, Philomath, Oregon.

**Ballot Measure 2-150**  
 Right-of-Way 7th Street Island Annexation  
 Map #: 12-6-11-A  
 Tax Lot: N/A (Public Right-of-Way)

Right-of-Way Annexation  
 City Limits Line

(Submitted by City of Philomath)  
  
NO ARGUMENTS FOR OR AGAINST  
THIS MEASURE WERE FILED

# City of Philomath Measure 2-151

## Ballot Title

**Caption:** A Measure Proposing Annexation of an Island Territory, 9th Street

**Question:** Shall the property located at 498 N 9TH Street, an unincorporated island territory, be annexed to the City?

**Summary:** A "Yes" vote would support the annexation of the property into the City of Philomath. Approval of this measure would annex approximately 1.30 acres of property located at 498 N 9TH Street to the City of Philomath. The territory is comprised of one county tax lot completely surrounded by the City. Upon annexation, the property would be zoned R1 - Low Density Residential. The property currently has one house. Additional development of the property is not planned at this time. Future development shall require review and approval by the City. The effective date of the annexation would be three years from the date the annexation is approved or the date that the property transfers ownership, whichever is earlier.

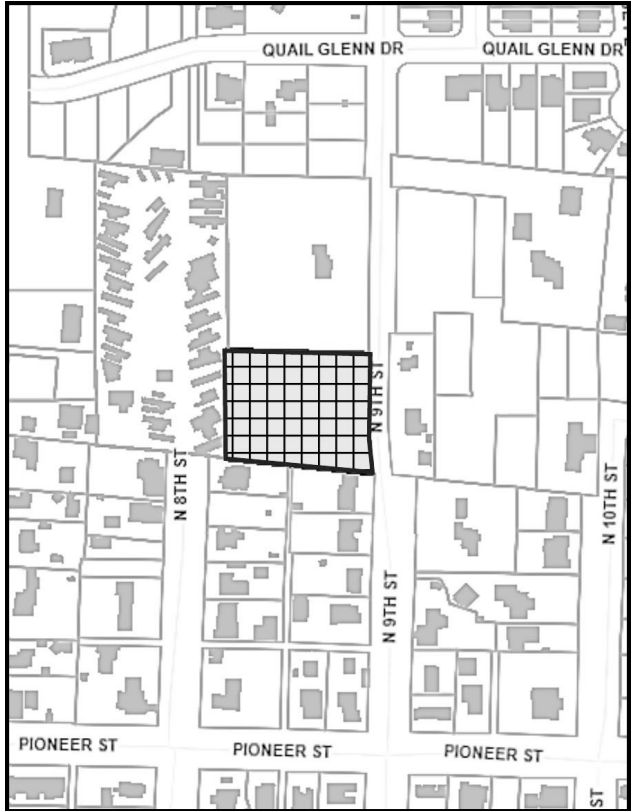
## Explanatory Statement

If approved by the voters, this measure would result in annexation of tax lot(s) that are currently outside city limits but completely surrounded by properties within city limits, referred to in the Municipal Code as unincorporated island territories. The Planning Commission and City Council have found the proposed annexation meets all applicable land use laws and island annexation criteria of the State of Oregon and the City of Philomath. The City Municipal Code relating to island annexations requires submitting this annexation to the voters for final approval.



The City is proposing to annex a total of nine tax lots and one piece of public right-of-way, making up a total of 7 separate island territories. There is no development planned for these lots at this time. Future development will have to go through the City's land use approval process. Because these properties are receiving city services, including public safety, use of the public library, parks, streets and sidewalks, the City believes they should be annexed into the City and start paying City property taxes that fund these services.

The properties are designated in the Philomath Comprehensive Plan as either Low or Medium Density Residential, or Industrial. Upon annexation into the City, The City's R-1 (Low Density Residential), R-2 (Medium Density Residential), or LI (Light Industrial) zoning will be applied. Properties zoned or used for residential uses will not have the annexation take effect until three years from the date approved by the voters and City Council, allowing property owners time to prepare for the new taxes to take effect.

Additional information and land use findings regarding the proposed annexation are contained in the staff report dated August 1, 2025. Copies of the staff report are available for public review on the city's website or at Philomath City Hall, 980 Applegate Street, Philomath, Oregon.



**Ballot Measure 2-151**  
 9th Street Island Annexation  
 Map #: 12-6-11-A  
 Tax Lot: 100

 9th St Annexation  
 City Limits Line

(Submitted by City of Philomath)

**NO ARGUMENTS FOR OR AGAINST  
THIS MEASURE WERE FILED**

# City of Philomath Measure 2-152

## Ballot Title

**Caption:** A Measure Proposing Annexation of an Island Territory, 17th Street

**Question:** Shall the properties located at 365 and 401 N 17TH Street, an unincorporated island territory, be annexed to the City?

**Summary:** A "Yes" vote would support the annexation of the properties into the City of Philomath. Approval of this measure would annex approximately 5.58 acres of property located at 365 N 17TH Street and 401 N 17TH Street to the City of Philomath. The territory is comprised of two county tax lots completely surrounded by the City. Upon annexation, the properties would be zoned Light Industrial. 401 N 17TH Street currently has a house and 3 out buildings, while 365 N 17TH Street currently has self-storage buildings on it. Additional development of the properties are not planned at this time. Future development shall require review and approval by the City. The effective date of the annexation for 365 N 17TH Street, the effective date of the annexation would be the date the annexation is approved; for 401 N 17TH Street, the effective date of the annexation would be three years from the date the annexation is approved or the date that the properties transfer ownership, whichever is earlier.

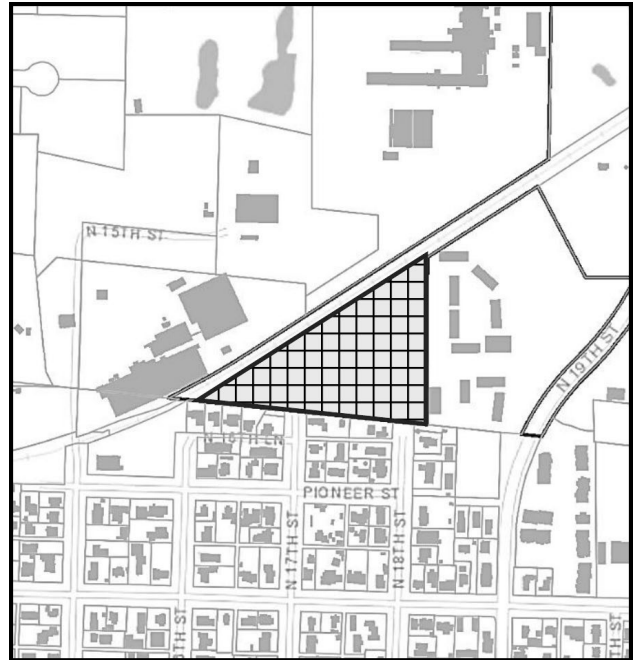
## Explanatory Statement

If approved by the voters, this measure would result in annexation of tax lot(s) that are currently outside city limits but completely surrounded by properties within city limits, referred to in the Municipal Code as unincorporated island territories. The Planning Commission and City Council have found the proposed annexation meets all applicable land use laws and island annexation criteria of the State of Oregon and the City of Philomath. The City Municipal Code relating to island annexations requires submitting this annexation to the voters for final approval.



The City is proposing to annex a total of nine tax lots and one piece of public right-of-way, making up a total of 7 separate island territories. There is no development planned for these lots at this time. Future development will have to go through the City's land use approval process. Because these properties are receiving city services, including public safety, use of the public library, parks, streets and sidewalks, the City believes they should be annexed into the City and start paying City property taxes that fund these services.

The properties are designated in the Philomath Comprehensive Plan as either Low or Medium Density Residential, or Industrial. Upon annexation into the City, The City's R-1 (Low Density Residential), R-2 (Medium Density Residential), or LI (Light Industrial) zoning will be applied. Properties zoned or used for residential uses will not have the annexation take effect until three years from the date approved by the voters and City Council, allowing property owners time to prepare for the new taxes to take effect.

Additional information and land use findings regarding the proposed annexation are contained in the staff report dated August 1, 2025. Copies of the staff report are available for public review on the city's website or at Philomath City Hall, 980 Applegate Street, Philomath, Oregon.



**Ballot Measure 2-152**  
 17th Street Island Annexation  
 Map #: 12-6-12-AC  
 Tax Lots: 1400 & 2000

 17th St Annexation  
 City Limits Line

(Submitted by City of Philomath)

**NO ARGUMENTS FOR OR AGAINST  
THIS MEASURE WERE FILED**

### City of Philomath Measure 2-153

#### Ballot Title

**Caption:** A Measure Proposing Annexation of an Island Territory, 19th Street

**Question:** Shall the properties located at 610 S 19TH Street, an unincorporated island territory, be annexed to the City?

**Summary:** A "Yes" vote would support the annexation of the properties into the City of Philomath. Approval of this measure would annex approximately 0.61 acres of property located at 610 S 19TH Street to the City of Philomath. The territory is comprised of two county tax lots completely surrounded by the City. Upon annexation, the properties would be zoned R2 - Medium Density Residential. The properties currently have three out buildings on them, no house. Additional development of the properties is not planned at this time. Future development shall require review and approval by the City. The effective date of the annexation would be the date the annexation is approved.

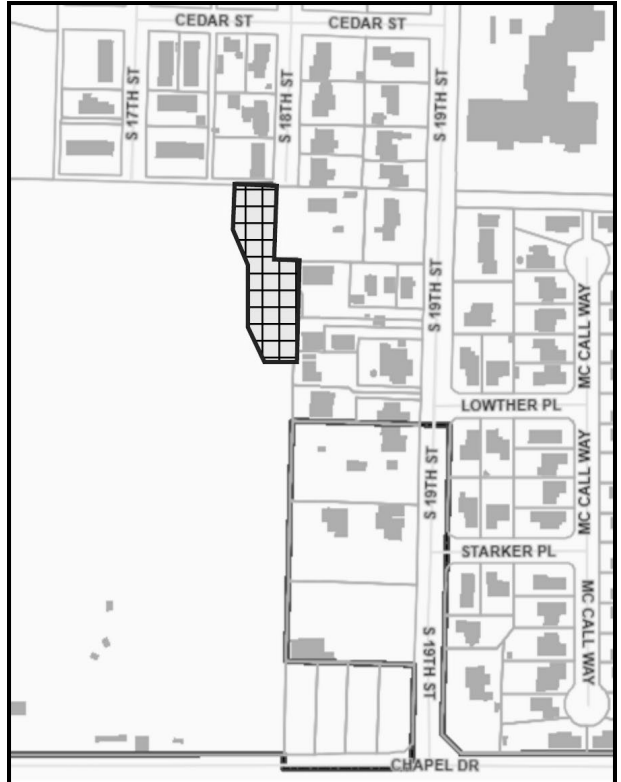
#### Explanatory Statement

If approved by the voters, this measure would result in annexation of tax lot(s) that are currently outside city limits but completely surrounded by properties within city limits, referred to in the Municipal Code as unincorporated island territories. The Planning Commission and City Council have found the proposed annexation meets all applicable land use laws and island annexation criteria of the State of Oregon and the City of Philomath. The City Municipal Code relating to island annexations requires submitting this annexation to the voters for final approval.

The City is proposing to annex a total of nine tax lots and one piece of public right-of-way, making up a total of 7 separate island territories. There is no development planned for these lots at this time. Future development will have to go through the City's land use approval process. Because these properties are receiving city services, including public safety, use of the public library, parks, streets and sidewalks, the City believes they should be annexed into the City and start paying City property taxes that fund these services.

The properties are designated in the Philomath Comprehensive Plan as either Low or Medium Density Residential, or Industrial. Upon annexation into the City, The City's R-1 (Low Density Residential), R-2 (Medium Density Residential), or LI (Light Industrial) zoning will be applied. Properties zoned or used for residential uses will not have the annexation take effect until three years from the date approved by the voters and City Council, allowing property owners time to prepare for the new taxes to take effect.

Additional information and land use findings regarding the proposed annexation are contained in the staff report dated August 1, 2025. Copies of the staff report are available for public review on the city's website or at Philomath City Hall, 980 Applegate Street, Philomath, Oregon.



#### Ballot Measure 2-153

19th Street Island Annexation

Map #: 12-6-12-DC

Tax Lots: 4301, 4900

 19th St Annexation

 City Limits Line

(Submitted by City of Philomath)

NO ARGUMENTS FOR OR AGAINST  
THIS MEASURE WERE FILED



## Philomath Fire and Rescue Measure 2-155

### Ballot Title

**Caption:** Five-Year Local Operating Levy for Fire Rescue Personnel and Operations

**Question:** Shall the district levy \$0.50 per \$1,000 of assessed value for five years to fund general operations beginning 2027-2028? This measure may cause property taxes to increase more than three percent.

**Summary:** The District is seeking a local operating levy to fund continuing operational expenses. The new proposed operating levy is \$.50 per \$1,000 and will start in July 2027 and expire in 2032. The bond expiring in June of 2027 for buildings and updating emergency response vehicles levied \$0.50 per \$1,000 of assessed value.

The District will use this revenue to maintain services and staffing as expenses have increases relating to personnel and operational costs, which enables Philomath Fire and Rescue to continue the current level of fire and rescue response to our community.

Philomath Fire and Rescue provides fire and life safety services within the territory of the Fire District, 24/7 via a combination of paid professional staff and trained volunteers. Without this funding, the District may have to reduce staffing levels and reduce the level of services to the community.

The proposed rate will raise approximately \$566,292 in 2027-2028, \$583,281 in 2028-2029, \$600,780 in 2029-2030, \$618,803 in 2030-2031, and \$637,367 in 2031-2032, for a total over five years of \$3,006,523.

### Explanatory Statement

Over the last five years, Philomath Fire and Rescue has experienced a 33% increase in emergency service requests, responding to over 1,100 emergency calls in 2025. Philomath Fire and Rescue is requesting continued financial support (Operating Levy) to maintain a predictable level of service to address these increased needs in our community. As part of this effort, Philomath Fire and Rescue has recently hired three additional full-time firefighters to respond to the new level of requests for emergency service. These new hires, as well as the operations costs associated with the increase in emergency calls, have resulted in amplified expenses for our operational funds. In fact, the percentage increase in call volume is double the percentage increase in permanent tax revenue. While Philomath Fire and Rescue has implemented cost savings within our current budget to accommodate these increases, the current level of funding is inadequate to support the level of response the community requires.

In 2016, voters passed a capital bond, which will be paid in full and completed in June of 2027. This capital bond was a loan for improving buildings and updating emergency response vehicles. Now, the District is seeking a local option tax operating levy to fund continuing operational expenses. The expiring bond levied \$0.50 per \$1,000 of assessed value. The new proposed operating levy remains at the same rate with no increases. This proposed operating levy will start in July 2027 and expire in 2032.

Currently, Philomath Fire and Rescue has reduced response times to 1.3 minutes from dispatch to response and maintains an average arrival time at the incident in under six minutes. We now staff advanced life support providers 24 hours a day, responding to medical and trauma emergencies. This levy will assist us in maintaining the response time and a predictable level of service.

Without this operating levy, Philomath Fire and Rescue must reduce paid staffing positions and other essential services, such as response to emergency medical and fire calls, wildland fire risk mitigation, building and plan reviews, and CPR First Aid trainings. This will lead to increased response times, lower levels of emergency medical care, and the reduced ability to mitigate emergencies effectively.

Like all the residents and business owners we serve, we are facing immense cost increases such as utility/water bills, fuel, insurance, and labor costs, and this, combined with 6% growth per year in emergency responses, has led us to ask for this proposed operating levy so that we can continue to support our community's safety.

Philomath Fire and Rescue's permanent tax rate was set over three decades ago, and we are unable to charge for emergency response or impose fees for service. Thus, this local option levy provides the only way we have of consistently funding operating costs. These levy funds will be spent on ongoing operational expenses. 100% of revenue raised by the local option levy stays under local control, overseen by the district's citizen budget committee and/or the elected Board of Directors.

(Submitted by Philomath Fire and Rescue)

**NO ARGUMENTS FOR OR AGAINST  
THIS MEASURE WERE FILED**

## Brownly-Marshall Road District Measure 2-142

### Ballot Title

**Caption:** Five-Year Operating Projects Local Option Tax.

**Question:** Shall the district impose \$0.40 per \$1000 of assessed value tax for operations for five years beginning 2026-2027? This measure may cause property taxes to increase more than three percent.

**Summary:** Passage of this local option tax for operating purposes will allow the Brownly-Marshall Road District to provide road maintenance and repair at approximately the same level of service as previous years. If the measure does not pass, then maintenance and repair services will likely be reduced, primarily by reducing or eliminating dust control.

The district currently has a permanent tax rate limit of \$0.9301 per \$1000 of assessed value and a local option tax of \$0.20 per \$1000 of assessed value which expires this fiscal year. This measure would impose a new local option levy \$0.40/\$1000 of assessed value from 2026-2027 through the 2030-2031 fiscal year.

At the maximum rate, the levy will raise approximately \$4,772 in 2026-2027, \$4,915 in 2027-2028, \$5,063 in 2028-2029, \$5,214 in 2029-2030, and \$5,371 in 2030-2031 (\$25,335 total). The estimated tax cost for this measure is an ESTIMATE ONLY based on the best information available from the county assessor at the time of the estimate and may reflect the impact of early payment discounts, compression and the collection rate.

### Explanatory Statement

Funds from this operating tax will be used for repair and maintenance of district roads with the intent of providing a similar level of service as has been provided in previous years. Without the operating levy, service levels will need to be reduced, primarily by reducing dust control.

If approved, the measure would authorize the district to tax properties at a maximum of \$0.40 per \$1,000 of assessed value annually for five years in addition to the \$0.9301 per \$1,000 permanent rate tax limit. However, the district need not levy the full amount in any given year. The district governing body will determine the amount to levy each year after taking into account anticipated revenue and costs via the annual budget process.

(Submitted by Brownly-Marshall Road District)

NO ARGUMENTS FOR OR AGAINST  
THIS MEASURE WERE FILED

## Chinook Drive Road District Measure 2-156

### Ballot Title

**Caption:** Renew a Five-Year Local Option Tax for Road Maintenance

**Question:** Shall the District levy \$0.85/\$1,000.00 assessed value for five years beginning 2026-2027 to continue funding its operations? This measure renews the current local option tax.

**Summary:** The tax revenue from this measure will allow the Chinook Drive Road District to continue to repair and maintain its roads at the present level, once the current local option expires in June. This levy continues the rate previously approved by voters in 2020.

The proposed local option rate will raise an estimated \$31,418.09 in 2026-2027, \$32,360.63 in 2027-2028, \$33,331.45 in 2028-2029, \$34,331.40 in 2029-2030, and \$35,361.34 in 2030-2031, for a total of \$166,802.91 over the five-year period.

The total tax for the District would continue at a permanent rate of \$0.9533 plus the local option of \$0.85 for a combined \$1.8033 per \$1,000 assessed value.

The estimated tax cost for this measure is an ESTIMATE ONLY based on the best information available from the county assessor at the time of estimate and may reflect the impact of early payment discounts, compression, and the collection rate.

### Explanatory Statement

The Chinook Road District is responsible for over five miles of roads. It oversees and manages gravel, asphalt, and chip sealed surfaces, as well as drainage, culverts, and vegetation control as necessary. In addition to road maintenance requirements, there are several thousand dollars in fixed costs annually, associated with insurance and mandatory regulatory fees.

Over the last five years, the District has advanced the quality of the road surface on Chaparral, though more could be done; worked to widen, stabilize, and hard surface Skipanon; and further stabilized Chinook, with plans to continue to repair and re-surface it in the future, as the primary road for the district.

The entire operating budget for the District comes from the residents of the district alone. There is no state or county funding available. All work is required to be done by private contractors. Benton County does not provide these services.

The District is currently funded in two ways: a permanent tax, and a local option, with the option providing slightly less than half of the overall budget. These appear on property tax statements as CHINOOK DRIVE RD and CHINOOK DRIVE RD LO (followed by year of approval), respectively. A local option can extend for a period of no more than five years before it must be reviewed and voted on by residents of the district. Although operating costs for the District have steadily climbed, the local option rate has remained unchanged, and will not increase with this measure.

The permanent tax alone is not sufficient to sustain the roads to the existing degree. This measure enables the District to continue to maintain and improve its roads in line with current standards. This includes annual fall road work (gravel work, ditching), spring road work (repairs as needed from winter conditions), summer road work (chip seal and asphalt repair), and any emergency expenses, on top of set, annually recurring expenses.

(Submitted by Chinook Drive Road District)

NO ARGUMENTS FOR OR AGAINST  
THIS MEASURE WERE FILED

# Blank Page

Oregon Voter Registration Form

You may use this form to register to vote or update your information

1. Print with a black or blue pen to complete the form.
2. Sign the form.
3. Mail or drop off the form at your County Elections Office.



You may also use online voter resources to register or update your registration status.

**oregonvotes.gov**

**qualifications**

- Are you a citizen of the United States of America?  yes  no
- Are you at least 16 years of age?  yes  no

**!** If you mark no in response to either of these questions, do not complete this form.

**personal information** \*required information

last name\* first\* middle

---

Oregon residence address, city and zip code (include apt. or space number)\*

---

date of birth (month/day/year)\* county of residence

---

phone email

---

mailing address, including city, state and zip code (required if different than residence)

**Oregon Driver License/ID number**

Provide a valid **Oregon Driver License, Permit or ID:**

I do not have a valid **Oregon Driver License/Permit/ID.**  
The last 4 digits of my Social Security Number (SSN) are:

x x x - x x -

I do not have a valid Oregon Driver License/Permit/ID or a SSN. I have attached a copy of **acceptable identification.**

**political party**

- Not a member of a party
- Constitution
- Democratic
- Independent
- Libertarian
- No Labels
- Pacific Green
- Progressive
- Republican
- Working Families
- Other \_\_\_\_\_

**signature** I swear or affirm that I am qualified to be an elector and I have told the truth on this registration.

sign here \_\_\_\_\_ date today \_\_\_\_\_

**!** If you sign this card and know it to be false, you can be fined up to \$125,000 and/or imprisoned for up to 5 years.

**registration updates** Complete this section if you are updating your information.

previous registration name previous county and state

---

home address on previous registration date of birth (month/day/year)

Elections & Passports Division

Office: (541) 766-6756  
Fax: (541) 766-6757

4500 SW Research Way, 2nd Floor  
PO Box 888  
Corvallis, OR 97339



**Benton  
County**

RECORDS & ELECTIONS  
DEPARTMENT

**ABSENTEE APPLICATION**

re.bentoncountyor.gov  
elections@bentoncountyor.gov

This is not a voter registration form. You must be a registered voter to request an absentee ballot. If you are unsure of your status, you can contact our office or check online at [www.oregonvotes.gov](http://www.oregonvotes.gov). If you have a Drivers' License or ID with the Oregon Department of Motor Vehicles, you may apply electronically for an absentee ballot, update your voting information or register at [www.oregonvotes.gov](http://www.oregonvotes.gov).

Completed and signed absentee applications may be submitted by e-mail, fax, mail or deliver in person.

Please select **only one** category:

- Military
- Out of Country Permanently
- Student
- Snowbird
- Out of Country Temporarily
- Other: \_\_\_\_\_

Please select **only one** of the three options below:

<input type="checkbox"/>	1. All future elections until further notice.
<input type="checkbox"/>	2. All future elections until the following day: _____ (mm/dd/yyyy)
<input type="checkbox"/>	3. Every year, I will be away from _____ (month) _____ (day) till _____ (month) _____ (day) This will continue to happen until further notice

Name (Last, First, Middle)	Date of Birth (mm/dd/yyyy)
----------------------------	----------------------------

Absentee Address Line 1
Absentee Address Line 2 (if applicable)
Absentee Address Line 3 (if applicable)
COUNTRY (For United States address: City, State, Zip Code)

Benton County Residential Address
City, State, Zip Code

E-Mail	Telephone
--------	-----------

Signature	Date
-----------	------

## BENTON COUNTY OFFICIAL BALLOT DROP SITES

### Records and Elections Office

**Kalapuya Building**  
**4500 SW Research Way, 2nd Floor**  
**Corvallis, OR 97333**

Monday thru Friday 8:00 AM to 5:00 PM  
 Election Day 7:00 AM to 8:00 PM



### Oregon Drop Box Locator

This tool is provided by the Secretary of State to help voters locate official ballot drop boxes by address. This locator is available 20 days before an election. The link to this site is <https://sos.oregon.gov/voting/Pages/drop-box-locator.aspx>



#### Kalapuya Building

Rear of parking lot  
**4500 SW Research Way**  
**Corvallis, OR 97333**



#### OSU Gill Coliseum

Ralph Miller Ln & 26th St  
**660 SW 26th St**  
**Corvallis, OR 97331**



#### Lincoln Health Center

Southside of parking lot  
**121 SE Viewmont Ave**  
**Corvallis, OR 97333**



#### Benton County Courthouse

Front of main entrance  
**120 NW 4th St**  
**Corvallis, OR 97330**



#### Law Enforcement Building

Near 5th St entrance  
**180 NW 5th St**  
**Corvallis, OR 97330**



#### LBCC Benton Center

Near main entrance  
**757 NW Polk Ave**  
**Corvallis, OR 97330**

BENTON COUNTY OFFICIAL BALLOT DROP SITES



**Corvallis Community Center**

Near main entrance  
**2601 NW Tyler Ave  
 Corvallis, OR 97330**



**Wells Fargo Bank at Timberhill**

Timberhill Shopping Center  
**2543 NW Kings Blvd  
 Corvallis, OR 97330**



**City Limits Market**

Near main entrance  
**5800 NW Hwy 99W  
 Corvallis, OR 97330**



**Adair Village City Hall**

Parking lot entrance  
**6030 NE William R Carr Ave  
 Adair Village, OR 97330**



**North Albany Shopping Center**

In front of IGA supermarket  
**621 Hickory Ave NW  
 Albany, OR 97321**



**Philomath Community Library**

Near main entrance  
**1050 Applegate St  
 Philomath, OR 97370**



**Monroe Community Library**

In parking Lot  
**380 N 5th St  
 Monroe, OR 97456**



**Alsea Community Library**

Parking lot sidewalk  
**19192 Alsea Hwy  
 Alsea, OR 97324**

**THIS CONCLUDES  
THE BENTON COUNTY  
PORTION OF THE  
VOTERS' PAMPHLET**

OFFICIAL BENTON COUNTY  
VOTERS' PAMPHLET  
MAY 19, 2026 PRIMARY ELECTION

